

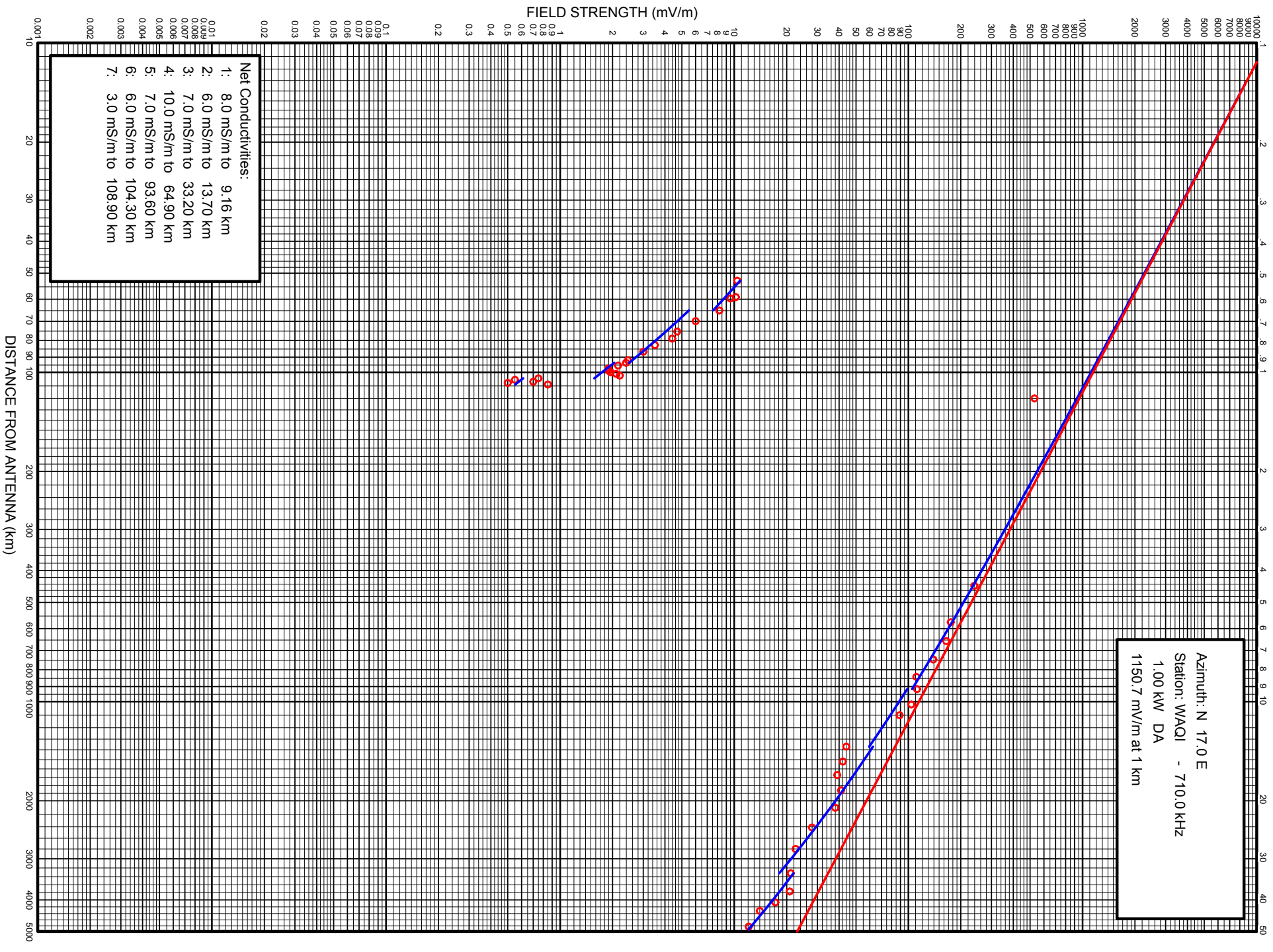
FIELD STRENGTH MEASUREMENT DATA

Azimuth: N 17.0 E

Call: WAQI
Frequency: 710.0 kHz
Power: 1.000 kW
Pattern: DA

Point Number	Date	Time	Distance (km)	Field Strength (mV/m)
1	062799	1216	1.20	530.00
2		1231	4.45	239.00
3		1237	5.74	175.00
4		1241	6.55	165.00
5		1245	7.45	139.00
6		1254	8.41	111.00
7		1258	9.16	112.00
8		1301	10.20	104.00
9		1305	11.00	89.00
10		1314	13.70	44.00
11		1318	15.20	42.00
12		1326	16.70	39.00
13		1339	18.60	41.00
14		1349	21.00	38.00
15		1344	24.10	27.90
16		1354	28.00	22.50
17		1404	33.20	21.10
18		1412	37.70	20.80
19		1422	40.70	17.20
20		1449	43.20	14.00
21		1519	48.20	12.10
22		1557	52.70	10.40
23		1608	59.10	10.20

24		1613	59.70	9.50
25		1621	64.90	8.20
26		1644	69.90	6.00
27		1749	75.20	4.70
28		1803	79.00	4.40
29		1818	82.70	3.50
30		1841	86.60	3.00
31		1857	91.90	2.45
32		1902	93.60	2.39
33		1909	95.40	2.15
34		1920	97.40	1.89
35		1930	98.90	1.90
36		1932	100.00	1.95
37		1936	101.10	2.10
38		1938	102.30	2.20
39		1942	104.30	0.750
40		1945	105.40	0.550
41		1949	106.80	0.700
42		1953	107.70	0.500
43	062799	1957	108.90	0.850



WEGG

ROSE HILL, NORTH CAROLINA

WAQI GROUND CONDUCTIVITY AND STANDARD PATTERN VALUES

Azimuth	Radiation (mV/m at one km)	Ground Conductivity Data:							
		Region conductivity in mS/m followed by distance in km to the end of region. E - map data; M - measurement data.							
10.0	1368.75	8.0E	132.2	5000.0E	884.7	4.0E	989.8	2.0E	1032.9
		4.0E	1087.3	2.0E	1552.0				
11.0	1336.92	8.0E	130.5	5000.0E	893.5	4.0E	1002.9	2.0E	1017.8
		4.0E	1081.5	2.0E	1410.4	4.0E	1444.3	2.0E	1552.1
12.0	1305.17	8.0E	126.2	5000.0E	902.8	4.0E	1076.4	2.0E	1385.8
		4.0E	1414.2	5000.0E	1419.7	4.0E	1507.6	2.0E	1552.0
13.0	1273.58	8.0E	122.1	5000.0E	905.8	4.0E	1071.6	2.0E	1371.3
		4.0E	1371.5	5000.0E	1376.3	4.0E	1396.5	5000.0E	1405.4
14.0	1242.25	8.0E	118.3	5000.0E	931.5	4.0E	1079.3	2.0E	1291.8
15.0	1211.27	8.0E	114.8	5000.0E	967.2	4.0E	1109.3	2.0E	1280.8
16.0	1180.73	8.0E	111.5	5000.0E	991.3	4.0E	997.9	5000.0E	1008.1
		4.0E	1105.5	5000.0E	1108.6	4.0E	1152.1	2.0E	1171.7
17.0	1150.75	8.0E	108.5	5000.0E	1016.4	4.0E	1022.4	5000.0E	1024.3
		4.0E	1058.5	5000.0E	1063.2	4.0E	1102.6	5000.0E	1108.1
		4.0E	1163.7	5000.0E	1174.4	4.0E	1281.2	5000.0E	1403.7
18.0	1121.42	8.0E	105.6	5000.0E	1027.5	4.0E	1053.0	5000.0E	1057.4
		4.0E	1100.5	5000.0E	1108.1	4.0E	1112.4	5000.0E	1119.8
		4.0E	1121.3	5000.0E	1124.9	4.0E	1172.2	5000.0E	1188.8
		4.0E	1188.8	5000.0E	1194.0	4.0E	1200.2	5000.0E	1200.3
		5000.0E	1531.3	4.0E	1552.0				
19.0	1092.86	8.0E	102.9	5000.0E	1034.6	4.0E	1035.0	5000.0E	1040.4
		4.0E	1063.9	5000.0E	1115.8	4.0E	1184.9	5000.0E	1208.9
		4.0E	1220.9	5000.0E	1221.7	4.0E	1231.0	5000.0E	1552.0
20.0	1065.19	8.0E	98.7	5000.0E	1055.1	4.0E	1069.9	5000.0E	1116.1
		4.0E	1153.4	5000.0E	1164.8	4.0E	1186.0	5000.0E	1205.2
		4.0E	1207.5	5000.0E	1552.0				
21.0	1038.55	8.0E	94.7	5000.0E	1153.1	4.0E	1181.7	5000.0E	1552.0
22.0	1013.05	8.0E	91.0	5000.0E	1552.0				
23.0	988.84	8.0E	87.6	5000.0E	1552.0				
24.0	966.05	8.0E	84.5	5000.0E	1552.0				
25.0	944.82	8.0E	81.6	5000.0E	1552.0				
26.0	925.29	8.0E	78.9	5000.0E	1552.0				
27.0	907.59	8.0E	76.4	5000.0E	1552.0				

WEGG

ROSE HILL, NORTH CAROLINA

DISTANCE TO WAQI CONTOURS

Azimuth	Radiation (mV/m at one km)	Distances to Contours in Km: Contour levels in mV/m.	
		0.500	0.025
10.0	1368.75	358.56	940.74
11.0	1336.92	357.89	945.41
12.0	1305.17	364.59	953.30
13.0	1273.58	370.26	957.00
14.0	1242.25	375.58	974.13
15.0	1211.27	379.75	996.04
16.0	1180.73	383.47	1017.11
17.0	1150.75	386.51	1027.88
18.0	1121.42	389.14	1034.04
19.0	1092.86	391.29	1041.90
20.0	1065.19	397.94	1050.49
21.0	1038.55	404.32	1056.18
22.0	1013.05	409.73	1060.91
23.0	988.84	414.41	1064.89
24.0	966.05	418.39	1068.39
25.0	944.82	421.97	1071.57
26.0	925.29	425.02	1074.23
27.0	907.59	427.91	1076.76