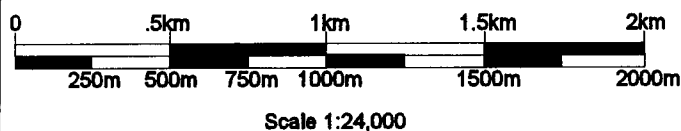
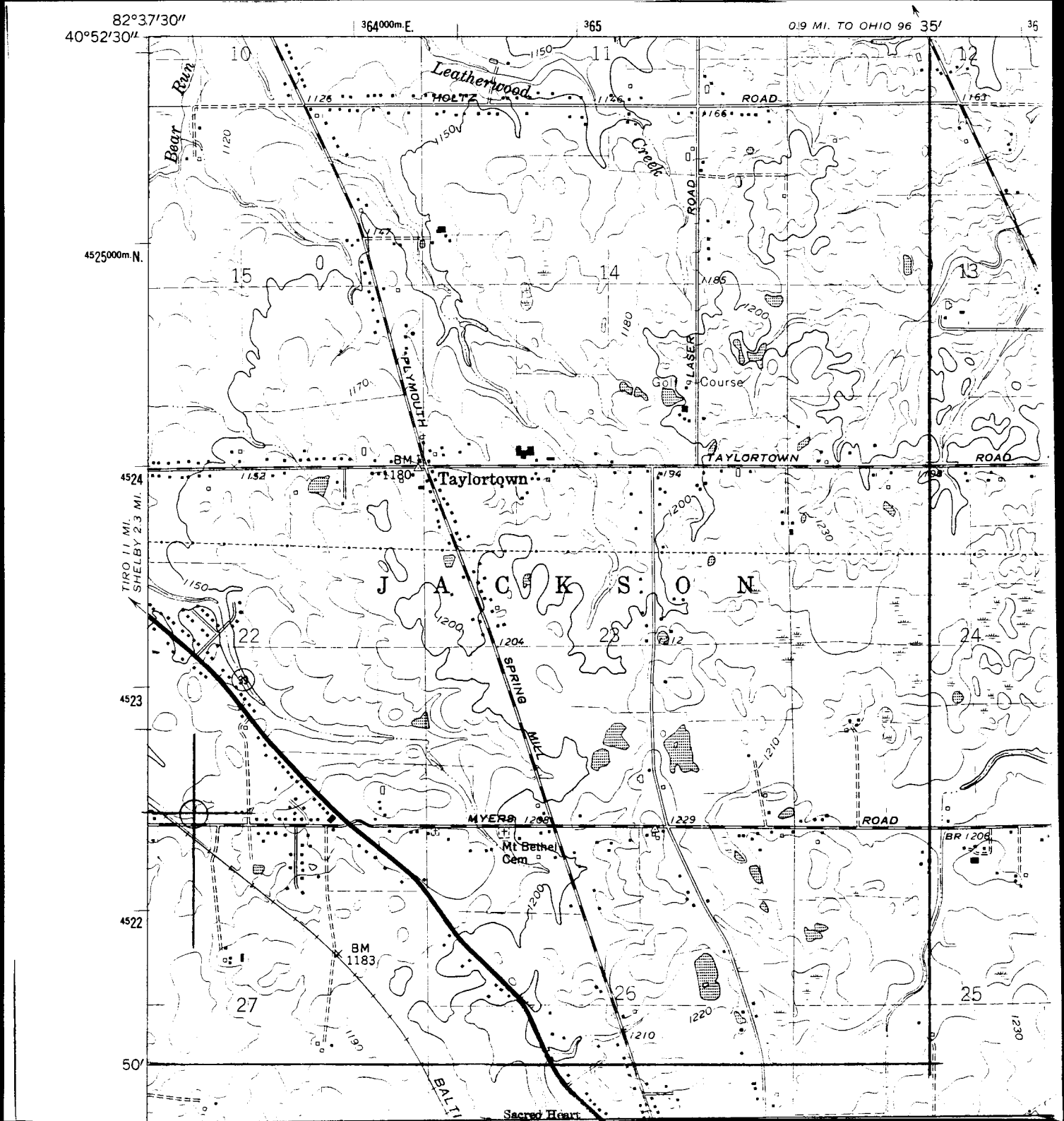


# Exhibit 4

American Family  
Association  
June 2002

Proposed Site:  
Shelby, OH

Site Coordinates:  
Latitude: 40° 50' 37"  
Longitude: 82° 37' 21"

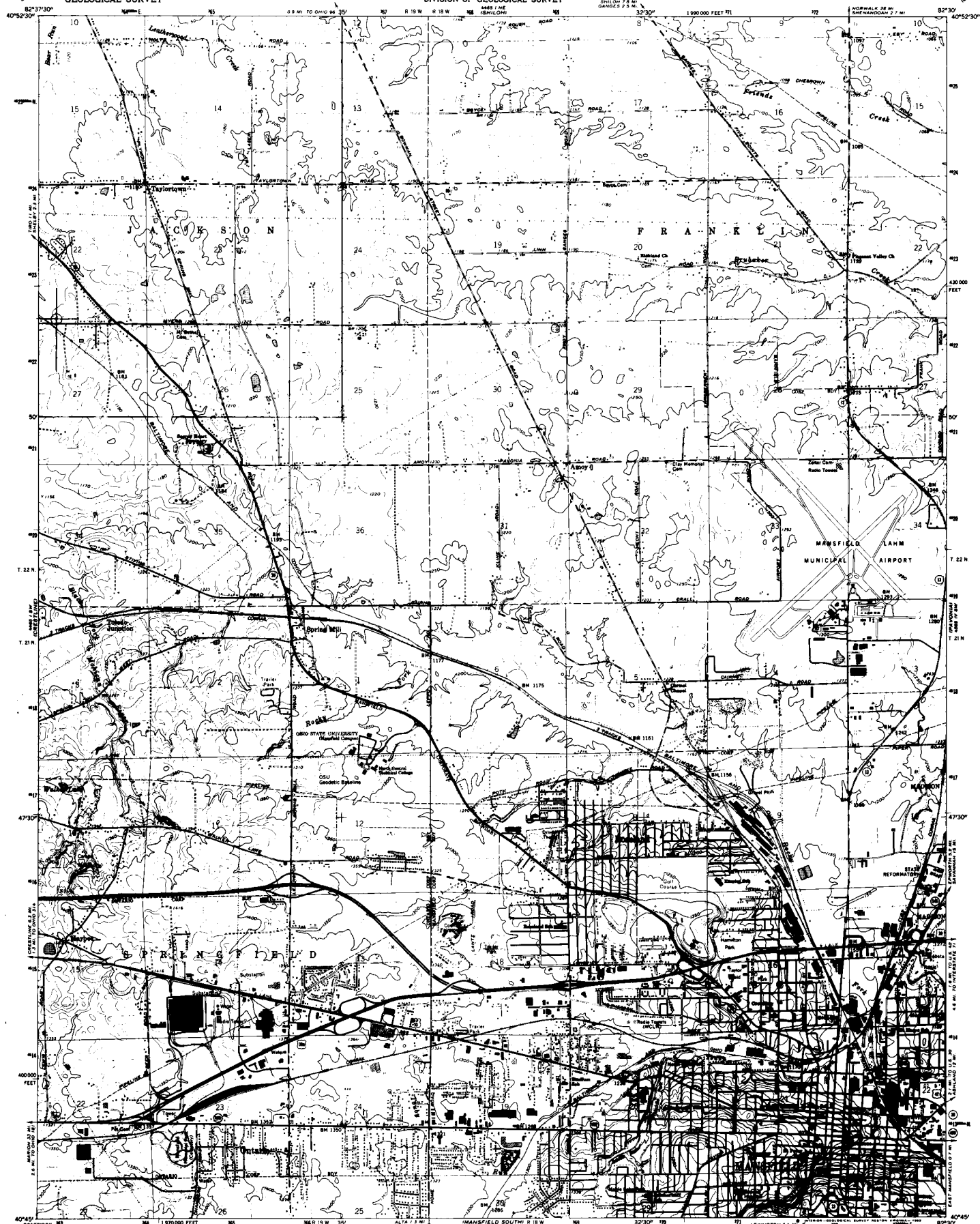


Mansfield North Quadrangle  
Ohio  
7.5 Minute Series (Topographic)

UNITED STATES  
DEPARTMENT OF THE INTERIOR  
GEOLOGICAL SURVEY

STATE OF OHIO  
DEPARTMENT OF TRANSPORTATION  
DEPARTMENT OF NATURAL RESOURCES  
DIVISION OF GEOLOGICAL SURVEY

MANSFIELD NORTH QUADRANGLE  
OHIO - RICHLAND CO  
7.5 MINUTE SERIES (TOPOGRAPHIC)



Mapped, edited, and published by the Geological Survey  
Control by USGS and NOS/NOAA

Topography by photogrammetric methods from aerial photographs  
taken 1955. Field checked 1960

Polygonic projection. 10,000-foot grid ticks based on Ohio coordinate  
system, north zone. 1000-meter Universal Transverse Mercator grid  
ticks, zone 17, shown in blue. 1927 North American Datum

To place on the predicted North American Datum 1983 move the  
projection lines 2 meters south and 10 meters west as shown by  
dashed corner ticks

Five red dashed lines indicate selected fences and field lines where  
generally visible on aerial photographs. This information is unchecked

Red tint indicates areas in which only landmark buildings are shown

Entire area lies within Congress Lands north of the old Seven Ranges  
Land lines based on the Ohio River Base

UTM GRID AND 1982 MAGNETIC NORTH  
DECLINATION AT CENTER OF SHEET

SCALE 1:24,000  
CONTOUR INTERVAL 10 FEET  
NATIONAL GEODETIC VERTICAL DATUM OF 1929



QUADRANGLE LOCATION

ROAD CLASSIFICATION  
Heavy-duty Light-duty  
Medium-duty Unimproved dirt  
U.S. Route State Route

MANSFIELD NORTH, OHIO  
N4045-W8230/7.5

1960  
PHOTOGRAPHED 1962  
DMA 4465-18-82-8215S 1962

THIS MAP COMPLIES WITH NATIONAL MAP ACCURACY STANDARDS  
FOR SALE BY U.S. GEOLOGICAL SURVEY, RESTON, VIRGINIA 20192  
A FOLDER DESCRIBING TOPOGRAPHIC MAPS AND SYMBOLS IS AVAILABLE ON REQUEST

Revisions shown in purple and woodland compiled in cooperation  
with State of Ohio agencies from aerial photographs taken  
1981 and other sources. This information not field  
checked. Map edited 1982