

Exhibit12
Chatanooga, TN

REFERENCE CH# 290D - 105.9 MHz, Pwr= 0.01 kW, HAAT=461.0 M, COR= 674 M DISPLAY DATES
35 07 45 N Average Protected F(50-50)= 12.25 km DATA 10-27-04
85 20 02 W Ave. F(50-10) 40 dBu= 43.1 54 dBu= 18.5 80 dBu= 2.1 100 dBu= .2 SEARCH 10-27-04

CH CITY	CALL	TYPE STATE	AZI. <--	DIST FILE #	LAT. LNG.	Pwr(kW) HAAT(M)	COR(M) INT(km)	PRO(km) LICENSEE	*IN* (Overlap in km)	*OUT*
293C Chattanooga	WSKZ	LIC CN TN	21.4 201.4	3.87 BLH7303	35 09 42 85 19 06	100.000 384	721 11.4	78.6 Citadel Broadcasting Compa	-14.01*	-74.92*
290D Chattanooga	W290BG	CP C TN	168.8 348.8	19.54 BNPFT20030807AHD	34 57 23 85 17 32	0.010 225	435 29.2	8.8 Educational Media Foundati	-21.92	-32.53
288A Rossville	WRXRFM	LIC CN GA	168.8 348.8	19.45 BLH19941122KB	34 57 26 85 17 33	1.550 257	467 2.4	32.1 Capstar Tx Limited Partner	4.77	-12.89*
288A Rossville	WRXRFM	APP CX GA	168.8 348.8	19.54 BPH20031218ACC	34 57 23 85 17 32	1.800 243	453 2.5	32.4 Capstar Tx Limited Partner	4.73	-13.09*
288A Rossville	WRXRFM	APP NCX GA	168.8 348.8	19.54 BPH20031218ACC	34 57 23 85 17 32	1.800 243	453 2.5	32.4 Capstar Tx Limited Partner	4.73	-13.09*
288A Rossville	WRXRFM	APP NCX GA	168.8 348.8	19.54 BPH20031218ACC	34 57 23 85 17 32	1.800 243	453 2.5	32.4 Capstar Tx Limited Partner	4.73	-13.09*
291D Valley Brook	W291BK	CP C TN	65.7 245.7	12.49 BNPFT20030826AOG	35 10 31 85 12 32	0.006 -105	253 3.9	2.8 Way-fm Media Group, Inc.	-3.49	-8.40
290C Nashville	WNRQ«	LIC CY TN	306.8 126.8	170.20 BLH19831212AN	36 02 08 86 50 56	100.000 390	611 182.0	79.0 Capstar Tx Limited Partner	-19.87	64.06
290A Centre	WRHY	LIC CN AL	201.4 21.4	110.23 BLH19930414KB	34 12 14 85 46 20	6.000 28	341 68.3	15.8 Williams Communications, I	30.24	54.17
290A Centre	WRHY.C	CP NCX AL	194.3 14.3	125.93 BMPH20030303ACR	34 01 44 85 40 18	0.530 355	535 82.9	29.3 Williams Communications, I	30.82	53.50
287A Morrison	RADD	ADD TN	317.5 137.5	74.85	35 37 27 85 53 37	6.000 40	420 1.9	18.3 Clear Channel B'csting Lic	65.74	56.35
288A Sparta	WRKKFM	LIC CN TN	353.0 173.0	81.79 BLH19900109KB	35 51 39 85 26 40	1.050 144	539 1.8	22.4 Clear Channel Broadcasting	74.21	59.15
288A Sparta	RDEL	DEL TN	353.0 173.0	81.79	35 51 39 85 26 40	6.000 74	469 2.4	24.6 Clear Channel B'csting Lic	73.57	56.98
289A Rockwood	WWSR	LIC NCN TN	34.2 214.2	99.11 BLH19941028KC	35 51 55 84 42 54	0.930 298	653 46.2	30.6 Southern Media Group, Inc.	45.16	57.53
289A Rockwood	WWSR.C	CP ZCX TN	27.5 207.5	100.49 BPH20030604ACS	35 55 51 84 49 06	0.355 290	859 36.2	24.1 Southern Media Group, Inc.	57.39	66.65
290L1 Coker Creek	AP290	APP TN	81.2 261.2	95.00 BNPL20010615AAL	35 15 20 84 18 08	0.100 -72	352 18.6	5.6 Coker Creek Village, Inc.	64.35	47.17
289D Scottsboro	AP289	APP C AL	232.5 52.5	87.59 BNPFT20030317CXB	34 38 50 86 05 34	0.010 291	492 14.0	10.0 Radio Assist Ministry, Inc	64.06	64.24

ERP and HAAT are on direct line to and from reference station.
 "*"Affixed to 'IN' or 'Out' values = site inside protected contour.
 "«" = Station meets FCC minimum distance spacing for its class.

Exhibit 12 (Compliance with CFR 74.1204)

The proposed FM Translator is located within the protected 60 dBu contour of third adjacent channel station WSKZ, channel 293C, Chattanooga, TN. The predicted F(50-50) field strength of WSKZ at the proposed translator site is 110 dBu. Therefore, the respective predicted interfering contour generated by the proposed FM Translator is 150 dBu. This interfering contour extends less than 2 meters from the proposed transmit antenna, and the area of overlap does not reach the ground (the antenna will be mounted at the 100 meter level on a 113 meter tower).

To confirm the absence of population within the interference aperture, EMF has examined the attached topographic map, which indicates a lack of structures near the proposed tower, and therefore no structure which could be tall enough to enter the 2-meter interference aperture.

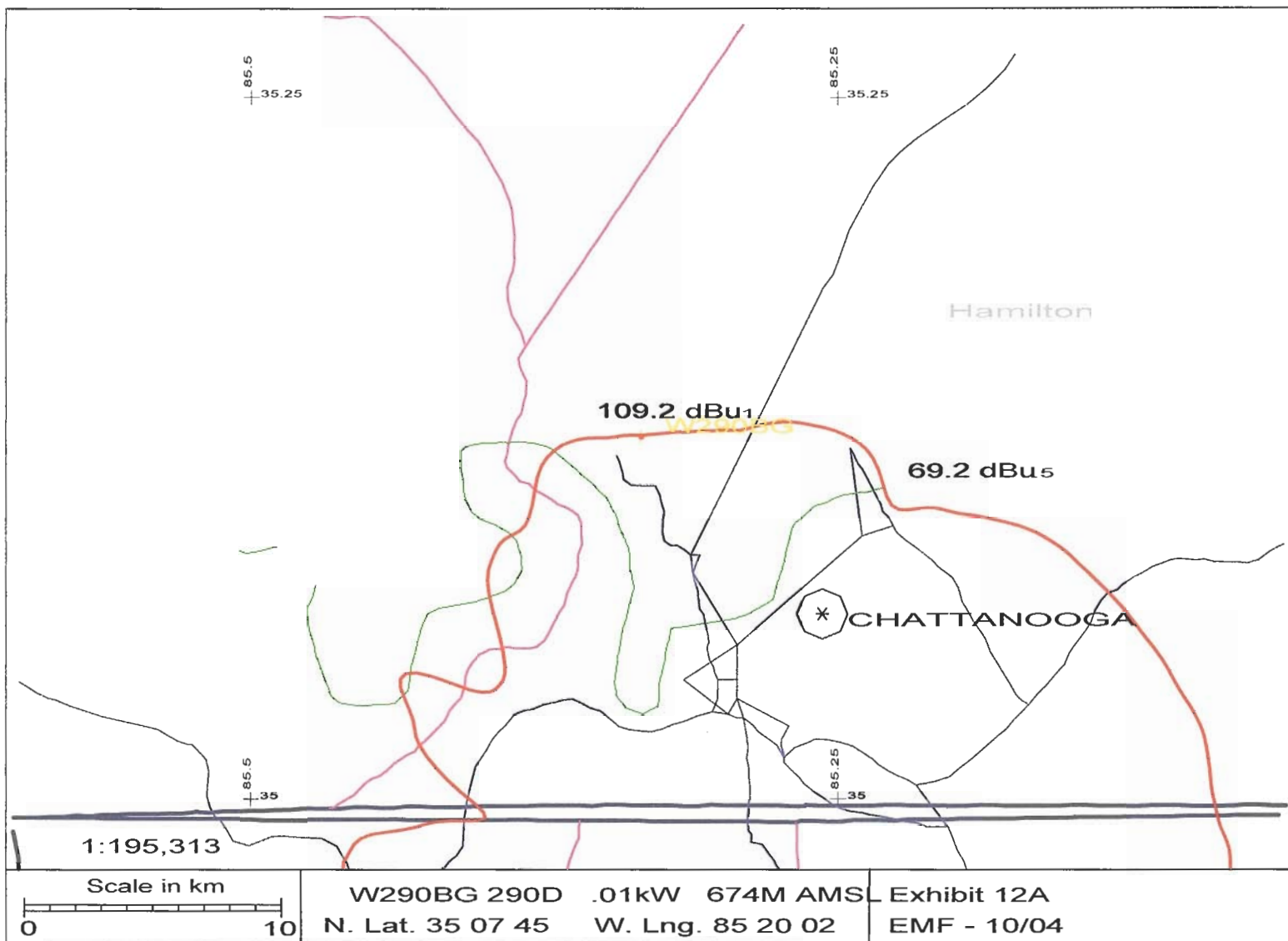
Therefore, EMF respectfully requests a waiver of C.F.R. 74.1204 based on no population within the area of predicted interference.

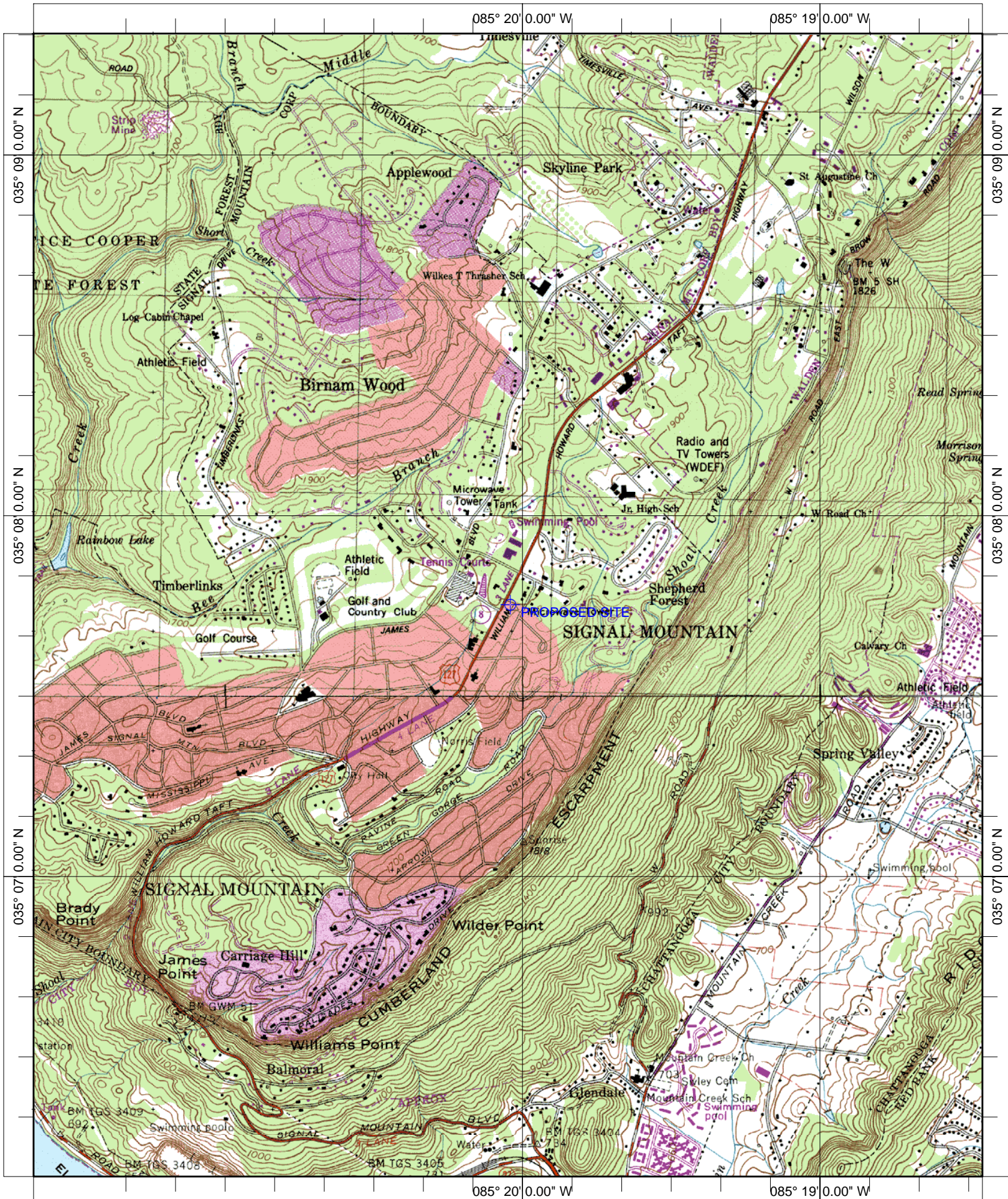
Exhibit 12 (Compliance with CFR 74.1204)

The proposed FM Translator is located within the protected 60 dBu contour of second adjacent channel station WRXR, channel 288A, Rossville, GA. The predicted F(50-50) field strength of WRXR at the proposed translator site is 69.2 dBu, See Exhibit 12A. Therefore, the respective predicted interfering contour generated by the proposed FM Translator is 109.2 dBu. This interfering contour extends less than 77 meters from the proposed transmit antenna, and the area of overlap does not reach the ground (the antenna will be mounted at the 100 meter level on a 113 meter tower).

To confirm the absence of population within the interference aperture, EMF has examined the attached topographic map, which indicates a lack of structures near the proposed tower, and therefore no structure which could be tall enough to enter the 77-meter interference aperture.

Therefore, EMF respectfully requests a waiver of C.F.R. 74.1204 based on no population within the area of predicted interference.





Name: FAIRMOUNT
Date: 10/27/2004
Scale: 1 inch equals 2000 feet

Location: 035° 07' 45.1" N 085° 20' 02.9" W
Caption: Exhibit 12
Site 35-07-45 / 85-20-02

[Send To Printer](#)

[Back To TerraServer](#)

[Change to 11x17 Print Size](#)

[Show Grid Lines](#)

[Change to Landscape](#)

USGS Signal Mountain, Tennessee, United States 21 Mar 1997



0 100M

0 100yd

Image courtesy of the U.S. Geological Survey

© 2004 Microsoft Corporation.

[Terms of Use](#)

[Privacy Statement](#)