

EXHIBIT 13

Waiver Request of Section 74.1204

W201BJ Minor Channel 203

Athens, GA 19 Watts ERP

July 2011

Calvary Chapel of Twin Falls, Inc.

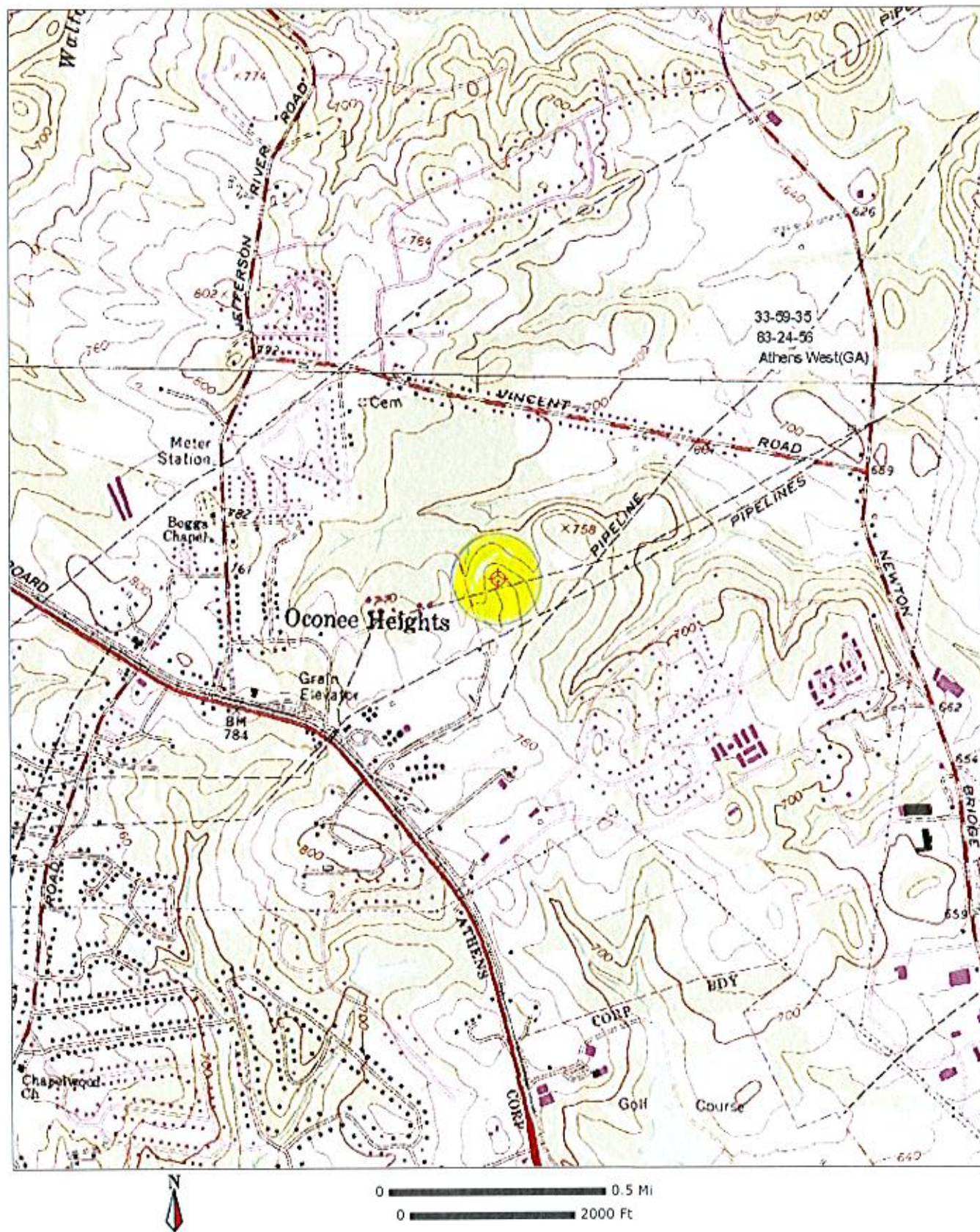
The proposed site is contained entirely inside the service contour of second-adjacent FM Stations WNEE Patterson and WUGA Athens

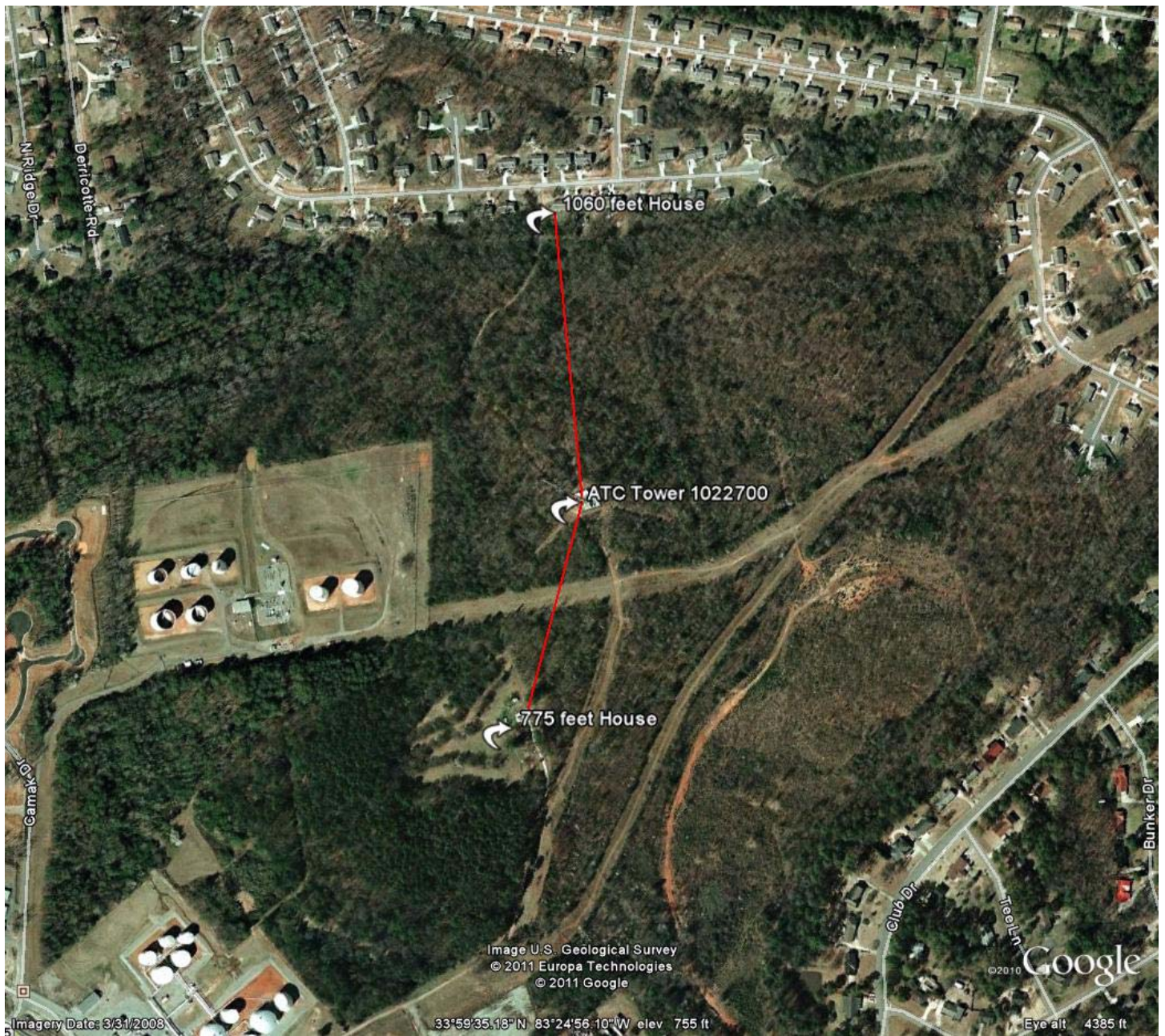
WNEE

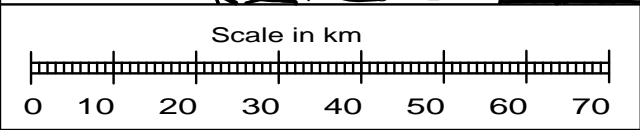
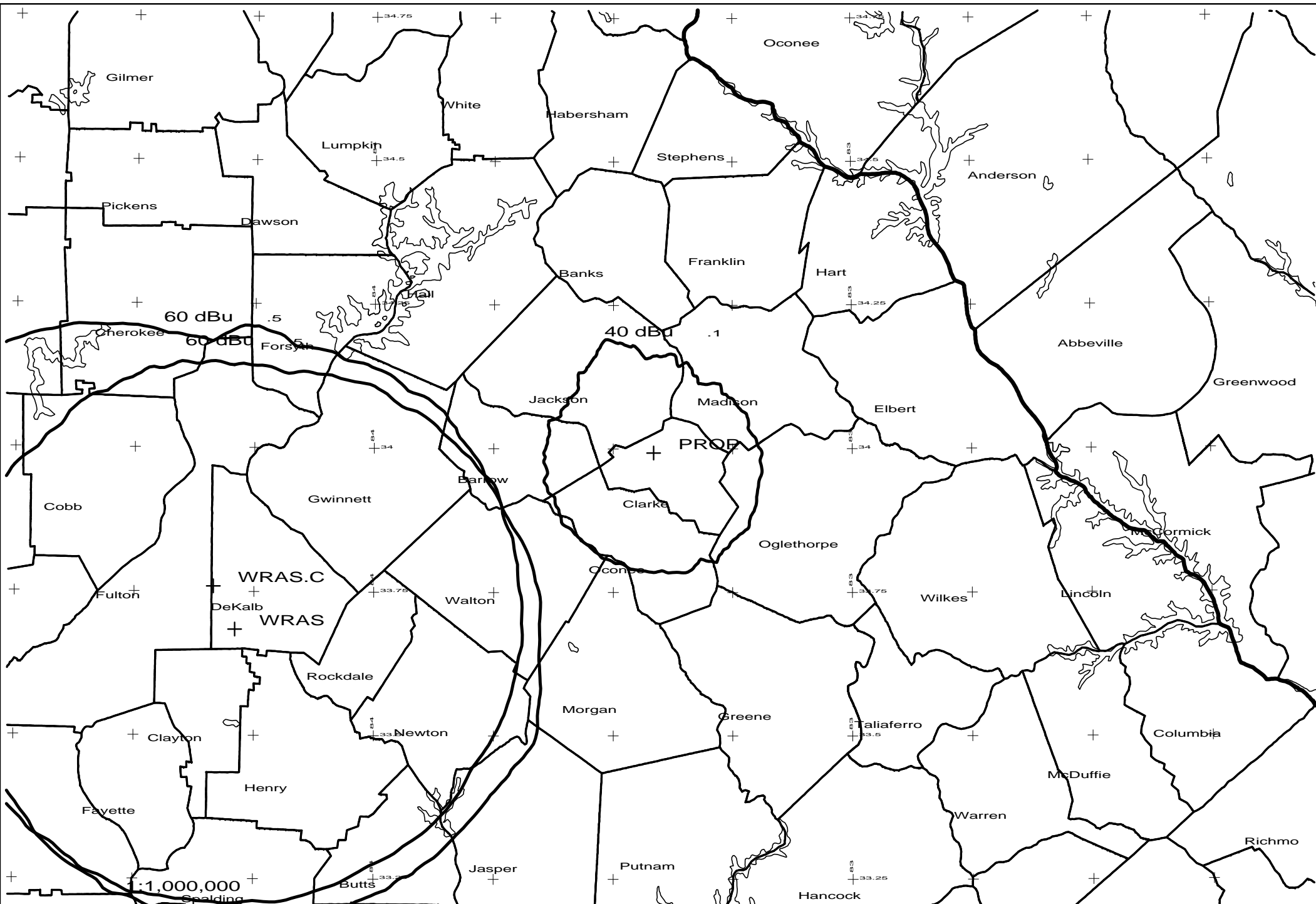
The proposed site is contained entirely inside the service contour of second-adjacent FM Station WNEE, 201A, 6kW, Athens, GA. The level of least arriving protected F(50,50) signal is 68.8-dBu and using the U/D method for calculating proposed interference, the interfering contour is 108.8-dBu (free-space contour method employed). The interfering signal would, in the worst case at the maximum radial, extend 113 meters, or 371 feet, from the center of radiation, which is proposed at 85 meters AGL. Attached is a portion of the USGS Athens West (GA) Quadrangle with a 500 foot contour marked in yellow. This tower is not located close to population, though there are home in the vicinity. A Google Earth map is attached and shows the closest residence is located at a distance of 775 feet. No residences, businesses or major roadways are located within this interference contour, therefore Calvary Chapel of Twin Falls, Inc. respectfully requests a waiver of the FM translator contour overlap regulations with respect to second-adjacent FM Station WNEE Patterson.

WMSL

The proposed site is contained entirely inside the service contour of second-adjacent FM Station WMSL, 205C3, 20kW, Athens, GA. The level of least arriving protected F(50,50) signal is 80.7dBu and using the U/D method for calculating proposed interference, the interfering contour is 120.7-dBu (free-space contour method employed). The interfering signal would, in the worst case at the maximum radial, extend 29 meters, or 94 feet, from the center of radiation, which is proposed at 85 meters AGL. This interference contour does not touch the ground and there are no tall structures around the tower. No residences, businesses or major roadways are located within this interference contour, therefore Calvary Chapel of Twin Falls, Inc. respectfully requests a waiver of the FM translator contour overlap regulations with respect to second-adjacent FM Station WMSL.







PROP 203D .019kW 316M AMSL
N. Lat. 33 59 35 W. Lng. 83 24 56

PROPvsWRAS
CCTF - 07/11