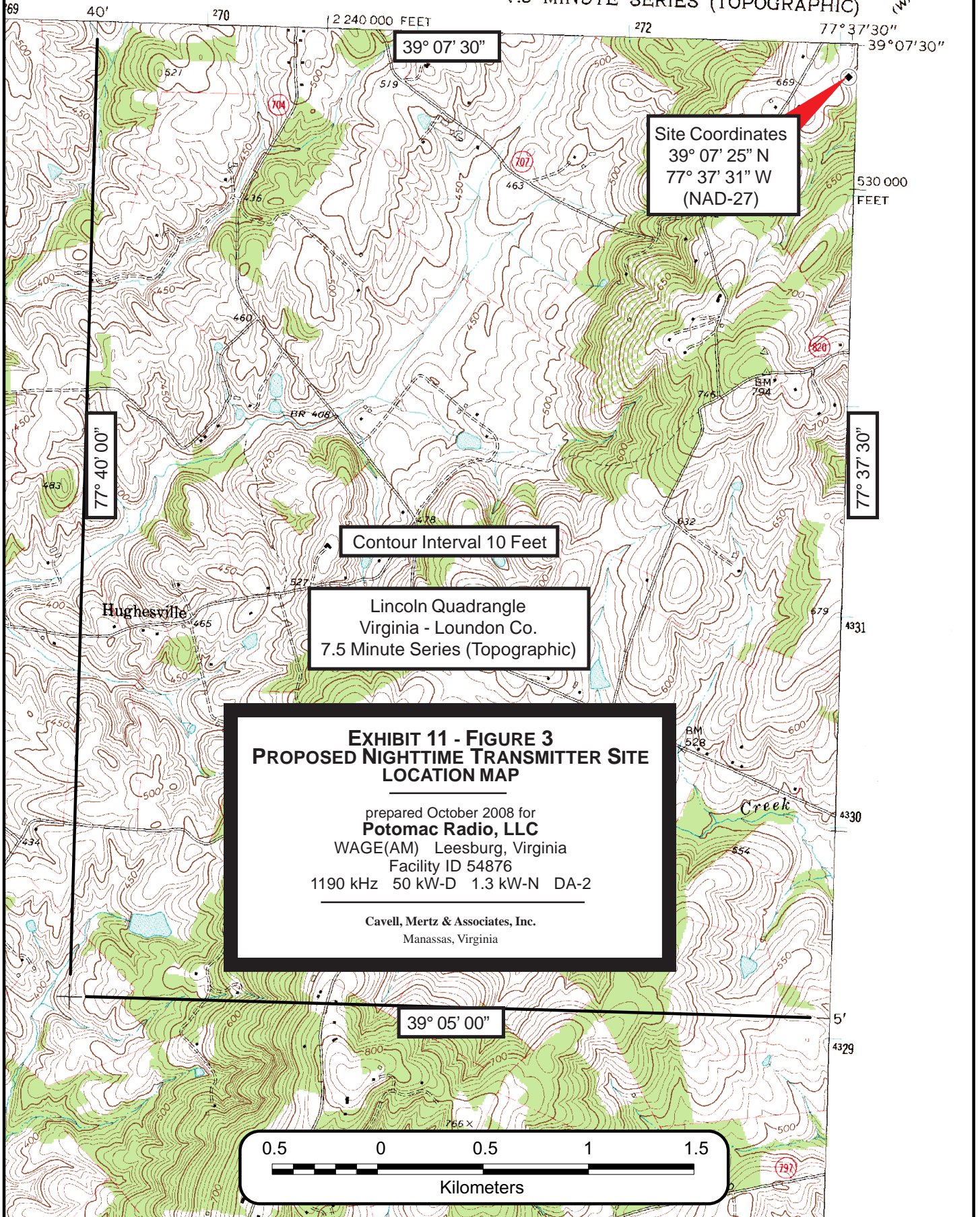
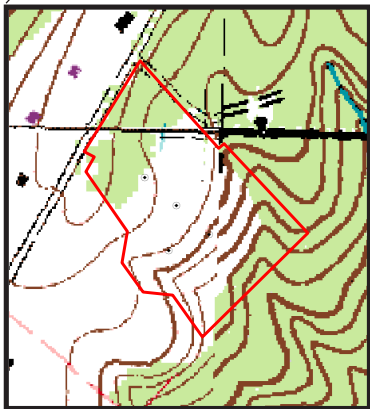
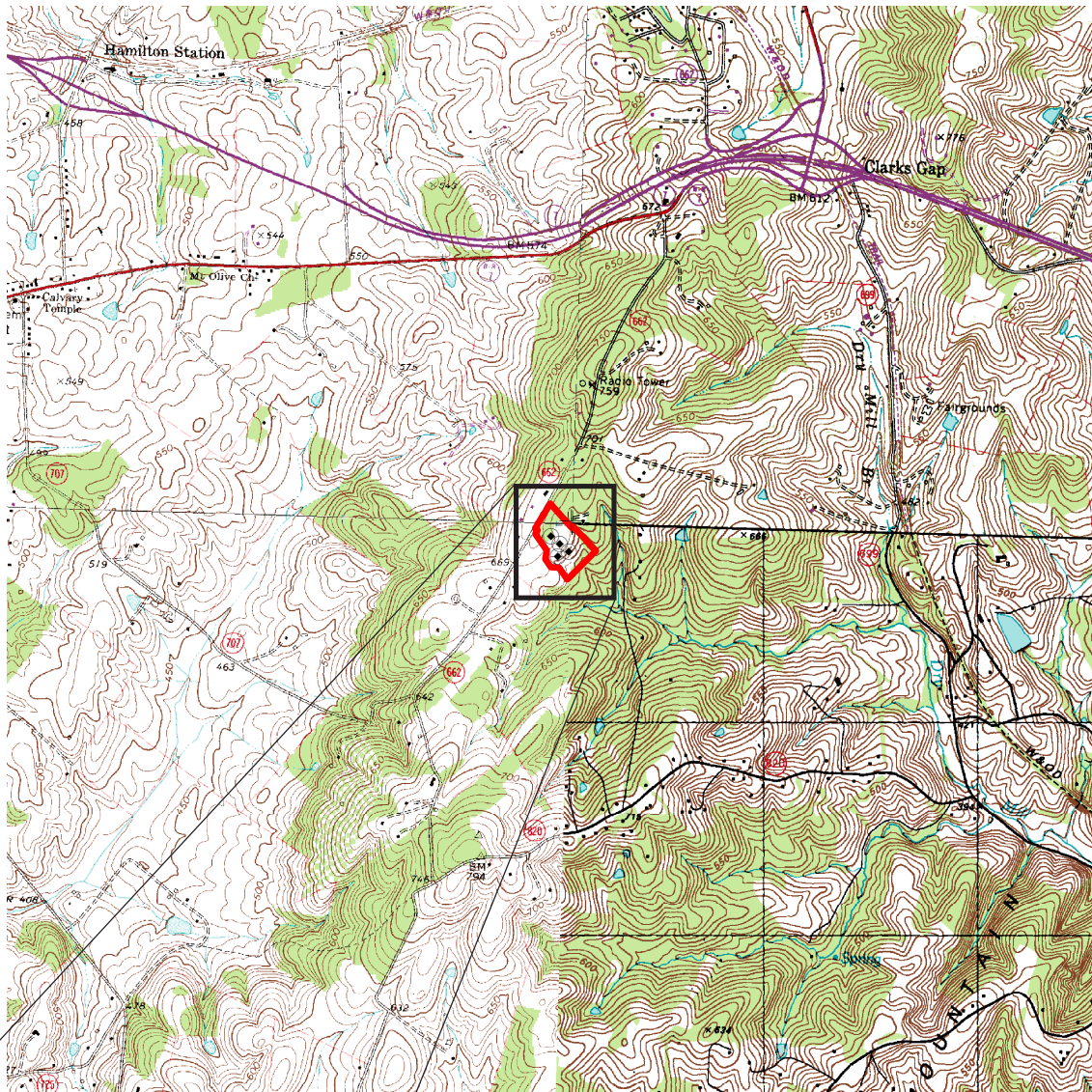


LINCOLN QUADRANGLE
VIRGINIA-LOUDOUN CO.
7.5 MINUTE SERIES (TOPOGRAPHIC)

5462 II NE
(WATERFORD)





**EXHIBIT 11 - FIGURE 3A
PROPOSED NIGHTTIME TRANSMITTER SITE
LOCATION MAP DETAIL**

prepared October 2008 for
Potomac Radio, LLC
 WAGE(AM) Leesburg, Virginia
 Facility ID 54876
 1190 kHz 50 kW-D 1.3 kW-N DA-2

Cavell, Mertz & Associates, Inc.
 Manassas, Virginia



**EXHIBIT 11 - FIGURE 3B
PROPOSED NIGHTTIME
TRANSMITTER SITE
LOCATION PHOTO**

prepared October 2008 for
Potomac Radio, LLC
WAGE(AM) Leesburg, Virginia
Facility ID 54876
1190 kHz 50 kW-D 1.3 kW-N DA-2

Cavell, Mertz & Associates, Inc.
Manassas, Virginia

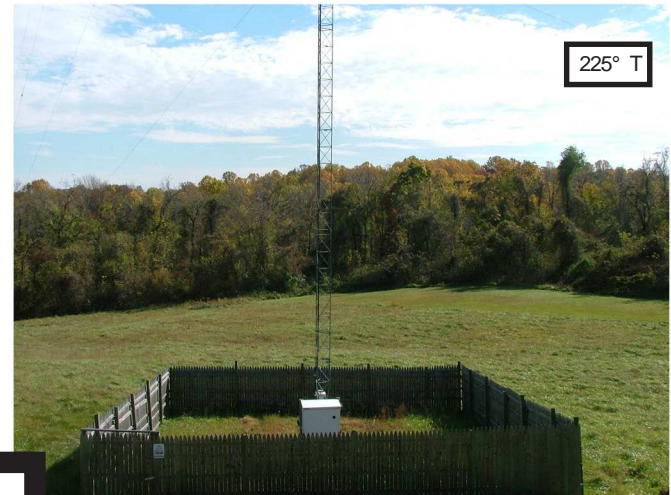


EXHIBIT 11 - FIGURE 3C
PROPOSED NIGHTTIME
TRANSMITTER SITE
LOCATION PHOTOS

prepared October 2008 for
Potomac Radio, LLC
WAGE(AM) Leesburg, Virginia
Facility ID 54876
1190 kHz 50 kW-D 1.3 kW-N DA-2

Cavell, Mertz & Associates, Inc.
Manassas, Virginia





**EXHIBIT 11 - FIGURE 3C
PROPOSED NIGHTTIME
TRANSMITTER SITE
LOCATION PHOTOS**

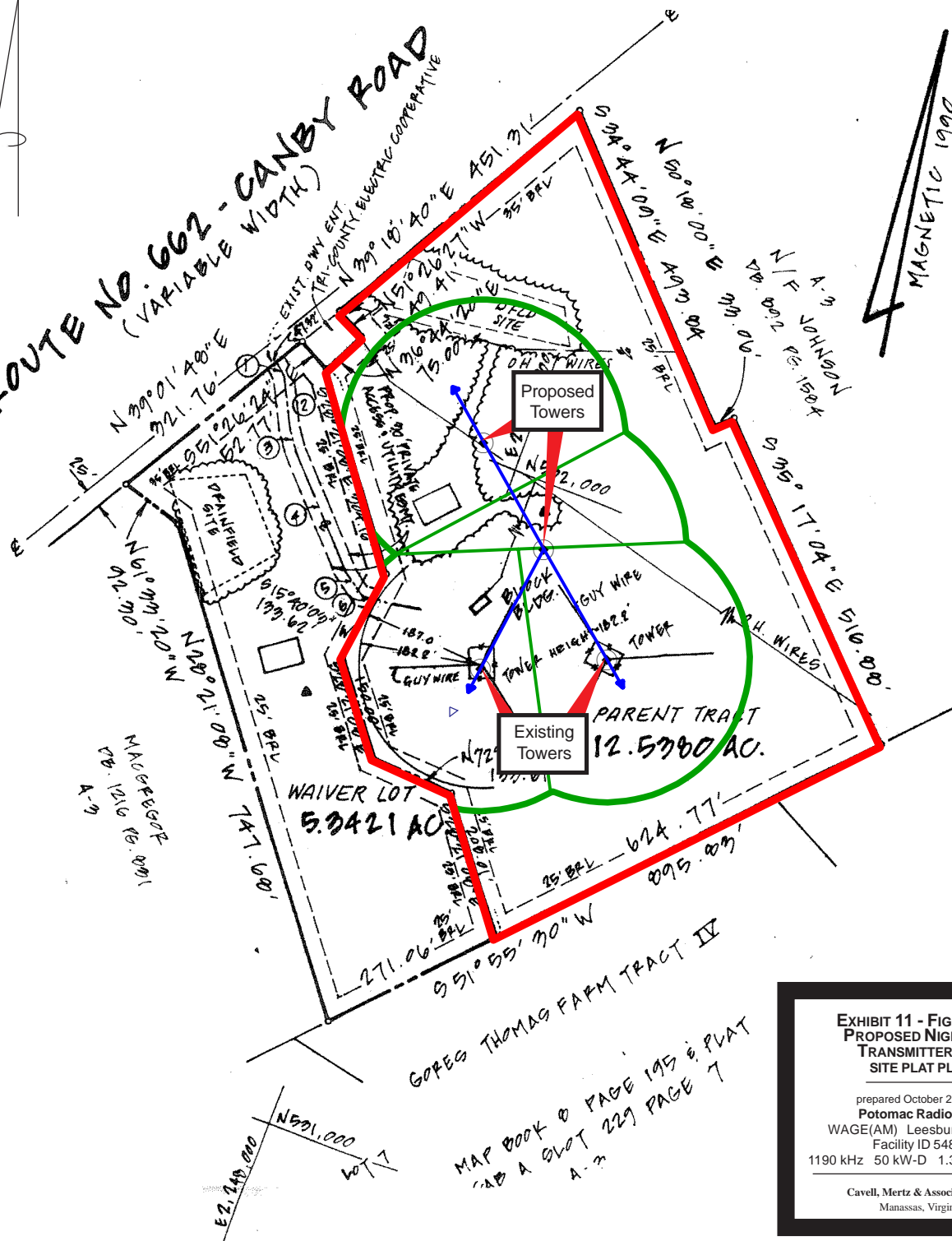
prepared October 2008 for
Potomac Radio, LLC
WAGE(AM) Leesburg, Virginia
Facility ID 54876
1190 kHz 50 kW-D 1.3 kW-N DA-2

Cavell, Mertz & Associates, Inc.
Manassas, Virginia





ROUTE NO. 662 - CANBY ROAD
(VARIABLE WIDTH)



**EXHIBIT 11 - FIGURE 3D
PROPOSED NIGHTTIME
TRANSMITTER SITE
SITE PLAT PLAN**

prepared October 2008 for
Potomac Radio, LLC
WAGE(AM) Leesburg, Virginia
Facility ID 54876
1190 kHz 50 kW-D 1.3 kW-N DA-2

Cavell, Mertz & Associates, Inc.
Manassas, Virginia

0 200 400
US survey feet

Note:
The ground system will consist of 120 equally spaced (every 3°), #10 AWG copper wire radials buried around each tower, each radial 90° (62.5 m or 205 ft) in length, except where terminated in common 4" transverse copper straps. A 4" wide copper strap will also be installed between each Tower. A 24 ft square expanded copper mesh screen will surround each tower base.

0 200 400
US survey feet