

# Exhibit 12.1 - Copy of Existing Antenna Structure Registration

**Registration Detail**

Reg Number	1015320	Status	Constructed
File Number	A0018321	Constructed	07/14/1986
FAA Study		EMI	No
FAA Issue Date		NEPA	No

**Antenna Structure**

Structure Type TOWER - Free standing or Guyed Structure used for Communications Purposes

**Location** (in NAD83 Coordinates)

Lat/Long 35-34-04.0 N 082-23-01.0 W ATOP FLAT TOP MOUNTAIN  
 City, State FAIRVIEW , NC  
 Center of  
 AM Array

**Heights (meters)**

Elevation of Site Above Mean Sea Level	Overall Height Above Ground (AGL)
1333.0	60.0
Overall Height Above Mean Sea Level	Overall Height Above Ground w/o Appurtenances
1393.0	52.0

**Painting and Lighting Specifications**

None  
 -

**Owner & Contact Information**

FRN	Licensee ID
<b>Owner</b>	
MANNING, LARRY DBA = L & M COMMUNICATIONS	P: (704)696-9863
101 MASON ST	E:
P.O. Box 664	
MOUNTAIN HOME , NC 28758	

**Contact**

P:  
 E:

**Last Action Status**

Status	Constructed	Received	02/27/1997
Purpose	New	Entered	02/28/1997
Mode	Mail In (Manual)		

**Related Applications**

02/27/1997 A0018321 - New (NE)  
 -

**Comments****Comments**

None  
 -

**Automated Letters**

None  
 -



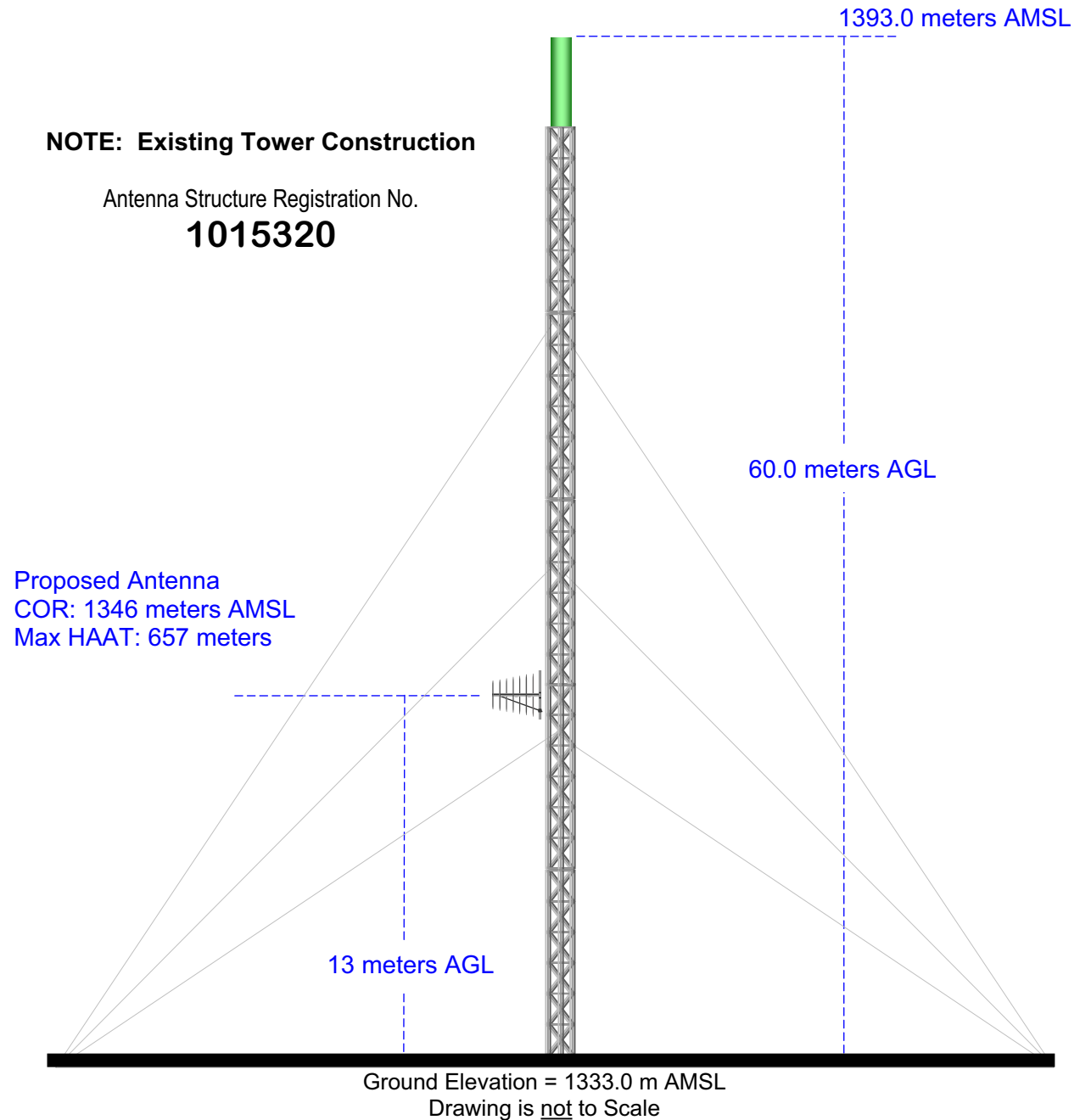
## EXHIBIT 12.2

# VERTICAL PLAN OF ANTENNA SYSTEM

---

The site is located on Flat Top Mountain,  
City of Fairview, Buncombe County, North Carolina.

Site Location  
NL: 35° 34' 04"  
WL: 82° 23' 02"

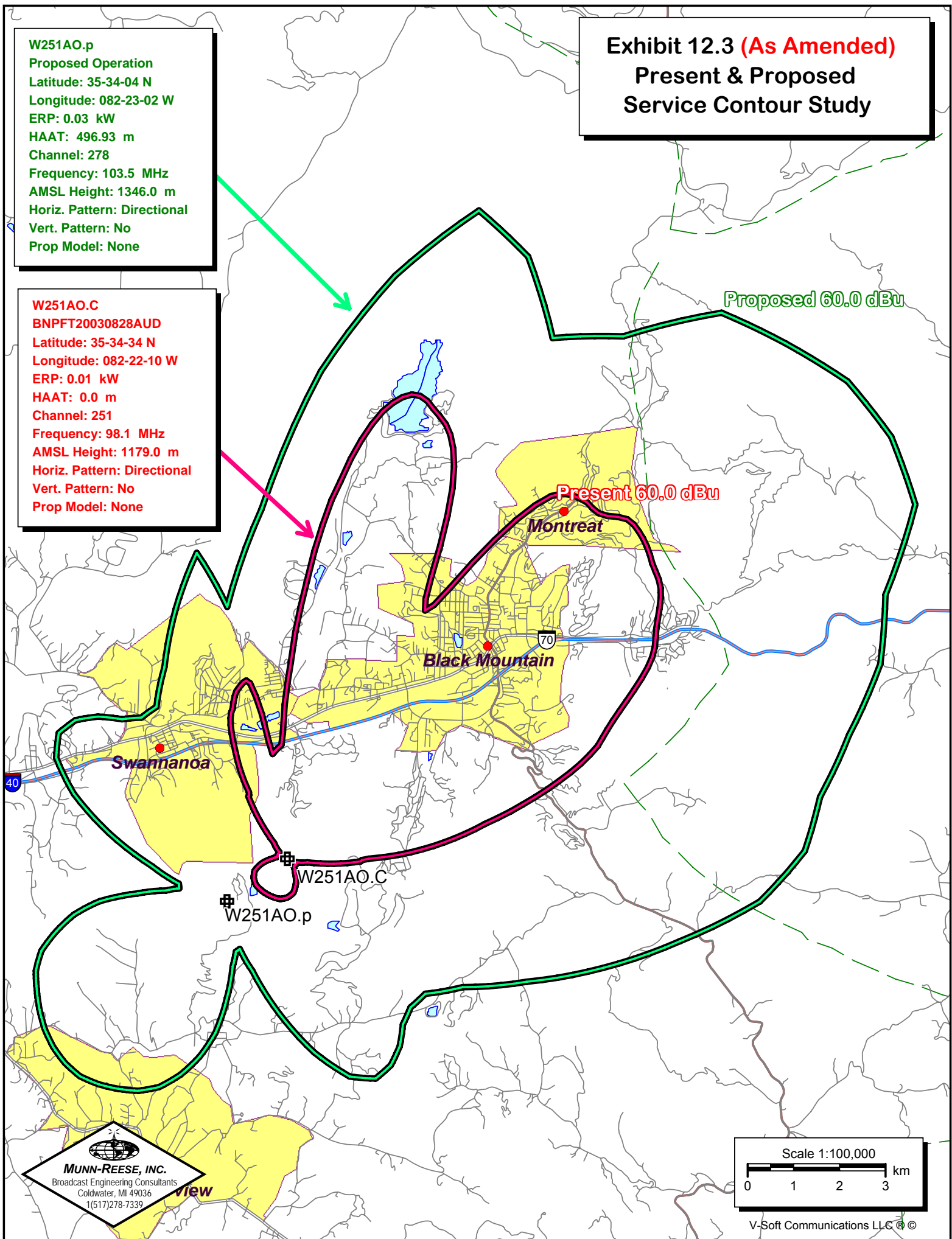


**MUNN-REESE, INC.**  
Broadcast Engineering Consultants  
Coldwater, MI 49036

**Exhibit 12.3 (As Amended)**  
**Present & Proposed**  
**Service Contour Study**

**W251AO.p**  
Proposed Operation  
Latitude: 35-34-04 N  
Longitude: 082-23-02 W  
ERP: 0.03 kW  
HAAT: 496.93 m  
Channel: 278  
Frequency: 103.5 MHz  
AMSL Height: 1346.0 m  
Horiz. Pattern: Directional  
Vert. Pattern: No  
Prop Model: None

**W251AO.C**  
BNPFT20030828AUD  
Latitude: 35-34-34 N  
Longitude: 082-22-10 W  
ERP: 0.01 kW  
HAAT: 0.0 m  
Channel: 251  
Frequency: 98.1 MHz  
AMSL Height: 1179.0 m  
Horiz. Pattern: Directional  
Vert. Pattern: No  
Prop Model: None



Scale 1:100,000

0 1 2 3 km

V-Soft Communications LLC ©



**MUNN-REESE, INC.**  
Broadcast Engineering Consultants  
Coldwater, MI 49036  
1(517)278-7339

WOXL-FM  
BLH20020220AAL  
Latitude: 35-35-23 N  
Longitude: 082-40-26 W  
ERP: 1.85 kW  
HAAT: 357.0 m  
Channel: 243  
Frequency: 96.5 MHz  
AMSL Height: 1105.0 m  
Horiz. Pattern: Directional  
Vert. Pattern: No  
Prop Model: None

**Exhibit 12.4 (As Amended)**  
**Present & Primary**  
**Service Contour Study**

Present 60.0 dBu

Proposed 60.0 dBu

W251AO.p  
Proposed Operation  
Latitude: 35-34-04 N  
Longitude: 082-23-02 W  
ERP: 0.03 kW  
HAAT: 496.93 m  
Channel: 278  
Frequency: 103.5 MHz  
AMSL Height: 1346.0 m  
Horiz. Pattern: Directional  
Vert. Pattern: No  
Prop Model: None



WOXL-FM

W251AO.p

Haywood

Buncombe

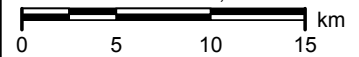
Henderson

Transylvania



**MUNN-REESE, INC.**  
Broadcast Engineering Consultants  
Coldwater, MI 49036  
1(517)278-7339

Scale 1:400,000



# Exhibit 12.5 (As Amended)

## Tabulation of Proposed Allocation

Tabulations of contours will be supplied upon request.

REFERENCE		CH# 251D - 98.1 MHz, Pwr= 0.03 kW, HAAT=502.1M, COR= 1346 M								DISPLAY DATES	
35 34 04 N.		Average Protected F(50-50)= 17.1 km								DATA	10-22-05
82 23 02 W.		Ave. F(50-10) 40 dBu= 58.5 54 dBu= 25.9 80 dBu= 3.5 100 dBu= .4								SEARCH	10-25-05
CH CITY	CALL	TYPE STATE	AZI. <--	DIST FILE #	LAT. LNG.	Pwr(kW) HAAT(M)	COR(M) INT(km)	PRO(km) LICENSEE	*IN* (Overlap in km)	*OUT*	
251D Black Mountain	W251AO	APP DC NC	0.0 0.0	0.00 BNPFT20051018ABV	35 34 04 82 23 02	0.007 147	1346 21.6	6.4 Frank G Mccoy	-27.58*<	-26.47*<	
251D Black Mountain	W251AO	CP DC NC	54.7 234.7	1.60 BNPFT20030828AUD	35 34 34 82 22 10	0.000 365	1179 0.0	0.0 Frank G. Mccoy	-16.24*<	-59.67*<	
251D Asheville	W251AN	CP C NC	288.5 108.4	17.99 BNPFT20030828ANN	35 37 08 82 34 20	0.004 -55	683 8.0	2.5 Isothermal Community Colle	8.76	6.07	
251C1 Seneca	WHZT.C	CP ZCX SC	191.9 11.7	98.15 BPH20040413ABO	34 42 07 82 36 19	29.377 272	572 140.1	58.1 Cxr Holdings, L.l.c.	-45.52<	20.07	
251C0 Seneca	WHZT	LIC CN SC	209.4 29.1	112.07 BLH19980629KB	34 41 15 82 59 13	100.000 305	554 172.5	72.7 Cxr Holdings, L.l.c.	-65.12<	14.71	
<b>253C</b> <b>Kingsport</b>	<b>WTFM</b>	<b>LIC ZCY</b> <b>TN</b>	<b>12.9</b> <b>193.1</b>	<b>98.39</b> <b>BLH19950213KA</b>	<b>36 25 54</b> <b>82 08 15</b>	<b>74.000</b> <b>704</b>	<b>1305</b> <b>13.3</b>	<b>92.6</b> <b>Holston Valley Broadcastin</b>	<b>72.03</b>	<b>5.55</b>	
249D Chimney Rock	AP249	APP DCN NC	128.5 308.6	16.91 BNPFT20030312AQR	35 28 23 82 14 16	0.000 246	1064 0.0	0.0 Frank G. Mccoy	12.13	16.86	
248D Chimney Rock	AP248	APP DC NC	128.5 308.6	16.91 BNPFT20030312AQR	35 28 23 82 14 16	0.000 1290	2108 0.0	0.0 Frank G. Mccoy	12.13	16.86	
250C Concord	WPEG	LIC DCY NC	101.3 282.0	113.83 BLH19901207KC	35 21 44 81 09 19	76.249 474	727 122.0	82.4 Infinity Radio Holdings, I	-16.04<	19.35	
<b>249D</b> <b>Asheville</b>	<b>W249AR</b>	<b>LIC C</b> <b>NC</b>	<b>275.4</b> <b>95.2</b>	<b>26.40</b> <b>BLFT20000811AAU</b>	<b>35 35 23</b> <b>82 40 26</b>	<b>0.100</b> <b>441</b>	<b>1089</b> <b>0.7</b>	<b>21.7</b> <b>Entercom Greenville Licens</b>	<b>23.85</b>	<b>4.71</b>	
250D Tryon	W250AN	CP DC NC	159.2 339.3	35.78 BNPFT20030828ASI	35 15 59 82 14 37	0.000 428	1007 0.0	0.0 Western North Carolina Pub	33.85	32.14	
251C Galax	WBRF	LIC DEN VA	51.4 232.3	178.51 BLH19910423KA	36 33 34 80 49 25	20.304 553	1149 162.2	73.1 Blue Ridge Radio, Inc.	-1.05<	45.67	
250D Lake Junaluska	AP250	APP DC NC	270.2 89.9	47.42 BNPFT20030317AGQ	35 34 06 82 54 25	0.000 491	1387 0.0	0.0 Frank G. Mccoy	44.75	42.47	
252D Clyde	AP252	APP C NC	270.2 89.9	47.49 BNPFT20030317EPV	35 34 06 82 54 28	0.010 480	1377 18.9	12.4 Georgia-carolina Radiocast	25.92	30.13	
<b>248D</b> <b>Brevard</b> <b>Translator for WLFJ, Greenville, SC</b>	<b>970915</b>	<b>APP CN</b> <b>NC</b>	<b>212.0</b> <b>31.8</b>	<b>50.76</b> <b>BPFT19970915TG</b>	<b>35 10 47</b> <b>82 40 47</b>	<b>0.010</b> <b>451</b>	<b>1177</b> <b>0.2</b>	<b>12.2</b> <b>Radio Training Network</b>	<b>45.75</b>	<b>38.55</b>	

ERP and HAAT on direct-line with reference station.

\*\*\*affixed to 'IN' or 'Out' values = site inside protected contour.

"<" = Contour Overlap

**Bold Italicized Red print indicates contour protection maps as included in Exhibit 12.6.**

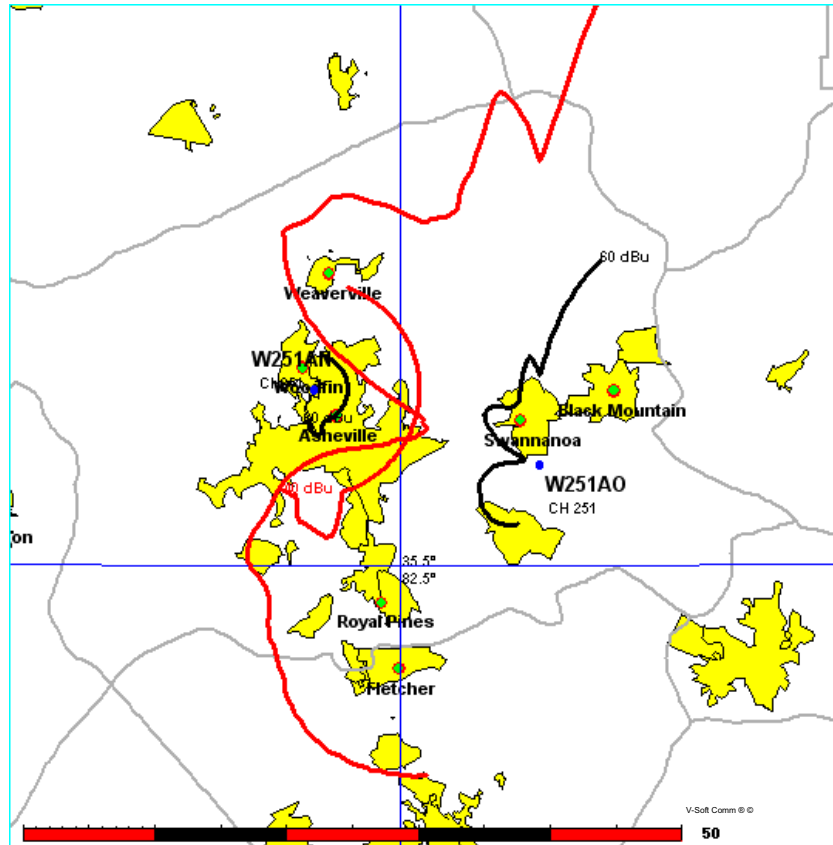
# Exhibit 12.6 (As Amended)

## Contour Protection Towards Select Stations

page 1 of 2

FMCommander Allocation Study  
09-12-2005

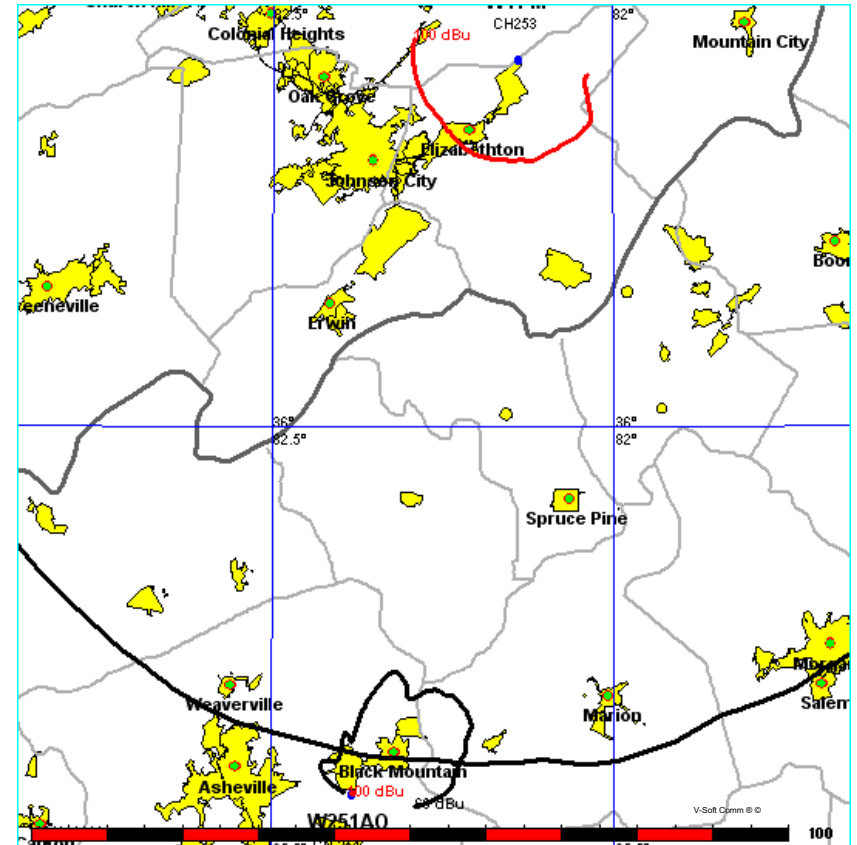
W251AO CH 251 D 970915 CH 248 D BPFT19970915TG  
.030 kW 1346 M COR DA .01 kW, 1177 M COR  
Prot. = 60 dBu Prot. = 60 dBu  
Intef. = 40 dBu Intef. = 40 dBu Scale = 1:575,000



Tabulations of contours will be supplied upon request.

FMCommander Allocation Study  
09-12-2005

W251AO CH 251 D WTFM CH 253 C BLH19950213KA  
.030 kW 1346 M COR DA 74 kW, 1305 M COR DA  
Prot. = 60 dBu Prot. = 60 dBu  
Intef. = 100 dBu Intef. = 100 dBu Scale = 1:1,000,000



Tabulations of contours will be supplied upon request.

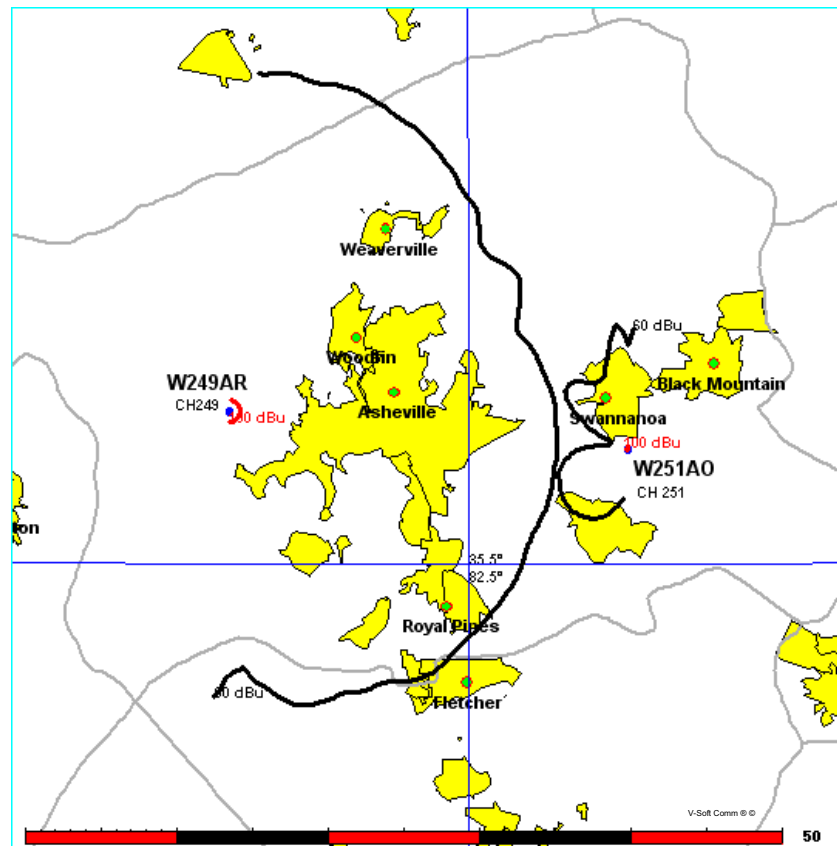


# Exhibit 12.6 (As Amended)

## Contour Protection Towards Select Stations

FMCommander Allocation Study  
09-12-2005

W251AO CH 251 D	W249AR CH 249 D	BLFT20000811AAU
.030 kW, 1346 M COR DA	.1 kW, 1089 M COR	
Prot. = 60 dBu	Prot. = 60 dBu	
Intef. = 100 dBu	Intef. = 100 dBu	Scale = 1:500,000



Tabulations of contours will be supplied upon request.

