

Compliance with 47 C.F.R. 73.525

There are several considerations outlined in 47 C.F.R. 73.525 for TV channel 6 protection. Outlined below are the various factors as they apply to the proposed operation and KSRE-TV.

1. Distance between proposed operation and KSRE-TV

47 C.F.R. 73.525(a)(1) requires a minimum separation of 257 kilometers for a channel 202 operation. The distance between the proposed station and KSRE-TV is 143.75 kilometers.

2. Population Limitation

When a proposed non-commercial station is not co-located with the channel 6 station in question, the applicant is required to show that the interference area (as predicted by the procedures outlined in 47 C.F.R. 73.525(e)(1)) contains no more than 3,000 persons. As can be seen in exhibit 18 A the corresponding contours for the TV channel 6 and the proposed station do not cross. Therefore, there is no interference area.

3. Vertically Polarized Transmissions

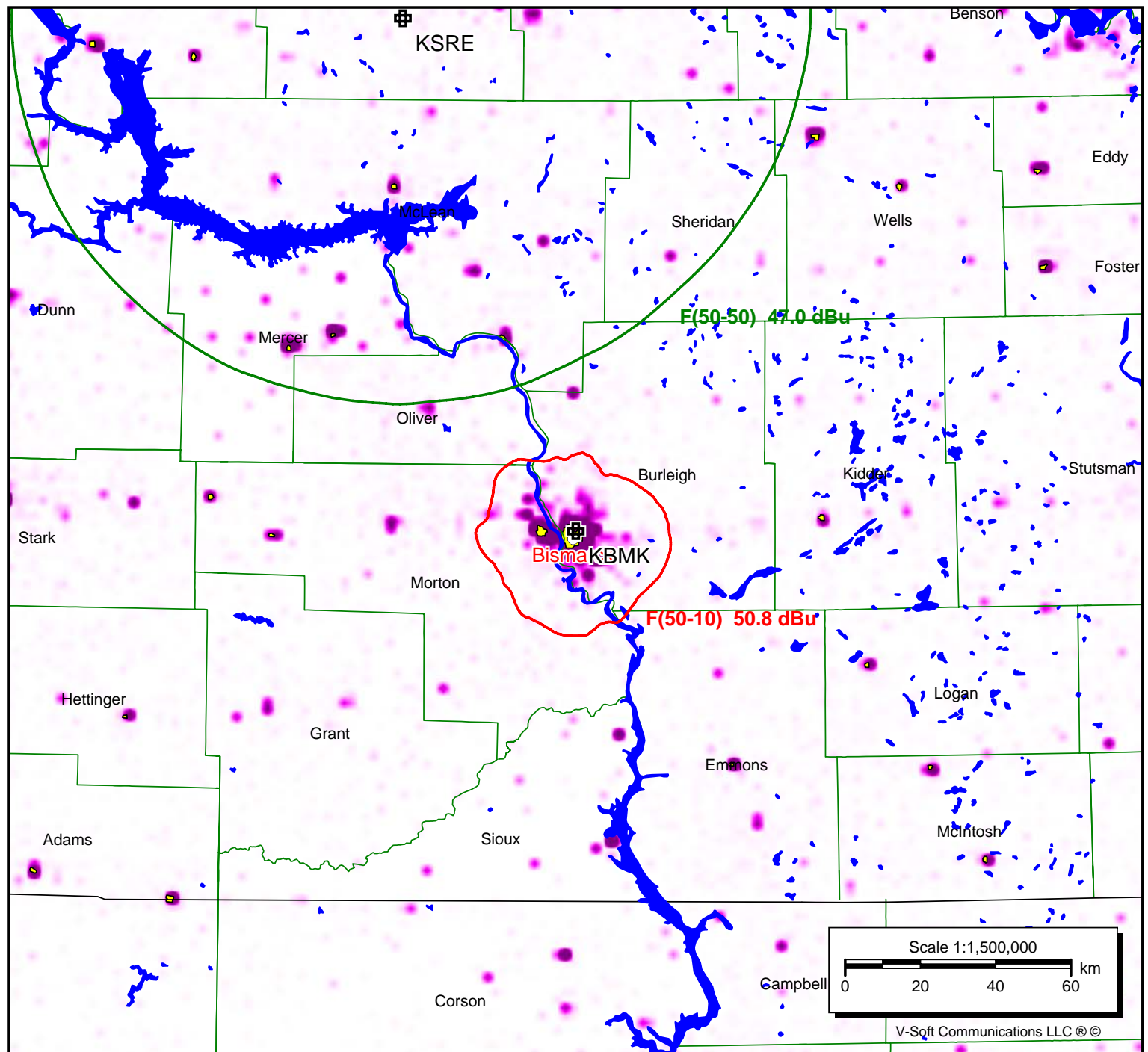
When an applicant wishes to use vertically polarized transmissions only, C.F.R. 74.525(e)(4) limits the vertical ERP to the maximum permissible horizontally polarized ERP multiplied by 40 (if the predicted interference area lies entirely outside the limits of a city of 50,000 persons) or 10 (if not). The maximum permissible horizontally polarized ERP for the proposed facility is 0.2125 kilowatts. Since the predicted interference area lies entirely outside the limits of a city of 50,000 persons, that is multiplied by 40 to obtain the vertical-only ERP of 8.5 kilowatts specified in this application.

For the reasons outlined above, the proposed operation fully complies with the provisions of 47 C.F.R. 73.525.

Exhibit 18 - A

KBMK

Latitude: 46-49-38 N
Longitude: 100-46-28 W
ERP: 0.2125 kW
Channel: 202
Frequency: 88.3 MHz
AMSL Height: 652.0 m
Elevation: 565.0 m
Horiz. Pattern: Omni
Prop Model: None



prepared by Cris Baron