

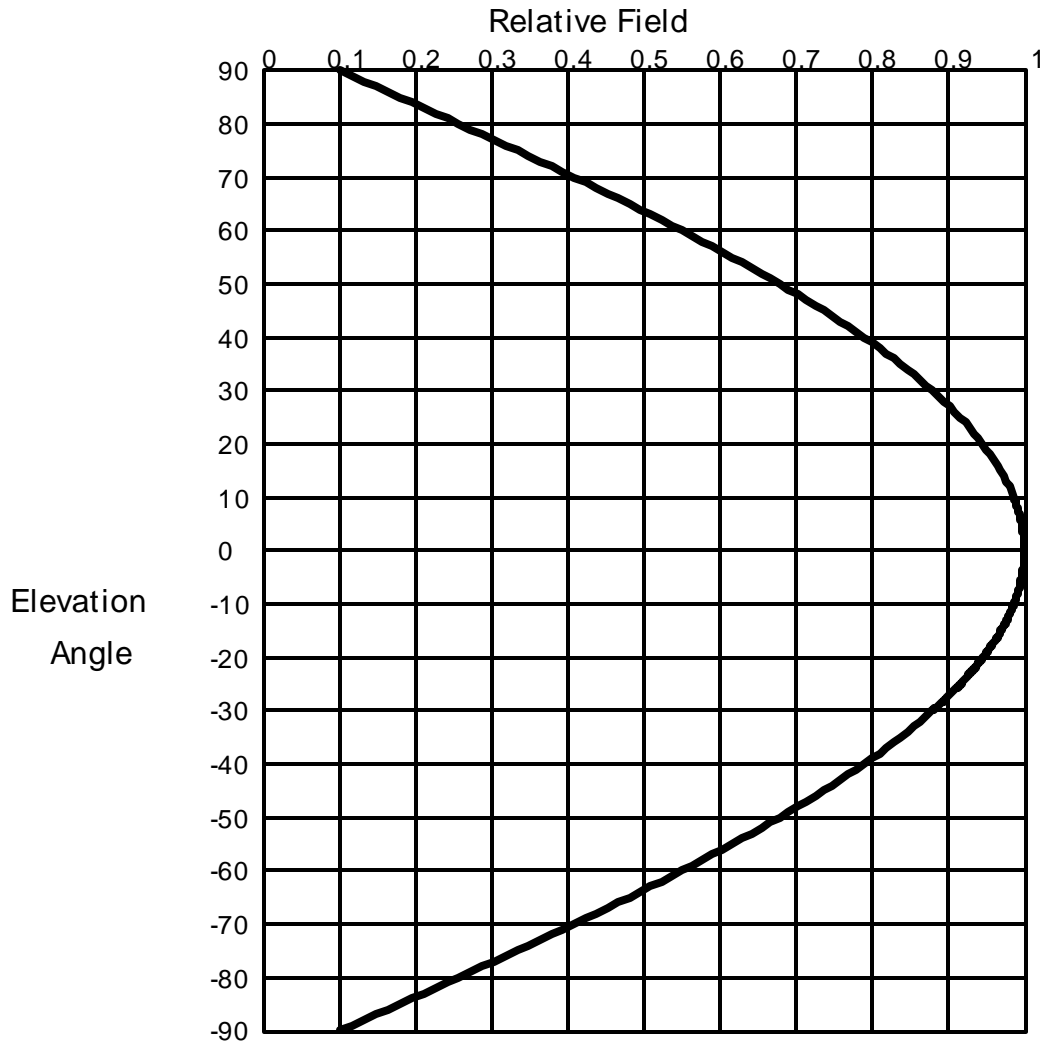
2nd Adjacent Waiver Exhibit

Due to the fact that there no population within the predicted area of interference to 2nd adjacent station K260BW, applicant respectfully requests a waiver of 2nd adjacent spacing rules with respect to that station.

The predicted signal level of K260BW's signal at the proposed transmit location is 70.4 dBu. Using the U-D ratio of 40 dB, the LPFM's interfering contour would be 110.4 dBu. That contour is predicted to extend a maximum of 169.5 m horizontally from the transmit antenna. Using vertical radiation data provided by the antenna manufacturer, the area of interference is predicted to clear the ground by at least 9.8 meters at all locations. Since there are no structures taller than 9.8 meters under the predicted area of interference (as can be verified on the attached aerial photo), there are no structures or roads within the predicted area of interference, and hence no population predicted to receive interference.

Antenna Manufacturer: SWR
Antenna Model: FM1
CORAGL: 98 m
Maximum ERP: 0.064 kW
Interfering Contour: 110.4 dBμ
Max Int. Contour Distance: 169.5 m
Min Ground Clearance: 9.8 m

Depression Angle Below Horizontal	Antenna Relative Field	ERP (watts)	Distance to Interfering Contour from Antenna (m)	Horizontal Distance of Interfering Contour from Tower (m)	Vertical Clearance of Interfering Contour above TGL (m)
5	.997	63.6	169.0	168.3	83.3
10	.986	62.2	167.1	164.6	69.0
15	.969	60.1	164.2	158.6	55.5
20	.946	57.3	160.3	150.6	43.2
25	.916	53.7	155.2	140.7	32.4
30	.879	49.4	149.0	129.0	23.5
35	.837	44.8	141.8	116.2	16.6
40	.789	39.8	133.7	102.4	12.1
45	.736	34.7	124.7	88.2	9.8
50	.679	29.5	115.1	74.0	9.9
55	.616	24.3	104.4	59.9	12.5
60	.550	19.4	93.2	46.6	17.3
65	.480	14.7	81.3	34.4	24.3
70	.408	10.7	69.1	23.6	33.0
75	.333	7.1	56.4	14.6	43.5
80	.256	4.2	43.4	7.5	55.3
85	.178	2.0	30.2	2.6	67.9
90	.100	0.6	16.9	0.0	81.1
Minimum Clearance above TGL:					9.8 m



Elevation Pattern

Scale: Linear

Systems With Reliability Inc.

Units: Field, Relative

CLIENT: *General*

Date: 11/10/03

ANTENNA TYPE: FM1/1

FREQUENCY: 98.1

PATTERN POL.: Circular

DIRECTIVITY(Peak): 0.883/ -0.539 dBd

Beam Tilt (Deg.) : 0

DIRECTIVITY(Horiz): 0.883/ -0.539 dBd

Null Fill(s)(%) : 0, 0, 0

Relative Field Tabulation

Elev. Angle	Rel. Fld(dB)	Elev. Angle	Rel. Fld(dB)	Elev. Angle	Rel. Fld(dB)
3.2	.999 (-0.012)	-4.4	.997 (-0.023)	-12.0	.98 (-0.173)
3.0	.999 (-0.011)	-4.6	.997 (-0.025)	-12.2	.98 (-0.178)
2.8	.999 (-0.009)	-4.8	.997 (-0.027)	-12.4	.979 (-0.184)
2.6	.999 (-0.008)	-5.0	.997 (-0.03)	-12.6	.978 (-0.19)
2.4	.999 (-0.007)	-5.2	.996 (-0.032)	-12.8	.978 (-0.196)
2.2	.999 (-0.006)	-5.4	.996 (-0.035)	-13.0	.977 (-0.203)
2.0	.999 (-0.005)	-5.6	.996 (-0.037)	-13.2	.976 (-0.209)
1.8	1.00 (-0.004)	-5.8	.995 (-0.04)	-13.4	.975 (-0.215)
1.6	1.00 (-0.003)	-6.0	.995 (-0.043)	-13.6	.975 (-0.222)
1.4	1.00 (-0.002)	-6.2	.995 (-0.046)	-13.8	.974 (-0.229)
1.2	1.00 (-0.002)	-6.4	.994 (-0.049)	-14.0	.973 (-0.235)
1.0	1.00 (-0.001)	-6.6	.994 (-0.052)	-14.2	.973 (-0.242)
.8	1.00 (-0.001)	-6.8	.994 (-0.055)	-14.4	.972 (-0.249)
.6	1.00 (0)	-7.0	.993 (-0.058)	-14.6	.971 (-0.256)
.4	1.00 (0)	-7.2	.993 (-0.062)	-14.8	.97 (-0.263)
.2	1.00 (0)	-7.4	.993 (-0.065)	-15.0	.969 (-0.271)
.0	1.00 (0)	-7.6	.992 (-0.069)	-15.2	.969 (-0.278)
-.2	1.00 (0)	-7.8	.992 (-0.073)	-15.4	.968 (-0.285)
-.4	1.00 (0)	-8.0	.991 (-0.076)	-15.6	.967 (-0.293)
-.6	1.00 (0)	-8.2	.991 (-0.08)	-15.8	.966 (-0.3)
-.8	1.00 (-0.001)	-8.4	.99 (-0.084)	-16.0	.965 (-0.308)
-1.0	1.00 (-0.001)	-8.6	.99 (-0.088)	-16.2	.964 (-0.316)
-1.2	1.00 (-0.002)	-8.8	.989 (-0.093)	-16.4	.963 (-0.324)
-1.4	1.00 (-0.002)	-9.0	.989 (-0.097)	-16.6	.962 (-0.332)
-1.6	1.00 (-0.003)	-9.2	.988 (-0.101)	-16.8	.962 (-0.34)
-1.8	1.00 (-0.004)	-9.4	.988 (-0.106)	-17.0	.961 (-0.348)
-2.0	.999 (-0.005)	-9.6	.987 (-0.11)	-17.2	.96 (-0.357)
-2.2	.999 (-0.006)	-9.8	.987 (-0.115)	-17.4	.959 (-0.365)
-2.4	.999 (-0.007)	-10.0	.986 (-0.12)	-17.6	.958 (-0.374)
-2.6	.999 (-0.008)	-10.2	.986 (-0.124)	-17.8	.957 (-0.383)
-2.8	.999 (-0.009)	-10.4	.985 (-0.129)	-18.0	.956 (-0.391)
-3.0	.999 (-0.011)	-10.6	.985 (-0.134)	-18.2	.955 (-0.4)
-3.2	.999 (-0.012)	-10.8	.984 (-0.14)	-18.4	.954 (-0.409)
-3.4	.998 (-0.014)	-11.0	.983 (-0.145)	-18.6	.953 (-0.418)
-3.6	.998 (-0.015)	-11.2	.983 (-0.15)	-18.8	.952 (-0.427)
-3.8	.998 (-0.017)	-11.4	.982 (-0.156)	-19.0	.951 (-0.437)
-4.0	.998 (-0.019)	-11.6	.982 (-0.161)	-19.2	.95 (-0.446)
-4.2	.998 (-0.021)	-11.8	.981 (-0.167)	-19.4	.949 (-0.456)

Systems With Reliability Inc.

Page 1 of 2

CLIENT: *General*

Date: 11/10/03

ANTENNA TYPE: FM1/1

FREQUENCY: 98.1

PATTERN POL.: Circular

DIRECTIVITY(Peak): 0.883/ -0.539 dBd

Beam Tilt (Deg.) : 0

DIRECTIVITY(Horiz): 0.883/ -0.539 dBd

Null Fill(s)(%) : 0, 0, 0

Relative Field Tabulation

Elev. Angle	Rel. Fld(dB)	Elev. Angle	Rel. Fld(dB)	Elev. Angle	Rel. Fld(dB)
-19.6	.948 (-0.465)	-27.2	.90 (-0.911)	-54.0	.629 (-4.027)
-19.8	.947 (-0.475)	-27.4	.899 (-0.924)	-55.0	.616 (-4.205)
-20.0	.946 (-0.485)	-27.6	.898 (-0.939)	-56.0	.603 (-4.39)
-20.2	.945 (-0.495)	-27.8	.896 (-0.953)	-57.0	.59 (-4.58)
-20.4	.944 (-0.505)	-28.0	.895 (-0.967)	-58.0	.577 (-4.778)
-20.6	.942 (-0.515)	-28.2	.893 (-0.981)	-59.0	.564 (-4.982)
-20.8	.941 (-0.525)	-28.4	.892 (-0.996)	-60.0	.55 (-5.193)
-21.0	.94 (-0.535)	-28.6	.89 (-1.01)	-61.0	.536 (-5.411)
-21.2	.939 (-0.546)	-28.8	.889 (-1.025)	-62.0	.523 (-5.638)
-21.4	.938 (-0.556)	-29.0	.887 (-1.04)	-63.0	.509 (-5.873)
-21.6	.937 (-0.567)	-29.2	.886 (-1.055)	-64.0	.495 (-6.116)
-21.8	.936 (-0.578)	-29.4	.884 (-1.07)	-65.0	.48 (-6.369)
-22.0	.934 (-0.589)	-29.6	.883 (-1.085)	-66.0	.466 (-6.631)
-22.2	.933 (-0.6)	-29.8	.881 (-1.101)	-67.0	.452 (-6.904)
-22.4	.932 (-0.611)	-30.0	.879 (-1.116)	-68.0	.437 (-7.187)
-22.6	.931 (-0.622)	-31.0	.871 (-1.195)	-69.0	.423 (-7.483)
-22.8	.93 (-0.633)	-32.0	.863 (-1.277)	-70.0	.408 (-7.791)
-23.0	.928 (-0.645)	-33.0	.855 (-1.363)	-71.0	.393 (-8.112)
-23.2	.927 (-0.656)	-34.0	.846 (-1.451)	-72.0	.378 (-8.448)
-23.4	.926 (-0.668)	-35.0	.837 (-1.543)	-73.0	.363 (-8.799)
-23.6	.925 (-0.68)	-36.0	.828 (-1.638)	-74.0	.348 (-9.167)
-23.8	.923 (-0.692)	-37.0	.819 (-1.737)	-75.0	.333 (-9.553)
-24.0	.922 (-0.704)	-38.0	.809 (-1.839)	-76.0	.318 (-9.959)
-24.2	.921 (-0.716)	-39.0	.799 (-1.944)	-77.0	.302 (-10.387)
-24.4	.92 (-0.728)	-40.0	.789 (-2.054)	-78.0	.287 (-10.839)
-24.6	.918 (-0.74)	-41.0	.779 (-2.167)	-79.0	.272 (-11.317)
-24.8	.917 (-0.753)	-42.0	.769 (-2.283)	-80.0	.256 (-11.826)
-25.0	.916 (-0.765)	-43.0	.758 (-2.404)	-81.0	.241 (-12.367)
-25.2	.914 (-0.778)	-44.0	.747 (-2.529)	-82.0	.225 (-12.946)
-25.4	.913 (-0.791)	-45.0	.736 (-2.658)	-83.0	.21 (-13.569)
-25.6	.912 (-0.803)	-46.0	.725 (-2.791)	-84.0	.194 (-14.241)
-25.8	.91 (-0.816)	-47.0	.714 (-2.928)	-85.0	.178 (-14.97)
-26.0	.909 (-0.83)	-48.0	.702 (-3.071)	-86.0	.163 (-15.768)
-26.2	.908 (-0.843)	-49.0	.69 (-3.217)	-87.0	.147 (-16.648)
-26.4	.906 (-0.856)	-50.0	.679 (-3.369)	-88.0	.131 (-17.627)
-26.6	.905 (-0.87)	-51.0	.666 (-3.525)	-89.0	.116 (-18.733)
-26.8	.903 (-0.883)	-52.0	.654 (-3.687)	-90.0	.10 (-20)
-27.0	.902 (-0.897)	-53.0	.642 (-3.854)	90.0	.00 (-50)

Systems With Reliability Inc.

Page 2 of 2

CLIENT: *General*

Date: 11/10/03

ANTENNA TYPE: FM1/1

FREQUENCY: 98.1

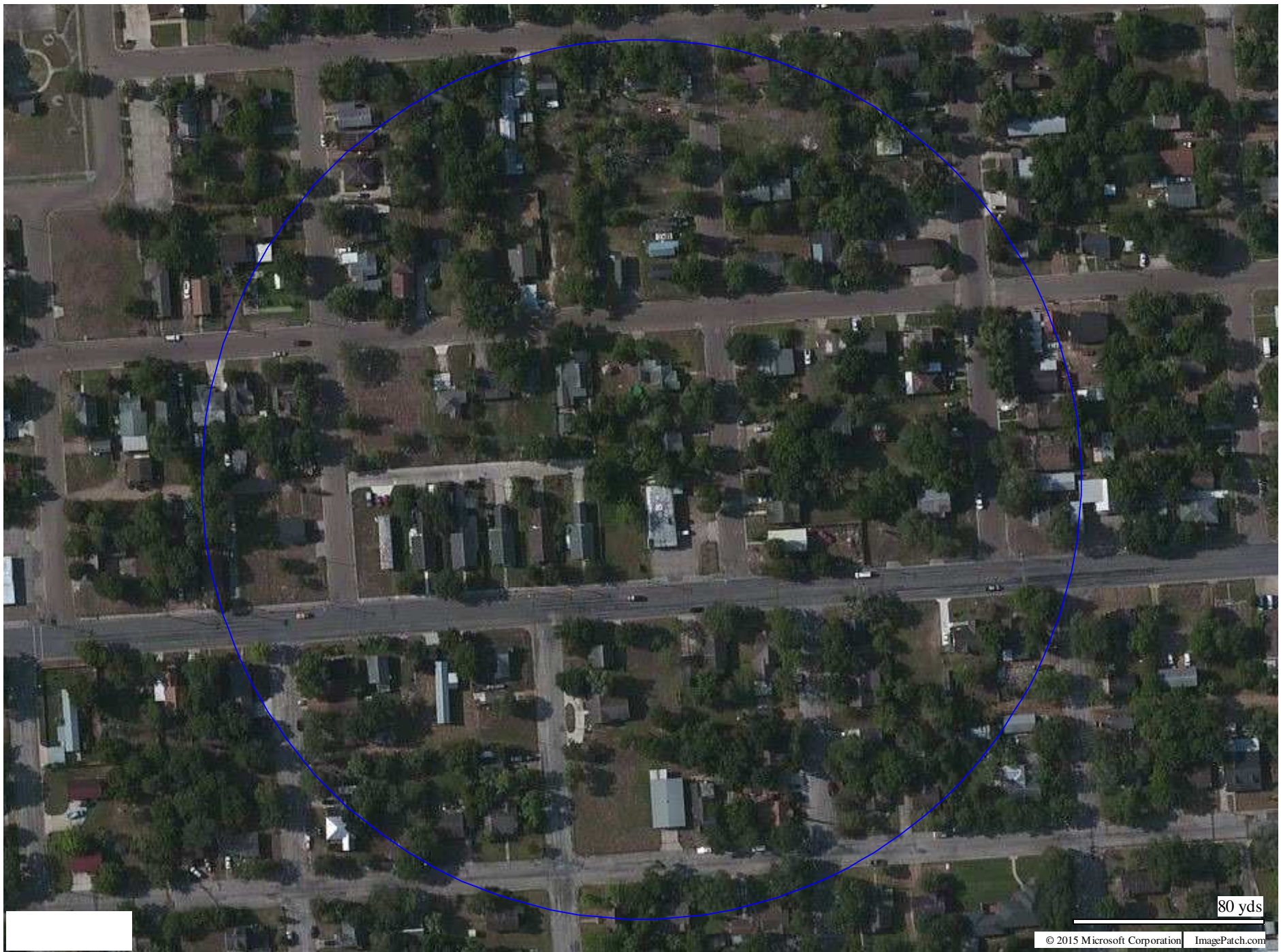
PATTERN POL.: Circular

DIRECTIVITY(Peak): 0.883/ -0.539 dBd

Beam Tilt (Deg.) : 0

DIRECTIVITY(Horiz): 0.883/ -0.539 dBd

Null Fill(s)(%) : 0, 0, 0



80 yds