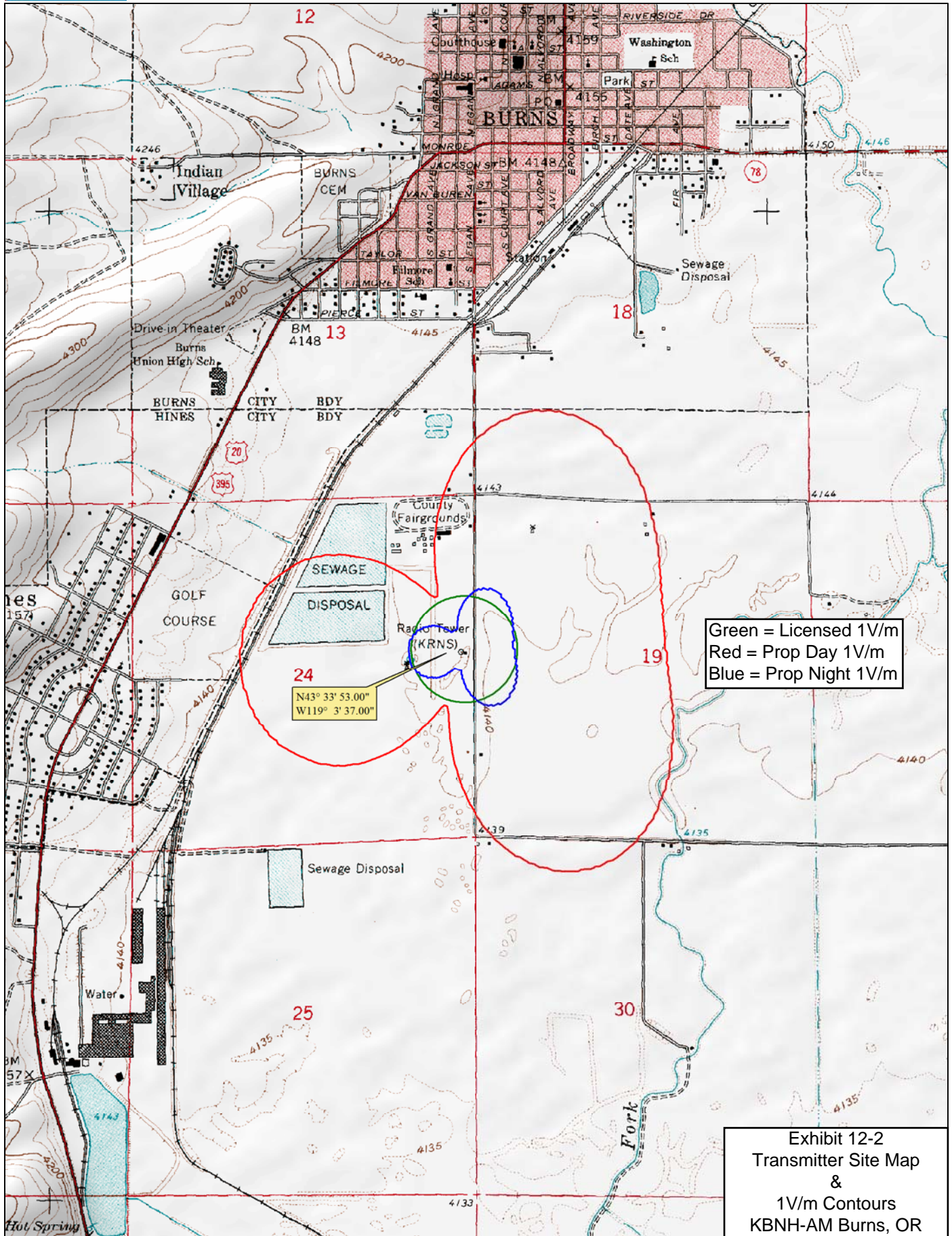


GROUND SYSTEM CONSISTS OF 120 #10 SD COPPER RADIALS SPACED EVERY THREE DEGREES ABOUT TOWER BASES 205ft IN LENGTH AND 4 in COPPER STRAP BETWEEN TOWER BASES





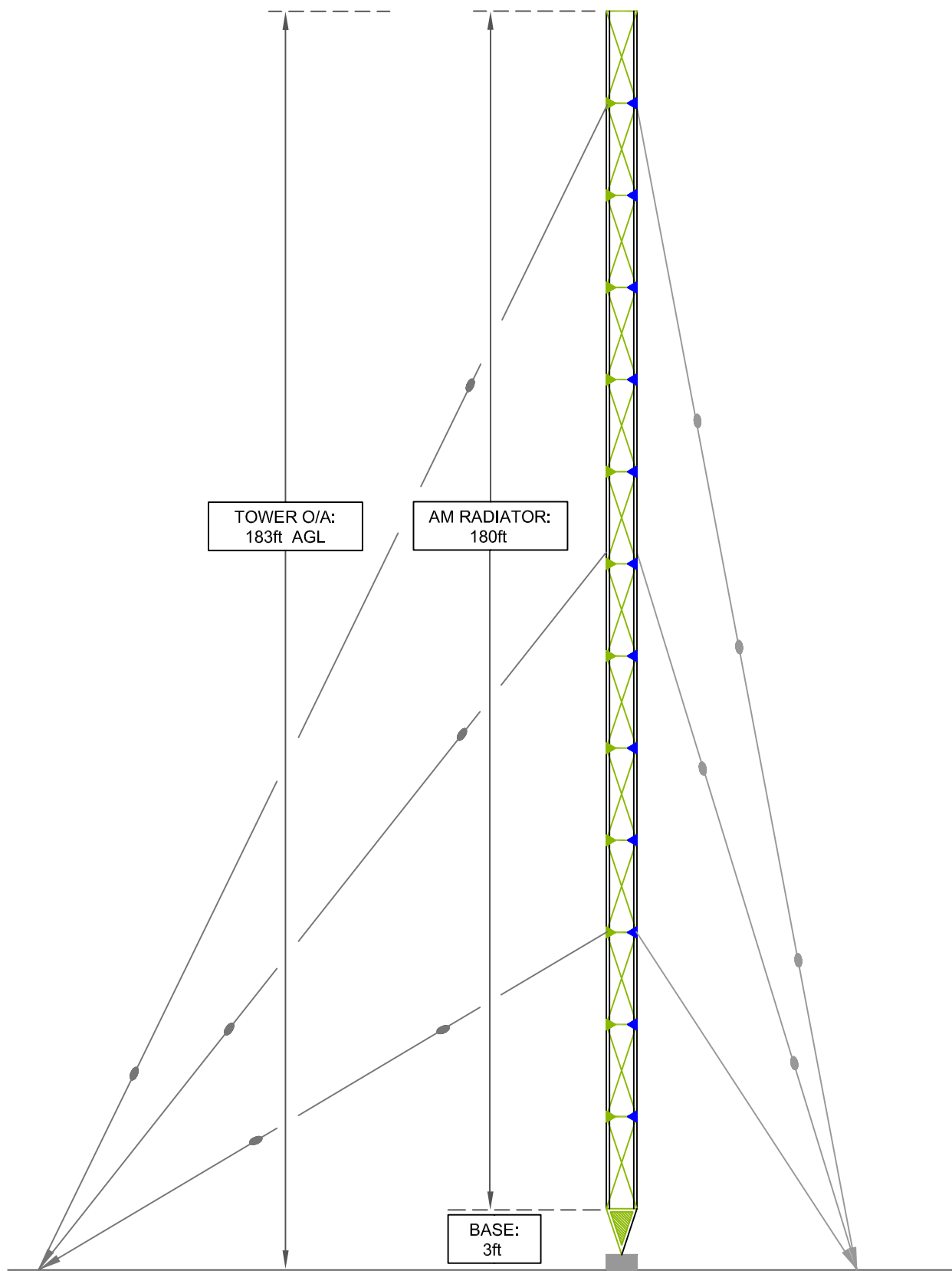
HATFIELD & DAWSON
CONSULTING ENGINEERS

EXHIBIT 12-3
TRANSMITTER SITE PHOTO

KBNH(AM) 1210 kHz

BURNS, OR

2/2011



Bob Allen, H&D

2/14/2011 4:38 PM

KBNH TOWER.dwg

Hatfield & Dawson
Consulting Engineers

EXHIBIT 12-4
VERTICAL PLAN SKETCH
KBNH(AM) 1210 kHz
BURNS, OR

2/2011