

Engineering Statement Regarding Second &/or Third Adjacent Channel Interference

This application proposes an FM translator that will, according to the FCC Rules cause interference to facilities on either or both of the second or third adjacent channels in the area immediately surrounding the proposed FMT site.

It either or both cases, the applicant will demonstrate with map diagrams and/or text descriptions that demonstrate that the interference, while predicted, will not cause actual interference.

The applicant hereby requests a waiver of section 73.1204 of the rules based on paragraph 73.1204(d) of the rules, in that the proposed area of interference is uninhabited and/or unpopulated and thus will there not cause any actual interference.

Further, the applicant hereby requests that the Commission allow the applicant to calculate and demonstrate the area of interference using the well established principles of Undesirable/Desirable signal ratio of 40 dBu, as outlined in section 73.215(2) of the rules.

In making these requests, the applicant submits that by granting them, the Commission would allow additional service that would otherwise not be permitted, and that are in conformity with the Commission's rules. The public interest would thus be served.

Channel Study Proposed 297 Loveland											
REFERENCE 40 29 36 N 105 10 52 W		CH# 297D - 107.3 MHz, Pwr= 0.01 kW, HAAT=0.0 M, COR= 2089 M Average Protected F(50-50)= 3.15 km Ave. F(50-10) 40 dBu= 10.2 54 dBu= 4.4 80 dBu= 1.6 100 dBu= .2								DISPLAY DATES DATA 07-19-03 SEARCH 08-25-03	
CH CITY	CALL	TYPE STATE	AZI. <--	DIST FILE #	LAT. LNG.	Pwr(kW) HAAT(M)	COR(M) INT(km)	PRO(km) LICENSEE	*IN* (Overlap in km)	*OUT*	
300C1 Fort Collins Coordinates updated	ALLO CO	USE CO	44.0 224.0	29.00 BLH6757	40 40 50 104 56 32	100.000 -1533	0 0.2	31.0	13.11	-2.19*<	
300C1 Fort Collins	KPAW	LIC C CO	44.0 224.0	29.00 BLH19981216KC	40 40 50 104 56 32	100.000 257	1790 0.2	68.8 Jacor Broadcasting	6.88	-40.06*<	Of Colo
300C1 Fort Collins	KPAW.A	APP ZCX CO	358.6 178.6	44.62 BPH20030602ACS	40 53 42 105 11 38	100.000 323	2170 0.1	74.1 Jacor Broadcasting	26.10	-29.62*<	Of Colo
298C Lakewood	KQKS	LIC C CO	179.1 359.1	88.56 BLH19991214ABI	39 41 45 105 09 54	100.000 352	2081 3.8	76.2 Jefferson-pilot Communi cat	-25.37<	8.52	
298C Lakewood Coordinates updated	ALLO CO	USE CO	179.1 359.1	88.56 BMLH860418KJ	39 41 45 105 09 54	100.000 -1729	0 3.8	31.0	27.46	53.77	
296D Loveland	AP296	APP DE CO	0.0 180.0	0.00 BNPFT20030312AEL	40 29 36 105 10 52	0.000 456	2078 12.2	0.0 Educational Communi cations	-8.36*<	-12.17<	
294C Denver	KBPI	LIC CN CO	183.2 3.2	84.55 BLH19851120KC	39 43 59 105 14 12	100.000 486	2316 0.0	85.9 Jacor Broadcasting	69.45	-1.33*<	Of Colo
294C Denver Coordinates updated	ALLO CO	USE CO	183.2 3.2	84.55 RM BLH851120KC	39 43 59 105 14 12	100.000 -1830	0 0.0	31.0	78.76	53.55	
294C Denver	KBPI.A	APP CY CO	183.2 3.2	84.58 BPH20030424AAP	39 43 58 105 14 08	100.000 464	2292 0.0	84.4 Jacor Broadcasting	69.66	0.10	Of Colo
294C Denver	KBPI.A	APP CY CO	183.2 3.2	84.58 BPH20030424AAP	39 43 58 105 14 08	100.000 464	2292 0.0	84.4 Jacor Broadcasting	69.66	0.10	Of Colo
296C1 Brush	KSI RFM«	LIC NHN CO	104.7 284.7	94.63 BLH19950915KB	40 16 24 104 06 16	100.000 281	1640 11.1	70.8 Kkdd-fm Broadcasters	-15.46<	12.68	
295D Masonville	AP295	APP C CO	318.1 138.1	18.56 BNPFT20030317EIK	40 37 03 105 19 40	0.003 455	2549 0.0	8.4 Mi tchel l A. Beranek	17.67	10.11	
296C Bennett	KSI RFM«	CP NCX CO	121.3 301.3	120.90 BMPH20030109AFL	39 55 22 103 58 18	92.000 642	2105 3.9	92.5 Kkdd-fm Broadcasters	-18.40<	24.50	
296C1 Brush	ALLO	USE CO	100.7 280.7	133.61	40 15 39 103 38 15	100.000 -1302	0 12.4	31.0	66.70	90.25	
296D Hudson	KSI RF1	LIC DC CO	130.0 310.0	64.20 BLFTB19991227ABB	40 07 15 104 36 13	8.721 132	1629 1.6	35.0 Kkdd-fm Broadcasters	10.31	27.60	
300D Bergen Park	AP300	APP DC CO	180.8 0.8	57.90 BNPFT20030310AAD	39 58 19 105 11 25	0.000 1727	3310 0.0	0.0 Timothy C. Cutforth	55.61	57.88	
297C3 Albin	KKAW	LIC NC WY	39.3 219.3	144.23 BLH20001201ABA	41 29 31 104 05 07	9.300 80	1719 45.8	28.1 Tsb l i , Inc	41.32	70.31	
296C Brush	ALLO	USE CO	113.5 293.5	159.77	39 54 34 103 27 58	100.000 -1384	0 7.4	31.0	96.44	121.41	
296C Brush	ALLO	USE CO	113.5 293.5	159.77	39 54 34 103 27 58	100.000 -1384	0 7.4	31.0	96.44	121.41	
295D Buford	AP295	APP C WY	358.6 178.6	64.98 BNPFT20030317LVW	41 04 42 105 11 59	0.034 226	2388 0.1	11.9 Mary Medi cus	56.54	52.96	
297C3 Albin	ALLO	USE WY	38.0 218.0	152.15	41 34 00 104 03 24	25.000 -1570	0 45.7	22.7	39.72	83.78	
296D Cheyenne	AP296	APP C WY	29.8 209.8	82.12 BNPFT20030317LMI	41 08 00 104 41 37	0.250 -5	1865 18.8	7.1 Mi tchel l A. Beranek	59.73	56.26	
298D Laramie	K298AE	LIC DC WY	345.0 165.0	85.08 BLFT20010717AAR	41 13 58 105 26 42	0.003 205	2724 5.5	6.0 Western Inspirational Broa	72.55	73.56	
296D Laramie TRANSLATOR FOR KVOD, DENVER, CO.	K296B0	LIC CN WY	344.1 164.1	86.03 BLFT19810724IA	41 14 16 105 27 48	0.080 139	2661 5.4	11.4 Laramie Plains Ant. Tv Ass	65.69	69.20	

Page # 2

CH CITY	CALL	TYPE STATE	AZI. <--	DIST FILE #	LAT. LNG.	Pwr(kW) HAAT(M)	COR(M) INT(km)	PRO(km) LICENSEE	*IN* (Overlap in km)	*OUT*
297C2 Hayden	ALLO	USE CO	271.7 91.7	179.30	40 31 16 107 17 46	50.000 -2038	0 3.0	26.5	62.66	149.80
From channel 297A per one-step application										
297C2 Hayden	KRMR	LIC C CO	271.7 91.7	179.30	40 31 16 107 17 46	29.000 214	2252 3.0	53.6 Salisbury Broadcasting Col	44.13	122.71

***Affixed to 'IN' or 'Out' values = site inside protected contour.
ERP and HAAT are on direct line to and from reference station.
"«" = Station meets FCC minimum distance spacing for its class. "<" = Contour Overlap

Terrain and Contour Study

N. Lat. = 40 29 36 W. Lng. = 105 10 52

HAAT and Distance to Contour - FCC Method - 03 Arc. Sec.

Azi.	AV EL	HAAT	ERP kW	dBk	Field	60-F5	54-F1	100-F1
000	1735.6	353.4	0.0043	-23.65	0.657	8.64	12.56	0.15
030	1585.4	503.6	0.0091	-20.40	0.955	12.28	18.83	0.21
060	1552.0	537.0	0.0089	-20.50	0.944	12.48	19.33	0.21
090	1533.7	555.3	0.0039	-24.04	0.628	9.79	15.23	0.14
120	1562.2	526.8	0.0001	-39.85	0.102	2.16	4.01	0.02
150	1586.0	503.0	0.0000	-49.12	0.035	0.78	1.55	0.01
180	1621.6	467.4	0.0001	-39.08	0.111	2.33	4.30	0.02
210	1803.5	285.5	0.0006	-32.27	0.244	4.04	6.52	0.05
240	1963.2	125.8	0.0006	-32.38	0.240	2.97	4.42	0.05
270	2144.5	-55.5	0.0001	-40.37	0.096	1.61	1.61	0.02
300	1917.7	171.3	0.0000	-49.37	0.034	0.75	1.50	0.01
330	1878.6	210.4	0.0002	-37.71	0.130	2.39	3.86	0.03

Ave El= 1740.34 M HAAT= 348.66 M AMSL= 2089

Channel Study
Proposed 297 Level and vs KQKS

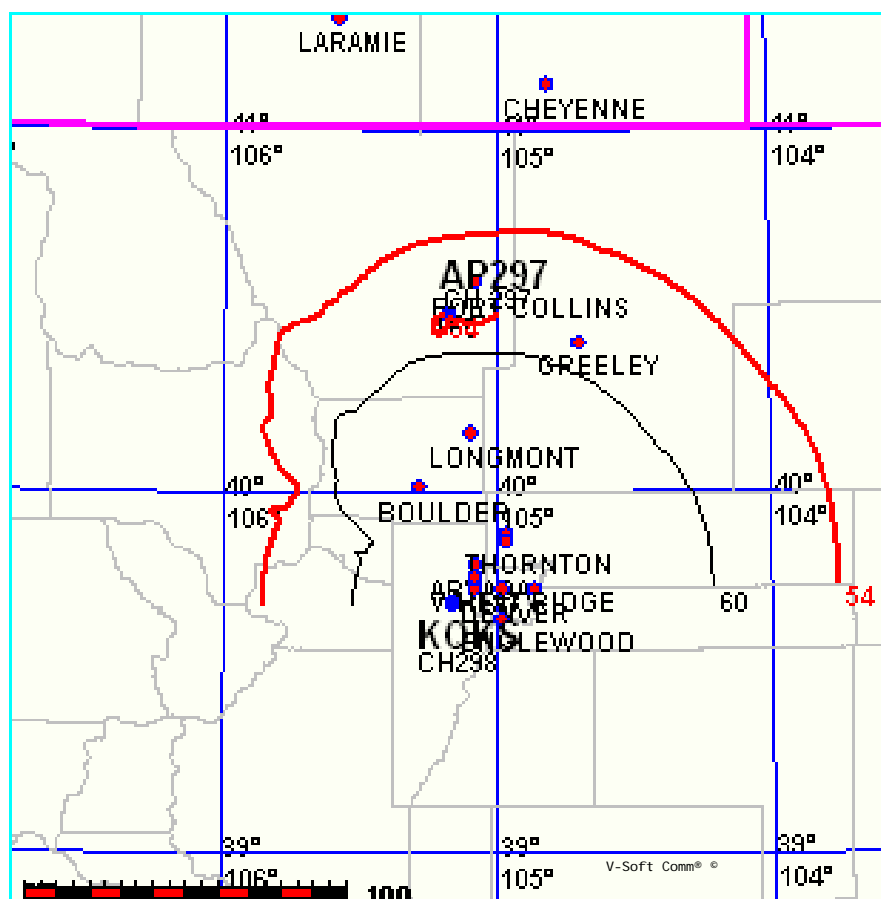
FMCONT Allocation Study

08-25-2003

AP297 CH 297 D
.01 kW 2089M COR DA
Prot. = 60 dBu
Intef. = 54 dBu

KQKS CH 298 C
100kW, 2081 M COR
Prot. = 60 dBu
Intef. = 54 dBu
File # BLH19991214ABI

1: 2, 500, 000



Channel Study
Proposed 297 Level and vs KSIR

FMCONT Allocation Study

08-25-2003

AP297 CH 297 D
.01 kW 2089M COR DA
Prot. = 60 dBu
Intef. = 54 dBu

KSIRFM CH 296 C1
100kW, 1640 M COR
Prot. = 60 dBu
Intef. = 54 dBu
File # BLH19950915KB

1: 1,650,000

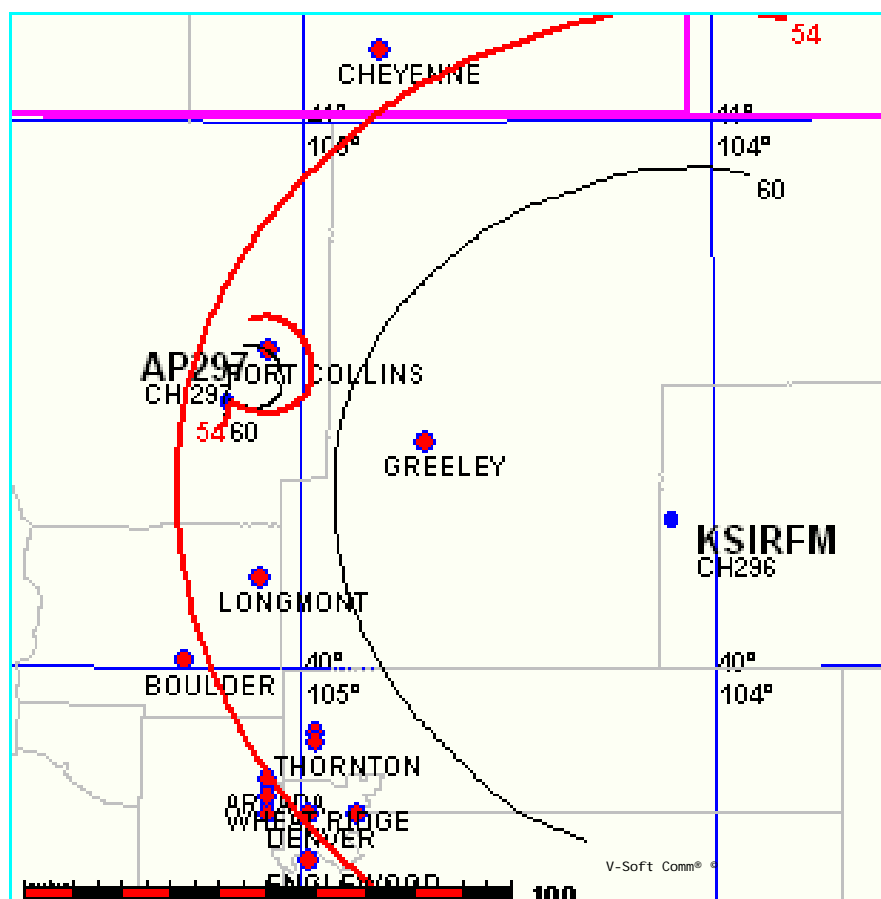


EXHIBIT 12b

Demonstration of No Population in 100 dBu Interference Contour

