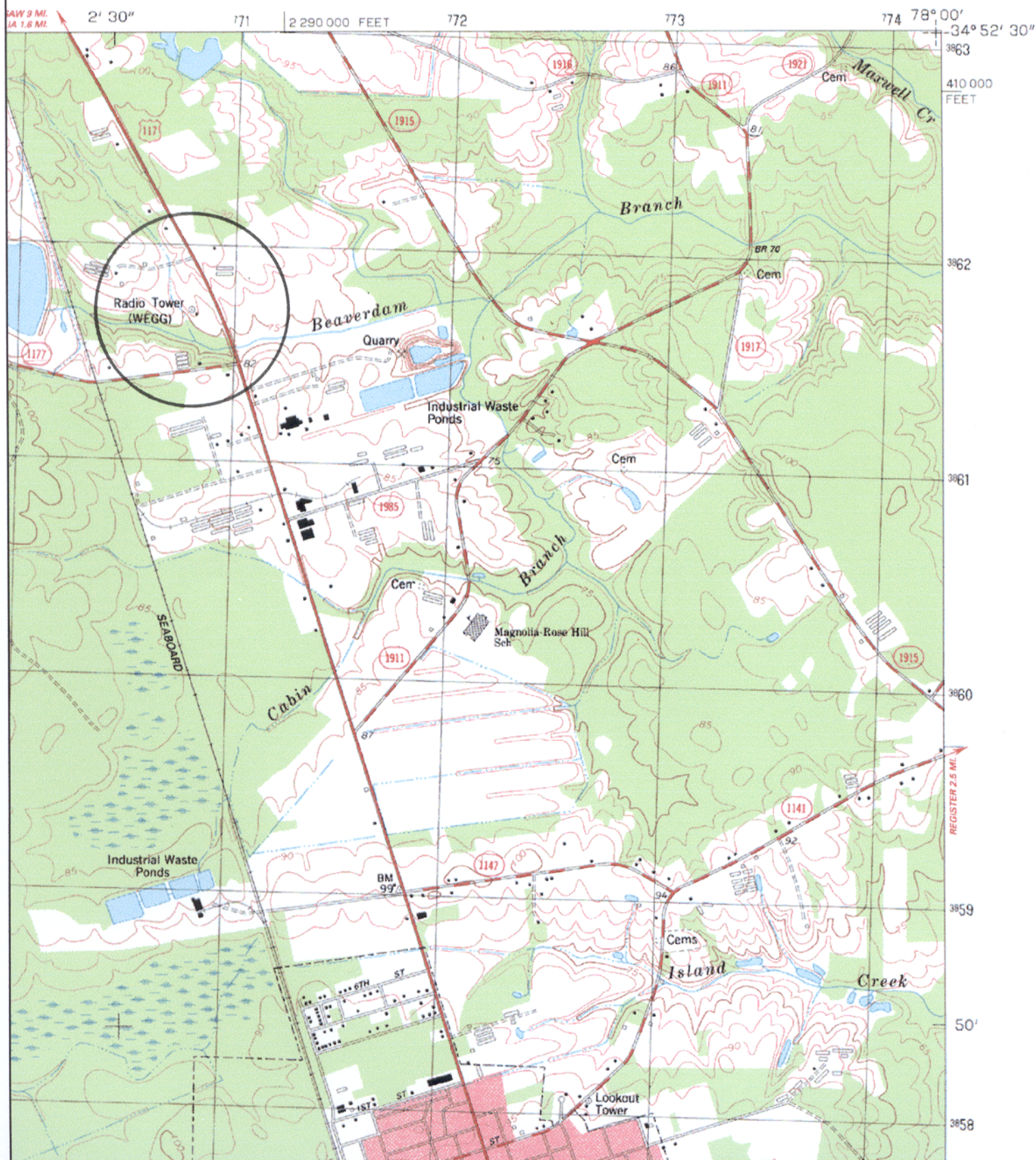


ROSE HILL QUADRANGLE  
NORTH CAROLINA - DUPLIN CO.  
7.5 MINUTE SERIES (TOPOGRAPHIC)  
SE/4 ROSE HILL 15' QUADRANGLE

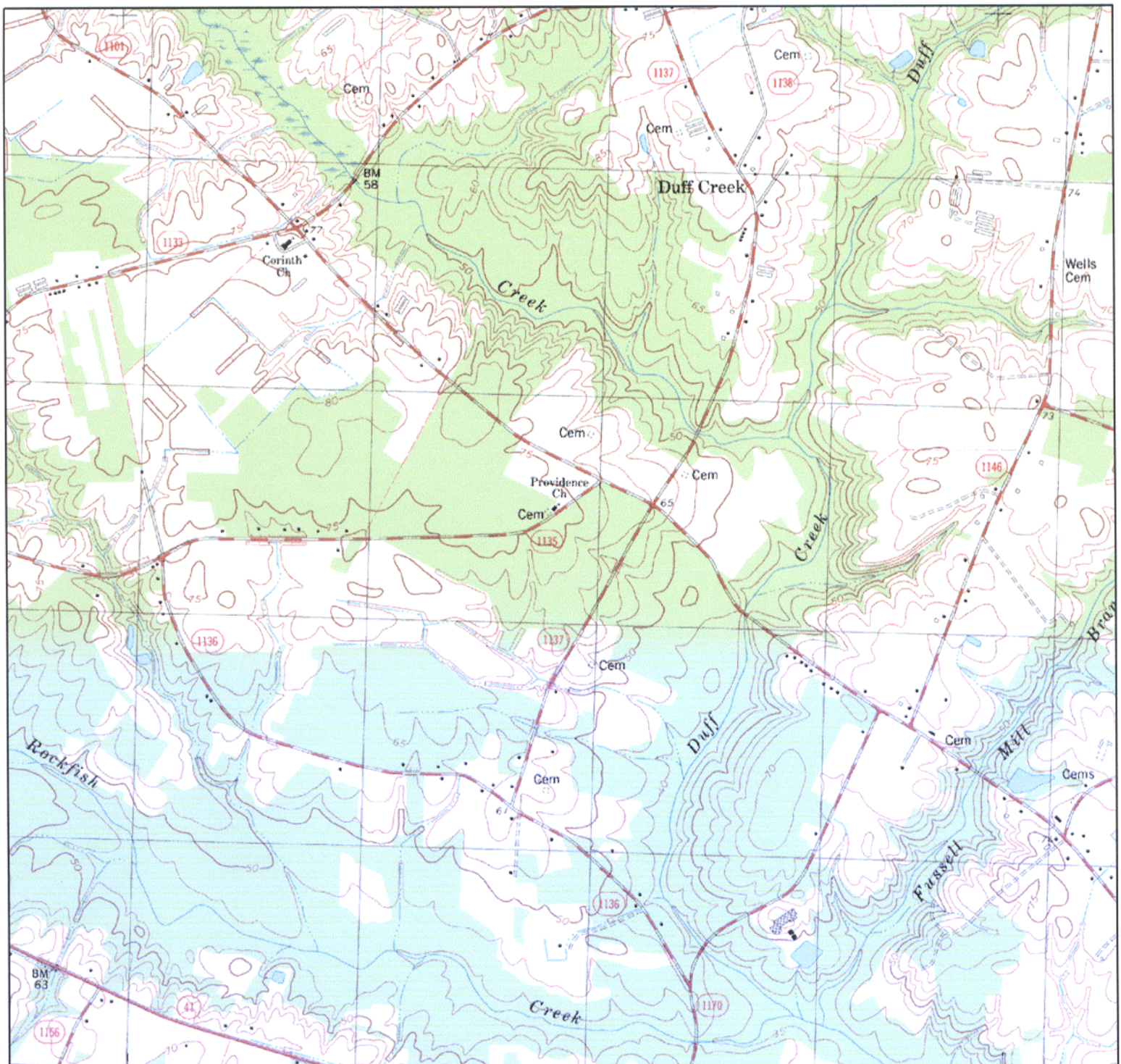
5453' N MW  
(KENANSVILLE)



Name: ROSE HILL  
Date: 1/10/2004  
Scale: 1 inch equals 2000 feet

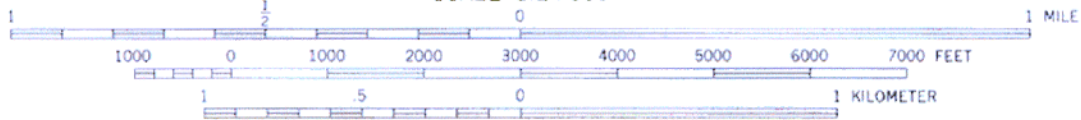
Location: 034° 51' 12.6" N 078° 01' 14.5" W  
Caption: WEGG TOWER SYMBOL PRINTED ON MAP BY USGS AT N  
34-51-48; W 78-02-16.  
PROP. 1 VOLT CONTOUR





5' (WALLACE WEST) 5353 II NE 770 2' 30" 771

SCALE 1:24 000



CONTOUR INTERVAL 5 FEET  
NATIONAL GEODETIC VERTICAL DATUM OF 1929

METRIC NORTH  
OF SHEET

Name: ROSE HILL  
Date: 1/10/2004  
Scale: 1 inch equals 2000 feet

Location: 034° 45' 57.3" N 078° 03' 45.2" W  
Caption: ROSE HILL MAP WITH DISTANCE SCALE