

## Exhibit 12.2

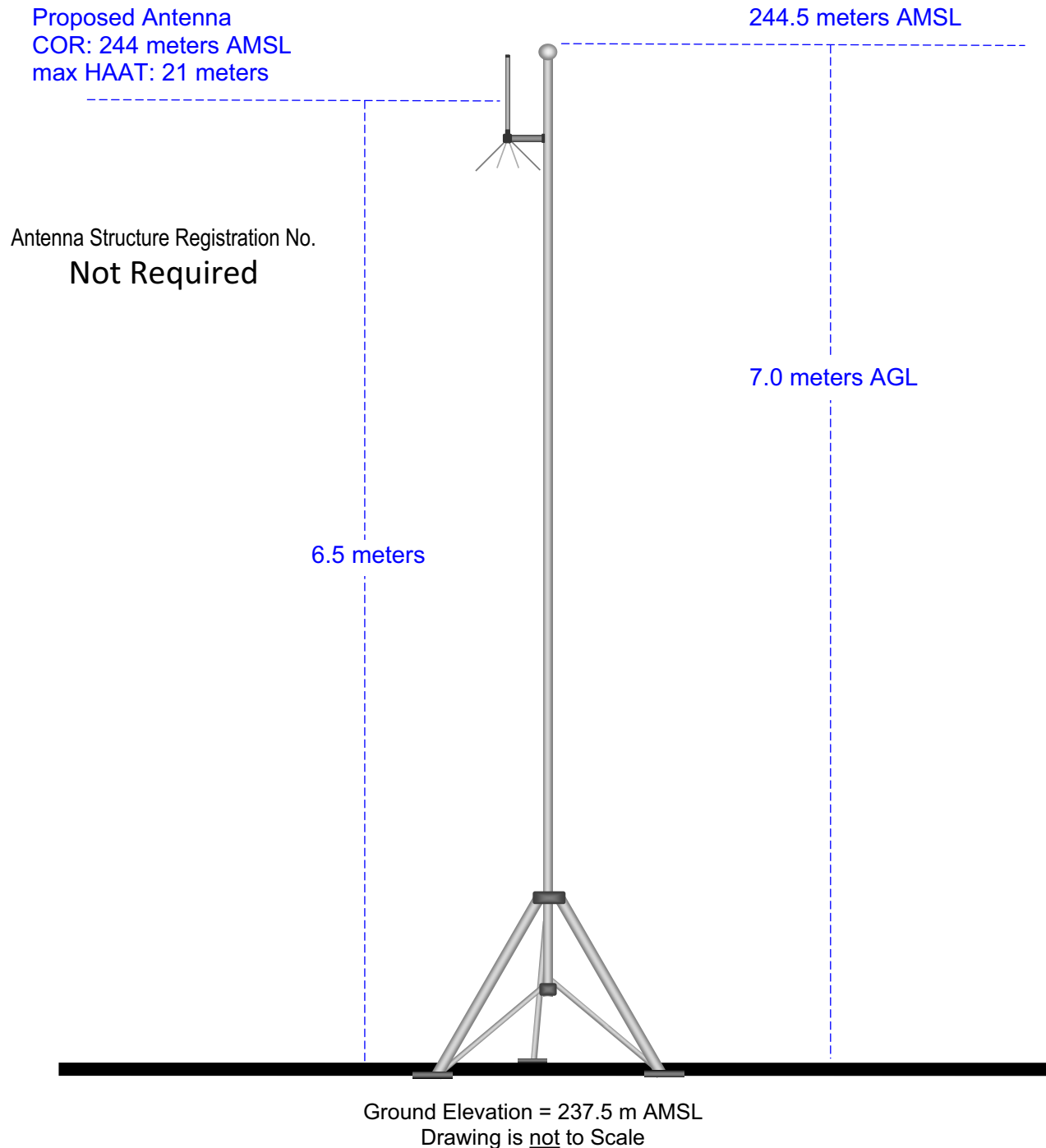
### Vertical Plan of Antenna System

The site is located 0.6 km west of the “T” intersection of E 500 North Road and North 2825 East Road, the city of Le Roy, McLean County, Illinois.

Site Location (NAD 27)

NL: 40° 21' 18"

WL: 88° 43' 42"



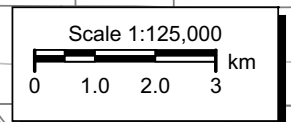
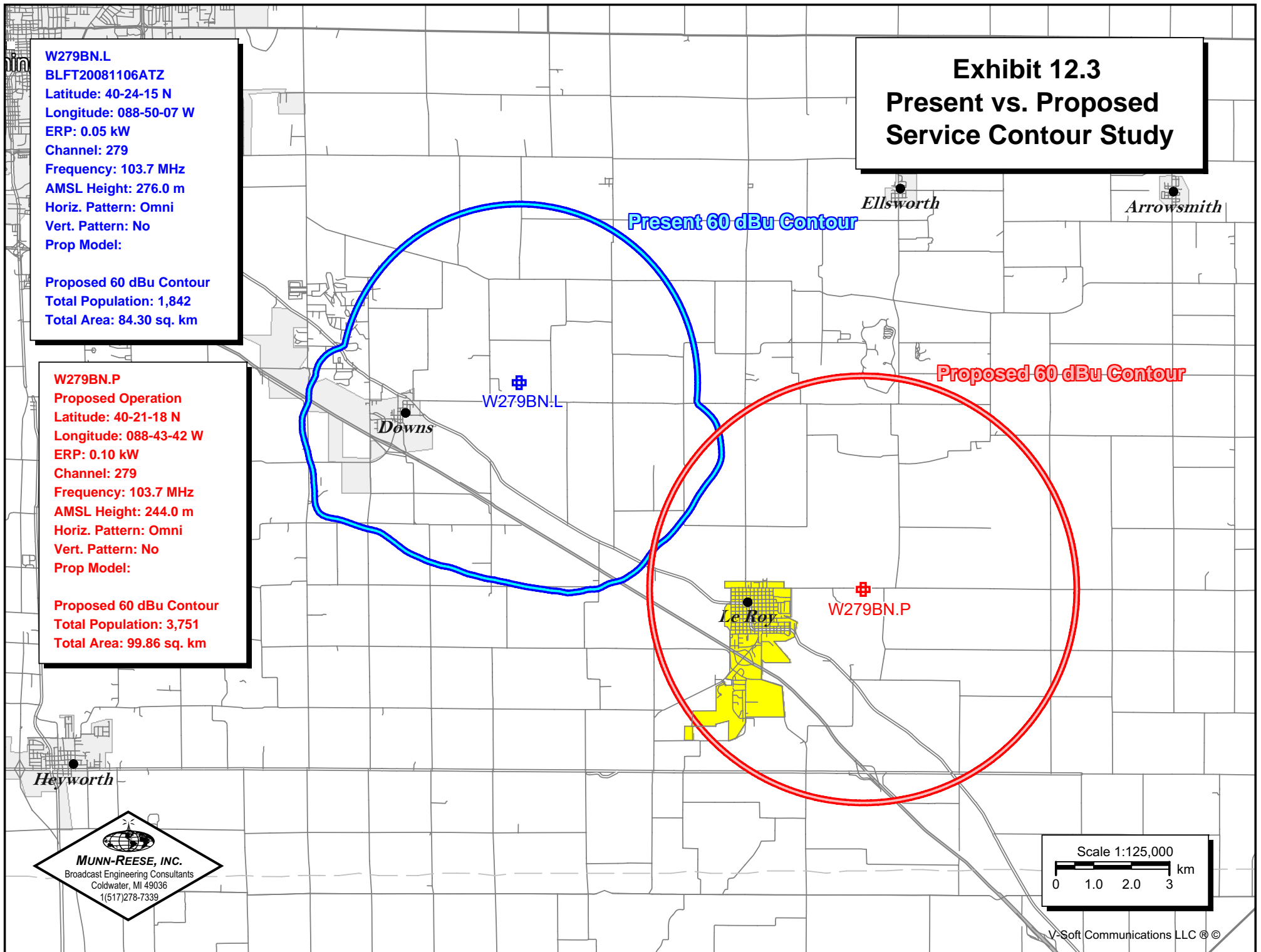
W279BN.L  
BLFT20081106ATZ  
Latitude: 40-24-15 N  
Longitude: 088-50-07 W  
ERP: 0.05 kW  
Channel: 279  
Frequency: 103.7 MHz  
AMSL Height: 276.0 m  
Horiz. Pattern: Omni  
Vert. Pattern: No  
Prop Model:

Proposed 60 dBu Contour  
Total Population: 1,842  
Total Area: 84.30 sq. km

W279BN.P  
Proposed Operation  
Latitude: 40-21-18 N  
Longitude: 088-43-42 W  
ERP: 0.10 kW  
Channel: 279  
Frequency: 103.7 MHz  
AMSL Height: 244.0 m  
Horiz. Pattern: Omni  
Vert. Pattern: No  
Prop Model:

Proposed 60 dBu Contour  
Total Population: 3,751  
Total Area: 99.86 sq. km

## Exhibit 12.3 Present vs. Proposed Service Contour Study



## Exhibit 12.4 Proposed vs. Primary Service Contour Study

**WCIC.L**  
BLED19981116KA  
Latitude: 40-33-28 N  
Longitude: 089-34-04 W  
ERP: 47.00 kW  
Channel: 218  
Frequency: 91.5 MHz  
AMSL Height: 339.0 m  
Horiz. Pattern: Directional  
Vert. Pattern: No  
Prop Model:

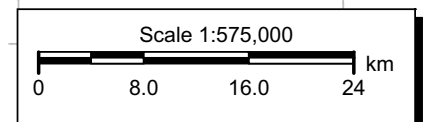
**W279BN.P**  
Proposed Operation  
Latitude: 40-21-18 N  
Longitude: 088-43-42 W  
ERP: 0.10 kW  
Channel: 279  
Frequency: 103.7 MHz  
AMSL Height: 244.0 m  
Horiz. Pattern: Omni  
Vert. Pattern: No  
Prop Model:

WCIC.L



Proposed 60 dBu Contour

Primary 60 dBu Contour





# Exhibit 12.5

## Tabulation of Proposed Allocation

Radio Assist Ministry, Inc.

| REFERENCE            |         | CH# 279D - 103.7 MHz, Pwr= 0.1 kW, HAAT= 5.4 M, COR= 244 M |     |       |                  |            |         |         |                            | DISPLAY DATES   |         |
|----------------------|---------|--|-----|-------|------------------|------------|---------|---------|----------------------------|-----------------|---------|
| 40 21 18.0 N.        |         | Average Protected F(50-50)= 5.64 km                        |     |       |                  |            |         |         |                            | DATA 06-20-09   |         |
| 88 43 42.0 W.        |         | Omni-directional   |     |       |                  |            |         |         |                            | SEARCH 06-25-09 |         |
| CH                   | CALL    | TYPE   | ANT | AZI   | DIST             | LAT        | PWR(kW) | INT(km) | PRO(km)                    | *IN*            | *OUT*   |
| CITY                 |         | STATE  |     | <--   | FILE #           | LNG        | HAAT(M) | COR(M)  | LICENSEE                   | (Overlap in km) |         |
| 279D                 | W279BN  | LIC _V_  |     | 301.1 | 10.6             | 40 24 15.0 | 0.050   | 18.4    | 5.6                        | -13.5*          | -13.6   |
| Le Roy               |         | IL   |     | 121.1 | BLFT20081106ATZ  | 88 50 07.0 |         | 276     | Radio Assist Ministry, Inc |                 |         |
| 281B                 | WBWN    | CP NCX   |     | 301.9 | 14.6             | 40 25 26.0 | 47.000  | 4.9     | 57.4                       | 4.0             | -44.2*< |
| Le Roy               |         | IL   |     | 121.8 | BPH20071119AFD   | 88 52 27.0 | 100     | 344     | Regent Broadcasting Of Blo |                 |         |
| One Step Application |         |  |     |       |                  |            |         |         |                            |                 |         |
| 279B                 | WDBR    | LIC _CX  |     | 230.4 | 97.4             | 39 47 37.0 | 50.000  | 130.5   | 56.9                       | -38.8*<         | 13.6    |
| Springfield          |         | IL   |     | 49.8  | BMLH20061002BFX  | 89 36 18.0 | 91      | 268     | Saga Communications Of Ill |                 |         |
| 281B1                | WBWN    | LIC _CN  |     | 301.7 | 14.6             | 40 25 25.0 | 25.000  | 4.2     | 45.5                       | 4.8             | -32.0*< |
| Le Roy               |         | IL   |     | 121.6 | BLH19900828KC    | 88 52 28.0 | 100     | 344     | Regent Broadcasting Of Blo |                 |         |
| 279A                 | WFAV    | LIC _CX  |     | 60.9  | 83.9             | 40 43 04.0 | 3.200   | 82.6    | 27.9                       | -4.3<           | 37.4    |
| Gilman               |         | IL   |     | 241.5 | BLH20071026ACV   | 87 51 36.0 | 138     | 334     | Milner Broadcasting Enterp |                 |         |
| 225A                 | WRPW    | LIC _C_  |     | 2.5   | 15.1             | 40 29 28.0 | 6.000   | 0.0     | 0.0                        | 9.5R            | 5.6M    |
| Colfax               |         | IL   |     | 182.5 | BLH19980210KC    | 88 43 14.0 | 100     | 345     | Pilot Media, LLC           |                 |         |
| 279C                 | WLLR-FM | LIC _CY  |     | 312.6 | 198.0            | 41 32 49.0 | 100.000 | 181.3   | 78.4                       | 11.0            | 101.0   |
| Davenport            |         | IA   |     | 131.5 | BLH19821112AR    | 90 28 35.0 | 363     | 564     | Citicasters Licenses, Inc. |                 |         |
| 277A                 | WKZS    | RSV ____   |     | 112.9 | 44.2             | 40 11 58.0 | 6.000   | 2.7     | 28.3                       | 35.8            | 15.3    |
| Thomasboro           |         | IL   |     | 293.2 |                  | 88 14 59.0 | 100     | 321     | Benton-weatherford Broadca |                 |         |
| One Step Application |         |  |     |       |                  |            |         |         |                            |                 |         |
| 277A                 | WKZS    | APP ZCX  |     | 113.1 | 56.7             | 40 09 12.0 | 5.200   | 2.6     | 27.2                       | 48.5            | 28.9    |
| Thomasboro           |         | IL   |     | 293.5 | BPH20080108ABK   | 88 06 56.0 | 107     | 321     | Benton-weatherford Broadca |                 |         |
| One Step Application |         |  |     |       |                  |            |         |         |                            |                 |         |
| 280D                 | W280DE  | LIC _C_  |     | 124.8 | 50.1             | 40 05 50.0 | 0.120   | 8.7     | 6.1                        | 35.7            | 36.0    |
| Champaign            |         | IL   |     | 305.1 | BLFT20060323ABN  | 88 14 45.0 |         | 254     | Good News Radio, Inc.      |                 |         |
| 226A                 | WYDS    | LIC ZC_  |     | 199.6 | 67.0             | 39 47 11.0 | 4.600   | 0.0     | 0.0                        | 9.5R            | 57.5M   |
| Decatur              |         | IL   |     | 19.4  | BMLH20020503AAQ  | 88 59 29.0 | 112     | 311     | Wejt, Inc.                 |                 |         |
| 277D                 | W277BZ  | LIC _V_  |     | 293.5 | 68.9             | 40 35 58.0 | 0.010   | 0.2     | 3.2                        | 63.1            | 65.1    |
| Morton               |         | IL   |     | 113.0 | BLFT20080919ACF  | 89 28 32.0 |         | 219     | Radio Assist Ministry, Inc |                 |         |
| 280D                 | 644749  | APP _C_  |     | 287.0 | 81.6             | 40 33 55.0 | 0.080   | 7.5     | 5.3                        | 68.4            | 68.3    |
| Pekin                |         | IL   |     | 106.4 | BNPFT20030317AOE | 89 39 00.0 |         | 170     | Covenant Network           |                 |         |

Terrain database is NGDC 30 SEC , R= 73.215 qualifying spacings or FCC minimum Spacings in KM, M= Margin in KM  
 Contour distances are on direct line to and from reference station. Reference zone = 1, Co to 3rd adjacent.  
 Ant Column: (D= DA Standard, Z= DA 73.215, N= Not DA 73.215, \_= Omni), Polarization (C,H,V,E), Beamtilt(Y,N,X)  
 "\*"affixed to 'IN' or 'OUT' values = site inside protected contour.

Denotes a §74.1204(d) Waiver Request for given second adjacent channel interference to WBWN.C - Le Roy, IL, CH281B and WBWN.L - Le Roy, IL, CH281B1. Full protection will be afforded both facilities as the calculated interference area has been shown to be void of population, houses, buildings and major roads as noted in **Exhibit 12.1**.