

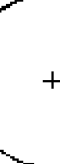
TV6 Calculation for Baptist Village, MA

TV6 Call sign: WEDY Fcc Search: 18.7 dBu

City: New Haven State: CT

COR AMSL (m): 132 HAAT(m): 88

Latitude: 411942 Longitude: 725425


 TV ERP (kW): 0.400
 FM Horizontal ERP: 0.033

☒ Outside City Of 50k
 TV
FM

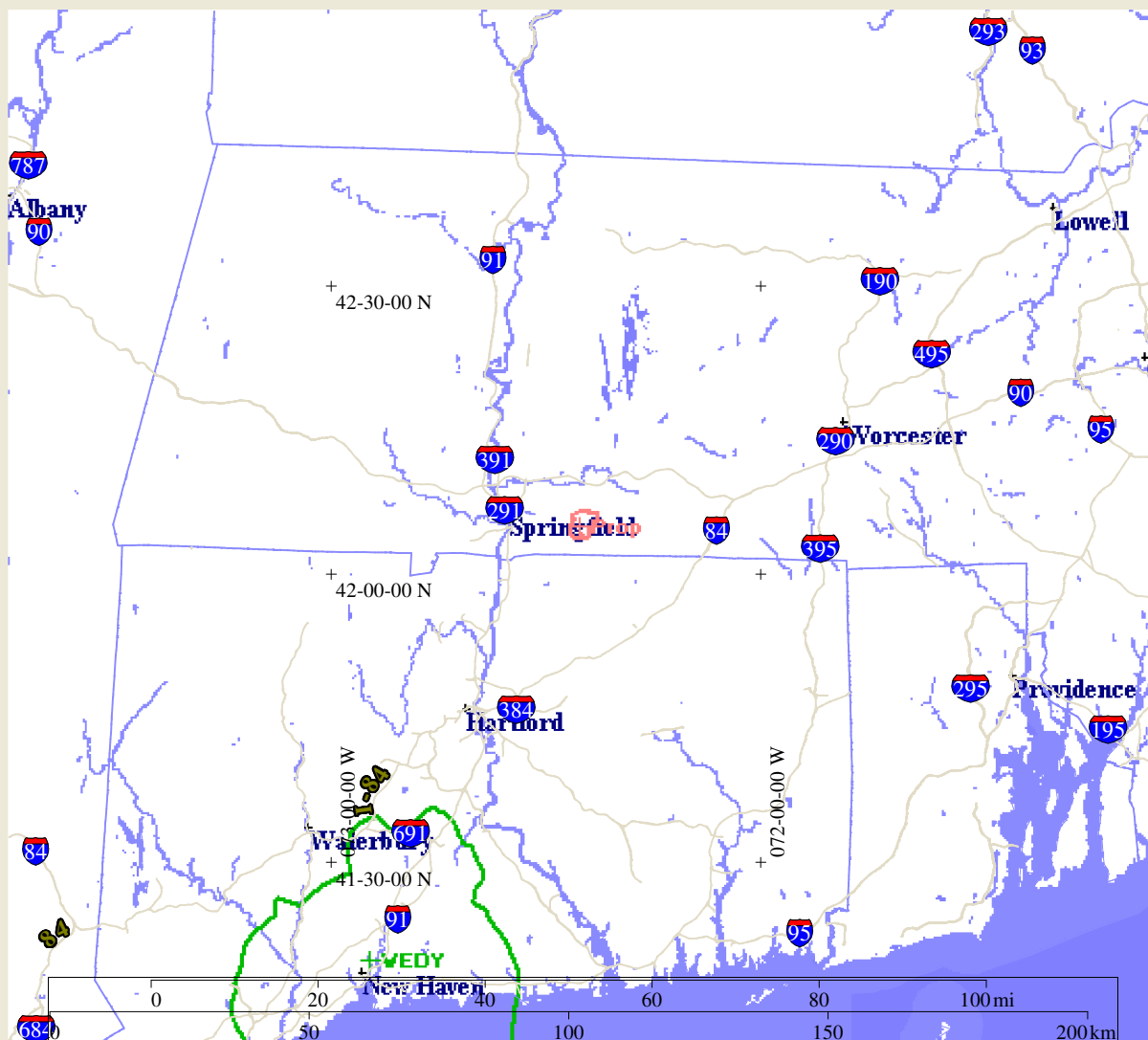
47 47 1

Plot Scale: 250 ☒ DLG ☐ AJPI

☒ Hide Zeros ☒ TIGER

☐ Plot All Centroids
☒ Plot Inside Centroid Counts
☐ Plot All Centroid Counts
☒ Plot Contours
☐ Print All Centroids to: -3 dBu
☐ Print Centroids
☒ Print TV Contour Table

Comp Copy F PrintText Print Form



Channel Six TV Protection Study

WEDY	06	0.400kW	ERP	132.0M	COR	AMSL	88.0M	HAA	T	Lat.	411942	Lon.	725425
Prop	208	0.033kW	ERP	259.0M	COR	AMSL	117.5M	HAA	T	Lat.	420500	Lon.	722459

```
Distance from TV to FM 93.2669km  Azi 206.0degr  Rev Azi 26.0 degr
Cutoff radius for channel 208 is 196 km
```

The FM horizontal polarization component is 0.033 kW,
and the area of just perceptible interference does not intersect a city of 50k,
so the effective ERP is $(P_v/40+P_h)$ 0.0338kW

The TV6 signal strength at the FM transmit site is 18.672 dBu
For F centroids (centroids where the TV6 signal strength is less than 68 dBu and
which are also +/-70 degrees from line from the FM station to the TV station)
a 6 dB bonus is added to the allowable FM signal.

TV Contour	Undesired/Desired Ratio	Total	Directional	Total
47	20.4	67.3	73.3	

Population in affected area	0
-----------------------------	---

2000 Block Centroids used