

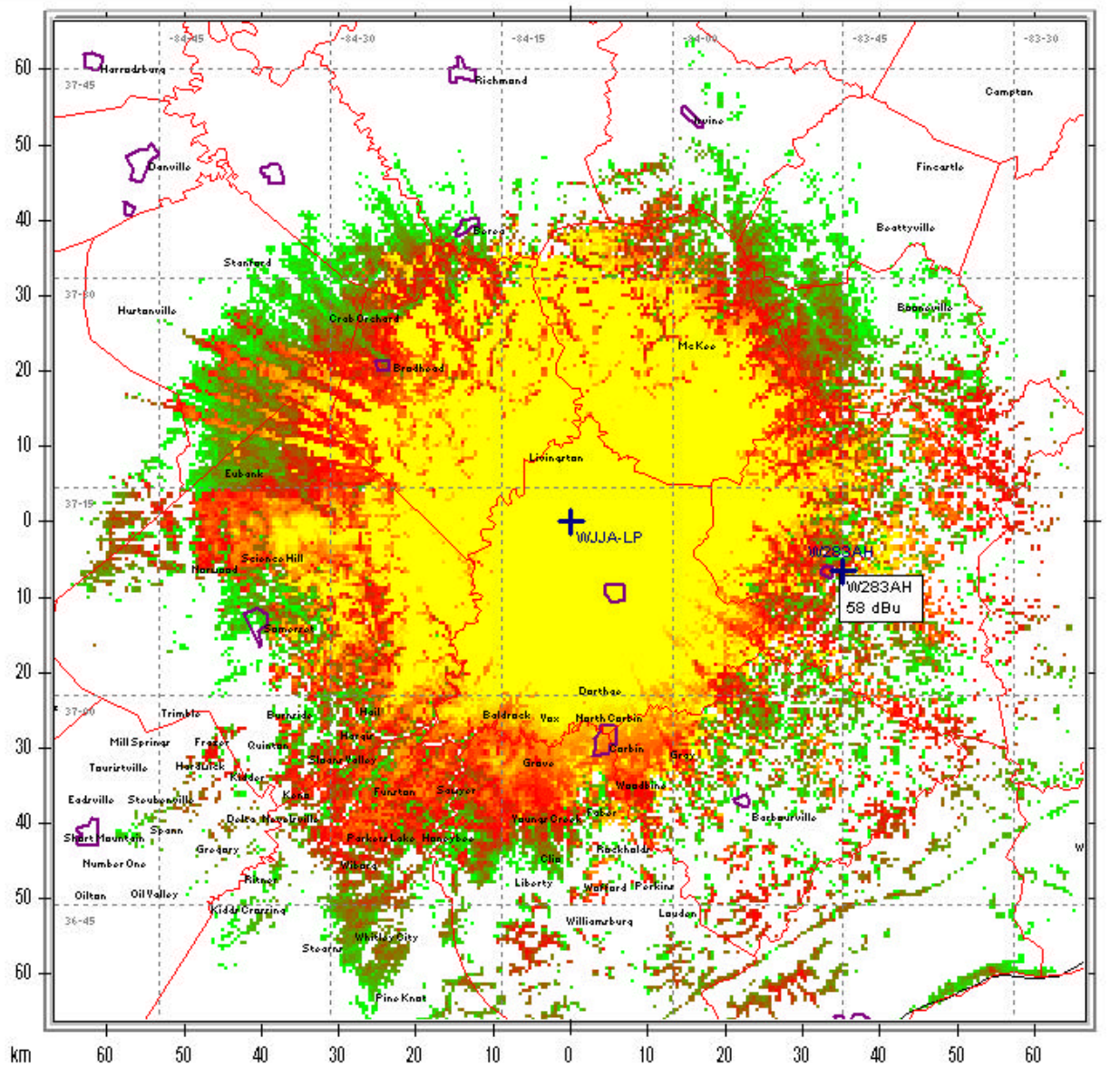
Special Operating Conditions or Restrictions For W283AH Manchester, KY

1. Filed

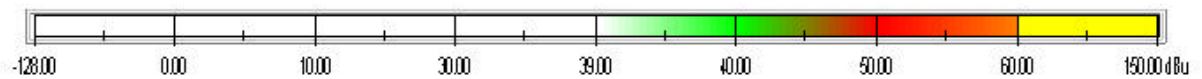
2. The permittee / licensee will reduce power or cease operation as necessary to protect persons having access to the site, tower or antenna from radio frequency electromagnetic fields in excess of FCC guidelines.

3. Please see attached Longley-Rice study which shows a 58 dBu signal at 85m above ground, more than enough to receive the signal of the primary station.

Therefore W283AH meets all Special Conditions and Restrictions



R & L Media Systems *135 N Country Club Drive *Hendersonville, TN 37075



County Borders State Borders City Borders Lat/Lon Grid

Map Scale: 1:821462 1 cm = 8.21 km V/H Size: 132.68 x 133.31 km