

Doug Vernier, Telecommunications Consultants  
401 Main St., Ste 213, Cedar Falls, IA 50613

Contour-to-Contour Allocations Study  
Town Of Monroe, Connecticut

REFERENCE CH# 208A - 89.5 MHz, Pwr= 0.225 kW DA, HAAT= 230.8 M, COR= 473 M DISPLAY DATES  
40 51 33.8 N. Average Protected F(50-50)= 19.37 km DATA 11-29-16  
75 18 04.4 W. Standard Directional SEARCH 11-29-16

CH CITY	CALL	TYPE ANT STATE	AZI ---	DIST FILE #	LAT LNG	PWR(kw) HAAT(M)	INT(km) COR(M)	PRO(km) LICENSEE	*IN* (Overlap in km)	*OUT* in km)
208A WWPJ Pen Argyl	CP DCX PA	49.8 229.9	4.34 BPED20131028ANS	40 53 04.6 75 15 42.1	0.500 324	55.5 547	17.3 Mercer County Community Co	-60.9*	-45.4*	
208A WWPJ Pen Argyl	LIC DEX PA	50.8 230.8	4.26 BLED20011113ACH	40 53 01.0 75 15 43.0	0.100 333	54.3 557	16.8 Mercer County Community Co	-60.0*	-46.3*	
208A WWPJ Pen Argyl	APP _VX PA	49.8 229.9	4.34 BESTA20140917AAN	40 53 04.6 75 15 42.1	0.030 324	42.7 547	12.8 Mercer County Community Co	-48.0*	-40.9*	
06 1C WPVI-TV Philadelphia	AP _CY PA	176.8 356.9	90.95 BPCDT20120604AEC	40 02 33.0 75 14 33.0	62.900 330	6.0 395	99.8 105.8R	-14.9M<--*		
06 1C WPVI-TV Philadelphia	LI _CY PA	176.8 356.9	90.95 BLCDT20111019ACJ	40 02 33.0 75 14 33.0	34.000 330	6.0 395	93.4 99.4R	-8.4M<--*		
207A WJCS Allentown	LIC DEX PA	199.7 19.6	34.82 BLED20090824AGH	40 33 52.0 75 26 25.0	0.120 279	20.8 432	14.1 Beacon Broadcasting Corpor	2.9	3.9	
209B1 WDVR Delaware Township	LIC DE_ NJ	143.3 323.5	48.36 BLED20090330ABU	40 30 36.0 74 57 34.0	3.800 221	33.9 221	20.8 Penn-jersey Educational Ra	4.0	9.1	
208B WITF-FM Harrisburg	LIC _CX PA	247.2 66.1	144.11 BMLED20040130ADW	40 20 44.0 76 52 07.0	5.900 415	118.7 599	46.1 Witf, Inc.	8.1	38.3	
207A WNJY Netcong	LIC DEX NJ	86.3 266.7	50.75 BLED20080707AEO	40 53 14.0 74 41 55.0	0.520 131	26.0 385	16.8 New York Public Radio	9.6	9.9	
208A WSOU South Orange	LIC _CX NJ	98.1 278.8	89.86 BMLED20050909ABX	40 44 28.0 74 14 42.0	2.400 95	65.5 149	18.5 Seton Hall University	10.1	22.2	
208A WUUA Glen Spey	LIC _CX NY	25.9 206.2	82.28 BLED20130614AAU	41 31 27.0 74 52 08.0	0.110 120	48.6 477	12.3 B. Stephen Demchuk Foundat	16.2	10.2	
210B WVIA-FM Scranton	LIC DCX PA	307.1 126.7	59.77 BLED20081107AEO	41 10 55.0 75 52 17.0	7.400 381	4.3 761	45.2 Northeastern Pennsylvania	37.0	13.3	
205A WBYO Sellersville	LIC DVN PA	184.5 4.5	53.02 BLED19950531KB	40 23 02.0 75 21 02.0	0.900 133	1.5 274	18.0 Four Rivers Community Broa	41.2	33.5	

Terrain database is NED 03 SEC , R= 73.215 qualifying spacings or FCC minimum Spacings in KM, M= Margin in KM  
In & Out distances between contours are shown at closest points. Reference zone= - Zone 1, Co to 3rd adjacent.  
All separation margins (if shown) include rounding. Call signs with strikeout need not be protected.  
Ant Column: (D= DA Standard, Z= DA 73.215, N= Not DA 73.215, \_= Omni), Polarization (C,H,V,E), Beamtilt(Y,N,X)  
"\*"affixed to 'IN' or 'OUT' values = site inside restricted contour.  
« = Station meets FCC minimum distance spacing for its class.

\*<-- Ch 6 TV is protected using section 73.525 - Please see channel-six TV attachment

## HOW TO READ THE FM COMPUTER PRINT-OUT

### Full Service Stations

The computer printout should be self-explanatory for the most part. The parameters of the station being checked, (reference station) are printed in the heading. Contour distances are in kilometers and are predicted using the Commission's TVFMINT FORTRAN subroutine. When interference contour distances are less than 16 kilometers the F(50-50) tables are used. If signal contour distances are less than 1.6 km the free-space equation is used.

The column listed "IN " is the difference in kilometers between of the reference station's protected contour and the data file station's interference contour at the closest point between the contours. (All distances are derived by the method detailed in Sec. 73.208 of the Rules and Regulations as amended in Docket 80-90.) Therefore, "IN" column is a measure of incoming interference. Negative distances in this column indicate the presence of contour overlap. Listed antenna heights and power are those given in the FCC database. The column labeled "OUT " shows the greatest distance in kilometers of overlap or smallest of clearance between the reference station's interference contour and the database station's protected contour. Negative distance figures in this column indicate outgoing contour overlap.

Under the "AZI" column, the first row of numbers indicate the True North bearings from the reference station toward the database stations, while the numbers in the second row indicate the reverse bearings from the database stations to the reference station.

The columns labeled "INT" and "PRO" contain the distance in kilometers of the appropriate interference contour and the protected contour of a data base station.

For I.F. relationships, some channel-six TV relationships and relationships with commercial channel stations providing clearance the minimum spacings values the "IN" and "OUT" columns can change their significance. The letter "R" stands for the minimum **required** distance in kilometers, while the letter "M" in the next column follows the **available clear space** (or lack of it) in kilometers. Minimum separation distances when displayed are taken from Sec 73.207 of the rules as amended. Canadian and Mexican separation distances, U/D ratios and protected contour values are from the US/Mexican Working Agreement and the US/Canada Working Agreement".

The call letters of stations meeting the minimum separation distances under the rules will be flagged by the characters "<<" appended to the right-hand side of the call sign. The "^" character appended to the call sign means the station has been "max-classed" according to the provisions of section 73.525 of the Rules.

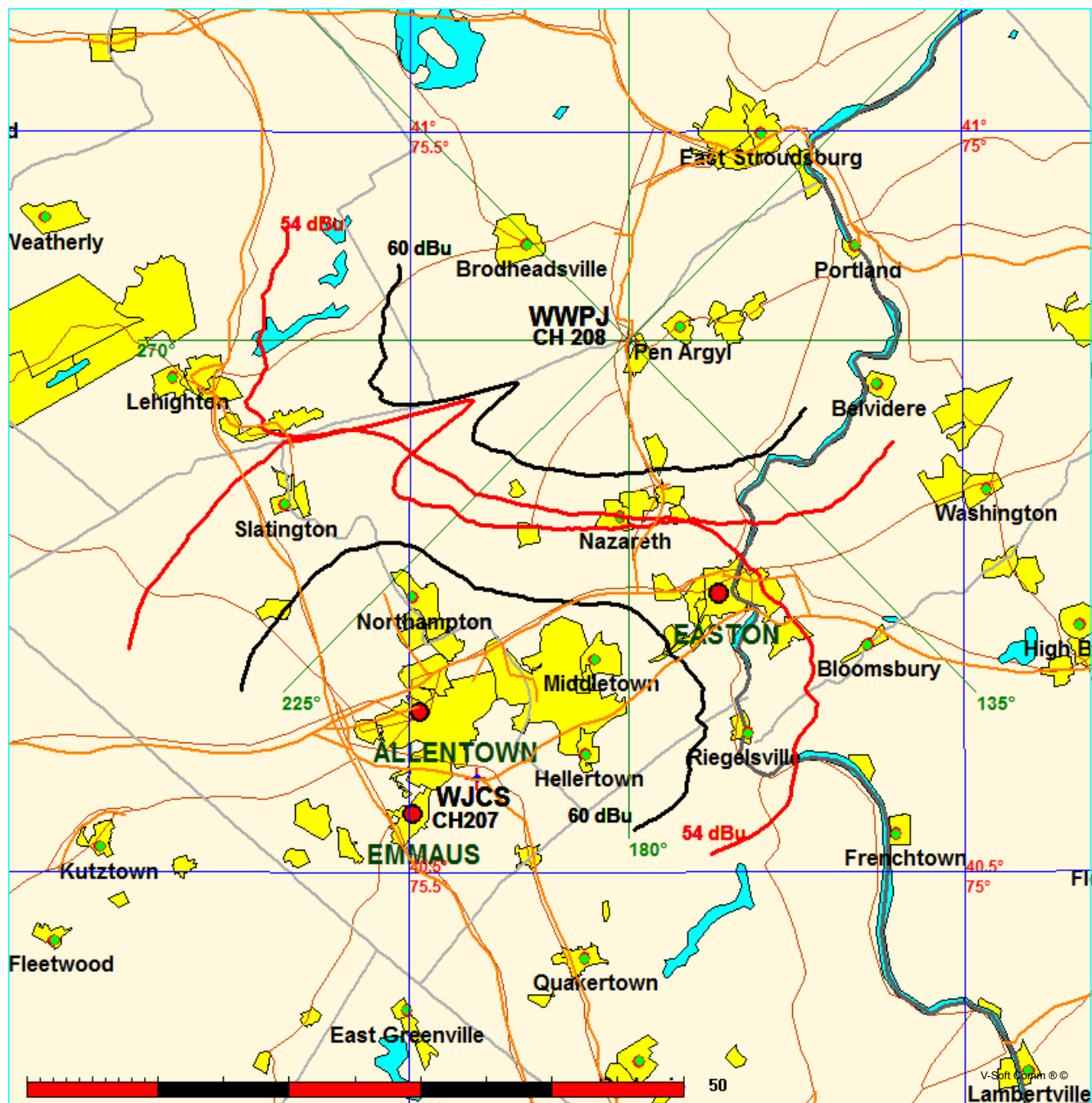
The first three letters of the "TYPE" column identify the current FCC status of the stations. The fourth letter will be a "D" if the facility is directional. "Z" indicates a 73.215 directional. An "N" indicates it is a 73.215 station that operates with an omni-directional antenna. The fifth letter will be an E, H or V depending on the type of antenna polarization. The sixth letter will be a "Y" if the antenna uses beam tilt or an "X" if the commission is not sure, otherwise it will be an "N" or left blank.

Contour-to-Contour Map Study WWPJ vs WJCS  
Town Of Monroe, Connecticut

FMCommander Single Allocation Study - 11-30-2016 - NED 03 SEC  
WWPJ's Overlaps (In= 2.91 km, Out= 3.86 km)

WWPJ CH 208 A DA  
Lat= 40 51 33.8, Lng= 75 18 04.4  
0.225 kW 230.8 m HAAT, 473 m COR  
Prot.= 60 dBu, Intef.= 54 dBu

WJCS CH 207 A DA BLED20090824AGH  
Lat= 40 33 52.0, Lng= 75 26 25.0  
0.12 kW 279 m HAAT, 432 m COR  
Prot.= 60 dBu, Intef.= 54 dBu



11-30-2016

Terrain Data: NED 03 SEC

FMOver Analysis

WWPJ

WJCS BLED20090824AGH

Channel = 208A

Max ERP = 0.225 kW

RCAMSL = 473 m

N. Lat. 40 51 33.8

W. Lng. 75 18 04.4

Protected

60 dBu

Channel = 207A

Max ERP = 0.12 kW

RCAMSL = 432 m

N. Lat. 40 33 52.0

W. Lng. 75 26 25.0

Interfering

54 dBu

Azimuth (degrees)	ERP (kW)	HAAT (m)	Dist (km)	Azimuth (degrees)	ERP (kW)	HAAT (m)	Dist (km)	Actual (dBu)	IX (km)
140.0	000.0185	0319.6	012.2	039.7	000.0715	0311.9	030.5	50.50	
141.0	000.0180	0319.9	012.1	039.5	000.0709	0311.9	030.4	50.57	
142.0	000.0176	0315.3	011.9	039.2	000.0698	0312.4	030.2	50.62	
143.0	000.0171	0313.5	011.8	038.9	000.0689	0313.0	030.0	50.68	
144.0	000.0168	0312.5	011.8	038.6	000.0682	0313.6	029.8	50.76	
145.0	000.0163	0312.4	011.7	038.3	000.0674	0314.1	029.7	50.82	
146.0	000.0158	0305.8	011.5	037.9	000.0661	0314.0	029.5	50.81	
147.0	000.0154	0303.0	011.4	037.5	000.0651	0313.7	029.4	50.83	
148.0	000.0150	0302.8	011.3	037.2	000.0643	0313.3	029.2	50.85	
149.0	000.0146	0303.6	011.2	037.0	000.0636	0313.0	029.0	50.90	
150.0	000.0142	0304.3	011.1	036.7	000.0629	0312.4	028.9	50.92	
151.0	000.0136	0306.4	011.1	036.4	000.0620	0312.0	028.8	50.94	
152.0	000.0131	0309.7	011.0	036.1	000.0613	0311.2	028.6	50.96	
153.0	000.0125	0312.1	010.9	035.8	000.0605	0310.1	028.5	50.95	
154.0	000.0120	0314.0	010.8	035.5	000.0596	0309.0	028.3	50.93	
155.0	000.0114	0316.2	010.7	035.1	000.0586	0308.3	028.2	50.91	
156.0	000.0109	0319.2	010.7	034.8	000.0577	0308.3	028.1	50.92	
157.0	000.0104	0320.7	010.6	034.4	000.0567	0308.3	028.0	50.91	
158.0	000.0099	0320.2	010.4	034.0	000.0556	0308.2	027.9	50.87	
159.0	000.0095	0319.7	010.3	033.6	000.0544	0309.0	027.8	50.85	
160.0	000.0090	0320.3	010.2	033.1	000.0534	0309.7	027.8	50.83	
161.0	000.0089	0321.1	010.1	032.9	000.0527	0310.3	027.6	50.88	
162.0	000.0088	0321.4	010.1	032.6	000.0521	0310.9	027.5	50.92	
163.0	000.0088	0319.9	010.1	032.3	000.0514	0310.9	027.4	50.94	
164.0	000.0087	0318.2	010.0	032.0	000.0506	0310.6	027.3	50.93	
165.0	000.0086	0316.2	010.0	031.7	000.0497	0310.6	027.2	50.91	
166.0	000.0086	0315.4	010.0	031.4	000.0490	0311.1	027.1	50.92	
167.0	000.0085	0313.4	009.9	031.0	000.0481	0312.3	027.0	50.94	
168.0	000.0085	0314.7	009.9	030.8	000.0476	0313.4	026.9	51.00	
169.0	000.0084	0316.4	009.9	030.5	000.0469	0314.5	026.8	51.04	
170.0	000.0083	0312.9	009.8	030.1	000.0460	0315.9	026.7	51.03	
171.0	000.0084	0313.2	009.9	029.9	000.0455	0316.3	026.6	51.09	
172.0	000.0085	0313.2	009.9	029.6	000.0452	0316.6	026.5	51.16	
173.0	000.0086	0315.4	009.9	029.4	000.0450	0316.7	026.3	51.24	
174.0	000.0086	0315.1	010.0	029.1	000.0447	0317.0	026.2	51.30	
175.0	000.0087	0312.1	010.0	028.8	000.0443	0317.0	026.1	51.31	

Azimuth (degrees)	ERP (kW)	HAAT (m)	Dist (km)	Azimuth (degrees)	ERP (kW)	HAAT (m)	Dist (km)	Actual (dBu)
176.0	000.0088	0311.6	010.0	028.5	000.0439	0316.8	026.0	51.35
177.0	000.0089	0309.2	010.0	028.2	000.0435	0317.2	025.9	51.38
178.0	000.0090	0305.9	009.9	027.8	000.0431	0317.5	025.8	51.40
179.0	000.0091	0302.6	009.9	027.4	000.0427	0317.7	025.8	51.40
180.0	000.0092	0301.1	009.9	027.1	000.0423	0317.6	025.7	51.42
181.0	000.0094	0300.4	010.0	026.8	000.0420	0317.5	025.6	51.46
182.0	000.0095	0299.8	010.0	026.5	000.0416	0317.8	025.5	51.49
183.0	000.0096	0301.0	010.0	026.2	000.0412	0318.3	025.4	51.56
184.0	000.0097	0302.7	010.1	025.8	000.0409	0318.6	025.2	51.61
185.0	000.0099	0304.2	010.2	025.5	000.0405	0318.6	025.1	51.67
186.0	000.0101	0301.7	010.2	025.2	000.0401	0318.2	025.0	51.66
187.0	000.0102	0296.0	010.1	024.7	000.0396	0317.8	025.1	51.59
188.0	000.0104	0293.6	010.1	024.3	000.0392	0317.6	025.0	51.58
189.0	000.0105	0294.9	010.2	024.0	000.0388	0317.7	024.9	51.61
190.0	000.0107	0293.1	010.2	023.6	000.0384	0318.0	024.8	51.61
191.0	000.0110	0292.6	010.3	023.2	000.0380	0317.9	024.7	51.64
192.0	000.0113	0292.6	010.3	022.8	000.0376	0317.5	024.6	51.66
193.0	000.0117	0291.7	010.4	022.5	000.0372	0317.0	024.5	51.67
194.0	000.0120	0291.0	010.5	022.1	000.0368	0316.7	024.4	51.67
195.0	000.0123	0287.8	010.5	021.6	000.0363	0316.7	024.4	51.65
196.0	000.0126	0286.8	010.5	021.2	000.0359	0316.6	024.3	51.64
197.0	000.0130	0286.7	010.6	020.8	000.0354	0316.4	024.3	51.64
198.0	000.0134	0284.9	010.6	020.4	000.0350	0316.1	024.2	51.62
199.0	000.0137	0283.6	010.7	019.9	000.0346	0315.6	024.1	51.59
200.0	000.0141	0283.2	010.7	019.5	000.0346	0315.5	024.1	51.63
201.0	000.0145	0280.8	010.8	019.0	000.0346	0315.4	024.1	51.65
202.0	000.0150	0277.6	010.8	018.6	000.0346	0315.5	024.0	51.67
203.0	000.0154	0274.1	010.8	018.1	000.0346	0315.2	024.0	51.66
204.0	000.0159	0272.3	010.9	017.7	000.0346	0314.6	024.0	51.66
205.0	000.0164	0271.1	010.9	017.2	000.0346	0313.9	024.0	51.66
206.0	000.0169	0267.5	010.9	016.8	000.0346	0313.2	024.0	51.63
207.0	000.0174	0266.8	011.0	016.3	000.0346	0312.8	024.0	51.64
208.0	000.0179	0267.7	011.1	015.8	000.0346	0312.8	023.9	51.68
209.0	000.0184	0269.9	011.2	015.3	000.0346	0312.9	023.8	51.74
210.0	000.0189	0268.4	011.2	014.8	000.0346	0312.6	023.9	51.73
211.0	000.0200	0264.7	011.3	014.3	000.0346	0312.3	023.8	51.73
212.0	000.0209	0263.5	011.4	013.8	000.0346	0312.0	023.8	51.75
213.0	000.0219	0262.5	011.5	013.2	000.0346	0311.9	023.8	51.77
214.0	000.0229	0260.8	011.6	012.7	000.0346	0311.6	023.8	51.76
215.0	000.0241	0259.3	011.7	012.2	000.0346	0311.2	023.7	51.77
216.0	000.0251	0259.7	011.8	011.6	000.0346	0310.6	023.7	51.78
217.0	000.0263	0257.5	011.9	011.0	000.0346	0310.1	023.7	51.76
218.0	000.0276	0255.0	012.0	010.5	000.0346	0309.6	023.7	51.72
219.0	000.0288	0254.4	012.1	009.9	000.0346	0309.4	023.7	51.72
220.0	000.0303	0251.4	012.2	009.4	000.0348	0309.4	023.8	51.71
221.0	000.0316	0248.2	012.2	008.9	000.0350	0309.3	023.9	51.68
222.0	000.0332	0247.1	012.3	008.3	000.0351	0309.0	023.9	51.68
223.0	000.0348	0243.7	012.4	007.8	000.0353	0308.7	024.0	51.63
224.0	000.0364	0238.3	012.4	007.4	000.0354	0308.2	024.1	51.55
225.0	000.0380	0233.5	012.4	007.0	000.0356	0308.0	024.2	51.47
226.0	000.0399	0227.8	012.4	006.6	000.0357	0308.1	024.3	51.38

Azimuth (degrees)	ERP (kW)	HAAT (m)	Dist (km)		Azimuth (degrees)	ERP (kW)	HAAT (m)	Dist (km)	Actual (dBu)
227.0	000.0418	0223.9	012.4		006.1	000.0359	0308.4	024.5	51.33
228.0	000.0438	0223.5	012.5		005.6	000.0360	0308.9	024.5	51.33
229.0	000.0458	0226.0	012.8		004.9	000.0363	0309.7	024.5	51.38
230.0	000.0480	0227.7	012.9		004.2	000.0365	0309.4	024.5	51.38
231.0	000.0501	0229.3	013.1		003.5	000.0367	0308.7	024.6	51.36
232.0	000.0525	0230.8	013.3		002.8	000.0370	0308.3	024.6	51.34
233.0	000.0551	0228.6	013.4		002.3	000.0371	0308.4	024.7	51.28
234.0	000.0576	0227.9	013.5		001.8	000.0373	0308.5	024.8	51.22
235.0	000.0604	0228.3	013.7		001.1	000.0375	0308.5	024.9	51.19
236.0	000.0632	0230.7	013.9		000.4	000.0378	0307.6	025.0	51.14
237.0	000.0661	0229.0	014.0		359.9	000.0381	0307.4	025.1	51.07
238.0	000.0693	0222.5	014.0		359.7	000.0386	0307.6	025.4	50.97
239.0	000.0726	0212.5	013.8		359.7	000.0386	0307.6	025.7	50.77
240.0	000.0760	0202.0	013.6		359.7	000.0384	0307.5	026.0	50.54
241.0	000.0797	0191.3	013.5		359.9	000.0382	0307.4	026.3	50.31
242.0	000.0832	0175.6	013.1		000.3	000.0378	0307.6	026.6	50.01
243.0	000.0873	0155.3	012.4		001.4	000.0374	0308.6	027.2	49.65
244.0	000.0913	0137.3	011.7		002.4	000.0371	0308.4	027.7	49.28
245.0	000.0956	0120.6	011.1		003.3	000.0368	0308.6	028.1	48.96
246.0	000.1001	0104.9	010.6		004.1	000.0365	0309.3	028.6	48.68
247.0	000.1050	0092.0	010.0		004.9	000.0363	0309.7	029.0	48.41
248.0	000.1099	0078.8	009.4		005.8	000.0360	0309.0	029.4	48.09
249.0	000.1150	0071.3	009.0		006.3	000.0358	0308.3	029.7	47.87
250.0	000.1206	0075.8	009.4		005.5	000.0361	0308.9	029.7	47.94
251.0	000.1262	0103.2	011.1		002.4	000.0371	0308.4	029.2	48.33
252.0	000.1320	0156.9	013.8		357.1	000.0437	0314.7	028.6	49.62
253.0	000.1383	0202.8	015.9		352.8	000.0533	0314.3	028.3	50.60
254.0	000.1447	0235.2	017.5		349.7	000.0611	0320.6	028.4	51.31
255.0	000.1517	0255.8	018.5		347.7	000.0676	0329.2	028.7	51.85
256.0	000.1588	0269.0	019.1		346.3	000.0723	0335.6	029.0	52.13
257.0	000.1660	0270.7	019.4		345.7	000.0742	0337.5	029.3	52.09
258.0	000.1738	0259.3	019.2		346.1	000.0729	0336.4	029.6	51.79
259.0	000.1822	0258.5	019.4		345.8	000.0741	0337.5	030.0	51.69

11-30-2016

Terrain Data: NED 03 SEC

FMOver Analysis

WJCS BLED20090824AGH

WWPJ

Channel = 207A

Max ERP = 0.12 kW

RCAMSL = 432 m

N. Lat. 40 33 52.0

W. Lng. 75 26 25.0

Protected

60 dBu

Channel = 208A

Max ERP = 0.225 kW

RCAMSL = 473 m

N. Lat. 40 51 33.8

W. Lng. 75 18 04.4

Interfering

54 dBu

Azimuth (degrees)	ERP (kW)	HAAT (m)	Dist (km)	Azimuth (degrees)	ERP (kW)	HAAT (m)	Dist (km)	Actual (dBu)	IX (km)
320.0	000.1200	0317.4	019.4	233.5	000.0564	0228.0	030.1	47.08	
321.0	000.1200	0319.3	019.5	233.7	000.0568	0227.9	029.8	47.30	
322.0	000.1200	0318.7	019.4	233.6	000.0567	0227.9	029.4	47.50	
323.0	000.1200	0318.7	019.4	233.7	000.0568	0227.9	029.1	47.71	
324.0	000.1200	0318.9	019.5	233.7	000.0568	0227.9	028.7	47.92	
325.0	000.1200	0317.8	019.4	233.6	000.0566	0228.0	028.4	48.12	
326.0	000.1200	0317.1	019.4	233.5	000.0564	0228.0	028.1	48.33	
327.0	000.1200	0318.6	019.4	233.6	000.0566	0228.0	027.7	48.55	
328.0	000.1200	0320.6	019.5	233.7	000.0567	0227.9	027.4	48.79	
329.0	000.1200	0323.5	019.6	233.8	000.0570	0227.9	027.0	49.04	
330.0	000.1200	0324.9	019.6	233.8	000.0571	0227.9	026.7	49.27	
331.0	000.1174	0324.8	019.5	233.5	000.0563	0228.1	026.4	49.44	
332.0	000.1148	0323.4	019.4	233.0	000.0552	0228.6	026.0	49.59	
333.0	000.1123	0322.4	019.2	232.6	000.0541	0229.8	025.7	49.76	
334.0	000.1098	0322.4	019.1	232.2	000.0531	0230.7	025.4	49.93	
335.0	000.1073	0323.6	019.1	231.9	000.0522	0230.8	025.1	50.08	
336.0	000.1048	0324.9	019.0	231.5	000.0514	0230.4	024.8	50.22	
337.0	000.1024	0329.9	019.0	231.4	000.0511	0230.1	024.5	50.42	
338.0	000.1000	0331.6	018.9	231.0	000.0502	0229.4	024.2	50.54	
339.0	000.0976	0332.0	018.8	230.6	000.0492	0228.2	023.9	50.61	
340.0	000.0953	0332.7	018.7	230.1	000.0482	0227.8	023.6	50.71	
341.0	000.0914	0334.0	018.6	229.4	000.0468	0227.1	023.4	50.74	
342.0	000.0876	0336.5	018.4	228.8	000.0454	0225.6	023.1	50.74	
343.0	000.0839	0335.8	018.2	228.0	000.0438	0223.5	022.9	50.66	
344.0	000.0803	0337.3	018.1	227.3	000.0424	0223.3	022.7	50.67	
345.0	000.0767	0337.0	017.8	226.4	000.0407	0225.8	022.5	50.73	
346.0	000.0732	0337.0	017.6	225.6	000.0391	0230.3	022.4	50.84	
347.0	000.0698	0332.7	017.3	224.5	000.0371	0236.0	022.3	50.89	
348.0	000.0665	0327.3	017.0	223.3	000.0352	0242.2	022.2	50.90	
349.0	000.0633	0321.6	016.6	222.0	000.0332	0247.0	022.2	50.83	
350.0	000.0602	0320.4	016.3	221.1	000.0317	0248.1	022.2	50.71	
351.0	000.0577	0317.7	016.1	220.1	000.0304	0251.0	022.1	50.66	
352.0	000.0553	0315.0	015.8	219.1	000.0290	0254.1	022.1	50.58	

Azimuth (degrees)	ERP (kW)	HAAT (m)	Dist (km)	Azimuth (degrees)	ERP (kW)	HAAT (m)	Dist (km)	Actual (dBu)
353.0	000.0529	0314.2	015.6	218.2	000.0279	0254.7	022.0	50.48
354.0	000.0506	0313.9	015.4	217.4	000.0268	0256.5	022.0	50.40
355.0	000.0484	0315.0	015.3	216.6	000.0258	0258.3	021.9	50.36
356.0	000.0462	0315.4	015.1	215.8	000.0249	0259.5	021.8	50.27
357.0	000.0440	0314.8	014.9	214.9	000.0240	0259.4	021.8	50.11
358.0	000.0419	0311.2	014.6	214.0	000.0229	0260.8	021.9	49.91
359.0	000.0399	0308.8	014.4	213.1	000.0220	0262.7	021.9	49.76
000.0	000.0379	0307.3	014.2	212.2	000.0212	0263.1	022.0	49.57
001.0	000.0376	0308.4	014.2	211.7	000.0206	0263.9	021.8	49.58
002.0	000.0372	0308.4	014.2	211.1	000.0200	0264.6	021.8	49.55
003.0	000.0369	0308.3	014.1	210.5	000.0194	0266.9	021.7	49.55
004.0	000.0366	0309.2	014.1	209.9	000.0188	0268.9	021.6	49.56
005.0	000.0362	0309.5	014.1	209.2	000.0185	0270.2	021.5	49.59
006.0	000.0359	0308.7	014.0	208.6	000.0182	0269.0	021.4	49.51
007.0	000.0356	0308.0	014.0	207.9	000.0179	0267.4	021.4	49.42
008.0	000.0353	0308.8	014.0	207.3	000.0175	0266.2	021.3	49.36
009.0	000.0349	0309.3	014.0	206.7	000.0172	0266.8	021.3	49.35
010.0	000.0346	0309.4	013.9	206.0	000.0169	0267.5	021.2	49.32
011.0	000.0346	0310.1	013.9	205.4	000.0166	0270.6	021.1	49.40
012.0	000.0346	0311.0	014.0	204.8	000.0163	0271.7	021.1	49.41
013.0	000.0346	0311.8	014.0	204.1	000.0160	0272.4	021.0	49.40
014.0	000.0346	0312.2	014.0	203.5	000.0157	0273.0	020.9	49.37
015.0	000.0346	0312.8	014.0	202.8	000.0154	0274.7	020.9	49.38
016.0	000.0346	0312.8	014.0	202.1	000.0150	0277.2	020.9	49.39
017.0	000.0346	0313.6	014.0	201.5	000.0147	0279.4	020.8	49.40
018.0	000.0346	0315.1	014.1	200.8	000.0144	0281.1	020.8	49.39
019.0	000.0346	0315.4	014.1	200.1	000.0141	0282.9	020.8	49.37
020.0	000.0346	0315.6	014.1	199.5	000.0139	0283.5	020.8	49.31
021.0	000.0356	0316.5	014.2	198.8	000.0136	0283.8	020.6	49.34
022.0	000.0367	0316.7	014.3	198.1	000.0134	0284.7	020.5	49.37
023.0	000.0378	0317.7	014.4	197.3	000.0131	0286.6	020.4	49.40
024.0	000.0389	0317.7	014.5	196.6	000.0128	0286.2	020.4	49.35
025.0	000.0400	0318.0	014.6	195.8	000.0126	0287.0	020.3	49.35
026.0	000.0411	0318.5	014.7	195.1	000.0123	0287.7	020.2	49.34
027.0	000.0422	0317.6	014.8	194.3	000.0121	0290.1	020.2	49.34
028.0	000.0433	0317.5	014.9	193.5	000.0119	0291.7	020.2	49.32
029.0	000.0445	0317.0	015.0	192.7	000.0116	0292.1	020.2	49.25
030.0	000.0457	0316.2	015.1	192.0	000.0113	0292.5	020.2	49.14
031.0	000.0481	0312.5	015.2	191.2	000.0110	0292.5	020.2	49.05
032.0	000.0505	0310.6	015.3	190.3	000.0108	0293.0	020.1	49.00
033.0	000.0530	0310.0	015.5	189.4	000.0106	0293.8	020.1	48.98
034.0	000.0556	0308.2	015.7	188.5	000.0105	0294.5	020.0	48.97
035.0	000.0582	0308.2	015.8	187.6	000.0103	0294.5	020.0	48.95
036.0	000.0609	0310.7	016.1	186.5	000.0102	0298.4	019.9	49.07
037.0	000.0637	0313.0	016.4	185.4	000.0100	0304.9	019.8	49.24
038.0	000.0665	0314.1	016.6	184.4	000.0098	0303.8	019.8	49.15
039.0	000.0693	0312.7	016.7	183.5	000.0097	0301.5	019.8	49.00
040.0	000.0723	0311.9	016.9	182.5	000.0095	0300.5	019.9	48.87
041.0	000.0739	0312.7	017.0	181.6	000.0094	0299.6	020.0	48.72
042.0	000.0755	0313.7	017.1	180.7	000.0093	0300.6	020.1	48.62
043.0	000.0771	0314.8	017.3	179.8	000.0092	0301.2	020.2	48.48

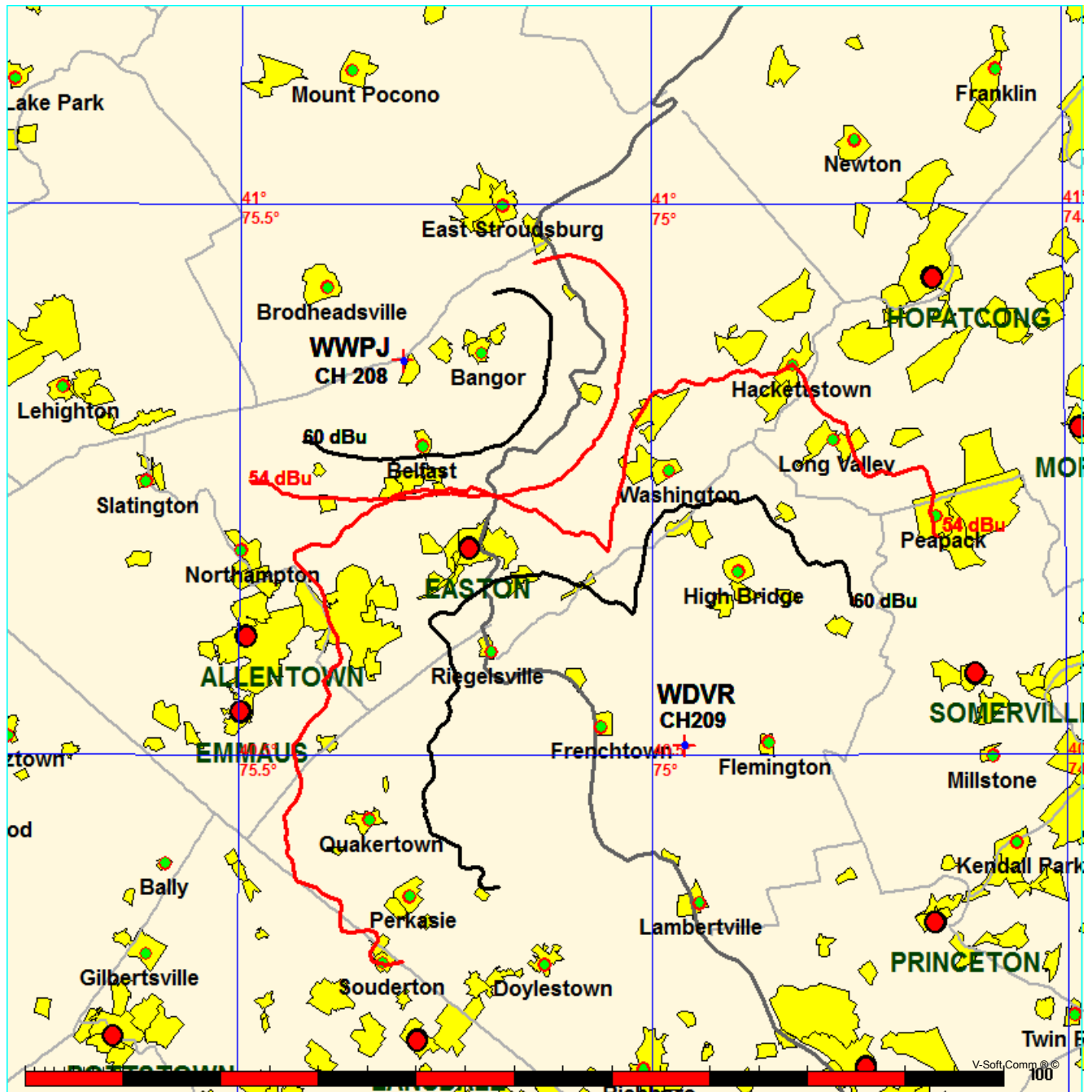
Azimuth (degrees)	ERP (kW)	HAAT (m)	Dist (km)	Azimuth (degrees)	ERP (kW)	HAAT (m)	Dist (km)	Actual (dBu)
044.0	000.0787	0315.5	017.4	179.0	000.0091	0302.6	020.3	48.38
045.0	000.0804	0313.3	017.4	178.4	000.0090	0304.9	020.5	48.25
046.0	000.0821	0312.0	017.5	177.7	000.0090	0306.8	020.7	48.12
047.0	000.0838	0310.2	017.5	177.0	000.0089	0309.0	020.9	48.00
048.0	000.0855	0307.1	017.5	176.5	000.0089	0310.9	021.1	47.84
049.0	000.0872	0305.2	017.5	175.9	000.0088	0311.6	021.3	47.66
050.0	000.0890	0305.4	017.6	175.2	000.0088	0311.9	021.5	47.49
051.0	000.0909	0302.3	017.6	174.8	000.0087	0312.4	021.8	47.28
052.0	000.0929	0298.3	017.6	174.4	000.0087	0313.7	022.1	47.09
053.0	000.0949	0295.4	017.6	174.0	000.0086	0315.2	022.3	46.92
054.0	000.0969	0296.4	017.8	173.3	000.0086	0315.9	022.5	46.75
055.0	000.0989	0294.6	017.8	172.8	000.0085	0314.9	022.8	46.51
056.0	000.1010	0288.2	017.7	172.7	000.0085	0314.6	023.1	46.25
057.0	000.1031	0280.7	017.5	172.7	000.0085	0314.6	023.4	46.00
058.0	000.1052	0277.3	017.5	172.5	000.0085	0314.2	023.7	45.76
059.0	000.1073	0277.8	017.6	171.9	000.0085	0313.1	024.0	45.54
060.0	000.1094	0280.8	017.8	171.2	000.0084	0313.0	024.2	45.34
061.0	000.1094	0286.4	018.0	170.6	000.0083	0313.2	024.4	45.15
062.0	000.1094	0288.0	018.0	170.2	000.0083	0312.8	024.7	44.93
063.0	000.1094	0288.2	018.0	170.0	000.0083	0312.9	025.0	44.71
064.0	000.1094	0291.9	018.2	169.5	000.0083	0315.4	025.3	44.61
065.0	000.1094	0295.9	018.3	169.0	000.0084	0316.4	025.5	44.46
066.0	000.1094	0296.7	018.3	168.8	000.0084	0316.0	025.8	44.25
067.0	000.1094	0299.7	018.4	168.5	000.0084	0315.2	026.1	44.04
068.0	000.1094	0302.3	018.5	168.2	000.0085	0314.9	026.4	43.85
069.0	000.1094	0305.1	018.6	167.9	000.0085	0314.5	026.7	43.64
070.0	000.1094	0299.1	018.4	168.2	000.0085	0314.9	027.1	43.41
071.0	000.1091	0293.8	018.2	168.5	000.0084	0315.1	027.4	43.18
072.0	000.1087	0294.9	018.2	168.3	000.0084	0315.0	027.7	42.98
073.0	000.1083	0293.4	018.2	168.4	000.0084	0315.1	028.1	42.78
074.0	000.1080	0286.6	017.9	168.8	000.0084	0316.0	028.4	42.58
075.0	000.1076	0274.5	017.5	169.6	000.0083	0314.5	028.7	42.29
076.0	000.1073	0274.3	017.5	169.6	000.0083	0314.5	029.1	42.10
077.0	000.1069	0284.4	017.8	169.0	000.0084	0316.3	029.3	42.01
078.0	000.1065	0288.2	017.9	168.7	000.0084	0315.8	029.7	41.83
079.0	000.1062	0284.8	017.8	169.0	000.0084	0316.3	030.0	41.65

Contour-to-Contour Map, WWPJ vs WDVR  
Town Of Monroe, Connecticut

FMCommander Single Allocation Study - 11-30-2016 - NED 03 SEC  
WWPJ's Overlaps (In= 4.03 km, Out= 9.09 km)

WWPJ CH 208 A DA  
Lat= 40 51 33.8, Lng= 75 18 04.4  
0.225 kW 230.8 m HAAT, 473 m COR  
Prot.= 60 dBu, Intef.= 54 dBu

WDVR CH 209 B1 DA BLED20090330ABU  
Lat= 40 30 36.0, Lng= 74 57 34.0  
3.8 kW 221 m HAAT, 220.7 m COR  
Prot.= 60 dBu, Intef.= 54 dBu



11-30-2016

Terrain Data: NED 03 SEC

FMOver Analysis

WWPJ

WDVR BLED20090330ABU

Channel = 208A

Max ERP = 0.225 kW

RCAMSL = 473 m

N. Lat. 40 51 33.8

W. Lng. 75 18 04.4

Protected

60 dBu

Channel = 209B1

Max ERP = 3.8 kW

RCAMSL = 220.7 m

N. Lat. 40 30 36.0

W. Lng. 74 57 34.0

Interfering

54 dBu

Azimuth (degrees)	ERP (kW)	HAAT (m)	Dist (km)	Azimuth (degrees)	ERP (kW)	HAAT (m)	Dist (km)	Actual (dBu)	IX (km)
083.0	000.0666	0264.0	015.1	341.3	003.4769	0040.8	042.9	45.11	
084.0	000.0656	0264.6	015.0	341.2	003.4724	0040.5	042.7	45.14	
085.0	000.0646	0264.8	015.0	341.0	003.4669	0040.1	042.5	45.13	
086.0	000.0637	0265.2	014.9	340.9	003.4615	0039.7	042.2	45.13	
087.0	000.0627	0265.4	014.9	340.7	003.4557	0039.4	042.0	45.13	
088.0	000.0615	0270.5	015.0	340.7	003.4556	0039.4	041.7	45.22	
089.0	000.0606	0271.9	015.0	340.6	003.4508	0038.9	041.5	45.20	
090.0	000.0597	0269.2	014.8	340.3	003.4402	0037.7	041.3	45.04	
091.0	000.0590	0269.1	014.8	340.1	003.4334	0037.2	041.0	45.00	
092.0	000.0583	0268.9	014.7	339.9	003.4244	0036.5	040.8	44.93	
093.0	000.0574	0269.1	014.7	339.7	003.4122	0036.2	040.6	44.92	
094.0	000.0567	0270.4	014.7	339.5	003.4033	0036.0	040.4	44.95	
095.0	000.0560	0269.8	014.6	339.3	003.3898	0035.8	040.2	44.96	
096.0	000.0554	0272.4	014.6	339.2	003.3828	0035.3	039.9	44.92	
097.0	000.0547	0270.5	014.5	338.9	003.3658	0034.1	039.7	44.72	
098.0	000.0538	0277.5	014.7	338.9	003.3661	0034.1	039.4	44.82	
099.0	000.0531	0280.8	014.7	338.8	003.3588	0033.8	039.2	44.82	
100.0	000.0525	0282.3	014.7	338.6	003.3474	0033.2	039.0	44.77	
101.0	000.0516	0283.2	014.7	338.3	003.3334	0032.9	038.8	44.75	
102.0	000.0510	0286.5	014.7	338.2	003.3247	0032.9	038.5	44.82	
103.0	000.0501	0287.7	014.7	337.9	003.3101	0033.6	038.4	45.01	
104.0	000.0495	0288.7	014.7	337.7	003.2960	0034.3	038.2	45.22	
105.0	000.0487	0290.0	014.7	337.4	003.2811	0034.9	038.0	45.37	
106.0	000.0478	0289.5	014.6	337.1	003.2624	0035.7	037.8	45.57	
107.0	000.0472	0288.7	014.5	336.7	003.2439	0037.0	037.7	45.86	
108.0	000.0464	0291.1	014.5	336.5	003.2297	0038.1	037.5	46.14	
109.0	000.0458	0289.2	014.4	336.1	003.2090	0040.0	037.4	46.52	
110.0	000.0450	0291.1	014.4	335.8	003.1933	0040.9	037.2	46.73	
111.0	000.0438	0293.0	014.4	335.5	003.1752	0041.2	037.0	46.83	
112.0	000.0426	0290.3	014.2	335.1	003.1499	0041.7	037.0	46.91	
113.0	000.0416	0292.1	014.2	334.7	003.1322	0042.4	036.8	47.06	
114.0	000.0404	0298.4	014.2	334.5	003.1192	0042.7	036.6	47.17	
115.0	000.0393	0298.1	014.1	334.1	003.0970	0043.8	036.6	47.39	
116.0	000.0382	0297.5	014.0	333.7	003.0743	0043.5	036.5	47.31	
117.0	000.0371	0297.8	013.9	333.3	003.0530	0043.4	036.4	47.29	
118.0	000.0362	0300.7	013.9	333.0	003.0352	0043.7	036.3	47.38	

Azimuth (degrees)	ERP (kW)	HAAT (m)	Dist (km)	Azimuth (degrees)	ERP (kW)	HAAT (m)	Dist (km)	Actual (dBu)
119.0	000.0351	0304.0	013.9	332.6	003.0166	0043.6	036.2	47.38
120.0	000.0340	0306.3	013.8	332.3	002.9967	0044.2	036.1	47.49
121.0	000.0334	0310.8	013.8	332.0	002.9803	0045.2	036.0	47.70
122.0	000.0327	0312.6	013.8	331.6	002.9610	0046.1	035.9	47.87
123.0	000.0318	0311.8	013.7	331.2	002.9387	0046.8	035.8	47.97
124.0	000.0311	0312.2	013.6	330.8	002.9181	0047.5	035.8	48.10
125.0	000.0305	0312.9	013.6	330.4	002.8978	0047.8	035.7	48.14
126.0	000.0298	0316.2	013.6	330.1	002.8793	0048.6	035.6	48.29
127.0	000.0292	0314.4	013.5	329.6	002.8738	0050.0	035.6	48.51
128.0	000.0284	0314.4	013.4	329.2	002.8712	0051.9	035.6	48.82
129.0	000.0277	0317.0	013.4	328.9	002.8688	0053.7	035.6	49.12
130.0	000.0271	0315.6	013.3	328.5	002.8661	0056.0	035.6	49.45
131.0	000.0262	0316.0	013.2	328.1	002.8634	0058.4	035.6	49.78
132.0	000.0253	0312.5	013.0	327.6	002.8606	0060.4	035.7	49.98
133.0	000.0244	0310.0	012.8	327.2	002.8578	0062.8	035.8	50.22
134.0	000.0235	0308.6	012.7	326.8	002.8552	0064.1	035.9	50.34
135.0	000.0226	0306.3	012.5	326.4	002.8526	0064.1	036.0	50.29
136.0	000.0218	0306.3	012.4	326.1	002.8502	0064.7	036.1	50.33
137.0	000.0209	0305.7	012.3	325.7	002.8477	0065.6	036.2	50.40
138.0	000.0201	0307.7	012.2	325.3	002.8454	0066.5	036.2	50.48
139.0	000.0193	0312.1	012.2	325.0	002.8432	0067.9	036.3	50.63
140.0	000.0185	0319.6	012.2	324.7	002.8410	0069.3	036.2	50.80
141.0	000.0180	0319.9	012.1	324.3	002.8388	0070.7	036.3	50.94
142.0	000.0176	0315.3	011.9	324.0	002.8365	0072.6	036.4	51.09
143.0	000.0171	0313.5	011.8	323.6	002.8344	0074.5	036.5	51.25
144.0	000.0168	0312.5	011.8	323.3	002.8323	0076.5	036.6	51.43
145.0	000.0163	0312.4	011.7	323.0	002.8302	0077.9	036.7	51.54
146.0	000.0158	0305.8	011.5	322.7	002.8282	0078.9	036.9	51.56
147.0	000.0154	0303.0	011.4	322.4	002.8263	0079.6	037.0	51.58
148.0	000.0150	0302.8	011.3	322.1	002.8244	0080.2	037.2	51.60
149.0	000.0146	0303.6	011.2	321.8	002.8225	0081.3	037.2	51.68
150.0	000.0142	0304.3	011.1	321.6	002.8207	0082.6	037.3	51.76
151.0	000.0136	0306.4	011.1	321.3	002.8189	0083.7	037.4	51.83
152.0	000.0131	0309.7	011.0	321.0	002.8171	0085.0	037.5	51.92
153.0	000.0125	0312.1	010.9	320.7	002.8154	0086.8	037.6	52.04
154.0	000.0120	0314.0	010.8	320.5	002.8137	0088.7	037.8	52.17
155.0	000.0114	0316.2	010.7	320.3	002.8122	0089.7	037.9	52.21
156.0	000.0109	0319.2	010.7	320.0	002.8106	0089.9	038.0	52.17
157.0	000.0104	0320.7	010.6	319.8	002.8225	0089.7	038.2	52.10
158.0	000.0099	0320.2	010.4	319.6	002.8342	0089.4	038.4	52.01
159.0	000.0095	0319.7	010.3	319.4	002.8452	0089.1	038.6	51.92
160.0	000.0090	0320.3	010.2	319.2	002.8561	0088.9	038.7	51.84
161.0	000.0089	0321.1	010.1	319.0	002.8701	0088.9	038.8	51.83
162.0	000.0088	0321.4	010.1	318.8	002.8836	0089.2	038.9	51.84
163.0	000.0088	0319.9	010.1	318.5	002.8969	0089.4	039.0	51.84
164.0	000.0087	0318.2	010.0	318.3	002.9089	0089.9	039.1	51.85
165.0	000.0086	0316.2	010.0	318.1	002.9204	0090.2	039.3	51.85
166.0	000.0086	0315.4	010.0	318.0	002.9323	0090.6	039.4	51.85
167.0	000.0085	0313.4	009.9	317.8	002.9432	0091.0	039.5	51.85
168.0	000.0085	0314.7	009.9	317.5	002.9571	0091.7	039.6	51.90
169.0	000.0084	0316.4	009.9	317.3	002.9699	0092.6	039.7	51.97

Azimuth (degrees)	ERP (kW)	HAAT (m)	Dist (km)		Azimuth (degrees)	ERP (kW)	HAAT (m)	Dist (km)	Actual (dBu)
170.0	000.0083	0312.9	009.8		317.2	002.9788	0093.2	039.8	51.98
171.0	000.0084	0313.2	009.9		316.9	002.9928	0093.8	039.9	52.02
172.0	000.0085	0313.2	009.9		316.7	003.0065	0093.9	040.0	52.02
173.0	000.0086	0315.4	009.9		316.5	003.0218	0093.6	040.0	51.99
174.0	000.0086	0315.1	010.0		316.3	003.0351	0093.6	040.1	51.97
175.0	000.0087	0312.1	010.0		316.1	003.0459	0093.7	040.2	51.94
176.0	000.0088	0311.6	010.0		315.9	003.0586	0094.0	040.3	51.95
177.0	000.0089	0309.2	010.0		315.7	003.0696	0094.3	040.5	51.94
178.0	000.0090	0305.9	009.9		315.5	003.0795	0094.6	040.6	51.93
179.0	000.0091	0302.6	009.9		315.4	003.0891	0095.1	040.7	51.93
180.0	000.0092	0301.1	009.9		315.2	003.0999	0095.8	040.8	51.96
181.0	000.0094	0300.4	010.0		315.0	003.1129	0096.4	040.9	51.99
182.0	000.0095	0299.8	010.0		314.8	003.1243	0096.8	041.1	51.99
183.0	000.0096	0301.0	010.0		314.6	003.1389	0097.5	041.1	52.04
184.0	000.0097	0302.7	010.1		314.4	003.1522	0098.3	041.2	52.08
185.0	000.0099	0304.2	010.2		314.1	003.1669	0099.0	041.3	52.12
186.0	000.0101	0301.7	010.2		314.0	003.1771	0099.6	041.5	52.13
187.0	000.0102	0296.0	010.1		313.9	003.1817	0099.7	041.6	52.08
188.0	000.0104	0293.6	010.1		313.7	003.1914	0100.0	041.8	52.05
189.0	000.0105	0294.9	010.2		313.5	003.2033	0100.2	041.9	52.04
190.0	000.0107	0293.1	010.2		313.4	003.2130	0100.5	042.0	52.02
191.0	000.0110	0292.6	010.3		313.2	003.2259	0100.6	042.1	52.00
192.0	000.0113	0292.6	010.3		313.0	003.2390	0100.9	042.3	51.99
193.0	000.0117	0291.7	010.4		312.8	003.2525	0101.4	042.4	52.00
194.0	000.0120	0291.0	010.5		312.6	003.2643	0101.8	042.5	51.99
195.0	000.0123	0287.8	010.5		312.4	003.2724	0102.0	042.7	51.96
196.0	000.0126	0286.8	010.5		312.3	003.2831	0102.4	042.8	51.94
197.0	000.0130	0286.7	010.6		312.1	003.2947	0102.7	043.0	51.93
198.0	000.0134	0284.9	010.6		311.9	003.3055	0102.9	043.1	51.90
199.0	000.0137	0283.6	010.7		311.8	003.3149	0103.2	043.3	51.87
200.0	000.0141	0283.2	010.7		311.6	003.3252	0103.4	043.4	51.84
201.0	000.0145	0280.8	010.8		311.5	003.3339	0103.7	043.6	51.81
202.0	000.0150	0277.6	010.8		311.4	003.3409	0103.9	043.7	51.76

11-30-2016

Terrain Data: NED 03 SEC

FMOver Analysis

WDVR BLED20090330ABU

WWPJ

Channel = 209B1

Max ERP = 3.8 kW

RCAMSL = 220.7 m

N. Lat. 40 30 36.0

W. Lng. 74 57 34.0

Protected

60 dBu

Channel = 208A

Max ERP = 0.225 kW

RCAMSL = 473 m

N. Lat. 40 51 33.8

W. Lng. 75 18 04.4

Interfering

54 dBu

Azimuth (degrees)	ERP (kW)	HAAT (m)	Dist (km)	Azimuth (degrees)	ERP (kW)	HAAT (m)	Dist (km)	Actual (dBu)	IX (km)
264.0	003.8000	0102.9	025.9	175.7	000.0088	0311.5	041.7	36.07	
265.0	003.8000	0102.4	025.8	175.6	000.0088	0311.5	041.3	36.27	
266.0	003.8000	0103.3	025.9	175.7	000.0088	0311.5	040.8	36.48	
267.0	003.8000	0104.7	026.1	176.0	000.0088	0311.6	040.4	36.69	
268.0	003.8000	0104.5	026.1	175.9	000.0088	0311.6	039.9	36.89	
269.0	003.8000	0106.3	026.3	176.2	000.0088	0311.3	039.4	37.10	
270.0	003.8000	0106.0	026.2	176.1	000.0088	0311.4	039.0	37.31	
271.0	003.8000	0102.3	025.8	175.4	000.0088	0311.7	038.6	37.48	
272.0	003.8000	0100.5	025.6	175.0	000.0087	0312.0	038.1	37.67	
273.0	003.8000	0098.8	025.4	174.7	000.0087	0312.7	037.7	37.86	
274.0	003.8000	0097.1	025.2	174.2	000.0087	0314.3	037.3	38.08	
275.0	003.8000	0092.7	024.6	173.3	000.0086	0315.9	037.0	38.24	
276.0	003.8000	0090.8	024.4	172.8	000.0085	0314.7	036.6	38.35	
277.0	003.8000	0090.1	024.3	172.5	000.0085	0314.2	036.2	38.51	
278.0	003.8000	0089.3	024.2	172.1	000.0085	0313.4	035.9	38.65	
279.0	003.8000	0091.5	024.5	172.4	000.0085	0314.0	035.4	38.91	
280.0	003.8000	0093.6	024.8	172.6	000.0085	0314.4	034.9	39.17	
281.0	003.8000	0090.8	024.4	171.8	000.0085	0313.1	034.6	39.24	
282.0	003.8000	0090.5	024.4	171.5	000.0084	0312.9	034.2	39.41	
283.0	003.8000	0087.7	024.0	170.7	000.0084	0313.2	033.9	39.50	
284.0	003.8000	0087.3	023.9	170.3	000.0083	0312.9	033.6	39.66	
285.0	003.8000	0089.1	024.2	170.4	000.0083	0313.0	033.1	39.90	
286.0	003.8000	0090.6	024.4	170.4	000.0083	0313.0	032.6	40.13	
287.0	003.8000	0091.5	024.5	170.3	000.0083	0312.8	032.2	40.33	
288.0	003.8000	0094.7	024.9	170.6	000.0083	0313.2	031.6	40.64	
289.0	003.8000	0098.0	025.3	170.9	000.0084	0313.2	031.0	40.96	
290.0	003.8000	0100.2	025.6	170.9	000.0084	0313.2	030.5	41.24	
291.0	003.8000	0102.4	025.8	170.9	000.0084	0313.2	030.0	41.54	
292.0	003.8000	0104.2	026.0	170.8	000.0084	0313.1	029.5	41.82	
293.0	003.8000	0108.2	026.5	171.1	000.0084	0313.1	028.9	42.20	
294.0	003.8000	0118.1	027.5	172.4	000.0085	0314.0	027.9	42.86	
295.0	003.8000	0132.6	028.8	174.2	000.0087	0314.4	026.8	43.67	
296.0	003.8000	0135.3	029.1	174.1	000.0087	0314.7	026.3	44.06	

Azimuth (degrees)	ERP (kW)	HAAT (m)	Dist (km)	Azimuth (degrees)	ERP (kW)	HAAT (m)	Dist (km)	Actual (dBu)
297.0	003.8000	0131.1	028.7	172.8	000.0085	0314.9	026.1	44.15
298.0	003.8000	0127.0	028.3	171.5	000.0084	0312.9	025.9	44.16
299.0	003.8000	0114.5	027.2	168.8	000.0084	0316.0	026.2	44.00
300.0	003.8000	0112.0	026.9	167.7	000.0085	0314.2	026.0	44.11
301.0	003.7621	0112.8	026.9	167.0	000.0085	0313.4	025.7	44.34
302.0	003.7244	0113.6	026.9	166.3	000.0085	0314.7	025.3	44.65
303.0	003.6869	0111.5	026.7	165.1	000.0086	0316.2	025.2	44.83
304.0	003.6495	0110.7	026.5	164.1	000.0087	0317.7	025.0	45.06
305.0	003.6124	0110.4	026.4	163.2	000.0088	0319.9	024.8	45.31
306.0	003.5754	0108.7	026.2	162.0	000.0088	0321.5	024.7	45.43
307.0	003.5387	0108.3	026.1	161.0	000.0089	0321.1	024.5	45.59
308.0	003.5021	0106.7	025.9	159.8	000.0091	0320.1	024.5	45.69
309.0	003.4657	0105.3	025.6	158.6	000.0096	0319.9	024.4	45.96
310.0	003.4295	0105.3	025.6	157.6	000.0101	0320.8	024.3	46.31
311.0	003.3648	0104.4	025.4	156.5	000.0107	0320.2	024.2	46.54
312.0	003.3008	0102.8	025.1	155.2	000.0113	0316.7	024.3	46.63
313.0	003.2373	0100.8	024.7	154.0	000.0120	0313.9	024.5	46.72
314.0	003.1745	0099.4	024.5	152.8	000.0126	0311.7	024.6	46.80
315.0	003.1123	0096.4	024.0	151.6	000.0133	0308.2	024.9	46.71
316.0	003.0507	0093.7	023.6	150.4	000.0140	0304.7	025.2	46.61
317.0	002.9897	0093.7	023.5	149.4	000.0144	0303.5	025.2	46.71
318.0	002.9294	0090.5	022.9	148.3	000.0149	0303.1	025.6	46.54
319.0	002.8696	0088.9	022.6	147.3	000.0153	0302.8	025.9	46.49
320.0	002.8105	0089.9	022.7	146.4	000.0156	0303.8	025.8	46.66
321.0	002.8170	0085.1	022.1	145.5	000.0161	0309.9	026.3	46.56
322.0	002.8236	0080.6	021.5	144.6	000.0165	0312.3	026.9	46.39
323.0	002.8301	0077.9	021.2	143.7	000.0169	0312.9	027.2	46.28
324.0	002.8367	0072.5	020.4	143.0	000.0171	0313.5	027.9	45.91
325.0	002.8433	0067.8	019.8	142.3	000.0175	0313.9	028.6	45.61
326.0	002.8498	0064.9	019.4	141.7	000.0178	0316.9	029.0	45.51
327.0	002.8564	0063.8	019.3	141.0	000.0180	0319.8	029.1	45.55
328.0	002.8630	0058.8	018.6	140.6	000.0182	0322.3	029.9	45.24
329.0	002.8696	0053.1	017.6	140.2	000.0184	0321.5	030.9	44.71
330.0	002.8762	0048.8	016.8	139.9	000.0186	0318.6	031.7	44.21
331.0	002.9294	0047.1	016.5	139.5	000.0189	0314.8	032.1	44.02
332.0	002.9830	0045.0	016.2	139.1	000.0192	0312.9	032.5	43.82
333.0	003.0371	0043.7	016.0	138.7	000.0195	0311.1	032.7	43.72
334.0	003.0917	0043.9	016.1	138.2	000.0200	0308.3	032.7	43.75
335.0	003.1468	0041.9	015.7	137.9	000.0202	0307.5	033.1	43.57
336.0	003.2024	0040.4	015.5	137.6	000.0205	0307.1	033.4	43.47
337.0	003.2584	0036.0	014.6	137.6	000.0204	0307.1	034.3	43.03
338.0	003.3150	0033.4	014.2	137.5	000.0205	0307.0	034.8	42.80
339.0	003.3720	0034.4	014.5	136.9	000.0210	0305.7	034.7	42.94
340.0	003.4295	0036.8	015.0	136.2	000.0216	0306.2	034.2	43.27
341.0	003.4657	0040.0	015.7	135.3	000.0224	0306.1	033.7	43.69
342.0	003.5021	0042.5	016.3	134.4	000.0231	0308.3	033.3	44.10
343.0	003.5387	0044.6	016.9	133.5	000.0239	0309.0	032.9	44.43
344.0	003.5754	0045.9	017.2	132.8	000.0246	0311.0	032.8	44.67
345.0	003.6124	0048.8	017.8	131.7	000.0255	0313.6	032.4	45.11
346.0	003.6495	0050.9	018.3	130.8	000.0264	0316.6	032.2	45.45
347.0	003.6869	0054.2	019.0	129.6	000.0274	0315.3	031.8	45.75

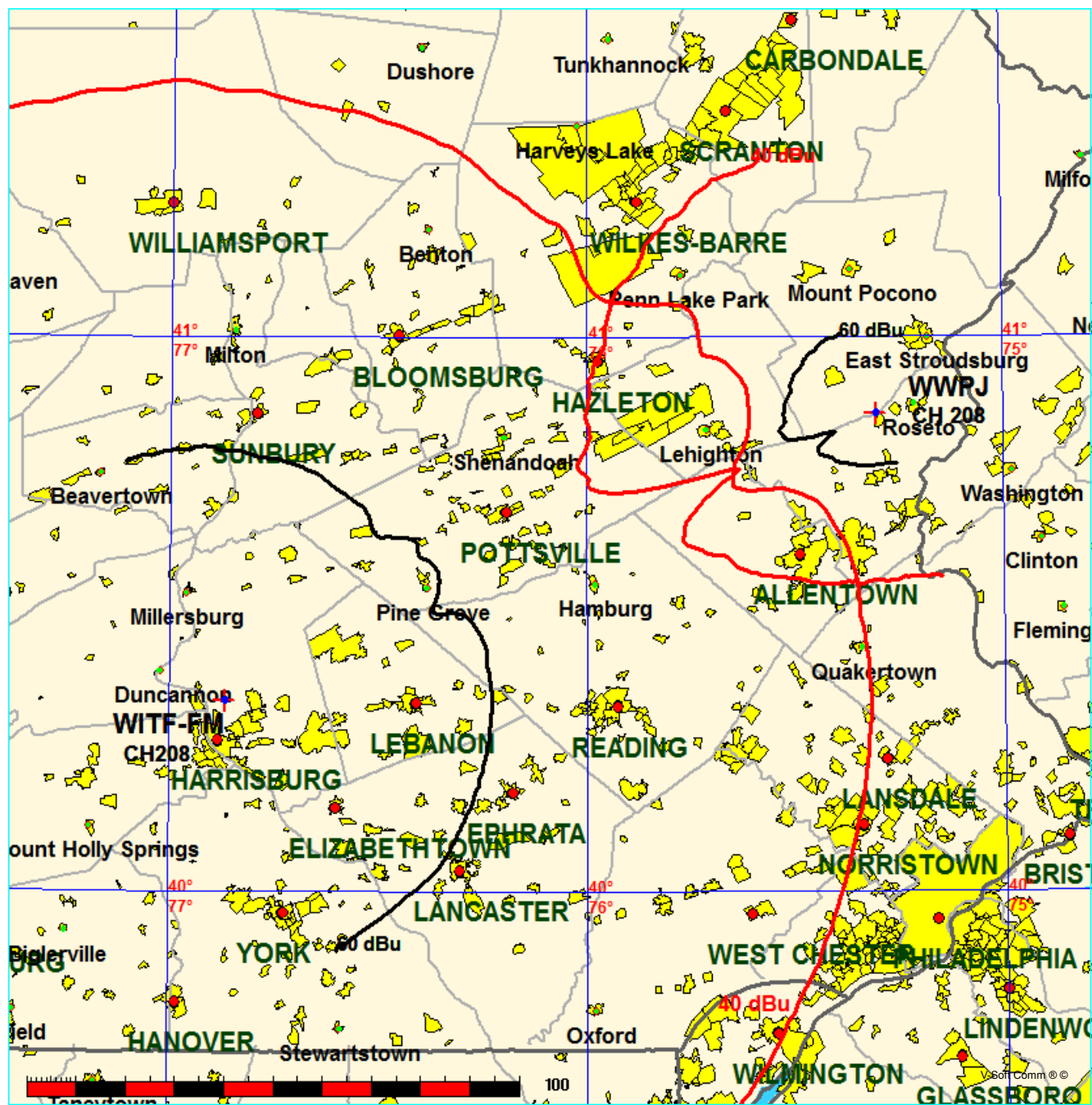
Azimuth (degrees)	ERP (kW)	HAAT (m)	Dist (km)	Azimuth (degrees)	ERP (kW)	HAAT (m)	Dist (km)	Actual (dBu)
348.0	003.7244	0060.8	020.2	127.8	000.0285	0313.8	031.2	46.24
349.0	003.7621	0065.4	020.9	126.4	000.0295	0316.0	030.9	46.62
350.0	003.8000	0069.9	021.6	125.0	000.0305	0313.1	030.6	46.80
351.0	003.8000	0073.4	022.1	123.9	000.0312	0311.9	030.5	46.91
352.0	003.8000	0076.1	022.4	122.9	000.0319	0312.2	030.6	47.00
353.0	003.8000	0079.1	022.8	121.8	000.0328	0312.9	030.6	47.12
354.0	003.8000	0082.4	023.3	120.7	000.0336	0309.3	030.7	47.09
355.0	003.8000	0084.8	023.6	119.7	000.0343	0305.7	030.8	47.01
356.0	003.8000	0085.2	023.7	119.2	000.0349	0304.3	031.1	46.87
357.0	003.8000	0084.6	023.6	118.9	000.0352	0303.9	031.5	46.69
358.0	003.8000	0085.5	023.7	118.4	000.0358	0302.7	031.8	46.58
359.0	003.8000	0088.9	024.1	117.3	000.0368	0298.2	031.9	46.50
000.0	003.8000	0089.5	024.2	116.8	000.0373	0297.6	032.3	46.37
001.0	003.8000	0088.1	024.0	116.8	000.0373	0297.6	032.7	46.14
002.0	003.8000	0087.5	024.0	116.6	000.0375	0297.3	033.1	45.96
003.0	003.8000	0088.0	024.0	116.2	000.0380	0297.4	033.5	45.83
004.0	003.8000	0090.2	024.3	115.5	000.0388	0297.8	033.8	45.80
005.0	003.8000	0090.0	024.3	115.2	000.0390	0297.9	034.2	45.63
006.0	003.8000	0090.9	024.4	114.8	000.0395	0298.4	034.5	45.52
007.0	003.8000	0094.0	024.8	114.0	000.0405	0298.2	034.8	45.49
008.0	003.8000	0095.1	025.0	113.6	000.0410	0295.3	035.2	45.27
009.0	003.8000	0095.4	025.0	113.3	000.0412	0293.9	035.6	45.06
010.0	003.8000	0097.0	025.2	112.8	000.0418	0291.5	036.0	44.86
011.0	003.8000	0096.3	025.1	112.8	000.0418	0291.4	036.4	44.65
012.0	003.8000	0095.2	025.0	112.9	000.0417	0291.7	036.9	44.43
013.0	003.8000	0096.8	025.2	112.5	000.0421	0290.4	037.3	44.25
014.0	003.8000	0098.0	025.3	112.2	000.0424	0290.0	037.7	44.08
015.0	003.8000	0100.9	025.7	111.5	000.0431	0291.4	038.1	44.01
016.0	003.8000	0104.5	026.1	110.8	000.0439	0293.3	038.5	43.96
017.0	003.8000	0103.0	025.9	111.0	000.0437	0292.9	039.0	43.71
018.0	003.8000	0100.6	025.6	111.4	000.0433	0291.8	039.4	43.42
019.0	003.8000	0096.0	025.1	112.2	000.0424	0290.0	039.9	43.06
020.0	003.8000	0092.9	024.7	112.7	000.0419	0291.0	040.4	42.84
021.0	003.8000	0090.0	024.3	113.2	000.0414	0293.2	040.8	42.65
022.0	003.8000	0087.8	024.0	113.6	000.0409	0295.4	041.2	42.48
023.0	003.8000	0087.3	023.9	113.7	000.0408	0296.0	041.7	42.30

Contour-to-Contour Map, WWPJ vs WITF-FM  
Town Of Monroe, Connecticut

FMCommander Single Allocation Study - 11-30-2016 - NED 03 SEC  
WWPJ's Overlaps (In= 8.09 km, Out= 38.34 km)

WWPJ CH 208 A DA  
Lat= 40 51 33.8, Lng= 75 18 04.4  
0.225 kW 230.8 m HAAT, 473 m COR  
Prot.= 60 dBu, Intef.= 40 dBu

WITF-FM CH 208 B BMLED20040130ADW  
Lat= 40 20 44.0, Lng= 76 52 07.0  
5.9 kW 415 m HAAT, 599 m COR  
Prot.= 60 dBu, Intef.= 40 dBu



11-30-2016

Terrain Data: NED 03 SEC

FMOver Analysis

WWPJ

WITF-FM BMLED20040130ADW

Channel = 208A

Max ERP = 0.225 kW

RCAMSL = 473 m

N. Lat. 40 51 33.8

W. Lng. 75 18 04.4

Protected

60 dBu

Channel = 208B

Max ERP = 5.9 kW

RCAMSL = 599 m

N. Lat. 40 20 44.0

W. Lng. 76 52 07.0

Interfering

40 dBu

Azimuth (degrees)	ERP (kW)	HAAT (m)	Dist (km)	Azimuth (degrees)	ERP (kW)	HAAT (m)	Dist (km)	Actual (dBu)	IX (km)
187.0	000.0102	0296.0	010.1	069.7	005.9000	0386.3	139.4	36.03	
188.0	000.0104	0293.6	010.1	069.7	005.9000	0385.6	139.2	36.05	
189.0	000.0105	0294.9	010.2	069.7	005.9000	0385.1	139.0	36.08	
190.0	000.0107	0293.1	010.2	069.7	005.9000	0384.4	138.8	36.10	
191.0	000.0110	0292.6	010.3	069.7	005.9000	0384.1	138.7	36.13	
192.0	000.0113	0292.6	010.3	069.6	005.9000	0383.7	138.5	36.17	
193.0	000.0117	0291.7	010.4	069.6	005.9000	0383.4	138.3	36.20	
194.0	000.0120	0291.0	010.5	069.6	005.9000	0382.9	138.1	36.23	
195.0	000.0123	0287.8	010.5	069.6	005.9000	0381.9	137.9	36.24	
196.0	000.0126	0286.8	010.5	069.5	005.9000	0381.2	137.8	36.27	
197.0	000.0130	0286.7	010.6	069.5	005.9000	0380.6	137.6	36.29	
198.0	000.0134	0284.9	010.6	069.5	005.9000	0379.9	137.4	36.32	
199.0	000.0137	0283.6	010.7	069.5	005.9000	0379.0	137.2	36.33	
200.0	000.0141	0283.2	010.7	069.4	005.9000	0378.3	137.0	36.36	
201.0	000.0145	0280.8	010.8	069.4	005.9000	0377.3	136.9	36.37	
202.0	000.0150	0277.6	010.8	069.3	005.9000	0376.2	136.7	36.37	
203.0	000.0154	0274.1	010.8	069.3	005.9000	0374.9	136.6	36.37	
204.0	000.0159	0272.3	010.9	069.3	005.9000	0373.8	136.4	36.38	
205.0	000.0164	0271.1	010.9	069.2	005.9000	0372.8	136.2	36.40	
206.0	000.0169	0267.5	010.9	069.2	005.9000	0371.2	136.1	36.38	
207.0	000.0174	0266.8	011.0	069.1	005.9000	0370.0	135.9	36.39	
208.0	000.0179	0267.7	011.1	069.1	005.9000	0369.1	135.7	36.41	
209.0	000.0184	0269.9	011.2	069.1	005.9000	0368.2	135.5	36.44	
210.0	000.0189	0268.4	011.2	069.0	005.9000	0366.7	135.3	36.44	
211.0	000.0200	0264.7	011.3	069.0	005.9000	0365.1	135.1	36.43	
212.0	000.0209	0263.5	011.4	068.9	005.9000	0363.8	134.9	36.44	
213.0	000.0219	0262.5	011.5	068.9	005.9000	0362.4	134.7	36.45	
214.0	000.0229	0260.8	011.6	068.8	005.9000	0360.8	134.6	36.44	
215.0	000.0241	0259.3	011.7	068.8	005.9000	0359.2	134.4	36.45	
216.0	000.0251	0259.7	011.8	068.8	005.9000	0357.8	134.1	36.45	
217.0	000.0263	0257.5	011.9	068.7	005.9000	0355.9	134.0	36.44	
218.0	000.0276	0255.0	012.0	068.6	005.9000	0353.8	133.8	36.42	
219.0	000.0288	0254.4	012.1	068.6	005.9000	0351.9	133.6	36.41	
220.0	000.0303	0251.4	012.2	068.5	005.9000	0349.4	133.4	36.37	
221.0	000.0316	0248.2	012.2	068.5	005.9000	0346.6	133.3	36.31	
222.0	000.0332	0247.1	012.3	068.4	005.9000	0344.1	133.1	36.28	

Azimuth (degrees)	ERP (kW)	HAAT (m)	Dist (km)	Azimuth (degrees)	ERP (kW)	HAAT (m)	Dist (km)	Actual (dBu)
223.0	000.0348	0243.7	012.4	068.3	005.9000	0340.9	132.9	36.22
224.0	000.0364	0238.3	012.4	068.2	005.9000	0337.2	132.8	36.13
225.0	000.0380	0233.5	012.4	068.2	005.9000	0333.3	132.7	36.03
226.0	000.0399	0227.8	012.4	068.1	005.9000	0329.5	132.6	35.93
227.0	000.0418	0223.9	012.4	068.0	005.9000	0325.9	132.5	35.85
228.0	000.0438	0223.5	012.5	067.9	005.9000	0322.8	132.3	35.81
229.0	000.0458	0226.0	012.8	067.9	005.9000	0320.2	132.1	35.79
230.0	000.0480	0227.7	012.9	067.8	005.9000	0317.4	131.8	35.77
231.0	000.0501	0229.3	013.1	067.7	005.9000	0314.5	131.6	35.74
232.0	000.0525	0230.8	013.3	067.7	005.9000	0311.9	131.3	35.73
233.0	000.0551	0228.6	013.4	067.6	005.9000	0309.3	131.2	35.70
234.0	000.0576	0227.9	013.5	067.5	005.9000	0307.4	131.0	35.69
235.0	000.0604	0228.3	013.7	067.4	005.9000	0306.3	130.8	35.71
236.0	000.0632	0230.7	013.9	067.3	005.9000	0305.7	130.5	35.75
237.0	000.0661	0229.0	014.0	067.2	005.9000	0305.4	130.3	35.78
238.0	000.0693	0222.5	014.0	067.1	005.9000	0305.6	130.3	35.79
239.0	000.0726	0212.5	013.8	067.0	005.9000	0306.2	130.4	35.78
240.0	000.0760	0202.0	013.6	066.9	005.9000	0307.0	130.6	35.76
241.0	000.0797	0191.3	013.5	066.8	005.9000	0307.8	130.7	35.75
242.0	000.0832	0175.6	013.1	066.7	005.9000	0308.5	131.1	35.69
243.0	000.0873	0155.3	012.4	066.5	005.9000	0309.4	131.7	35.57
244.0	000.0913	0137.3	011.7	066.4	005.9000	0310.2	132.4	35.45
245.0	000.0956	0120.6	011.1	066.3	005.9000	0310.9	133.0	35.34
246.0	000.1001	0104.9	010.6	066.2	005.9000	0311.5	133.6	35.24
247.0	000.1050	0092.0	010.0	066.1	005.9000	0311.9	134.1	35.13
248.0	000.1099	0078.8	009.4	066.1	005.9000	0312.2	134.7	35.01
249.0	000.1150	0071.3	009.0	066.0	005.9000	0312.5	135.1	34.94
250.0	000.1206	0075.8	009.4	065.9	005.9000	0312.8	134.7	35.03
251.0	000.1262	0103.2	011.1	065.8	005.9000	0313.2	133.1	35.38
252.0	000.1320	0156.9	013.8	065.6	005.9000	0313.7	130.4	35.98
253.0	000.1383	0202.8	015.9	065.4	005.9000	0314.9	128.3	36.47
254.0	000.1447	0235.2	017.5	065.2	005.9000	0317.6	126.8	36.87
255.0	000.1517	0255.8	018.5	065.0	005.9000	0321.6	125.9	37.19
256.0	000.1588	0269.0	019.1	064.8	005.9000	0325.8	125.2	37.47
257.0	000.1660	0270.7	019.4	064.6	005.9000	0328.9	125.0	37.62
258.0	000.1738	0259.3	019.2	064.5	005.9000	0331.1	125.3	37.64
259.0	000.1822	0258.5	019.4	064.3	005.9000	0333.7	125.2	37.76
260.0	000.1909	0264.3	019.9	064.1	005.9000	0336.6	124.8	37.94
261.0	000.1963	0263.2	020.0	063.9	005.9000	0338.8	124.8	38.02
262.0	000.2018	0251.2	019.7	063.8	005.9000	0340.2	125.2	37.97
263.0	000.2078	0239.7	019.3	063.7	005.9000	0341.5	125.6	37.93
264.0	000.2135	0229.2	019.0	063.6	005.9000	0342.8	126.0	37.89
265.0	000.2192	0222.1	018.9	063.5	005.9000	0344.3	126.3	37.88
266.0	000.2250	0213.6	018.6	063.4	005.9000	0345.7	126.6	37.84
267.0	000.2250	0214.9	018.7	063.3	005.9000	0347.5	126.7	37.89
268.0	000.2250	0215.4	018.7	063.1	005.9000	0349.1	126.8	37.92
269.0	000.2250	0219.0	018.9	063.0	005.9000	0350.8	126.8	37.99
270.0	000.2250	0221.5	019.0	062.8	005.9000	0352.5	126.8	38.03
271.0	000.2250	0220.4	018.9	062.7	005.9000	0353.6	127.0	38.03
272.0	000.2250	0215.9	018.7	062.6	005.9000	0354.4	127.4	37.98
273.0	000.2250	0216.4	018.8	062.5	005.9000	0355.5	127.5	37.98

Azimuth (degrees)	ERP (kW)	HAAT (m)	Dist (km)		Azimuth (degrees)	ERP (kW)	HAAT (m)	Dist (km)	Actual (dBu)
274.0	000.2250	0215.7	018.7		062.3	005.9000	0356.5	127.7	37.97
275.0	000.2250	0216.5	018.8		062.2	005.9000	0357.5	127.8	37.97
276.0	000.2250	0217.6	018.8		062.1	005.9000	0358.5	128.0	37.97
277.0	000.2250	0219.4	018.9		061.9	005.9000	0359.6	128.1	37.98
278.0	000.2250	0213.8	018.6		061.9	005.9000	0360.1	128.5	37.91
279.0	000.2250	0213.1	018.6		061.8	005.9000	0361.2	128.7	37.89
280.0	000.2250	0213.0	018.6		061.6	005.9000	0362.4	128.9	37.89
281.0	000.2250	0211.3	018.5		061.6	005.9000	0363.4	129.1	37.85
282.0	000.2250	0208.7	018.4		061.5	005.9000	0364.2	129.4	37.81
283.0	000.2250	0205.9	018.3		061.4	005.9000	0364.8	129.7	37.76
284.0	000.2250	0202.1	018.1		061.3	005.9000	0365.3	130.1	37.69
285.0	000.2250	0201.6	018.1		061.2	005.9000	0366.0	130.3	37.66
286.0	000.2250	0203.5	018.2		061.1	005.9000	0366.8	130.4	37.64
287.0	000.2250	0205.7	018.3		061.0	005.9000	0367.6	130.6	37.63
288.0	000.2250	0209.9	018.5		060.8	005.9000	0368.7	130.7	37.64
289.0	000.2250	0211.0	018.5		060.7	005.9000	0369.7	130.9	37.62
290.0	000.2250	0211.6	018.5		060.6	005.9000	0370.4	131.1	37.59
291.0	000.2250	0211.9	018.6		060.5	005.9000	0371.1	131.4	37.55
292.0	000.2250	0212.5	018.6		060.4	005.9000	0371.7	131.6	37.51
293.0	000.2250	0212.9	018.6		060.3	005.9000	0372.2	131.8	37.47
294.0	000.2250	0214.7	018.7		060.2	005.9000	0372.8	132.0	37.43
295.0	000.2250	0213.9	018.6		060.1	005.9000	0373.2	132.3	37.38
296.0	000.2250	0215.5	018.7		060.0	005.9000	0373.8	132.5	37.34
297.0	000.2250	0211.3	018.5		060.0	005.9000	0373.9	132.9	37.25
298.0	000.2250	0207.7	018.4		060.0	005.9000	0374.0	133.3	37.16
299.0	000.2250	0204.9	018.3		060.0	005.9000	0374.1	133.6	37.08
300.0	000.2250	0203.8	018.2		059.9	005.9000	0374.4	133.9	37.02
301.0	000.2250	0200.4	018.1		059.9	005.9000	0374.5	134.3	36.93
302.0	000.2250	0201.4	018.1		059.8	005.9000	0374.9	134.5	36.88
303.0	000.2250	0202.6	018.2		059.7	005.9000	0375.3	134.8	36.83
304.0	000.2250	0203.2	018.2		059.7	005.9000	0375.7	135.0	36.77
305.0	000.2250	0206.1	018.3		059.6	005.9000	0376.4	135.3	36.74
306.0	000.2250	0210.4	018.5		059.4	005.9000	0377.3	135.5	36.71

11-30-2016

Terrain Data: NED 03 SEC

FMOver Analysis

WITF-FM BMLD20040130ADW

WWPJ

Channel = 208B

Max ERP = 5.9 kW

RCAMSL = 599 m

N. Lat. 40 20 44.0

W. Lng. 76 52 07.0

Protected

60 dBu

Channel = 208A

Max ERP = 0.225 kW

RCAMSL = 473 m

N. Lat. 40 51 33.8

W. Lng. 75 18 04.4

Interfering

40 dBu

Azimuth (degrees)	ERP (kW)	HAAT (m)	Dist (km)	Azimuth (degrees)	ERP (kW)	HAAT (m)	Dist (km)	Actual (dBu)	IX (km)
006.0	005.9000	0365.9	049.4	266.9	000.2250	0214.4	127.0	20.20	
007.0	005.9000	0364.3	049.3	266.8	000.2250	0214.0	126.1	20.35	
008.0	005.9000	0363.5	049.2	266.7	000.2250	0213.8	125.3	20.51	
009.0	005.9000	0363.7	049.3	266.6	000.2250	0213.6	124.5	20.67	
010.0	005.9000	0362.6	049.2	266.5	000.2250	0213.3	123.6	20.83	
011.0	005.9000	0363.7	049.3	266.4	000.2250	0213.1	122.8	20.99	
012.0	005.9000	0365.3	049.4	266.3	000.2250	0212.9	121.9	21.16	
013.0	005.9000	0366.3	049.4	266.2	000.2250	0212.9	121.1	21.33	
014.0	005.9000	0364.3	049.3	266.0	000.2250	0213.5	120.3	21.51	
015.0	005.9000	0362.4	049.2	265.8	000.2241	0214.9	119.5	21.68	
016.0	005.9000	0362.4	049.2	265.7	000.2232	0216.1	118.7	21.86	
017.0	005.9000	0362.0	049.2	265.5	000.2223	0217.5	118.0	22.03	
018.0	005.9000	0361.7	049.1	265.4	000.2213	0218.8	117.2	22.21	
019.0	005.9000	0361.0	049.1	265.2	000.2202	0220.6	116.4	22.40	
020.0	005.9000	0359.6	049.0	264.9	000.2189	0222.5	115.7	22.58	
021.0	005.9000	0357.8	048.9	264.7	000.2175	0224.2	115.0	22.75	
022.0	005.9000	0359.3	049.0	264.5	000.2166	0225.2	114.2	22.93	
023.0	005.9000	0358.0	048.9	264.3	000.2152	0226.6	113.5	23.09	
024.0	005.9000	0353.7	048.7	264.0	000.2133	0229.5	112.9	23.27	
025.0	005.9000	0351.0	048.5	263.7	000.2116	0233.5	112.2	23.48	
026.0	005.9000	0348.0	048.3	263.4	000.2098	0237.0	111.6	23.68	
027.0	005.9000	0343.6	048.0	263.0	000.2078	0239.8	111.1	23.85	
028.0	005.9000	0341.0	047.9	262.7	000.2058	0243.0	110.5	24.04	
029.0	005.9000	0340.7	047.8	262.4	000.2042	0246.3	109.8	24.26	
030.0	005.9000	0340.3	047.8	262.1	000.2025	0249.6	109.2	24.48	
031.0	005.9000	0338.0	047.7	261.8	000.2006	0254.1	108.6	24.70	
032.0	005.9000	0336.9	047.6	261.5	000.1989	0258.6	108.1	24.95	
033.0	005.9000	0336.8	047.6	261.2	000.1972	0262.0	107.4	25.18	
034.0	005.9000	0337.7	047.7	260.9	000.1957	0263.6	106.8	25.37	
035.0	005.9000	0340.5	047.8	260.6	000.1943	0264.3	106.1	25.56	
036.0	005.9000	0338.3	047.7	260.3	000.1923	0264.6	105.6	25.65	
037.0	005.9000	0331.5	047.3	259.8	000.1889	0263.5	105.4	25.62	
038.0	005.9000	0324.5	046.8	259.3	000.1847	0260.3	105.2	25.49	

Azimuth (degrees)	ERP (kW)	HAAT (m)	Dist (km)	Azimuth (degrees)	ERP (kW)	HAAT (m)	Dist (km)	Actual (dBu)
039.0	005.9000	0316.8	046.4	258.8	000.1803	0257.3	105.0	25.34
040.0	005.9000	0307.7	045.8	258.2	000.1758	0258.0	105.0	25.26
041.0	005.9000	0299.6	045.3	257.7	000.1717	0261.4	104.9	25.28
042.0	005.9000	0295.5	045.0	257.3	000.1683	0267.3	104.6	25.44
043.0	005.9000	0296.5	045.1	257.0	000.1657	0271.1	104.1	25.63
044.0	005.9000	0305.3	045.7	256.7	000.1642	0272.6	103.3	25.89
045.0	005.9000	0319.4	046.5	256.6	000.1632	0272.8	102.1	26.22
046.0	005.9000	0330.9	047.2	256.4	000.1618	0272.4	101.1	26.48
047.0	005.9000	0342.6	048.0	256.2	000.1602	0270.9	100.0	26.71
048.0	005.9000	0358.2	048.9	256.0	000.1590	0269.2	098.8	27.01
049.0	005.9000	0371.1	049.7	255.8	000.1571	0266.4	097.7	27.20
050.0	005.9000	0377.0	050.0	255.4	000.1544	0261.2	097.1	27.17
051.0	005.9000	0375.3	049.9	254.9	000.1509	0254.5	096.8	26.95
052.0	005.9000	0366.8	049.4	254.3	000.1469	0243.5	096.9	26.45
053.0	005.9000	0357.6	048.9	253.7	000.1430	0227.2	097.1	25.74
054.0	005.9000	0354.3	048.7	253.2	000.1397	0210.4	097.0	25.09
055.0	005.9000	0367.6	049.5	252.9	000.1375	0197.8	096.0	24.88
056.0	005.9000	0375.8	050.0	252.4	000.1348	0180.0	095.3	24.34
057.0	005.9000	0379.8	050.2	252.0	000.1319	0155.4	094.9	23.45
058.0	005.9000	0382.5	050.3	251.5	000.1290	0127.3	094.6	22.35
059.0	005.9000	0380.4	050.2	250.9	000.1259	0100.8	094.5	21.16
060.0	005.9000	0374.0	049.9	250.4	000.1227	0083.1	094.7	20.26
061.0	005.9000	0367.5	049.5	249.8	000.1196	0074.1	094.9	19.71
062.0	005.9000	0359.0	049.0	249.3	000.1166	0071.6	095.3	19.39
063.0	005.9000	0350.5	048.5	248.7	000.1137	0072.7	095.8	19.23
064.0	005.9000	0338.1	047.7	248.2	000.1110	0076.9	096.5	19.14
065.0	005.9000	0321.4	046.6	247.7	000.1084	0083.1	097.5	19.06
066.0	005.9000	0312.6	046.1	247.2	000.1061	0089.4	098.0	19.10
067.0	005.9000	0306.2	045.7	246.8	000.1038	0095.4	098.4	19.15
068.0	005.9000	0326.4	047.0	246.3	000.1013	0101.3	097.2	19.57
069.0	005.9000	0366.3	049.4	245.7	000.0986	0109.9	094.8	20.41
070.0	005.9000	0392.3	050.9	245.1	000.0959	0119.7	093.4	21.05
071.0	005.9000	0411.3	051.9	244.4	000.0932	0130.1	092.5	21.60
072.0	005.9000	0423.4	052.5	243.8	000.0905	0140.3	092.0	22.04
073.0	005.9000	0428.0	052.8	243.2	000.0882	0150.9	091.9	22.38
074.0	005.9000	0432.7	053.1	242.6	000.0858	0163.0	091.8	22.75
075.0	005.9000	0439.5	053.4	242.0	000.0832	0175.4	091.7	23.14
076.0	005.9000	0443.8	053.7	241.4	000.0811	0185.7	091.7	23.42
077.0	005.9000	0446.0	053.8	240.8	000.0790	0193.4	091.9	23.55
078.0	005.9000	0449.1	054.0	240.2	000.0768	0199.6	092.0	23.62
079.0	005.9000	0449.6	054.0	239.7	000.0748	0205.3	092.3	23.64
080.0	005.9000	0448.9	053.9	239.1	000.0731	0210.9	092.6	23.62
081.0	005.9000	0447.7	053.9	238.6	000.0713	0216.7	093.1	23.59
082.0	005.9000	0443.0	053.6	238.2	000.0698	0221.1	093.7	23.47
083.0	005.9000	0448.4	053.9	237.6	000.0679	0226.2	093.8	23.48
084.0	005.9000	0450.0	054.0	237.0	000.0662	0228.9	094.2	23.36
085.0	005.9000	0450.2	054.0	236.5	000.0647	0230.3	094.6	23.17
086.0	005.9000	0453.0	054.2	236.0	000.0631	0230.6	095.0	22.97
087.0	005.9000	0452.7	054.2	235.5	000.0618	0229.8	095.5	22.69
088.0	005.9000	0453.3	054.2	235.0	000.0604	0228.3	096.0	22.39
089.0	005.9000	0455.9	054.3	234.5	000.0590	0228.0	096.4	22.15

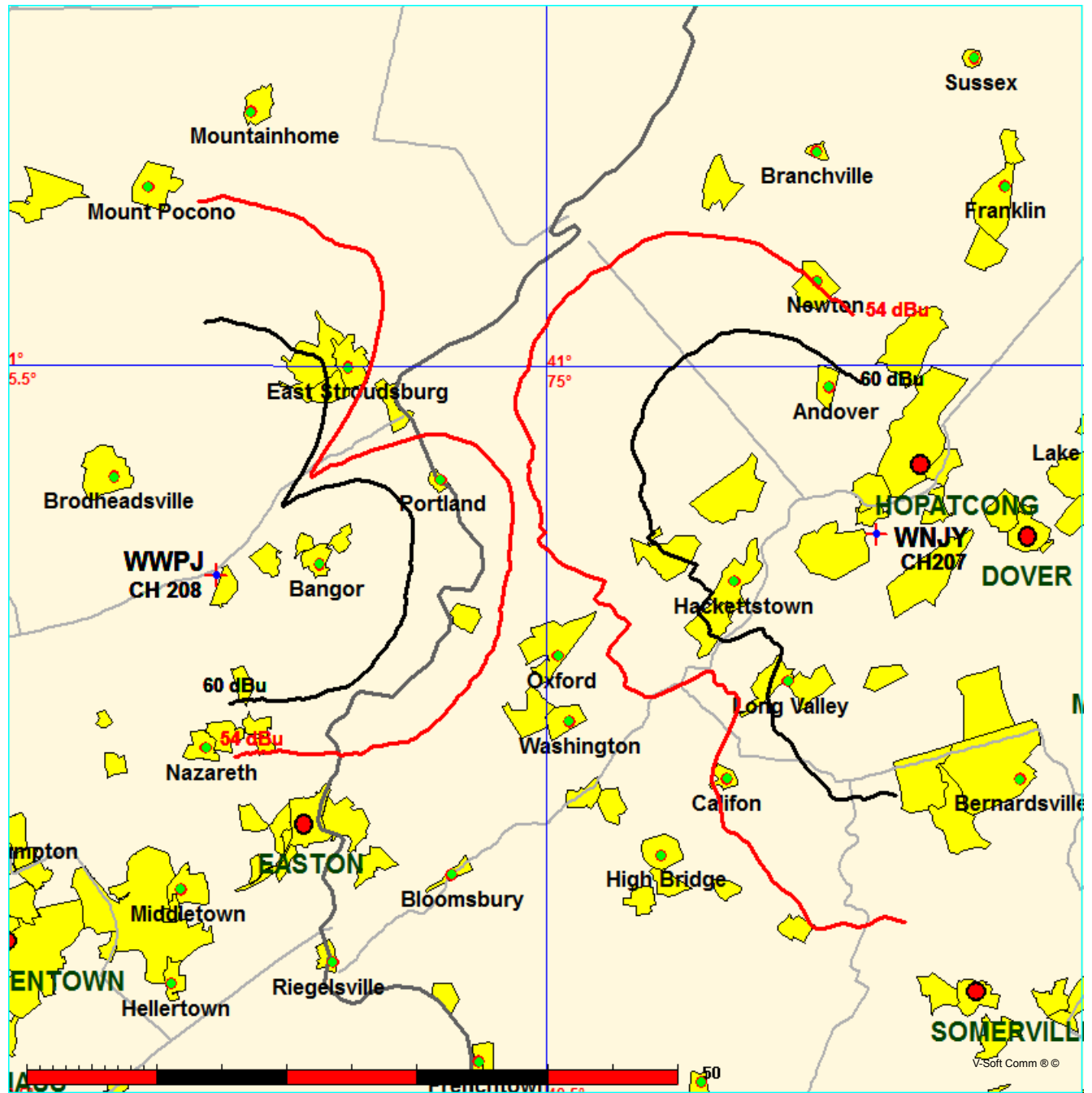
Azimuth (degrees)	ERP (kW)	HAAT (m)	Dist (km)	Azimuth (degrees)	ERP (kW)	HAAT (m)	Dist (km)	Actual (dBu)
090.0	005.9000	0455.8	054.3	234.1	000.0578	0227.9	096.9	21.88
091.0	005.9000	0455.6	054.3	233.6	000.0567	0228.0	097.5	21.62
092.0	005.9000	0454.0	054.2	233.2	000.0557	0228.3	098.2	21.35
093.0	005.9000	0453.1	054.2	232.8	000.0546	0229.2	098.9	21.11
094.0	005.9000	0454.1	054.2	232.4	000.0535	0230.4	099.4	20.88
095.0	005.9000	0454.7	054.3	232.0	000.0524	0230.8	100.1	20.62
096.0	005.9000	0453.0	054.2	231.6	000.0516	0230.5	100.8	20.32
097.0	005.9000	0453.8	054.2	231.2	000.0507	0229.9	101.5	20.03
098.0	005.9000	0454.2	054.2	230.9	000.0499	0228.8	102.1	19.73
099.0	005.9000	0454.4	054.2	230.5	000.0491	0228.1	102.8	19.44
100.0	005.9000	0452.5	054.1	230.2	000.0485	0227.9	103.6	19.15
101.0	005.9000	0452.8	054.2	229.9	000.0478	0227.7	104.4	18.88
102.0	005.9000	0452.2	054.1	229.6	000.0471	0227.3	105.1	18.59
103.0	005.9000	0452.9	054.2	229.3	000.0464	0226.7	105.9	18.31
104.0	005.9000	0453.0	054.2	229.0	000.0457	0226.0	106.7	18.02
105.0	005.9000	0454.1	054.2	228.7	000.0451	0225.2	107.4	17.74
106.0	005.9000	0453.7	054.2	228.4	000.0446	0224.4	108.2	17.45
107.0	005.9000	0453.8	054.2	228.2	000.0441	0223.8	109.0	17.18
108.0	005.9000	0455.2	054.3	227.9	000.0435	0223.4	109.8	16.92
109.0	005.9000	0454.9	054.3	227.7	000.0431	0223.2	110.7	16.66
110.0	005.9000	0456.1	054.3	227.4	000.0426	0223.2	111.5	16.42
111.0	005.9000	0455.0	054.3	227.2	000.0422	0223.4	112.4	16.19
112.0	005.9000	0455.6	054.3	227.0	000.0418	0223.8	113.2	15.97
113.0	005.9000	0458.3	054.5	226.8	000.0413	0224.5	114.0	15.75
114.0	005.9000	0457.9	054.4	226.6	000.0410	0225.2	114.9	15.54
115.0	005.9000	0456.0	054.3	226.5	000.0408	0225.7	115.8	15.32
116.0	005.9000	0455.6	054.3	226.3	000.0405	0226.3	116.7	15.11
117.0	005.9000	0456.4	054.4	226.1	000.0402	0227.1	117.6	14.91
118.0	005.9000	0457.2	054.4	226.0	000.0399	0227.9	118.5	14.71
119.0	005.9000	0457.1	054.4	225.9	000.0396	0228.6	119.4	14.50
120.0	005.9000	0459.5	054.5	225.7	000.0393	0229.7	120.3	14.31
121.0	005.9000	0460.7	054.6	225.5	000.0390	0230.6	121.2	14.11
122.0	005.9000	0462.2	054.7	225.4	000.0387	0231.4	122.1	13.92
123.0	005.9000	0465.0	054.8	225.2	000.0384	0232.3	123.0	13.72
124.0	005.9000	0465.1	054.9	225.2	000.0383	0232.8	124.0	13.52
125.0	005.9000	0463.9	054.8	225.1	000.0382	0233.0	124.9	13.33

Contour-to-Contour Map, WWPJ vs WNJY  
Town Of Monroe, Connecticut

FMCommander Single Allocation Study - 11-30-2016 - NED 03 SEC  
WWPJ's Overlaps (In= 9.63 km, Out= 9.87 km)

WWPJ CH 208 A DA  
Lat= 40 51 33.8, Lng= 75 18 04.4  
0.225 kW 230.8 m HAAT, 473 m COR  
Prot.= 60 dBu, Intef.= 54 dBu

WNJY CH 207 A DA BLED20080707AEO  
Lat= 40 53 14.0, Lng= 74 41 55.0  
0.52 kW 131 m HAAT, 385 m COR  
Prot.= 60 dBu, Intef.= 54 dBu



11-30-2016

Terrain Data: NED 03 SEC

FMOver Analysis

WWPJ

WNJY BLED20080707AEO

Channel = 208A

Max ERP = 0.225 kW

RCAMSL = 473 m

N. Lat. 40 51 33.8

W. Lng. 75 18 04.4

Protected

60 dBu

Channel = 207A

Max ERP = 0.52 kW

RCAMSL = 385 m

N. Lat. 40 53 14.0

W. Lng. 74 41 55.0

Interfering

54 dBu

Azimuth (degrees)	ERP (kW)	HAAT (m)	Dist (km)	Azimuth (degrees)	ERP (kW)	HAAT (m)	Dist (km)	Actual (dBu)	IX (km)
026.0	000.1192	0276.6	018.1	287.3	000.5200	0150.6	044.7	46.04	
027.0	000.1176	0270.7	017.8	286.9	000.5200	0148.7	044.4	46.06	
028.0	000.1160	0264.4	017.5	286.4	000.5200	0146.8	044.1	46.06	
029.0	000.1144	0257.7	017.2	286.0	000.5200	0144.8	043.9	46.06	
030.0	000.1128	0250.1	016.9	285.4	000.5200	0142.4	043.7	46.02	
031.0	000.1109	0239.5	016.4	284.7	000.5200	0139.3	043.6	45.91	
032.0	000.1090	0227.2	015.9	283.9	000.5200	0135.9	043.5	45.78	
033.0	000.1071	0213.1	015.3	283.1	000.5200	0135.3	043.4	45.77	
034.0	000.1053	0199.2	014.7	282.3	000.5200	0134.8	043.4	45.76	
035.0	000.1034	0184.8	014.1	281.4	000.5200	0136.0	043.4	45.82	
036.0	000.1013	0172.8	013.6	280.7	000.5200	0136.2	043.3	45.84	
037.0	000.0995	0158.9	013.0	279.8	000.5200	0134.9	043.4	45.73	
038.0	000.0977	0146.4	012.3	278.9	000.5200	0135.4	043.5	45.72	
039.0	000.0959	0132.2	011.6	278.0	000.5200	0133.9	043.7	45.56	
040.0	000.0942	0115.4	010.9	277.0	000.5200	0131.2	044.0	45.31	
041.0	000.0933	0097.1	010.0	275.9	000.5200	0128.1	044.3	44.99	
042.0	000.0924	0075.9	008.8	274.6	000.5200	0124.9	044.9	44.58	
043.0	000.0916	0063.1	008.0	273.7	000.5200	0123.1	045.3	44.32	
044.0	000.0907	0052.9	007.3	272.9	000.5200	0122.4	045.6	44.13	
045.0	000.0899	0050.6	007.1	272.6	000.5200	0122.2	045.7	44.11	
046.0	000.0887	0059.2	007.7	273.0	000.5200	0122.4	045.2	44.32	
047.0	000.0879	0072.3	008.5	273.6	000.5200	0123.1	044.5	44.63	
048.0	000.0870	0075.7	008.7	273.7	000.5200	0123.1	044.3	44.73	
049.0	000.0862	0082.8	009.1	273.9	000.5200	0123.3	043.9	44.90	
050.0	000.0854	0096.5	009.8	274.4	000.5200	0124.4	043.3	45.22	
051.0	000.0845	0103.9	010.1	274.5	000.5200	0124.7	042.9	45.39	
052.0	000.0837	0115.8	010.6	274.8	000.5200	0124.8	042.4	45.60	
053.0	000.0826	0125.8	011.0	274.9	000.5200	0125.0	042.0	45.79	
054.0	000.0818	0135.5	011.3	275.1	000.5200	0125.2	041.6	45.98	
055.0	000.0810	0148.1	011.9	275.3	000.5200	0125.5	041.1	46.23	
056.0	000.0802	0162.1	012.4	275.6	000.5200	0126.6	040.5	46.54	
057.0	000.0794	0174.8	012.9	275.8	000.5200	0127.4	040.0	46.81	
058.0	000.0783	0186.4	013.2	275.8	000.5200	0127.6	039.6	47.01	
059.0	000.0775	0196.6	013.5	275.8	000.5200	0127.5	039.2	47.17	
060.0	000.0767	0203.6	013.7	275.7	000.5200	0127.0	038.9	47.28	
061.0	000.0765	0210.2	013.9	275.6	000.5200	0126.4	038.6	47.38	

Azimuth (degrees)	ERP (kW)	HAAT (m)	Dist (km)	Azimuth (degrees)	ERP (kW)	HAAT (m)	Dist (km)	Actual (dBu)
062.0	000.0762	0217.8	014.2	275.5	000.5200	0125.9	038.3	47.50
063.0	000.0762	0224.8	014.4	275.3	000.5200	0125.5	038.0	47.62
064.0	000.0760	0231.4	014.6	275.1	000.5200	0125.3	037.7	47.74
065.0	000.0757	0236.8	014.7	274.9	000.5200	0125.0	037.4	47.85
066.0	000.0754	0241.1	014.9	274.7	000.5200	0124.9	037.2	47.95
067.0	000.0752	0244.3	014.9	274.4	000.5200	0124.4	037.0	48.01
068.0	000.0752	0247.0	015.0	274.1	000.5200	0123.8	036.8	48.06
069.0	000.0749	0249.4	015.1	273.7	000.5200	0123.1	036.6	48.10
070.0	000.0746	0255.2	015.3	273.5	000.5200	0122.7	036.4	48.20
071.0	000.0741	0260.0	015.4	273.2	000.5200	0122.5	036.2	48.29
072.0	000.0736	0264.0	015.5	272.8	000.5200	0122.4	036.0	48.37
073.0	000.0731	0267.2	015.6	272.4	000.5200	0122.1	035.8	48.42
074.0	000.0726	0268.8	015.6	272.0	000.5200	0122.3	035.7	48.49
075.0	000.0721	0268.5	015.5	271.6	000.5200	0122.1	035.7	48.49
076.0	000.0718	0268.1	015.5	271.2	000.5200	0122.7	035.6	48.56
077.0	000.0713	0267.8	015.5	270.7	000.5200	0122.1	035.6	48.53
078.0	000.0708	0266.3	015.4	270.3	000.5200	0119.9	035.6	48.39
079.0	000.0703	0266.2	015.4	269.9	000.5171	0118.0	035.6	48.25
080.0	000.0698	0265.6	015.3	269.4	000.5087	0121.1	035.6	48.38
081.0	000.0688	0264.1	015.2	269.0	000.5001	0127.1	035.6	48.64
082.0	000.0678	0263.4	015.1	268.5	000.4918	0128.7	035.7	48.64
083.0	000.0666	0264.0	015.1	268.1	000.4837	0127.9	035.7	48.51
084.0	000.0656	0264.6	015.0	267.7	000.4757	0126.2	035.7	48.33
085.0	000.0646	0264.8	015.0	267.3	000.4679	0124.3	035.8	48.12
086.0	000.0637	0265.2	014.9	266.8	000.4602	0123.2	035.8	47.96
087.0	000.0627	0265.4	014.9	266.4	000.4526	0122.7	035.9	47.83
088.0	000.0615	0270.5	015.0	266.0	000.4450	0123.0	035.8	47.81
089.0	000.0606	0271.9	015.0	265.6	000.4376	0123.8	035.8	47.77
090.0	000.0597	0269.2	014.8	265.2	000.4305	0123.8	036.0	47.63
091.0	000.0590	0269.1	014.8	264.8	000.4234	0122.6	036.0	47.45
092.0	000.0583	0268.9	014.7	264.4	000.4165	0120.9	036.1	47.23
093.0	000.0574	0269.1	014.7	264.0	000.4098	0119.1	036.2	47.00
094.0	000.0567	0270.4	014.7	263.6	000.4029	0117.1	036.3	46.77
095.0	000.0560	0269.8	014.6	263.2	000.3965	0115.2	036.4	46.53
096.0	000.0554	0272.4	014.6	262.8	000.3897	0113.7	036.4	46.33
097.0	000.0547	0270.5	014.5	262.5	000.3839	0112.6	036.6	46.11
098.0	000.0538	0277.5	014.7	262.0	000.3764	0111.3	036.5	45.96
099.0	000.0531	0280.8	014.7	261.6	000.3697	0109.4	036.5	45.73
100.0	000.0525	0282.3	014.7	261.2	000.3635	0107.1	036.6	45.44
101.0	000.0516	0283.2	014.7	260.9	000.3577	0105.1	036.7	45.15
102.0	000.0510	0286.5	014.7	260.5	000.3513	0102.8	036.8	44.86
103.0	000.0501	0287.7	014.7	260.1	000.3457	0101.8	036.9	44.65
104.0	000.0495	0288.7	014.7	259.8	000.3408	0102.4	037.0	44.58
105.0	000.0487	0290.0	014.7	259.4	000.3365	0103.9	037.2	44.59
106.0	000.0478	0289.5	014.6	259.1	000.3327	0105.7	037.3	44.60
107.0	000.0472	0288.7	014.5	258.8	000.3290	0107.1	037.5	44.59
108.0	000.0464	0291.1	014.5	258.5	000.3248	0108.7	037.6	44.60
109.0	000.0458	0289.2	014.4	258.3	000.3216	0109.6	037.9	44.53
110.0	000.0450	0291.1	014.4	257.9	000.3177	0110.9	038.0	44.52
111.0	000.0438	0293.0	014.4	257.7	000.3143	0113.3	038.2	44.56
112.0	000.0426	0290.3	014.2	257.5	000.3122	0114.9	038.5	44.52

Azimuth (degrees)	ERP (kW)	HAAT (m)	Dist (km)	Azimuth (degrees)	ERP (kW)	HAAT (m)	Dist (km)	Actual (dBu)
113.0	000.0416	0292.1	014.2	257.2	000.3089	0116.8	038.6	44.53
114.0	000.0404	0298.4	014.2	256.9	000.3048	0118.8	038.7	44.55
115.0	000.0393	0298.1	014.1	256.7	000.3025	0119.6	039.0	44.46
116.0	000.0382	0297.5	014.0	256.5	000.3004	0120.0	039.2	44.35
117.0	000.0371	0297.8	013.9	256.3	000.2982	0119.9	039.4	44.21
118.0	000.0362	0300.7	013.9	256.1	000.2952	0118.8	039.6	44.02
119.0	000.0351	0304.0	013.9	255.9	000.2925	0117.1	039.8	43.79
120.0	000.0340	0306.3	013.8	255.7	000.2902	0115.6	040.0	43.56
121.0	000.0334	0310.8	013.8	255.4	000.2870	0113.8	040.2	43.33
122.0	000.0327	0312.6	013.8	255.2	000.2846	0113.0	040.4	43.15
123.0	000.0318	0311.8	013.7	255.1	000.2833	0112.6	040.6	42.99
124.0	000.0311	0312.2	013.6	254.9	000.2815	0112.1	040.8	42.84
125.0	000.0305	0312.9	013.6	254.8	000.2797	0111.7	041.0	42.69
126.0	000.0298	0316.2	013.6	254.6	000.2773	0111.2	041.2	42.54
127.0	000.0292	0314.4	013.5	254.5	000.2764	0111.2	041.5	42.42
128.0	000.0284	0314.4	013.4	254.4	000.2754	0111.3	041.7	42.30
129.0	000.0277	0317.0	013.4	254.2	000.2735	0111.8	041.9	42.22
130.0	000.0271	0315.6	013.3	254.2	000.2727	0112.0	042.2	42.12
131.0	000.0262	0316.0	013.2	254.1	000.2721	0112.2	042.4	42.02
132.0	000.0253	0312.5	013.0	254.2	000.2726	0112.1	042.7	41.90
133.0	000.0244	0310.0	012.8	254.2	000.2729	0112.0	043.0	41.78
134.0	000.0235	0308.6	012.7	254.2	000.2731	0111.9	043.3	41.67
135.0	000.0226	0306.3	012.5	254.2	000.2735	0111.8	043.5	41.56
136.0	000.0218	0306.3	012.4	254.2	000.2735	0111.8	043.8	41.46
137.0	000.0209	0305.7	012.3	254.2	000.2737	0111.8	044.0	41.35
138.0	000.0201	0307.7	012.2	254.2	000.2733	0111.9	044.2	41.26
139.0	000.0193	0312.1	012.2	254.1	000.2725	0112.1	044.5	41.18
140.0	000.0185	0319.6	012.2	254.0	000.2710	0112.6	044.6	41.12
141.0	000.0180	0319.9	012.1	254.0	000.2709	0112.7	044.9	41.03
142.0	000.0176	0315.3	011.9	254.1	000.2717	0112.4	045.1	40.92
143.0	000.0171	0313.5	011.8	254.1	000.2722	0112.2	045.4	40.82
144.0	000.0168	0312.5	011.8	254.1	000.2722	0112.2	045.6	40.73
145.0	000.0163	0312.4	011.7	254.1	000.2724	0112.1	045.8	40.64

11-30-2016

Terrain Data: NED 03 SEC

FMOver Analysis

WNJY BLED20080707AEO

WWPJ

Channel = 207A

Max ERP = 0.52 kW

RCAMSL = 385 m

N. Lat. 40 53 14.0

W. Lng. 74 41 55.0

Protected

60 dBu

Channel = 208A

Max ERP = 0.225 kW

RCAMSL = 473 m

N. Lat. 40 51 33.8

W. Lng. 75 18 04.4

Interfering

54 dBu

Azimuth (degrees)	ERP (kW)	HAAT (m)	Dist (km)	Azimuth (degrees)	ERP (kW)	HAAT (m)	Dist (km)	Actual (dBu)	IX (km)
207.0	000.3928	0136.6	017.1	105.6	000.0482	0289.9	044.6	41.55	
208.0	000.3761	0137.5	016.9	105.3	000.0484	0290.1	044.4	41.68	
209.0	000.3597	0135.0	016.5	104.8	000.0488	0289.7	044.2	41.80	
210.0	000.3437	0131.4	016.1	104.1	000.0494	0288.8	044.0	41.89	
211.0	000.3429	0127.0	015.8	103.6	000.0498	0288.0	043.9	41.97	
212.0	000.3422	0123.0	015.5	103.1	000.0500	0287.7	043.7	42.05	
213.0	000.3414	0119.9	015.3	102.8	000.0503	0287.9	043.5	42.17	
214.0	000.3407	0117.1	015.1	102.4	000.0506	0287.8	043.3	42.27	
215.0	000.3399	0110.4	014.6	101.7	000.0512	0284.9	043.3	42.25	
216.0	000.3392	0099.7	013.8	100.6	000.0519	0282.7	043.3	42.21	
217.0	000.3384	0085.4	012.8	099.3	000.0530	0281.3	043.6	42.14	
218.0	000.3376	0075.9	012.1	098.3	000.0536	0278.7	043.7	42.06	
219.0	000.3369	0069.7	011.7	097.7	000.0541	0275.5	043.8	41.97	
220.0	000.3361	0067.1	011.5	097.3	000.0544	0272.4	043.7	41.93	
221.0	000.3338	0066.4	011.4	097.1	000.0546	0270.9	043.6	41.95	
222.0	000.3315	0066.4	011.4	096.9	000.0547	0270.4	043.4	42.01	
223.0	000.3291	0068.8	011.5	097.0	000.0547	0270.4	043.2	42.12	
224.0	000.3268	0069.7	011.6	096.9	000.0548	0270.2	043.0	42.21	
225.0	000.3245	0068.3	011.5	096.6	000.0550	0270.7	042.9	42.27	
226.0	000.3222	0069.0	011.5	096.4	000.0551	0271.2	042.7	42.37	
227.0	000.3199	0071.2	011.6	096.4	000.0551	0271.3	042.5	42.48	
228.0	000.3177	0071.3	011.6	096.2	000.0552	0271.9	042.3	42.58	
229.0	000.3154	0070.0	011.5	095.9	000.0554	0272.5	042.2	42.64	
230.0	000.3131	0068.6	011.4	095.6	000.0556	0272.4	042.2	42.68	
231.0	000.3004	0073.2	011.6	095.6	000.0556	0272.5	041.9	42.82	
232.0	000.2880	0084.4	012.3	096.1	000.0553	0272.3	041.3	43.06	
233.0	000.2758	0099.1	013.1	096.7	000.0549	0270.4	040.5	43.31	
234.0	000.2639	0115.3	014.0	097.3	000.0544	0272.0	039.7	43.68	
235.0	000.2523	0125.3	014.4	097.4	000.0543	0273.3	039.2	43.92	
236.0	000.2409	0129.7	014.5	097.2	000.0545	0271.7	039.0	43.99	
237.0	000.2297	0135.1	014.6	097.1	000.0546	0270.8	038.7	44.10	
238.0	000.2189	0141.8	014.8	097.0	000.0547	0270.5	038.4	44.24	
239.0	000.2083	0148.1	015.0	096.9	000.0548	0270.2	038.1	44.38	

Azimuth (degrees)	ERP (kW)	HAAT (m)	Dist (km)	Azimuth (degrees)	ERP (kW)	HAAT (m)	Dist (km)	Actual (dBu)
240.0	000.1980	0148.1	014.8	096.4	000.0551	0271.4	038.1	44.45
241.0	000.2008	0145.5	014.7	096.0	000.0554	0272.4	038.0	44.53
242.0	000.2036	0144.7	014.7	095.7	000.0556	0272.6	037.9	44.62
243.0	000.2065	0143.4	014.7	095.3	000.0558	0271.4	037.8	44.66
244.0	000.2094	0144.8	014.8	095.1	000.0560	0270.4	037.5	44.76
245.0	000.2123	0146.5	015.0	094.9	000.0561	0269.0	037.2	44.85
246.0	000.2153	0145.8	015.0	094.5	000.0563	0268.7	037.1	44.92
247.0	000.2182	0141.1	014.8	094.0	000.0567	0270.4	037.2	44.97
248.0	000.2212	0132.1	014.3	093.3	000.0572	0270.0	037.5	44.85
249.0	000.2242	0121.8	013.8	092.7	000.0577	0268.5	037.9	44.67
250.0	000.2272	0114.6	013.4	092.1	000.0582	0268.6	038.1	44.60
251.0	000.2378	0113.8	013.5	091.9	000.0584	0269.2	037.9	44.72
252.0	000.2486	0115.6	013.8	091.7	000.0585	0269.3	037.6	44.89
253.0	000.2596	0115.3	013.9	091.4	000.0587	0269.4	037.4	45.00
254.0	000.2709	0112.7	013.9	091.0	000.0590	0269.1	037.3	45.04
255.0	000.2824	0112.4	014.1	090.7	000.0592	0268.8	037.1	45.14
256.0	000.2942	0118.3	014.6	090.6	000.0593	0268.7	036.5	45.41
257.0	000.3062	0118.1	014.7	090.2	000.0595	0268.9	036.3	45.54
258.0	000.3185	0110.5	014.4	089.7	000.0599	0269.5	036.6	45.45
259.0	000.3310	0106.4	014.2	089.3	000.0603	0271.0	036.7	45.49
260.0	000.3437	0101.9	014.0	088.9	000.0607	0272.1	036.8	45.48
261.0	000.3597	0105.7	014.5	088.6	000.0610	0272.2	036.4	45.73
262.0	000.3761	0111.2	015.1	088.3	000.0613	0271.9	035.8	46.03
263.0	000.3928	0114.3	015.5	087.9	000.0616	0270.2	035.3	46.21
264.0	000.4099	0119.1	016.0	087.6	000.0621	0268.1	034.8	46.45
265.0	000.4273	0123.3	016.5	087.1	000.0626	0266.0	034.2	46.67
266.0	000.4451	0123.0	016.7	086.7	000.0631	0264.9	034.1	46.76
267.0	000.4633	0123.6	016.9	086.2	000.0635	0265.0	033.8	46.91
268.0	000.4818	0127.6	017.4	085.6	000.0640	0265.2	033.4	47.18
269.0	000.5007	0126.9	017.5	085.1	000.0645	0264.9	033.2	47.26
270.0	000.5200	0118.6	017.1	084.6	000.0650	0264.5	033.7	47.06
271.0	000.5200	0122.7	017.4	084.1	000.0655	0264.6	033.4	47.23
272.0	000.5200	0122.3	017.4	083.6	000.0660	0264.3	033.5	47.22
273.0	000.5200	0122.4	017.4	083.0	000.0665	0264.0	033.5	47.23
274.0	000.5200	0123.6	017.5	082.5	000.0672	0263.9	033.5	47.28
275.0	000.5200	0125.1	017.6	082.0	000.0679	0263.4	033.4	47.33
276.0	000.5200	0128.3	017.8	081.3	000.0685	0264.1	033.3	47.46
277.0	000.5200	0131.2	018.0	080.7	000.0691	0264.5	033.2	47.57
278.0	000.5200	0133.9	018.2	080.1	000.0697	0265.6	033.1	47.69
279.0	000.5200	0135.5	018.3	079.5	000.0700	0265.6	033.1	47.72
280.0	000.5200	0135.1	018.3	079.0	000.0703	0266.2	033.2	47.69
281.0	000.5200	0136.5	018.4	078.4	000.0706	0266.3	033.2	47.70
282.0	000.5200	0134.7	018.3	078.0	000.0708	0266.3	033.5	47.59
283.0	000.5200	0135.4	018.3	077.5	000.0711	0267.2	033.6	47.59
284.0	000.5200	0136.1	018.4	077.0	000.0713	0267.9	033.7	47.58
285.0	000.5200	0140.6	018.7	076.2	000.0717	0268.1	033.5	47.68
286.0	000.5200	0145.1	019.0	075.5	000.0720	0268.4	033.4	47.76
287.0	000.5200	0149.4	019.3	074.7	000.0722	0268.7	033.3	47.82
288.0	000.5200	0153.6	019.6	074.0	000.0726	0268.8	033.3	47.87
289.0	000.5200	0157.1	019.8	073.3	000.0730	0267.7	033.3	47.85
290.0	000.5200	0159.4	019.9	072.6	000.0733	0266.6	033.4	47.80

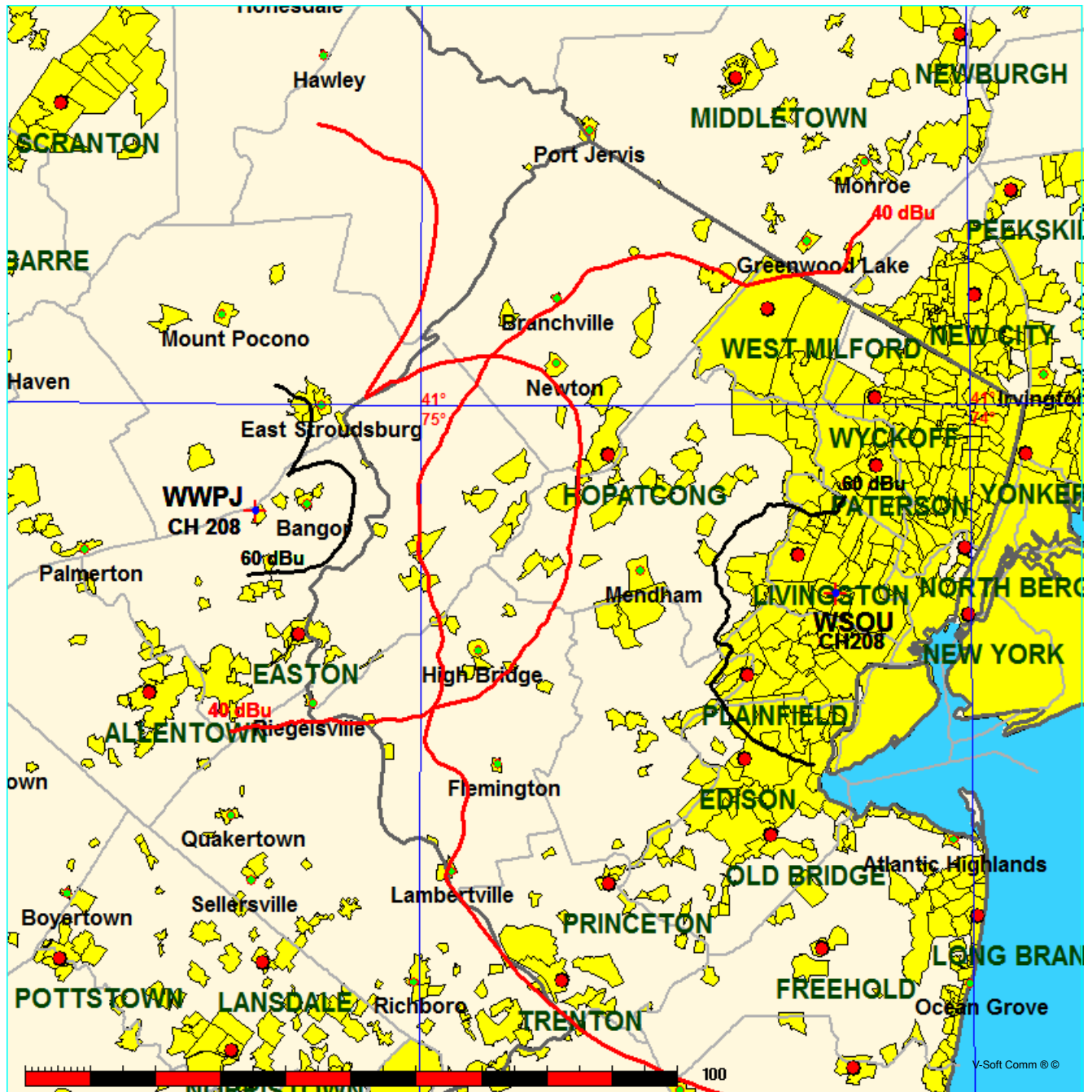
Azimuth (degrees)	ERP (kW)	HAAT (m)	Dist (km)		Azimuth (degrees)	ERP (kW)	HAAT (m)	Dist (km)	Actual (dBu)
291.0	000.5200	0160.5	020.0		072.1	000.0736	0264.4	033.5	47.66
292.0	000.5200	0160.8	020.0		071.6	000.0738	0262.5	033.7	47.51
293.0	000.5200	0161.3	020.1		071.1	000.0741	0260.5	034.0	47.36
294.0	000.5200	0160.2	020.0		070.8	000.0742	0259.1	034.2	47.19
295.0	000.5200	0159.2	019.9		070.4	000.0744	0257.5	034.5	47.01
296.0	000.5200	0160.4	020.0		069.9	000.0747	0254.8	034.7	46.84
297.0	000.5200	0161.9	020.1		069.4	000.0748	0251.3	034.9	46.64
298.0	000.5200	0163.4	020.2		068.9	000.0749	0249.1	035.1	46.48
299.0	000.5200	0163.8	020.2		068.5	000.0750	0248.3	035.4	46.34
300.0	000.5200	0164.4	020.3		068.1	000.0751	0247.4	035.6	46.19
301.0	000.5200	0163.1	020.2		067.9	000.0752	0246.6	035.9	46.01
302.0	000.5200	0162.6	020.1		067.6	000.0752	0245.7	036.2	45.83
303.0	000.5200	0163.5	020.2		067.2	000.0752	0244.7	036.5	45.68
304.0	000.5200	0164.3	020.2		066.8	000.0752	0243.9	036.8	45.52
305.0	000.5200	0163.2	020.2		066.6	000.0753	0243.2	037.1	45.35
306.0	000.5200	0162.4	020.1		066.4	000.0753	0242.5	037.4	45.17
307.0	000.5200	0162.6	020.1		066.1	000.0754	0241.4	037.7	45.00
308.0	000.5200	0160.8	020.0		066.0	000.0754	0241.1	038.1	44.82
309.0	000.5200	0159.0	019.9		065.9	000.0755	0240.8	038.4	44.64
310.0	000.5200	0158.7	019.9		065.7	000.0755	0240.1	038.8	44.47
311.0	000.5074	0160.4	019.9		065.5	000.0756	0239.2	039.1	44.30
312.0	000.4949	0161.6	019.8		065.3	000.0756	0238.5	039.4	44.12
313.0	000.4826	0161.9	019.7		065.3	000.0756	0238.3	039.8	43.94
314.0	000.4705	0160.1	019.5		065.4	000.0756	0238.8	040.2	43.78
315.0	000.4585	0160.5	019.4		065.4	000.0756	0238.6	040.5	43.61
316.0	000.4467	0163.4	019.5		065.1	000.0757	0237.5	040.8	43.43
317.0	000.4350	0165.1	019.4		065.0	000.0757	0236.8	041.2	43.26
318.0	000.4234	0165.2	019.3		065.0	000.0757	0236.9	041.5	43.10
319.0	000.4121	0165.9	019.2		065.0	000.0757	0236.8	041.9	42.95
320.0	000.4009	0167.9	019.2		064.9	000.0757	0236.3	042.2	42.78
321.0	000.3846	0171.8	019.2		064.8	000.0758	0235.7	042.5	42.62
322.0	000.3687	0173.5	019.1		064.8	000.0757	0235.9	042.9	42.47
323.0	000.3531	0173.5	018.9		065.0	000.0757	0236.6	043.2	42.34
324.0	000.3378	0175.4	018.8		065.0	000.0757	0236.8	043.6	42.20
325.0	000.3229	0176.2	018.6		065.2	000.0757	0237.6	043.9	42.07
326.0	000.3083	0176.9	018.5		065.3	000.0756	0238.4	044.3	41.95

Contour-to-Contour Map, WWPJ vs WSOU  
Town Of Monroe, Connecticut

FMCommander Single Allocation Study - 11-30-2016 - NED 03 SEC  
WWPJ's Overlaps (In= 10.12 km, Out= 22.24 km)

WWPJ CH 208 A DA  
Lat= 40 51 33.8, Lng= 75 18 04.4  
0.225 kW 230.8 m HAAT, 473 m COR  
Prot.= 60 dBu, Intef.= 40 dBu

WSOU CH 208 A BMLED20050909ABX  
Lat= 40 44 28.0, Lng= 74 14 42.0  
2.4 kW 95 m HAAT, 149 m COR  
Prot.= 60 dBu, Intef.= 40 dBu



11-30-2016

Terrain Data: NED 03 SEC

FMOver Analysis

WWPJ

WSOU BMLED20050909ABX

Channel = 208A

Max ERP = 0.225 kW

RCAMSL = 473 m

N. Lat. 40 51 33.8

W. Lng. 75 18 04.4

Protected

60 dBu

Channel = 208A

Max ERP = 2.4 kW

RCAMSL = 149 m

N. Lat. 40 44 28.0

W. Lng. 74 14 42.0

Interfering

40 dBu

Azimuth (degrees)	ERP (kW)	HAAT (m)	Dist (km)	Azimuth (degrees)	ERP (kW)	HAAT (m)	Dist (km)	Actual (dBu)	IX (km)
038.0	000.0977	0146.4	012.3	286.0	002.4000	0070.1	084.4	35.18	
039.0	000.0959	0132.2	011.6	285.6	002.4000	0070.2	084.5	35.17	
040.0	000.0942	0115.4	010.9	285.0	002.4000	0070.1	084.6	35.12	
041.0	000.0933	0097.1	010.0	284.4	002.4000	0069.8	084.8	35.05	
042.0	000.0924	0075.9	008.8	283.7	002.4000	0069.0	085.3	34.90	
043.0	000.0916	0063.1	008.0	283.2	002.4000	0068.2	085.5	34.79	
044.0	000.0907	0052.9	007.3	282.7	002.4000	0067.5	085.8	34.69	
045.0	000.0899	0050.6	007.1	282.6	002.4000	0067.3	085.8	34.68	
046.0	000.0887	0059.2	007.7	282.8	002.4000	0067.7	085.4	34.81	
047.0	000.0879	0072.3	008.5	283.2	002.4000	0068.3	084.8	34.99	
048.0	000.0870	0075.7	008.7	283.3	002.4000	0068.3	084.6	35.05	
049.0	000.0862	0082.8	009.1	283.4	002.4000	0068.6	084.2	35.15	
050.0	000.0854	0096.5	009.8	283.7	002.4000	0069.1	083.7	35.32	
051.0	000.0845	0103.9	010.1	283.8	002.4000	0069.3	083.3	35.42	
052.0	000.0837	0115.8	010.6	284.0	002.4000	0069.5	082.9	35.55	
053.0	000.0826	0125.8	011.0	284.2	002.4000	0069.7	082.5	35.66	
054.0	000.0818	0135.5	011.3	284.3	002.4000	0069.7	082.1	35.76	
055.0	000.0810	0148.1	011.9	284.5	002.4000	0069.9	081.6	35.89	
056.0	000.0802	0162.1	012.4	284.7	002.4000	0070.0	081.1	36.04	
057.0	000.0794	0174.8	012.9	284.8	002.4000	0070.0	080.6	36.16	
058.0	000.0783	0186.4	013.2	284.9	002.4000	0070.0	080.2	36.27	
059.0	000.0775	0196.6	013.5	284.9	002.4000	0070.0	079.8	36.37	
060.0	000.0767	0203.6	013.7	284.9	002.4000	0070.0	079.5	36.44	
061.0	000.0765	0210.2	013.9	284.8	002.4000	0070.0	079.2	36.52	
062.0	000.0762	0217.8	014.2	284.8	002.4000	0070.0	078.9	36.61	
063.0	000.0762	0224.8	014.4	284.8	002.4000	0070.0	078.5	36.70	
064.0	000.0760	0231.4	014.6	284.8	002.4000	0070.0	078.2	36.78	
065.0	000.0757	0236.8	014.7	284.7	002.4000	0070.0	077.9	36.85	
066.0	000.0754	0241.1	014.9	284.6	002.4000	0069.9	077.7	36.91	
067.0	000.0752	0244.3	014.9	284.5	002.4000	0069.9	077.5	36.97	
068.0	000.0752	0247.0	015.0	284.4	002.4000	0069.8	077.2	37.02	
069.0	000.0749	0249.4	015.1	284.2	002.4000	0069.7	077.0	37.07	
070.0	000.0746	0255.2	015.3	284.1	002.4000	0069.6	076.7	37.14	
071.0	000.0741	0260.0	015.4	284.0	002.4000	0069.5	076.5	37.20	
072.0	000.0736	0264.0	015.5	283.9	002.4000	0069.3	076.3	37.24	
073.0	000.0731	0267.2	015.6	283.7	002.4000	0069.0	076.1	37.28	

Azimuth (degrees)	ERP (kW)	HAAT (m)	Dist (km)	Azimuth (degrees)	ERP (kW)	HAAT (m)	Dist (km)	Actual (dBu)
074.0	000.0726	0268.8	015.6	283.6	002.4000	0068.8	075.9	37.31
075.0	000.0721	0268.5	015.5	283.4	002.4000	0068.5	075.8	37.31
076.0	000.0718	0268.1	015.5	283.2	002.4000	0068.2	075.7	37.32
077.0	000.0713	0267.8	015.5	283.0	002.4000	0067.9	075.6	37.33
078.0	000.0708	0266.3	015.4	282.8	002.4000	0067.6	075.6	37.32
079.0	000.0703	0266.2	015.4	282.6	002.4000	0067.3	075.5	37.32
080.0	000.0698	0265.6	015.3	282.4	002.4000	0067.1	075.4	37.32
081.0	000.0688	0264.1	015.2	282.2	002.4000	0066.9	075.4	37.31
082.0	000.0678	0263.4	015.1	281.9	002.4000	0066.6	075.4	37.30
083.0	000.0666	0264.0	015.1	281.7	002.4000	0066.4	075.4	37.30
084.0	000.0656	0264.6	015.0	281.5	002.4000	0066.2	075.4	37.30
085.0	000.0646	0264.8	015.0	281.3	002.4000	0066.1	075.3	37.29
086.0	000.0637	0265.2	014.9	281.1	002.4000	0065.8	075.3	37.29
087.0	000.0627	0265.4	014.9	280.9	002.4000	0065.7	075.3	37.29
088.0	000.0615	0270.5	015.0	280.8	002.4000	0065.6	075.2	37.31
089.0	000.0606	0271.9	015.0	280.6	002.4000	0065.5	075.1	37.31
090.0	000.0597	0269.2	014.8	280.3	002.4000	0065.3	075.2	37.28
091.0	000.0590	0269.1	014.8	280.1	002.4000	0065.1	075.2	37.27
092.0	000.0583	0268.9	014.7	279.9	002.4000	0064.9	075.2	37.25
093.0	000.0574	0269.1	014.7	279.7	002.4000	0064.7	075.3	37.24
094.0	000.0567	0270.4	014.7	279.6	002.4000	0064.6	075.2	37.23
095.0	000.0560	0269.8	014.6	279.4	002.4000	0064.4	075.3	37.21
096.0	000.0554	0272.4	014.6	279.2	002.4000	0064.3	075.2	37.22
097.0	000.0547	0270.5	014.5	279.0	002.4000	0064.3	075.3	37.19
098.0	000.0538	0277.5	014.7	278.8	002.4000	0064.2	075.2	37.23
099.0	000.0531	0280.8	014.7	278.6	002.4000	0064.2	075.1	37.23
100.0	000.0525	0282.3	014.7	278.4	002.4000	0064.1	075.1	37.23
101.0	000.0516	0283.2	014.7	278.2	002.4000	0064.0	075.2	37.21
102.0	000.0510	0286.5	014.7	278.0	002.4000	0063.9	075.2	37.21
103.0	000.0501	0287.7	014.7	277.8	002.4000	0063.8	075.2	37.19
104.0	000.0495	0288.7	014.7	277.6	002.4000	0063.7	075.3	37.17
105.0	000.0487	0290.0	014.7	277.4	002.4000	0063.6	075.3	37.15
106.0	000.0478	0289.5	014.6	277.2	002.4000	0063.6	075.4	37.12
107.0	000.0472	0288.7	014.5	277.1	002.4000	0063.6	075.6	37.09
108.0	000.0464	0291.1	014.5	276.9	002.4000	0063.7	075.6	37.08
109.0	000.0458	0289.2	014.4	276.7	002.4000	0063.7	075.7	37.05
110.0	000.0450	0291.1	014.4	276.5	002.4000	0063.7	075.8	37.03
111.0	000.0438	0293.0	014.4	276.3	002.4000	0063.6	075.9	36.99
112.0	000.0426	0290.3	014.2	276.2	002.4000	0063.5	076.2	36.93
113.0	000.0416	0292.1	014.2	276.0	002.4000	0063.3	076.3	36.89
114.0	000.0404	0298.4	014.2	275.8	002.4000	0063.1	076.3	36.87
115.0	000.0393	0298.1	014.1	275.7	002.4000	0062.8	076.5	36.81
116.0	000.0382	0297.5	014.0	275.5	002.4000	0062.5	076.7	36.75
117.0	000.0371	0297.8	013.9	275.4	002.4000	0062.2	076.8	36.68
118.0	000.0362	0300.7	013.9	275.2	002.4000	0061.9	076.9	36.64
119.0	000.0351	0304.0	013.9	275.1	002.4000	0061.6	077.1	36.59
120.0	000.0340	0306.3	013.8	274.9	002.4000	0061.3	077.2	36.53
121.0	000.0334	0310.8	013.8	274.8	002.4000	0060.9	077.3	36.49
122.0	000.0327	0312.6	013.8	274.6	002.4000	0060.6	077.4	36.43
123.0	000.0318	0311.8	013.7	274.5	002.4000	0060.3	077.7	36.37
124.0	000.0311	0312.2	013.6	274.4	002.4000	0060.0	077.8	36.31

Azimuth (degrees)	ERP (kW)	HAAT (m)	Dist (km)		Azimuth (degrees)	ERP (kW)	HAAT (m)	Dist (km)	Actual (dBu)
125.0	000.0305	0312.9	013.6		274.2	002.4000	0059.7	078.0	36.24
126.0	000.0298	0316.2	013.6		274.1	002.4000	0059.3	078.1	36.19
127.0	000.0292	0314.4	013.5		274.0	002.4000	0059.1	078.3	36.12
128.0	000.0284	0314.4	013.4		273.9	002.4000	0058.8	078.5	36.06
129.0	000.0277	0317.0	013.4		273.8	002.4000	0058.6	078.7	36.00
130.0	000.0271	0315.6	013.3		273.7	002.4000	0058.4	078.9	35.94
131.0	000.0262	0316.0	013.2		273.6	002.4000	0058.2	079.1	35.87
132.0	000.0253	0312.5	013.0		273.5	002.4000	0058.1	079.4	35.80
133.0	000.0244	0310.0	012.8		273.5	002.4000	0058.0	079.7	35.72
134.0	000.0235	0308.6	012.7		273.4	002.4000	0057.8	079.9	35.65
135.0	000.0226	0306.3	012.5		273.4	002.4000	0057.7	080.2	35.58
136.0	000.0218	0306.3	012.4		273.3	002.4000	0057.6	080.4	35.52
137.0	000.0209	0305.7	012.3		273.3	002.4000	0057.5	080.7	35.46
138.0	000.0201	0307.7	012.2		273.2	002.4000	0057.4	080.9	35.40
139.0	000.0193	0312.1	012.2		273.1	002.4000	0057.3	081.1	35.35
140.0	000.0185	0319.6	012.2		273.0	002.4000	0057.2	081.2	35.31
141.0	000.0180	0319.9	012.1		273.0	002.4000	0057.1	081.4	35.25
142.0	000.0176	0315.3	011.9		272.9	002.4000	0057.1	081.7	35.19
143.0	000.0171	0313.5	011.8		272.9	002.4000	0057.1	081.9	35.13
144.0	000.0168	0312.5	011.8		272.9	002.4000	0057.0	082.1	35.08
145.0	000.0163	0312.4	011.7		272.8	002.4000	0057.0	082.3	35.02
146.0	000.0158	0305.8	011.5		272.8	002.4000	0057.0	082.6	34.95
147.0	000.0154	0303.0	011.4		272.8	002.4000	0057.0	082.8	34.90
148.0	000.0150	0302.8	011.3		272.8	002.4000	0057.0	083.1	34.84
149.0	000.0146	0303.6	011.2		272.8	002.4000	0057.0	083.3	34.80
150.0	000.0142	0304.3	011.1		272.7	002.4000	0057.0	083.5	34.75
151.0	000.0136	0306.4	011.1		272.7	002.4000	0057.0	083.7	34.70
152.0	000.0131	0309.7	011.0		272.7	002.4000	0057.0	083.9	34.65
153.0	000.0125	0312.1	010.9		272.7	002.4000	0057.0	084.1	34.60
154.0	000.0120	0314.0	010.8		272.6	002.4000	0057.0	084.3	34.55
155.0	000.0114	0316.2	010.7		272.6	002.4000	0057.0	084.5	34.49
156.0	000.0109	0319.2	010.7		272.6	002.4000	0057.0	084.7	34.44
157.0	000.0104	0320.7	010.6		272.6	002.4000	0057.0	084.9	34.39

11-30-2016

Terrain Data: NED 03 SEC

FMOver Analysis

WSOU BMLE20050909ABX

WWPJ

Channel = 208A

Max ERP = 2.4 kW

RCAMSL = 149 m

N. Lat. 40 44 28.0

W. Lng. 74 14 42.0

Protected

60 dBu

Channel = 208A

Max ERP = 0.225 kW

RCAMSL = 473 m

N. Lat. 40 51 33.8

W. Lng. 75 18 04.4

Interfering

40 dBu

Azimuth (degrees)	ERP (kW)	HAAT (m)	Dist (km)	Azimuth (degrees)	ERP (kW)	HAAT (m)	Dist (km)	Actual (dBu)	IX (km)
219.0	002.4000	0115.7	024.6	113.4	000.0411	0294.5	080.3	27.76	
220.0	002.4000	0114.9	024.6	113.3	000.0413	0293.8	079.9	27.88	
221.0	002.4000	0114.5	024.5	113.2	000.0414	0293.1	079.5	28.00	
222.0	002.4000	0113.1	024.4	113.0	000.0416	0292.1	079.2	28.12	
223.0	002.4000	0111.8	024.3	112.8	000.0418	0291.4	078.8	28.23	
224.0	002.4000	0111.1	024.2	112.7	000.0419	0290.8	078.4	28.35	
225.0	002.4000	0110.1	024.1	112.5	000.0421	0290.4	078.1	28.48	
226.0	002.4000	0109.5	024.0	112.3	000.0423	0290.1	077.7	28.61	
227.0	002.4000	0108.3	023.9	112.1	000.0425	0290.0	077.4	28.74	
228.0	002.4000	0107.7	023.8	111.9	000.0426	0290.4	077.0	28.89	
229.0	002.4000	0106.5	023.7	111.7	000.0429	0290.8	076.7	29.03	
230.0	002.4000	0106.4	023.7	111.6	000.0431	0291.3	076.3	29.19	
231.0	002.4000	0106.2	023.7	111.4	000.0433	0291.8	076.0	29.34	
232.0	002.4000	0105.6	023.6	111.2	000.0435	0292.4	075.7	29.50	
233.0	002.4000	0105.8	023.6	111.1	000.0437	0292.9	075.3	29.65	
234.0	002.4000	0106.0	023.7	110.9	000.0439	0293.2	074.9	29.81	
235.0	002.4000	0103.7	023.4	110.6	000.0442	0293.7	074.7	29.93	
236.0	002.4000	0094.7	022.4	109.8	000.0451	0289.8	075.0	29.81	
237.0	002.4000	0082.8	021.0	108.7	000.0459	0290.5	075.5	29.72	
238.0	002.4000	0075.8	020.0	108.0	000.0464	0291.1	075.8	29.68	
239.0	002.4000	0072.9	019.7	107.6	000.0467	0290.3	075.8	29.69	
240.0	002.4000	0071.4	019.5	107.3	000.0469	0289.5	075.7	29.73	
241.0	002.4000	0067.3	018.9	106.9	000.0473	0288.5	075.8	29.69	
242.0	002.4000	0063.0	018.3	106.4	000.0476	0289.1	076.0	29.68	
243.0	002.4000	0060.4	018.0	106.0	000.0478	0289.5	076.0	29.70	
244.0	002.4000	0060.3	018.0	105.8	000.0480	0289.7	075.8	29.79	
245.0	002.4000	0060.3	017.9	105.6	000.0481	0289.9	075.6	29.87	
246.0	002.4000	0062.6	018.3	105.6	000.0481	0289.9	075.2	30.03	
247.0	002.4000	0066.7	018.8	105.7	000.0481	0289.8	074.5	30.24	
248.0	002.4000	0070.5	019.4	105.8	000.0480	0289.8	073.9	30.45	
249.0	002.4000	0071.6	019.5	105.6	000.0481	0289.9	073.6	30.57	
250.0	002.4000	0073.0	019.7	105.5	000.0482	0290.0	073.2	30.71	
251.0	002.4000	0072.5	019.6	105.3	000.0484	0290.1	073.1	30.78	

Azimuth (degrees)	ERP (kW)	HAAT (m)	Dist (km)	Azimuth (degrees)	ERP (kW)	HAAT (m)	Dist (km)	Actual (dBu)
252.0	002.4000	0070.8	019.4	104.9	000.0487	0290.0	073.1	30.80
253.0	002.4000	0067.1	018.9	104.5	000.0491	0289.2	073.3	30.73
254.0	002.4000	0064.7	018.6	104.2	000.0494	0288.9	073.4	30.71
255.0	002.4000	0061.6	018.1	103.8	000.0496	0288.2	073.6	30.64
256.0	002.4000	0057.7	017.6	103.3	000.0499	0287.8	074.0	30.52
257.0	002.4000	0056.0	017.3	103.0	000.0501	0287.6	074.1	30.50
258.0	002.4000	0055.0	017.1	102.8	000.0503	0287.9	074.1	30.52
259.0	002.4000	0053.7	016.9	102.5	000.0506	0287.8	074.2	30.51
260.0	002.4000	0053.1	016.8	102.2	000.0508	0287.6	074.2	30.52
261.0	002.4000	0054.4	017.0	102.1	000.0509	0287.1	073.8	30.63
262.0	002.4000	0054.3	017.0	101.9	000.0511	0285.9	073.8	30.64
263.0	002.4000	0052.4	016.6	101.6	000.0513	0284.4	074.0	30.53
264.0	002.4000	0051.5	016.5	101.3	000.0514	0283.7	074.0	30.50
265.0	002.4000	0051.5	016.5	101.1	000.0516	0283.4	074.0	30.53
266.0	002.4000	0052.3	016.6	100.9	000.0517	0283.1	073.7	30.61
267.0	002.4000	0052.1	016.6	100.7	000.0519	0282.8	073.7	30.63
268.0	002.4000	0053.2	016.8	100.5	000.0520	0282.6	073.4	30.73
269.0	002.4000	0054.7	017.1	100.3	000.0522	0282.5	073.1	30.85
270.0	002.4000	0055.8	017.3	100.1	000.0524	0282.4	072.9	30.94
271.0	002.4000	0057.0	017.5	099.9	000.0525	0282.2	072.6	31.04
272.0	002.4000	0057.1	017.5	099.7	000.0527	0282.0	072.5	31.07
273.0	002.4000	0057.2	017.5	099.5	000.0528	0281.6	072.5	31.08
274.0	002.4000	0059.1	017.8	099.2	000.0530	0281.2	072.2	31.20
275.0	002.4000	0061.4	018.1	099.0	000.0531	0280.8	071.8	31.32
276.0	002.4000	0063.3	018.4	098.8	000.0533	0280.1	071.5	31.41
277.0	002.4000	0063.6	018.4	098.5	000.0535	0279.2	071.5	31.41
278.0	002.4000	0063.9	018.5	098.3	000.0536	0278.4	071.4	31.42
279.0	002.4000	0064.3	018.5	098.0	000.0538	0277.6	071.4	31.43
280.0	002.4000	0065.0	018.6	097.7	000.0540	0276.0	071.3	31.42
281.0	002.4000	0065.8	018.7	097.5	000.0543	0273.8	071.2	31.41
282.0	002.4000	0066.7	018.8	097.2	000.0545	0271.5	071.1	31.39
283.0	002.4000	0067.9	019.0	096.9	000.0547	0270.3	070.9	31.42
284.0	002.4000	0069.5	019.2	096.6	000.0549	0270.4	070.7	31.49
285.0	002.4000	0070.1	019.3	096.4	000.0551	0271.4	070.7	31.55
286.0	002.4000	0070.1	019.3	096.1	000.0553	0272.2	070.8	31.58
287.0	002.4000	0069.6	019.2	095.8	000.0555	0272.5	070.9	31.56
288.0	002.4000	0068.6	019.1	095.6	000.0556	0272.4	071.1	31.50
289.0	002.4000	0067.3	018.9	095.4	000.0558	0271.6	071.3	31.40
290.0	002.4000	0066.0	018.7	095.1	000.0559	0270.7	071.6	31.30
291.0	002.4000	0065.2	018.6	094.9	000.0561	0269.3	071.8	31.20
292.0	002.4000	0065.2	018.6	094.7	000.0563	0268.8	071.8	31.17
293.0	002.4000	0064.7	018.6	094.4	000.0564	0268.8	072.0	31.12
294.0	002.4000	0064.9	018.6	094.2	000.0566	0269.8	072.1	31.14
295.0	002.4000	0064.5	018.5	094.0	000.0567	0270.4	072.3	31.12
296.0	002.4000	0063.8	018.4	093.7	000.0569	0270.7	072.5	31.06
297.0	002.4000	0063.4	018.4	093.5	000.0570	0270.4	072.6	31.01
298.0	002.4000	0062.9	018.3	093.3	000.0572	0269.9	072.8	30.94
299.0	002.4000	0061.8	018.2	093.1	000.0573	0269.5	073.1	30.84
300.0	002.4000	0060.8	018.0	093.0	000.0574	0269.0	073.4	30.75
301.0	002.4000	0061.4	018.1	092.7	000.0576	0268.5	073.4	30.72
302.0	002.4000	0062.0	018.2	092.5	000.0579	0268.3	073.5	30.71

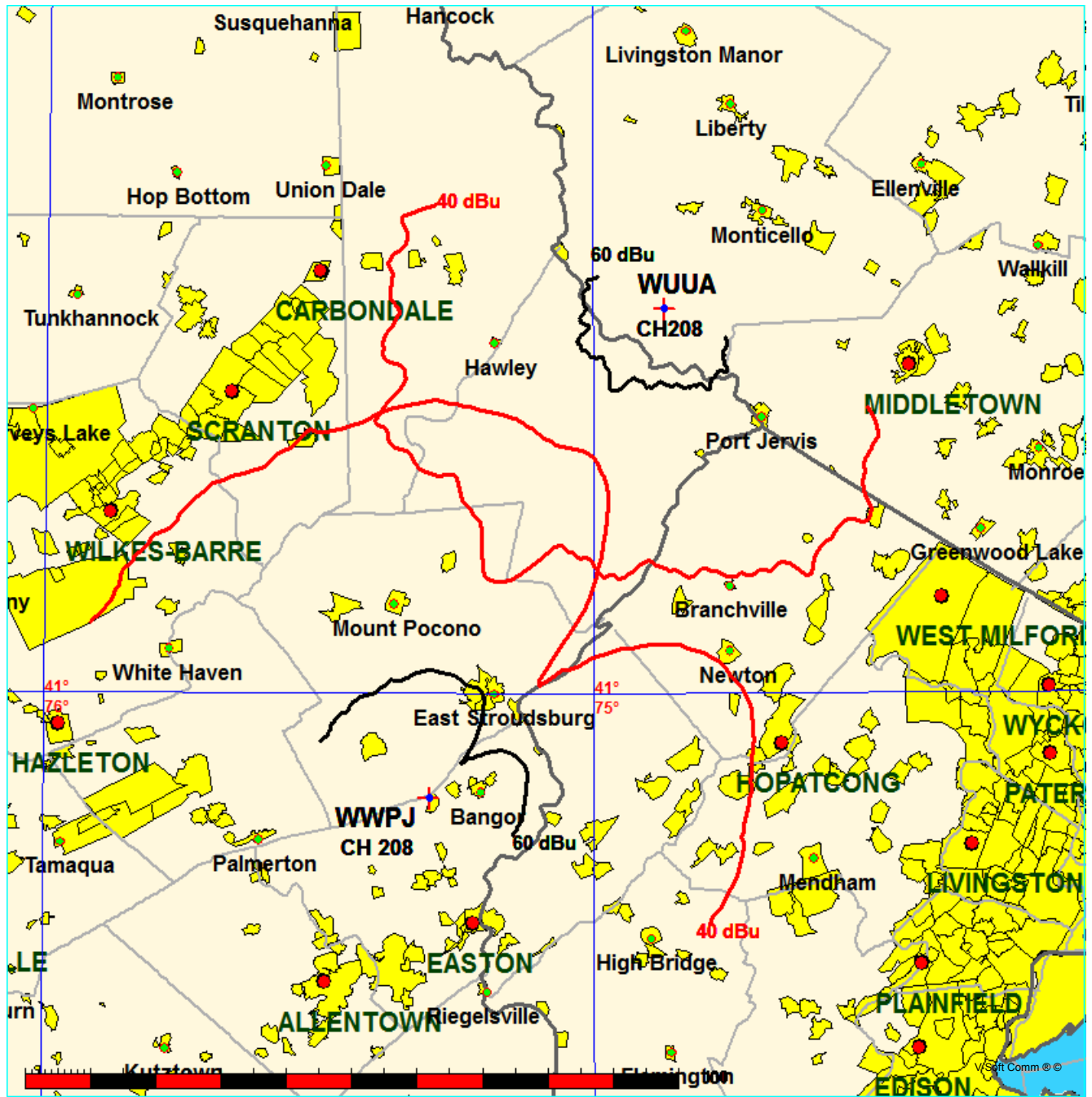
Azimuth (degrees)	ERP (kW)	HAAT (m)	Dist (km)		Azimuth (degrees)	ERP (kW)	HAAT (m)	Dist (km)	Actual (dBu)
303.0	002.4000	0062.4	018.2		092.2	000.0581	0268.4	073.6	30.70
304.0	002.4000	0062.6	018.3		092.0	000.0583	0268.9	073.7	30.68
305.0	002.4000	0061.8	018.2		091.8	000.0584	0269.2	074.0	30.61
306.0	002.4000	0060.8	018.0		091.7	000.0585	0269.3	074.3	30.52
307.0	002.4000	0060.5	018.0		091.5	000.0586	0269.4	074.5	30.46
308.0	002.4000	0059.4	017.8		091.4	000.0587	0269.4	074.8	30.36
309.0	002.4000	0058.0	017.6		091.3	000.0588	0269.4	075.2	30.25
310.0	002.4000	0056.7	017.4		091.2	000.0588	0269.3	075.5	30.13
311.0	002.4000	0057.0	017.4		091.0	000.0590	0269.1	075.7	30.08
312.0	002.4000	0056.7	017.4		090.8	000.0591	0268.8	075.9	30.01
313.0	002.4000	0056.5	017.4		090.7	000.0592	0268.8	076.1	29.93
314.0	002.4000	0055.1	017.1		090.6	000.0592	0268.8	076.5	29.81
315.0	002.4000	0053.7	016.9		090.6	000.0593	0268.8	076.9	29.69
316.0	002.4000	0053.5	016.8		090.5	000.0593	0268.6	077.1	29.61
317.0	002.4000	0052.8	016.7		090.4	000.0594	0268.7	077.4	29.52
318.0	002.4000	0052.2	016.6		090.3	000.0595	0268.8	077.7	29.43
319.0	002.4000	0052.5	016.7		090.1	000.0596	0269.1	077.9	29.39
320.0	002.4000	0053.5	016.8		089.9	000.0598	0269.3	078.0	29.38
321.0	002.4000	0054.5	017.0		089.6	000.0600	0269.6	078.1	29.37
322.0	002.4000	0055.2	017.2		089.4	000.0602	0270.4	078.3	29.35
323.0	002.4000	0055.1	017.1		089.3	000.0603	0270.9	078.5	29.30
324.0	002.4000	0053.7	016.9		089.3	000.0603	0270.8	078.9	29.17
325.0	002.4000	0052.1	016.6		089.4	000.0602	0270.6	079.3	29.02
326.0	002.4000	0051.3	016.4		089.4	000.0603	0270.7	079.6	28.92
327.0	002.4000	0050.8	016.3		089.3	000.0603	0271.0	079.9	28.83
328.0	002.4000	0049.6	016.1		089.3	000.0603	0270.8	080.3	28.71
329.0	002.4000	0049.1	016.0		089.3	000.0603	0271.0	080.6	28.62
330.0	002.4000	0048.1	015.8		089.3	000.0603	0271.0	080.9	28.51
331.0	002.4000	0046.6	015.5		089.4	000.0602	0270.6	081.3	28.37
332.0	002.4000	0045.7	015.4		089.4	000.0602	0270.5	081.6	28.26
333.0	002.4000	0045.2	015.3		089.4	000.0603	0270.6	081.9	28.18
334.0	002.4000	0044.4	015.1		089.4	000.0602	0270.6	082.2	28.07
335.0	002.4000	0042.5	014.8		089.5	000.0601	0270.0	082.6	27.92
336.0	002.4000	0040.9	014.5		089.6	000.0600	0269.7	082.9	27.79
337.0	002.4000	0039.1	014.1		089.8	000.0599	0269.4	083.3	27.66
338.0	002.4000	0037.5	013.8		089.9	000.0598	0269.3	083.6	27.54

Contour-to-Contour Map, WWPJ vs WUUA  
Town Of Monroe, Connecticut

FMCommander Single Allocation Study - 11-30-2016 - NED 03 SEC  
WWPJ's Overlaps (In= 16.15 km, Out= 10.23 km)

WWPJ CH 208 A DA  
Lat= 40 51 33.8, Lng= 75 18 04.4  
0.225 kW 230.8 m HAAT, 473 m COR  
Prot.= 60 dBu, Intef.= 40 dBu

WUUA CH 208 A BLED20130614AAU  
Lat= 41 31 27.0, Lng= 74 52 08.0  
0.11 kW 120 m HAAT, 477 m COR  
Prot.= 60 dBu, Intef.= 40 dBu



11-30-2016

Terrain Data: NED 03 SEC

FMOver Analysis

WWPJ

WUUA BLED20130614AAU

Channel = 208A  
 Max ERP = 0.225 kW  
 RCAMSL = 473 m  
 N. Lat. 40 51 33.8  
 W. Lng. 75 18 04.4  
 Protected  
 60 dBu

Channel = 208A  
 Max ERP = 0.11 kW  
 RCAMSL = 477 m  
 N. Lat. 41 31 27.0  
 W. Lng. 74 52 08.0  
 Interfering  
 40 dBu

Azimuth (degrees)	ERP (kW)	HAAT (m)	Dist (km)	Azimuth (degrees)	ERP (kW)	HAAT (m)	Dist (km)	Actual (dBu)	IX (km)
326.0	000.2201	0207.5	018.3	218.4	000.1100	0168.0	074.8	29.29	
327.0	000.2192	0205.5	018.2	218.3	000.1100	0169.6	074.6	29.44	
328.0	000.2183	0204.9	018.1	218.1	000.1100	0170.9	074.3	29.60	
329.0	000.2174	0202.3	018.0	218.0	000.1100	0173.0	074.0	29.77	
330.0	000.2165	0200.6	017.9	217.8	000.1100	0175.3	073.8	29.96	
331.0	000.2143	0199.7	017.8	217.6	000.1100	0177.6	073.5	30.14	
332.0	000.2121	0199.3	017.7	217.5	000.1100	0179.0	073.3	30.28	
333.0	000.2095	0199.2	017.7	217.4	000.1100	0180.2	073.0	30.42	
334.0	000.2074	0201.0	017.7	217.3	000.1100	0180.8	072.7	30.54	
335.0	000.2052	0206.4	017.9	217.3	000.1100	0180.7	072.4	30.65	
336.0	000.2031	0210.1	018.0	217.2	000.1100	0181.0	072.0	30.77	
337.0	000.2009	0211.7	018.0	217.1	000.1100	0181.8	071.7	30.90	
338.0	000.1984	0213.4	018.0	217.0	000.1100	0182.3	071.5	31.02	
339.0	000.1963	0216.7	018.1	216.9	000.1100	0182.8	071.2	31.14	
340.0	000.1942	0221.3	018.3	216.9	000.1100	0183.0	070.8	31.26	
341.0	000.1929	0230.2	018.6	217.0	000.1100	0182.5	070.4	31.39	
342.0	000.1913	0231.1	018.6	216.8	000.1100	0183.5	070.1	31.52	
343.0	000.1900	0225.2	018.3	216.5	000.1100	0186.2	070.0	31.67	
344.0	000.1884	0222.9	018.2	216.2	000.1100	0188.0	069.8	31.80	
345.0	000.1867	0222.1	018.1	216.0	000.1100	0189.3	069.6	31.92	
346.0	000.1855	0222.8	018.1	215.9	000.1100	0190.3	069.4	32.04	
347.0	000.1843	0223.7	018.1	215.7	000.1100	0191.6	069.1	32.18	
348.0	000.1827	0225.9	018.2	215.6	000.1100	0193.0	068.9	32.32	
349.0	000.1810	0228.1	018.2	215.4	000.1100	0194.3	068.6	32.47	
350.0	000.1798	0230.6	018.3	215.3	000.1100	0195.6	068.3	32.61	
351.0	000.1786	0234.8	018.4	215.1	000.1100	0196.6	068.0	32.76	
352.0	000.1774	0239.2	018.6	215.0	000.1100	0197.6	067.7	32.91	
353.0	000.1758	0244.1	018.7	214.9	000.1100	0198.6	067.4	33.06	
354.0	000.1746	0247.0	018.8	214.7	000.1100	0200.0	067.1	33.21	
355.0	000.1734	0249.0	018.8	214.5	000.1100	0201.7	066.8	33.36	
356.0	000.1723	0251.1	018.9	214.4	000.1100	0202.7	066.6	33.49	
357.0	000.1711	0254.9	019.0	214.2	000.1100	0203.2	066.3	33.61	
358.0	000.1695	0256.5	019.0	214.0	000.1100	0203.6	066.1	33.69	
359.0	000.1684	0259.6	019.1	213.8	000.1100	0203.8	065.8	33.79	
000.0	000.1672	0263.2	019.2	213.6	000.1100	0203.5	065.6	33.87	
001.0	000.1653	0266.7	019.3	213.4	000.1100	0202.9	065.3	33.92	

Azimuth (degrees)	ERP (kW)	HAAT (m)	Dist (km)	Azimuth (degrees)	ERP (kW)	HAAT (m)	Dist (km)	Actual (dBu)
002.0	000.1637	0264.9	019.2	213.1	000.1100	0201.6	065.2	33.90
003.0	000.1618	0264.3	019.1	212.8	000.1100	0200.7	065.1	33.90
004.0	000.1599	0264.5	019.0	212.5	000.1100	0199.7	065.0	33.89
005.0	000.1584	0262.4	018.9	212.2	000.1100	0198.9	065.0	33.88
006.0	000.1565	0265.2	018.9	211.9	000.1100	0198.5	064.8	33.92
007.0	000.1546	0264.9	018.9	211.6	000.1100	0197.1	064.7	33.89
008.0	000.1528	0264.6	018.8	211.4	000.1100	0196.1	064.7	33.87
009.0	000.1513	0266.2	018.8	211.1	000.1100	0195.4	064.5	33.89
010.0	000.1495	0266.8	018.8	210.8	000.1100	0194.8	064.4	33.89
011.0	000.1473	0268.0	018.8	210.5	000.1100	0193.4	064.3	33.87
012.0	000.1451	0268.9	018.7	210.2	000.1100	0191.6	064.3	33.81
013.0	000.1433	0268.8	018.7	209.9	000.1100	0189.1	064.2	33.72
014.0	000.1411	0268.3	018.6	209.6	000.1100	0186.0	064.2	33.59
015.0	000.1390	0266.2	018.4	209.3	000.1100	0182.3	064.3	33.42
016.0	000.1369	0265.5	018.3	209.0	000.1100	0178.4	064.3	33.24
017.0	000.1348	0261.2	018.1	208.7	000.1100	0174.2	064.5	33.00
018.0	000.1331	0258.6	017.9	208.4	000.1100	0169.9	064.6	32.76
019.0	000.1310	0260.3	017.9	208.1	000.1100	0165.8	064.5	32.58
020.0	000.1289	0260.2	017.8	207.9	000.1100	0161.8	064.6	32.37
021.0	000.1272	0263.1	017.9	207.6	000.1100	0157.6	064.5	32.18
022.0	000.1256	0267.4	018.0	207.3	000.1100	0153.1	064.4	31.99
023.0	000.1239	0269.9	018.0	207.0	000.1100	0148.8	064.3	31.78
024.0	000.1222	0273.5	018.1	206.8	000.1100	0145.1	064.2	31.61
025.0	000.1209	0274.9	018.1	206.5	000.1100	0141.9	064.2	31.44
026.0	000.1192	0276.6	018.1	206.2	000.1100	0138.3	064.2	31.25
027.0	000.1176	0270.7	017.8	205.9	000.1100	0134.9	064.5	30.98
028.0	000.1160	0264.4	017.5	205.7	000.1100	0132.0	064.8	30.73
029.0	000.1144	0257.7	017.2	205.4	000.1100	0129.6	065.1	30.49
030.0	000.1128	0250.1	016.9	205.2	000.1100	0127.4	065.5	30.25
031.0	000.1109	0239.5	016.4	205.0	000.1100	0125.6	066.0	30.00
032.0	000.1090	0227.2	015.9	204.8	000.1100	0124.4	066.5	29.75
033.0	000.1071	0213.1	015.3	204.6	000.1100	0123.5	067.2	29.51
034.0	000.1053	0199.2	014.7	204.5	000.1100	0122.7	067.8	29.27
035.0	000.1034	0184.8	014.1	204.4	000.1100	0122.0	068.4	29.05
036.0	000.1013	0172.8	013.6	204.2	000.1100	0121.4	068.9	28.84
037.0	000.0995	0158.9	013.0	204.2	000.1100	0121.1	069.6	28.62
038.0	000.0977	0146.4	012.3	204.1	000.1100	0121.0	070.3	28.41
039.0	000.0959	0132.2	011.6	204.1	000.1100	0120.9	071.0	28.18
040.0	000.0942	0115.4	010.9	204.1	000.1100	0120.9	071.8	27.94
041.0	000.0933	0097.1	010.0	204.2	000.1100	0121.1	072.7	27.68
042.0	000.0924	0075.9	008.8	204.3	000.1100	0121.8	073.9	27.36
043.0	000.0916	0063.1	008.0	204.4	000.1100	0122.3	074.7	27.14
044.0	000.0907	0052.9	007.3	204.5	000.1100	0122.8	075.4	26.95
045.0	000.0899	0050.6	007.1	204.5	000.1100	0122.6	075.6	26.87
046.0	000.0887	0059.2	007.7	204.2	000.1100	0121.3	075.1	26.96
047.0	000.0879	0072.3	008.5	203.9	000.1100	0120.3	074.4	27.11
048.0	000.0870	0075.7	008.7	203.7	000.1100	0120.1	074.3	27.13
049.0	000.0862	0082.8	009.1	203.5	000.1100	0120.2	074.0	27.23
050.0	000.0854	0096.5	009.8	203.1	000.1100	0121.5	073.5	27.46
051.0	000.0845	0103.9	010.1	202.9	000.1100	0122.5	073.3	27.57
052.0	000.0837	0115.8	010.6	202.6	000.1100	0123.7	072.9	27.74

Azimuth (degrees)	ERP (kW)	HAAT (m)	Dist (km)		Azimuth (degrees)	ERP (kW)	HAAT (m)	Dist (km)	Actual (dBu)
053.0	000.0826	0125.8	011.0		202.3	000.1100	0124.4	072.7	27.84
054.0	000.0818	0135.5	011.3		202.0	000.1100	0124.3	072.5	27.91
055.0	000.0810	0148.1	011.9		201.6	000.1100	0123.5	072.1	27.96
056.0	000.0802	0162.1	012.4		201.2	000.1100	0122.7	071.8	28.03
057.0	000.0794	0174.8	012.9		200.9	000.1100	0123.0	071.5	28.12
058.0	000.0783	0186.4	013.2		200.6	000.1100	0123.8	071.4	28.21
059.0	000.0775	0196.6	013.5		200.3	000.1100	0125.1	071.3	28.30
060.0	000.0767	0203.6	013.7		200.0	000.1100	0125.9	071.3	28.33
061.0	000.0765	0210.2	013.9		199.8	000.1100	0126.6	071.3	28.37
062.0	000.0762	0217.8	014.2		199.5	000.1100	0126.9	071.3	28.39
063.0	000.0762	0224.8	014.4		199.2	000.1100	0126.9	071.3	28.38
064.0	000.0760	0231.4	014.6		199.0	000.1100	0126.5	071.4	28.35
065.0	000.0757	0236.8	014.7		198.8	000.1100	0125.9	071.5	28.30
066.0	000.0754	0241.1	014.9		198.5	000.1100	0125.3	071.6	28.23
067.0	000.0752	0244.3	014.9		198.4	000.1100	0124.9	071.7	28.17
068.0	000.0752	0247.0	015.0		198.2	000.1100	0124.7	071.8	28.12
069.0	000.0749	0249.4	015.1		198.0	000.1100	0124.3	072.0	28.04
070.0	000.0746	0255.2	015.3		197.8	000.1100	0123.7	072.1	27.99
071.0	000.0741	0260.0	015.4		197.6	000.1100	0123.4	072.2	27.93
072.0	000.0736	0264.0	015.5		197.4	000.1100	0123.3	072.4	27.88
073.0	000.0731	0267.2	015.6		197.2	000.1100	0123.7	072.6	27.84
074.0	000.0726	0268.8	015.6		197.1	000.1100	0124.0	072.8	27.79
075.0	000.0721	0268.5	015.5		197.0	000.1100	0124.2	073.1	27.72
076.0	000.0718	0268.1	015.5		196.9	000.1100	0124.4	073.3	27.66
077.0	000.0713	0267.8	015.5		196.8	000.1100	0124.6	073.6	27.59
078.0	000.0708	0266.3	015.4		196.8	000.1100	0124.7	073.8	27.51
079.0	000.0703	0266.2	015.4		196.7	000.1100	0124.9	074.1	27.45
080.0	000.0698	0265.6	015.3		196.6	000.1100	0125.1	074.3	27.38
081.0	000.0688	0264.1	015.2		196.6	000.1100	0125.2	074.6	27.30
082.0	000.0678	0263.4	015.1		196.6	000.1100	0125.3	074.9	27.22
083.0	000.0666	0264.0	015.1		196.5	000.1100	0125.4	075.2	27.15
084.0	000.0656	0264.6	015.0		196.5	000.1100	0125.6	075.4	27.08
085.0	000.0646	0264.8	015.0		196.4	000.1100	0125.7	075.7	27.01

11-30-2016

Terrain Data: NED 03 SEC

FMOver Analysis

WUUA BLED20130614AAU

WWPJ

Channel = 208A

Max ERP = 0.11 kW

RCAMSL = 477 m

N. Lat. 41 31 27.0

W. Lng. 74 52 08.0

Protected

60 dBu

Channel = 208A

Max ERP = 0.225 kW

RCAMSL = 473 m

N. Lat. 40 51 33.8

W. Lng. 75 18 04.4

Interfering

40 dBu

Azimuth (degrees)	ERP (kW)	HAAT (m)	Dist (km)	Azimuth (degrees)	ERP (kW)	HAAT (m)	Dist (km)	Actual (dBu)	IX (km)
146.0	000.1100	0150.7	012.9	034.3	000.1047	0193.8	076.7	29.56	
147.0	000.1100	0153.1	013.0	034.3	000.1046	0193.6	076.5	29.63	
148.0	000.1100	0155.6	013.1	034.4	000.1046	0193.3	076.2	29.70	
149.0	000.1100	0160.9	013.4	034.5	000.1044	0192.0	075.9	29.74	
150.0	000.1100	0169.6	013.8	034.6	000.1041	0189.2	075.5	29.74	
151.0	000.1100	0176.0	014.0	034.7	000.1039	0187.9	075.2	29.78	
152.0	000.1100	0174.2	013.9	034.6	000.1041	0189.7	075.0	29.93	
153.0	000.1100	0161.8	013.4	034.2	000.1050	0196.6	075.0	30.23	
154.0	000.1100	0150.5	012.9	033.7	000.1058	0203.6	075.1	30.53	
155.0	000.1100	0146.1	012.7	033.5	000.1062	0206.7	075.0	30.70	
156.0	000.1100	0145.2	012.6	033.4	000.1064	0208.2	074.8	30.82	
157.0	000.1100	0147.3	012.7	033.4	000.1064	0208.5	074.6	30.91	
158.0	000.1100	0149.4	012.8	033.3	000.1065	0208.9	074.4	31.01	
159.0	000.1100	0145.9	012.7	033.1	000.1069	0211.4	074.3	31.15	
160.0	000.1100	0143.5	012.6	033.0	000.1072	0213.7	074.2	31.29	
161.0	000.1100	0146.0	012.7	032.9	000.1073	0214.2	073.9	31.39	
162.0	000.1100	0145.9	012.7	032.8	000.1075	0215.7	073.7	31.51	
163.0	000.1100	0143.8	012.6	032.7	000.1078	0218.0	073.6	31.65	
164.0	000.1100	0139.9	012.4	032.4	000.1082	0221.1	073.6	31.80	
165.0	000.1100	0142.5	012.5	032.4	000.1083	0221.7	073.3	31.90	
166.0	000.1100	0141.2	012.5	032.2	000.1085	0223.6	073.2	32.02	
167.0	000.1100	0139.9	012.4	032.1	000.1088	0225.8	073.1	32.15	
168.0	000.1100	0135.2	012.2	031.8	000.1093	0229.3	073.1	32.30	
169.0	000.1100	0130.5	012.0	031.6	000.1097	0232.4	073.1	32.42	
170.0	000.1100	0129.9	011.9	031.5	000.1100	0234.1	073.0	32.53	
171.0	000.1100	0125.8	011.7	031.3	000.1104	0236.6	073.0	32.64	
172.0	000.1100	0125.2	011.7	031.1	000.1106	0238.1	072.9	32.74	
173.0	000.1100	0129.2	011.9	031.1	000.1107	0238.5	072.6	32.84	
174.0	000.1100	0132.6	012.1	031.0	000.1108	0239.1	072.4	32.95	
175.0	000.1100	0133.2	012.1	030.9	000.1111	0240.4	072.2	33.05	
176.0	000.1100	0130.4	012.0	030.7	000.1114	0242.5	072.2	33.15	
177.0	000.1100	0126.4	011.8	030.5	000.1118	0245.2	072.2	33.24	
178.0	000.1100	0123.7	011.7	030.3	000.1122	0247.3	072.2	33.33	

Azimuth (degrees)	ERP (kW)	HAAT (m)	Dist (km)	Azimuth (degrees)	ERP (kW)	HAAT (m)	Dist (km)	Actual (dBu)
179.0	000.1100	0124.0	011.7	030.2	000.1124	0248.6	072.1	33.42
180.0	000.1100	0121.7	011.6	030.0	000.1128	0250.1	072.1	33.49
181.0	000.1100	0119.5	011.5	029.8	000.1131	0251.4	072.1	33.55
182.0	000.1100	0118.3	011.4	029.7	000.1133	0252.4	072.0	33.61
183.0	000.1100	0115.4	011.3	029.5	000.1136	0253.8	072.0	33.66
184.0	000.1100	0114.2	011.2	029.3	000.1139	0255.1	072.0	33.73
185.0	000.1100	0117.4	011.4	029.2	000.1140	0255.9	071.8	33.83
186.0	000.1100	0120.6	011.5	029.1	000.1142	0256.7	071.6	33.94
187.0	000.1100	0126.5	011.8	029.1	000.1143	0257.3	071.3	34.07
188.0	000.1100	0130.2	011.9	028.9	000.1145	0258.2	071.0	34.18
189.0	000.1100	0136.1	012.2	028.9	000.1146	0258.7	070.7	34.32
190.0	000.1100	0138.4	012.3	028.7	000.1148	0259.7	070.5	34.42
191.0	000.1100	0134.3	012.1	028.5	000.1152	0260.9	070.7	34.43
192.0	000.1100	0135.8	012.2	028.4	000.1154	0262.0	070.5	34.52
193.0	000.1100	0140.9	012.4	028.3	000.1156	0262.7	070.2	34.65
194.0	000.1100	0138.1	012.3	028.1	000.1159	0264.0	070.3	34.68
195.0	000.1100	0133.4	012.1	027.8	000.1162	0265.5	070.5	34.69
196.0	000.1100	0127.6	011.8	027.6	000.1166	0267.0	070.7	34.68
197.0	000.1100	0124.1	011.7	027.4	000.1169	0268.2	070.8	34.69
198.0	000.1100	0124.3	011.7	027.3	000.1171	0269.1	070.7	34.74
199.0	000.1100	0126.5	011.8	027.1	000.1174	0269.9	070.6	34.82
200.0	000.1100	0125.9	011.8	027.0	000.1177	0270.9	070.6	34.87
201.0	000.1100	0122.7	011.6	026.8	000.1180	0272.0	070.7	34.87
202.0	000.1100	0124.3	011.7	026.6	000.1182	0273.1	070.6	34.95
203.0	000.1100	0122.0	011.6	026.5	000.1185	0274.3	070.7	34.97
204.0	000.1100	0120.6	011.5	026.3	000.1188	0275.5	070.8	35.00
205.0	000.1100	0125.9	011.8	026.1	000.1190	0276.2	070.5	35.12
206.0	000.1100	0135.8	012.2	026.0	000.1193	0276.7	070.1	35.30
207.0	000.1100	0148.2	012.8	025.8	000.1196	0277.0	069.5	35.52
208.0	000.1100	0163.8	013.5	025.6	000.1199	0276.9	068.8	35.78
209.0	000.1100	0177.9	014.1	025.4	000.1203	0276.4	068.2	35.98
210.0	000.1100	0189.7	014.5	025.1	000.1207	0275.4	067.8	36.10
211.0	000.1100	0195.3	014.7	024.9	000.1210	0274.5	067.6	36.14
212.0	000.1100	0198.6	014.8	024.7	000.1213	0273.9	067.5	36.17
213.0	000.1100	0201.4	014.9	024.4	000.1216	0273.6	067.5	36.19
214.0	000.1100	0203.5	015.0	024.2	000.1219	0273.7	067.4	36.22
215.0	000.1100	0197.8	014.8	024.0	000.1222	0273.5	067.7	36.13
216.0	000.1100	0189.5	014.5	023.9	000.1224	0273.3	068.0	36.01
217.0	000.1100	0182.4	014.3	023.7	000.1227	0273.0	068.3	35.91
218.0	000.1100	0172.6	013.9	023.6	000.1229	0272.4	068.8	35.75
219.0	000.1100	0163.3	013.5	023.5	000.1231	0271.9	069.2	35.58
220.0	000.1100	0157.4	013.2	023.3	000.1233	0271.5	069.5	35.46
221.0	000.1100	0151.5	012.9	023.2	000.1235	0271.1	069.9	35.34
222.0	000.1100	0150.3	012.9	023.1	000.1238	0270.3	070.0	35.28
223.0	000.1100	0150.3	012.9	022.9	000.1241	0269.4	070.1	35.24
224.0	000.1100	0147.6	012.8	022.8	000.1243	0268.9	070.2	35.16
225.0	000.1100	0147.0	012.7	022.6	000.1246	0268.7	070.4	35.13
226.0	000.1100	0147.4	012.7	022.4	000.1248	0268.9	070.4	35.12
227.0	000.1100	0146.6	012.7	022.3	000.1251	0268.7	070.5	35.08
228.0	000.1100	0143.7	012.6	022.2	000.1253	0268.3	070.8	35.00
229.0	000.1100	0139.9	012.4	022.1	000.1254	0267.8	071.0	34.90

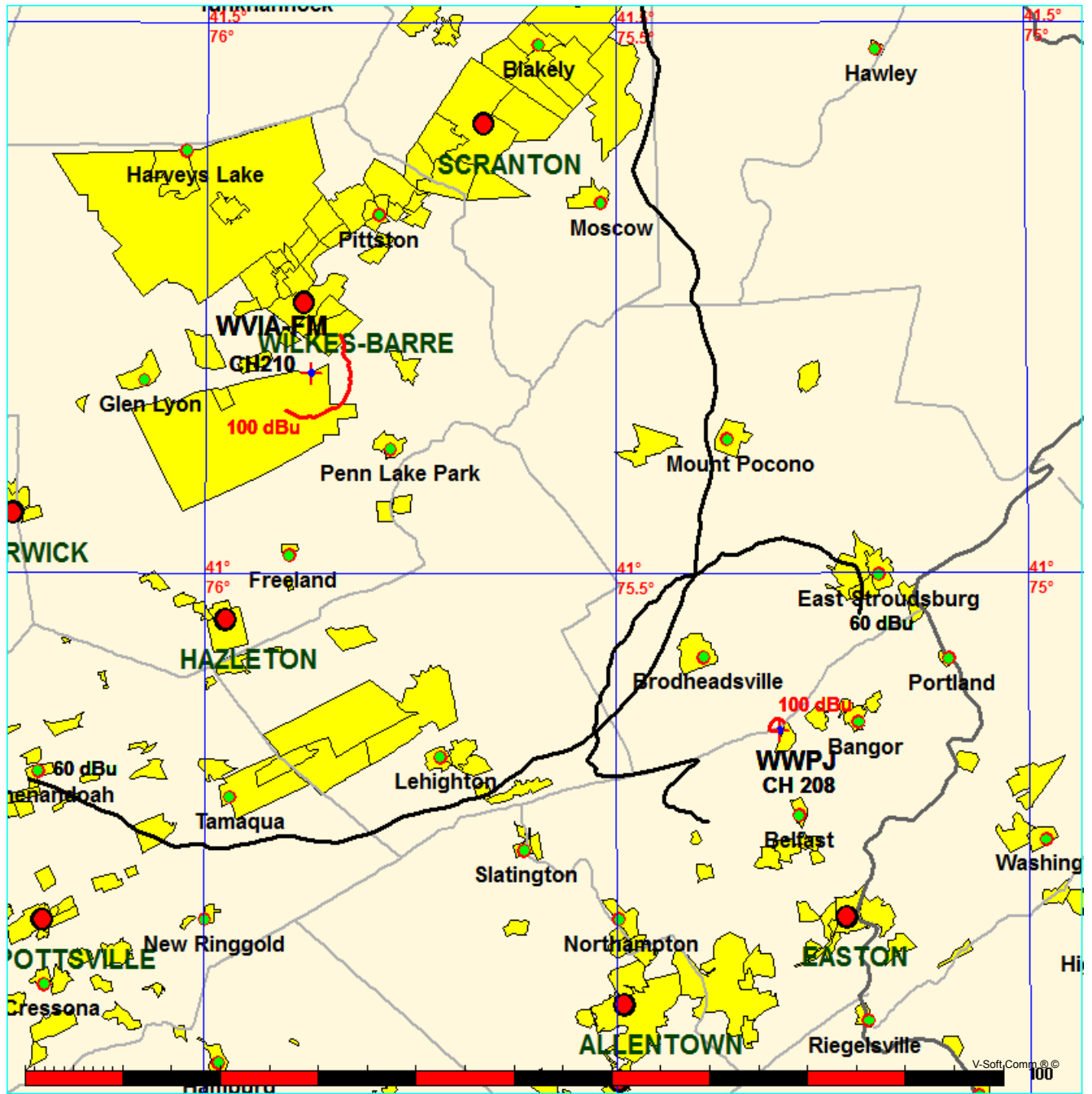
Azimuth (degrees)	ERP (kW)	HAAT (m)	Dist (km)		Azimuth (degrees)	ERP (kW)	HAAT (m)	Dist (km)	Actual (dBu)
230.0	000.1100	0137.3	012.3		022.0	000.1256	0267.1	071.2	34.81
231.0	000.1100	0135.0	012.2		021.8	000.1258	0266.5	071.4	34.73
232.0	000.1100	0133.0	012.1		021.7	000.1260	0266.0	071.6	34.66
233.0	000.1100	0139.4	012.4		021.5	000.1265	0265.2	071.5	34.70
234.0	000.1100	0150.7	012.9		021.1	000.1271	0263.6	071.1	34.78
235.0	000.1100	0156.3	013.2		020.8	000.1275	0262.2	071.0	34.79
236.0	000.1100	0160.7	013.4		020.6	000.1280	0261.3	071.0	34.78
237.0	000.1100	0164.5	013.5		020.3	000.1284	0261.1	071.0	34.79
238.0	000.1100	0167.1	013.6		020.1	000.1287	0260.7	071.0	34.77
239.0	000.1100	0165.9	013.6		020.0	000.1289	0260.3	071.2	34.70
240.0	000.1100	0166.2	013.6		019.8	000.1292	0259.8	071.4	34.65
241.0	000.1100	0166.7	013.6		019.7	000.1296	0259.8	071.5	34.61
242.0	000.1100	0172.0	013.9		019.4	000.1301	0260.7	071.5	34.66
243.0	000.1100	0178.9	014.1		019.1	000.1307	0260.6	071.5	34.69
244.0	000.1100	0182.0	014.2		018.9	000.1311	0260.2	071.6	34.66
245.0	000.1100	0182.3	014.3		018.8	000.1314	0260.0	071.7	34.61
246.0	000.1100	0179.0	014.1		018.7	000.1316	0259.9	072.0	34.52
247.0	000.1100	0179.8	014.2		018.6	000.1319	0259.7	072.2	34.47
248.0	000.1100	0186.3	014.4		018.3	000.1324	0259.2	072.2	34.46
249.0	000.1100	0189.2	014.5		018.1	000.1328	0258.8	072.3	34.41
250.0	000.1100	0178.6	014.1		018.2	000.1326	0259.1	072.8	34.27
251.0	000.1100	0169.6	013.8		018.3	000.1324	0259.3	073.2	34.13
252.0	000.1100	0158.0	013.2		018.5	000.1319	0259.7	073.7	33.96
253.0	000.1100	0146.8	012.7		018.8	000.1315	0259.9	074.2	33.79
254.0	000.1100	0138.3	012.3		018.9	000.1312	0260.1	074.6	33.64
255.0	000.1100	0134.4	012.1		018.9	000.1311	0260.2	074.8	33.55
256.0	000.1100	0134.2	012.1		018.8	000.1313	0260.0	075.0	33.49
257.0	000.1100	0132.2	012.0		018.8	000.1314	0260.0	075.3	33.42
258.0	000.1100	0136.8	012.2		018.6	000.1318	0259.7	075.3	33.40
259.0	000.1100	0147.8	012.8		018.2	000.1327	0258.9	075.3	33.43
260.0	000.1100	0155.9	013.1		017.8	000.1333	0258.7	075.3	33.43
261.0	000.1100	0156.1	013.1		017.8	000.1335	0258.9	075.5	33.38
262.0	000.1100	0153.8	013.0		017.7	000.1335	0258.9	075.7	33.29
263.0	000.1100	0154.4	013.1		017.7	000.1337	0259.1	075.9	33.24
264.0	000.1100	0151.8	012.9		017.7	000.1336	0259.1	076.2	33.15
265.0	000.1100	0148.7	012.8		017.7	000.1336	0259.0	076.4	33.06

Contour-to-Contour Map, WWPJ vs WVIA-FM  
Town Of Monroe, Connecticut

FMCommander Single Allocation Study - 11-30-2016 - NED 03 SEC  
WWPJ's Overlaps (In= 36.99 km, Out= 13.34 km)

WWPJ CH 208 A DA  
Lat= 40 51 33.8, Lng= 75 18 04.4  
0.225 kW 230.8 m HAAT, 473 m COR  
Prot.= 60 dBu, Intef.= 100 dBu

WVIA-FM CH 210 B DA BLED20081107AEO  
Lat= 41 10 55.0, Lng= 75 52 17.0  
7.4 kW 381 m HAAT, 761 m COR  
Prot.= 60 dBu, Intef.= 100 dBu



11-30-2016

Terrain Data: NED 03 SEC

FMOver Analysis

WWPJ

WVIA-FM BLED20081107AEO

Channel = 208A

Max ERP = 0.225 kW

RCAMSL = 473 m

N. Lat. 40 51 33.8

W. Lng. 75 18 04.4

Protected

60 dBu

Channel = 210B

Max ERP = 7.4 kW

RCAMSL = 761 m

N. Lat. 41 10 55.0

W. Lng. 75 52 17.0

Interfering

100 dBu

Azimuth (degrees)	ERP (kW)	HAAT (m)	Dist (km)	Azimuth (degrees)	ERP (kW)	HAAT (m)	Dist (km)	Actual (dBu)	IX (km)
247.0	000.1050	0092.0	010.0	135.7	007.4000	0282.1	055.5	58.81	
248.0	000.1099	0078.8	009.4	135.0	007.4000	0282.4	055.5	58.79	
249.0	000.1150	0071.3	009.0	134.6	007.4000	0282.2	055.5	58.79	
250.0	000.1206	0075.8	009.4	134.9	007.4000	0282.3	055.2	58.92	
251.0	000.1262	0103.2	011.1	136.4	007.4000	0282.2	054.4	59.25	
252.0	000.1320	0156.9	013.8	139.0	007.4000	0284.6	053.1	59.84	
253.0	000.1383	0202.8	015.9	141.0	007.2364	0288.2	052.0	60.28	
254.0	000.1447	0235.2	017.5	142.5	007.0057	0294.0	051.2	60.65	
255.0	000.1517	0255.8	018.5	143.4	006.8622	0296.1	050.6	60.89	
256.0	000.1588	0269.0	019.1	144.0	006.7688	0297.3	050.0	61.09	
257.0	000.1660	0270.7	019.4	144.2	006.7455	0297.7	049.6	61.25	
258.0	000.1738	0259.3	019.2	143.8	006.8007	0296.7	049.4	61.35	
259.0	000.1822	0258.5	019.4	143.8	006.7931	0296.9	049.0	61.50	
260.0	000.1909	0264.3	019.9	144.1	006.7470	0297.7	048.5	61.70	
261.0	000.1963	0263.2	020.0	144.1	006.7589	0297.4	048.1	61.83	
262.0	000.2018	0251.2	019.7	143.5	006.8404	0296.2	048.0	61.91	
263.0	000.2078	0239.7	019.3	143.0	006.9209	0295.5	047.8	62.00	
264.0	000.2135	0229.2	019.0	142.5	007.0017	0294.1	047.7	62.06	
265.0	000.2192	0222.1	018.9	142.1	007.0621	0292.5	047.5	62.12	
266.0	000.2250	0213.6	018.6	141.7	007.1345	0290.3	047.3	62.16	
267.0	000.2250	0214.9	018.7	141.5	007.1617	0289.6	047.0	62.27	
268.0	000.2250	0215.4	018.7	141.3	007.1953	0289.0	046.8	62.39	
269.0	000.2250	0219.0	018.9	141.2	007.2092	0288.7	046.4	62.53	
270.0	000.2250	0221.5	019.0	141.0	007.2328	0288.3	046.1	62.67	
271.0	000.2250	0220.4	018.9	140.7	007.2820	0287.4	045.9	62.76	
272.0	000.2250	0215.9	018.7	140.3	007.3540	0286.3	045.7	62.82	
273.0	000.2250	0216.4	018.8	140.0	007.3954	0285.8	045.5	62.94	
274.0	000.2250	0215.7	018.7	139.7	007.4000	0285.8	045.2	63.03	
275.0	000.2250	0216.5	018.8	139.5	007.4000	0285.7	045.0	63.14	
276.0	000.2250	0217.6	018.8	139.2	007.4000	0285.1	044.7	63.23	
277.0	000.2250	0219.4	018.9	139.0	007.4000	0284.5	044.5	63.33	
278.0	000.2250	0213.8	018.6	138.4	007.4000	0283.2	044.4	63.30	
279.0	000.2250	0213.1	018.6	138.1	007.4000	0283.2	044.2	63.38	
280.0	000.2250	0213.0	018.6	137.8	007.4000	0283.2	044.0	63.47	
281.0	000.2250	0211.3	018.5	137.4	007.4000	0283.6	043.9	63.54	
282.0	000.2250	0208.7	018.4	136.9	007.4000	0283.0	043.8	63.56	

Azimuth (degrees)	ERP (kW)	HAAT (m)	Dist (km)	Azimuth (degrees)	ERP (kW)	HAAT (m)	Dist (km)	Actual (dBu)
283.0	000.2250	0205.9	018.3	136.5	007.4000	0282.4	043.7	63.58
284.0	000.2250	0202.1	018.1	136.0	007.4000	0281.6	043.7	63.56
285.0	000.2250	0201.6	018.1	135.7	007.4000	0282.1	043.5	63.64
286.0	000.2250	0203.5	018.2	135.4	007.4000	0282.2	043.3	63.75
287.0	000.2250	0205.7	018.3	135.1	007.4000	0282.4	043.1	63.86
288.0	000.2250	0209.9	018.5	134.8	007.4000	0282.3	042.7	63.99
289.0	000.2250	0211.0	018.5	134.4	007.4000	0282.0	042.6	64.06
290.0	000.2250	0211.6	018.5	134.0	007.4000	0281.4	042.4	64.11
291.0	000.2250	0211.9	018.6	133.7	007.4000	0281.0	042.3	64.16
292.0	000.2250	0212.5	018.6	133.3	007.4000	0280.6	042.1	64.21
293.0	000.2250	0212.9	018.6	132.9	007.4000	0279.9	042.0	64.25
294.0	000.2250	0214.7	018.7	132.5	007.4000	0279.2	041.8	64.31
295.0	000.2250	0213.9	018.6	132.0	007.4000	0278.9	041.7	64.33
296.0	000.2250	0215.5	018.7	131.6	007.4000	0278.4	041.6	64.38
297.0	000.2250	0211.3	018.5	131.1	007.4000	0277.1	041.7	64.30
298.0	000.2250	0207.7	018.4	130.6	007.4000	0275.6	041.7	64.22
299.0	000.2250	0204.9	018.3	130.2	007.4000	0274.8	041.8	64.18
300.0	000.2250	0203.8	018.2	129.7	007.4000	0274.2	041.8	64.16
301.0	000.2250	0200.4	018.1	129.3	007.4000	0273.2	041.9	64.08
302.0	000.2250	0201.4	018.1	128.9	007.4000	0272.4	041.8	64.10
303.0	000.2250	0202.6	018.2	128.4	007.4000	0271.4	041.7	64.11
304.0	000.2250	0203.2	018.2	128.0	007.4000	0270.2	041.6	64.09
305.0	000.2250	0206.1	018.3	127.6	007.4000	0269.1	041.5	64.12
306.0	000.2250	0210.4	018.5	127.1	007.4000	0268.0	041.3	64.17
307.0	000.2250	0209.6	018.5	126.7	007.4000	0266.9	041.3	64.13
308.0	000.2250	0207.7	018.4	126.3	007.4000	0265.6	041.4	64.05
309.0	000.2250	0209.2	018.4	125.8	007.4000	0264.6	041.3	64.04
310.0	000.2250	0206.5	018.3	125.4	007.4000	0263.3	041.5	63.93
311.0	000.2250	0205.3	018.3	124.9	007.4000	0261.1	041.6	63.83
312.0	000.2250	0206.5	018.3	124.5	007.4000	0259.6	041.6	63.78
313.0	000.2250	0208.5	018.4	124.0	007.4000	0258.7	041.5	63.77
314.0	000.2250	0205.0	018.3	123.6	007.4000	0258.3	041.7	63.67
315.0	000.2250	0201.1	018.1	123.3	007.4000	0257.5	041.9	63.54
316.0	000.2250	0198.8	018.0	122.9	007.4000	0256.6	042.1	63.44
317.0	000.2250	0199.6	018.0	122.4	007.4000	0255.7	042.1	63.39
318.0	000.2250	0202.7	018.2	122.0	007.4000	0254.7	042.1	63.38
319.0	000.2250	0205.2	018.3	121.5	007.4000	0254.6	042.1	63.38
320.0	000.2250	0205.7	018.3	121.1	007.4000	0253.9	042.2	63.33
321.0	000.2241	0207.9	018.4	120.7	007.4000	0252.1	042.2	63.25
322.0	000.2232	0208.3	018.4	120.2	007.4000	0250.2	042.3	63.13
323.0	000.2223	0206.9	018.3	119.9	007.4000	0249.3	042.5	63.02
324.0	000.2214	0207.9	018.3	119.5	007.4000	0248.5	042.6	62.95
325.0	000.2205	0210.9	018.4	119.0	007.4000	0249.3	042.6	62.96
326.0	000.2201	0207.5	018.3	118.7	007.4000	0251.4	042.9	62.91
327.0	000.2192	0205.5	018.2	118.4	007.4000	0252.2	043.2	62.83
328.0	000.2183	0204.9	018.1	118.1	007.4000	0251.6	043.4	62.72
329.0	000.2174	0202.3	018.0	117.8	007.4000	0250.9	043.6	62.58
330.0	000.2165	0200.6	017.9	117.5	007.4000	0251.1	043.9	62.49
331.0	000.2143	0199.7	017.8	117.2	007.4000	0251.6	044.1	62.40
332.0	000.2121	0199.3	017.7	117.0	007.4000	0250.9	044.3	62.28
333.0	000.2095	0199.2	017.7	116.7	007.4000	0248.9	044.6	62.11

Azimuth (degrees)	ERP (kW)	HAAT (m)	Dist (km)		Azimuth (degrees)	ERP (kW)	HAAT (m)	Dist (km)	Actual (dBu)
334.0	000.2074	0201.0	017.7		116.3	007.4000	0246.0	044.7	61.94
335.0	000.2052	0206.4	017.9		115.9	007.4000	0243.6	044.8	61.84
336.0	000.2031	0210.1	018.0		115.5	007.4000	0242.2	044.9	61.74
337.0	000.2009	0211.7	018.0		115.2	007.4000	0240.8	045.1	61.60
338.0	000.1984	0213.4	018.0		114.9	007.4000	0239.4	045.3	61.47
339.0	000.1963	0216.7	018.1		114.5	007.4000	0237.8	045.4	61.34
340.0	000.1942	0221.3	018.3		114.1	007.4000	0235.5	045.5	61.20
341.0	000.1929	0230.2	018.6		113.5	007.4000	0233.9	045.5	61.13
342.0	000.1913	0231.1	018.6		113.2	007.4000	0233.3	045.8	61.01
343.0	000.1900	0225.2	018.3		113.2	007.4000	0233.3	046.2	60.83
344.0	000.1884	0222.9	018.2		113.1	007.4000	0233.2	046.5	60.69
345.0	000.1867	0222.1	018.1		112.9	007.4000	0232.9	046.8	60.56
346.0	000.1855	0222.8	018.1		112.7	007.4000	0232.2	047.1	60.43
347.0	000.1843	0223.7	018.1		112.4	007.4000	0231.8	047.3	60.31
348.0	000.1827	0225.9	018.2		112.2	007.4000	0231.2	047.6	60.19
349.0	000.1810	0228.1	018.2		111.9	007.4000	0230.5	047.8	60.06
350.0	000.1798	0230.6	018.3		111.6	007.4000	0229.8	048.0	59.94
351.0	000.1786	0234.8	018.4		111.3	007.4000	0228.4	048.2	59.80
352.0	000.1774	0239.2	018.6		111.0	007.4000	0226.8	048.4	59.65
353.0	000.1758	0244.1	018.7		110.6	007.4000	0225.3	048.7	59.50
354.0	000.1746	0247.0	018.8		110.4	007.4000	0224.0	048.9	59.34
355.0	000.1734	0249.0	018.8		110.2	007.4000	0222.8	049.2	59.18
356.0	000.1723	0251.1	018.9		109.9	007.4000	0221.8	049.5	59.02
357.0	000.1711	0254.9	019.0		109.7	007.4000	0220.5	049.7	58.86
358.0	000.1695	0256.5	019.0		109.5	007.4000	0220.0	050.0	58.72
359.0	000.1684	0259.6	019.1		109.3	007.4000	0219.4	050.3	58.58
000.0	000.1672	0263.2	019.2		109.1	007.4000	0219.4	050.6	58.47
001.0	000.1653	0266.7	019.3		108.9	007.4000	0219.5	050.9	58.36
002.0	000.1637	0264.9	019.2		108.9	007.4000	0219.5	051.2	58.21
003.0	000.1618	0264.3	019.1		108.8	007.4000	0219.6	051.6	58.08
004.0	000.1599	0264.5	019.0		108.8	007.4000	0219.7	051.9	57.95
005.0	000.1584	0262.4	018.9		108.8	007.4000	0219.6	052.3	57.81
006.0	000.1565	0265.2	018.9		108.7	007.4000	0219.9	052.6	57.69

11-30-2016

Terrain Data: NED 03 SEC

FMOver Analysis

WVIA-FM BLED20081107AEO

WWPJ

Channel = 210B

Max ERP = 7.4 kW

RCAMSL = 761 m

N. Lat. 41 10 55.0

W. Lng. 75 52 17.0

Protected

60 dBu

Channel = 208A

Max ERP = 0.225 kW

RCAMSL = 473 m

N. Lat. 40 51 33.8

W. Lng. 75 18 04.4

Interfering

100 dBu

Azimuth (degrees)	ERP (kW)	HAAT (m)	Dist (km)	Azimuth (degrees)	ERP (kW)	HAAT (m)	Dist (km)	Actual (dBu)	IX (km)
067.0	007.4000	0184.4	039.3	347.4	000.1836	0224.7	052.4	41.92	
068.0	007.4000	0189.1	039.7	347.9	000.1827	0225.8	051.8	42.19	
069.0	007.4000	0189.9	039.8	348.1	000.1824	0226.1	051.1	42.46	
070.0	007.4000	0192.6	040.0	348.5	000.1819	0226.8	050.5	42.75	
071.0	007.4000	0197.8	040.4	349.1	000.1810	0228.3	049.8	43.05	
072.0	007.4000	0202.8	040.8	349.6	000.1803	0230.0	049.2	43.36	
073.0	007.4000	0203.0	040.8	349.7	000.1802	0230.2	048.5	43.65	
074.0	007.4000	0203.1	040.8	349.8	000.1800	0230.4	047.8	43.94	
075.0	007.4000	0202.7	040.8	349.9	000.1800	0230.4	047.0	44.23	
076.0	007.4000	0200.1	040.6	349.7	000.1802	0230.1	046.3	44.52	
077.0	007.4000	0196.0	040.2	349.3	000.1806	0229.2	045.6	44.79	
078.0	007.4000	0188.3	039.6	348.6	000.1817	0227.1	044.9	45.03	
079.0	007.4000	0186.6	039.5	348.4	000.1820	0226.6	044.2	45.31	
080.0	007.4000	0190.9	039.8	348.8	000.1813	0227.8	043.5	45.65	
081.0	007.4000	0194.1	040.1	349.1	000.1809	0228.5	042.8	45.97	
082.0	007.4000	0193.8	040.1	349.0	000.1810	0228.2	042.1	46.28	
083.0	007.4000	0194.5	040.1	349.1	000.1810	0228.2	041.4	46.59	
084.0	007.4000	0196.1	040.2	349.1	000.1809	0228.6	040.7	46.92	
085.0	007.4000	0198.0	040.4	349.3	000.1807	0229.0	040.0	47.26	
086.0	007.4000	0200.3	040.6	349.4	000.1806	0229.5	039.3	47.61	
087.0	007.4000	0203.8	040.8	349.7	000.1802	0230.1	038.5	47.97	
088.0	007.4000	0206.2	041.0	349.8	000.1801	0230.3	037.8	48.33	
089.0	007.4000	0208.3	041.2	349.8	000.1800	0230.4	037.0	48.68	
090.0	007.4000	0207.9	041.1	349.6	000.1803	0230.0	036.3	49.01	
091.0	007.4000	0209.0	041.2	349.5	000.1804	0229.8	035.6	49.35	
092.0	007.4000	0209.9	041.3	349.4	000.1806	0229.4	034.9	49.69	
093.0	007.4000	0208.8	041.2	348.9	000.1811	0228.0	034.2	49.98	
094.0	007.4000	0208.4	041.2	348.6	000.1817	0227.1	033.5	50.30	
095.0	007.4000	0206.3	041.0	348.0	000.1827	0225.9	032.9	50.60	
096.0	007.4000	0201.3	040.6	346.9	000.1844	0223.6	032.3	50.83	
097.0	007.4000	0200.2	040.6	346.3	000.1851	0223.3	031.7	51.17	
098.0	007.4000	0202.0	040.7	346.1	000.1854	0223.0	031.0	51.55	
099.0	007.4000	0202.9	040.8	345.7	000.1859	0222.5	030.3	51.92	

Azimuth (degrees)	ERP (kW)	HAAT (m)	Dist (km)	Azimuth (degrees)	ERP (kW)	HAAT (m)	Dist (km)	Actual (dBu)
100.0	007.4000	0206.8	041.1	345.7	000.1859	0222.4	029.5	52.38
101.0	007.4000	0211.7	041.4	345.7	000.1859	0222.5	028.7	52.87
102.0	007.4000	0216.1	041.8	345.7	000.1859	0222.4	027.9	53.37
103.0	007.4000	0219.0	042.0	345.3	000.1863	0222.2	027.2	53.86
104.0	007.4000	0219.7	042.0	344.7	000.1873	0222.4	026.5	54.34
105.0	007.4000	0220.3	042.1	343.9	000.1885	0222.9	025.9	54.83
106.0	007.4000	0221.1	042.1	343.2	000.1898	0224.7	025.2	55.39
107.0	007.4000	0220.2	042.1	342.1	000.1911	0230.5	024.7	56.05
108.0	007.4000	0221.1	042.1	341.2	000.1926	0231.4	024.0	56.57
109.0	007.4000	0219.4	042.0	339.9	000.1944	0220.7	023.5	56.58
110.0	007.4000	0222.0	042.2	339.0	000.1962	0217.0	022.8	56.98
111.0	007.4000	0226.9	042.5	338.4	000.1975	0214.3	022.1	57.50
112.0	007.4000	0230.7	042.8	337.6	000.1995	0212.5	021.3	58.03
113.0	007.4000	0233.1	042.9	336.4	000.2022	0210.9	020.7	58.52
114.0	007.4000	0235.2	043.1	335.1	000.2050	0207.0	020.1	58.90
115.0	007.4000	0240.1	043.4	334.0	000.2073	0201.1	019.4	59.28
116.0	007.4000	0244.0	043.7	332.7	000.2104	0199.5	018.7	59.81
117.0	007.4000	0251.0	044.1	331.5	000.2132	0199.4	017.9	60.53
118.0	007.4000	0251.3	044.1	329.5	000.2170	0202.0	017.5	61.08
119.0	007.4000	0249.4	044.0	327.0	000.2191	0205.5	017.2	61.51
120.0	007.4000	0249.5	044.0	324.7	000.2208	0210.7	016.9	62.05
121.0	007.4000	0253.6	044.3	322.6	000.2226	0207.3	016.3	62.40
122.0	007.4000	0254.7	044.4	320.1	000.2249	0205.8	016.0	62.65
123.0	007.4000	0256.9	044.5	317.6	000.2250	0201.4	015.6	62.75
124.0	007.4000	0258.6	044.6	314.8	000.2250	0201.6	015.4	62.99
125.0	007.4000	0261.4	044.8	312.0	000.2250	0206.6	015.1	63.47
126.0	007.4000	0265.0	045.0	309.1	000.2250	0209.0	014.8	63.62
127.0	007.4000	0267.7	045.2	306.0	000.2250	0210.5	014.6	63.90
128.0	007.4000	0270.2	045.4	302.9	000.2250	0202.5	014.5	63.71
129.0	007.4000	0272.7	045.5	299.7	000.2250	0204.6	014.4	63.87
130.0	007.4000	0274.6	045.7	296.5	000.2250	0213.9	014.4	64.20
131.0	007.4000	0276.7	045.8	293.3	000.2250	0213.6	014.5	64.08
132.0	007.4000	0278.8	045.9	290.2	000.2250	0211.7	014.7	63.84
133.0	007.4000	0280.2	046.0	287.2	000.2250	0206.8	014.9	63.35
134.0	007.4000	0281.4	046.1	284.4	000.2250	0201.6	015.2	63.10
135.0	007.4000	0282.3	046.2	281.7	000.2250	0209.8	015.6	63.14
136.0	007.4000	0281.6	046.1	279.4	000.2250	0213.1	016.1	62.86
137.0	007.4000	0283.0	046.2	277.0	000.2250	0219.4	016.5	62.76
138.0	007.4000	0283.1	046.2	274.9	000.2250	0216.4	017.1	62.19
139.0	007.4000	0284.7	046.3	272.8	000.2250	0216.6	017.6	61.78
140.0	007.4000	0285.8	046.4	270.9	000.2250	0220.6	018.1	61.48
141.0	007.2396	0288.2	046.4	269.4	000.2250	0220.2	018.8	60.93
142.0	007.0809	0292.0	046.4	267.8	000.2250	0215.0	019.4	60.22
143.0	006.9240	0295.5	046.4	266.4	000.2250	0213.2	020.0	59.61
144.0	006.7688	0297.3	046.4	265.4	000.2216	0218.3	020.8	59.17
145.0	006.6154	0298.7	046.2	264.6	000.2167	0225.0	021.5	58.74
146.0	006.4637	0299.3	046.1	264.0	000.2132	0229.6	022.3	58.23
147.0	006.3138	0297.3	045.7	263.8	000.2122	0232.0	023.2	57.64
148.0	006.1657	0296.5	045.5	263.5	000.2106	0235.5	024.0	57.12
149.0	006.0193	0296.0	045.3	263.2	000.2092	0237.9	024.8	56.57
150.0	005.8747	0297.1	045.1	262.8	000.2068	0241.3	025.6	56.08

Azimuth (degrees)	ERP (kW)	HAAT (m)	Dist (km)	Azimuth (degrees)	ERP (kW)	HAAT (m)	Dist (km)	Actual (dBu)
151.0	005.8892	0301.5	045.4	261.6	000.1995	0256.9	026.2	55.99
152.0	005.9038	0304.3	045.6	260.6	000.1943	0264.3	026.9	55.65
153.0	005.9183	0304.5	045.6	260.1	000.1912	0264.4	027.7	55.09
154.0	005.9329	0305.1	045.7	259.5	000.1866	0262.1	028.4	54.43
155.0	005.9475	0307.6	045.9	258.8	000.1805	0257.4	029.2	53.69
156.0	005.9621	0310.1	046.0	258.1	000.1748	0258.6	029.9	53.15
157.0	005.9767	0311.8	046.2	257.6	000.1706	0263.1	030.7	52.75
158.0	005.9913	0311.3	046.2	257.4	000.1688	0266.5	031.5	52.38
159.0	006.0060	0307.1	045.9	257.6	000.1704	0263.5	032.3	51.90
160.0	006.0207	0304.3	045.8	257.6	000.1710	0262.6	033.1	51.48
161.0	006.1374	0303.9	045.9	257.2	000.1679	0268.1	033.9	51.20
162.0	006.2552	0301.6	045.9	257.1	000.1666	0270.0	034.7	50.83
163.0	006.3741	0298.0	045.9	257.1	000.1666	0269.9	035.5	50.44
164.0	006.4942	0293.8	045.8	257.2	000.1673	0269.0	036.3	50.05
165.0	006.6154	0290.5	045.7	257.2	000.1675	0268.8	037.1	49.67
166.0	006.7377	0288.9	045.8	257.1	000.1666	0269.9	037.9	49.31
167.0	006.8611	0286.5	045.8	257.1	000.1665	0270.0	038.7	48.94
168.0	006.9856	0283.0	045.7	257.2	000.1675	0268.8	039.5	48.56
169.0	007.1113	0283.7	045.9	256.9	000.1655	0271.3	040.3	48.23
170.0	007.2381	0286.2	046.2	256.6	000.1628	0272.8	041.1	47.83
171.0	007.2542	0290.2	046.5	256.3	000.1606	0271.3	041.9	47.36
172.0	007.2703	0293.9	046.8	256.0	000.1588	0269.1	042.8	46.87
173.0	007.2865	0296.7	047.0	255.9	000.1579	0267.7	043.6	46.44
174.0	007.3026	0297.0	047.0	256.0	000.1586	0268.7	044.4	46.15
175.0	007.3188	0298.3	047.1	256.0	000.1588	0269.0	045.3	45.81
176.0	007.3350	0303.3	047.5	255.8	000.1571	0266.3	046.1	45.31
177.0	007.3512	0303.1	047.5	256.0	000.1584	0268.5	046.9	45.09
178.0	007.3675	0299.8	047.3	256.4	000.1615	0272.2	047.7	44.98
179.0	007.3837	0299.5	047.3	256.6	000.1631	0272.8	048.5	44.72
180.0	007.4000	0298.1	047.2	256.9	000.1652	0271.6	049.3	44.42
181.0	007.4000	0294.6	047.0	257.4	000.1689	0266.3	050.0	44.04
182.0	007.4000	0291.9	046.8	257.8	000.1722	0260.9	050.8	43.64
183.0	007.4000	0291.4	046.8	258.1	000.1744	0258.9	051.6	43.31
184.0	007.4000	0294.0	046.9	258.1	000.1749	0258.5	052.4	42.97
185.0	007.4000	0297.4	047.2	258.2	000.1752	0258.4	053.3	42.63
186.0	007.4000	0302.6	047.5	258.1	000.1746	0258.7	054.1	42.27