



April 3, 2013

On Behalf of Spokane Public Radio

Auction 83 FM LPFM Preclusion Showing:

Attachment A contains a map of the proposed translator site plotted on a map of the Spokane grid and its buffer. Attachment B is the FCC grid study showing the LPFM preclusions points within the Spokane grid. The proposed Coeur D' Alene site is located to the northeast, within the 39 km buffer of the Spokane grid as shown in the attachment. Based on the 30' by 30' grid the sacred coordinates of the northeast grid point corner are 47-55-32 N. by 117-09-30 W. The proposed site coordinates are 47-41-47 N. by 116-45-21 W. The distance between these sites is 39.47 km. The required distance under Section 73.807 (2) (C) is 32 kilometers; therefore there is a clear space or margin of 7.5 kilometers, as the channel study printout in Attachment C shows.

Proposals in spectrum limited markets 50 and under are required to provide a transmitter site LPFM preclusion study. While this proposal is in the 93 ARB market, we have presented a transmitter study as additional information. The reader can refer to attachment D to see that based on a co to 1st adjacent study there are 4 usable LPFM channels, therefore the proposed channel will not conflict with the possibility of LPFM stations at the site within the Appendix A, spectrum limited market. Attachment E is a certification of my credentials for this work.

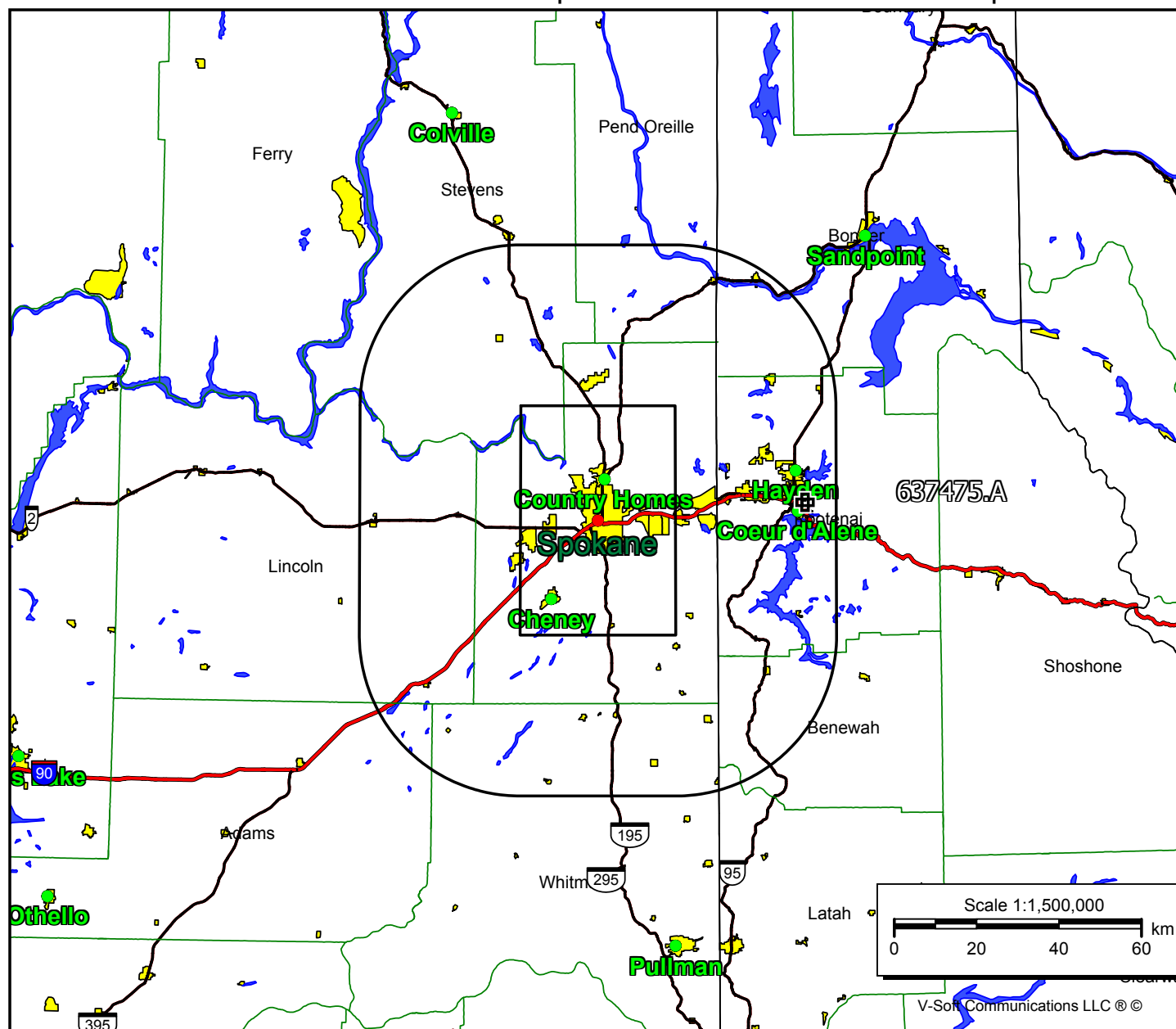
Doug Vernier, Senior Engineer
Doug Vernier Telecommunications,
V-Soft Communication

Spokane Grid with Buffer and Proposed Site

637475.A

BNPFT20030317AGY
 Latitude: 47-41-47 N
 Longitude: 116-45-21 W
 ERP: 0.05 kW
 Channel: 262
 Frequency: 100.3 MHz
 AMSL Height: 888.0 m
 Elevation: 878.0 m
 Horiz. Pattern: Omni
 Vert. Pattern: No
 Prop Model: None

V Doug Vernier
 401 Main Street, Suite 213
 Cedar Falls, Iowa 50613
 Telecommunication Consultants

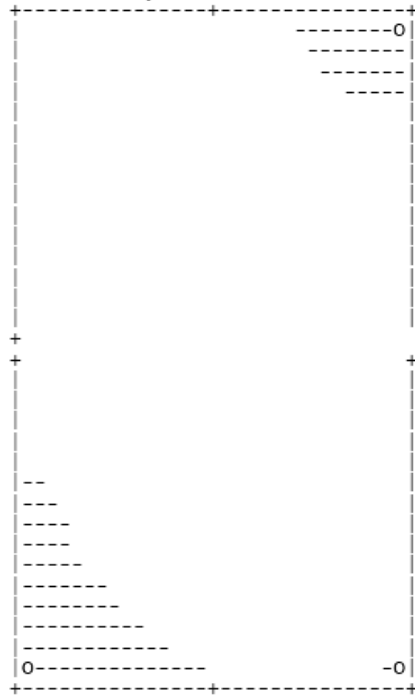


Spokane, WA, Channel is 262
 Latitude 47-39-32
 Longitude 117-25-30
 Grid Size 31 x 31
 Micro FM 100 Watts at 30m HAAT
 Co-Channel and 1st Adjacent Protected
 2nd Adjacent Channel Not Protected
 3rd Adjacent Channel Not Protected
 I.F. Not Protected
 TV Channel 6 Protected
 CP Records Protected
 APP Records Protected
 FM Translators Protected
 TV Channel 6 Translators/LP Protected
 Auc83 FX App Records Not Protected

Chan	Avail	Chan	Avail	Chan	Avail	Chan	Avail	Chan	Avail
200	0	220	0	240	0	260	0	280	0
201	0	221	0	241	0	261	0	281	0
202	0	222	77	242	0	262	101	282	0
203	0	223	446	243	923	263	409	283	0
204	0	224	0	244	0	264	961	284	0
205	0	225	0	245	0	265	0	285	0
206	166	226	0	246	0	266	0	286	0
207	0	227	961	247	0	267	0	287	961
208	0	228	0	248	0	268	923	288	0
209	0	229	0	249	961	269	0	289	0
210	0	230	0	250	0	270	0	290	0
211	0	231	725	251	0	271	0	291	545
212	0	232	0	252	0	272	0	292	0
213	0	233	0	253	321	273	5	293	0
214	180	234	0	254	0	274	323	294	0
215	0	235	961	255	0	275	0	295	0
216	0	236	0	256	0	276	0	296	0
217	0	237	0	257	597	277	0	297	92
218	212	238	0	258	166	278	961	298	961
219	0	239	961	259	0	279	0	299	0
								300	0

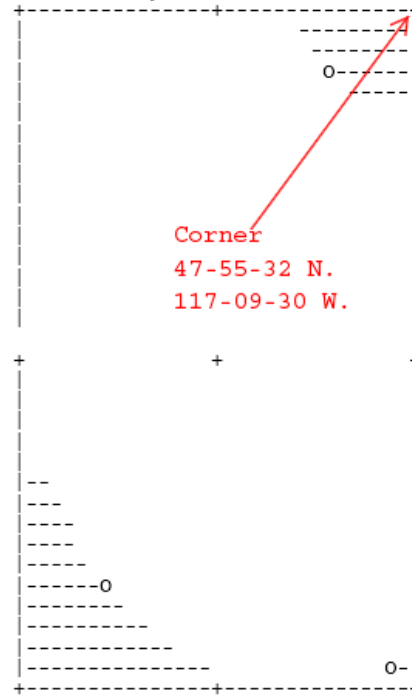
 Total 13899

Spokane, WA
Latitude 47-39-32
Longitude 117-25-30
Least preclusive siting
Availability of Channel 262 (x)



Point #001 at 47-24-32 117-10-30
Point #031 at 47-54-32 117-10-30
Point #931 at 47-24-32 117-40-30

Spokane, WA
Latitude 47-39-32
Longitude 117-25-30
Most preclusive siting
Availability of Channel 262 (x)



Point #749 at 47-28-32 117-34-30
Point #215 at 47-52-32 117-16-30
Point #032 at 47-24-32 117-11-30

39.47 km (32km FCC)

Site

47-41-47 N.
116-45-21W.

Corner

47-55-32 N.
117-09-30 W.

Contour-to-Contour Allocation Study
 Spokane Public Radio
 CH# 262D - 100.3 MHz, Pwr= 0.05 kW, HAAT= 104.8 M, COR= 888 M
 Average Protected F(50-50)= 8.9 km
 Omni-directional

REFERENCE
 47 41 47.0 N.
 116 45 21.0 W.

DISPLAY DATES
 DATA 03-28-13
 SEARCH 04-03-13

CH CITY	CALL	TYPE STATE	ANT STATE	AZI <--	DIST FILE #	LAT LNG	PWR(kw) HAAT(M)	INT(km) COR(M)	PRO(km) LICENSEE	*IN* (Overlap in km)	*OUT*
260C Spokane	KXLY-FM	CP	NCX WA	255.3 75.1	16.06 BPH20111101AJI	47 39 34.0 116 57 48.0	90.000 643	14.0 1455	93.3 Queenb Radio, Inc.	-10.0	-77.8*
262D Coeur d'alene	637475	APP	_C_ ID	0.0 0.0	0.00 BNPFT20030317AGY	47 41 47.0 116 45 21.0	0.050 105	37.8 888	11.4 Spokane Public Radio, Inc.	-49.1*	-49.1*
260C Spokane	KXLY-FM	LIC	_C_ WA	313.3 133.0	36.60 BMLH19971023KH	47 55 18.0 117 06 48.0	37.000 914	10.3 1813	85.1 Queenb Radio, Inc.	13.9	-49.0*
264D Coeur d'alene	645740	APP	_C_ ID	162.7 342.7	9.36 BNPFT20030317EQI	47 36 57.3 116 43 07.3	0.050 63	0.5 904	12.4 Edgewater Broadcasting, In	0.8	-3.5*
262D Spokane, Etc.	K262AG	LIC	DCN WA	260.0 79.6	42.41 BLFT19980323TD	47 37 43.0 117 18 48.0	0.003 171	20.7 853	5.7 Spokane Radio, Inc.	9.5	1.5
262L1 Spokane	Sacred«		____ WA	310.4 130.1	39.47	47 55 32.0 117 09 30.0	0.100 30	0.0 0	0.0 31.5R	31.5R	8.0M <--
263C3 Troy	KQZB	LIC	NCX ID	187.1 7.0	99.10 BLH20080522ABE	46 48 42.0 116 54 59.0	0.900 487	63.5 1389	41.1 Pacific Empire Radio Corp	22.4	37.5
264D Deer Park	649020	APP	_C_ WA	283.3 102.8	57.58 BNPFT20030317MJJ	47 48 48.0 117 30 23.0	0.019 325	0.3 949	13.1 Northwest Community Radio	44.8	44.0
262B Creston	CBRMFM«	OPE	_HN BC	2.0 182.1	163.43	49 09 56.0 116 40 39.0	0.057 602	76.3 1762	25.3 111.5R	111.5R	51.9M
262C1 Moses Lake	KWIQ-FM	LIC	_CX WA	251.5 69.6	198.29 BLH20050927ACN	47 06 09.0 119 14 26.0	100.000 51	130.7 417	31.0 Mcc Radio, LLC	55.9	136.1

Terrain database is FCC NGDC 30 Sec , R= 73.215 qualifying spacings or FCC minimum Spacings in KM, M= Margin in KM
 In & Out distances between contours are shown at closest points. Reference zone= west Zone, Co to 3rd adjacent.
 All separation margins (if shown) include rounding
 Ant Column: (D= DA Standard, Z= DA 73.215, N= Not DA 73.215, _= Omni), Polarization (C,H,V,E), Beamtilt(Y,N,X)
 "*"affixed to 'IN' or 'OUT' values = site inside protected contour.
 « = Station meets FCC minimum distance spacing for its class.

HOW TO READ THE FM COMPUTER PRINT-OUT

Translator Reference Station

The computer printout should be self-explanatory for the most part. The parameters of the station being checked, (reference station) are printed in the heading. The 60 dBu protected contour is predicted from the Commission's F(50-50) table. Contour distances are in kilometers and are predicted using the Commission's TVFMINT FORTRAN subroutine. When interference contour distances are less than 16 kilometers the F(50-50) tables are used. If signal contour distances are less than 1.6 km the free-space equation is used.

All distances are derived by the method detailed in Sec. 73.208 of the Rules and Regulations as amended in Docket 80-90. The column labeled "* OUT *" shows the greatest distance in kilometers of overlap (or smallest distance of clearance) between the reference station's interference contour and the database station's protected contour. Negative distance figures in this column indicate outgoing contour overlap. Since translators are able to receive interference there is no "In" or incoming column in this report.

Listed antenna heights and power are the specific antenna heights and power from the FCC database.

Under the "AZI" column, the first row of numbers indicate the True North azimuths from the reference station toward the database stations, while the numbers in the second row indicate the reverse bearings from the database stations to the reference station. Bearings are calculated using spherical trigonometry.

The columns labeled "INT" and "PRO" contain the distance in kilometers of the appropriate interference contour and the protected contour of a data base station.

For I.F. relationships the minimum spacings the "OUT" columns change its significance. The letter "R" stands for the minimum **required** distance in kilometers, while the letter "M" in the next column displays the **available clear space** separation in kilometers. Minimum separation distances when displayed are taken from Sec 73.207 of the rules as amended. Canadian and Mexican separation distances, U/D ratios and protected contour values are from the US/Mexican Working Agreement and the US/Canada Working Agreement".

The first three letters of the "TYPE" column identify the current FCC status of the stations. The fourth letter will be a "D" if the facility is directional. "Z" indicates a 73.215 directional. An "N" indicates it is a 73.215 station that operates with an omni-directional antenna. The fifth letter will be an E, H or V depending on the type of antenna polarization. The sixth letter will be a "Y" if the antenna uses beam tilt or an "X" if the commission is not sure, otherwise it will be an "N" or left blank.

Study Showing LPFM Available Channels at Transmitter Site
Spokane Public Radio

REFERENCE		DISPLAY DATES
47 41 47.0 N.	Class L1 Preclusions	DATA 01-18-13
116 45 21.0 W.	Current Spacings to 1st Adj.	SEARCH 01-18-13

Call	Channel	Location	Azi	Dist	FCC	Margin
--- Channel 201 88.1 MHz. ---						
KWIS	APP-D 202C2	Plummer	ID 191.1	43.42	80.0	-36.6
KWIS	LIC-D 202C3	Plummer	ID 175.7	41.18	67.0	-25.8
KYRS	LIC-D 201C0	Medical Lake	WA 300.9	106.54	122.0	-15.5
K06QF-D	LI -D 06 D	Heron	MT 70.1	86.25	98.0	-11.7
--- Channel 202 88.3 MHz. ---						
KWIS	APP-D 202C2	Plummer	ID 191.1	43.42	91.0	-47.6
KWIS	LIC-D 202C3	Plummer	ID 175.7	41.18	78.0	-36.8
K06QF-D	LI -D 06 D	Heron	MT 70.1	86.25	97.0	-10.7
KYRS	LIC-D 201C0	Medical Lake	WA 300.9	106.54	111.0	-4.5
--- Channel 203 88.5 MHz. ---						
KAGU	LIC 204C1	Spokane	WA 252.6	42.59	100.0	-57.4
KWIS	APP-D 202C2	Plummer	ID 191.1	43.42	80.0	-36.6
KWIS	LIC-D 202C3	Plummer	ID 175.7	41.18	67.0	-25.8
K06QF-D	LI -D 06 D	Heron	MT 70.1	86.25	95.0	-8.7
--- Channel 204 88.7 MHz. ---						
KAGU	LIC 204C1	Spokane	WA 252.6	42.59	111.0	-68.4
K06QF-D	LI -D 06 D	Heron	MT 70.1	86.25	94.0	-7.7
--- Channel 205 88.9 MHz. ---						
KAGU	LIC 204C1	Spokane	WA 252.6	42.59	100.0	-57.4
K06QF-D	LI -D 06 D	Heron	MT 70.1	86.25	93.0	-6.7
--- Channel 206 89.1 MHz. ---						
KLGG	LIC-D 207C3	Kellogg	ID 116.0	51.41	67.0	-15.6
K06QF-D	LI -D 06 D	Heron	MT 70.1	86.25	91.0	-4.7
--- Channel 207 89.3 MHz. ---						
KEWU-FM	LIC 208C1	Cheney	WA 252.3	42.74	100.0	-57.3
KLGG	LIC-D 207C3	Kellogg	ID 116.0	51.41	78.0	-26.6
K06QF-D	LI -D 06 D	Heron	MT 70.1	86.25	91.0	-4.7
--- Channel 208 89.5 MHz. ---						
KEWU-FM	LIC 208C1	Cheney	WA 252.3	42.74	111.0	-68.3
KLGG	LIC-D 207C3	Kellogg	ID 116.0	51.41	67.0	-15.6
K06QF-D	LI -D 06 D	Heron	MT 70.1	86.25	91.0	-4.7
--- Channel 209 89.7 MHz. ---						
KEWU-FM	LIC 208C1	Cheney	WA 252.3	42.74	100.0	-57.3
KYMS	LIC-D 210C1	Rathdrum	ID 18.8	46.71	100.0	-53.3
K06QF-D	LI -D 06 D	Heron	MT 70.1	86.25	91.0	-4.7
--- Channel 210 89.9 MHz. ---						
KYMS	LIC-D 210C1	Rathdrum	ID 18.8	46.71	111.0	-64.3

Call	Channel	Location		Azi	Dist	FCC	Margin
K06QF-D	LI -D 06 D	Heron	MT	70.1	86.25	91.0	-4.7
--- Channel 211 90.1 MHz. ---							
KYMS	LIC-D 210C1	Rathdrum	ID	18.8	46.71	100.0	-53.3
K06QF-D	LI -D 06 D	Heron	MT	70.1	86.25	91.0	-4.7
--- Channel 212 90.3 MHz. ---							
KPBZ	LIC 212A	Spokane	WA	283.3	57.75	67.0	-9.3
K06QF-D	LI -D 06 D	Heron	MT	70.1	86.25	90.0	-3.7
--- Channel 213 90.5 MHz. ---							
K06QF-D	LI -D 06 D	Heron	MT	70.1	86.25	90.0	-3.7
--- Channel 214 90.7 MHz. ---							
KZNP	APP 214C2	Mullan	ID	107.7	86.85	91.0	-4.2
K06QF-D	LI -D 06 D	Heron	MT	70.1	86.25	90.0	-3.7
--- Channel 215 90.9 MHz. ---							
KPBX-FM	LIC 216C	Spokane	WA	240.4	28.32	120.0	-91.7
K06QF-D	LI -D 06 D	Heron	MT	70.1	86.25	90.0	-3.7
--- Channel 216 91.1 MHz. ---							
KPBX-FM	LIC 216C	Spokane	WA	240.4	28.32	130.0	-101.7
K06QF-D	LI -D 06 D	Heron	MT	70.1	86.25	89.0	-2.7
--- Channel 217 91.3 MHz. ---							
KPBX-FM	LIC 216C	Spokane	WA	240.4	28.32	120.0	-91.7
K06QF-D	LI -D 06 D	Heron	MT	70.1	86.25	89.0	-2.7
--- Channel 218 91.5 MHz. ---							
KUBS	LIC 218A	Newport	WA	335.7	58.90	67.0	-8.1
K06QF-D	LI -D 06 D	Heron	MT	70.1	86.25	89.0	-2.7
--- Channel 219 91.7 MHz. ---							
K220BX	LIC-D 220D	Coeur D'alene	ID	167.2	3.38	13.0	-9.6
KSFC	LIC-N 220C3	Spokane	WA	283.3	57.75	67.0	-9.3
K06QF-D	LI -D 06 D	Heron	MT	70.1	86.25	89.0	-2.7
--- Channel 220 91.9 MHz. ---							
K220BX	LIC-D 220D	Coeur D'alene	ID	167.2	3.38	24.0	-20.6
KSFC	LIC-N 220C3	Spokane	WA	283.3	57.75	78.0	-20.3
KXJO	LIC-N 221A	St. Maries	ID	160.9	42.43	56.0	-13.6
K06QF-D	LI -D 06 D	Heron	MT	70.1	86.25	89.0	-2.7
--- Channel 221 92.1 MHz. ---							
KXJO	LIC-N 221A	St. Maries	ID	160.9	42.43	67.0	-24.6
K220BX	LIC-D 220D	Coeur D'alene	ID	167.2	3.38	13.0	-9.6
KSFC	LIC-N 220C3	Spokane	WA	283.3	57.75	67.0	-9.3
--- Channel 222 92.3 MHz. ---							
KXJO	LIC-N 221A	St. Maries	ID	160.9	42.43	56.0	-13.6
K223AN	LIC-D 223D	Coeur D'alene	ID	26.5	4.38	13.0	-8.6

Call	Channel	Location		Azi	Dist	FCC	Margin
--- Channel 223 92.5 MHz. ---							
K223AN	LIC-D 223D	Coeur D'alene	ID	26.5	4.38	24.0	-19.6
--- Channel 224 92.7 MHz. ---							
KZZU-FM	LIC 225C	Spokane	WA	254.7	42.27	120.0	-77.7
K223AN	LIC-D 223D	Coeur D'alene	ID	26.5	4.38	13.0	-8.6
--- Channel 225 92.9 MHz. ---							
KZZU-FM	LIC 225C	Spokane	WA	254.7	42.27	130.0	-87.7
--- Channel 226 93.1 MHz. ---							
KZZU-FM	LIC 225C	Spokane	WA	254.7	42.27	120.0	-77.7
637421	APP 227D	Coeur D' Alene	ID	0.0	0.00	13.0	-13.0
--- Channel 227 93.3 MHz. ---							
637421	APP 227D	Coeur D' Alene	ID	0.0	0.00	24.0	-24.0
--- Channel 228 93.5 MHz. ---							
KDRK-FM	LIC 229C	Spokane	WA	240.3	28.22	120.0	-91.8
637421	APP 227D	Coeur D' Alene	ID	0.0	0.00	13.0	-13.0
--- Channel 229 93.7 MHz. ---							
KDRK-FM	LIC 229C	Spokane	WA	240.3	28.22	130.0	-101.8
--- Channel 230 93.9 MHz. ---							
KDRK-FM	LIC 229C	Spokane	WA	240.3	28.22	120.0	-91.8
--- Channel 231 94.1 MHz. ---							
***** Possible channel *****							
--- Channel 232 94.3 MHz. ---							
KHTQ	LIC-D 233C	Hayden	ID	255.3	16.11	120.0	-103.9
--- Channel 233 94.5 MHz. ---							
KHTQ	LIC-D 233C	Hayden	ID	255.3	16.11	130.0	-113.9
--- Channel 234 94.7 MHz. ---							
KHTQ	LIC-D 233C	Hayden	ID	255.3	16.11	120.0	-103.9
637400	APP 235D	Coeur D' Alene	ID	0.0	0.00	13.0	-13.0
643214	APP 235D	Coeur D Alene	ID	162.7	9.37	13.0	-3.6
--- Channel 235 94.9 MHz. ---							
637400	APP 235D	Coeur D' Alene	ID	0.0	0.00	24.0	-24.0
643214	APP 235D	Coeur D Alene	ID	162.7	9.37	24.0	-14.6
629191	APP 235D	Post Falls	ID	254.7	15.38	24.0	-8.6
636830	APP 235D	Post Falls	ID	254.7	15.38	24.0	-8.6
--- Channel 236 95.1 MHz. ---							
KPND	LIC-D 237C	Sandpoint	ID	341.0	45.01	120.0	-75.0
KPND	RSV-A 237C	Sandpoint	ID	42.3	74.44	120.0	-45.6
637400	APP 235D	Coeur D' Alene	ID	0.0	0.00	13.0	-13.0

Call	Channel	Location		Azi	Dist	FCC	Margin
643214	APP 235D	Coeur D Alene	ID	162.7	9.37	13.0	-3.6
--- Channel 237 95.3 MHz. ---							
KPND	LIC-D 237C	Sandpoint	ID	341.0	45.01	130.0	-85.0
KPND	RSV-A 237C	Sandpoint	ID	42.3	74.44	130.0	-55.6
--- Channel 238 95.5 MHz. ---							
KPND	LIC-D 237C	Sandpoint	ID	341.0	45.01	120.0	-75.0
KPND	RSV-A 237C	Sandpoint	ID	42.3	74.44	120.0	-45.6
637378	APP 239D	Coeur D' Alene	ID	0.0	0.00	13.0	-13.0
645432	APP 239D	Coeur D Alene	ID	162.7	9.37	13.0	-3.6
--- Channel 239 95.7 MHz. ---							
637378	APP 239D	Coeur D' Alene	ID	0.0	0.00	24.0	-24.0
645432	APP 239D	Coeur D Alene	ID	162.7	9.37	24.0	-14.6
637047	APP 239D	Post Falls	ID	254.7	15.38	24.0	-8.6
--- Channel 240 95.9 MHz. ---							
KIXZ-FM	LIC 241C	Opportunity	WA	240.3	28.22	120.0	-91.8
KIXZ-FM	CP 241C	Opportunity	WA	240.3	28.22	120.0	-91.8
637378	APP 239D	Coeur D' Alene	ID	0.0	0.00	13.0	-13.0
645432	APP 239D	Coeur D Alene	ID	162.7	9.37	13.0	-3.6
--- Channel 241 96.1 MHz. ---							
KIXZ-FM	LIC 241C	Opportunity	WA	240.3	28.22	130.0	-101.8
KIXZ-FM	CP 241C	Opportunity	WA	240.3	28.22	130.0	-101.8
--- Channel 242 96.3 MHz. ---							
KIXZ-FM	LIC 241C	Opportunity	WA	240.3	28.22	120.0	-91.8
KIXZ-FM	CP 241C	Opportunity	WA	240.3	28.22	120.0	-91.8
637353	APP 243D	Coeur D' Alene	ID	0.0	0.00	13.0	-13.0
639410	APP 243D	Coeur D Alene	ID	162.7	9.37	13.0	-3.6
--- Channel 243 96.5 MHz. ---							
637353	APP 243D	Coeur D' Alene	ID	0.0	0.00	24.0	-24.0
639410	APP 243D	Coeur D Alene	ID	162.7	9.37	24.0	-14.6
--- Channel 244 96.7 MHz. ---							
KEZE	LIC-D 245C2	Spokane	WA	276.2	31.12	80.0	-48.9
637353	APP 243D	Coeur D' Alene	ID	0.0	0.00	13.0	-13.0
639410	APP 243D	Coeur D Alene	ID	162.7	9.37	13.0	-3.6
--- Channel 245 96.9 MHz. ---							
KEZE	LIC-D 245C2	Spokane	WA	276.2	31.12	91.0	-59.9
--- Channel 246 97.1 MHz. ---							
KEZE	LIC-D 245C2	Spokane	WA	276.2	31.12	80.0	-48.9
--- Channel 247 97.3 MHz. ---							
R15085	DEL 248C2	Wallace	ID	101.7	70.86	80.0	-9.1
KTWD	LIC 248C2	Wallace	ID	101.7	70.86	80.0	-9.1
--- Channel 248 97.5 MHz. ---							
R15085	DEL 248C2	Wallace	ID	101.7	70.86	91.0	-20.1

Call	Channel	Location		Azi	Dist	FCC	Margin
KTWD	LIC 248C2	Wallace	ID	101.7	70.86	91.0	-20.1
--- Channel 249 97.7 MHz. ---							
R15085	DEL 248C2	Wallace	ID	101.7	70.86	80.0	-9.1
KTWD	LIC 248C2	Wallace	ID	101.7	70.86	80.0	-9.1
--- Channel 250 97.9 MHz. ---							
KISC	LIC 251C	Spokane	WA	252.6	42.59	120.0	-77.4
--- Channel 251 98.1 MHz. ---							
KISC	LIC 251C	Spokane	WA	252.6	42.59	130.0	-87.4
--- Channel 252 98.3 MHz. ---							
KISC	LIC 251C	Spokane	WA	252.6	42.59	120.0	-77.4
--- Channel 253 98.5 MHz. ---							
***** Possible channel *****							
--- Channel 254 98.7 MHz. ---							
KKZX	LIC 255C	Spokane	WA	254.4	42.18	120.0	-77.8
--- Channel 255 98.9 MHz. ---							
KKZX	LIC 255C	Spokane	WA	254.4	42.18	130.0	-87.8
630231	APP 256D	Couer D'alene	ID	255.7	2.12	13.0	-10.9
--- Channel 256 99.1 MHz. ---							
KKZX	LIC 255C	Spokane	WA	254.4	42.18	120.0	-77.8
630231	APP 256D	Couer D'alene	ID	255.7	2.12	24.0	-21.9
--- Channel 257 99.3 MHz. ---							
630231	APP 256D	Couer D'alene	ID	255.7	2.12	13.0	-10.9
637067	APP 257D	Post Falls	WA	254.7	15.38	24.0	-8.6
KZZL-FM	RSV-A 258C	Pullman	WA	188.3	114.75	120.0	-5.3
--- Channel 258 99.5 MHz. ---							
KZZL-FM	RSV-A 258C	Pullman	WA	188.3	114.75	130.0	-15.3
--- Channel 259 99.7 MHz. ---							
KXLY-FM	CP -N 260C	Spokane	WA	255.3	16.11	120.0	-103.9
KXLY-FM	LIC 260C	Spokane	WA	313.3	36.66	120.0	-83.3
KZZL-FM	RSV-A 258C	Pullman	WA	188.3	114.75	120.0	-5.3
--- Channel 260 99.9 MHz. ---							
KXLY-FM	CP -N 260C	Spokane	WA	255.3	16.11	130.0	-113.9
KXLY-FM	LIC 260C	Spokane	WA	313.3	36.66	130.0	-93.3
--- Channel 261 100.1 MHz. ---							
KXLY-FM	CP -N 260C	Spokane	WA	255.3	16.11	120.0	-103.9
KXLY-FM	LIC 260C	Spokane	WA	313.3	36.66	120.0	-83.3
637475	APP 262D	Coeur D' Alene	ID	0.0	0.00	13.0	-13.0
645740	APP 262D	Coeur D Alene	ID	162.7	9.37	13.0	-3.6

Call	Channel		Location		Azi	Dist	FCC	Margin

--- Channel 262 100.3 MHz. ---								
637475	APP	262D	Coeur D' Alene	ID	0.0	0.00	24.0	-24.0
645740	APP	262D	Coeur D Alene	ID	162.7	9.37	24.0	-14.6
--- Channel 263 100.5 MHz. ---								
637475	APP	262D	Coeur D' Alene	ID	0.0	0.00	13.0	-13.0
645740	APP	262D	Coeur D Alene	ID	162.7	9.37	13.0	-3.6
--- Channel 264 100.7 MHz. ---								
***** Possible channel *****								
--- Channel 265 100.9 MHz. ---								
KEYF-FM	LIC	266C	Cheney	WA	254.4	42.18	120.0	-77.8
--- Channel 266 101.1 MHz. ---								
KEYF-FM	LIC	266C	Cheney	WA	254.4	42.18	130.0	-87.8
--- Channel 267 101.3 MHz. ---								
KEYF-FM	LIC	266C	Cheney	WA	254.4	42.18	120.0	-77.8
641642	APP	268D	Coeur D Alene	ID	255.6	2.12	13.0	-10.9
--- Channel 268 101.5 MHz. ---								
641642	APP	268D	Coeur D Alene	ID	255.6	2.12	24.0	-21.9
637074	APP	268D	Post Falls	ID	254.7	15.38	24.0	-8.6
--- Channel 269 101.7 MHz. ---								
641642	APP	268D	Coeur D Alene	ID	255.6	2.12	13.0	-10.9
KTSL	LIC	270C2	Medical Lake	WA	270.9	73.91	80.0	-6.1
--- Channel 270 101.9 MHz. ---								
KTSL	LIC	270C2	Medical Lake	WA	270.9	73.91	91.0	-17.1
--- Channel 271 102.1 MHz. ---								
DKETB	RSV-A	272C3	Coeur D'alene	ID	254.7	15.38	67.0	-51.6
KICR	LIC	272A	Coeur D'alene	ID	254.7	15.38	56.0	-40.6
KTSL	LIC	270C2	Medical Lake	WA	270.9	73.91	80.0	-6.1
--- Channel 272 102.3 MHz. ---								
DKETB	RSV-A	272C3	Coeur D'alene	ID	254.7	15.38	78.0	-62.6
KICR	LIC	272A	Coeur D'alene	ID	254.7	15.38	67.0	-51.6
--- Channel 273 102.5 MHz. ---								
DKETB	RSV-A	272C3	Coeur D'alene	ID	254.7	15.38	67.0	-51.6
KICR	LIC	272A	Coeur D'alene	ID	254.7	15.38	56.0	-40.6
650260	APP	274D	Coeur D'alene	ID	26.5	4.38	13.0	-8.6
--- Channel 274 102.7 MHz. ---								
650260	APP	274D	Coeur D'alene	ID	26.5	4.38	24.0	-19.6
--- Channel 275 102.9 MHz. ---								

Call	Channel	Location		Azi	Dist	FCC	Margin
KCDA	LIC-Z 276C1	Post Falls	ID	252.6	42.59	100.0	-57.4
650260	APP 274D	Coeur D'alene	ID	26.5	4.38	13.0	-8.6
--- Channel 276 103.1 MHz. ---							
KCDA	LIC-Z 276C1	Post Falls	ID	252.6	42.59	111.0	-68.4
--- Channel 277 103.3 MHz. ---							
KCDA	LIC-Z 276C1	Post Falls	ID	252.6	42.59	100.0	-57.4
637448	APP 278D	Coeur D' Alene	ID	0.0	0.00	13.0	-13.0
R15085	ADD 278C2	Wallace	ID	101.7	70.86	80.0	-9.1
--- Channel 278 103.5 MHz. ---							
637448	APP 278D	Coeur D' Alene	ID	0.0	0.00	24.0	-24.0
R15085	ADD 278C2	Wallace	ID	101.7	70.86	91.0	-20.1
637093	APP 278D	Post Falls	ID	254.7	15.38	24.0	-8.6
650146	APP 278D	Coeur D' Alene	ID	255.3	16.11	24.0	-7.9
--- Channel 279 103.7 MHz. ---							
KBBD	LIC-N 280C1	Spokane	WA	255.6	42.09	100.0	-57.9
637448	APP 278D	Coeur D' Alene	ID	0.0	0.00	13.0	-13.0
R15085	ADD 278C2	Wallace	ID	101.7	70.86	80.0	-9.1
--- Channel 280 103.9 MHz. ---							
KBBD	LIC-N 280C1	Spokane	WA	255.6	42.09	111.0	-68.9
--- Channel 281 104.1 MHz. ---							
KBBD	LIC-N 280C1	Spokane	WA	255.6	42.09	100.0	-57.9
KHTR	LIC 282C1	Pullman	WA	187.0	99.15	100.0	-0.9
--- Channel 282 104.3 MHz. ---							
KGZG-FM	LIC-D 283C1	Newport	WA	335.1	84.65	100.0	-15.4
KHTR	LIC 282C1	Pullman	WA	187.0	99.15	111.0	-11.9
--- Channel 283 104.5 MHz. ---							
KGZG-FM	LIC-D 283C1	Newport	WA	335.1	84.65	111.0	-26.4
KHTR	LIC 282C1	Pullman	WA	187.0	99.15	100.0	-0.9
--- Channel 284 104.7 MHz. ---							
KEEH	LIC-N 285C1	Spokane	WA	252.4	42.74	100.0	-57.3
KGZG-FM	LIC-D 283C1	Newport	WA	335.1	84.65	100.0	-15.4
--- Channel 285 104.9 MHz. ---							
KEEH	LIC-N 285C1	Spokane	WA	252.4	42.74	111.0	-68.3
--- Channel 286 105.1 MHz. ---							
KEEH	LIC-N 285C1	Spokane	WA	252.4	42.74	100.0	-57.3
--- Channel 287 105.3 MHz. ---							
***** Possible channel *****							
--- Channel 288 105.5 MHz. ---							
KZBD	LIC 289C	Spokane	WA	252.3	42.65	120.0	-77.4

Call	Channel	Location		Azi	Dist	FCC	Margin

--- Channel 289 105.7 MHz. ---							
KZBD	LIC	289C	Spokane	WA	252.3	42.65 130.0	-87.4
--- Channel 290 105.9 MHz. ---							
KZBD	LIC	289C	Spokane	WA	252.3	42.65 120.0	-77.4
--- Channel 291 106.1 MHz. ---							
637112	APP	291D	Post Falls	ID	254.7	15.38 24.0	-8.6
--- Channel 292 106.3 MHz. ---							
KSPO	LIC	293A	Dishman	WA	269.9	43.41 56.0	-12.6
--- Channel 293 106.5 MHz. ---							
KSPO	LIC	293A	Dishman	WA	269.9	43.41 67.0	-23.6
KTPO	LIC-N	294C3	Kootenai	ID	17.2	62.05 67.0	-5.0
--- Channel 294 106.7 MHz. ---							
KTPO	LIC-N	294C3	Kootenai	ID	17.2	62.05 78.0	-16.0
KSPO	LIC	293A	Dishman	WA	269.9	43.41 56.0	-12.6
NEW	CP	295L1	Lake City	ID	320.3	3.57 14.0	-10.4
548139	APP	295L1	Hayden	ID	2.1	7.94 14.0	-6.1
--- Channel 295 106.9 MHz. ---							
NEW	CP	295L1	Lake City	ID	320.3	3.57 24.0	-20.4
548139	APP	295L1	Hayden	ID	2.1	7.94 24.0	-16.1
KTPO	LIC-N	294C3	Kootenai	ID	17.2	62.05 67.0	-5.0
--- Channel 296 107.1 MHz. ---							
NEW	CP	295L1	Lake City	ID	320.3	3.57 14.0	-10.4
548139	APP	295L1	Hayden	ID	2.1	7.94 14.0	-6.1
KPKL	LIC	296C3	Deer Park	WA	300.8	73.15 78.0	-4.9
--- Channel 297 107.3 MHz. ---							
632730	APP	298D	Couer D'alene	ID	255.7	2.12 13.0	-10.9
--- Channel 298 107.5 MHz. ---							
632730	APP	298D	Couer D'alene	ID	255.7	2.12 24.0	-21.9
--- Channel 299 107.7 MHz. ---							
KMBI-FM	LIC	300C	Spokane	WA	240.5	28.29 120.0	-91.7
632730	APP	298D	Couer D'alene	ID	255.7	2.12 13.0	-10.9
--- Channel 300 107.9 MHz. ---							
KMBI-FM	LIC	300C	Spokane	WA	240.5	28.29 130.0	-101.7

Declaration:

I, Douglas L. Vernier, declare that I have received training as an engineer from the University of Michigan School of Engineering. That, I have received degrees from the University in the field of Broadcast Telecommunications. That, I have been active in broadcast consulting for over 30 years;

That, I have held a Federal Communications Commission First Class Radiotelephone License continually since 1964. In 1985, this license was reissued by the Commission as a lifetime General Radiotelephone license no. PG-16-16464;

That, I am certified as a Professional Broadcast Engineer (#50258) by the Society of Broadcast Engineers, Indianapolis, Indiana. (Life-time Certification received in 2010);

That, my qualifications are a matter of record with the Federal Communications Commission;

That, I have been retained by Spokane Public Radio to prepare the engineering showings appended hereto;

That, I have prepared these broadcast engineering showings, the technical information contained in same and the facts stated within are true of my knowledge;

That, under penalty of perjury, I declare that the foregoing is correct.

Douglas L. Vernier

A handwritten signature in blue ink, appearing to read "Doug Vernier", with a large, stylized loop at the end.

Executed of April 3, 2013