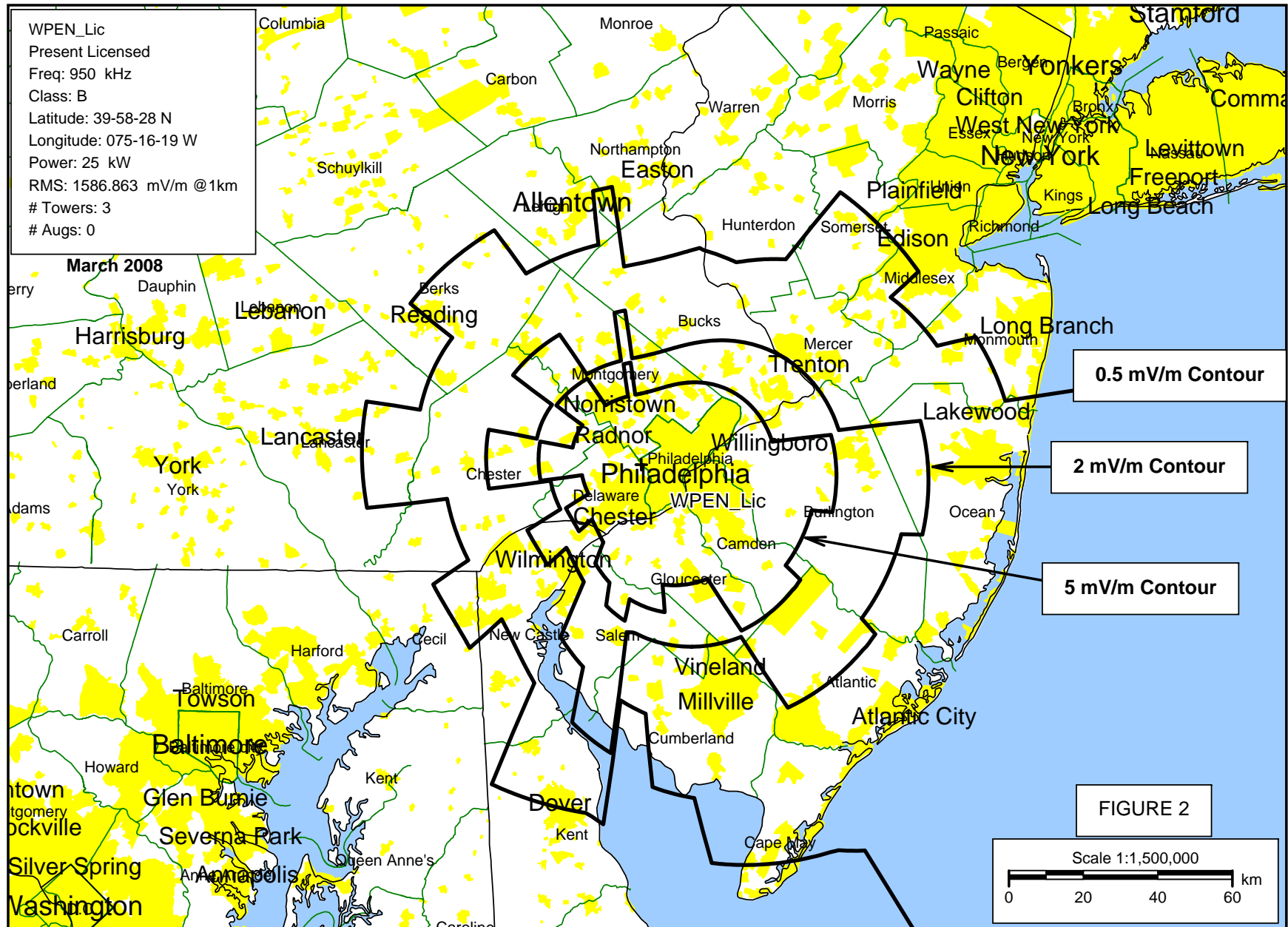


EXHIBIT 12 - AMENDED
COMMUNITY COVERAGE
WPEN, PHILADELPHIA, PENNSYLVANIA
950 kHz 43 kW D/21 kW N DA-2
MARCH 2008

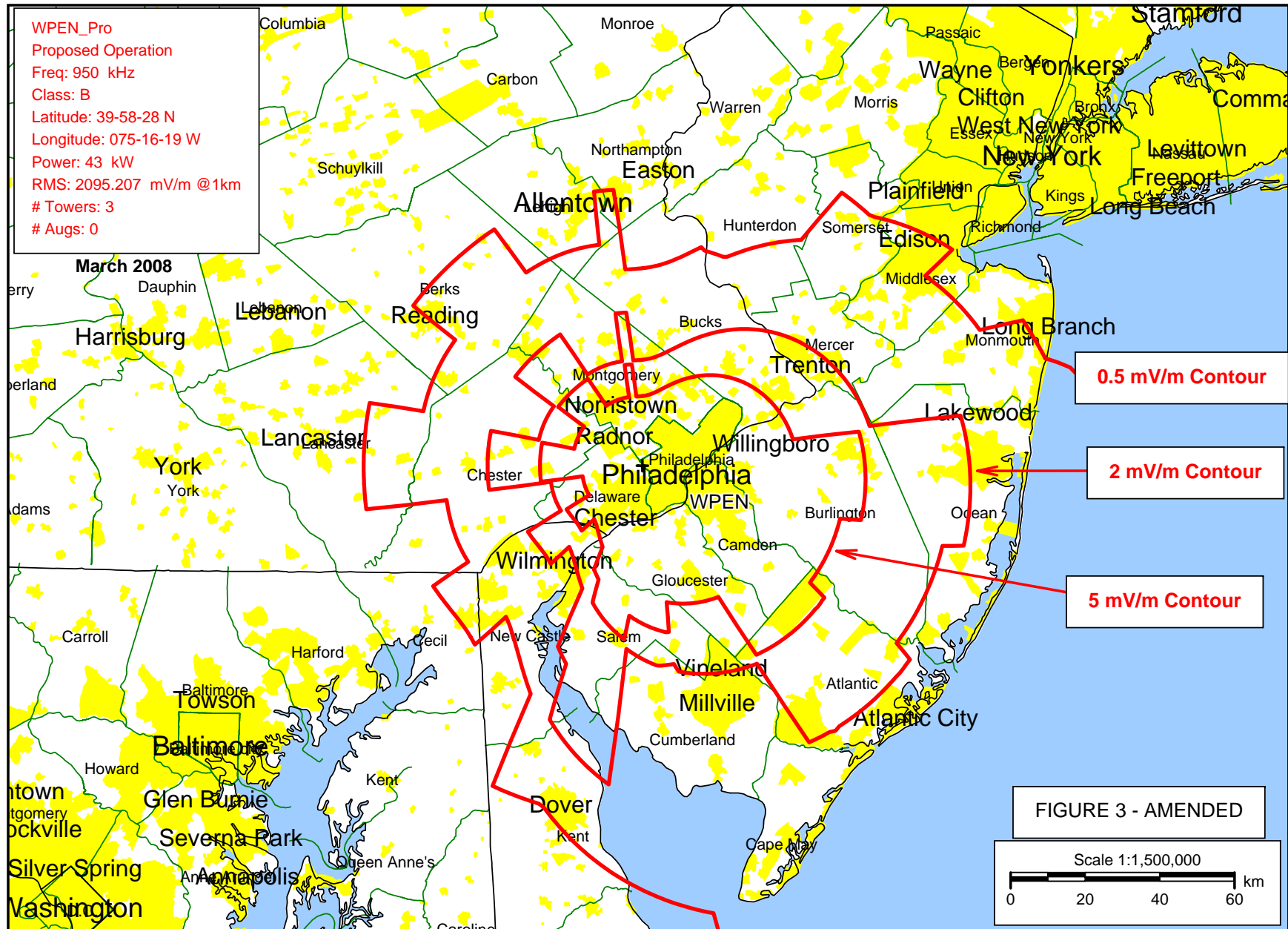
Section 73.24(i)

The attached maps (Figures 2, 3 and 4) show the computed present and proposed daytime 5.0 mV/m contour of WPEN would serve all of station's principal community, Philadelphia, Pennsylvania.

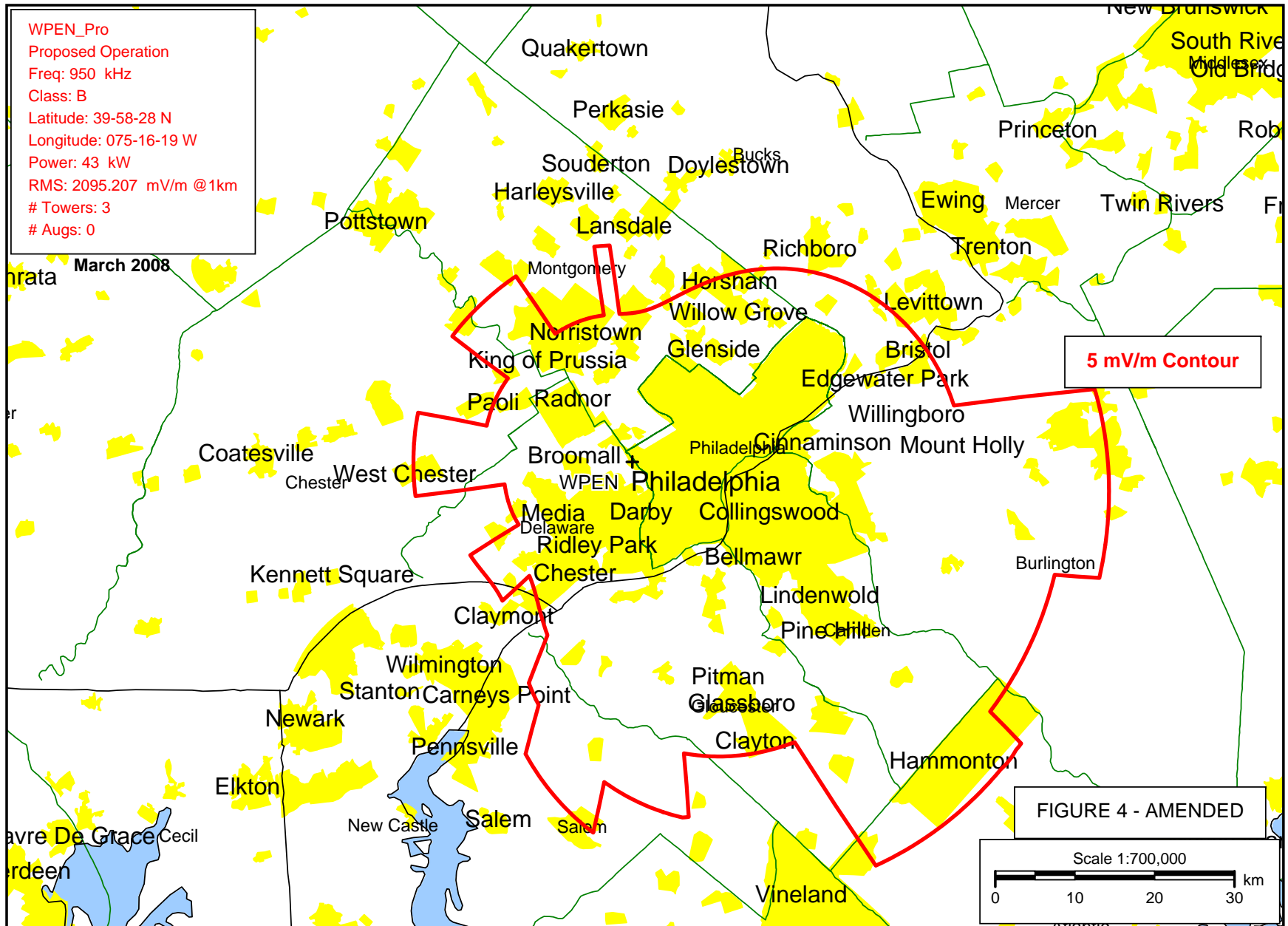
The computed 0.5 mV/m and 2 mV/m contours for the present licensed 25 kW operation and proposed 43 kW operation of WPEN are also shown on the attached maps.



COMPUTED COVERAGE CONTOURS FOR THE PRESENT LICENSED 25 kW DAYTIME OPERATION OF WPEN, PHILADELPHIA, PA



COMPUTED COVERAGE CONTOURS FOR THE PROPOSED 43 kW DAYTIME OPERATION OF WPEN, PHILADELPHIA, PA



COMPUTED 5 mV/m CONTOUR FOR THE PROPOSED 43 kW DAYTIME OPERATION OF WPEN, PHILADELPHIA, PA