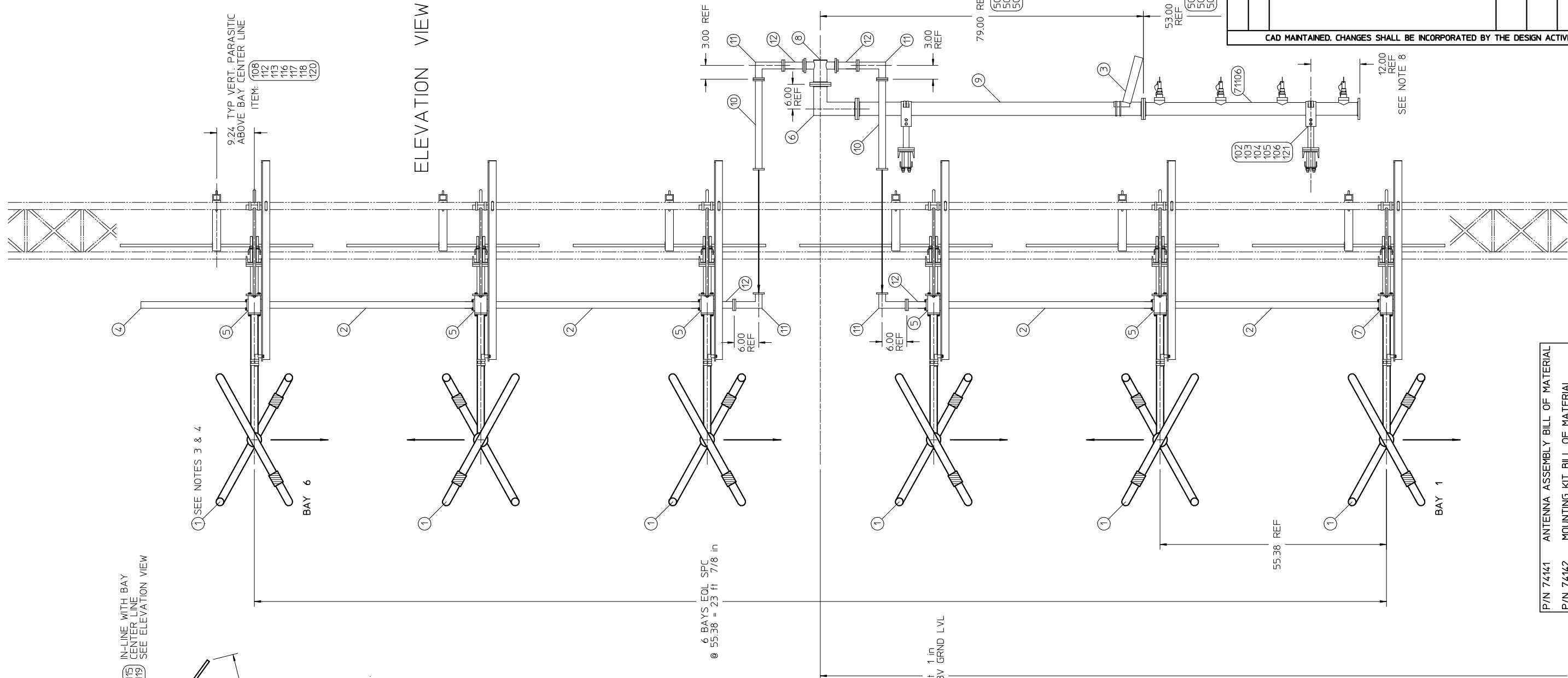
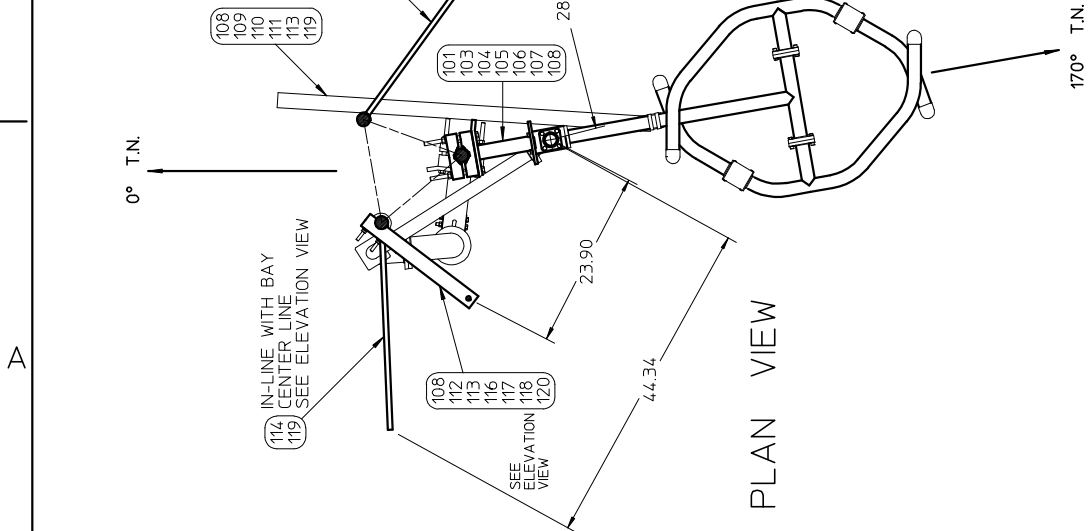


COMPANY CONFIDENTIAL. INFORMATION CONTAINED HEREIN IS CONFIDENTIAL. IT IS THE PROPERTY OF SPX CORPORATION. IT IS TO BE USED SOLELY FOR THE PURPOSE PROVIDED, AND IT IS NOT TO BE DISCLOSED TO OTHERS WITHOUT THE PRIOR WRITTEN CONSENT OF SPX CORPORATION.




REVISIONS				
REV	VER	DESCRIPTION	CHG BY	DATE
CAD MAINTAINED. CHANGES SHALL BE INCORPORATED BY THE DESIGN ACTIVITY.				

P/N 74141	ANTENNA ASSEMBLY BILL OF MATERIAL
P/N 74142	MOUNTING KIT BILL OF MATERIAL
M/SO NO.	67627



- NOTES:
- 1- TO ACHIEVE ANY GIVEN PATTERN STUDY PERFORMED BY DIELECTRIC, THE PROVIDED ANTENNA MUST BE INSTALLED AND ORIENTED AS DEPICTED IN THIS DRAWING. IF ANY SUCH PATTERN WAS NOT PROVIDED, THE ANTENNA ORIENTATION AND POSITION IS AT THE DISCRETION OF THE BUYER TO WHICH THE ANTENNA WAS SOLD. IF ANY QUESTIONS ARISE DURING THE INSTALLATION PROCESS, CONTACT DIELECTRIC COMMUNICATIONS AT 800-341-9678, TO ASSIST IN THIS PROCESS. BE PREPARED TO PROVIDE THE PART NUMBER SHOWN BELOW.
 - 2- APPLY THIN LAYER OF DC4 DOW CORNING COMPOUND TO ALL "O"-RING SEALS PRIOR TO ASSEMBLY.
 - 3- THE TOP BAY MUST NOT BE LOCATED ANY CLOSER THAN 5 ft. BELOW THE TOWER TOP.
 - 4- ORANGE INSULATOR POSITION IS INDICATED WITH ARROW LOCATED ON THE BAY SHOWN IN THE ELEVATION VIEW.
 - 5- IT IS IMPORTANT TO MAINTAIN DOCUMENT FOR HISTORICAL PURPOSES. THE MOST CRITICAL PORTION OF INFORMATION TO BE MAINTAINED IS THE PART NUMBER AS SPECIFIED.
 - 6- COMPONENTS ARE MATCH MARKED FOR EASE IN ASSEMBLY.
 - 7- FOR HEATED ANTENNAS ONLY: HEATER HARNESS TO BE DRESSED & SECURED TO TOWER PER INSTALLERS DISCRETION. LOOSE OR DANGLING WIRE IN RF FIELD WILL SHORT & RESULT IN ANTENNA FAILURE.
 - 8- SUGGESTED LOCATION FOR TERMINATION MOUNT. LOCATION MAY VARY PER TOWER DESIGN.
 - 9- ITEM NUMBERS DEPICTED ON THIS DRAWING CORRESPOND TO ITEM NUMBERS LISTED ON ENCLOSED BILL OF MATERIAL.
 - 10- REFER TO DRAWING A88212 FOR ALL HARDWARE TORQUE SPECIFICATIONS.
 - 11- IF THE ANTENNA IS PROVIDED WITH AN OPTIONAL FINE MATCHING VARIABLE TRANSFORMER, ATTACH IT TO THE BOTTOM END OF THE 70" INPUT SECTION. REPOSITIONING THE MOUNTING BRACKET, AS SUPPLIED, BETWEEN THE BOTTOM & SECOND PROBE WILL ADEQUATELY SUPPORT THIS ASSEMBLY.
 - 12- AFTER ANTENNA HAS BEEN INSTALLED & TUNED ON THE TOWER IT IS REQUESTED THAT A COPY OF THE TEST DATA BE FORWARDED TO:
DIELECTRIC COMMUNICATIONS
C/O FM ENGINEERING MANAGER
22 TOWER RD.
RAYMOND, ME. 04071

PART NO: 74141	STATE: RELEASED		<div> A Unit of SPX Corporation</div>						
	2001/05/23								
MATERIAL:	DIMENSIONAL TOLERANCES (UNLESS OTHERWISE NOTED) 3 PLACE DIMENSIONS ± .005 2 PLACE DIMENSIONS ± .02 ANGULAR DIMENSIONS ± 0°-30° REF DIMENSIONS ARE NOT FOR MANUFACTURING OR INSPECTION		TITLE: INSTALLATION WFBY 106.5 FM SKM6C5D						
FINISH:	NAME		DATE		CODE IDENT NO 08441	DRAWING NO: D911175	REV: -	VER: 1	
	DRAWN BY mtff		2001/05/22						
	CHKD. BY jude		2001/05/23						
	ENG. 1 APPR								
	ENG. 2 APPR								
	MANUFACT		artc 2001/05/23						
QUALITY									
								SHEET. 1 OF 1	