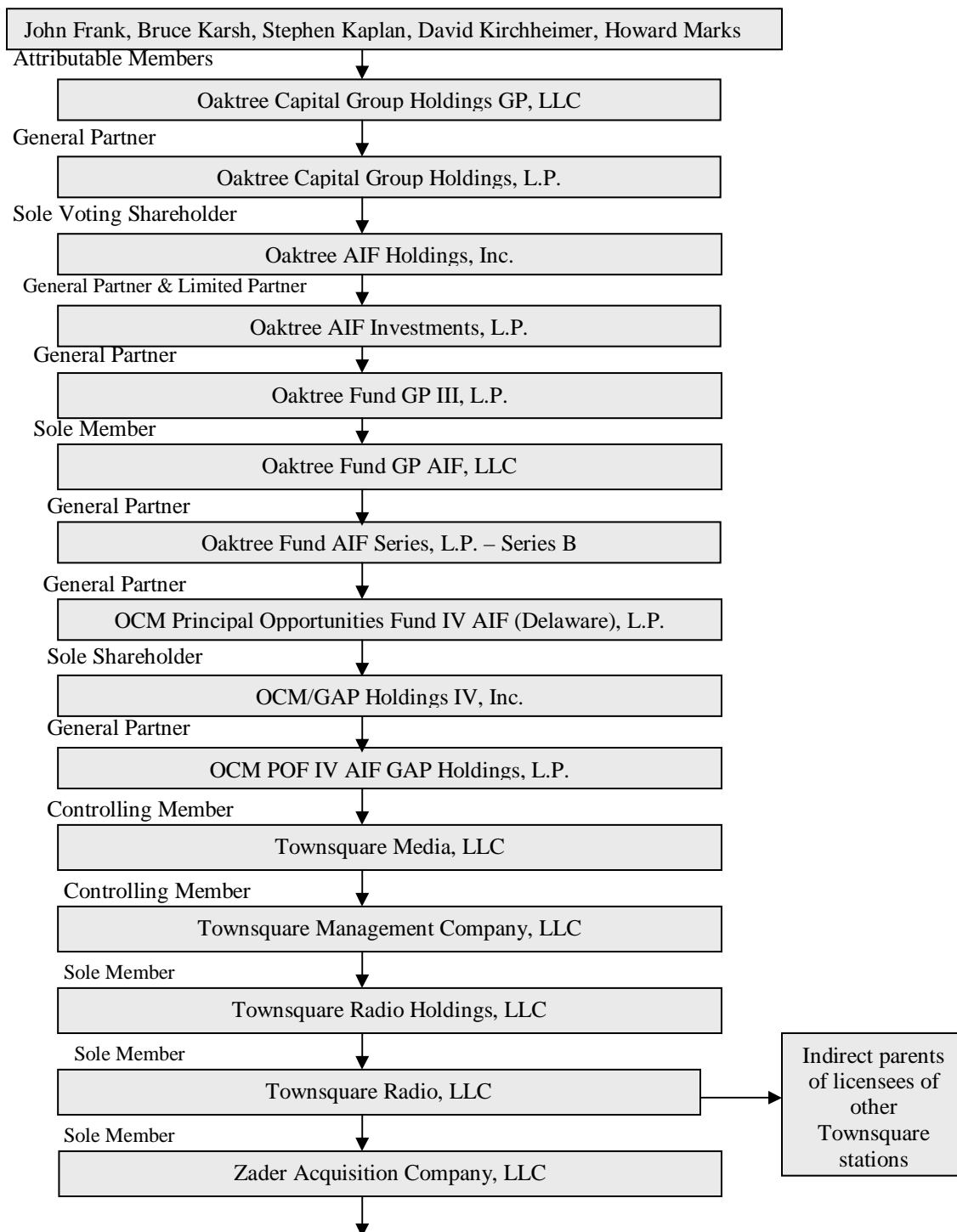
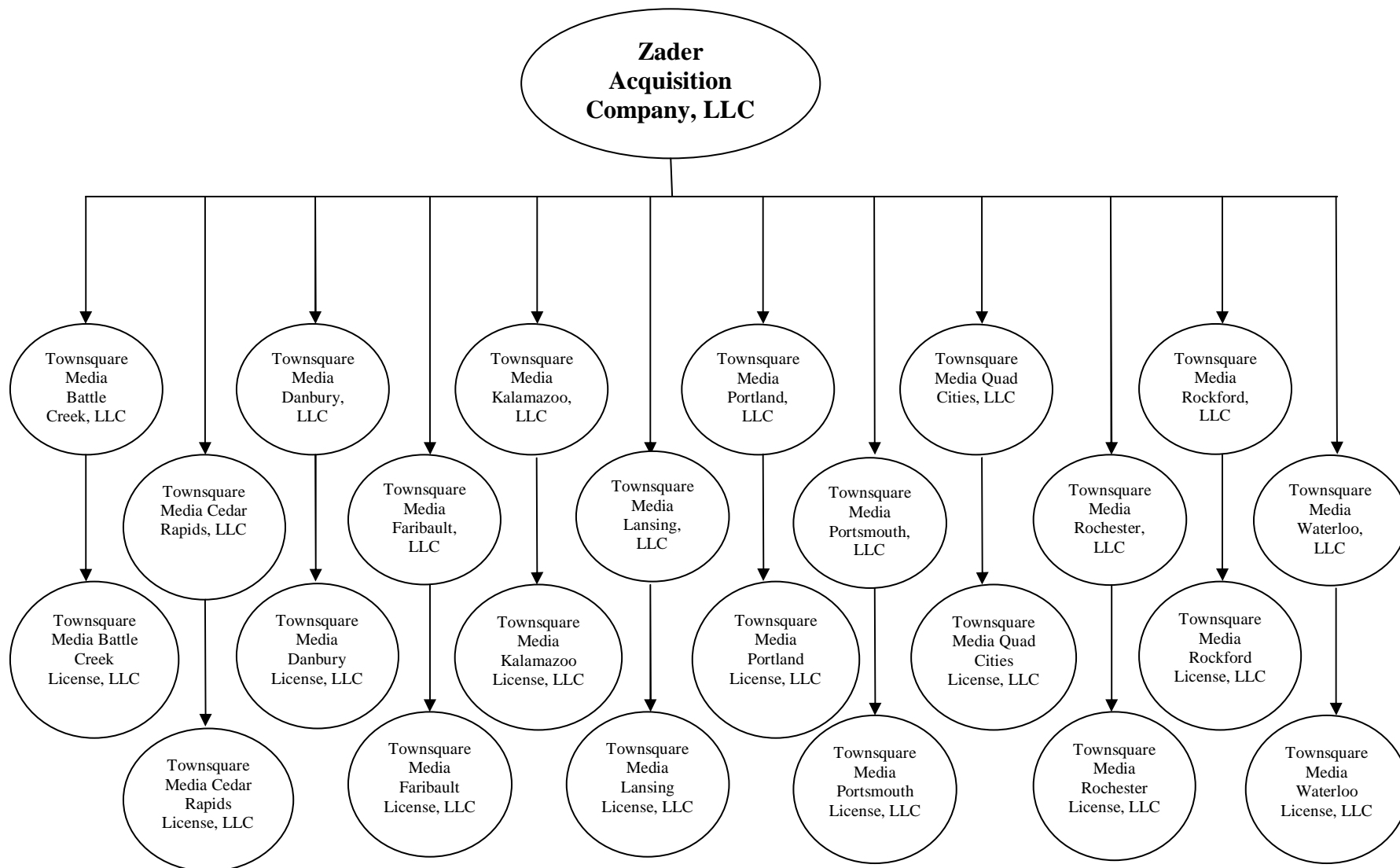


Proposed Assignee's Control Structure



See Next Page for Licensee Information



Entity-Specific Ownership Information

Zader Acquisition Company, LLC

Name and Address	Citizenship	Positional Interest	Percentage Vote	Percentage of Total Assets (debt plus equity)
Zader Acquisition Company, LLC 240 Greenwich Ave. Greenwich, CT 06830	Delaware Limited Liability Company	--	--	--
Townsquare Radio, LLC 240 Greenwich Ave. Greenwich, CT 06830	Delaware Limited Partnership	Sole Member	100%	100%
Steven Price 240 Greenwich Ave. Greenwich, CT 06830	US	Chairman, President, CEO and Manager	0%	0%
Stuart Rosenstein 240 Greenwich Ave. Greenwich, CT 06830	US	Executive Vice President, CFO and Secretary	0%	0%
Alex Berkett 240 Greenwich Ave. Greenwich, CT 06830	US	Executive Vice President – Business Development and M&A and Assistant Secretary	0%	0%
Dhruv Prasad 240 Greenwich Ave. Greenwich, CT 06830	US	Executive Vice President, Live Events	0%	0%
Erik Hellum 240 Greenwich Ave. Greenwich, CT 06830	US	Executive Vice President, Radio	0%	0%
Scott Schatz 240 Greenwich Ave. Greenwich, CT 06830	US	Senior Vice President – Finance, Accounting and Systems	0%	0%
Stephen Kaplan c/o Oaktree Capital Management, L.P. 333 South Grand Avenue, 28 th Floor Los Angeles, CA 90071	US	Manager	0%	0%
B. James Ford c/o Oaktree Capital Management, L.P. 333 South Grand Avenue, 28 th Floor Los Angeles, CA 90071	US	Manager	0%	0%

FCC Form 314
Exhibit 14

Name and Address	Citizenship	Positional Interest	Percentage Vote	Percentage of Total Assets (debt plus equity)
Andrew Salter c/o Oaktree Capital Management, L.P. 333 South Grand Avenue, 28 th Floor Los Angeles, CA 90071	US	Manager	0%	0%
David Quick c/o Oaktree Capital Management, L.P. 333 South Grand Avenue, 28 th Floor Los Angeles, CA 90071	US	Manager	0%	0%
David Lebow 7 Round Pond Road Westport, CT 06880	US	Manager	0%	0%
Gary Ginsberg 193 W. 10 th Street New York, NY 10014	US	Manager	0%	0%

*The individuals listed above also will become the officers/managers of each new licensee entity and its immediate parent. Each licensee entity is 100% owned/controlled by its immediate parent, and each immediate parent is 100% owned/controlled by Zader Acquisition Company, LLC.

Townsquare Radio, LLC

Name and Address	Citizenship	Positional Interest	Percentage Vote	Percentage of Total Assets (debt plus equity)
Townsquare Radio, LLC 240 Greenwich Ave. Greenwich, CT 06830	Delaware Limited Liability Company	--	--	--
Townsquare Radio Holdings, LLC 240 Greenwich Ave. Greenwich, CT 06830	Delaware Limited Liability Company	Sole Member	100%	39.38%
Steven Price 240 Greenwich Ave. Greenwich, CT 06830	US	Chairman, President, CEO and Manager	0%	0%
Stuart Rosenstein 240 Greenwich Ave. Greenwich, CT 06830	US	Executive Vice President, CFO and Secretary	0%	0%
Alex Berkett 240 Greenwich Ave. Greenwich, CT 06830	US	Executive Vice President – Business Development and M&A and Assistant Secretary	0%	0%
Dhruv Prasad 240 Greenwich Ave. Greenwich, CT 06830	US	Executive Vice President, Live Events	0%	0%
Erik Hellum 240 Greenwich Ave. Greenwich, CT 06830	US	Executive Vice President, Radio	0%	0%
Scott Schatz 240 Greenwich Ave. Greenwich, CT 06830	US	Senior Vice President – Finance, Accounting and Systems	0%	0%
Stephen Kaplan c/o Oaktree Capital Management, L.P. 333 South Grand Avenue, 28 th Floor Los Angeles, CA 90071	US	Manager	0%	0%
B. James Ford c/o Oaktree Capital Management, L.P. 333 South Grand Avenue, 28 th Floor Los Angeles, CA 90071	US	Manager	0%	0%
Andrew Salter c/o Oaktree Capital Management, L.P. 333 South Grand Avenue, 28 th Floor Los Angeles, CA 90071	US	Manager	0%	0%

**FCC Form 314
Exhibit 14**

Name and Address	Citizenship	Positional Interest	Percentage Vote	Percentage of Total Assets (debt plus equity)
David Quick c/o Oaktree Capital Management, L.P. 333 South Grand Avenue, 28 th Floor Los Angeles, CA 90071	US	Manager	0%	0%
David Lebow 7 Round Pond Road Westport, CT 06880	US	Manager	0%	0%
Gary Ginsberg 193 W. 10 th Street New York, NY 10014	US	Manager	0%	0%

Townsquare Radio Holdings, LLC

Name and Address	Citizenship	Positional Interest	Percentage Vote	Percentage of Total Assets (debt plus equity)
Townsquare Radio Holdings, LLC 240 Greenwich Ave. Greenwich, CT 06830	Delaware Limited Liability Company	--	--	--
Townsquare Management Company, LLC 240 Greenwich Ave. Greenwich, CT 06830	Delaware Limited Liability Company	Sole Member	100%	100%
Steven Price 240 Greenwich Ave. Greenwich, CT 06830	US	Chairman, President, CEO and Manager	0%	0%
Stuart Rosenstein 240 Greenwich Ave. Greenwich, CT 06830	US	Executive Vice President, CFO and Secretary	0%	0%
Alex Berkett 240 Greenwich Ave. Greenwich, CT 06830	US	Executive Vice President, Business Development and M&A and Assistant Secretary	0%	0%
Dhruv Prasad 240 Greenwich Ave. Greenwich, CT 06830	US	Executive Vice President, Live Events	0%	0%
Erik Hellum 240 Greenwich Ave. Greenwich, CT 06830	US	Executive Vice President, Radio	0%	0%
Scott Schatz 240 Greenwich Ave. Greenwich, CT 06830	US	Senior Vice President, Finance, Accounting and Systems	0%	0%
Stephen Kaplan c/o Oaktree Capital Management, L.P. 333 South Grand Avenue, 28 th Floor Los Angeles, CA 90071	US	Manager	0%	0%
B. James Ford c/o Oaktree Capital Management, L.P. 333 South Grand Avenue, 28 th Floor Los Angeles, CA 90071	US	Manager	0%	0%
Andrew Salter c/o Oaktree Capital Management, L.P. 333 South Grand Avenue, 28 th Floor Los Angeles, CA 90071	US	Manager	0%	0%

**FCC Form 314
Exhibit 14**

Name and Address	Citizenship	Positional Interest	Percentage Vote	Percentage of Total Assets (debt plus equity)
David Quick c/o Oaktree Capital Management, L.P. 333 South Grand Avenue, 28 th Floor Los Angeles, CA 90071	US	Manager	0%	0%
David Lebow 7 Round Pond Road Westport, CT 06880	US	Manager	0%	0%
Gary Ginsberg 193 W. 10 th Street New York, NY 10014	US	Manager	0%	0%

Townsquare Management Company, LLC

Name and Address	Citizenship	Positional Interest	Percentage Vote	Percentage of Total Assets (debt plus equity)
Townsquare Management Company, LLC 240 Greenwich Ave. Greenwich, CT 06830	Delaware Limited Liability Company	--	--	--
Townsquare Media, LLC 240 Greenwich Ave. Greenwich, CT 06830	Delaware Limited Liability Company	Controlling Member	99.99%	99.99%
OCM POF IV AIF GAP Holdings, L.P. c/o Oaktree Capital Management, L.P. 333 South Grand Avenue, 28 th Floor Los Angeles, CA 90071	Delaware Limited Partnership	Member	0.01%	0.01%
Steven Price 240 Greenwich Ave. Greenwich, CT 06830	US	Chairman, President, CEO and Manager	0%	0%
Stuart Rosenstein 240 Greenwich Ave. Greenwich, CT 06830	US	Executive Vice President, CFO and Secretary	0%	0%
Alex Berkett 240 Greenwich Ave. Greenwich, CT 06830	US	Executive Vice President, Business Development and M&A and Assistant Secretary	0%	0%
Dhruv Prasad 240 Greenwich Ave. Greenwich, CT 06830	US	Executive Vice President, Live Events	0%	0%
Erik Hellum 240 Greenwich Ave. Greenwich, CT 06830	US	Executive Vice President, Radio	0%	0%
Scott Schatz 240 Greenwich Ave. Greenwich, CT 06830	US	Senior Vice President, Finance, Accounting and Systems	0%	0%
Stephen Kaplan c/o Oaktree Capital Management, L.P. 333 South Grand Avenue, 28 th Floor Los Angeles, CA 90071	US	Manager	0%	0%
B. James Ford c/o Oaktree Capital Management, L.P. 333 South Grand Avenue, 28 th Floor Los Angeles, CA 90071	US	Manager	0%	0%

FCC Form 314
Exhibit 14

Name and Address	Citizenship	Positional Interest	Percentage Vote	Percentage of Total Assets (debt plus equity)
Andrew Salter c/o Oaktree Capital Management, L.P. 333 South Grand Avenue, 28 th Floor Los Angeles, CA 90071	US	Manager	0%	0%
David Quick c/o Oaktree Capital Management, L.P. 333 South Grand Avenue, 28 th Floor Los Angeles, CA 90071	US	Manager	0%	0%
David Lebow 7 Round Pond Road Westport, CT 06880	US	Manager	0%	0%
Gary Ginsberg 193 W. 10 th Street New York, NY 10014	US	Manager	0%	0%

Townsquare Media, LLC

Name and Address	Citizenship	Positional Interest	Percentage Vote	Percentage of Total Assets (debt plus equity)¹
Townsquare Media, LLC 240 Greenwich Ave. Greenwich, CT 06830	Delaware Limited Liability Company	--	--	--
OCM POF IV AIF GAP Holdings, L.P. c/o Oaktree Capital Management, L.P. 333 South Grand Avenue, 28th Floor Los Angeles, CA 90071	Delaware Limited Partnership	Controlling Member	80.17% ²	43.95%
OCM PF/FF Radio Holdings PT, L.P. ³ c/o Oaktree Capital Management, L.P. 333 South Grand Avenue, 28th Floor Los Angeles, CA 90071	Delaware Limited Partnership	Member	19.83%	10.87%
FiveWire Media Ventures LLC ⁴ 240 Greenwich Ave. Greenwich, CT 06830	Delaware Limited Liability Company	Non-Voting Member	0%	4.78%
Bill Wilson 240 Greenwich Ave. Greenwich, CT 06830	US	Non-Voting Member	0%	<1%
Claire Messner 240 Greenwich Ave. Greenwich, CT 06830	US	Non-Voting Member	0%	<1%
Sun Sachs 240 Greenwich Ave. Greenwich, CT 06820	US	Non-Voting Member	0%	<1%

¹ The limited liability company agreement of Townsquare Media, LLC includes the Commission's insulating language for certain unitholders. Such insulated unitholders of Townsquare Media, LLC are not listed here.

² OCM POF IV AIF GAP Holdings, L.P. ("POF") and OCM PF/FF Radio Holdings PT, L.P. ("PF/FF" and, collectively with POF, the "OCM Funds") hold all of the voting equity of Townsquare Media, LLC ("Townsquare"). Most decisions for Townsquare are made by its board of managers. Four of the seven board members are representatives the OCM Funds. Two of the board members are independent managers who are selected by the OCM Funds, from a pool of qualified candidates identified by a search firm, based on independence and disinterestedness with respect to the OCM Funds and Townsquare and based on experience, qualifications and integrity. The final board member is the then-sitting CEO of Townsquare, who is appointed by the board (which is controlled by the OCM Funds since they have four board representatives). Ownership information for POF, as well as the remainder of the entities in the Townsquare ownership chain begins on page 16.

³ Ownership information for OCM PF/FF Radio Holdings PT, L.P. is listed on page 14.

⁴ Ownership information for FiveWire Media Ventures LLC is listed on page 13.

FCC Form 314
Exhibit 14

Name and Address	Citizenship	Positional Interest	Percentage Vote	Percentage of Total Assets (debt plus equity)¹
Jared Willig 240 Greenwich Ave. Greenwich, CT 06830	US	Non-Voting Member	0%	<1%
Steven Price 240 Greenwich Ave. Greenwich, CT 06830	US	Chairman, President, CEO and Manager	0%	0%
Stuart Rosenstein 240 Greenwich Ave. Greenwich, CT 06830	US	Executive Vice President, CFO and Secretary	0%	0%
Alex Berkett 240 Greenwich Ave. Greenwich, CT 06830	US	Executive Vice President, Business Development and M&A and Assistant Secretary	0%	0%
Dhruv Prasad 240 Greenwich Ave. Greenwich, CT 06830	US	Executive Vice President, Live Events	0%	0%
Erik Hellum 240 Greenwich Ave. Greenwich, CT 06830	US	Executive Vice President, Radio	0%	<1%
Scott Schatz 240 Greenwich Ave. Greenwich, CT 06830	US	Senior Vice President, Finance, Accounting and Systems	0%	<1%
Stephen Kaplan c/o Oaktree Capital Management, L.P. 333 South Grand Avenue, 28 th Floor Los Angeles, CA 90071	US	Manager	0%	0%
B. James Ford c/o Oaktree Capital Management, L.P. 333 South Grand Avenue, 28 th Floor Los Angeles, CA 90071	US	Manager	0%	0%
Andrew Salter c/o Oaktree Capital Management, L.P. 333 South Grand Avenue, 28 th Floor Los Angeles, CA 90071	US	Manager	0%	0%
David Quick c/o Oaktree Capital Management, L.P. 333 South Grand Avenue, 28 th Floor Los Angeles, CA 90071	US	Manager	0%	0%
David Lebow 7 Round Pond Road Westport, CT 06880	US	Manager	0%	0%
Gary Ginsberg 193 W. 10 th Street New York, NY 10014	US	Manager	0%	0%

FiveWire Media Ventures LLC

Name and Address	Citizenship	Positional Interest	Percentage Vote	Percentage of Total Assets (debt plus equity)⁵
FiveWire Media Ventures LLC 240 Greenwich Ave. Greenwich, CT 06830	Delaware Limited Liability Company	---	---	---
Steven Price 240 Greenwich Ave. Greenwich, CT 06830	U.S.	President, Member and Manager	100%	6%
Stuart Rosenstein 240 Greenwich Ave. Greenwich, CT 06830	U.S.	Secretary, Treasurer and Member	0%	10%
Alex Berkett 240 Greenwich Ave. Greenwich, CT 06830	U.S.	Member	0%	0.3%
Dhruv Prasad 240 Greenwich Ave. Greenwich, CT 06830	U.S.	Member	0%	0.3%
Scott Schatz 240 Greenwich Ave. Greenwich, CT 06830	U.S.	Member	0%	0.24%

⁵ The limited liability company agreement of FiveWire Media Ventures, LLC includes the Commission's insulating language for certain members. Such insulated members of FiveWire Media Ventures, LLC are not listed here.

OCM PF/FF Radio Holdings PT, L.P.*

Name and Address	Citizenship	Positional Interest	Percentage Vote	Percentage of Total Assets (debt plus equity)
OCM PF/FF Radio Holdings PT, L.P. c/o Oaktree Capital Management, L.P. 333 South Grand Avenue, 28th Floor Los Angeles, CA 90071	Delaware Limited Partnership	--	--	--
Oaktree Fund AIF Series, L.P. - Series I c/o Oaktree Capital Management, L.P. 333 South Grand Avenue, 28th Floor Los Angeles, CA 90071	Delaware Limited Partnership	General Partner	50%	0.12%
Oaktree Fund AIF Series, L.P. - Series D c/o Oaktree Capital Management, L.P. 333 South Grand Avenue, 28th Floor Los Angeles, CA 90071	Delaware Limited Partnership	General Partner	50%	0.45%

*The OCM PF/FF Radio Holdings PT, L.P. partnership agreement includes the Commission's insulating language for limited partners. OCM PF/FF Radio Holdings PT, L.P.'s remaining equity is held by such limited partners.

Oaktree Fund AIF Series, L.P. – Series D

Name and Address	Citizenship	Positional Interest	Percentage Vote	Percentage of Total Assets (debt plus equity)
Oaktree Fund AIF Series, L.P. – Series D c/o Oaktree Capital Management, L.P. 333 South Grand Avenue, 28th Floor Los Angeles, CA 90071	Delaware Limited Partnership	---	---	---
Oaktree Fund GP AIF, LLC c/o Oaktree Capital Management, L.P. 333 South Grand Avenue, 28 th Floor Los Angeles, CA 90071	Delaware Limited Liability Company	General Partner	100%	0%
Oaktree Fund GP III, L.P. c/o Oaktree Capital Management, L.P. 333 South Grand Avenue, 28 th Floor Los Angeles, CA 90071	Delaware Limited Partnership	Limited Partner	0%	100%

Oaktree Fund AIF Series, L.P. – Series I

Name and Address	Citizenship	Positional Interest	Percentage Vote	Percentage of Total Assets (debt plus equity)
Oaktree Fund AIF Series, L.P. – Series I c/o Oaktree Capital Management, L.P. 333 South Grand Avenue, 28th Floor Los Angeles, CA 90071	Delaware Limited Partnership	---	---	---
Oaktree Fund GP AIF, LLC c/o Oaktree Capital Management, L.P. 333 South Grand Avenue, 28 th Floor Los Angeles, CA 90071	Delaware Limited Liability Company	General Partner	100%	0%
Oaktree Fund GP III, L.P. c/o Oaktree Capital Management, L.P. 333 South Grand Avenue, 28 th Floor Los Angeles, CA 90071	Delaware Limited Partnership	Limited Partner	0%	100%

OCM POF IV AIF GAP Holdings, L.P.

Name and Address	Citizenship	Positional Interest	Percentage Vote	Percentage of Total Assets (debt plus equity)
OCM POF IV AIF GAP Holdings, L.P. c/o Oaktree Capital Management, L.P. 333 South Grand Avenue, 28th Floor Los Angeles, CA 90071	Delaware Limited Partnership	--	--	--
OCM/GAP Holdings IV, Inc. c/o Oaktree Capital Management, L.P. 333 South Grand Avenue, 28 th Floor Los Angeles, CA 90071	Delaware Corporation	General Partner	100%	41.8320% ⁶
OCM Principal Opportunities Fund IV AIF (Delaware), L.P. c/o Oaktree Capital Management, L.P. 333 South Grand Avenue, 28 th Floor Los Angeles, CA 90071	Delaware Limited Partnership	Limited Partner	0%	58.1680%

⁶ The allocation of distributions by OCM POF IV AIF GAP Holdings, L.P. between its partners is not fixed. Instead, such allocation varies depending on (i) the composition of investors at OCM Principal Opportunities Fund IV AIF (Delaware), L.P. ("Fund IV") and (ii) the amount of profit from Fund IV's investments allocated to Fund IV.

OCM/GAP Holdings IV, Inc.

Name and Address	Citizenship	Positional Interest	Percentage Vote	Percentage of Total Assets (debt plus equity)
OCM/GAP Holdings IV, Inc. c/o Oaktree Capital Management, L.P. 333 South Grand Avenue, 28th Floor Los Angeles, CA 90071	Delaware Corporation	--	--	--
OCM Principal Opportunities Fund IV AIF (Delaware), L.P. c/o Oaktree Capital Management, L.P. 333 South Grand Avenue, 28 th Floor Los Angeles, CA 90071	Delaware Limited Partnership	Sole Shareholder	100%	100%
Andrew Salter c/o Oaktree Capital Management, L.P. 333 South Grand Avenue, 28 th Floor Los Angeles, CA 90071	US	President, Secretary and Director	0%	0%
B. James Ford c/o Oaktree Capital Management, L.P. 333 South Grand Avenue, 28 th Floor Los Angeles, CA 90071	US	Director	0%	0%
David Quick c/o Oaktree Capital Management, L.P. 333 South Grand Avenue, 28 th Floor Los Angeles, CA 90071	US	Director	0%	0%

OCM Principal Opportunities Fund IV AIF (Delaware), L.P.

Name and Address	Citizenship	Positional Interest	Percentage Vote	Percentage of Total Assets (debt plus equity)⁷
OCM Principal Opportunities Fund IV AIF (Delaware), L.P. c/o Oaktree Capital Management, L.P. 333 South Grand Avenue, 28th Floor Los Angeles, CA 90071	Delaware Limited Partnership	---	---	---
Oaktree Fund AIF Series, L.P. – Series B c/o Oaktree Capital Management, L.P. 333 South Grand Avenue, 28 th Floor Los Angeles, CA 90071	Delaware Limited Partnership	General Partner	100%	2%

⁷ The partnership agreement of OCM Principal Opportunities Fund IV AIF (Delaware), L.P. includes the Commission's insulating language for limited partners. Such limited partners of OCM Principal Opportunities Fund IV AIF (Delaware), L.P. are not listed here.

Oaktree Fund AIF Series, L.P. – Series B

Name and Address	Citizenship	Positional Interest	Percentage Vote	Percentage of Total Assets (debt plus equity)
Oaktree Fund AIF Series, L.P. – Series B c/o Oaktree Capital Management, L.P. 333 South Grand Avenue, 28th Floor Los Angeles, CA 90071	Delaware Limited Partnership	---	---	---
Oaktree Fund GP AIF, LLC c/o Oaktree Capital Management, L.P. 333 South Grand Avenue, 28 th Floor Los Angeles, CA 90071	Delaware Limited Liability Company	General Partner	100%	0%
Oaktree Fund GP III, L.P. c/o Oaktree Capital Management, L.P. 333 South Grand Avenue, 28 th Floor Los Angeles, CA 90071	Delaware Limited Partnership	Limited Partner	0%	100%

Oaktree Fund GP AIF, LLC

Name and Address	Citizenship	Positional Interest	Percentage Vote	Percentage of Total Assets (debt plus equity)
Oaktree Fund GP AIF, LLC c/o Oaktree Capital Management, L.P. 333 South Grand Avenue, 28th Floor Los Angeles, CA 90071	Delaware Limited Liability Company	---	---	---
Oaktree Fund GP III, L.P. c/o Oaktree Capital Management, L.P. 333 South Grand Avenue, 28 th Floor Los Angeles, CA 90071	Delaware Limited Partnership	Sole Member	100%	100%
Todd Molz c/o Oaktree Capital Management, L.P. 333 South Grand Avenue, 28 th Floor Los Angeles, CA 90071	U.S.	Secretary	0%	0%

Oaktree Fund GP III, L.P.

Name and Address	Citizenship	Positional Interest	Percentage Vote	Percentage of Total Assets (debt plus equity)
Oaktree Fund GP III, L.P. c/o Oaktree Capital Management, L.P. 333 South Grand Avenue, 28th Floor Los Angeles, CA 90071	Delaware Limited Partnership	---	---	---
Oaktree AIF Investments, L.P. c/o Oaktree Capital Management, L.P. 333 South Grand Avenue, 28 th Floor Los Angeles, CA 90071	Delaware Limited Partnership	General Partner	100%	50-65%*

*Oaktree AIF Investments, L.P. has an ownership interest in Oaktree Fund GP III, L.P. as a general partner, and certain investment professionals who are employees of Oaktree have an ownership interest as limited partners. These investment professionals receive their incentive compensation in the underlying investment funds through Oaktree Fund GP III, L.P., and the percentage of assets and equity attributable to the investment professionals (and, correspondingly, to Oaktree AIF Investments, L.P., the general partner) vary as new funds are added underneath and old funds liquidate. Moreover, different investment professionals have interests that are separated into different series designations, making a single percentage difficult to calculate. Accordingly, the data set forth in the table above is provided as a range.

The partnership agreement of Oaktree Fund GP III, L.P. includes the Commission's insulating language for limited partners. Such limited partners of Oaktree Fund GP III, L.P. are not listed here.

Oaktree AIF Investments, L.P.

Name and Address	Citizenship	Positional Interest	Percentage Vote	Percentage of Total Assets (debt plus equity)
Oaktree AIF Investments, L.P. c/o Oaktree Capital Management, L.P. 333 South Grand Avenue, 28th Floor Los Angeles, CA 90071	Delaware Limited Partnership	---	---	---
Oaktree AIF Holdings, Inc. c/o Oaktree Capital Management, L.P. 333 South Grand Avenue, 28 th Floor Los Angeles, CA 90071	Delaware Corporation	General Partner and Limited Partner	100%	25.3%
Oaktree Capital Group Holdings, L.P. c/o Oaktree Capital Management, L.P. 333 South Grand Avenue, 28 th Floor Los Angeles, CA 90071	Delaware Limited Partnership	Limited Partner	0%	74.7%
Howard Marks c/o Oaktree Capital Management, L.P. 333 South Grand Avenue, 28 th Floor Los Angeles, CA 90071	U.S.	Chairman	0%	0%
Bruce Karsh c/o Oaktree Capital Management, L.P. 333 South Grand Avenue, 28 th Floor Los Angeles, CA 90071	U.S.	President	0%	0%
John Frank c/o Oaktree Capital Management, L.P. 333 South Grand Avenue, 28 th Floor Los Angeles, CA 90071	U.S.	Managing Principal	0%	0%
David Kirchheimer c/o Oaktree Capital Management, L.P. 333 South Grand Avenue, 28 th Floor Los Angeles, CA 90071	U.S.	Chief Financial Officer	0%	0%
Todd Molz c/o Oaktree Capital Management, L.P. 333 South Grand Avenue, 28 th Floor Los Angeles, CA 90071	U.S.	Managing Director, General Counsel and Secretary	0%	0%
Richard Ting c/o Oaktree Capital Management, L.P. 333 South Grand Avenue, 28 th Floor Los Angeles, CA 90071	U.S.	Managing Director, Associate General Counsel and Assistant Secretary	0%	0%
Lisa Arakaki c/o Oaktree Capital Management, L.P. 333 South Grand Avenue, 28 th Floor Los Angeles, CA 90071	U.S.	Managing Director	0%	0%

**FCC Form 314
Exhibit 14**

Name and Address	Citizenship	Positional Interest	Percentage Vote	Percentage of Total Assets (debt plus equity)
Brian Beck c/o Oaktree Capital Management, L.P. 333 South Grand Avenue, 28 th Floor Los Angeles, CA 90071	U.S.	Managing Director	0%	0%
Emily Stephens c/o Oaktree Capital Management, L.P. 333 South Grand Avenue, 28 th Floor Los Angeles, CA 90071	U.S.	Managing Director	0%	0%
John Edwards c/o Oaktree Capital Management, L.P. 333 South Grand Avenue, 28 th Floor Los Angeles, CA 90071	U.S.	Managing Director	0%	0%
Martin Boskovich c/o Oaktree Capital Management, L.P. 333 South Grand Avenue, 28 th Floor Los Angeles, CA 90071	U.S.	Senior Vice President	0%	0%
Jay Ghiya c/o Oaktree Capital Management, L.P. 333 South Grand Avenue, 28 th Floor Los Angeles, CA 90071	U.S.	Senior Vice President	0%	0%
Cary Kleinman c/o Oaktree Capital Management, L.P. 333 South Grand Avenue, 28 th Floor Los Angeles, CA 90071	U.S.	Senior Vice President	0%	0%
Jeffrey Joseph c/o Oaktree Capital Management, L.P. 333 South Grand Avenue, 28 th Floor Los Angeles, CA 90071	U.S.	Vice President	0%	0%
Philip McDermott c/o Oaktree Capital Management, L.P. 333 South Grand Avenue, 28 th Floor Los Angeles, CA 90071	U.S.	Assistant Vice President	0%	0%

Oaktree AIF Holdings, Inc.

Name and Address	Citizenship	Positional Interest	Percentage Vote	Percentage of Total Assets (debt plus equity)⁸
Oaktree AIF Holdings, Inc. c/o Oaktree Capital Management, L.P. 333 South Grand Avenue, 28th Floor Los Angeles, CA 90071	Delaware Corporation	---	---	---
Oaktree Capital Group Holdings, L.P. c/o Oaktree Capital Management, L.P. 333 South Grand Avenue, 28 th Floor Los Angeles, CA 90071	Delaware Limited Partnership	Sole Voting Shareholder	100%	0%
Howard Marks c/o Oaktree Capital Management, L.P. 333 South Grand Avenue, 28 th Floor Los Angeles, CA 90071	U.S.	Chairman	0%	0%
Bruce Karsh c/o Oaktree Capital Management, L.P. 333 South Grand Avenue, 28 th Floor Los Angeles, CA 90071	U.S.	President	0%	0%
John Frank c/o Oaktree Capital Management, L.P. 333 South Grand Avenue, 28 th Floor Los Angeles, CA 90071	U.S.	Managing Principal	0%	0%
David Kirchheimer c/o Oaktree Capital Management, L.P. 333 South Grand Avenue, 28 th Floor Los Angeles, CA 90071	U.S.	Chief Financial Officer	0%	0%
Todd Molz c/o Oaktree Capital Management, L.P. 333 South Grand Avenue, 28 th Floor Los Angeles, CA 90071	U.S.	Managing Director, General Counsel, Secretary and Sole Director	0%	0%
John Edwards c/o Oaktree Capital Management, L.P. 333 South Grand Avenue, 28 th Floor Los Angeles, CA 90071	U.S.	Managing Director and Treasurer	0%	0%
Richard Ting c/o Oaktree Capital Management, L.P. 333 South Grand Avenue, 28 th Floor Los Angeles, CA 90071	U.S.	Managing Director, Associate General Counsel and Assistant Secretary	0%	0%

⁸ The equity of Oaktree AIF Holdings, Inc. is held by an entity which is properly insulated in accordance with the Commission's rules and policies.

**FCC Form 314
Exhibit 14**

Name and Address	Citizenship	Positional Interest	Percentage Vote	Percentage of Total Assets (debt plus equity)⁸
Lisa Arakaki c/o Oaktree Capital Management, L.P. 333 South Grand Avenue, 28 th Floor Los Angeles, CA 90071	U.S.	Managing Director	0%	0%
Brian Beck c/o Oaktree Capital Management, L.P. 333 South Grand Avenue, 28 th Floor Los Angeles, CA 90071	U.S.	Managing Director and Assistant Secretary	0%	0%
Emily Stephens c/o Oaktree Capital Management, L.P. 333 South Grand Avenue, 28 th Floor Los Angeles, CA 90071	U.S.	Managing Director	0%	0%
Martin Boskovich c/o Oaktree Capital Management, L.P. 333 South Grand Avenue, 28 th Floor Los Angeles, CA 90071	U.S.	Senior Vice President	0%	0%
Jay Ghiya c/o Oaktree Capital Management, L.P. 333 South Grand Avenue, 28 th Floor Los Angeles, CA 90071	U.S.	Senior Vice President	0%	0%
Cary Kleinman c/o Oaktree Capital Management, L.P. 333 South Grand Avenue, 28 th Floor Los Angeles, CA 90071	U.S.	Senior Vice President	0%	0%
Jeffrey Joseph c/o Oaktree Capital Management, L.P. 333 South Grand Avenue, 28 th Floor Los Angeles, CA 90071	U.S.	Vice President	0%	0%
Philip McDermott c/o Oaktree Capital Management, L.P. 333 South Grand Avenue, 28 th Floor Los Angeles, CA 90071	U.S.	Assistant Vice President	0%	0%

Oaktree Capital Group Holdings, L.P.

Name and Address	Citizenship	Positional Interest	Percentage Vote	Percentage of Total Assets (debt plus equity)⁹
Oaktree Capital Group Holdings, L.P. c/o Oaktree Capital Management, L.P. 333 South Grand Avenue, 28th Floor Los Angeles, CA 90071	Delaware Limited Partnership	---	---	---
Oaktree Capital Group Holdings GP, LLC c/o Oaktree Capital Management, L.P. 333 South Grand Avenue, 28 th Floor Los Angeles, CA 90071	Delaware Limited Liability Company	General Partner	100%	0% ¹⁰
John Frank c/o Oaktree Capital Management, L.P. 333 South Grand Avenue, 28 th Floor Los Angeles, CA 90071	U.S.	Limited Partner	0%	1.7%
Stephen Kaplan c/o Oaktree Capital Management, L.P. 333 South Grand Avenue, 28 th Floor Los Angeles, CA 90071	U.S.	Limited Partner	0%	1.5%
Bruce Karsh c/o Oaktree Capital Management, L.P. 333 South Grand Avenue, 28 th Floor Los Angeles, CA 90071	U.S.	Limited Partner	0%	14.4%
David Kirchheimer c/o Oaktree Capital Management, L.P. 333 South Grand Avenue, 28 th Floor Los Angeles, CA 90071	U.S.	Limited Partner	0%	1.2%
Howard Marks c/o Oaktree Capital Management, L.P. 333 South Grand Avenue, 28 th Floor Los Angeles, CA 90071	U.S.	Limited Partner	0%	14.4%

⁹ The partnership agreement of Oaktree Capital Group Holdings, L.P. includes the Commission's insulating language for limited partners. Limited partners of Oaktree Capital Group Holdings, L.P. who do not hold voting interests in the Media Company Committee of Oaktree Capital Group Holdings, L.P.'s general partner are not listed here.

¹⁰ As shown above, Oaktree Capital Group Holdings GP, LLC controls Oaktree Capital Group Holdings, L.P., but does not hold any equity interest in that entity. The equity of Oaktree Capital Group Holdings, L.P. is held by limited partners, including the five controlling members of Oaktree Capital Group Holdings GP, LLC (who are five of its six founding members). Each of these five controlling members holds equity in the licensee entities through Oaktree Capital Group Holdings, L.P.

Oaktree Capital Group Holdings GP, LLC**

Name and Address	Citizenship	Positional Interest	Percentage Vote	Percentage of Total Assets (debt plus equity)
Oaktree Capital Group Holdings GP, LLC c/o Oaktree Capital Management, L.P. 333 South Grand Avenue, 28th Floor Los Angeles, CA 90071	Delaware Limited Liability Company	---	---	---
Howard Marks c/o Oaktree Capital Management, L.P. 333 South Grand Avenue, 28 th Floor Los Angeles, CA 90071	U.S.	Member, Manager and Chairman	20%	Note 1
Bruce Karsh c/o Oaktree Capital Management, L.P. 333 South Grand Avenue, 28 th Floor Los Angeles, CA 90071	U.S.	Member, Manager and President	20%	Note 1
John Frank c/o Oaktree Capital Management, L.P. 333 South Grand Avenue, 28 th Floor Los Angeles, CA 90071	U.S.	Member, Manager and Managing Principal	20%	Note 1
David Kirchheimer c/o Oaktree Capital Management, L.P. 333 South Grand Avenue, 28 th Floor Los Angeles, CA 90071	U.S.	Member, Manager, Chief Financial Officer and Chief Administrative Officer	20%	Note 1
Stephen Kaplan c/o Oaktree Capital Management, L.P. 333 South Grand Avenue, 28 th Floor Los Angeles, CA 90071	U.S.	Member and Manager	20%	Note 1
Todd Molz c/o Oaktree Capital Management, L.P. 333 South Grand Avenue, 28 th Floor Los Angeles, CA 90071	U.S.	Managing Director, General Counsel and Secretary	0%	0%
Richard Ting c/o Oaktree Capital Management, L.P. 333 South Grand Avenue, 28 th Floor Los Angeles, CA 90071	U.S.	Managing Director, Associate General Counsel and Assistant Secretary	0%	0%
Thomas Smith c/o Oaktree Capital Management, L.P. 333 South Grand Avenue, 28 th Floor Los Angeles, CA 90071	U.S.	Managing Director	0%	0%
Lisa Arakaki c/o Oaktree Capital Management, L.P. 333 South Grand Avenue, 28 th Floor Los Angeles, CA 90071	U.S.	Managing Director	0%	0%

FCC Form 314
Exhibit 14

Name and Address	Citizenship	Positional Interest	Percentage Vote	Percentage of Total Assets (debt plus equity)
Brian Beck c/o Oaktree Capital Management, L.P. 333 South Grand Avenue, 28 th Floor Los Angeles, CA 90071	U.S.	Managing Director	0%	0%
Emily Stephens c/o Oaktree Capital Management, L.P. 333 South Grand Avenue, 28 th Floor Los Angeles, CA 90071	U.S.	Managing Director	0%	0%
Kristin Scott c/o Oaktree Capital Management, L.P. 333 South Grand Avenue, 28 th Floor Los Angeles, CA 90071	U.S.	Managing Director	0%	0%
John Edwards c/o Oaktree Capital Management, L.P. 333 South Grand Avenue, 28 th Floor Los Angeles, CA 90071	U.S.	Managing Director	0%	0%
Martin Boskovich c/o Oaktree Capital Management, L.P. 333 South Grand Avenue, 28 th Floor Los Angeles, CA 90071	U.S.	Senior Vice President	0%	0%
Jay Ghiya c/o Oaktree Capital Management, L.P. 333 South Grand Avenue, 28 th Floor Los Angeles, CA 90071	U.S.	Senior Vice President	0%	0%
Jeffrey Joseph c/o Oaktree Capital Management, L.P. 333 South Grand Avenue, 28 th Floor Los Angeles, CA 90071	U.S.	Vice President	0%	0%
Philip McDermott c/o Oaktree Capital Management, L.P. 333 South Grand Avenue, 28 th Floor Los Angeles, CA 90071	U.S.	Assistant Vice President	0%	0%

** Oaktree Capital Group Holdings GP, LLC (“Oaktree GP LLC”) has voting and non-voting members. The operating agreement of Oaktree GP LLC includes the Commission’s insulating language with respect to the non-voting members and with respect to certain voting members for media matters. The operating agreement establishes a Media Company Committee comprised of the voting members listed above. Each member of the Media Company Committee has an equal one-fifth (1/5) vote. Voting members of Oaktree GP LLC who do not serve on the Media Company Committee are considered insulated members for purposes of any media investment. In addition, notwithstanding any other provision of the operating agreement, these insulated voting members may not vote for the removal of any member of the Media Company Committee except as expressly permitted under the Commission’s insulated member requirements. For the purposes of non-media related investments, all voting members of Oaktree GP LLC are permitted to vote with the percentage of all such members’ voting rights governed by Oaktree GP LLC’s operating agreement.

The current members of the Media Company Committee are five of its six founding members and have continuously retained control since its creation. The members of the Media Company Committee may be removed by a vote of

the members of the Media Company Committee or, in accordance with the FCC's rules and policies, by a vote of other LLC members if a member of the Media Company Committee is subject to bankruptcy proceedings or found by a court to have engaged in malfeasance, committed a felony or acted with gross negligence. However, members of the Media Company Committee may be appointed only by a vote of the members of the Media Company Committee. The Media Company Committee shall act by consensus or, absent a consensus, by the vote of a majority of its members.

Note 1: Because Oaktree GP LLC does not hold any equity interest in Oaktree Capital Group Holdings, L.P., each member is not proposed to hold any indirect equity interest in the licensee entities through Oaktree GP LLC. However, these members of the Media Company Committee will hold equity in the licensee entities through Oaktree Capital Group Holdings, L.P.