

Channel Study

REFERENCE		CH# 269D - 101.7 MHz, Pwr= 0.25 kW, HAAT=139.8M, COR= 1686 M								DISPLAY DATES	
39 35 00 N. 119 48 04 W.		Average Protected F(50-50)= 15.2 km Ave. F(50-10) 40 dBu= 50.4 54 dBu= 23.0 80 dBu= 4.8 100 dBu= 1.1								DATA 01-12-07 SEARCH 01-16-07	
CH CITY	CALL	TYPE STATE	AZI. <--	DIST FILE #	LAT. LNG.	Pwr(kW) HAAT(M)	COR(M) INT(km)	PRO(km) LICENSEE	*IN* (Overlap in km)	*OUT*	
269D Reno	K269FC	LIC C NV	0.0 180.0	0.01 BLFT20061107ADF	39 35 00 119 48 04	0.028 285	1686 42.4	12.7 Eastern Sierra Broadcastin	-51.36*	-42.41*	
271C3 Reno	RS0297	RSV N NV	72.0 252.0	0.30	39 35 03 119 47 52	25.000 -66	1657 2.3	22.7	-22.09*	-23.48*	
271C3 Reno	KRNV-F	LIC DCN NV	72.0 252.0	0.30 BMLH20030624AAS	39 35 03 119 47 52	4.842 -15	1708 1.6	14.9 Entravision Holdings, Llc	-21.42*	-15.69*	
269A Portola	AL6517	VAC CA	295.7 115.3	64.61 RM11048	39 49 59 120 28 54	6.000 256	1792 106.8	42.7 Eastern Sierra Broadcastin	-53.75	-17.63	
267C2 Fallon	KRNG	LIC CN NV	75.3 255.8	55.83 BLH19970722KA	39 42 30 119 10 16	1.650 720	2084 2.7	53.7 Sierra Nevada Christian Mu	33.25	1.07	
269D Stateline	K269DB	LIC DVN NV	189.9 9.8	70.33 BLFT19890424TE	38 57 33 119 56 26	0.035 -203	1982 13.7	4.3 Americom, A California Lim	36.64	4.48	
268A Truckee	KTKE	LIC ZCX CA	217.5 37.2	47.83 BLH20030529AFZ	39 14 29 120 08 20	0.014 603	2648 23.6	15.3 Todd Robinson, Inc.	8.20	8.49	
267D Reno	KRNG-F	LIC DCN NV	75.1 255.4	30.03 BLFTB19981222TE	39 39 07 119 27 46	0.100 498	2396 0.7	23.2 Sierra Nv Christian Music	9.45	5.71	
215D Truckee	K215DS	LIC DV CA	202.9 22.8	31.34 BLFT20030708ABF	39 19 24 119 56 35	0.000 596	3108 0.5	0.5 California State Universit	3.0R	28.3M	
268D Truckee	KTKE-1	APP DC CA	203.7 23.6	43.50 BNPFTB20060818AA	39 13 29 120 00 16	0.009 -659	1973 4.3	3.1 Todd Robinson, Inc.	23.81	17.31	
267D Incline Village	K267AA	LIC DVN NV	195.5 15.5	38.64 BLFT19940613TH	39 14 53 119 55 17	0.000 -190	2277 0.0	1.4 Americom, A California Lim	20.10	36.10	
272D Stateline, Etc.	K272DA	LIC DHN NV	210.1 29.9	64.31 BLFT19880107TB	39 04 56 120 10 31	0.048 335	2233 0.5	15.8 Citadel Broadcasting Compa	49.71	47.41	
270B Shingle Springs	KNTY	LIC ZC CA	230.8 50.0	127.43 BLH20010925AAQ	38 51 12 120 56 23	47.000 -93	621 44.3	35.7 Entravision Holdings, Llc	66.46	56.77	

Terrain database is NGDC 30 SEC

ERP and HAAT on direct-line with reference station.

***affixed to 'IN' or 'Out' values = site inside protected contour.

Compliance with C.F.R. 74.1204

The proposed FM Translator is located within the protected 60 dBu contour of second adjacent channel station KRNV-F, channel 271C3, Reno, NV. The predicted F(50-50) field strength of KRNV-F at the proposed translator site is 124.2 dBu, (see Exhibit 12A-1). Therefore, the respective predicted interfering contour generated by the proposed FM Translator is 164.2 dBu. This interfering contour extends approximately 0.7 meters from the proposed transmit antenna, and the area of overlap is unpopulated.

Two factors have been investigated to determine this absence of population:

- 1.) Computer software which uses the centroid method of determining population centers, based on the 2000 census data, has determined that there are no persons within the area of overlap.
- 2.) Examination of the USGS topographic map (see Exhibit 12A-2) reveals no regularly occupied structures within the area of overlap.

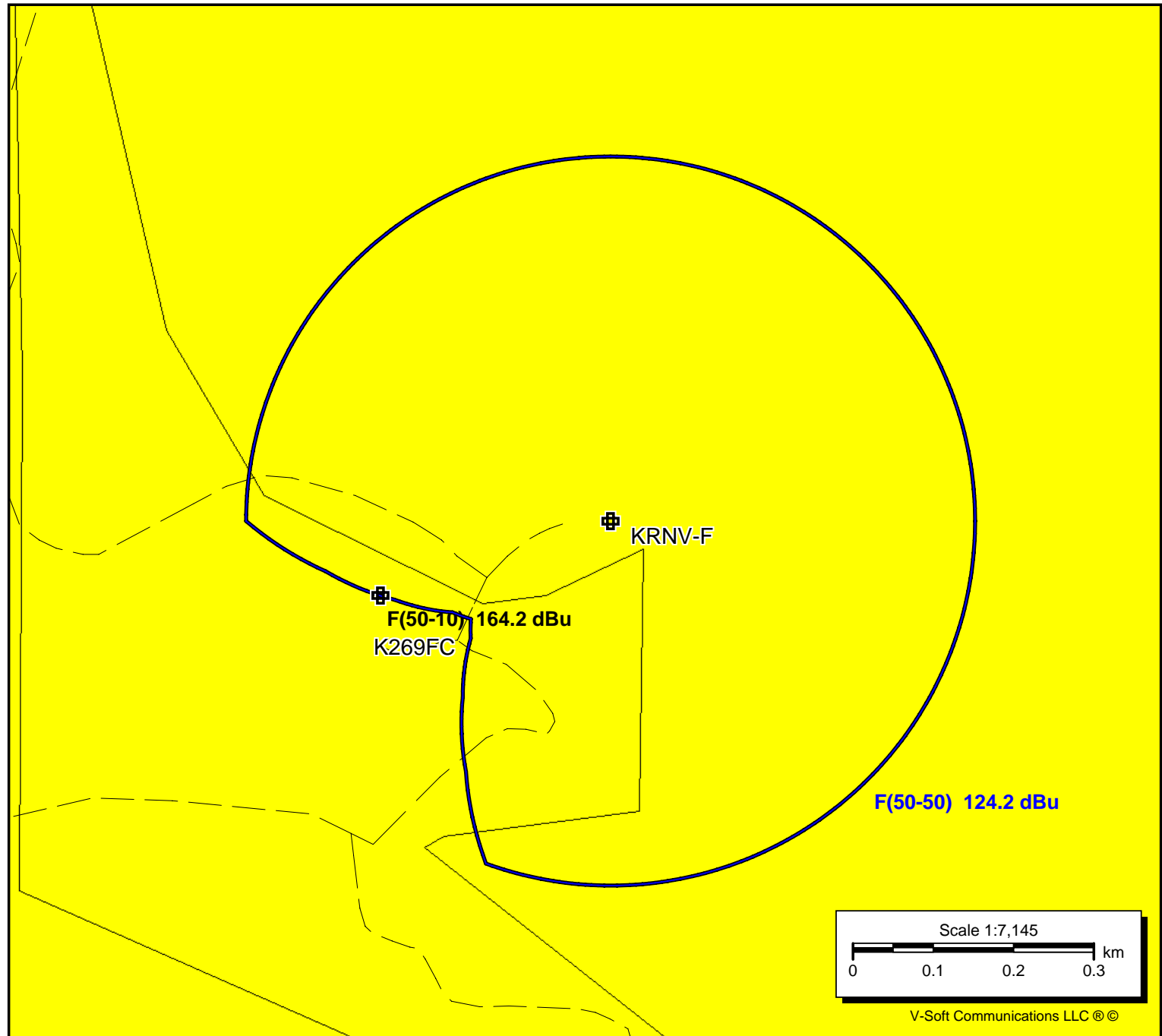
Therefore, Eastern Sierra Broadcasting respectfully requests a waiver of C.F.R. 74.1204 based on no population within the area of predicted interference.

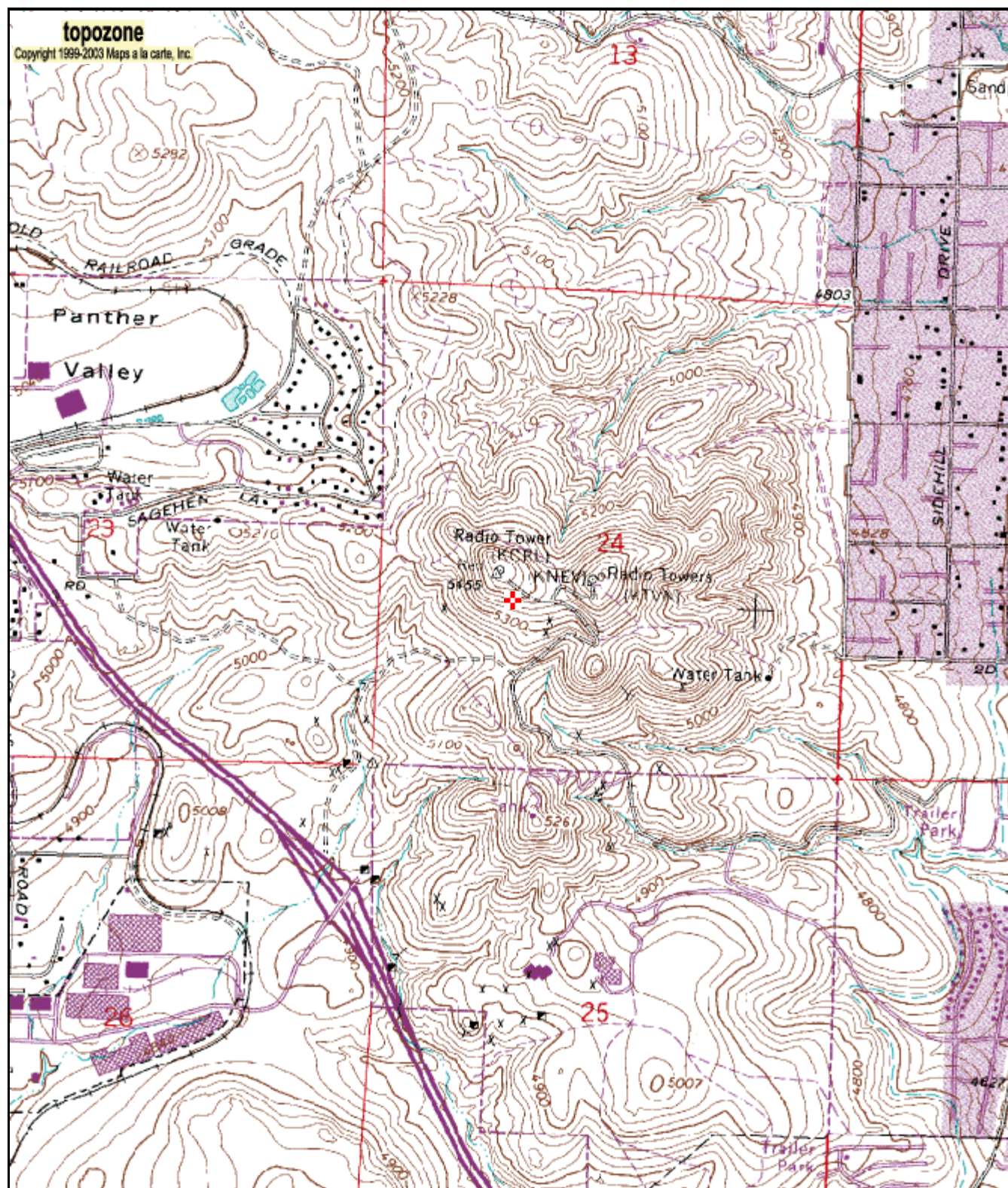
K269FC

Latitude: 39-35-00 N
Longitude: 119-48-04 W
ERP: 0.25 kW
Channel: 269
Frequency: 101.7 MHz
AMSL Height: 1686.0 m
Horiz. Pattern: Omni
Vert. Pattern: No
Prop Model: Longley/Rice
Climate: Cont temperate
Conductivity: 0.0050
Dielec Const: 15.0
Refractivity: 311.0
Receiver Ht AG: 2.0 m
Receiver Gain: 0 dB
Time Variability: 50.0%
Sit. Variability: 50.0%
ITM Mode: Broadcast

KRNV-F

BMLH20030624AAS
Latitude: 39-35-03 N
Longitude: 119-47-52 W
ERP: 11.00 kW
Channel: 271
Frequency: 102.1 MHz
AMSL Height: 1708.0 m
Horiz. Pattern: Directional
Vert. Pattern: No
Prop Model: Longley/Rice
Climate: Cont temperate
Conductivity: 0.0050
Dielec Const: 15.0
Refractivity: 311.0
Receiver Ht AG: 2.0 m
Receiver Gain: 0 dB
Time Variability: 50.0%
Sit. Variability: 50.0%
ITM Mode: Broadcast





0 0.3 0.6 0.9 1.2 1.5 km
0 0.2 0.4 0.6 0.8 1 mi

39° 35' 00"N, 119° 48' 04"W (NAD27)
KCRL-TV Tower (Los Alamos), USGS Reno (NV) Quadrangle
Projection is UTM Zone 11 NAD83 Datum

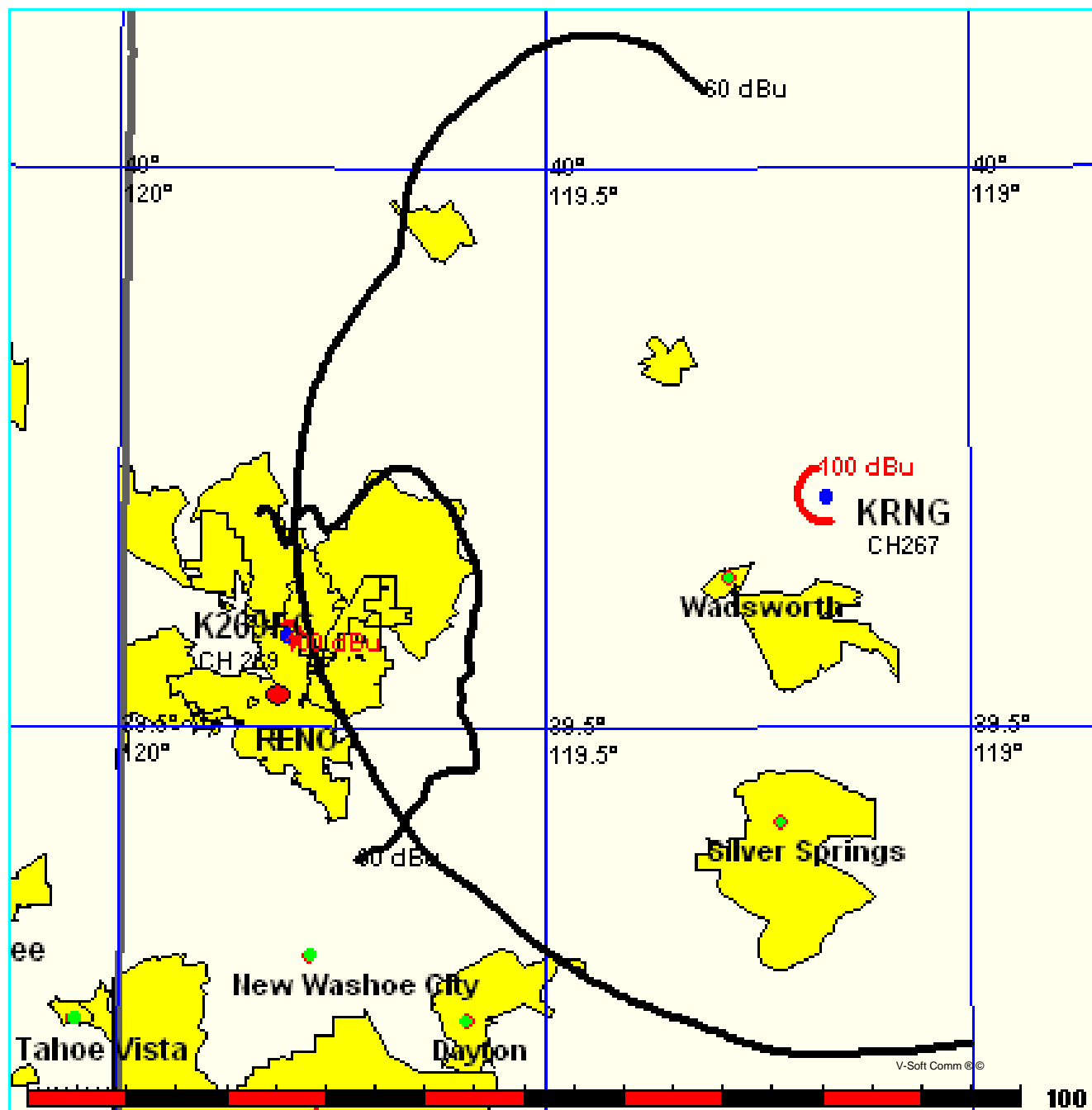
* M
G
M=15.213
G=-1.787

FMCommander Allocation Study
01-16-2007

K269FC CH 269 D
0.25 kW 1686 M COR
Prot. = 60 dBu
Intef. = 100 dBu

KRNG CH 267 C2 BLH19970722KA
1.65 kW, 2084 M COR
Prot. = 60 dBu
Intef. = 100 dBu

Scale = 1:1,000,000

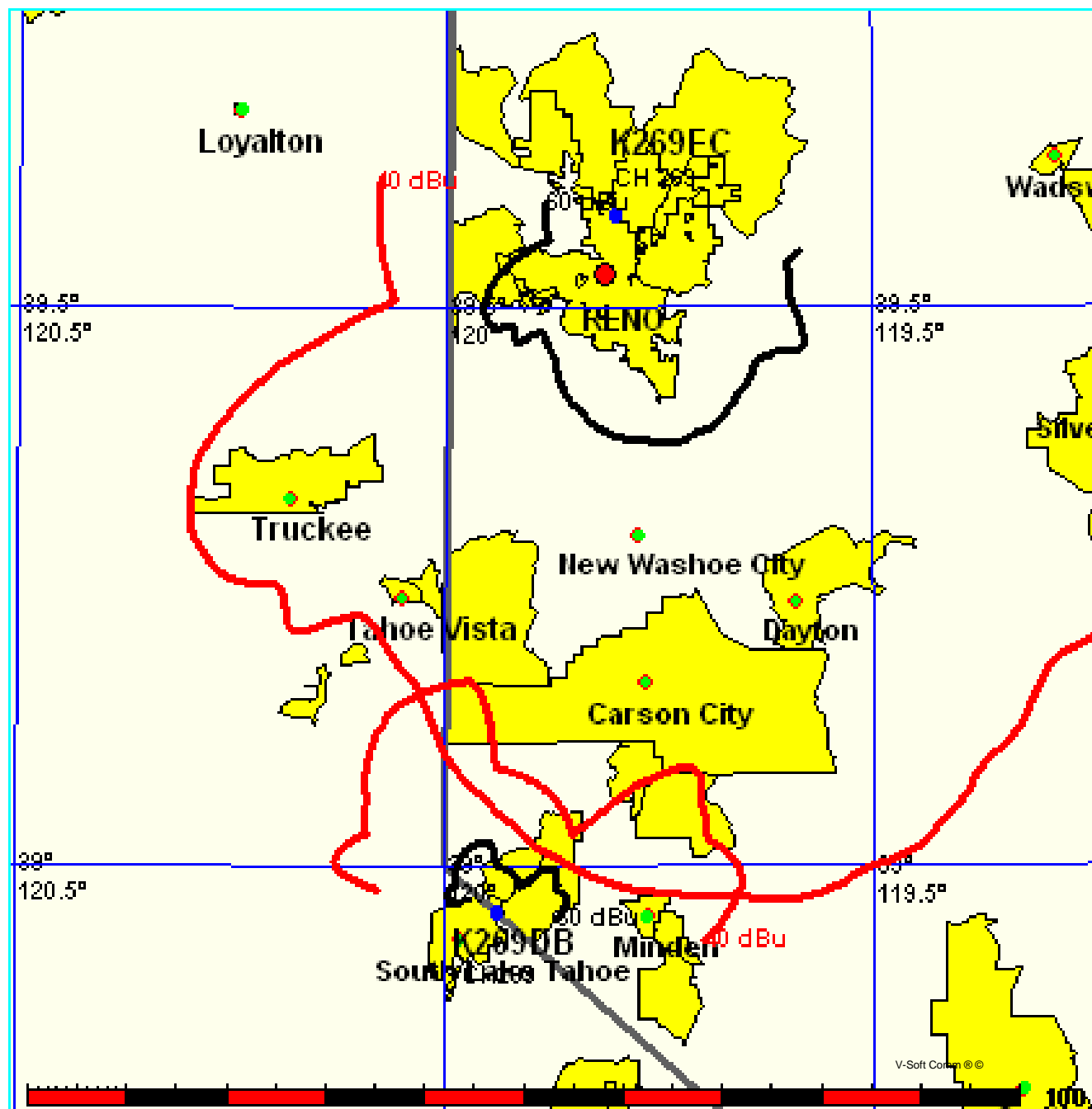


FMCommander Allocation Study
01-16-2007

K269FC CH 269 D
0.25 kW 1686 M COR
Prot. = 60 dBu
Intef. = 40 dBu

K269DB CH 269 D BLFT19890424TE
0.04 kW, 1982 M COR DA
Prot. = 60 dBu
Intef. = 40 dBu

Scale = 1:1,000,000

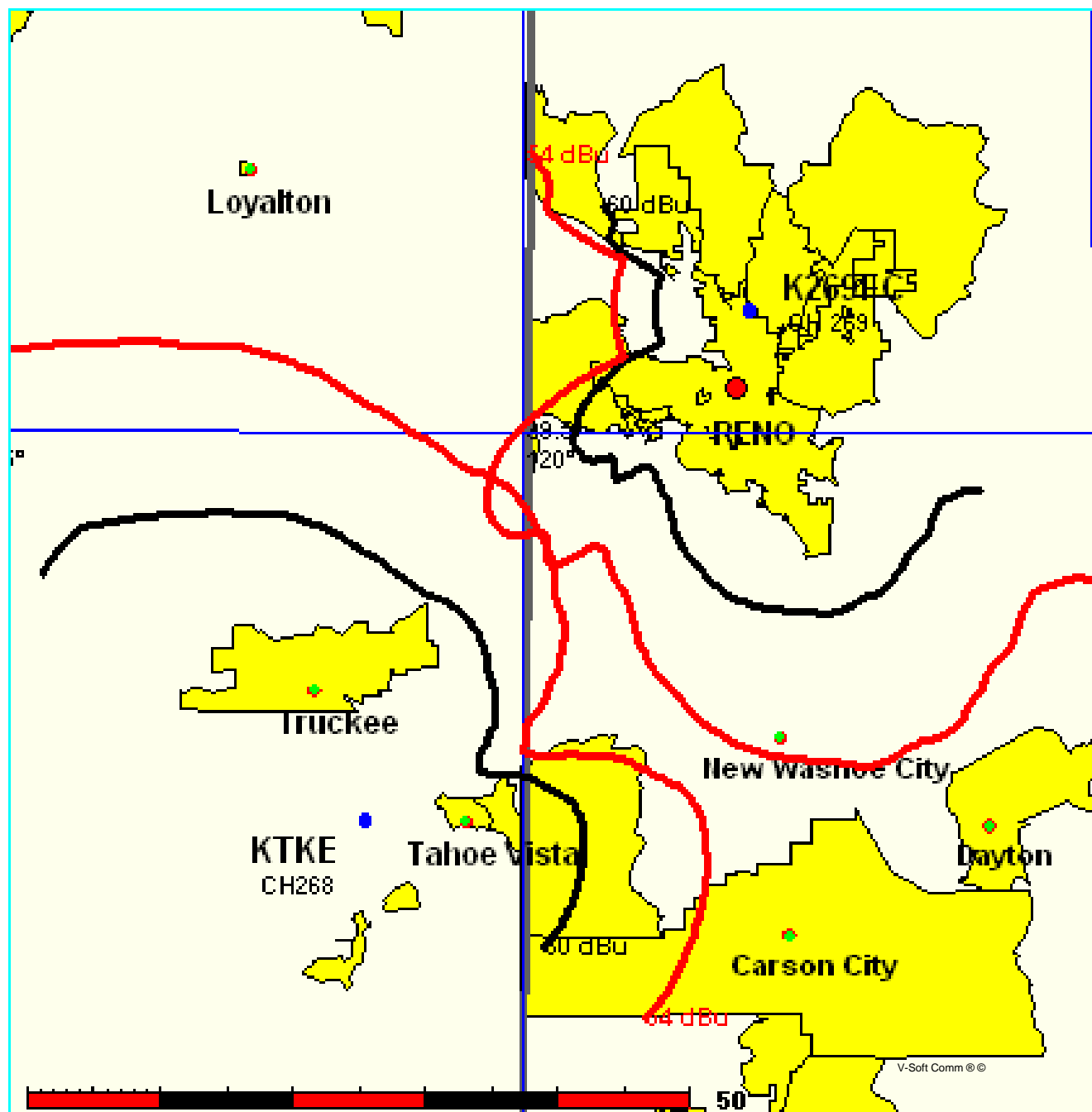


FMCommander Allocation Study
01-16-2007

K269FC CH 269 D
0.25 kW 1686 M COR
Prot. = 60 dBu
Intef. = 54 dBu

KTKE CH 268 A BLH20030529AFZ
0.14 kW, 2648 M COR DA
Prot. = 60 dBu
Intef. = 54 dBu

Scale = 1:750,000



FMCommander Allocation Study
01-16-2007

K269FC CH 269 D
0.25 kW 1686 M COR
Prot. = 60 dBu
Intef. = 100 dBu

KRNG-F CH 267 D BLFTB19981222TE
0.12 kW, 2396 M COR DA
Prot. = 60 dBu
Intef. = 100 dBu

Scale = 1:500,000

