

Engineering Statement Regarding Second &/or Third Adjacent Channel Interference

This application proposes an FM translator that will, according to the FCC Rules cause interference to facilities on either or both of the second or third adjacent channels in the area immediately surrounding the proposed FMT site.

It either or both cases, the applicant will demonstrate with map diagrams and/or text descriptions that demonstrate that the interference, while predicted, will not cause actual interference.

The applicant hereby requests a waiver of section 73.1204 of the rules based on paragraph 73.1204(d) of the rules, in that the proposed area of interference is uninhabited and/or unpopulated and thus will there not cause any actual interference.

Further, the applicant hereby requests that the Commission allow the applicant to calculate and demonstrate the area of interference using the well established principles of Undesirable/Desirable signal ratio of 40 dBu, as outlined in section 73.215(2) of the rules.

In making these requests, the applicant submits that by granting them, the Commission would allow additional service that would otherwise not be permitted, and that are in conformity with the Commission's rules. The public interest would thus be served.

Channel Study										
Proposed 243 Colorado Springs										
REFERENCE	CH#	243D	-	96.5 MHz,	Pwr= 0.01 kW,	HAAT=0.0 M,	COR= 2718 M	DISPLAY DATES		
38 44 43 N				Average Protected F(50-50)= 3.15 km				DATA	07-12-03	
104 51 39 W	Ave.	F(50-10)	40 dBu= 10.2	54 dBu= 4.4	80 dBu= 1.6	100 dBu= .2		SEARCH	07-14-03	
CH CITY	CALL	TYPE STATE	AZI. <--	DIST FILE #	LAT. LNG.	Pwr(kW) HAAT(M)	COR(M) INT(km)	PRO(km) LICENSEE	*IN* (Overlap in km)	*OUT*
245C Pueblo	KCCY. C	CP CX CO	0.0 180.0	0.00 BPH20000724ABL	38 44 43 104 51 39	40.000 904	904 0.0	92.5 Capstar Tx Limited Partner	-14.29*<	-92.54*<
245C Pueblo	KCCY	LIC CY CO	270.0 90.0	0.05 BLH19940217KC	38 44 43 104 51 41	72.000 1167	1167 0.0	105.3 Capstar Tx Limited Partner	-18.12*<	-105.27*<
243D Colorado Springs	AP243	APP DE CO	0.0 180.0	0.00 BNPFT20030312AJL	38 44 43 104 51 39	0.000 676	676 20.2	0.2 Educational Communications	-5.08*<	-20.42*<
241C2 Fountain	KMOM	LIC NCN CO	0.0 180.0	0.00 BMLH20011002AAE	38 44 43 104 51 39	0.450 878	878 0.0	45.5 Amfm Texas Licenses Limited	-4.40*<	-45.57*<
241C2 Fountain	KMOM. C	CP ZCN CO	0.0 180.0	0.00 BMPH19970513IE	38 44 43 104 51 39	1.700 878	878 0.0	58.3 Amfm Texas Licenses Limited	-5.70*<	-58.32*<
241C2 Fountain	KMOM. A	APP NCX CO	293.2 113.2	0.08 BPH20021217ABB	38 44 44 104 51 42	0.450 1103	1103 0.0	49.9 Amfm Radio Licenses, Lic	-3.02*<	-49.89*<
241C2 Fountain	KMOM. A	APP NCX CO	293.2 113.2	0.08 BPH20021217ABB	38 44 44 104 51 42	0.460 1103	1103 0.0	50.2 Amfm Radio Licenses, Lic	-3.03*<	-50.10*<
241C2 Fountain	KMOM. A	APP NCX CO	293.2 113.2	0.08 BPH20021217ABB	38 44 44 104 51 42	0.450 1140	1140 0.0	50.5 Amfm Radio Licenses, Lic	-3.02*<	-50.48*<
243C Evergreen	KXPK	LIC CN CO	332.7 152.7	116.62 BLH19940701KC	39 40 35 105 29 09	100.000 637	637 18.1	93.2 Entravision Holdings, Lic	-87.20<	5.28
240D Cripple Creek Translator for KKCSFM,	K240CH	LIC DCN CO	270.7 90.7	27.46 BLFT19940314TE	38 44 52 105 10 36	0.034 -179	-179 0.0	4.3 Walton Stations - Colorado	25.44	23.16
243D Salida	AP243	APP C CO	252.4 72.4	105.79 BNPFT20030317CZG	38 27 11 106 01 00	0.010 1231	1231 4.3	18.3 Radio Assist Ministry Inc.	35.26	83.13
241D Lakewood	AP241	APP DE CO	347.3 167.3	72.83 BNPFT20030312ALH	39 23 06 105 02 51	0.000 242	242 0.0	2.8 Educational Communications	69.61	69.97
241D Ponderosa Park	AP241	APP C CO	13.3 193.3	77.07 BNPFT20030310AXJ	39 25 14 104 39 15	0.050 57	57 0.0	6.5 Way-fm Media Group, Inc.	72.84	70.52
243D Boulder	KXPKF1	LIC DCN CO	347.5 167.5	138.28 BLFTB19950119TD	39 57 38 105 12 44	0.001 -7	-7 20.0	1.7 Entravision Holdings, Lic	129.77	116.56

***Affixed to 'IN' or 'Out' values = site inside protected contour.
ERP and HAAT are on direct line to and from reference station. "<" = Contour Overlap

Terrain and Contour Study

N. Lat. = 38 44 43 W. Lng. = 104 51 39

HAAT and Distance to Contour - FCC Method - 03 Arc. Sec.

Azi.	AV EL	HAAT	ERP kW	dBk	Field	60-F5	100-F1
000	1923.3	794.7	0.0002	-37.20	0.138	2.91	0.03
030	1868.4	849.6	0.0018	-27.36	0.428	8.14	0.10
060	1829.7	888.3	0.0083	-20.83	0.909	15.08	0.20
090	1778.5	939.5	0.0083	-20.83	0.909	15.36	0.20
120	1757.6	960.4	0.0018	-27.36	0.428	8.32	0.10
150	1826.8	891.2	0.0002	-37.20	0.138	2.93	0.03
180	2041.9	676.1	0.0003	-34.70	0.184	3.77	0.04
210	2399.6	318.4	0.0002	-37.62	0.132	2.55	0.03
240	2792.1	-74.1	0.0003	-35.34	0.171	1.61	0.04
270	3046.4	-328.4	0.0003	-35.34	0.171	1.61	0.04
300	2989.5	-271.5	0.0002	-37.62	0.132	1.61	0.03
330	2328.1	389.9	0.0003	-34.70	0.184	3.53	0.04

Ave El= 2215.16 M HAAT= 502.84 M AMSL= 2718

Channel Study
Proposed 243 Colorado Springs vs KXPB

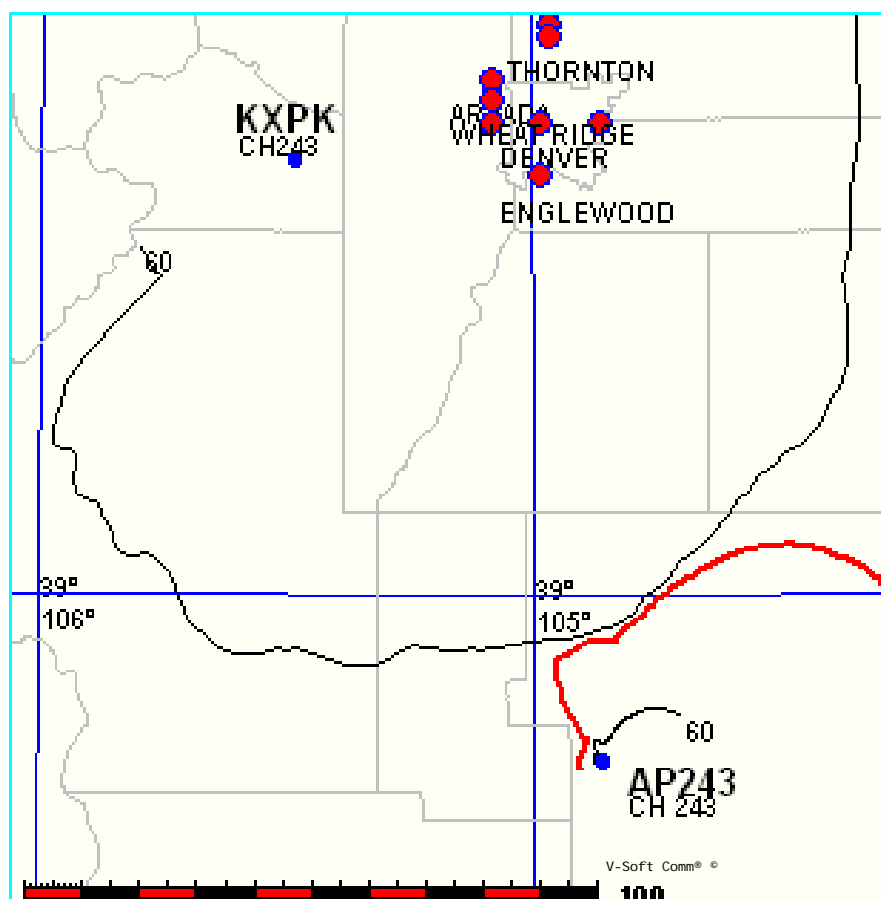
FMCONT Allocation Study

07-14-2003

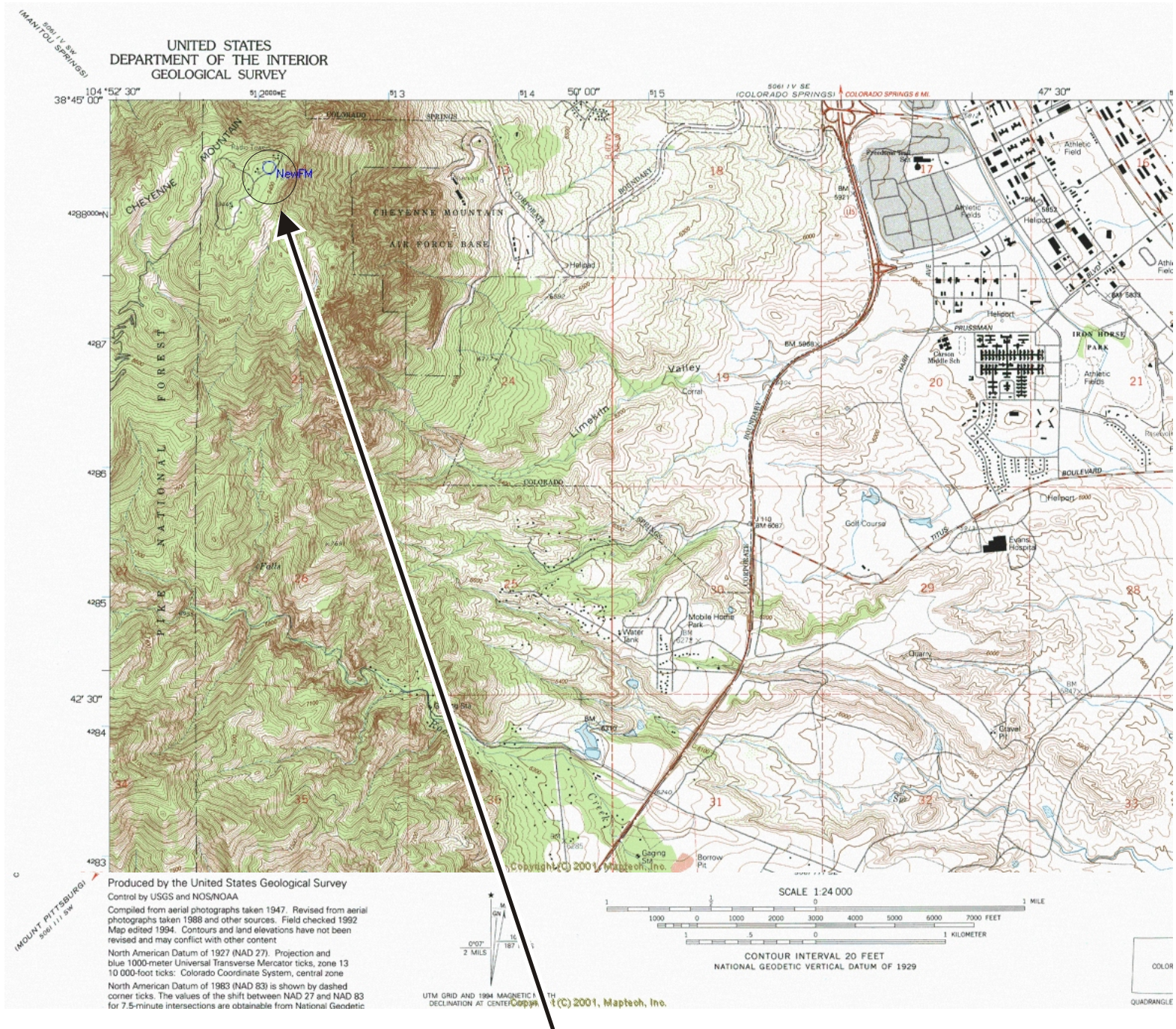
AP243 CH 243 D
.01 kW 2718M COR DA
Prot. = 60 dBu
Intef. = 40 dBu

KXPB CH 243 C
100kW, 3281 M COR
Prot. = 60 dBu
Intef. = 40 dBu

1: 1, 398, 438



in 100 dBu Interference Contour



100 dBu
Interference Contour
Uninhabited/Unpopulated