

Parties to the Application

The tables below, which correspond to the table included in Section III, Item 4(a), list the following:

- 1) Names and address¹ of the Assignee and each party to the application holding an attributable interest.
- 2) Citizenship.
- 3) Positional Interest: Office, director, general partner, limited partner, LLC member, investor, creditor attributable under the equity, debt plus standard, etc.
- 4) Percentage of votes.
- 5) Percentage of total assets (debt plus equity).²

Figures 1 and 2, attached hereto, depict the ownership structure detailed below.

Capstar TX LLC, the Assignee, has the following officers, directors and controlling entities, all of which use the address 2625 S. Memorial Drive, Tulsa, OK 74129:

	(1)	(2)	(3)	(4)	(5)
1.	Capstar TX LLC	U.S.	Proposed Assignee	--	--
2.	Richard J. Bressler	U.S.	CFO, President	0	0
3.	Jeff Littlejohn	U.S.	EVP-Engineering & Systems Integration-IHM	0	0
4.	Robert H. Walls, Jr.	U.S.	EVP, General Counsel, Secretary	0	0
5.	Steven Macri	U.S.	EVP and CFO-IHM	0	0
6.	Scott T. Bick	U.S.	SVP-Tax	0	0
7.	Brian D. Coleman	U.S.	SVP, Treasurer, Assistant Secretary	0	0
8.	Stephen G. Davis	U.S.	SVP-Real Estate, Facilities and Capital Management	0	0
9.	Hamlet T. Newsom, Jr.	U.S.	VP, Associate General Counsel, Assistant Secretary	0	0
10.	Capstar Radio Operating Company	U.S.	Member	100	100

¹ An address for each individual is provided only once—in the first table in which that individual appears. Bain Capital Investors, LLC (“Bain”) is located at John Hancock Tower, 200 Clarendon Street, Boston, MA 02116. Thomas H. Lee Partners (“Lee”) is located at 100 Federal Street, 35th Floor, Boston, MA 02110.

² The information provided in response to Item 4(a) subpart 5 is the percentage of total voting and non-voting equity in iHeartCommunications, Inc. or its licensee subsidiaries held by each party to the application, after applying the correct multiplier, if any. No debt or non-attributable equity holder will have an attributable interest in the Assignee by virtue of the “equity debt plus” rule. See 47 C.F.R. § 73.3555, Note 2(i).

Capstar Radio Operating Company, the sole member of Capstar TX LLC, has the following officers, directors and controlling entities, all of which use the address 2625 S. Memorial Drive, Tulsa, OK 74129:

	(1)	(2)	(3)	(4)	(5)
1.	Capstar Radio Operating Company	U.S.	--	--	--
2.	Richard J. Bressler	U.S.	CFO, President, Director	0	0
3.	Jeff Littlejohn	U.S.	EVP-Engineering & Systems Integration-IHM	0	0
4.	Robert H. Walls, Jr.	U.S.	EVP, General Counsel, Secretary, Director	0	0
5.	Steven Macri	U.S.	EVP and CFO-IHM	0	0
6.	Scott T. Bick	U.S.	SVP-Tax	0	0
7.	Brian D. Coleman	U.S.	SVP, Treasurer, Assistant Secretary	0	0
8.	Stephen G. Davis	U.S.	SVP-Real Estate, Facilities and Capital Management	0	0
9.	Hamlet T. Newsom, Jr.	U.S.	VP, Associate General Counsel, Assistant Secretary	0	0
10.	AMFM Texas Broadcasting, LP	U.S.	Shareholder	100	100

AMFM Texas Broadcasting, L.P., the sole shareholder of Capstar Radio Operating Company, has the following controlling entities, all of which use the address 2625 S. Memorial Drive, Tulsa, OK 74129:

	(1)	(2)	(3)	(4)	(5)
1.	AMFM Texas Broadcasting, LP	U.S.	--	--	--
2.	AMFM Broadcasting, Inc.	U.S.	General Partner	100	1
3.	AMFM Texas, LLC	U.S.	Limited Partner	0	99

AMFM Texas, LLC, the limited partner of AMFM Texas Broadcasting, L.P., has the following officers, directors and controlling entities, all of which use the address 2625 S. Memorial Drive, Tulsa, OK 74129:

	(1)	(2)	(3)	(4)	(5)
1.	AMFM Texas, LLC	U.S.	--	--	--
2.	Richard J. Bressler	U.S.	CFO, President	0	0
3.	Jeff Littlejohn	U.S.	EVP-Engineering & Systems Integration-IHM	0	0
4.	Robert H. Walls, Jr.	U.S.	EVP, General Counsel, Secretary	0	0
5.	Steven Macri	U.S.	EVP and CFO-IHM	0	0
6.	Brian D. Coleman	U.S.	SVP, Treasurer, Assistant Secretary	0	0
7.	Stephen G. Davis	U.S.	SVP-Real Estate, Facilities and Capital Management	0	0
8.	Hamlet T. Newsom, Jr.	U.S.	VP, Associate General Counsel, Assistant Secretary	0	0
9.	Scott T. Bick	U.S.	SVP-Tax	0	0
10.	AMFM Broadcasting, Inc.	U.S.	Sole Member	100	100

AMFM Broadcasting, Inc., the general partner of AMFM Texas Broadcasting, L.P. and the sole member of AMFM Texas LLC, has the following officers, directors and controlling entities, all of which use the address 2625 S. Memorial Drive, Tulsa, OK 74129:

	(1)	(2)	(3)	(4)	(5)
1.	AMFM Broadcasting, Inc.	U.S.	--	--	--
2.	Richard J. Bressler	U.S.	CFO, President, Director	0	0
3.	Jeff Littlejohn	U.S.	EVP-Engineering & Systems Integration-IHM	0	0
4.	Robert H. Walls, Jr.	U.S.	EVP, General Counsel, Secretary, Director	0	0
5.	Steven Macri	U.S.	EVP and CFO-IHM	0	0
6.	Brian D. Coleman	U.S.	SVP, Treasurer, Assistant Secretary	0	0
7.	Stephen G. Davis	U.S.	SVP-Real Estate, Facilities and Capital Management	0	0
8.	Hamlet T. Newsom, Jr.	U.S.	VP, Associate General Counsel, Assistant Secretary	0	0
9.	Scott T. Bick	U.S.	SVP-Tax	0	0
10.	AMFM Operating, Inc.	U.S.	Shareholder	100	100

AMFM Operating, Inc., the sole shareholder of AMFM Broadcasting, Inc., has the following officers, directors and controlling entities, all of which use the address 2625 S. Memorial Drive, Tulsa, OK 74129:

	(1)	(2)	(3)	(4)	(5)
1.	AMFM Operating, Inc.	U.S.	--	--	--
2.	Richard J. Bressler	U.S.	CFO, President, Director	0	0
3.	Jeff Littlejohn	U.S.	EVP-Engineering & Systems Integration-IHM	0	0
4.	Robert H. Walls, Jr.	U.S.	EVP, General Counsel, Secretary, Director	0	0
5.	Steven Macri	U.S.	EVP and CFO-IHM	0	0
6.	Brian D. Coleman	U.S.	SVP, Treasurer, Assistant Secretary	0	0
7.	Stephen G. Davis	U.S.	SVP-Real Estate, Facilities and Capital Management	0	0
8.	Hamlet T. Newsom, Jr.	U.S.	VP, Associate General Counsel, Assistant Secretary	0	0
9.	Scott T. Bick	U.S.	SVP-Tax	0	0
10.	Clear Channel Holdings, Inc.	U.S.	Shareholder	100	100

Clear Channel Holdings, Inc., the sole shareholder of AMFM Operating, Inc., has the following officers, directors and controlling entities, all of which use the address 2625 S. Memorial Drive, Tulsa, OK 74129:

	(1)	(2)	(3)	(4)	(5)
1.	Clear Channel Holdings, Inc.	U.S.	--	--	--
2.	Richard J. Bressler	U.S.	CFO, President, Director	0	0
3.	Robert H. Walls, Jr.	U.S.	EVP, General Counsel, Secretary, Director	0	0
4.	Brian D. Coleman	U.S.	SVP, Treasurer, Assistant Secretary	0	0
5.	Hamlet T. Newsom, Jr.	U.S.	VP, Associate General Counsel, Assistant Secretary	0	0
6.	Scott T. Bick	U.S.	SVP-Tax	0	0
7.	iHeartCommunications, Inc.	U.S.	Shareholder	100	100

iHeartCommunications, Inc., the sole shareholder of Clear Channel Holdings, Inc., has the following officers, directors and controlling entities, all of which use the address 2625 S. Memorial Drive, Tulsa, OK 74129, unless otherwise indicated:

	(1)	(2)	(3)	(4)	(5)
1.	iHeart Communications, Inc.	U.S.	--	--	--
2.	Mark P. Mays	U.S.	Director	0	0
3.	Robert H. Walls, Jr.	U.S.	EVP, General Counsel, Secretary	0	0
4.	Scott D. Hamilton	U.S.	SVP, CAO, Assistant Secretary	0	0
5.	Jessica Marventano	U.S.	SVP-Government Affairs	0	0
6.	William B. Feehan	U.S.	EVP, Human Resources	0	0
7.	Brian D. Coleman	U.S.	SVP, Treasurer	0	0
8.	Scott T. Bick	U.S.	SVP-Tax	0	0
9.	Hamlet T. Newsom, Jr.	U.S.	VP, Associate General Counsel, Assistant Secretary	0	0
10.	David Rokosky	U.S.	VP-Procurement	0	0
11.	Juliana F. Hill	U.S.	SVP-Liquidity & Asset Management	0	0
12.	Steven Cutler	U.S.	SVP-Business Development & Corporate Strategy	0	0
13.	C. William Eccleshare	U.K.	CEO-Outdoor	0	0
14.	Peter Gerrald	U.S.	SVP-CIO	0	0
15.	Wendy Goldberg	U.S.	EVP-Communications	0	0
16.	Effie Epstein	U.S.	VP, Planning and Investor Relations	0	0
17.	Robert W. Pittman	U.S.	Chairman, CEO, Director	0	0
18.	Duaine Smith	U.S.	SVP and General Auditor	0	0
19.	Irving L. Azoff 1100 Glendon Avenue Suite 2000 Los Angeles, CA 90024	U.S.	Director	0	0

	(1)	(2)	(3)	(4)	(5)
20.	Matthew J. Freeman c/o Bain Capital Investors, LLC	U.S.	Director	0	0
21.	John P. Connaughton c/o Bain Capital Investors, LLC	U.S.	Director	0	0
22.	Ian K. Loring c/o Bain Capital Investors, LLC	U.S.	Director	0	0
23.	Blair E. Hendrix c/o Bain Capital Investors, LLC	U.S.	Director	0	0
24.	Richard J. Bressler	U.S.	CFO, President, Director	0	0
25.	James C. Carlisle	U.S.	Director	0	0
26.	Julia B. Donnelly	U.S.	Director	0	0
27.	Scott M. Sperling	U.S.	Director	0	0
28.	David C. Abrams c/o Joseph F. Mazzella 200 Clarendon St., 59 th Floor Boston, MA 02116	U.S.	Director	0	0
29.	Jonathon S. Jacobson c/o Joseph F. Mazzella 200 Clarendon St., 59 th Floor Boston, MA 02116	U.S.	Director	0	0
30.	iHeartMedia Capital I, LLC	U.S.	Shareholder	100	100

iHeartMedia Capital I, LLC, the sole shareholder of iHeartCommunications, Inc., has the following officers, directors and controlling entities, all of which use the address 2625 S. Memorial Drive, Tulsa, OK 74129, unless otherwise indicated:

	(1)	(2)	(3)	(4)	(5)
1.	iHeartMedia Capital I, LLC	U.S.	--	--	--
2.	Mark P. Mays	U.S.	Manager	0	0
3.	Robert H. Walls, Jr.	U.S.	EVP, General Counsel, Secretary	0	0
4.	Scott D. Hamilton	U.S.	SVP, CAO, Assistant Secretary	0	0
5.	Jessica Marventano	U.S.	SVP-Government Affairs	0	0
6.	William B. Feehan	U.S.	EVP, Human Resources	0	0
7.	Brian D. Coleman	U.S.	SVP, Treasurer	0	0
8.	Scott T. Bick	U.S.	SVP-Tax	0	0
9.	Hamlet T. Newsom, Jr.	U.S.	VP, Associate General Counsel, Assistant Secretary	0	0
10.	David Rokosky	U.S.	VP-Procurement	0	0
11.	Juliana F. Hill	U.S.	SVP-Liquidity & Asset Management	0	0
12.	Steven Cutler	U.S.	EVP-Business Development & Corporate Strategy	0	0

	(1)	(2)	(3)	(4)	(5)
13.	C. William Eccleshare	U.K.	CEO—Outdoor	0	0
14.	Peter Gerrald	U.S.	SVP-CIO	0	0
15.	Wendy Goldberg	U.S.	EVP-Communications	0	0
16.	Effie Epstein	U.S.	VP, Planning and Investor Relations	0	0
17.	Robert W. Pittman	U.S.	Chairman, CEO, Manager	0	0
18.	Duaine Smith	U.S.	SVP and General Auditor	0	0
19.	Irving L. Azoff 1100 Glendon Avenue Suite 2000 Los Angeles, CA 90024	U.S.	Manager	0	0
20.	Matthew J. Freeman c/o Bain Capital Investors, LLC	U.S.	Manager	0	0
21.	John P. Connaughton c/o Bain Capital Investors, LLC	U.S.	Manager	0	0
22.	Ian K. Loring c/o Bain Capital Investors, LLC	U.S.	Manager	0	0
23.	Blair E. Hendrix c/o Bain Capital Investors, LLC	U.S.	Manager	0	0
24.	Richard J. Bressler	U.S.	CFO, President, Manager	0	0
25.	James C. Carlisle	U.S.	Manager	0	0
26.	Julia B. Donnelly	U.S.	Manager	0	0
27.	Scott M. Sperling	U.S.	Manager	0	0
28.	David C. Abrams c/o Joseph F. Mazzella 200 Clarendon St., 59 th Floor Boston, MA 02116	U.S.	Manager	0	0
29.	Jonathon S. Jacobson c/o Joseph F. Mazzella 200 Clarendon St., 59 th Floor Boston, MA 02116	U.S.	Manager	0	0
30.	iHeartMedia Capital II, LLC	U.S.	Sole Member	100	100

iHeartMedia Capital II, LLC, the sole member of iHeartMedia Capital I, LLC, Inc., has the following officers, directors and controlling entities, all of which use the address 2625 S. Memorial Drive, Tulsa, OK 74129, unless otherwise indicated:

	(1)	(2)	(3)	(4)	(5)
1.	iHeartMedia Capital II, LLC	U.S.	--	--	--
2.	Mark P. Mays	U.S.	Manager	0	0
3.	Robert H. Walls, Jr.	U.S.	EVP, General Counsel, Secretary	0	0
4.	Scott D. Hamilton	U.S.	SVP, CAO, Assistant Secretary	0	0
5.	Jessica Marventano	U.S.	SVP-Government Affairs	0	0
6.	William B. Feehan	U.S.	EVP, Human Resources	0	0
7.	Brian D. Coleman	U.S.	SVP, Treasurer	0	0
8.	Scott T. Bick	U.S.	SVP-Tax	0	0
9.	Hamlet T. Newsom, Jr.	U.S.	VP, Associate General Counsel, Assistant Secretary	0	0
10.	David Rokosky	U.S.	VP-Procurement	0	0
11.	Juliana F. Hill	U.S.	SVP-Liquidity & Asset Management	0	0
12.	Steven Cutler	U.S.	EVP-Business Development & Corporate Strategy	0	0
13.	C. William Eccleshare	U.K.	CEO-Outdoor	0	0
14.	Peter Gerrald	U.S.	SVP-CIO	0	0
15.	Wendy Goldberg	U.S.	EVP-Communications	0	0
16.	Effie Epstein	U.S.	VP, Planning and Investor Relations	0	0
17.	Robert W. Pittman	U.S.	Chairman, CEO, Manager	0	0
18.	Duaine Smith	U.S.	SVP and General Auditor	0	0
19.	Irving L. Azoff 1100 Glendon Avenue Suite 2000 Los Angeles, CA 90024	U.S.	Manager	0	0
20.	Matthew J. Freeman c/o Bain Capital Investors, LLC	U.S.	Manager	0	0
21.	John P. Connaughton c/o Bain Capital Investors, LLC	U.S.	Manager	0	0
22.	Ian K. Loring c/o Bain Capital Investors, LLC	U.S.	Manager	0	0
23.	Blair E. Hendrix c/o Bain Capital Investors, LLC	U.S.	Manager	0	0
24.	Richard J. Bressler	U.S.	CFO, President, Manager	0	0
25.	James C. Carlisle	U.S.	Manager	0	0
26.	Julia B. Donnelly	U.S.	Manager	0	0
27.	Scott M. Sperling	U.S.	Manager	0	0

	(1)	(2)	(3)	(4)	(5)
28.	David C. Abrams c/o Joseph F. Mazzella 200 Clarendon St., 59 th Floor Boston, MA 02116	U.S.	Manager	0	0
29.	Jonathon S. Jacobson c/o Joseph F. Mazzella 200 Clarendon St., 59 th Floor Boston, MA 02116	U.S.	Manager	0	0
30.	iHeartMedia, Inc.	U.S.	Sole Member	100	100

iHeartMedia, Inc., the sole member of iHeartMedia Capital II, LLC, has the following officers and directors, all of which use the address 2625 S. Memorial Drive, Tulsa, OK 74129, unless otherwise indicated:

	(1)	(2)	(3)	(4)	(5)
1.	iHeartMedia, Inc.	U.S.	--	--	--
2.	Mark P. Mays	U.S.	Director	1.2	1.2
3.	Robert H. Walls, Jr.	U.S.	EVP, General Counsel, Secretary	<1	<1
4.	Scott D. Hamilton	U.S.	SVP, CAO, Assistant Secretary	<1	<1
5.	Jessica Marventano	U.S.	SVP-Government Affairs	<1	<1
6.	William B. Feehan	U.S.	SVP-Human Resources	<1	<1
7.	Brian D. Coleman	U.S.	SVP, Treasurer	<1	<1
8.	Effie Epstein	U.S.	VP, Planning and Investor Relations	<1	<1
9.	Scott T. Bick	U.S.	SVP-Tax	<1	<1
10.	Hamlet T. Newsom, Jr.	U.S.	VP, Associate General Counsel, Assistant Secretary	<1	<1
11.	David Rokosky	U.S.	VP-Procurement	<1	<1
12.	Gayle Troberman	U.S.	EVP and Chief Marketing Officer	<1	<1
13.	Juliana F. Hill	U.S.	SVP-Liquidity & Asset Management	<1	<1
14.	Steven Cutler	U.S.	EVP-Business Development & Corporate Strategy	<1	<1
15.	C. William Ecclesshare	U.K.	CEO-Outdoor	<1	<1
16.	Peter Gerrald	U.S.	SVP-CIO	<1	<1
17.	Wendy Goldberg	U.S.	EVP-Communications	<1	<1
18.	Richard J. Bressler	U.S.	President, CFO, Director	1.0	1.0
19.	Robert W. Pittman	U.S.	Chairman, CEO, Director	1.7	1.7
20.	Duaine Smith	U.S.	SVP, General Auditor	<1	<1
21.	Steven Macri	U.S.	SVP, Corporate Finance	<1	<1
22.	Irving L. Azoff	U.S.	Director	0	0
23.	Julia B. Donnelly	U.S.	Director	0	0
24.	John P. Connaughton	U.S.	Director	0	0
25.	Ian K. Loring	U.S.	Director	0	0
26.	Blair E. Hendrix	U.S.	Director	0	0

	(1)	(2)	(3)	(4)	(5)
27.	James C. Carlisle	U.S.	Director	0	0
28.	Matthew J. Freeman	U.S.	Director	0	0
29.	Scott M. Sperling	U.S.	Director	0	0
30.	David C. Abrams	U.S.	Director	7.8	7.8
31.	Jonathon S. Jacobson	U.S.	Director	11.3	11.3
32.	Clear Channel Capital IV, LLC ³	U.S.	Majority Shareholder	67.7	67.7 ⁴

Clear Channel Capital IV, LLC, which holds 67.7% of the voting stock of iHeartMedia, Inc., has the following officers, managers and controlling entities:

	(1)	(2)	(3)	(4) ⁵	(5)
1.	Clear Channel Capital IV, LLC	U.S.	--	--	--
2.	Steven W. Barnes	U.S.	Manager	0	0
3.	John P. Connaughton	U.S.	Co-Chair of Board of Managers, Co-President, Secretary	0	0
4.	Ian K. Loring	U.S.	VP, Assistant Secretary, Manager	0	0
5.	Blair E. Hendrix	U.S.	VP, Assistant Treasurer, Manager	0	0
6.	Julia B. Donnelly	U.S.	Manager	0	0
7.	Daniel C. Jones	U.S.	Manager	0	0
8.	James C. Carlisle	U.S.	VP, Assistant Treasurer, Manager	0	0
9.	Scott M. Sperling	U.S.	Co-Chair of Board of Managers, Co-President, Treasurer	0	0
10.	Bain Capital (CC) IX, L.P. c/o Bain Capital Investors, LLC	U.S.	Member	50	50

³ iHeartMedia, Inc. ("IHM") has a board of directors composed of 13 members. Clear Channel Capital IV, LLC (which can be reached at c/o Bain Capital Partners, LLC, John Hancock Tower, 200 Clarendon Street, Boston, Massachusetts 02116 and c/o Thomas H. Lee Partners, L.P., 100 Federal Street, Boston, Massachusetts 02110) owns all of the outstanding Class B Common Stock of IHM and has the voting power to determine 11 members of the CCMH board of directors, or 84.6% of the IHM board. The remaining two members of the board of directors, or 15.4%, are elected by IHM's public stockholders.

⁴ Affiliates and associated investors of Bain and Lee beneficially own a majority of the equity interest in IHM in the form of non-voting, non-attributable stock.

⁵ Each manager has one vote, with half the managers appointed by Bain and half by Lee. Any action by the board of managers requires a majority vote of those managers present, with at least one vote from a Bain representative and one vote from a Lee representative.

	(1)	(2)	(3)	(4) ⁵	(5)
11.	Thomas H. Lee Equity Fund VI, L.P.	U.S.	Member	50	50

Bain Capital (CC) IX, L.P., which has a 50% interest in Clear Channel Capital IV, LLC, is controlled as follows:

	(1)	(2)	(3)	(4)	(5)
1.	Bain Capital (CC) IX, L.P.	U.S.	--	--	--
2.	Bain Capital Partners (CC) IX, L.P. c/o Bain Capital Investors, LLC	U.S.	General Partner	100	<1
3.	Insulated Limited Partners	--	Insulated Limited Partners	0	>99

Bain Capital Partners (CC) IX, L.P., which controls Bain Capital (CC) IX, L.P., is controlled as follows:

	(1)	(2)	(3)	(4)	(5)
1.	Bain Capital Partners (CC) IX, L.P.	U.S.	--	--	--
2.	Bain Capital Investors, LLC c/o Bain Capital Investors, LLC	U.S.	General Partner	100	<1
3.	Limited Partners	--	Limited Partners ⁶	0	>99

Bain Capital Investors, LLC, which controls Bain Capital Partners (CC) IX, L.P. is controlled as follows:

	(1)	(2)	(3)	(4) ⁷	(5)
1.	Bain Capital Investors, LLC	U.S.	--	--	--
2.	Steven W. Barnes c/o Bain Capital Investors, LLC	U.S.	Managing Director, Member	9.09	<10
3.	Joshua Bekenstein c/o Bain Capital Investors, LLC	U.S.	Managing Director, Member	9.09	<10
4.	John P. Connaughton c/o Bain Capital Investors, LLC	U.S.	Managing Director, Member	9.09	<10
5.	Paul B. Edgerley c/o Bain Capital Investors, LLC	U.S.	Managing Director, Member	9.09	<10
6.	Spencer J. Hitch c/o Bain Capital Investors, LLC	U.S.	Managing Director, Member	9.09	<10
7.	Matthew S. Levin c/o Bain Capital Investors, LLC	U.S.	Managing Director, Member	9.09	<10

⁶ The limited partners of Bain Capital Partners (CC) IX, L.P. are individuals identified as managing directors or members of Bain Capital Investors, LLC, related entities such as family trusts established by such individuals, and investment funds created for the benefit of employees of affiliates of Bain Capital Investors, LLC.

⁷ Investment and disposition decisions by Bain Capital Investors, LLC are made by a majority vote of the 11 members, each of whom has a single vote, which equates currently to a voting interest with respect to such investment or disposition decisions of approximately 9.09% of the total vote. In the aggregate, these members own 100% of the ownership interests in the limited liability company.

	(1)	(2)	(3)	(4)'	(5)
8.	Ian K. Loring c/o Bain Capital Investors, LLC	U.S.	Managing Director, Member	9.09	<10
9.	Philip H. Loughlin, IV c/o Bain Capital Investors, LLC	U.S.	Managing Director, Member	9.09	<10
10.	Stephen G. Pagliuca c/o Bain Capital Investors, LLC	U.S.	Managing Director, Member	9.09	<10
11.	Stephen M. Zide c/o Bain Capital Investors, LLC	U.S.	Managing Director, Member	9.09	<10
12.	Michael D. Ward c/o Bain Capital Investors, LLC	U.S.	Managing Director, Member	9.09	<10

Thomas H. Lee Equity Fund VI, L.P., which holds a 50% interest in Clear Channel Capital IV, LLC, is controlled as follows:

	(1) ⁸	(2)	(3)	(4)	(5)
1.	Thomas H. Lee Equity Fund VI, L.P.	U.S.	--	--	--
2.	THL Equity Advisors VI, LLC	U.S.	General Partner	100	<1
3.	Insulated Limited Partners	U.S.	Insulated Limited Partners	0	>99

THL Equity Advisors VI, LLC, which controls Thomas H. Lee Equity Fund VI, L.P., is controlled as follows:

	(1)	(2)	(3)	(4)	(5)
1.	THL Equity Advisors VI, LLC	U.S.	--	--	--
2.	Thomas H. Lee Partners, L.P.	U.S.	Sole Member	100	100

⁸ The address for each person or entity listed in column 1 of each of the charts below, other than the insulated limited partners or members, is c/o Thomas H. Lee Partners, L.P. 100 Federal Street Boston, MA 02110.

Thomas H. Lee Partners, L.P., which controls THL Equity Advisors VI, LLC, is controlled as follows:

	(1)	(2)	(3) ⁹	(4)	(5)
1.	Thomas H. Lee Partners, L.P.	U.S.	--	--	--
2.	Thomas H. Lee Advisors, LLC	U.S.	General Partner	100	<1
3.	Todd M. Abbrecht	U.S.	Limited Partner	0	<10
4.	Charles A. Brizius	U.S.	Limited Partner	0	<10
5.	Anthony J. DiNovi	U.S.	Limited Partner	0	<10
6.	Thomas M. Hagerty	U.S.	Limited Partner	0	<10
7.	Scott L. Jaeckel	U.S.	Limited Partner	0	<10
8.	Seth W. Lawry	U.S.	Limited Partner	0	<10
9.	Soren L. Oberg	U.S.	Limited Partner	0	<10
10.	Scott M. Sperling	U.S.	Limited Partner	0	<10
11.	Kent R. Weldon	U.S.	Limited Partner	0	<10
12.	Alex J. Alexandrov	U.S.	Limited Partner	0	<10
13.	Mark Benaquista	U.S.	Limited Partner	0	<10
14.	Beverly A. Berman	U.S.	Limited Partner	0	<10
15.	Michael P. Borom	U.S.	Limited Partner	0	<10
16.	Julia B. Donnelly	U.S.	Limited Partner	0	<10
17.	Joshua D. Bresler	U.S.	Limited Partner	0	<10
18.	Richard J. Bressler	U.S.	Limited Partner	0	<10
19.	James C. Carlisle	U.S.	Limited Partner	0	<10
20.	Margaret W. Covell	U.S.	Limited Partner	0	<10
21.	Alexandra L. DeLaite	U.S.	Limited Partner	0	<10
22.	Laura A. Grattan	U.S.	Limited Partner	0	<10
23.	Douglas A. Haber	U.S.	Limited Partner	0	<10
24.	Jesse Hermann	U.S.	Limited Partner	0	<10
25.	Charles P. Holden	U.S.	Limited Partner	0	<10
26.	Daniel G. Jones	U.S.	Limited Partner	0	<10
27.	Uttam Kumbhat	U.S.	Limited Partner	0	<10
28.	James D. Martin	U.S.	Limited Partner	0	<10
29.	Pericles G. Mazarakis	U.S.	Limited Partner	0	<10
30.	Joshua M. Nelson	U.S.	Limited Partner	0	<10
31.	Joseph F. Pesce	U.S.	Limited Partner	0	<10
32.	Ganesh B. Rao	U.S.	Limited Partner	0	<10
33.	Stephanie S. Stamatatos	U.S.	Limited Partner	0	<10
34.	Jeff T. Swenson	U.S.	Limited Partner	0	<10
35.	Gregory A. White	U.S.	Limited Partner	0	<10
36.	Shari H. Wolkon	U.S.	Limited Partner	0	<10
37.	Erik J. Zimmer	U.S.	Limited Partner	0	<10
38.	John McClellan	U.S.	Limited Partner	0	<10
39.	Vivek Sharma	U.S.	Limited Partner	0	<10
40.	Scott A. Schoen	U.S.	Limited Partner	0	<10
41.	George R. Taylor	U.S.	Limited Partner	0	<10
42.	Justin Roberts	U.S.	Limited Partner	0	<10
43.	Megan Melican	U.S.	Limited Partner	0	<10
44.	Douglas H. Vandenberg	U.S.	Limited Partner	0	<10

⁹ The limited partners of Thomas H. Lee Partners, L.P. also include trusts or family limited partnerships established as estate planning vehicles by individuals who are listed in the table as limited partners of this entity.

	(1)	(2)	(3) ⁹	(4)	(5)
45.	C. Hunter Boll	U.S.	Limited Partner (*) ¹⁰	0	<10
46.	David V. Harkins	U.S.	Limited Partner (*)	0	<10
47.	Thomas H. Lee	U.S.	Limited Partner (*)	0	<10
48.	Warren C. Smith, Jr.	U.S.	Limited Partner (*)	0	<10
49.	Insulated Limited Partners	--	Insulated Limited Partners	0	<26

Thomas H. Lee Advisors, LLC, which controls Thomas H. Lee Partners, L.P., is controlled as follows:

	(1)	(2)	(3)	(4) ¹¹	(5)
1.	Thomas H. Lee Advisors, LLC	U.S.	--	--	--
2.	THL Holdco, LLC	U.S.	Managing Member	100	<10
3.	Todd M. Abbrecht	U.S.	Member	0	<10
4.	Charles A. Brizius	U.S.	Member	0	<10
5.	Anthony J. DiNovi	U.S.	Member	0	<10
6.	Thomas M. Hagerty	U.S.	Member	0	<10
7.	Scott A. Jaeckel	U.S.	Member	0	<10
8.	Seth W. Lawry	U.S.	Member	0	<10
9.	Soren L. Oberg	U.S.	Member	0	<10
10.	Scott M. Sperling	U.S.	Member	0	<10
11.	Kent R. Weldon	U.S.	Member	0	<10
12.	Alex J. Alexandrov	U.S.	Member	0	<10
13.	Mark Benaquista	U.S.	Member	0	<10
14.	Beverly A. Berman	U.S.	Member	0	<10
15.	Michael P. Borom	U.S.	Member	0	<10
16.	Julia B. Donnelly	U.S.	Member	0	<10
17.	Joshua D. Bresler	U.S.	Member	0	<10
18.	Richard J. Bressler	U.S.	Member	0	<10
19.	James C. Carlisle	U.S.	Member	0	<10
20.	Margaret W. Covell	U.S.	Member	0	<10
21.	Alexandra L. DeLaite	U.S.	Member	0	<10
22.	Laura A. Grattan	U.S.	Member	0	<10
23.	Douglas A. Haber	U.S.	Member	0	<10
24.	Jesse Hermann	U.S.	Member	0	<10
25.	Charles P. Holden	U.S.	Member	0	<10
26.	Daniel G. Jones	U.S.	Member	0	<10
27.	Uttam Kumbhat	U.S.	Member	0	<10
28.	James D. Martin	U.S.	Member	0	<10
29.	Pericles G. Mazarakis	U.S.	Member	0	<10
30.	Joshua M. Nelson	U.S.	Member	0	<10
31.	Joseph F. Pesce	U.S.	Member	0	<10
32.	Ganesh B. Rao	U.S.	Member	0	<10

¹⁰ The Limited Partners denoted by (*) do not participate in the investments of Thomas H. Lee Equity Fund VI, L.P., the entity that holds a 50% interest in Clear Channel Capital IV, LLC, through their interest in Thomas H. Lee Partners, L.P.

¹¹ The members of Thomas H. Lee Advisors, LLC also include trusts and family limited partnerships established as estate planning vehicles of individuals who are members of Thomas H. Lee Advisors, LLC.

	(1)	(2)	(3)	(4) 11	(5)
33.	Stephanie S. Stamatou	U.S.	Member	0	<10
34.	Jeff T. Swenson	U.S.	Member	0	<10
35.	Gregory A. White	U.S.	Member	0	<10
36.	Shari H. Wolkon	U.S.	Member	0	<10
37.	Erik J. Zimmer	U.S.	Member	0	<10
38.	John McClellan	U.S.	Member	0	<10
39.	Vivek Sharma	U.S.	Member	0	<10
40.	Scott A. Schoen	U.S.	Member	0	<10
41.	George R. Taylor	U.S.	Member	0	<10
42.	Justin Roberts	U.S.	Member	0	<10
43.	Megan Melican	U.S.	Member	0	<10
44.	Douglas H. Vandenberg	U.S.	Member	0	<10
45.	C. Hunter Boll	U.S.	Member (*) ¹²	0	0
46.	David V. Harkins	U.S.	Member (*)	0	0
47.	Thomas H. Lee	U.S.	Member (*)	0	0
48.	Warren C. Smith, Jr.	U.S.	Member (*)	0	0
49.	Insulated Members	--	Members	0	<26

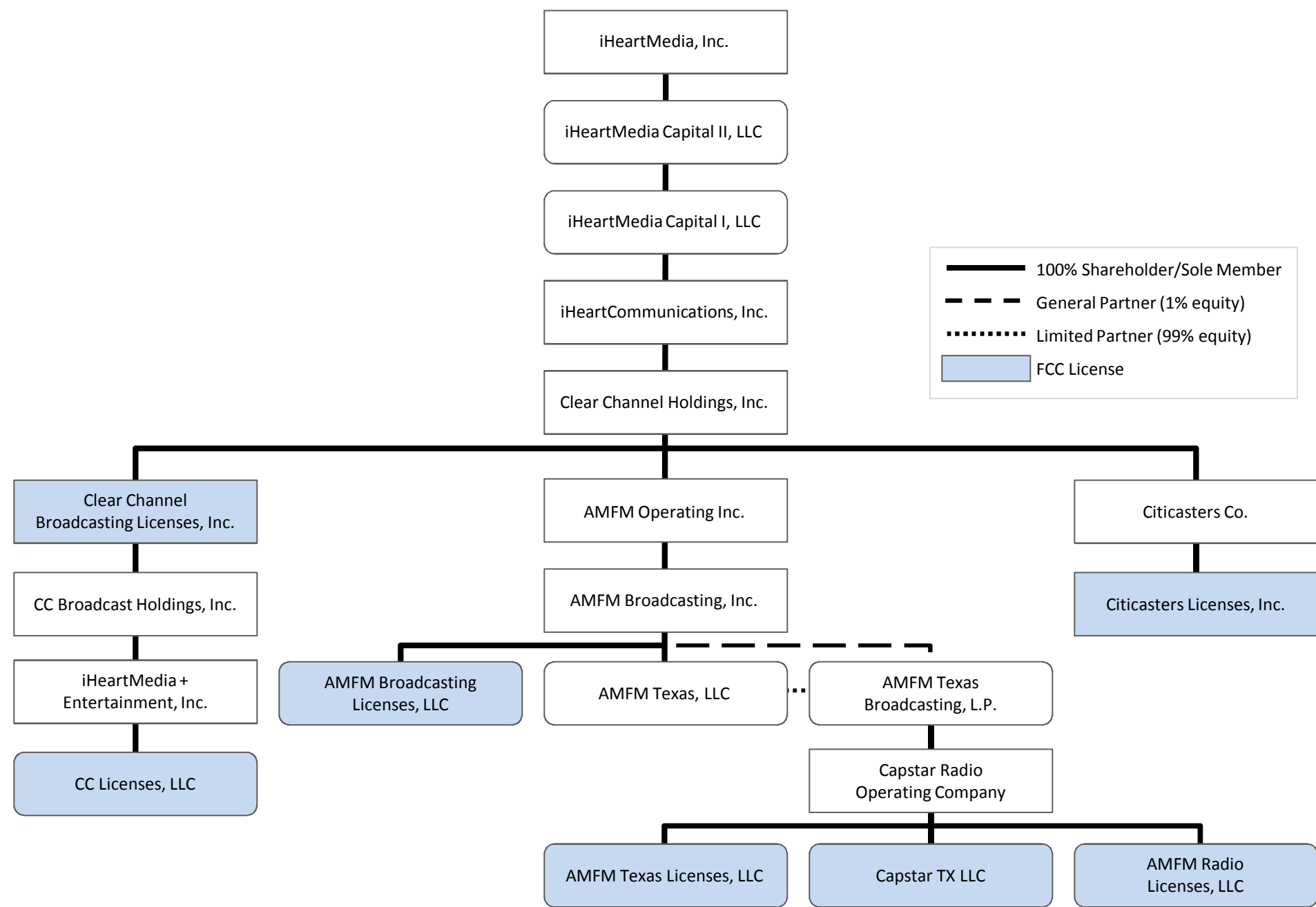
THL Holdco, LLC, which controls Thomas H. Lee Advisors, LLC, is controlled as follows:

	(1)	(2)	(3)	(4)	(5)
1.	THL Holdco, LLC	U.S.	--	--	--
2.	Todd M. Abbrecht	U.S.	Member	0	<20
3.	Anthony J. DiNovi	U.S.	Member	50	<20
4.	Thomas M. Hagerty	U.S.	Member	0	<20
5.	Seth W. Lawry	U.S.	Member	0	<20
6.	Soren L. Oberg	U.S.	Member	0	<20
7.	Scott M. Sperling	U.S.	Member	50	<20
8.	Kent R. Weldon	U.S.	Member	0	<20

¹² The Members denoted by (*) do not participate in the investments of Thomas H. Lee Equity Fund VI, L.P., the entity that holds a 50% interest in Clear Channel Capital IV, LLC, through their interest in Thomas H. Lee Advisors, LLC.

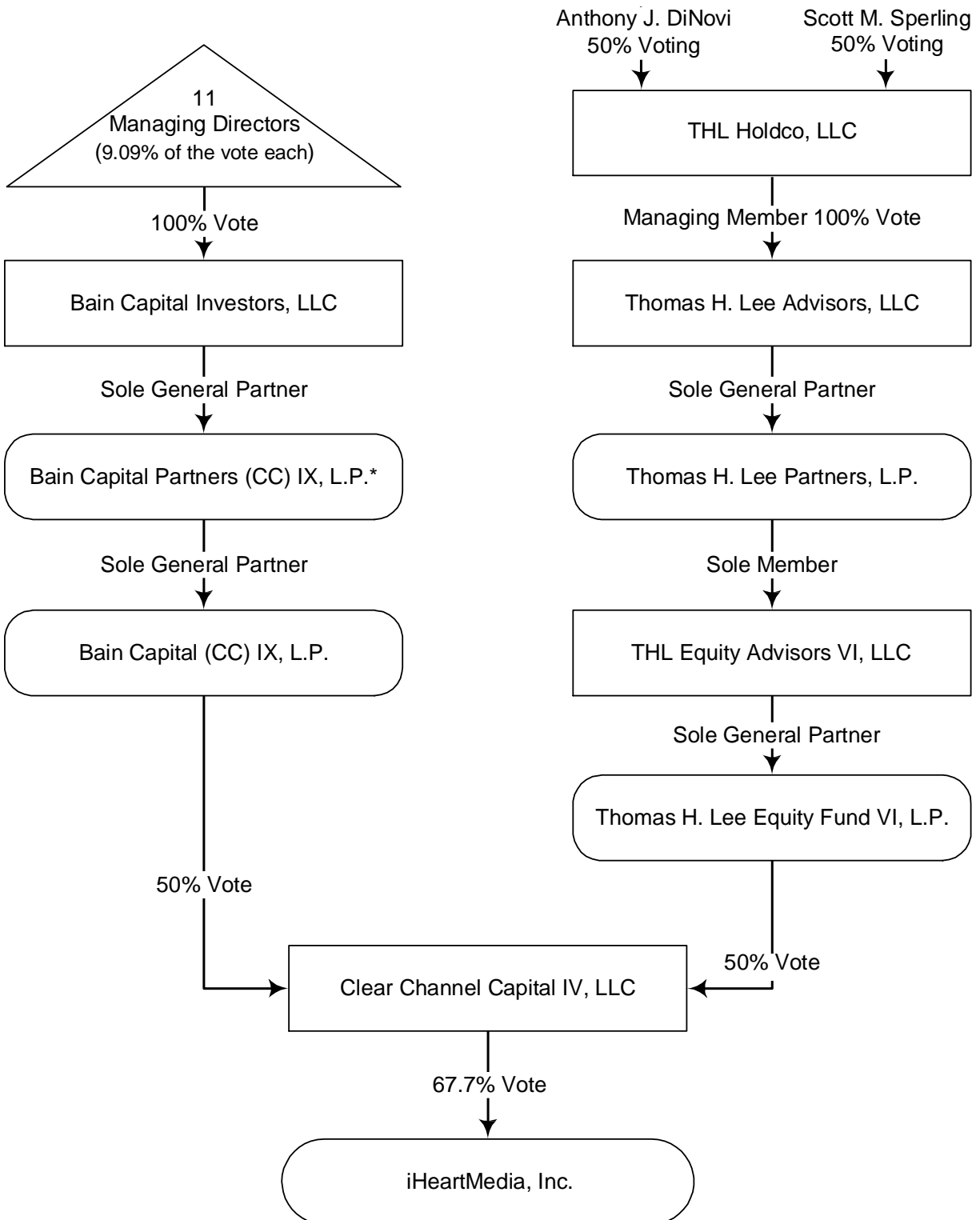
Figure 1

Ownership Structure



iHeartMedia, Inc.

Ownership Structure



*The limited partners of this entity are individuals identified as managing directors or members of Bain Capital Investors, LLC, related entities such as family trusts established by such individuals, and investment funds created for the benefit of employees of affiliates of Bain Capital Investors, LLC.