

Exhibit 12 – Interference Study

The 252D transmitter site is within the 60 dBu contour of upper second adjacent Channel of WJZT Woodville, FL Channel 250A and third lower adjacent Channel 255C1 of WBZE Tallahassee, FL.

The WJZT contour at the translator site is 63.75 dBu (F50,50). The WBZE contour at the 252D transmitter site is 134.5 dBu.

Using the FCC free space equation, the ratio of the 100:1 (translator to WJZT), predicted interference area extends 145 meters from the 252D antenna. The interfering contour, 103.75 dBu ($63.75 + 40$) extends 145 meters from the 252D antenna. The antenna is 165 meters above ground level, thus the interference area remains harmlessly 15 meters above the ground.

The predicted 170 dBu interference area to WBZE ($130 + 40$) extends 4 meters from the 252D antenna. The antenna is 165 meters above ground level, thus the interference area remains harmlessly 156 meters above the ground.

Because the antenna is 165 meters above ground level, the interference area will never reach the ground. Exhibit 12, Figures 1 and 2, consist of a topographic map, and an aerial photograph. These have been provided to show the proposed site and that there are no structures or elevated roadways within the maximum 145 meter interference area of the translator.

The population within the interfering contours is zero. Therefore, the application is in compliance with the following: §74.1204 (d) "The provisions of this section concerning prohibited overlap will not apply where the area of such overlap lies entirely over water. In addition, an application otherwise precluded by this section will be accepted if it can be demonstrated that no actual interference will occur due to intervening terrain, lack of population or such other factors as may be applicable."

Results -- FM and TV Propagation Curves Calculations

Free Space equation used, not curves

Results of Calculation

Distance to Contour = 0.145 km

ERP entered = 0.010 kW

HAAT entered = 195.94 meters

Field Strength entered = 103.700 dBu

Find the Distance to the Contour, Given a Field Strength

F(50,10) curves for interfering contours

FM and NTSC analog TV Channels 2 through 6

Results -- FM and TV Propagation Curves Calculations

Free Space equation used, not curves

Results of Calculation

Distance to Contour = 0.004 km

ERP entered = 0.010 kW

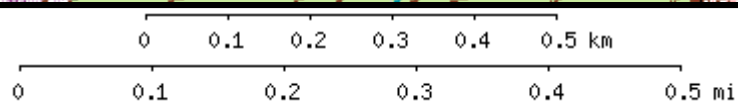
HAAT entered = 195.94 meters

Field Strength entered = 134.500 dBu

Find the Distance to the Contour, Given a Field Strength

F(50,10) curves for interfering contours

FM and NTSC analog TV Channels 2 through 6



Tallahassee quadrangle

Projection is UTM Zone 16 NAD83 Datum

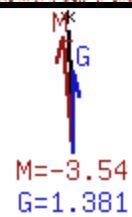
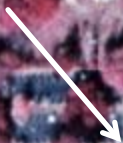


Figure 2

252D Site



0 0.07 0.14 0.21 0.28 0.35 km
0 0.05 0.1 0.15 0.2 0.25 mi

Map center is 30° 29' 15"N, 84° 16' 48"W (NAD27)
Tallahassee quadrangle - Elevation 208.7 ft / 63.6 m (USGS NED)
Projection is UTM Zone 16 NAD83 Datum

M*
G
M=-3.54
G=1.381