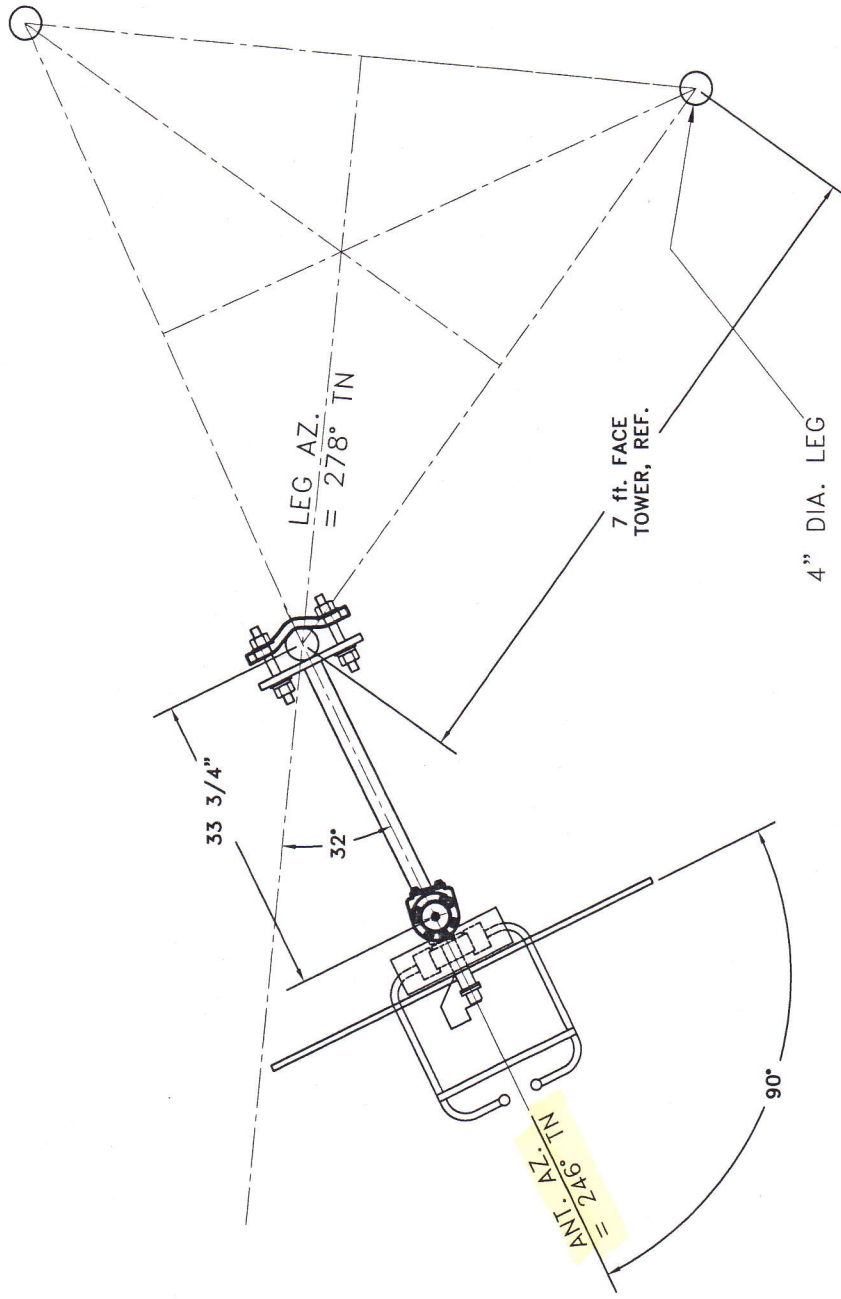
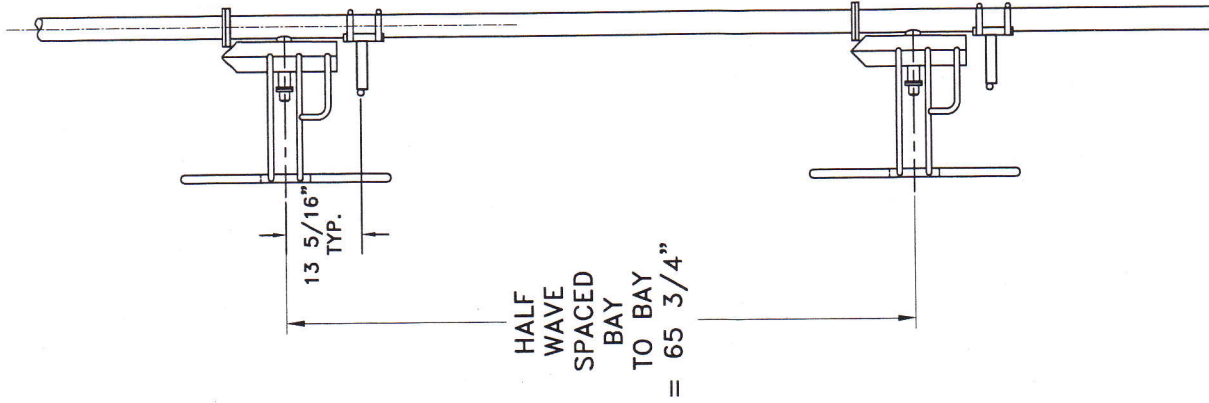
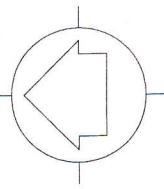


TRUE NORTH



SHIVELY LABS

A DIVISION OF HOWELL LABORATORIES INC., BRIDGTON, MAINE

SHOP ORDER	FREQUENCY	SCALE	DRAWN BY	APPROVED BY
30151	89.9	N.T.S.	ASP	DAB

TITLE: MODEL-6810-3D-SS-DIRECTIONAL ANTENNA

DATE: 10-4-12

SIDE VIEW

ANTENNA HEADING 246° TRUE NORTH

FIGURE 2

North Coast Surveying

1715 Melody Lane
Rhinelander, WI 54501
PH. 715-490-0892

10/02/12

Educational Communications Board
3319 West Beltline Highway
Madison, WI 53713-4296

Antenna Alignment Certification per FCC requirements

I, Charles L. Oleinik, registered land surveyor in the State of Wisconsin, hereby certify: That on September 26 2012, by the order of Dean Andrewjeski, I did align 3 bays of an FM antenna. The antenna is located on a tower at 6425 Thunder Lake Road, Township of Sugar Camp, Oneida County, Wisconsin. I aligned the antenna with a forward azimuth of 246 degrees based on True North.


Charles L. Oleinik, RLS

