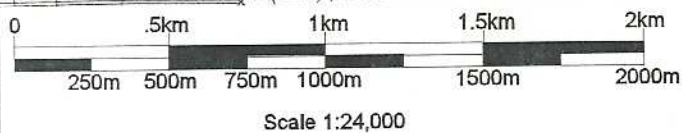
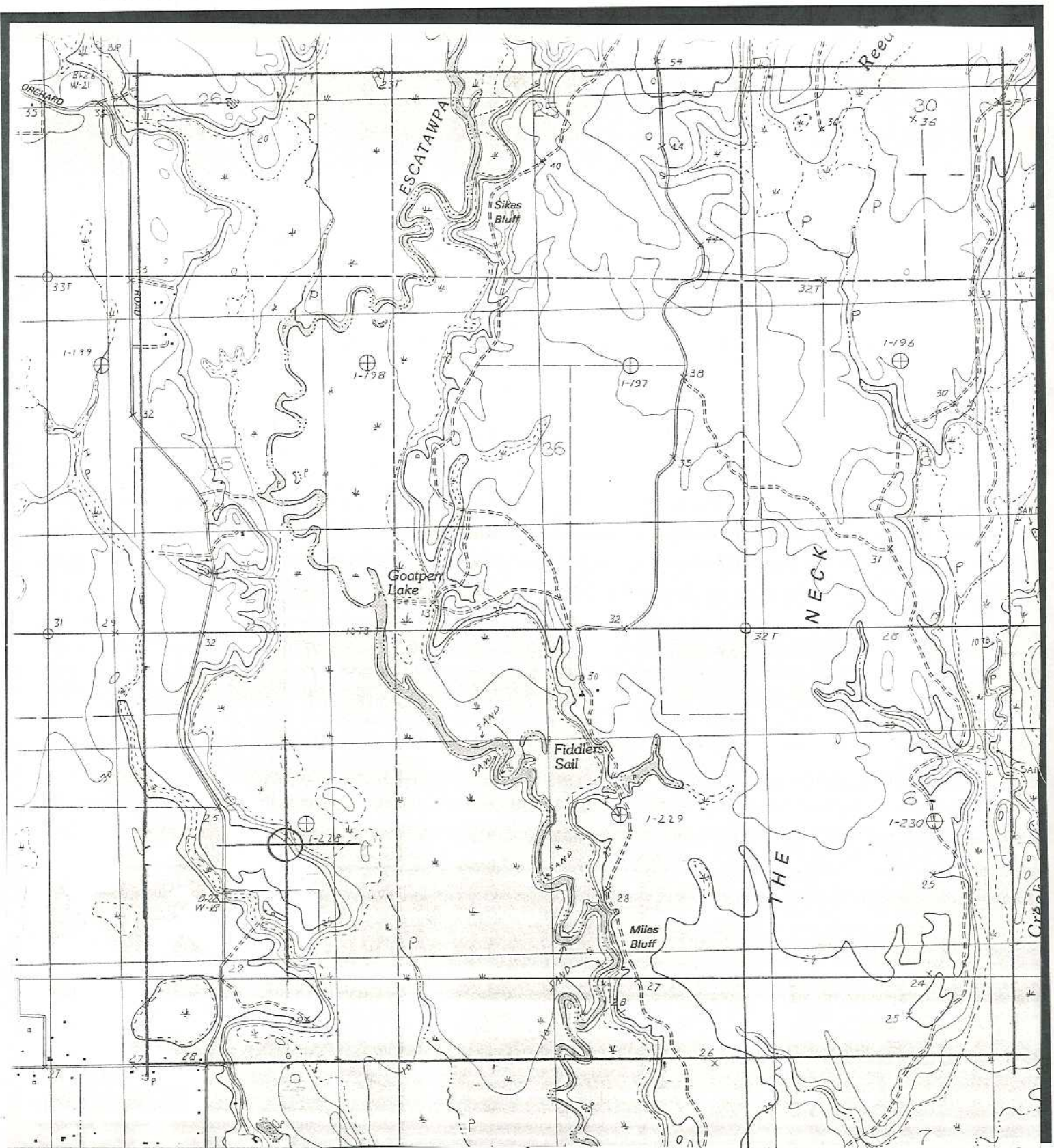


Exhibit 1

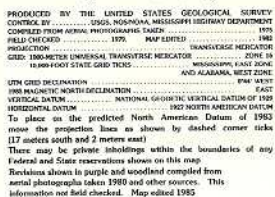
American Family
Association
September 2002

Proposed Site:
Pascagoula, MS

Site Coordinates:
Latitude: 30° 33' 03"
Longitude: 88° 27' 06"



Big Point Quadrangle
Mississippi-Alabama
7.5 Minute Series (Topographic)



PROVISIONAL MAP
Produced from original
manuscript drawings. Infor-
mation shown as of date of
field check.

SCALE 1:24 000

0 1 2 3 4 5 6 7 8 9 10 11 12 MILES

0 1000 2000 3000 4000 5000 6000 7000 8000 9000 10000 11000 12000 FEET

0 500 1000 1500 2000 METERS

CONTOUR INTERVAL 5 FEET

To convert feet to meters multiply by .3048

THIS MAP COMPLIES WITH NATIONAL MAP ACCURACY STANDARDS
FOR SALE BY U.S. GEOLOGICAL SURVEY, RESTON, VIRGINIA 22092



QUADRANGLE LOCATION

| | | | |
|---|---|---|--------------------|
| 1 | 2 | 3 | 1 Hensleyton |
| | | | 2 Huxley |
| | | | 3 Tanner Williams |
| 4 | | 5 | 4 Three Rivers |
| | | | 5 St. Elmo |
| | | | 6 Pascagoula North |
| 6 | 7 | 8 | 7 Keokuk |
| | | | 8 Grand Bay |

ADJOINING 3.5: CUBATRANGLE NAME:

ROAD LEGEND

Improved Road
Unimproved Road
Trail

☐ Interstate Route ☐ U. S. Route ☐ State Route

BIG POINT, MISS.-ALA.
PROVISIONAL EDITION 1982
PHOTOREVISED 1985
30086-F4-TF-024