

Compliance with C.F.R. 74.1204

The proposed FM Translator to operate on channel 252 is located within the protected 60dBu contour of second adjacent channel station WSKS, channel 250A, Whitesboro, NY. According to 74.1204(a)(3), in order to protect second and third adjacent facilities, the difference in dBu between the two facilities must not exceed 40dBu.

The proposed ERP for W252DO.P:	250 watts
The proposed COR for W252DO.P:	76 meters
WSKS F(50/50) contour at proposed site:	66.0dBu
The F(50/10) contour of proposed W252DO.P:	106.0dBu

The predicted distance to the 106.0dbu interfering contour is 556 meters. Exhibit 13-A1 demonstrates the distances to the interfering contour by taking into account the vertical elevation pattern of the Nicom BKG77 3 bay .85 wave spaced antenna. It has been determined that the interfering contour of 106.0dbu does not extend to any regularly occupied structures.

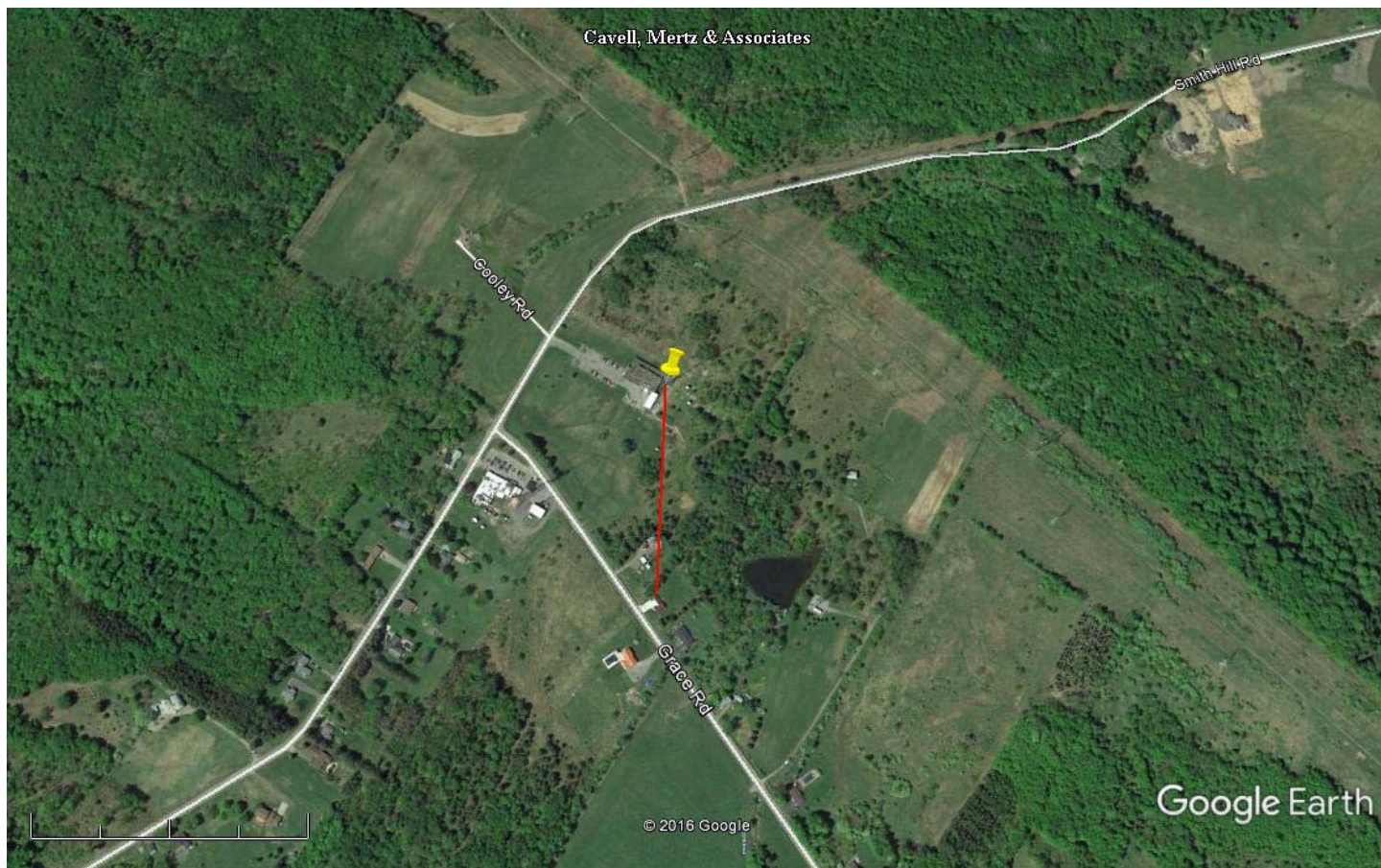
As seen in exhibit 13-A2, the red marker demonstrates the distance of 228 meters in the direction of the nearest occupied structure. As seen in exhibit 13-A1, the interference falls short of the ground at all distances greater than 150 meters from the antenna. An examination of all other nearby buildings within this 150 meter distance has determined that they are unoccupied transmitter buildings which sit at the base of several towers on this hill. Therefore no population will be affected as a result of this proposed modification.

Digital Radio Broadcasting respectfully requests a waiver of C.F.R. 74.1204 based on no population within the area of predicted interference.

EXHIBIT 13 - A1
74.1204(d) Showing
W252DO
Utica, NY

ERP (kw): 0.25
Height of Antenna above Ground (m): 76
Translator's IX Contour: 106
Antenna Type: Nicom BKG77-3/.85

<u>Depression Angle from Horizon</u>	<u>Antenna Relative Field</u>	<u>ERP (kw) from the Antenna RF</u>	<u>Dist. To IX Contour (m)</u>	<u>Height IX Contour Above Ground (m)</u>
0	1.000	0.2500	555.8659	76.000
5	0.913	0.2084	507.5055	31.768
10	0.678	0.1149	376.8771	10.556
15	0.357	0.0319	198.4441	24.639
20	0.049	0.0006	27.2374	66.684
25	0.171	0.0073	95.0531	35.829
30	0.270	0.0182	150.0838	0.958
35	0.250	0.0156	138.9665	-3.708
40	0.148	0.0055	82.2681	23.119
45	0.015	0.0001	8.3380	70.104
50	0.107	0.0029	59.4776	30.437
55	0.194	0.0094	107.8380	-12.336
60	0.238	0.0142	132.2961	-38.572
65	0.244	0.0149	135.6313	-46.924
70	0.220	0.0121	122.2905	-38.915
75	0.185	0.0086	102.8352	-23.331
80	0.145	0.0053	80.6006	-3.376
85	0.119	0.0035	66.1480	10.104
90	0.114	0.0032	63.3687	12.631



Google Earth

feet 2000
meters 700



Yellow Pin Marker

NAD27

43-08-40.8 N 75-10-33.6 W

Red Line Marker: 228m at 182 degrees true north - the distance and direction to the nearest potentially occupied structure.