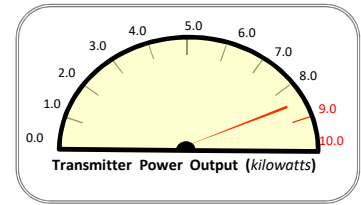


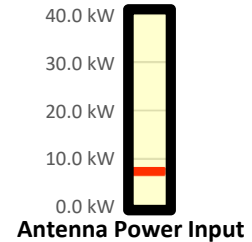
Transmitter Power Output Worksheet

Call letters: WVSC (FM) .C
City of License: Port Royal, SC
Channel: CH276C3 (103.1 MHz)
File No: BPH-20170825AAM
Facility ID: 49910
Applicant: Saga Quad States Communications, LLC



Effective Radiated Power (ERP): 6.900 kW

Antenna Make: Dielectric®, Inc. (DIE)
Antenna Model: DCR-M2
No of Elements: Two (2)
Antenna COR AGL: 145 meters AGL
Antenna COR AMSL: 151 meters AMSL
Max Input Power: 36.00 kW



Power Gain: 1.0

Antenna Gain: 0.000 dBd

Calculated Antenna Input Power: 6.900 kW

Transmitter Rated Power: 10.000 kW

Transmitter Make/Model: Nautel GV10

Power Gain to Antenna gain (dBd) Conversion:
 $=\text{Log}[\text{power gain}] * 10$

Inventory of System / Insertion Losses

Explanation	Component Make/Model	Length	Loss
Typical Flange Connector	Generic (1@0.02 dB each)	n/a	-0.020 dBd
3" Air Feedline (Tower)	Cablewave HCA300-50J (0.133 dB/100 ft)	480 ft	-0.638 dBd
3 1/8" Gas Barrier Flange	Cablewave #738350 3 1/8" EIA	n/a	-0.020 dBd
3 1/8 Inch Elbow	Myat Part No. 301-025	n/a	-0.020 dBd
Lightning Protection	Polyphasor IS-318E	n/a	-0.100 dBd
Typical Flange Connector	Generic (1@0.02 dB each)	n/a	-0.020 dBd
Manual Transfer Switch	Dielectric Series DC 385-4xx (or equivalent)	n/a	-0.100 dBd
Typical Flange Connector	Generic (1@0.02 dB each)	n/a	-0.020 dBd
3 1/8 Inch Elbow	Myat Part No. 301-025	n/a	-0.020 dBd
3 1/8 Inch Elbow	Part No. EIA318EL (or equivalent)	n/a	-0.020 dBd
3 1/8 Inch Hardline	Myat Part No. 301-004 (0.094 dB/100 ft)	10 ft	-0.009 dBd
3 1/8 Inch Elbow	Myat Part No. 301-025	n/a	-0.020 dBd
3 1/8 Inch Hardline	Myat Part No. 301-004 (0.094 dB/100 ft)	15 ft	-0.014 dBd
3 1/8 Inch Elbow	Myat Part No. 301-025	n/a	-0.020 dBd
3 1/8 Inch Hardline	Myat Part No. 301-004 (0.094 dB/100 ft)	11 ft	-0.010 dBd
Typical Flange Connector	Generic (1@0.02 dB each)	n/a	-0.020 dBd

TOTAL SYSTEM GAIN/LOSS: -1.07 dBd

CALCULATED TRANSMITTER POWER OUTPUT: 8.833 kW

$(1 / [10^{(dB/10)/ERP}])$