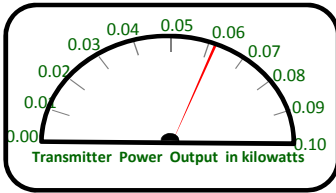
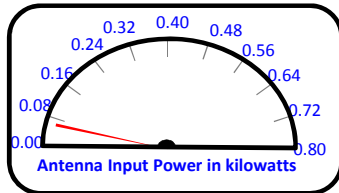


TPO Calculation Summary

Main Antenna Operation

Call letters: **KJSA(FM)-STA**
 City of License: **Jonesboro, AR**
 Frequency: **CH209C3 (89.7 MHz)**
 File No: **STA Pending**
 Facility ID: **176248**
 Applicant: **Jonesboro Seventh Day Adventist Church**



Operating Effective Radiated Power (ERP): **0.025 kW**

Antenna Make: **R.V.R.**

Antenna Model: **ACPO-1**

No of Elements: **One (1)**

Antenna COR AGL: **14.6 meters AGL**

Antenna COR AMSL: **110.0 meters AMSL**

Max Input Power: **0.8 kW**

Power Gain: **0.46**

$\text{Log}[\text{power gain}] * 10 = \text{Antenna Gain: } -3.372 \text{ dB}$

Calculated Antenna Input Power: **0.054 kW**

Transmitter Make/Model: **T.B.D.**

Transmitter Rated Power: **0.1 kW**

System Loss Info:

<u>Description</u>	<u>Component Make/Model</u>	<u>Length</u>	<u>Loss</u>
1/2 Inch End Connector	Generic (1 @0.02 dB each)		-0.020 dB
Main Antenna Feedline (Tower)	Andrew 1/2" LDF4-50A (Foam)	(0.625 dB/100 ft) 100 ft	-0.625 dB
1/2 Inch End Connector	Generic (1 @0.02 dB each)		-0.020 dB

TOTAL SYSTEM GAIN/LOSS: **-4.037 dB**

$1 / [10^{(-4.037/10)}] = \text{CALCULATED TRANSMITTER POWER OUTPUT: } 0.063 \text{ kW}$