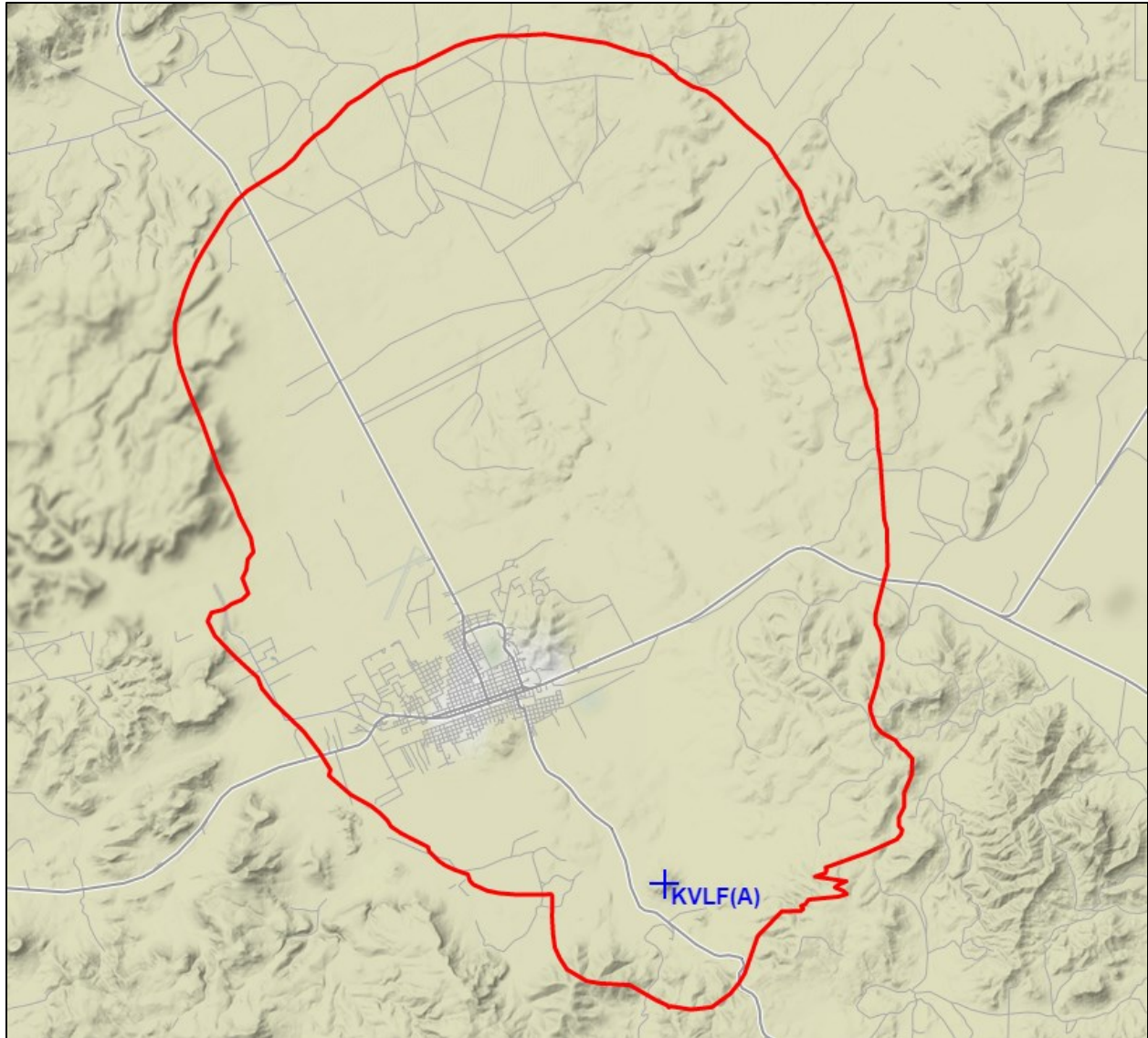




REC Networks
11541 Riverton Wharf Rd.
Mardela Springs, MD 21837
844.REC.LPFM/202.621.2355
recnet.com

New cross-service FM translator for **KVLF**
ALPINE, TX
ALPINE RADIO, LLC

PROPOSED 60dBu F(50,50) SERVICE CONTOUR



ALPINE, TX – Channel 254D (98.7 MHz) ~ ERP 0.250 kW ~ CA5-FM/CP/RM Rot: 339
Elev: 1579 meters ~ RCAGL: 12 meters ~ RCAMSL: 1591 meters ~ HAAT: 96
Overall tower height: 24 meters – ASR: None (no airports within 5 miles)
NAD27 Latitude: 30° 19' 08.4" NL – Longitude: 103° 37' 04.8" WL
NAD83 Latitude: 30° 19' 09.0" NL – Longitude: 103° 37' 06.5" WL

Site: KVL(A)
 Coordinates: 30-19-08.4 N, 103-37-04.8 W
 Freq: 98.70000 MHz
 ERP: 250.00 W

60 dBu protected contour. Bearings within 125km of Mexico shown in BLUE.

Bearing	ERP W	HAAT	DH	Distance	Lat	Lon
0	181.05	260	330	19.46	30.494041	-103.618000
5	150.93	254	360	18.36	30.483544	-103.601295
10	122.15	244	300	17.01	30.469641	-103.587181
15	91.20	231	210	15.27	30.451667	-103.576762
20	64.52	213	230	13.46	30.432789	-103.569963
25	41.62	208	250	11.98	30.416680	-103.565176
30	24.81	197	280	10.32	30.399360	-103.564202
35	15.01	199	270	9.14	30.386308	-103.563356
40	8.46	197	300	7.81	30.372774	-103.565690
45	6.08	199	240	7.18	30.364661	-103.565068
50	4.49	185	190	6.41	30.356073	-103.566785
55	4.76	172	160	6.30	30.351511	-103.564176
60	5.11	177	160	6.51	30.348259	-103.559248
65	5.70	166	130	6.49	30.343671	-103.556660
70	6.32	133	200	5.97	30.337362	-103.559507
75	7.31	114	230	5.78	30.332450	-103.559789
80	8.19	89	290	5.24	30.327170	-103.564247
85	8.46	63	310	4.46	30.322487	-103.571725
90	8.56	61	290	4.40	30.318992	-103.572112
95	7.83	53	320	3.99	30.315866	-103.576596
100	6.97	45	280	3.57	30.313414	-103.581339
105	5.78	26	250	2.79	30.312497	-103.589902
110	4.76	8	350	2.68	30.310753	-103.591762
115	4.16	-25	420	2.60	30.309103	-103.593422
120	3.84	-55	540	2.56	30.307499	-103.594929
125	4.22	-79	600	2.61	30.305523	-103.595709
130	4.69	-105	650	2.67	30.303550	-103.596676
135	5.62	-87	590	2.78	30.301337	-103.597544
140	6.56	-62	620	2.87	30.299258	-103.598815
145	7.48	-32	610	2.94	30.297330	-103.600427
150	8.37	-7	500	3.01	30.295561	-103.602328
155	8.84	4	240	3.06	30.294096	-103.604551
160	9.12	9	270	3.08	30.292942	-103.607016
165	8.65	8	510	3.04	30.292614	-103.609812
170	8.01	12	320	2.98	30.292595	-103.612608
175	7.06	25	330	2.91	30.292953	-103.615361
180	6.16	29	340	2.83	30.293555	-103.618000
185	5.26	22	370	2.74	30.294467	-103.620486
190	4.42	18	370	2.64	30.295633	-103.622772
195	4.03	-5	400	2.58	30.296541	-103.624970
200	3.84	-19	430	2.56	30.297388	-103.627110
205	4.42	-18	380	2.64	30.297495	-103.629614
210	5.11	-10	270	2.72	30.297804	-103.632173
215	6.24	-53	250	2.84	30.298096	-103.634951
220	7.40	-47	170	2.94	30.298776	-103.637653
225	8.10	-33	240	2.99	30.300001	-103.640003
230	8.65	-31	300	3.04	30.301439	-103.642236
235	8.37	-36	310	3.01	30.303474	-103.643678
240	7.92	-41	270	2.97	30.305623	-103.644832
245	6.89	-28	290	2.89	30.307996	-103.645326
250	6.01	-37	320	2.81	30.310340	-103.645550
255	5.48	-31	300	2.76	30.312570	-103.645786
260	4.97	-11	250	2.71	30.314772	-103.645755
265	4.69	46	150	3.27	30.316430	-103.651972
270	4.83	82	130	4.39	30.318992	-103.663721
275	6.97	92	150	5.11	30.322997	-103.671074
280	10.30	102	180	5.95	30.328282	-103.679081
285	18.63	112	130	7.20	30.335741	-103.690477
290	30.28	124	150	8.52	30.345183	-103.701443
295	50.18	135	220	10.07	30.357232	-103.713103
300	74.80	159	240	12.10	30.373357	-103.727219
305	103.04	138	310	12.11	30.381445	-103.721444
310	133.96	140	280	13.00	30.394136	-103.721867
315	162.41	178	220	15.60	30.418147	-103.733031
320	190.97	206	260	17.54	30.439793	-103.735613
325	210.22	216	310	18.42	30.454654	-103.728226
330	228.48	220	280	18.98	30.466829	-103.717047
335	240.10	226	260	19.48	30.477800	-103.703937
340	247.51	233	280	19.93	30.487395	-103.689132
345	235.71	244	370	20.14	30.493955	-103.672408
350	222.31	257	250	20.36	30.499348	-103.654908
355	202.50	261	250	20.05	30.498606	-103.636237

Site: KVL(A)
 Coordinates: 30-19-08.4 N, 103-37-04.8 W
 Freq: 98.70000 MHz
 ERP: 250.00 W

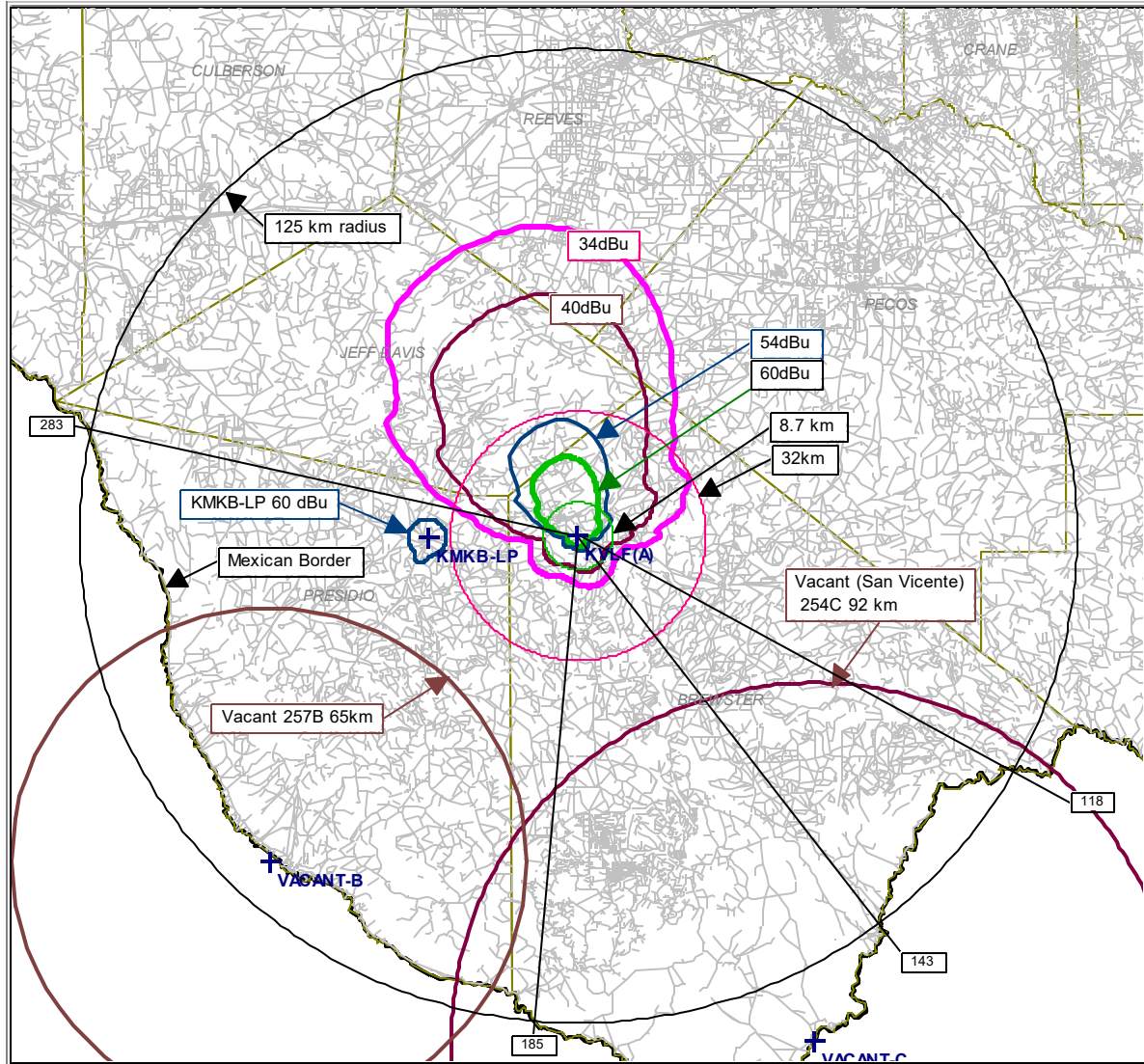
34 dBu interfering contour. Bearings within 125 km of Mexico are in BLUE.

Bearing	ERP W	HAAT	DH	Distance	Lat	Lon
0	181.05	260	330	77.71	31.017948	-103.618000
5	150.93	254	360	74.74	30.988676	-103.549656
10	122.15	244	300	71.02	30.948025	-103.488664
15	91.20	231	210	65.93	30.891709	-103.439140
20	64.52	213	230	59.77	30.824035	-103.403875
25	41.62	208	250	54.28	30.761289	-103.377873
30	24.81	197	280	47.35	30.687572	-103.370398
35	15.01	199	270	42.43	30.631348	-103.363626
40	8.46	197	300	36.93	30.573212	-103.370021
45	6.08	199	240	34.25	30.536606	-103.365070
50	4.49	185	190	30.65	30.495952	-103.372946
55	4.76	172	160	29.98	30.473432	-103.361685
60	5.11	177	160	31.01	30.458169	-103.337762
65	5.70	166	130	30.84	30.435914	-103.326401
70	6.32	133	200	28.16	30.405335	-103.342047
75	7.31	114	230	27.11	30.381834	-103.344946
80	8.19	89	290	24.49	30.357005	-103.366636
85	8.46	63	310	20.73	30.335078	-103.402738
90	8.56	61	290	20.48	30.318827	-103.404629
95	7.83	53	320	18.57	30.304304	-103.425306
100	6.97	45	280	16.18	30.293618	-103.451975
105	5.78	26	250	12.42	30.290032	-103.493056
110	4.76	8	350	11.86	30.282476	-103.501959
115	4.16	-25	420	11.49	30.275291	-103.509573
120	3.84	-55	540	11.27	30.268277	-103.516357
125	4.22	-79	600	11.53	30.259485	-103.519658
130	4.69	-105	650	11.82	30.250652	-103.523753
135	5.62	-87	590	12.34	30.240492	-103.527162
140	6.56	-62	620	12.80	30.230806	-103.532375
145	7.48	-32	610	13.21	30.221685	-103.539160
150	8.37	-7	500	13.57	30.213271	-103.547374
155	8.84	4	240	13.75	30.206924	-103.557534
160	9.12	9	270	13.85	30.201922	-103.568698
165	8.65	8	510	13.68	30.200170	-103.581161
170	8.01	12	320	13.43	30.200064	-103.593736
175	7.06	25	330	13.01	30.202400	-103.606197
180	6.16	29	340	12.61	30.205580	-103.618000
185	5.26	22	370	12.14	30.210241	-103.629011
190	4.42	18	370	11.65	30.215770	-103.639064
195	4.03	-5	400	11.40	30.219945	-103.648715
200	3.84	-19	430	11.27	30.223740	-103.658124
205	4.42	-18	380	11.65	30.223990	-103.669268
210	5.11	-10	270	12.05	30.225084	-103.680744
215	6.24	-53	250	12.65	30.225790	-103.693518
220	7.40	-47	170	13.17	30.228248	-103.706105
225	8.10	-33	240	13.46	30.233338	-103.717105
230	8.65	-31	300	13.68	30.239881	-103.727079
235	8.37	-36	310	13.57	30.248936	-103.733748
240	7.92	-41	270	13.39	30.258722	-103.738760
245	6.89	-28	290	12.94	30.269752	-103.740144
250	6.01	-37	320	12.53	30.280385	-103.740674
255	5.48	-31	300	12.26	30.290404	-103.741345
260	4.97	-11	250	11.97	30.300241	-103.740844
265	4.69	46	150	14.54	30.307515	-103.768906
270	4.83	82	130	20.49	30.318827	-103.831454
275	6.97	92	150	23.95	30.337539	-103.866635
280	10.30	102	180	27.88	30.362230	-103.904189
285	18.63	112	130	34.29	30.398376	-103.963412
290	30.28	124	150	40.62	30.443370	-104.016272
295	50.18	135	220	47.32	30.498119	-104.065697
300	74.80	159	240	54.99	30.565365	-104.115471
305	103.04	138	310	55.76	30.605773	-104.095281
310	133.96	140	280	59.10	30.659818	-104.091355
315	162.41	178	220	67.04	30.744434	-104.114089
320	190.97	206	260	72.63	30.818501	-104.106929
325	210.22	216	310	75.06	30.871290	-104.069176
330	228.48	220	280	76.64	30.915358	-104.019731
335	240.10	226	260	77.98	30.954249	-103.963657
340	247.51	233	280	79.15	30.987643	-103.902007
345	235.71	244	370	79.64	31.010704	-103.834300
350	222.31	257	250	80.13	31.028684	-103.764045
355	202.50	261	250	79.27	31.029291	-103.690520

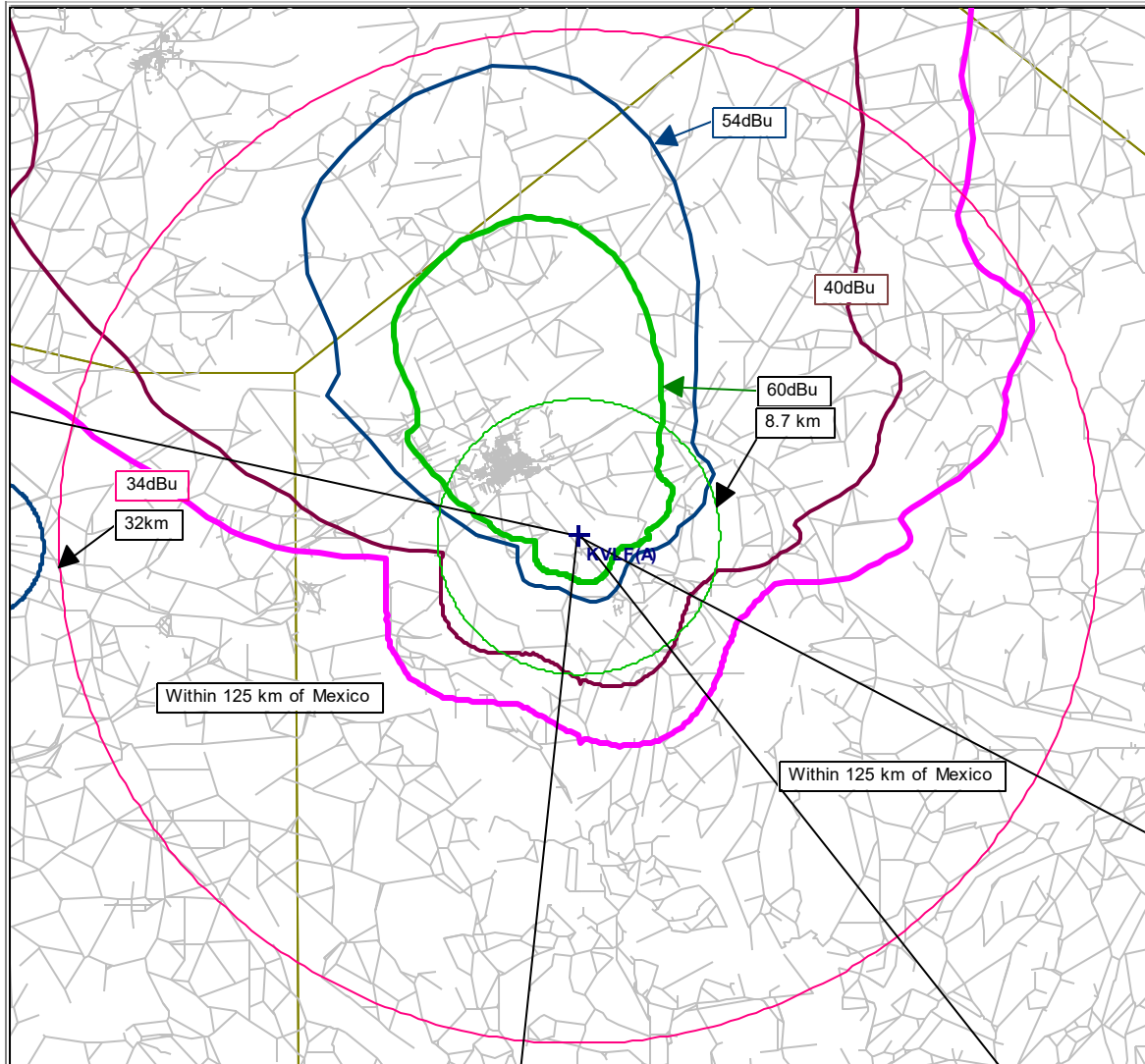
ComStudy 2.2 search of channel 254 (98.7 MHz Class D) at 30-19-08.4 N, 103-37-04.8 W.

CALL	CITY	ST	CHN	CL	DIST	SEP	BRNG	CLEARANCE
KMKB-LP	MARFA	TX	255	LP100	37.71	13.00	269.0	26.16 dB
VACANT-B	ALLOTMENT	XX	257	B	114.16	0.00	223.0	19.69 dB
VACANT-C	ALLOTMENT	XX	254	C	142.70	0.00	155.2	14.08 dB

KVL(A) - Interference Study



KVL(A) - Interference Study



Also demonstrating Mexico Agreement compliance.

CROSS-SERVICE FILL-IN TRANSLATOR: KVLF(AM)

