

Exhibit 1

Engineering Statement in support of
FCC FORM 340
APPLICATION FOR CONSTRUCTION PERMIT FOR RESERVED CHANNEL
NONCOMMERCIAL EDUCATIONAL BROADCAST STATION
(For a Minor Amendment to Pending Application BNPED-20071019ATD)

Introduction:

This is a minor amendment to the pending application by WAMC (the Applicant) for a new NCE FM Radio Station serving the community of Mount Kisco New York.

Changes in this amendment include: Section III items 1 and 2; Section IV item 4; Section VII Items 10 and 12. Specifically, the amendment involves a reduction in maximum ERP from zero horizontal and 0.26 vertical to zero horizontal and 0.20 vertical and an adjustment in the directional antenna parameters. Further, the terrain data used to calculate coverage and interference was changed from USGS-3-arc-second to FCC-30-arc-second. These changes in power and terrain data resulted in changes to the population and area.

The modified facility's 60 dBu service contour encompasses a total land area of 75.3 km² and contains 25,271 persons based on the US Census year 2000 block level data. See Exhibit 1B. This represents a decrease in coverage area of 7.4 km² and an increase in population of 25 persons when compared with the original proposal.

The modified facility will provide first service NCE to 0 individuals and second service NCE to 25271 individuals of the covered population. This represents a decrease in first service of 554 persons and an increase in second service of 697 persons when compared with the original proposal. See Exhibit 11

The site is over 320 km from the Canadian border.

This proposal will be implemented on an existing unregistered structure. The overall height of the structure will not be changed by this proposal.

This proposal is in compliance with 73.525 in that there is no predicted TV6 interference zone. See Exhibits 19A & 19B.

The proposed facility is in compliance with 47 C.F.R. Section 1.1306 with regards to radio-frequency electromagnetic exposure. See Exhibit 22.

The closest FCC Monitoring Station is Canandaigua, New York, which is 350 km from the proposed site. The proposal is sufficiently distant from all facilities mentioned in 73.1030(a) & (b). Therefore this application complies with the notification requirements of 73.1030.

When analyzing the difference in coverage area and population described above the fact that the original and modified studies were performed using different terrain data must be considered. In particular, the loss of first service population is due to a change in the coverage of an existing authorization rather than from the change in the proposed facility.

Joseph M. DiPietro, P.E.
RFEngineers, Inc.
November 2007

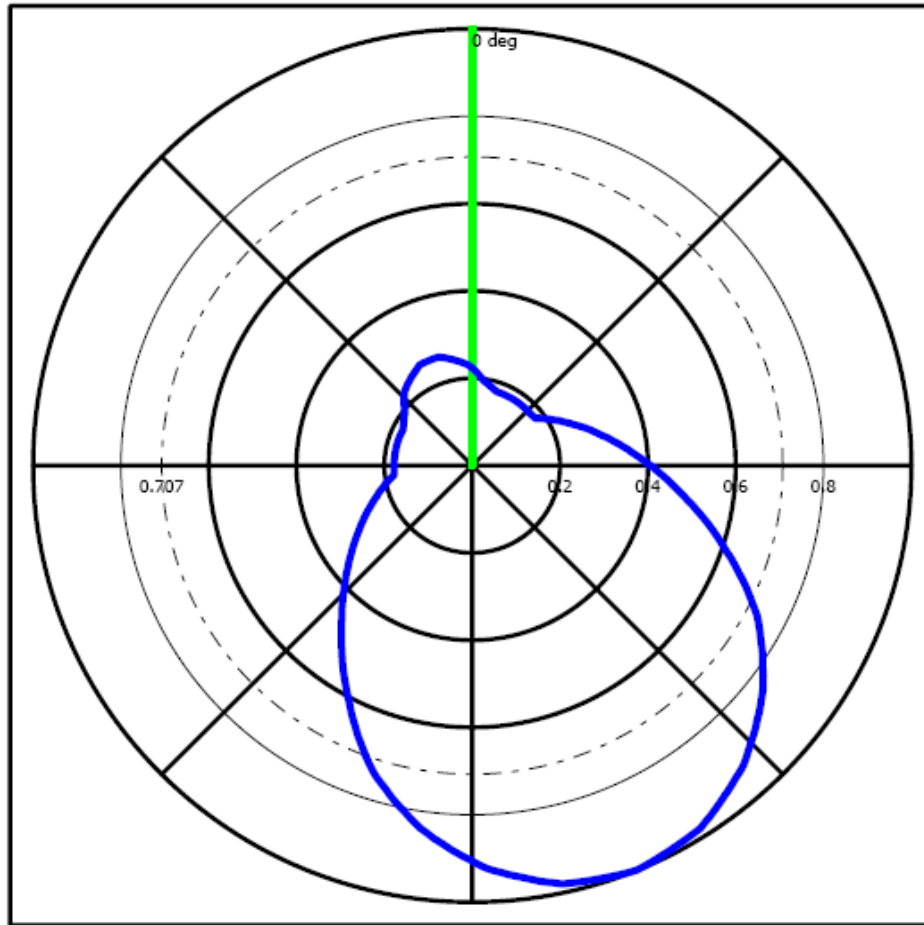
Section VII Engineering Data:

Tech Box Data:

- 1.Channel 205
- 2.Class A
- 3.Antenna Location Coordinates
 - 41° 14' 20" N
 - 073° 42' 48" W
- 4.Proposed Assignment Coordinates, Not Applicable
- 5.Antenna Structure Registration, Not Applicable
- 6.Overall Tower Height, 23 meters AGL
- 7.Radiation Center Height, 167 meters (H) 167 meters (V) AMSL
- 8.Radiation Center Height, 23 meters (H) 23 meters (V) AGL
- 9.Radiation Center Height, 35 meters (H) 35 meters (V) HAAT
- 10.ERP, 0.0 kW (H) 0.20 kW (V)
- 11.Maximum ERP if beamtilt used, Not Applicable
- 12.Direction Antenna, Yes, See Exhibit 1A.
- 13.Main Studio Location, Waiver requested. See Exhibit 13.
- 14.Community Coverage, Yes, See Exhibit 14.
- 15.Interference, No. Interference accepted from U.N. vacancy on channel 206.
 - a)Section 73.509, Checked. See Exhibits 16, Stations and Proposals requiring investigation.
 - b)Section 73.207, Checked. Clear of all domestic stations and authorizations.
 - c)Section 73.213, Not Checked. Not Applicable.
 - d)Section 73.215, Not Checked. Not Applicable
 - e)Section 73.525, Checked. See Exhibit 16 and 19.
- 16.Reserved Channel above 220, Not Applicable
- 17.International Border, Yes
18. NEPA, Yes. Operation of this facility will not have a significant environmental impact. To the best knowledge of the Applicant:
 - a)The existing structure is not located in an officially designated wilderness area or wildlife preserve.
 - b)The existing structure does not threaten the existence or habitat of endangered species.
 - c)The existing structure will not involve high intensity white lighting in a residential neighborhood.
 - d)The existing structure will not affect districts, sites, buildings, structures or objects significant in American history, architecture, engineering or culture that are listed in the National Register of Historic Places, or are eligible for listing.
 - e)The existing structure does not affect Indian religious sites.
 - f)The site is not located in a flood plain.
 - g)Nothing is proposed that would require significant changes in surface features such as wetland fill, deforestation or water diversion.
 - h)This proposal complies with the FCC established guidelines regarding exposure to RF electromagnetic fields, See Exhibit 22.
- 19.Community of License Change, Not Applicable.

Exhibit 1A

Directional Antenna Parameters



Degree	Field	Degree	Field	Degree	Field	Degree	Field	Degree	Field	Degree	Field
000	0.223	060	0.210	120	0.756	180	0.906	240	0.298	300	0.181
010	0.192	070	0.262	130	0.857	190	0.819	250	0.240	310	0.202
020	0.178	080	0.326	140	0.934	200	0.708	260	0.193	320	0.234
030	0.178	090	0.406	150	0.984	210	0.578	270	0.178	330	0.254
040	0.178	100	0.507	160	0.996	220	0.463	280	0.178	340	0.260
050	0.178	110	0.629	170	0.969	230	0.371	290	0.178	350	0.246

Additional Radial 158° 1.000

Exhibit 1B

60dBu Contour Area and Population.

The proposed facility's 60 dBu service contour encompasses a total area of 75 km² and contains 25,271 persons based on the US Census year 2000 block level data. No adjustments were made for large bodies of water. See the Land-Use-Land-Characterization map below.

The contour was created using the methods and procedures described in 47 C.F.R. Section 73.313(c). The area was calculated using a spline integration in one-degree increments. The population was calculated by testing each US Census defined population point in the region with a point-in-polygon method. The population was summed for each point within the 60dBu polygon using data from the 2000 US Census.

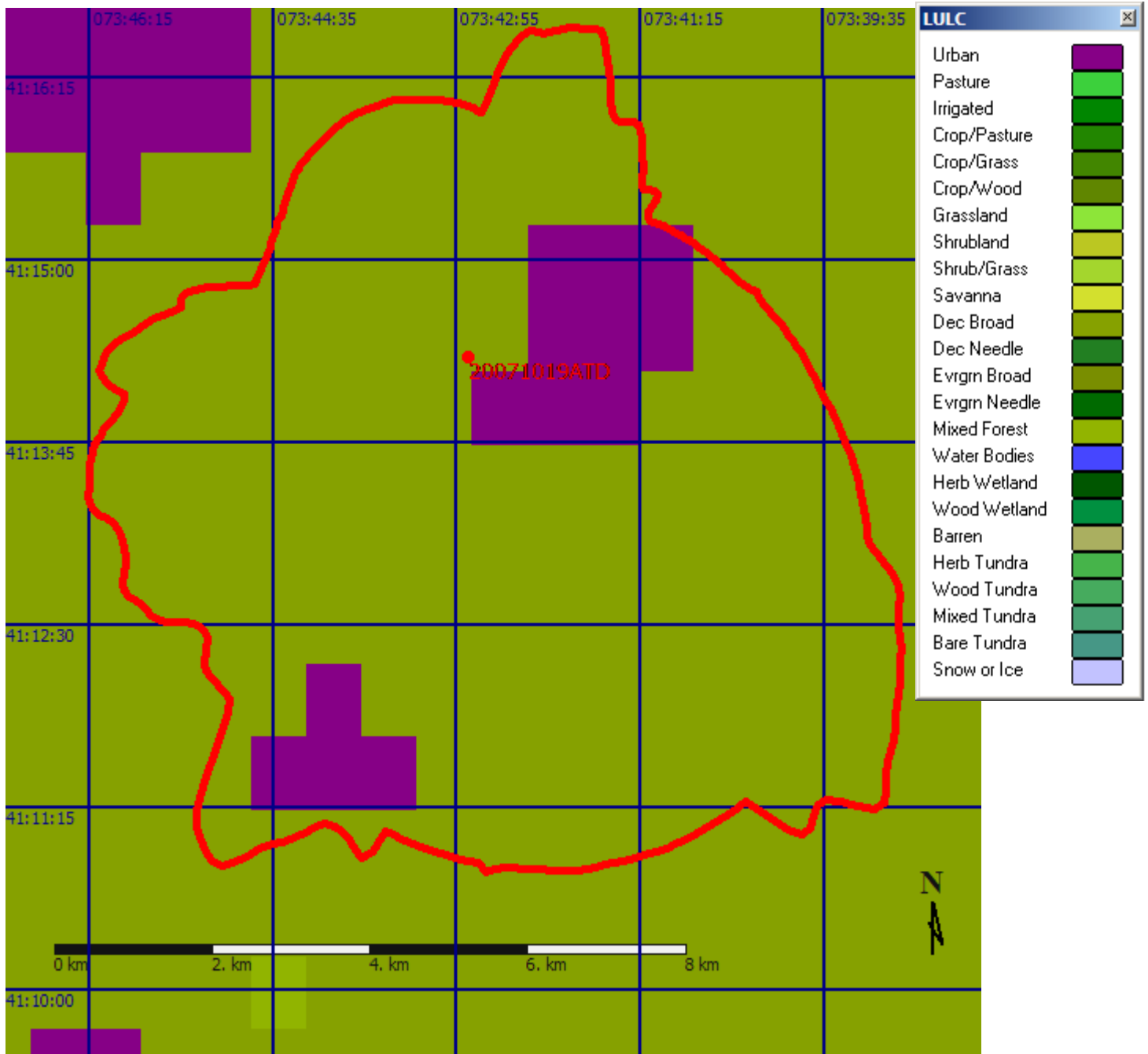


Exhibit 11

Fair Distribution

Using the centroid method for calculating population, based on Census 2000 census block data, the number of people residing within the radio station's 60 dBu (1 m/Vm) service contour (calculated based on the standard curves in 47 C.F.R. Section 73.313(c)) is:

25,271

Ten percent of the total population is:

2,527

The number of people within the radio station's 60 dBu (1 m/Vm) service contour who will receive a first NCE aural service from the proposed facility is:

0 (0.0%)

The number of people within the radio station's 60 dBu (1 m/Vm) service contour who will receive a second NCE aural service from the proposed facility is:

25,271 (100.0%)

Exhibit 14

Community-of-License Coverage

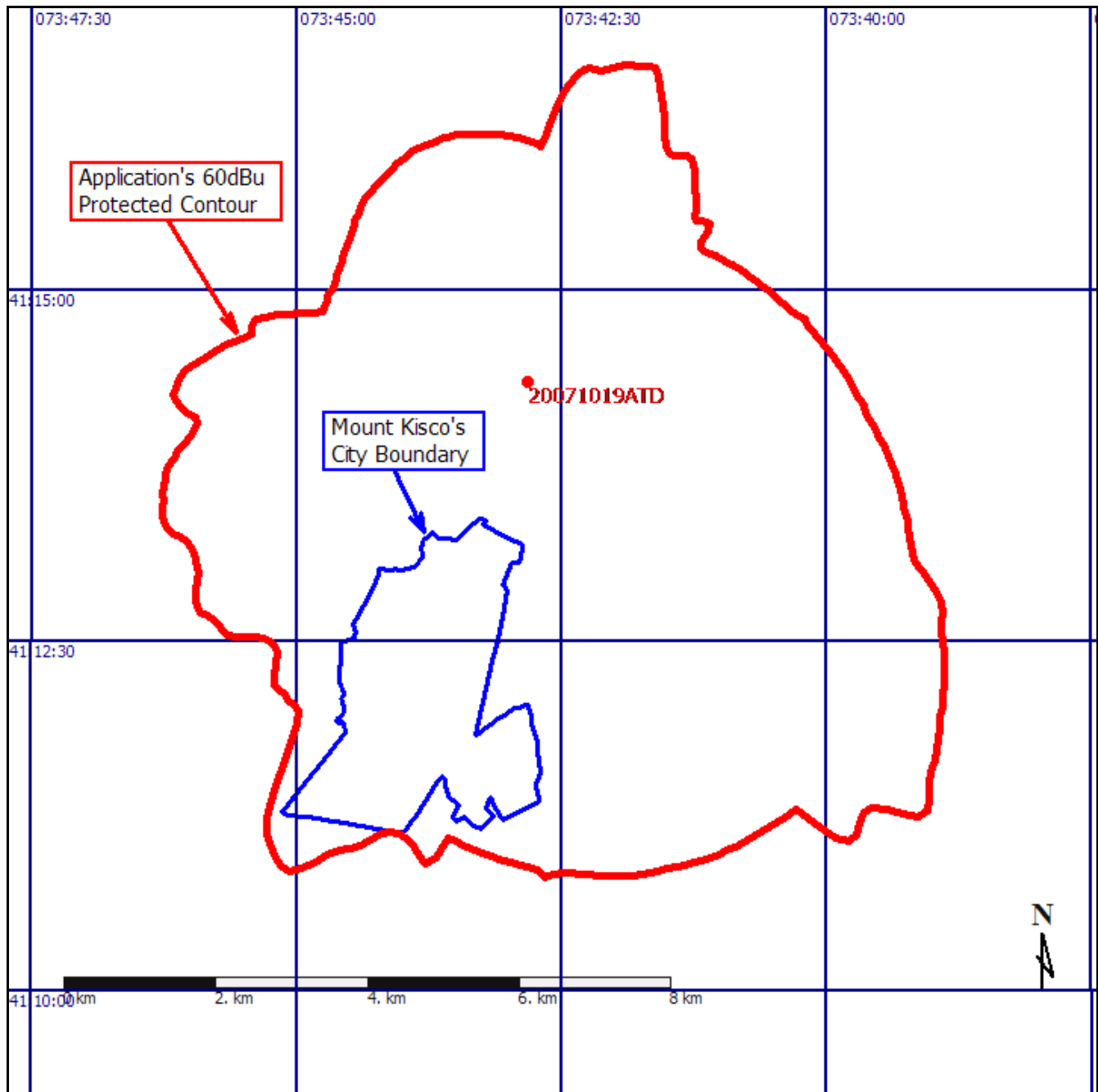


Exhibit 16

Stations and Proposals Requiring Investigation

ID	City	St	Chan	CL	Stat	Prefix	ARN	Dist	Min 207	Clear 207
WNYU-FM	NEW YORK	NY	206	B1	LIC	BLED	1123	45.6	N/A	N/A
U.N.	NEW YORK	NY	206	B	VAC			58.39	N/A	N/A
WFDU	TEANECK	NJ	206	A	LIC	BLED	901	35.55	N/A	N/A
WJMJ	HARTFORD	CT	205	B1	LIC	BLED	19971010KA	82.81	N/A	N/A
WRPJ	PORT JERVIS	NY	205	A	LIC	BLED	19921112KZ	75.62	N/A	N/A
WFRS	SMITHTOWN	NY	205	A	LIC	BLED	19900521KA	65.63	N/A	N/A

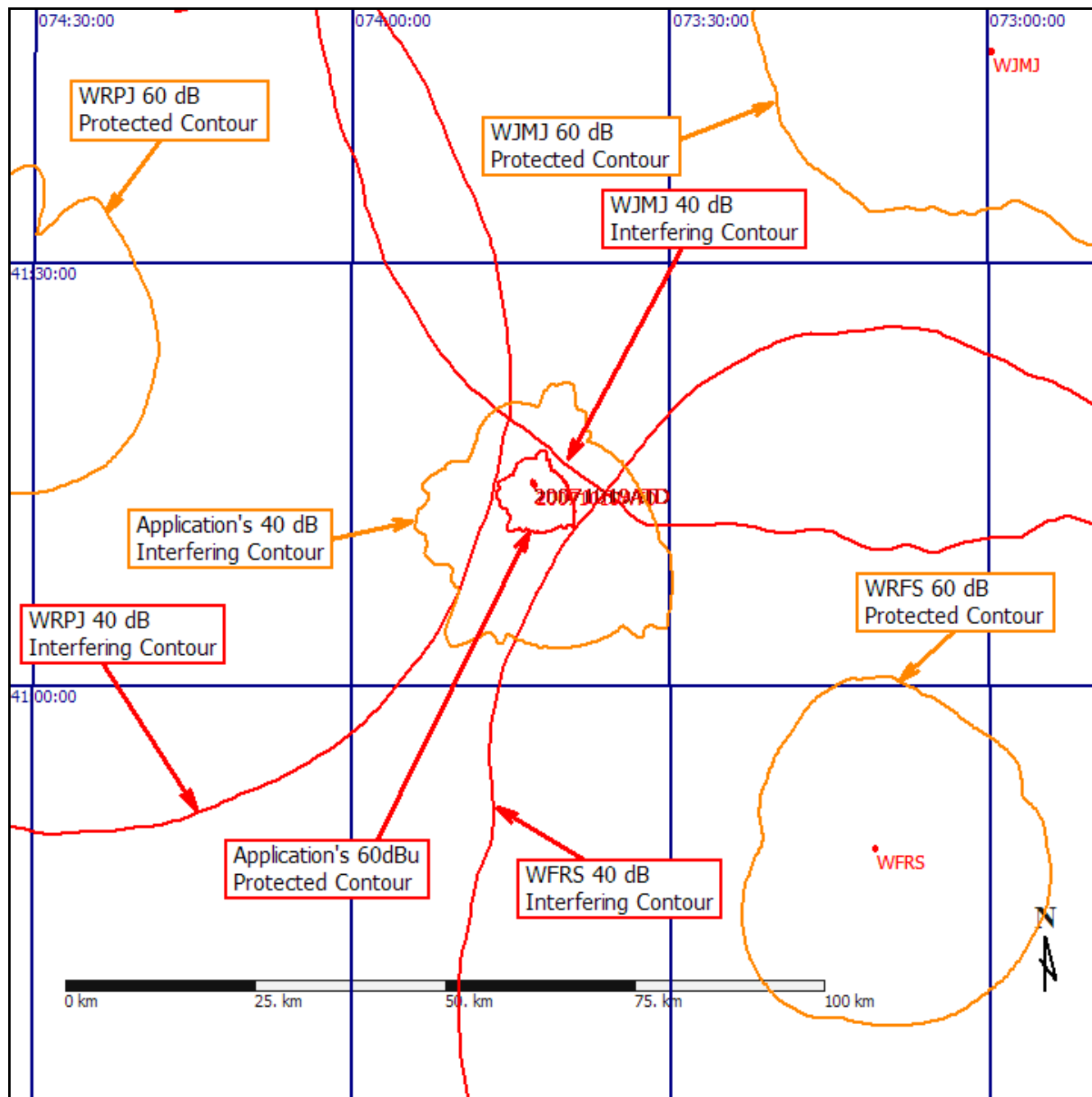
Note: Interference from the U.N. Vacancy on channel 206 is accepted.

ID	City	St	Chan	CL	Stat	Prefix	ARN	Dist	Min 207	Clear 207
WNYZ-LP	NEW YORK	NY	6					57.95	225	-167.05
WNYZ-LP	NEW YORK	NY	6					57.95	225	-167.05
WEDY	NEW HAVEN	CT	6					68.29	225	-156.71
WRGB	SCHENECTADY	NY	6					157.01	225	-67.99
WPVI-TV	PHILADELPHIA	PA	6					185.18	225	-39.82
WLNE-TV	NEW BEDFORD	MA	6					214.67	225	-10.33

See Exhibits 19A & 19B.

Exhibit 16A

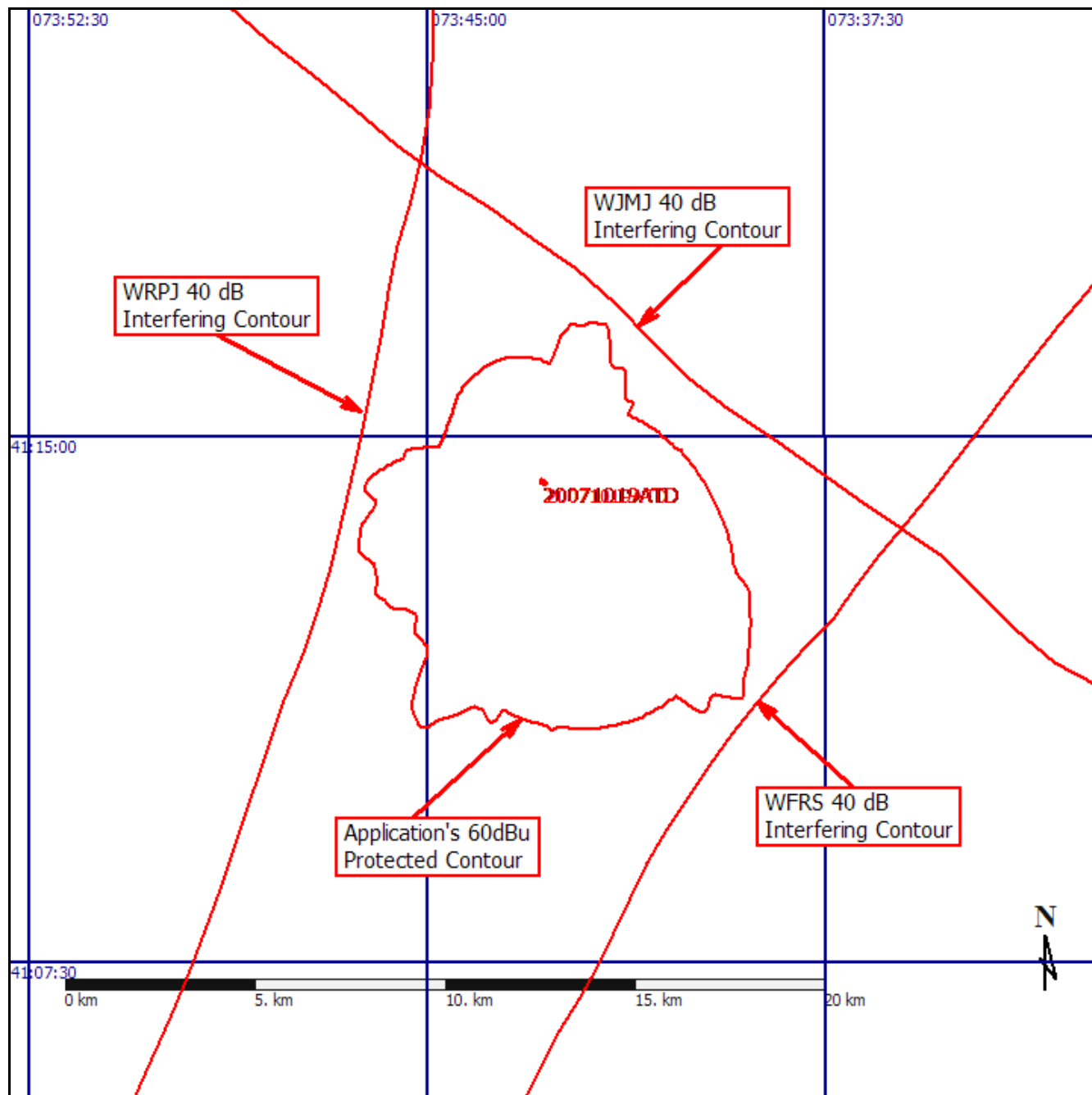
Co-Channel Contour Protection



Contours are color-coded so that prohibited overlap is indicated by LIKE color contours overlapping.

Exhibit 16B

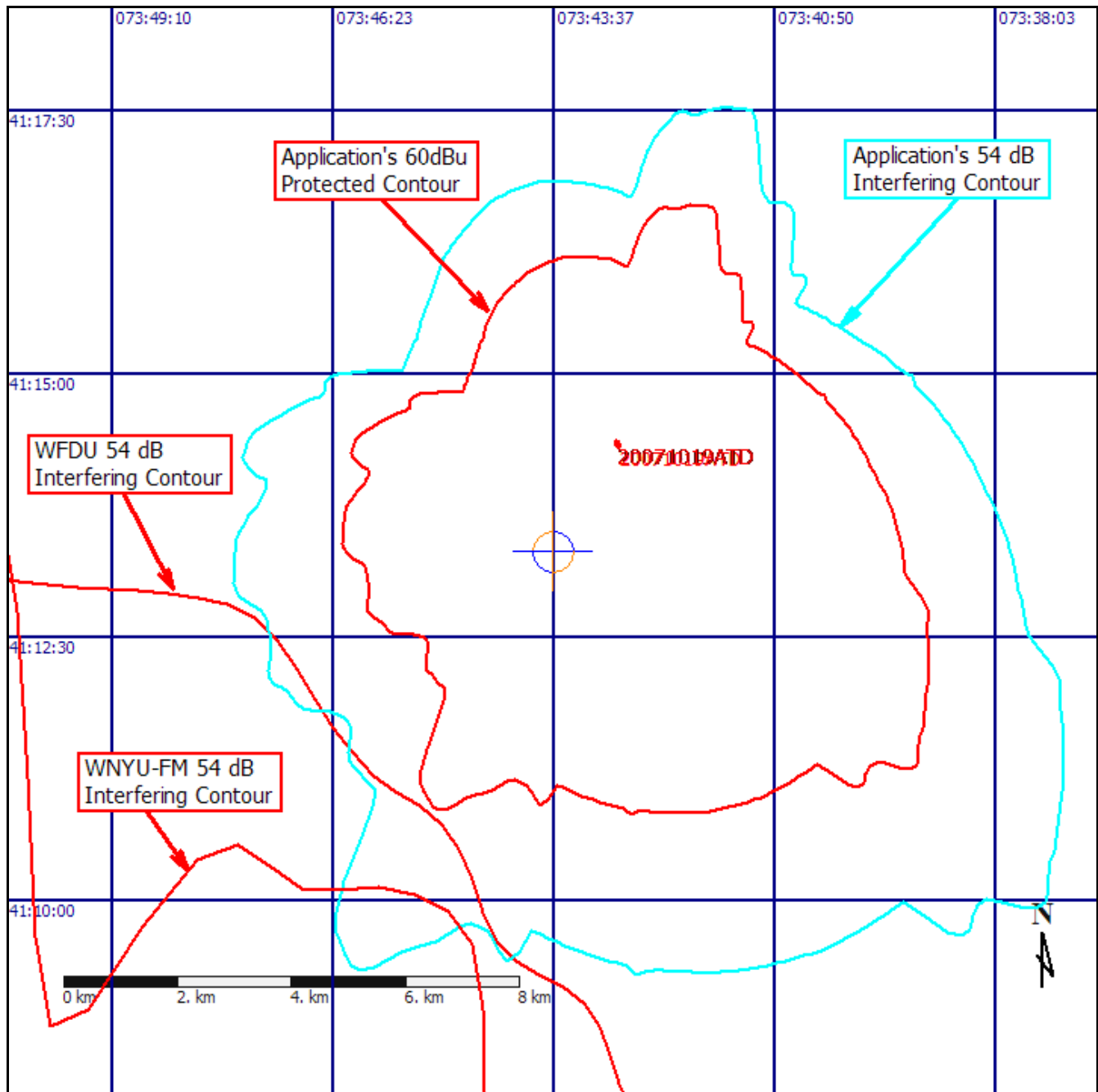
Close-up Co-Channel Contour Protection



Contours are color-coded so that prohibited overlap is indicated by LIKE color contours overlapping.

Exhibit 16C

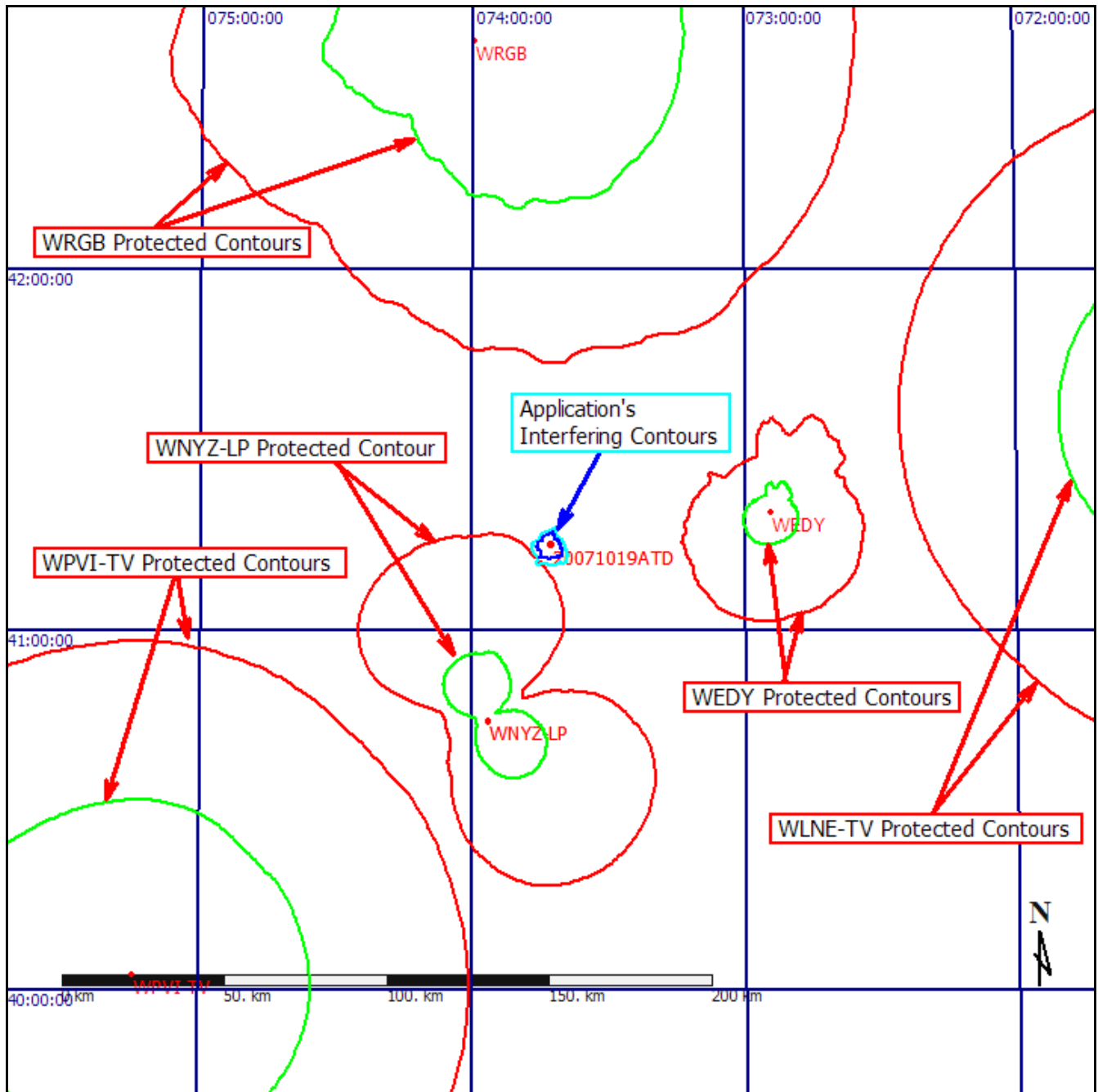
First Adjacent Contour Protection



Contours are color-coded so that prohibited overlap is indicated by LIKE color contours overlapping.

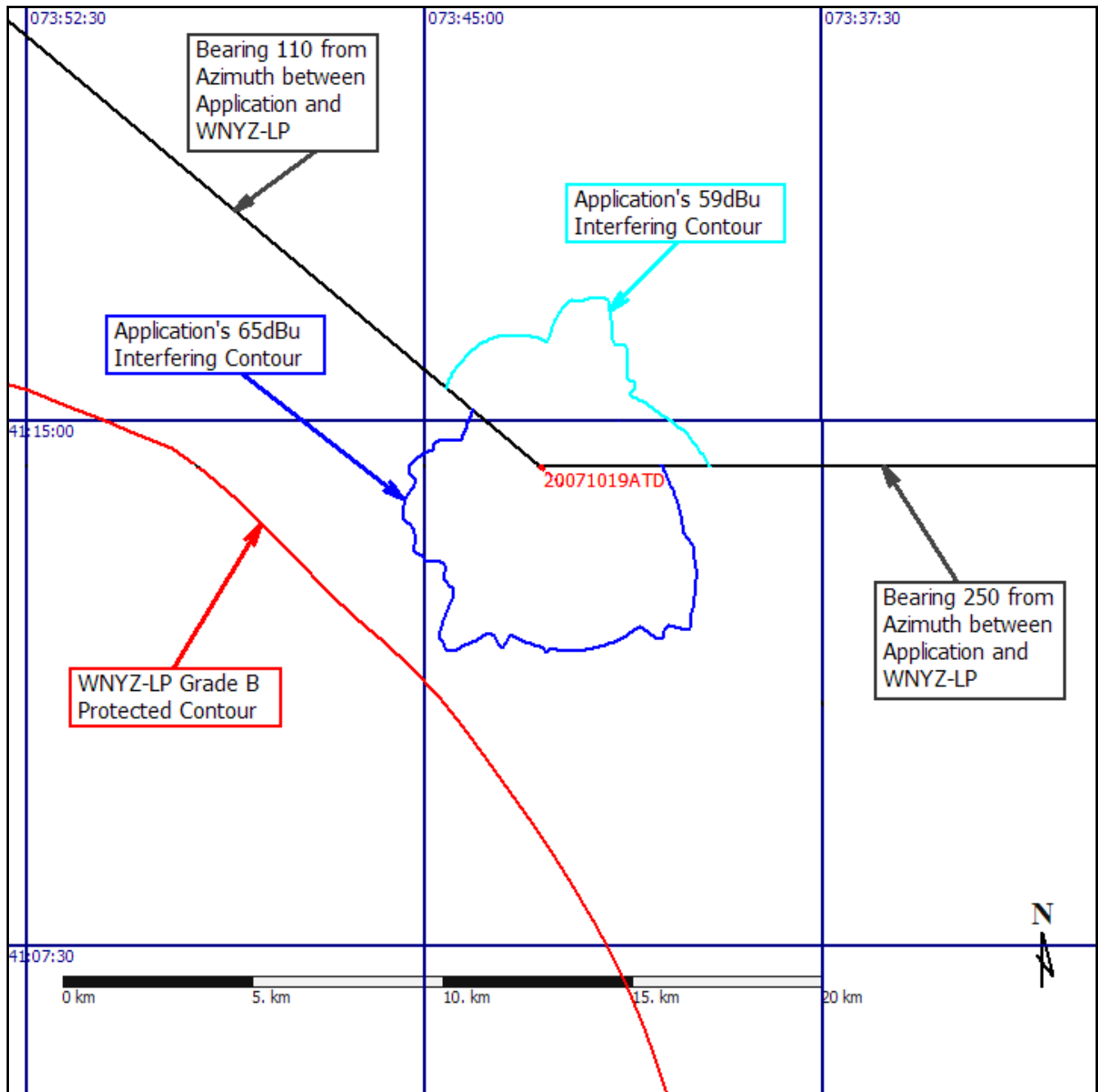
Exhibit 19A

TV-6 Interference Study



No TV-6 Interference with WPVI-TV, WEDY, WLNE-TV, or WRGB

Exhibit 19B
TV-6 Interference Study Close-Up



No interference with WNYZ-LP

Exhibit 22

RF Exposure

The Applicant will cooperate with all site users, managers and owners with regard to the cessation of operation or the reduction of operating power, whenever it is necessary to comply with the FCC Regulations and Guidelines on Human Exposure to Non-Ionizing RF Radiation.

The modeled contribution to the RF environment, 2-meters above the ground, by the proposed facility is less than 3.8 uW/cm^2 , or 1.9%, of the maximum permitted value for general public exposure (0.4% of the occupational exposure level). This result was obtained using the FCC's FM Model computer program.

The following parameters were used to calculate the exposure level:

Horizontal ERP 0.0 kW
Vertical ERP 0.20 kW
Antenna Radiation Center Height AGL 23 meters
Test Height, 2 meters AGL
Antenna Type Scala CA2-FM/V.

There are no occupied tall structures within 50 meters of the tower. The ground does not rise significantly around the tower.

Since the modeled contribution to the RF environment by proposed facility is less than 5% of the permitted level for public exposure this application is excluded from routine evaluation. See 1.1307(b)(3)(i).

Based on this information the proposed facility is in compliance with 47 C.F.R. Section 1.1306 with regards to radio-frequency electromagnetic exposure.

RF Exposure Analysis Performed by:
Joseph M. DiPietro, P.E.
RFEngineers, Inc.
17 November 2007