

TECHNICAL EXHIBIT
APPLICATION FOR DTV CONSTRUCTION PERMIT
IN SUPPORT OF ITS POST-TRANSITION FACILITY
STATION WECT-DT (FACILITY ID 48666)
WILMINGTON, NORTH CAROLINA

APRIL 30, 2008

CH 44 710 KW (MAX-DA) 590 M

TECHNICAL EXHIBIT
APPLICATION FOR DTV CONSTRUCTION PERMIT
IN SUPPORT OF ITS POST-TRANSITION FACILITY
STATION WECT-DT (FACILITY ID 48666)
WILMINGTON, NORTH CAROLINA
CH 44 710 KW (MAX-DA) 590 M

Table of Contents

Technical Narrative

Figure 1	Antenna and Supporting Structure
Figure 2	Antenna Patterns
Figure 3	Predicted FCC Coverage Contours
Figure 4	OET-69 Interference Analysis (<i>pre-transition</i>)
Figure 5	OET-69 Interference Analysis (<i>post-transition</i>)

TECHNICAL EXHIBIT
APPLICATION FOR DTV CONSTRUCTION PERMIT
IN SUPPORT OF ITS POST-TRANSITION FACILITY
STATION WECT-DT (FACILITY ID 48666)
WILMINGTON, NORTH CAROLINA
CH 44 710 KW (MAX-DA) 590 M

Technical Narrative

This Technical Exhibit supports an application for digital television (DTV) station WECT-DT for its final DTV operation at Wilmington, North Carolina. This application requests a construction permit (CP) for post-transition operation on its digital channel (44), using a master, directional antenna from a new transmitter site.

WECT-DT seeks to construct post-transition digital facilities at the new site because it has determined that the constructed and licensed post-transition DTV facilities that it has constructed do not serve the full population predicted to be served by the engineering models. Specifically, the station has identified a “null” in the station’s signal, preventing viewers located in the coastal area of the station’s service area from receiving an over-the-air signal. These viewers particularly rely on over-the-air service to receive emergency information relating to the frequent severe weather in their area.

To ensure that these viewers will continue to receive service from WECT-DT after the transition, WECT-DT proposes to construct the final post-transition facility described in this application. This facility will serve all of the viewers who currently receive service from WECT-DT’s licensed operation and will provide additional service to a significant number of the station’s current analog viewers who are not served by the existing WECT-DT facility.

Proposed Facilities

Station WECT-DT proposes to operate DTV channel 44 from a new site to be shared with stations WSFX-DT and WWAY-DT. It is proposed to operate with a directional antenna maximum effective radiated power (ERP) of 710 kilowatts and antenna height above average terrain (HAAT) of 590 meters. The transmitter site coordinates are:

34° 07' 53" North Latitude
78° 11' 17" West Longitude

A sketch of antenna and pertinent elevations are included as Figure 1. Figure 2 depicts the proposed horizontal azimuthal antenna pattern.

Figure 3 is a map showing the DTV predicted coverage contour and the associated Appendix B coverage contours. For each noise-limited contour, the 41.5 dBu dipole-adjusted contour was used, as well as 360-radials and a 3-second digitized terrain database.

The proposed 48 dBu contour will encompass all of Wilmington. The Wilmington city limits were derived from information contained in the 2000 U.S. Census of Population and Housing.

Population Served

The herein proposed WECT-DT facility is predicted to serve 926,086 persons, post-transition, based upon the 2000 Census. WECT-DT's associated Appendix B facility is predicted to serve 591,296 persons. Therefore, the herein proposed WECT-DT facility would serve more than 100% of WECT-DT's Appendix B population.

Allocation Considerations – *pre-transition*

An allocation study was completed to ensure that the proposed facilities would not cause impermissible interference to any existing station. The proposed WECT-DT operation meets the FCC's pre-transition interference standards to pertinent Class A and DTV allotments using the procedures outlined in the FCC's OET-69 Bulletin, a 2 kilometer grid cell size and 1990 U.S. Census. The results of the interference analyses are summarized in Figure 4. The DTV allotment for channel 44 at Jacksonville, NC (WUNM-DT) has been removed from the OET-69 study as it no longer exists. Station WUNM-DT is now operating on channel 20.¹

Sheets 1 through 13 summarize the interference caused to all stations. As some of the studies stations resulted in many scenarios, only the worst case scenario is shown in Figure 4. It is noted in Sheet 6 that new interference in the amount of 12% is predicted to be caused to station WYBE-CA (Channel 44, Pinehurst, NC). However, this represents new interference to only 24 new WYBE-CA viewers as compared to the interference caused by the currently licensed WECT-DT facility.

Specifically, sheets 14 through 17 summarize the interference received by WYBE-CA with consideration of WECT-DT as licensed. Sheets 18 through 21 summarize the interference received by WYBE-CA with consideration of the proposed WECT-DT 710 kW ERP proposal. The pertinent scenarios are shown in bold and indicate that the WECT-DT proposal will increase the interference caused to WYBE-CA from 2,292 people (30.5%) to 2,316 people (30.8%) or an increase of only 0.3%. Since this is less than the permitted 0.5%, it is believe that the predicted interference caused by the proposed WECT-DT operation is de minimis.

¹ See BPRM-20000417AAD and BLEDT-20021105AAI

Allocation Considerations – *post-transition*

Since the proposed WECT-DT transmitter site is not within 5 kilometers of the Commission's *Appendix B* transmitter site, an allocation study was completed to ensure no prohibited interference would occur in the post-transition world. The proposed WECT-DT operation meets the FCC's post-transition interference standards to pertinent Class A and DTV allotments using the procedures outlined in the FCC's OET-69 Bulletin and a 2 kilometer grid cell size. The results of the interference analyses are summarized in Figure 5.

The proposed facility would create a contour that extends beyond the contour of the licensed WECT-DT facility, which matches Appendix B to the DTV Table of Allotments. In order to provide service to the viewers who do not receive service from the existing facility, the applicant respectfully requests a waiver of the DTV freeze to the extent necessary. In addition, because the proposed service contour is predicted to extend beyond the Appendix B contour over the unpopulated Atlantic Ocean, a waiver of the freeze is requested to the extent necessary to authorize such extension.

Radiofrequency Electromagnetic Field Exposure

The proposed WECT-DT facilities were evaluated in terms of potential radio frequency (RF) energy exposure at ground level to workers and the general public. The radiation center for the proposed DTV antenna is located 587 meters above ground level with a maximum ERP of 710 kW. A conservative relative field value of 0.5 was assumed for the calculation. The calculated power density at a point 2 meters above ground level will not exceed 0.017 mW/cm^2 . This is less than 5% of the FCC's recommended limit of 0.44 mW/cm^2 for channel 44 for an "uncontrolled" environment.

Access to the transmitting site will be restricted and appropriately marked with warning signs. As this will be a multi-user site an agreement will control site access. In the event that workers or other authorized personnel enter restricted areas or climb the tower,

appropriate measures will be taken to assure worker safety with respect to radio frequency radiation exposure. Such measures include reducing the average exposure by spreading out the work over a longer period of time, wearing "accepted" RFR protective clothing and/or RFR exposure monitors or scheduling work when the stations are at reduced power or shut down. The proposed WECT-DT operation appears to be otherwise categorically excluded from environmental processing.

It is noted that this statement only addresses the potential for radiofrequency electromagnetic field exposure. All other aspects of the environmental processing analysis will be or already have been provided to the FCC by the tower owner.



Jonathan N. Edwards

du Treil, Lundin & Rackley, Inc.

201 Fletcher Avenue

Sarasota, Florida 34237

(941) 329-6000

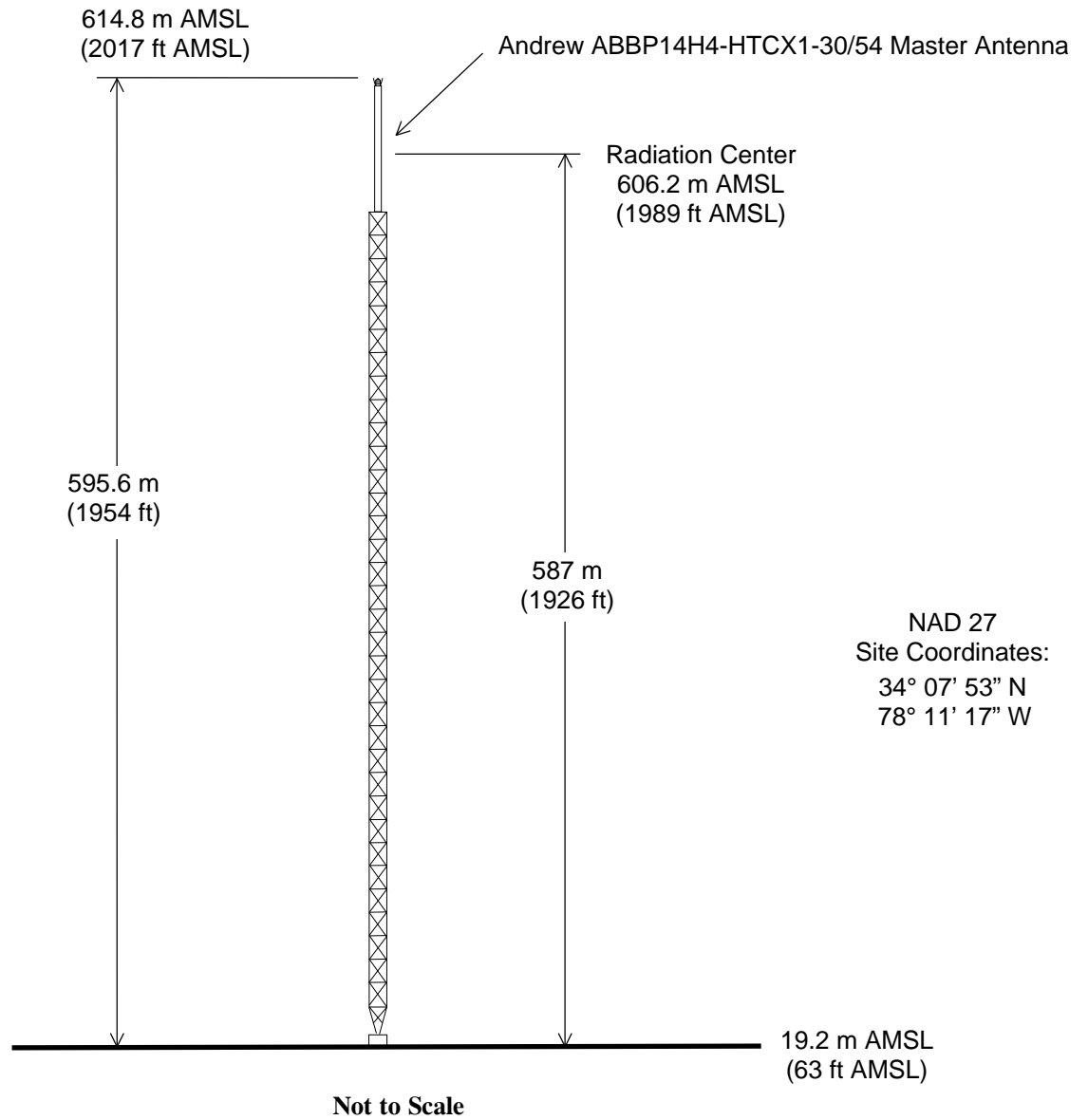
JON@DLR.COM

April 30, 2008

Figure 1



Registration No. 1008242



ANTENNA AND SUPPORTING STRUCTURE

STATION WECT-DT
WILMINGTON, NORTH CAROLINA
CH 44 710 KW 590 M

du Treil, Lundin & Rackley, Inc. Sarasota, Florida

Figure 2



ANDREW

AZIMUTH PATTERN

Type: CH44AZ-H-BID-CX1

	Numeric	dBd
Directivity:	<u>1.85</u>	<u>(2.67)</u>
Peak(s) At:	<u></u>	
Polarization:	<u>Horizontal</u>	
Channel:	<u>44</u>	
Location:	<u>Wilmington, NC</u>	

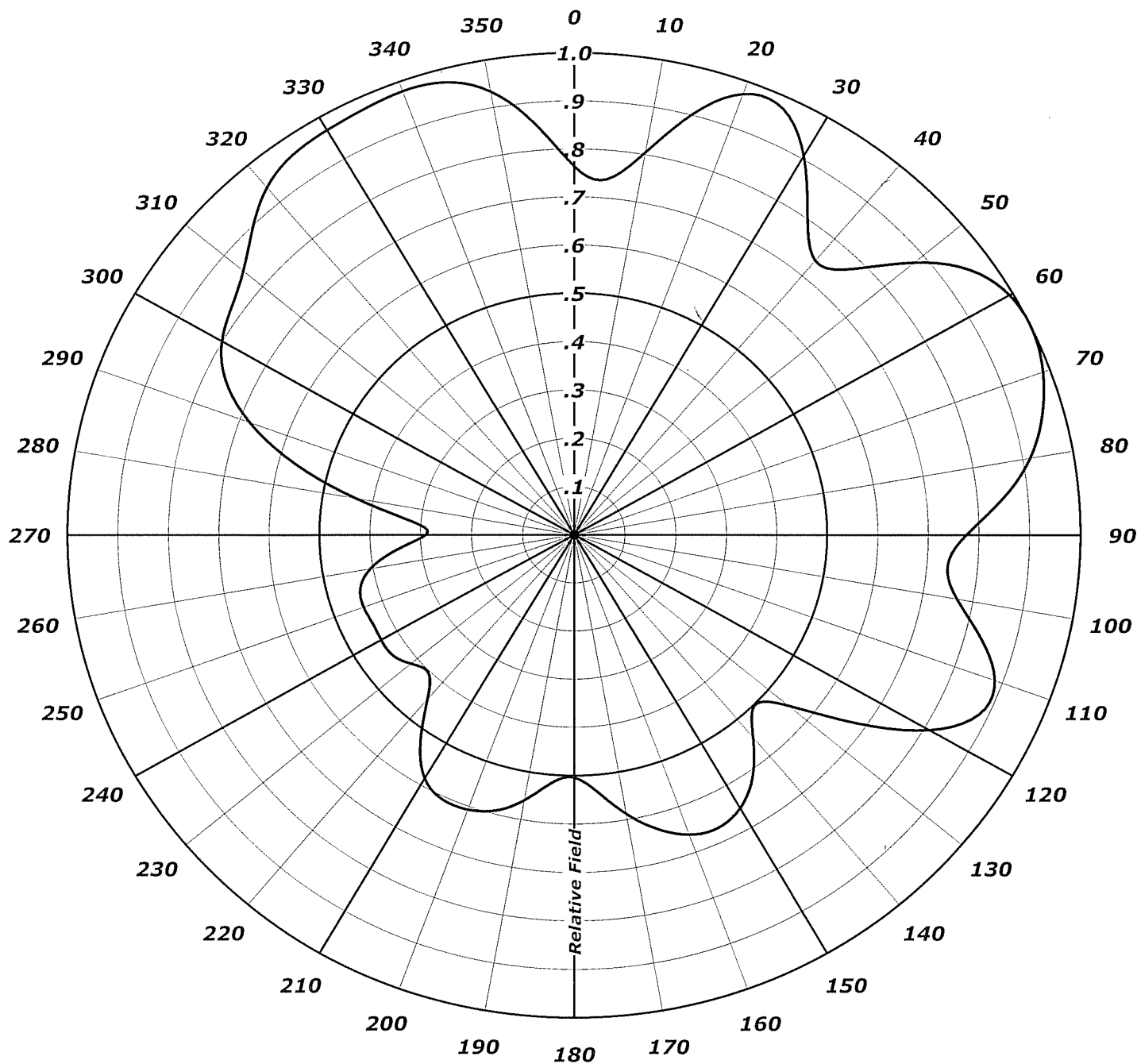




Figure 2 ELEVATION PATTERN

Type:	ABBP14H4H-44	
Directivity:	Numeric	dBd
Main Lobe:	32.40	(15.11)
Horizontal:	9.60	(9.82)
Beam Tilt:	1.00	
Polarization:	Horizontal	
Channel:	44	
Location:	Wilmington, NC	

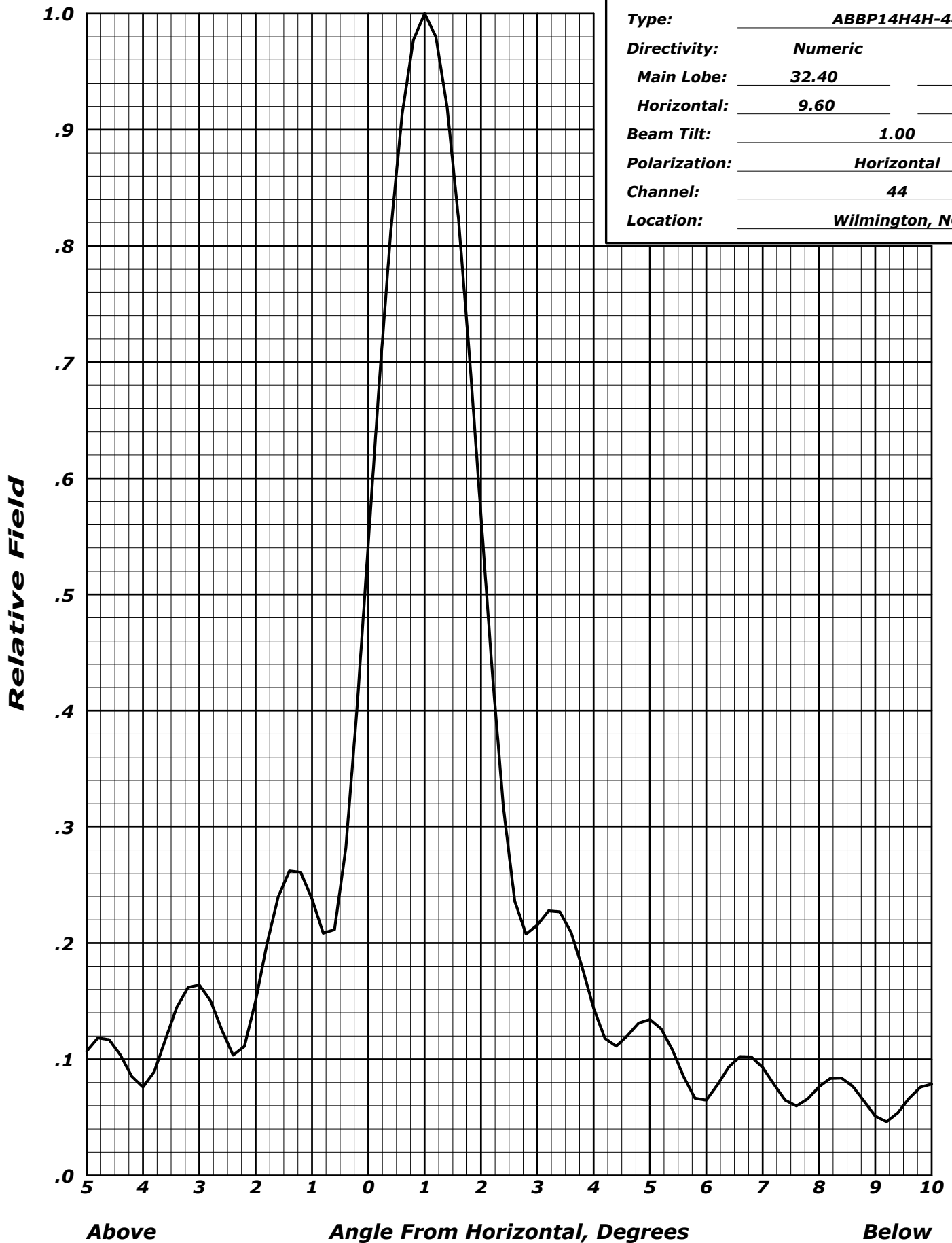
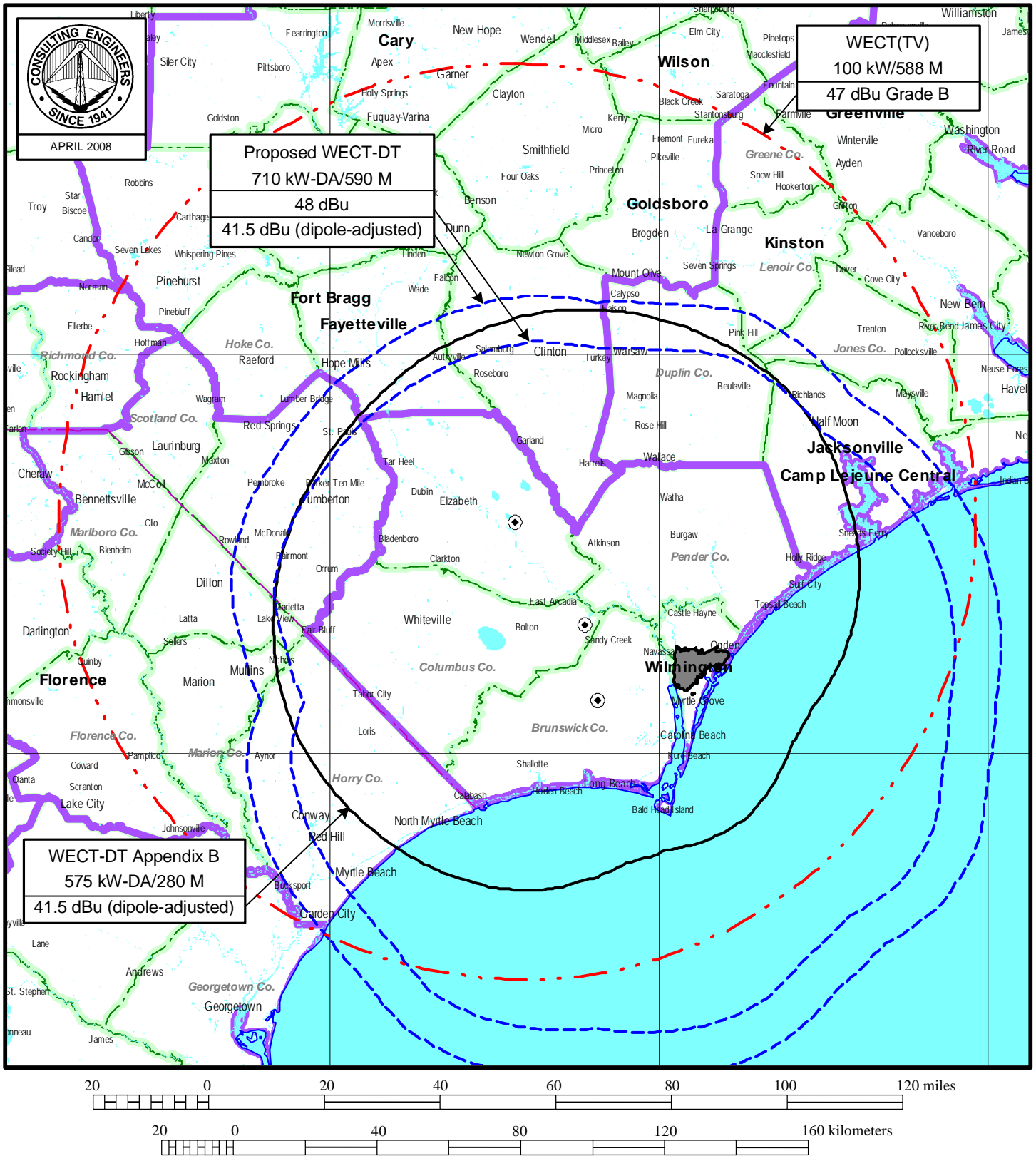


Figure 3



WECT-DT PRE-TRANSITION INTERFERENCE CAUSED STUDY

Census data selected 1990

TV INTERFERENCE and SPACING ANALYSIS PROGRAM

Date: 04-22-2008 Time: 12:11:29
Record Selected for Analysis

WECT USERRECORD-01 WILMINGTON NC US
 Channel 44 ERP 710. kW HAAT 592. m RCAMSL 00606 m
 Latitude 034-07-53 Longitude 0078-11-17
 Status APP Zone 2 Border
 Dir Antenna Make usr Model 00000000WECT44 Beam tilt N Ref Azimuth 0.
 Last update Cutoff date Docket

Cell Size for Service Analysis 2.0 km/side
 Distance Increments for Longley-Rice Analysis 1.00 km

Facility does not meet maximum height/power limits
 Channel 44 ERP = 710.00 HAAT = 592.

Azimuth (Deg)	ERP (kW)	HAAT (m)	41.0 dBu F(50,90) (km)
0.0	414.424	590.0	111.9
45.0	464.107	592.0	113.0
90.0	426.444	597.1	112.5
135.0	214.385	590.6	106.1
180.0	180.351	596.0	104.9
225.0	131.890	591.0	102.0
270.0	59.711	588.8	95.2
315.0	569.363	587.2	114.6

Evaluation toward Class A Stations

Contour overlap to Class A station
 WYBE-CA 44 PINEHURST NC BLTTL 19990811JH

Contour overlap to Class A station
 WZGS-CA 44 RALEIGH NC BDISTTA 20070820ACH

Class A Evaluation Complete

Proposed facility OK to FCC Monitoring Stations
 Proposed facility OK toward West Virginia quite zone
 Proposed facility OK toward Table Mountain
 Proposed facility is beyond the Canadian coordination distance
 Proposed facility is beyond the Mexican coordination distance
 Proposed station is OK toward AM broadcast stations

Start of Interference Analysis

Channel	Call	City/State	ARN
44	WECT	WILMINGTON NC	USERRECORD01

Stations Potentially Affected by Proposed Station

Chan	Call	City/State	Dist(km)	Status	Application	Ref. No.
43	WFXB	MYRTLE BEACH SC	91.8	LIC	BLCT	-20061117ACG
44	WUNG-DT	CONCORD NC	259.9	PLN	DTVPLN	-DTVP1275
44	WYBE-CA	PINEHURST NC	161.0	LIC	BLTTL	-19990811JH
44	WZGS-CA	RALEIGH NC	190.5	APP	BDISTTA	-20070820ACH
44	960628KL	AIKEN SC	348.6	APP	BPET	-19960628KL
44	WJWJ-TV	BEAUFORT SC	280.0	LIC	BLEDT	-20060221AEJ
44	WJWJ-DT	BEAUFORT SC	279.9	PLN	DTVPLN	-DTVP1280
44	WCVW	RICHMOND VA	379.5	LIC	BLEDT	-20050303AAV

44	WCVW-DT	RICHMOND VA	379.5	PLN	DTVPLN	-DTVP1283
45	WJPM-DT	FLORENCE SC	143.9	PLN	DTVPLN	-DTVP1314

%%%

Analysis of Interference to Affected Station 1

NTSC Baseline Analysis

Channel	Call	City/State	Application	Ref. No.
43	WFXB	MYRTLE BEACH SC	DTVPLN	-NPLN1648

Stations Potentially Affecting This Station

Chan	Call	City/State	Dist(km)	Status	Application	Ref. No.
36	WFAY-DT	FAYETTEVILLE NC	78.0	PLN	DTVPLN	-DTVP1025
36	WMMP	CHARLESTON SC	167.5	PLN	DTVPLN	-NPLN1529
42	WTVI	CHARLOTTE NC	184.4	PLN	DTVPLN	-NPLN1623
42	WRAY-DT	WILSON NC	205.5	PLN	DTVPLN	-DTVP1200
43	WLXI-DT	GREENSBORO NC	231.9	PLN	DTVPLN	-DTVP1233
43	WRET-DT	SPARTANBURG SC	253.6	PLN	DTVPLN	-DTVP1242
43	WVBT	VIRGINIA BEACH VA	379.5	PLN	DTVPLN	-NPLN1650
44	WUNG-DT	CONCORD NC	184.1	PLN	DTVPLN	-DTVP1275
44	WUNM-DT	JACKSONVILLE NC	197.1	PLN	DTVPLN	-DTVP1276
45	WJPM-DT	FLORENCE SC	52.5	PLN	DTVPLN	-DTVP1314
46	WWAY-DT	WILMINGTON NC	91.8	PLN	DTVPLN	-DTVP1333
50	WRAZ	RALEIGH NC	175.6	PLN	DTVPLN	-NPLN1777
57	WACH	COLUMBIA SC	167.7	PLN	DTVPLN	-NPLN1884
58	WUNGT	CONCORD NC	184.1	PLN	DTVPLN	-NPLN1895
58	WHMC-DT	CONWAY SC	27.2	PLN	DTVPLN	-DTVP1636

Results for: 43N SC MYRTLE BEACH	DTVPLN	NPLN1648	PLN
	POPULATION	AREA (sq km)	
within Noise Limited Contour	763020	25636.4	
not affected by terrain losses	760108	25592.4	
lost to NTSC IX	0	0.0	
lost to additional IX by ATV	486	4.0	
lost to all IX	486	4.0	

Analysis of current record

Channel	Call	City/State	Application	Ref. No.
43	WFXB	MYRTLE BEACH SC	BLCT	-20061117ACG

Stations Potentially Affecting This Station

Chan	Call	City/State	Dist(km)	Status	Application	Ref. No.
36	WFPX	FAYETTEVILLE NC	78.0	LIC	BLCDT	-20021025AAD
36	WFAY-DT	FAYETTEVILLE NC	78.0	PLN	DTVPLN	-DTVP1025
36	WMMP	CHARLESTON SC	146.7	CP	BPCT	-20040503AAR
42	WTVI	CHARLOTTE NC	184.4	APP	BSTA	-20060810AHT
42	WTVI	CHARLOTTE NC	184.4	APP	BSTA	-20070606AAP
42	WTVI	CHARLOTTE NC	184.4	LIC	BLET	-19920827KG
42	WRAY-TV	WILSON NC	205.5	LIC	BLCDT	-20060609AAX
42	WRAY-DT	WILSON NC	205.5	PLN	DTVPLN	-DTVP1200
43	WLXI-DT	GREENSBORO NC	231.9	PLN	DTVPLN	-DTVP1233
43	WLXI-TV	GREENSBORO NC	195.5	CP MOD	BMPCDT	-20020201AAN
43	WLXI-TV	GREENSBORO NC	195.5	LIC	BLCDT	-20060630ADU
43	WRET-TV	SPARTANBURG SC	253.7	LIC	BLEDT	-20050324ACD
43	WRET-DT	SPARTANBURG SC	253.6	PLN	DTVPLN	-DTVP1242
43	WVBT	VIRGINIA BEACH VA	379.5	LIC	BLCT	-19960531KF
44	WUNG-DT	CONCORD NC	184.1	PLN	DTVPLN	-DTVP1275
44	WECT-TV	WILMINGTON NC	88.9	LIC	BPRM	-20020423ABN
44	WECT	WILMINGTON NC	88.9	LIC	BLCDT	-20040423AAK
45	WJPM-DT	FLORENCE SC	52.5	PLN	DTVPLN	-DTVP1314
46	WWAY-DT	WILMINGTON NC	91.8	PLN	DTVPLN	-DTVP1333
50	WRAZ	RALEIGH NC	175.6	LIC	BLCT	-19950925KE
57	WACH	COLUMBIA SC	145.6	LIC	BLCT	-20030321ABJ
58	WUNG-TV	CONCORD NC	184.1	LIC	BLET	-19921125KF
58	WHMC-DT	CONWAY SC	27.2	PLN	DTVPLN	-DTVP1636
44	WECT	WILMINGTON NC	91.8	APP	USERRECORD-01	

Total scenarios = 6

Result key: 1
Scenario 1 Affected station 1
Before Analysis

Results for: 43N SC MYRTLE BEACH BLCT 20061117ACG LIC
POPULATION AREA (sq km)
within Noise Limited Contour 727622 24400.8
not affected by terrain losses 725373 24368.8
lost to NTSC IX 28 4.0
lost to additional IX by ATV 2373 36.0
lost to all IX 2401 40.0

Potential Interfering Stations Included in above Scenario 1

58N NC CONCORD BLET 19921125KF LIC
36A NC FAYETTEVILLE BLC DT 20021025AAD LIC
43A NC GREENSBORO DTVPLN DTVP1233 PLN
43A SC SPARTANBURG BLEDT 20050324ACD LIC

After Analysis

Results for: 43N SC MYRTLE BEACH BLCT 20061117ACG LIC
POPULATION AREA (sq km)
within Noise Limited Contour 727622 24400.8
not affected by terrain losses 725373 24368.8
lost to NTSC IX 28 4.0
lost to additional IX by ATV 2690 215.9
lost to all IX 2718 219.9

Potential Interfering Stations Included in above Scenario 1

58N NC CONCORD BLET 19921125KF LIC
36A NC FAYETTEVILLE BLC DT 20021025AAD LIC
43A NC GREENSBORO DTVPLN DTVP1233 PLN
43A SC SPARTANBURG BLEDT 20050324ACD LIC
44A NC WILMINGTON USERRECORD01 APP

Percent new IX = 0.0436%

#####

Analysis of Interference to Affected Station 2

DTV Baseline Analysis

Channel	Call	City/State	Application	Ref. No.
44	WUNG-DT	CONCORD NC	DTVPLN	-DTVP1275

Stations Potentially Affecting This Station

Chan	Call	City/State	Dist(km)	Status	Application	Ref. No.
43	WLXI-DT	GREENSBORO NC	101.2	PLN	DTVPLN	-DTVP1233
43	WFXB	MYRTLE BEACH SC	184.1	PLN	DTVPLN	-NPLN1648
43	WRET-DT	SPARTANBURG SC	121.9	PLN	DTVPLN	-DTVP1242
44	WHSG-DT	MONROE GA	359.0	PLN	DTVPLN	-DTVP1259
44	WTSF-DT	ASHLAND KY	375.7	PLN	DTVPLN	-DTVP1264
44	WAGV	HARLAN KY	295.7	PLN	DTVPLN	-NPLN1662
44	WUNM-DT	JACKSONVILLE NC	298.5	PLN	DTVPLN	-DTVP1276
44	WJWJ-DT	BEAUFORT SC	294.2	PLN	DTVPLN	-DTVP1280
44	WCVW-DT	RICHMOND VA	360.1	PLN	DTVPLN	-DTVP1283
45	WASV-DT	ASHEVILLE NC	176.6	PLN	DTVPLN	-DTVP1306
45	WXLVTV	WINSTON-SALEM NC	115.3	PLN	DTVPLN	-NPLN1686
45	WJPM-DT	FLORENCE SC	143.6	PLN	DTVPLN	-DTVP1314

Results for: 44A NC CONCORD DTVPLN DTVP1275 PLN
HAAT 422.0 m, ATV ERP 149.0 kW
POPULATION AREA (sq km)
within Noise Limited Contour 2145661 25560.0
not affected by terrain losses 2136640 25256.6
lost to NTSC IX 8046 59.9

lost to additional IX by ATV	26588	239.6
lost to ATV IX only	31526	247.5
lost to all IX	34634	299.4

NTSC Baseline Analysis

Channel	Call	City/State	Application	Ref. No.
58	WUNGTW	CONCORD NC	DTVPLN	-NPLN1895

Stations Potentially Affecting This Station

Chan	Call	City/State	Dist(km)	Status	Application	Ref. No.
50	WAXN-DT	KANNAPOLIS NC	15.1	PLN	DTVPLN	-DTVP1451
51	WFMY-DT	GREENSBORO NC	89.9	PLN	DTVPLN	-DTVP1484
54	WUNE-DT	LINVILLE NC	136.0	PLN	DTVPLN	-DTVP1551
55	WFVT	ROCK HILL SC	49.4	PLN	DTVPLN	-NPLN1855
57	WHNS-DT	ASHEVILLE NC	189.0	PLN	DTVPLN	-DTVP1610
57	WLFL-DT	RALEIGH NC	167.0	PLN	DTVPLN	-DTVP1611
57	WACH	COLUMBIA SC	150.3	PLN	DTVPLN	-NPLN1884
58	WPGATV	PERRY GA	397.0	PLN	DTVPLN	-NPLN1892
58	WHMC-DT	CONWAY SC	208.1	PLN	DTVPLN	-DTVP1636
58	WJHL-DT	JOHNSON CITY TN	182.1	PLN	DTVPLN	-DTVP1637
58	WTKR-DT	NORFOLK VA	405.9	PLN	DTVPLN	-DTVP1639
59	WUNC-DT	CHAPEL HILL NC	142.1	PLN	DTVPLN	-DTVP1653
59	WYFF-DT	GREENVILLE SC	183.1	PLN	DTVPLN	-DTVP1661
61	WLXITV	GREENSBORO NC	101.2	PLN	DTVPLN	-NPLN1926

Results for: 58N NC CONCORD	DTVPLN	NPLN1895	PLN
	POPULATION	AREA (sq km)	
within Noise Limited Contour	2145626	25556.0	
not affected by terrain losses	2115305	24701.6	
lost to NTSC IX	31270	427.2	
lost to additional IX by ATV	39351	954.2	
lost to all IX	70621	1381.4	

Analysis of current record

Channel	Call	City/State	Application	Ref. No.
44	WUNG-DT	CONCORD NC	DTVPLN	-DTVP1275

Stations Potentially Affecting This Station

Chan	Call	City/State	Dist(km)	Status	Application	Ref. No.
43	WLXI-DT	GREENSBORO NC	101.2	PLN	DTVPLN	-DTVP1233
43	WLXI-TV	GREENSBORO NC	90.8	CP MOD	BMPCDT	-20020201AAN
43	WLXI-TV	GREENSBORO NC	90.8	LIC	BLCDT	-20060630ADU
43	WFXB	MYRTLE BEACH SC	184.1	LIC	BLCT	-20061117ACG
43	WRET-TV	SPARTANBURG SC	121.9	LIC	BLEDT	-20050324ACD
43	WRET-DT	SPARTANBURG SC	121.9	PLN	DTVPLN	-DTVP1242
44	WHSB-TV	MONROE GA	387.3	APP	BPCT	-20020220ABL
44	WHSB-DT	MONROE GA	359.0	PLN	DTVPLN	-DTVP1259
44	WHSB-TV	MONROE GA	387.3	LIC	BLCDT	-20040319AIE
44	WTSF-DT	ASHLAND KY	375.7	PLN	DTVPLN	-DTVP1264
44	WAGV	HARLAN KY	288.5	APP	BMPCT	-19961022KF
44	WAGV	HARLAN KY	295.7	LIC	BLCT	-19990812KE
44	960628KL	AIKEN SC	221.6	APP	BPET	-19960628KL
44	WJWJ-TV	BEAUFORT SC	294.3	LIC	BLEDT	-20060221AEJ
44	WJWJ-DT	BEAUFORT SC	294.2	PLN	DTVPLN	-DTVP1280
44	WCVW	RICHMOND VA	360.1	LIC	BLEDT	-20050303AAV
44	WCVW-DT	RICHMOND VA	360.1	PLN	DTVPLN	-DTVP1283
45	WASV-DT	ASHEVILLE NC	176.6	PLN	DTVPLN	-DTVP1306
45	WYCW	ASHEVILLE NC	176.6	CP	BPCDT	-19991101AGU
45	WXLV-TV	WINSTON-SALEM NC	90.8	APP	BPCT	-20000728AED
45	WXLV-TV	WINSTON-SALEM NC	115.3	LIC	BLCT	-19940926KH
45	WJPM-DT	FLORENCE SC	143.6	PLN	DTVPLN	-DTVP1314
44	WECT	WILMINGTON NC	259.9	APP	USERRECORD-01	

Total scenarios = 216

Result key:	7
Scenario	1 Affected station
Before Analysis	2

Results for: 44A NC CONCORD DTVPLN DTVP1275 PLN
 HAAT 422.0 m, ATV ERP 149.0 kW

	POPULATION	AREA (sq km)
within Noise Limited Contour	2145661	25560.0
not affected by terrain losses	2136640	25256.6
lost to NTSC IX	8046	59.9
lost to additional IX by ATV	25927	191.6
lost to ATV IX only	30865	199.6
lost to all IX	33973	251.5

Potential Interfering Stations Included in above Scenario 1

44N KY HARLAN	BLCT	19990812KE	LIC
45N NC WINSTON-SALEM	BLCT	19940926KH	LIC
43A NC GREENSBORO	DTVPLN	DTV1233	PLN
43A SC SPARTANBURG	BLEDT	20050324ACD	LIC
44A SC BEAUFORT	BLEDT	20060221AEJ	LIC
45A NC ASHEVILLE	DTVPLN	DTV1306	PLN

After Analysis

Results for: 44A NC CONCORD DTVPLN DTVP1275 PLN
 HAAT 422.0 m, ATV ERP 149.0 kW

	POPULATION	AREA (sq km)
within Noise Limited Contour	2145661	25560.0
not affected by terrain losses	2136640	25256.6
lost to NTSC IX	8046	59.9
lost to additional IX by ATV	40382	634.8
lost to ATV IX only	45320	642.8
lost to all IX	48428	694.7

Potential Interfering Stations Included in above Scenario 1

44N KY HARLAN	BLCT	19990812KE	LIC
45N NC WINSTON-SALEM	BLCT	19940926KH	LIC
43A NC GREENSBORO	DTVPLN	DTV1233	PLN
43A SC SPARTANBURG	BLEDT	20050324ACD	LIC
44A SC BEAUFORT	BLEDT	20060221AEJ	LIC
45A NC ASHEVILLE	DTVPLN	DTV1306	PLN
44A NC WILMINGTON	USERRECORD01		APP

Percent new IX = 0.6877%

#####

Analysis of Interference to Affected Station 3

Analysis of current record

Channel	Call	City/State	Application	Ref. No.
44	WYBE-CA	PINEHURST NC	BLTTL	-19990811JH

Stations Potentially Affecting This Station

Chan	Call	City/State	Dist(km)	Status	Application	Ref. No.
36	WFPX	FAYETTEVILLE NC	44.3	LIC	BLCDT	-20021025AAD
36	WFAY-DT	FAYETTEVILLE NC	44.3	PLN	DTVPLN	-DTV1275
42	WRAY-TV	WILSON NC	136.9	LIC	BLCDT	-20060609AAX
42	WRAY-DT	WILSON NC	136.9	PLN	DTVPLN	-DTV1200
43	WLXI-DT	GREENSBORO NC	123.5	PLN	DTVPLN	-DTV1233
43	WLXI-TV	GREENSBORO NC	86.1	CP MOD	BMPCDT	-20020201AAN
43	WLXI-TV	GREENSBORO NC	86.1	LIC	BLCDT	-20060630ADU
43	WFXB	MYRTLE BEACH SC	110.8	LIC	BLCT	-20061117ACG
44	WAGV	HARLAN KY	392.1	APP	BMPCT	-19961022KF
44	WUNG-DT	CONCORD NC	110.1	PLN	DTVPLN	-DTV1275
44	WZGS-CA	RALEIGH NC	93.3	APP	BDISTTA	-20070820ACH
44	WZGS-CA	RALEIGH NC	93.3	STA	BSTA	-20050324AIS
44	WECT-TV	WILMINGTON NC	143.7	LIC	BPRM	-20020423ABN
44	WECT	WILMINGTON NC	143.7	LIC	BLCDT	-20040423AAK
44	960628KL	AIKEN SC	282.7	APP	BPET	-19960628KL
44	WJWJ-TV	BEAUFORT SC	296.5	LIC	BLEDT	-20060221AEJ

44	WJWJ-DT	BEAUFORT SC	296.4	PLN	DTVPLN	-DTVP1280
44	WCVW	RICHMOND VA	307.5	LIC	BLEDT	-20050303AAV
44	WCVW-DT	RICHMOND VA	307.5	PLN	DTVPLN	-DTVP1283
45	WXLV-TV	WINSTON-SALEM NC	86.1	APP	BPCT	-20000728AED
45	WJPM-DT	FLORENCE SC	102.9	PLN	DTVPLN	-DTVP1314
48	WRAL-TV	RALEIGH NC	98.6	CP	BPCDT	-20080319AAE
51	WFMY-TV	GREENSBORO NC	87.0	LIC	BLCDT	-20050628AAB
51	WFMY-DT	GREENSBORO NC	87.0	PLN	DTVPLN	-DTVP1484
52	WTVB-DT	DURHAM NC	97.9	PLN	DTVPLN	-DTVP1515
58	WUNG-TV	CONCORD NC	110.1	LIC	BLET	-19921125KF
58	WHMC-DT	CONWAY SC	138.0	PLN	DTVPLN	-DTVP1636
59	WUNC-DT	CHAPEL HILL NC	81.2	PLN	DTVPLN	-DTVP1653
44	WECT	WILMINGTON NC	161.0	APP	USERRECORD-01	

Total scenarios = 4

Result key: 226
Scenario 4 Affected station 3
Before Analysis

Results for: 44N NC PINEHURST	BLTTL	19990811JH	LIC
	POPULATION	AREA (sq km)	
within Noise Limited Contour	9928	44.0	
not affected by terrain losses	9928	44.0	
lost to NTSC IX	0	0.0	
lost to additional IX by ATV	1700	4.0	
lost to all IX	1700	4.0	

Potential Interfering Stations Included in above Scenario 4

44A NC CONCORD	DTVPLN	DTVP1275	PLN
----------------	--------	----------	-----

After Analysis

Results for: 44N NC PINEHURST	BLTTL	19990811JH	LIC
	POPULATION	AREA (sq km)	
within Noise Limited Contour	9928	44.0	
not affected by terrain losses	9928	44.0	
lost to NTSC IX	0	0.0	
lost to additional IX by ATV	2889	8.0	
lost to all IX	2889	8.0	

Potential Interfering Stations Included in above Scenario 4

44A NC CONCORD	DTVPLN	DTVP1275	PLN
44A NC WILMINGTON	USERRECORD01		APP

The following station failed the de minimis interference criteria.

44D NC WILMINGTON USERRECORD01
ERP 710.00 kW HAAT 592.0 m RCAMSL 606.0 m
Antenna usr 00000000WECT44

Due to interference to the following station and scenario: 4

44N NC PINEHURST BLTTL 19990811JH
ERP 0.83 kW HAAT 108.0 m RCAMSL 207.0 m
Antenna CDB 00000000022617

Percent new DTV interference without proposal:	17.1	BLTTL	19990811JH
Percent new DTV interference with proposal:	29.1	BLTTL	19990811JH

Worst case new IX 11.9762% Scenario 4

Proposed station is MX
44A NC WILMINGTON USERRECORD01 APP

Proposal MX with group in scenario 4 of station 3
#####

Analysis of Interference to Affected Station 4

Analysis of current record

Channel	Call	City/State	Application Ref. No.
44	WZGS-CA	RALEIGH NC	BDISTTA -20070820ACH

Stations Potentially Affecting This Station

Chan	Call	City/State	Dist(km)	Status	Application Ref. No.
36	WFPX	FAYETTEVILLE NC	105.1	LIC	BLCDT -20021025AAD
36	WFAY-DT	FAYETTEVILLE NC	105.1	PLN	DTVPLN -DTVP1025
36	WUNP-TV	ROANOKE RAPIDS NC	97.7	CP	BPEDT -20080317AFL
41	WDRL-DT	DANVILLE VA	104.6	PLN	DTVPLN -DTVP1177
42	WRAY-TV	WILSON NC	52.5	LIC	BLCDT -20060609AAX
42	WRAY-DT	WILSON NC	52.5	PLN	DTVPLN -DTVP1200
43	WLXI-DT	GREENSBORO NC	126.1	PLN	DTVPLN -DTVP1233
43	WLXI-TV	GREENSBORO NC	99.2	CP MOD	BMPCDT -20020201AAN
43	WLXI-TV	GREENSBORO NC	99.2	LIC	BLCDT -20060630ADU
44	WUNG-DT	CONCORD NC	176.8	PLN	DTVPLN -DTVP1275
44	W44CN	GREENVILLE NC	115.4	LIC	BLTT -20061031AAO
44	WECT-TV	WILMINGTON NC	169.1	LIC	BPRM -20020423ABN
44	WECT	WILMINGTON NC	169.1	LIC	BLCDT -20040423AAK
44	960628KL	AIKEN SC	374.2	APP	BPET -19960628KL
44	WJWJ-TV	BEAUFORT SC	386.1	LIC	BLEDT -20060221AEJ
44	WJWJ-DT	BEAUFORT SC	386.0	PLN	DTVPLN -DTVP1280
44	WCVW	RICHMOND VA	216.5	LIC	BLEDT -20050303AAV
44	WCVW-DT	RICHMOND VA	216.5	PLN	DTVPLN -DTVP1283
45	WXLV-TV	WINSTON-SALEM NC	99.2	APP	BPCT -20000728AED
47	WRPX	ROCKY MOUNT NC	59.7	LIC	BLCT -19960709KN
48	WMYV	GREENSBORO NC	99.2	LIC	BLCT -20020607ABJ
48	WRAL-TV	RALEIGH NC	21.9	CP	BPCDT -20080319AAE
51	WFMY-TV	GREENSBORO NC	100.7	LIC	BLCDT -20050628AAB
51	WFMY-DT	GREENSBORO NC	100.7	PLN	DTVPLN -DTVP1484
51	WEPX	GREENVILLE NC	125.7	APP	BPRM -20040322AHL
51	WEPX	GREENVILLE NC	125.7	CP	BPCDT -20080317ABS
52	WTV-DT	DURHAM NC	22.0	PLN	DTVPLN -DTVP1515
59	WUNC-DT	CHAPEL HILL NC	40.6	PLN	DTVPLN -DTVP1653
44	WECT	WILMINGTON NC	190.5	APP	USERRECORD-01

Total scenarios = 1

Result key: 227

Scenario 1 Affected station 4

Before Analysis

Results for: 44N NC RALEIGH	BDISTTA	20070820ACH	APP
	POPULATION	AREA (sq km)	
within Noise Limited Contour	403315	1728.9	
not affected by terrain losses	403315	1728.9	
lost to NTSC IX	0	0.0	
lost to additional IX by ATV	532	4.0	
lost to all IX	532	4.0	

Potential Interfering Stations Included in above Scenario 1

48A NC RALEIGH BPCDT 20080319AAE CP

After Analysis

Results for: 44N NC RALEIGH	BDISTTA	20070820ACH	APP
	POPULATION	AREA (sq km)	
within Noise Limited Contour	403315	1728.9	
not affected by terrain losses	403315	1728.9	
lost to NTSC IX	0	0.0	
lost to additional IX by ATV	1666	16.1	
lost to all IX	1666	16.1	

Potential Interfering Stations Included in above Scenario 1

48A NC RALEIGH	BPCDT	20080319AAE	CP
44A NC WILMINGTON	USERRECORD01		APP

Percent new IX = 0.2812%
Worst case new IX 0.2812% Scenario 1
#####

Analysis of Interference to Affected Station 5

Analysis of current record

Channel	Call	City/State	Application	Ref. No.
44	960628KL	AIKEN SC	BPET	-19960628KL

Stations Potentially Affecting This Station

Chan	Call	City/State	Dist(km)	Status	Application	Ref. No.
36	WCES-DT	WRENS GA	57.9	PLN	DTVPLN	-DTVP1009
41	WIS -DT	COLUMBIA SC	118.5	PLN	DTVPLN	-DTVP1173
42	WJBF-DT	AUGUSTA GA	32.4	PLN	DTVPLN	-DTVP1189
42	WJBF	AUGUSTA GA	32.4	LIC	BLCDT	-20060615AAV
43	WRET-TV	SPARTANBURG SC	133.8	LIC	BLEDT	-20050324ACD
43	WRET-DT	SPARTANBURG SC	133.7	PLN	DTVPLN	-DTVP1242
44	WGIQ	LOUISVILLE AL	394.1	LIC	BLEDT	-20031121ANL
44	WGIQ-DT	LOUISVILLE AL	394.1	PLN	DTVPLN	-DTVP1252
44	WJEB-TV	JACKSONVILLE FL	380.6	CP	BPEDT	-20080314ABX
44	WJEB-DT	JACKSONVILLE FL	380.6	PLN	DTVPLN	-DTVP1258
44	WJEB-TV	JACKSONVILLE FL	380.6	APP	BPET	-20020523AAR
44	WJEB-TV	JACKSONVILLE FL	380.6	LIC	BLEDT	-20060313AEB
44	WHSB-TV	MONROE GA	224.9	APP	BPCT	-20020220ABL
44	WHSB-DT	MONROE GA	192.0	PLN	DTVPLN	-DTVP1259
44	WHSB-TV	MONROE GA	224.9	LIC	BLCDT	-20040319AIE
44	WAGV	HARLAN KY	366.3	APP	BMPCT	-19961022KF
44	WAGV	HARLAN KY	370.2	LIC	BLCT	-19990812KE
44	WUNG-DT	CONCORD NC	221.6	PLN	DTVPLN	-DTVP1275
44	WECT-TV	WILMINGTON NC	348.1	LIC	BPRM	-20020423ABN
44	WECT	WILMINGTON NC	348.1	LIC	BLCDT	-20040423AAK
44	WJWJ-TV	BEAUFORT SC	158.7	LIC	BLEDT	-20060221AEJ
44	WJWJ-DT	BEAUFORT SC	158.7	PLN	DTVPLN	-DTVP1280
45	WMAZ-DT	MACON GA	183.7	PLN	DTVPLN	-DTVP1294
45	WASV-DT	ASHEVILLE NC	180.0	PLN	DTVPLN	-DTVP1306
45	WYCW	ASHEVILLE NC	180.0	CP	BPCDT	-19991101AGU
47	WZRB	COLUMBIA SC	94.7	LIC	BLCT	-20050110ABA
47	WZRB	COLUMBIA SC	94.7	APP	BPCDT	-20080317AIR
48	WACH	COLUMBIA SC	117.6	LIC	BLCDT	-20021204ABB
48	WACH-DT	COLUMBIA SC	94.7	PLN	DTVPLN	-DTVP1400
51	WFXG-DT	AUGUSTA GA	31.2	PLN	DTVPLN	-DTVP1474
58	WPGA-TV	PERRY GA	183.8	LIC	BLCT	-19950629KK
44	WECT	WILMINGTON NC	348.6	APP	USERRECORD-01	

Proposal causes no interference

#####

Analysis of Interference to Affected Station 6

DTV Baseline Analysis

Channel	Call	City/State	Application	Ref. No.
44	WJWJ-DT	BEAUFORT SC	DTVPLN	-DTVP1280

Stations Potentially Affecting This Station

Chan	Call	City/State	Dist(km)	Status	Application	Ref. No.
43	WFXB	MYRTLE BEACH SC	214.9	PLN	DTVPLN	-NPLN1648
44	WJEB-DT	JACKSONVILLE FL	283.4	PLN	DTVPLN	-DTVP1258
44	WHSB-DT	MONROE GA	329.4	PLN	DTVPLN	-DTVP1259
44	WGVP	VALDOSTA GA	305.7	PLN	DTVPLN	-NPLN1657
44	WUNG-DT	CONCORD NC	294.2	PLN	DTVPLN	-DTVP1275
44	WUNM-DT	JACKSONVILLE NC	407.2	PLN	DTVPLN	-DTVP1276
45	WJPM-DT	FLORENCE SC	194.6	PLN	DTVPLN	-DTVP1314

Results for: 44A SC BEAUFORT DTVPLN DTVP1280 PLN
HAAT 390.0 m, ATV ERP 50.0 kW
POPULATION AREA (sq km)
within Noise Limited Contour 670305 19731.2
not affected by terrain losses 670305 19731.2

lost to NTSC IX	0	0.0
lost to additional IX by ATV	0	0.0
lost to ATV IX only	0	0.0
lost to all IX	0	0.0

NTSC Baseline Analysis

Channel	Call	City/State	Application	Ref. No.
16	WJWJTV	BEAUFORT SC	DTVPLN	-NPLN0966

Stations Potentially Affecting This Station

Chan	Call	City/State	Dist(km)	Status	Application	Ref. No.
14	WEBATV	ALLENDALE SC	85.3	PLN	DTVPLN	-NPLN0901
15	WTOC-DT	SAVANNAH GA	96.5	PLN	DTVPLN	-DTVP0167
16	WCJB-DT	GAINESVILLE FL	389.1	PLN	DTVPLN	-DTVP0209
16	WGXA-DT	MACON GA	269.3	PLN	DTVPLN	-DTVP0212
16	WAAP	BURLINGTON NC	376.6	PLN	DTVPLN	-NPLN0958
16	WPDE-DT	FLORENCE SC	222.2	PLN	DTVPLN	-DTVP0240
16	WGGSTV	GREENVILLE SC	294.8	PLN	DTVPLN	-NPLN0967
17	WLTX-DT	COLUMBIA SC	154.1	PLN	DTVPLN	-DTVP0280
23	WJCL-DT	SAVANNAH GA	95.4	PLN	DTVPLN	-DTVP0519
23	WHMC	CONWAY SC	200.7	PLN	DTVPLN	-NPLN1190
24	WTATTV	CHARLESTON SC	95.4	PLN	DTVPLN	-NPLN1224
30	WAGT-DT	AUGUSTA GA	133.6	PLN	DTVPLN	-DTVP0782
31	WRDW-DT	AUGUSTA GA	133.1	PLN	DTVPLN	-DTVP0819

Results for: 16N SC BEAUFORT	DTVPLN	NPLN0966	PLN
	POPULATION	AREA (sq km)	
within Noise Limited Contour	670305	19731.2	
not affected by terrain losses	670305	19727.1	
lost to NTSC IX	218	84.3	
lost to additional IX by ATV	6061	228.8	
lost to all IX	6279	313.1	

Analysis of current record

Channel	Call	City/State	Application	Ref. No.
44	WJWJ-TV	BEAUFORT SC	BLEDT	-20060221AEJ

Stations Potentially Affecting This Station

Chan	Call	City/State	Dist(km)	Status	Application	Ref. No.
43	WFXB	MYRTLE BEACH SC	215.1	LIC	BLCT	-20061117ACG
44	WJEB-TV	JACKSONVILLE FL	283.3	CP	BPEDT	-20080314ABX
44	WJEB-DT	JACKSONVILLE FL	283.4	PLN	DTVPLN	-DTVP1258
44	WJEB-TV	JACKSONVILLE FL	283.4	APP	BPET	-20020523AAR
44	WJEB-TV	JACKSONVILLE FL	283.4	LIC	BLEDT	-20060313AEB
44	WHSG-TV	MONROE GA	360.7	APP	BPCT	-20020220ABL
44	WHSG-DT	MONROE GA	329.3	PLN	DTVPLN	-DTVP1259
44	WHSG-TV	MONROE GA	360.7	LIC	BLCDT	-20040319AIE
44	WUNG-DT	CONCORD NC	294.3	PLN	DTVPLN	-DTVP1275
44	960628KL	AIKEN SC	158.7	APP	BPET	-19960628KL
45	WJPM-DT	FLORENCE SC	194.7	PLN	DTVPLN	-DTVP1314
44	WECT	WILMINGTON NC	280.0	APP	USERRECORD-01	

Proposal causes no interference

#####

Analysis of Interference to Affected Station 7

Analysis of current record

Channel	Call	City/State	Application	Ref. No.
44	WJWJ-DT	BEAUFORT SC	DTVPLN	-DTVP1280

Stations Potentially Affecting This Station

Chan	Call	City/State	Dist(km)	Status	Application	Ref. No.
43	WFXB	MYRTLE BEACH SC	214.9	LIC	BLCT	-20061117ACG
44	WJEB-TV	JACKSONVILLE FL	283.4	CP	BPEDT	-20080314ABX
44	WJEB-DT	JACKSONVILLE FL	283.4	PLN	DTVPLN	-DTVP1258
44	WJEB-TV	JACKSONVILLE FL	283.4	APP	BPET	-20020523AAR
44	WJEB-TV	JACKSONVILLE FL	283.4	LIC	BLEDT	-20060313AEB

44	WHSB-TV	MONROE GA	360.8	APP	BPCT	-20020220ABL
44	WHSB-DT	MONROE GA	329.4	PLN	DTVPLN	-DTVP1259
44	WHSB-TV	MONROE GA	360.8	LIC	BLCDT	-20040319AIE
44	WUNG-DT	CONCORD NC	294.2	PLN	DTVPLN	-DTVP1275
44	960628KL	AIKEN SC	158.7	APP	BPET	-19960628KL
45	WJPM-DT	FLORENCE SC	194.6	PLN	DTVPLN	-DTVP1314
44	WECT	WILMINGTON NC	279.9	APP	USERRECORD-01	

Proposal causes no interference

#####

Analysis of Interference to Affected Station 8

DTV Baseline Analysis

Channel	Call	City/State	Application	Ref. No.
44	WCVW-DT	RICHMOND VA	DTVPLN	-DTVP1283

Stations Potentially Affecting This Station

Chan	Call	City/State	Dist(km)	Status	Application	Ref. No.
43	WVVI-DT	MANASSAS VA	143.7	PLN	DTVPLN	-DTVP1249
43	WVBT	VIRGINIA BEACH VA	123.5	PLN	DTVPLN	-NPLN1650
44	WDPB-DT	SEAFORD DE	215.4	PLN	DTVPLN	-DTVP1256
44	WWPB-DT	HAGERSTOWN MD	239.8	PLN	DTVPLN	-DTVP1267
44	WUNG-DT	CONCORD NC	360.1	PLN	DTVPLN	-DTVP1275
44	WUNM-DT	JACKSONVILLE NC	268.7	PLN	DTVPLN	-DTVP1276
45	WBFF	BALTIMORE MD	219.0	PLN	DTVPLN	-NPLN1682

Results for: 44A VA RICHMOND DTVPLN DTVP1283 PLN

HAAT 293.0 m, ATV ERP 50.0 kW

	POPULATION	AREA (sq km)
within Noise Limited Contour	945122	13908.4
not affected by terrain losses	945122	13908.4
lost to NTSC IX	0	0.0
lost to additional IX by ATV	0	0.0
lost to ATV IX only	0	0.0
lost to all IX	0	0.0

NTSC Baseline Analysis

Channel	Call	City/State	Application	Ref. No.
57	WCVW	RICHMOND VA	DTVPLN	-NPLN1886

Stations Potentially Affecting This Station

Chan	Call	City/State	Dist(km)	Status	Application	Ref. No.
49	WJCB	NORFOLK VA	124.8	PLN	DTVPLN	-NPLN1764
50	WBDCTV	WASHINGTON DC	168.7	PLN	DTVPLN	-NPLN1771
54	WWBT-DT	RICHMOND VA	8.7	PLN	DTVPLN	-DTVP1557
55	NEW	HAMPTON VA	124.7	PLN	DTVPLN	-NPLN1858
56	WCPB-DT	SALISBURY MD	201.1	PLN	DTVPLN	-DTVP1584
56	WNVC	FAIRFAX VA	154.9	PLN	DTVPLN	-NPLN1873
56	WSET-DT	LYNCHBURG VA	180.8	PLN	DTVPLN	-DTVP1597
57	WLFL-DT	RALEIGH NC	227.4	PLN	DTVPLN	-DTVP1611
57	WTOV-DT	STEUBENVILLE OH	394.8	PLN	DTVPLN	-DTVP1615
57	WHTM-DT	HARRISBURG PA	316.6	PLN	DTVPLN	-DTVP1616
57	WPSG	PHILADELPHIA PA	347.6	PLN	DTVPLN	-NPLN1883
57	WNVC-DT	FAIRFAX VA	154.9	PLN	DTVPLN	-DTVP1619
58	WTKR-DT	NORFOLK VA	126.9	PLN	DTVPLN	-DTVP1639
64	NEW	CHARLOTTESVILLE VA	100.3	PLN	DTVPLN	-NPLN1968
65	WAWB	ASHLAND VA	39.8	PLN	DTVPLN	-NPLN1975

Results for: 57N VA RICHMOND DTVPLN NPLN1886 PLN

	POPULATION	AREA (sq km)
within Noise Limited Contour	945122	13908.4
not affected by terrain losses	945088	13900.3
lost to NTSC IX	99	28.2
lost to additional IX by ATV	4063	382.9
lost to all IX	4162	411.1

Analysis of current record

Channel	Call	City/State	Application	Ref. No.
---------	------	------------	-------------	----------

44 WCVW RICHMOND VA BLEDT -20050303AAV

Stations Potentially Affecting This Station

Chan	Call	City/State	Dist(km)	Status	Application	Ref. No.
43	WPXW	MANASSAS VA	143.7	LIC	BLCDT	-20010425ABG
43	WVVI-DT	MANASSAS VA	143.7	PLN	DTVPLN	-DTVP1249
43	WPXW	MANASSAS VA	143.7	APP	BPCT	-20011214AAQ
43	WVBT	VIRGINIA BEACH VA	123.4	LIC	BLCT	-19960531KF
44	WDPB	SEAFORD DE	215.4	LIC	BLEDT	-20050624AAK
44	WDPB-DT	SEAFORD DE	215.4	PLN	DTVPLN	-DTVP1256
44	WWPB-DT	HAGERSTOWN MD	239.9	PLN	DTVPLN	-DTVP1267
44	WUNG-DT	CONCORD NC	360.1	PLN	DTVPLN	-DTVP1275
44	WWAC-TV	ATLANTIC CITY NJ	320.0	LIC	BPRM	-20000724ACE
44	WMCN-TV	ATLANTIC CITY NJ	343.4	LIC	BLCDT	-20060707ACS
45	WBFF	BALTIMORE MD	219.0	CP MOD	BMPCT	-20030116AAX
44	WECT	WILMINGTON NC	379.5	APP	USERRECORD-01	

Proposal causes no interference

#####

Analysis of Interference to Affected Station 9

Analysis of current record

Channel	Call	City/State	Application	Ref. No.
44	WCVW-DT	RICHMOND VA	DTVPLN	-DTVP1283

Stations Potentially Affecting This Station

Chan	Call	City/State	Dist(km)	Status	Application	Ref. No.
43	WPXW	MANASSAS VA	143.7	LIC	BLCDT	-20010425ABG
43	WVVI-DT	MANASSAS VA	143.7	PLN	DTVPLN	-DTVP1249
43	WPXW	MANASSAS VA	143.7	APP	BPCT	-20011214AAQ
43	WVBT	VIRGINIA BEACH VA	123.5	LIC	BLCT	-19960531KF
44	WDPB	SEAFORD DE	215.4	LIC	BLEDT	-20050624AAK
44	WDPB-DT	SEAFORD DE	215.4	PLN	DTVPLN	-DTVP1256
44	WWPB-DT	HAGERSTOWN MD	239.8	PLN	DTVPLN	-DTVP1267
44	WUNG-DT	CONCORD NC	360.1	PLN	DTVPLN	-DTVP1275
44	WWAC-TV	ATLANTIC CITY NJ	320.0	LIC	BPRM	-20000724ACE
44	WMCN-TV	ATLANTIC CITY NJ	343.4	LIC	BLCDT	-20060707ACS
45	WBFF	BALTIMORE MD	219.0	CP MOD	BMPCT	-20030116AAX
44	WECT	WILMINGTON NC	379.5	APP	USERRECORD-01	

Proposed station is beyond the site to
nearest cell evaluation distance

#####

Analysis of Interference to Affected Station 10

DTV Baseline Analysis

Channel	Call	City/State	Application	Ref. No.
45	WJPM-DT	FLORENCE SC	DTVPLN	-DTVP1314

Stations Potentially Affecting This Station

Chan	Call	City/State	Dist(km)	Status	Application	Ref. No.
44	WUNG-DT	CONCORD NC	143.6	PLN	DTVPLN	-DTVP1275
44	WJWJ-DT	BEAUFORT SC	194.6	PLN	DTVPLN	-DTVP1280
45	WMAZ-DT	MACON GA	392.1	PLN	DTVPLN	-DTVP1294
45	WASV-DT	ASHEVILLE NC	276.8	PLN	DTVPLN	-DTVP1306
45	WXLVTV	WINSTON-SALEM NC	239.9	PLN	DTVPLN	-NPLN1686
46	WJZY	BELMONT NC	176.3	PLN	DTVPLN	-NPLN1704
46	WWAY-DT	WILMINGTON NC	144.0	PLN	DTVPLN	-DTVP1333

Results for: 45A SC FLORENCE

DTVPLN

DTVP1314

PLN

HAAT 241.0 m, ATV ERP 50.0 kW

	POPULATION	AREA (sq km)
within Noise Limited Contour	382328	12395.7
not affected by terrain losses	382328	12395.7
lost to NTSC IX	95	16.0
lost to additional IX by ATV	0	0.0

lost to ATV IX only	0	4.0
lost to all IX	95	16.0

NTSC Baseline Analysis

Channel	Call	City/State	Application	Ref. No.
33	WJPM-TV	FLORENCE SC	DTVPLN	-NPLN1458

Stations Potentially Affecting This Station

Chan	Call	City/State	Dist(km)	Status	Application	Ref. No.
25	WUNU-DT	LUMBERTON NC	86.1	PLN	DTVPLN	-DTVP0609
25	WOLOTV	COLUMBIA SC	116.4	PLN	DTVPLN	-NPLN1257
26	WSFXTV	WILMINGTON NC	144.0	PLN	DTVPLN	-NPLN1282
30	WNSCTV	ROCK HILL SC	132.3	PLN	DTVPLN	-NPLN1391
31	WUNU	LUMBERTON NC	86.1	PLN	DTVPLN	-NPLN1411
32	WRLK-DT	COLUMBIA SC	111.1	PLN	DTVPLN	-DTVP0880
33	WUNFTV	ASHEVILLE NC	302.9	PLN	DTVPLN	-NPLN1453
33	WUPN-DT	GREENSBORO NC	177.0	PLN	DTVPLN	-DTVP0908
33	WEBA-DT	ALLENDALE SC	195.3	PLN	DTVPLN	-DTVP0917
33	WTVZ	NORFOLK VA	406.0	PLN	DTVPLN	-NPLN1460
34	WSOC-DT	CHARLOTTE NC	141.3	PLN	DTVPLN	-DTVP0943
35	WRLKTV	COLUMBIA SC	111.1	PLN	DTVPLN	-NPLN1507
36	WFAY-DT	FAYETTEVILLE NC	90.9	PLN	DTVPLN	-DTVP1025
40	WKFT	FAYETTEVILLE NC	153.8	PLN	DTVPLN	-NPLN1588
41	WIS -DT	COLUMBIA SC	94.7	PLN	DTVPLN	-DTVP1173
48	WUPNTV	GREENSBORO NC	177.0	PLN	DTVPLN	-NPLN1734
48	WACH-DT	COLUMBIA SC	118.3	PLN	DTVPLN	-DTVP1400

Results for: 33N SC FLORENCE	DTVPLN	NPLN1458	PLN
	POPULATION	AREA (sq km)	
within Noise Limited Contour	382328	12395.7	
not affected by terrain losses	382217	12379.7	
lost to NTSC IX	2950	259.6	
lost to additional IX by ATV	2156	123.8	
lost to all IX	5106	383.4	

Analysis of current record

Channel	Call	City/State	Application	Ref. No.
45	WJPM-DT	FLORENCE SC	DTVPLN	-DTVP1314

Stations Potentially Affecting This Station

Chan	Call	City/State	Dist(km)	Status	Application	Ref. No.
44	WUNG-DT	CONCORD NC	143.6	PLN	DTVPLN	-DTVP1275
44	960628KL	AIKEN SC	211.9	APP	BPET	-19960628KL
44	WJWJ-TV	BEAUFORT SC	194.7	LIC	BLDT	-20060221AEJ
44	WJWJ-DT	BEAUFORT SC	194.6	PLN	DTVPLN	-DTVP1280
45	WMAZ-DT	MACON GA	392.1	PLN	DTVPLN	-DTVP1294
45	WASV-DT	ASHEVILLE NC	276.8	PLN	DTVPLN	-DTVP1306
45	WYCW	ASHEVILLE NC	276.8	CP	BPCDT	-19991101AGU
45	WXLV-TV	WINSTON-SALEM NC	176.7	APP	BPCT	-20000728AED
45	WXLV-TV	WINSTON-SALEM NC	239.9	LIC	BLCT	-19940926KH
46	WJZY	BELMONT NC	176.3	LIC	BLCT	-19870320KU
46	WWAY-DT	WILMINGTON NC	144.0	PLN	DTVPLN	-DTVP1333
44	WECT	WILMINGTON NC	143.9	APP	USERRECORD-01	

Proposal causes no interference

#####

Analysis of Interference to Affected Station 11

Analysis of current record

Channel	Call	City/State	Application	Ref. No.
44	WECT	WILMINGTON NC	USERRECORD-01	

Stations Potentially Affecting This Station

Chan	Call	City/State	Dist(km)	Status	Application	Ref. No.
43	WFXB	MYRTLE BEACH SC	91.8	LIC	BLCT	-20061117ACG
44	WUNG-DT	CONCORD NC	259.9	PLN	DTVPLN	-DTVP1275
44	960628KL	AIKEN SC	348.6	APP	BPET	-19960628KL

44	WJWJ-TV	BEAUFORT SC	280.0	LIC	BLEDT	-20060221AEJ
44	WJWJ-DT	BEAUFORT SC	279.9	PLN	DTVPLN	-DTVP1280
44	WCVW	RICHMOND VA	379.5	LIC	BLEDT	-20050303AAV
44	WCVW-DT	RICHMOND VA	379.5	PLN	DTVPLN	-DTVP1283
45	WJPM-DT	FLORENCE SC	143.9	PLN	DTVPLN	-DTVP1314

Total scenarios = 1

Result key: 228
Scenario 1 Affected station 11
Before Analysis

Results for: 44A NC WILMINGTON USERRECORD01 APP
HAAT 592.0 m, ATV ERP 710.0 kW

	POPULATION	AREA (sq km)
within Noise Limited Contour	752771	37329.9
not affected by terrain losses	752771	37329.9
lost to NTSC IX	62	8.0
lost to additional IX by ATV	19	4.0
lost to ATV IX only	19	4.0
lost to all IX	81	12.0

Potential Interfering Stations Included in above Scenario 1

43N SC MYRTLE BEACH	BLCT	20061117ACG	LIC
44A NC CONCORD	DTVPLN	DTVP1275	PLN

#####

FINISHED FINISHED FINISHED FINISHED FINISHED FINISHED

WYBE-CA PRE-TRANSITION INTERFERENCE RECEIVED "BEFORE" STUDY

Census data selected: 1990

TV INTERFERENCE and SPACING ANALYSIS PROGRAM

Date: 04-22-2008 Time: 14:33:26

Record Selected for Analysis

WYBE-CA BLTTL -19990811JH PINEHURST NC US
Channel 44 ERP 0.826 kW HAAT 00108 m RCAMSL 00207 m
Latitude 035-09-57 Longitude 0079-25-12
Status LIC Zone Border Offset -
Dir Antenna Make CDB Model 00000000022617 Beam tilt N Ref Azimuth 0.0
Last update 00000000 Cutoff date 00000000 Docket
Comments
Applicant MULTIMEDIA NETWORK OF NC, INC

Cell Size for Service Analysis 1.0 km/side

Distance Increments for Longley-Rice Analysis 1.00 km

Not full service station

Facility meets maximum power limit

Azimuth (Deg)	ERP (kW)	HAAT (m)	74.0 dBu F(50,50) (km)
0.0	0.078	70.2	3.6
45.0	0.181	101.6	5.4
90.0	0.000	93.9	1.0
135.0	0.000	94.2	1.0
180.0	0.000	98.9	1.0
225.0	0.000	93.8	1.0
270.0	0.034	66.0	2.9
315.0	0.392	67.7	5.4

Evaluation from Class A Station

Station inside contour of station

WLXI-TV 43 GREENSBORO NC BMPCDT 20020201AAN

Station inside contour of station

WLXI-TV 43 GREENSBORO NC BLCDT 20060630ADU

Contour overlap to station

WUNG-TV 44 CONCORD NC BLEDT 20010814ABF

Contour overlap to station

WUNG-DT 44 CONCORD NC DTVPLN DTVP1275

Contour overlap to station

WXLV-TV 45 WINSTON-SALEM NC BPCT 20000728AED

Contour Overlap Evaluation from Class A Complete

Contour Overlap Evaluation from LPTV Station to LPTV Stations

No Spacing violations or contour overlap from LPTV station

Contour Overlap Evaluation from LPTV to LPTV Stations Complete

Contour Overlap to Proposed Station

Station

WUNG-TV 44 CONCORD NC BLEDT20010814ABF causes

Contour overlap to Class A station

WYBE-CA 44 PINEHURST NC BLTTL 19990811JH

Station
WZGS-CA 44 RALEIGH NC BSTA20050324AIS causes
Contour overlap to station
WYBE-CA 44 PINEHURST NC BLTTL 19990811JH

Station
WECT 44 WILMINGTON NC BLCDDT20040423AAK causes
Contour overlap to Class A station
WYBE-CA 44 PINEHURST NC BLTTL 19990811JH

Contour Overlap Evaluation to Proposed Station Complete

Proposed facility OK to FCC Monitoring Stations
Proposed facility OK toward West Virginia quiet zone
Proposed facility OK toward Table Mountain
Proposed facility is beyond the Canadian coordination distance
Proposed facility is beyond the Mexican coordination distance
Proposed station is OK toward AM broadcast stations

Start of Interference Analysis

Channel	Call	City/State	ARN
44	WYBE-CA	PINEHURST NC	BLTTL 19990811JH

Stations Potentially Affected by Proposed Station

Chan	Call	City/State	Dist(km)	Status	Application	Ref. No.
43	WLXI-TV	GREENSBORO NC	86.1	CP MOD	BMPCDT	-20020201AAN
43	WLXI-TV	GREENSBORO NC	86.1	LIC	BLCDDT	-20060630ADU
44	WUNG-TV	CONCORD NC	110.1	LIC	BLEDDT	-20010814ABF
44	WUNG-DT	CONCORD NC	110.1	PLN	DTVPLN	-DTVP1275
45	WXLV-TV	WINSTON-SALEM NC	86.1	APP	BPCT	-20000728AED

%%%

Analysis of Interference to Affected Station 6

Analysis of current record

Channel	Call	City/State	Application	Ref. No.
44	WYBE-CA	PINEHURST NC	BLTTL	-19990811JH

Stations Potentially Affecting This Station

Chan	Call	City/State	Dist(km)	Status	Application	Ref. No.
36	WFPX	FAYETTEVILLE NC	44.3	LIC	BLCDDT	-20021025AAD
36	WFAY-DT	FAYETTEVILLE NC	44.3	PLN	DTVPLN	-DTVP1025
42	WRAY-TV	WILSON NC	136.9	LIC	BLCDDT	-20060609AAX
42	WRAY-DT	WILSON NC	136.9	PLN	DTVPLN	-DTVP1200
43	WLXI-DT	GREENSBORO NC	123.5	PLN	DTVPLN	-DTVP1233
43	WLXI-TV	GREENSBORO NC	86.1	CP MOD	BMPCDT	-20020201AAN
43	WLXI-TV	GREENSBORO NC	86.1	LIC	BLCDDT	-20060630ADU
43	WFXB	MYRTLE BEACH SC	110.8	LIC	BLCT	-20061117ACG
44	WAGV	HARLAN KY	392.1	APP	BMPCT	-19961022KF
44	WUNG-DT	CONCORD NC	110.1	PLN	DTVPLN	-DTVP1275
44	WZGS-CA	RALEIGH NC	93.3	APP	BDISTTA	-20070820ACH
44	WZGS-CA	RALEIGH NC	93.3	STA	BSTA	-20050324AIS
44	W66BU	SYLVA NC	355.8	CP	BDISDTT	-20060316ACR
44	WECT-TV	WILMINGTON NC	143.7	LIC	BPRM	-20020423ABN
44	WECT	WILMINGTON NC	143.7	LIC	BLCDDT	-20040423AAK
44	960628KL	AIKEN SC	282.7	APP	BPET	-19960628KL
44	WJWJ-TV	BEAUFORT SC	296.5	LIC	BLEDDT	-20060221AEJ

44	WJWJ-DT	BEAUFORT SC	296.4	PLN	DTVPLN	-DTVP1280
44	WJDG-LD	GRUNDY VA	260.3	CP	BDCCDTL	-20061025ADU
44	WCVW	RICHMOND VA	307.5	LIC	BLEDT	-20050303AAV
44	WCVW-DT	RICHMOND VA	307.5	PLN	DTVPLN	-DTVP1283
45	W16CF	CHARLOTTE NC	115.4	CP	BDISDTT	-20060327ACD
45	W63CW	GOLDSBORO NC	127.9	CP	BDISDTT	-20071128ANQ
45	W63CW	GOLDSBORO NC	127.9	APP	BDISDTT	-20060328AKA
45	NEW	RALEIGH NC	98.6	APP	BSFDTL	-20060630AJL
45	W45CN	ROCKY MOUNT NC	165.6	CP	BDFCDTT	-20060330ACW
45	WXLV-TV	WINSTON-SALEM NC	86.1	APP	BPCT	-20000728AED
45	WJPM-DT	FLORENCE SC	102.9	PLN	DTVPLN	-DTVP1314
48	WRAL-TV	RALEIGH NC	98.6	CP	BPCDT	-20080319AAE
51	WFMY-TV	GREENSBORO NC	87.0	LIC	BLCDT	-20050628AAB
51	WFMY-DT	GREENSBORO NC	87.0	PLN	DTVPLN	-DTVP1484
52	WTV-DT	DURHAM NC	97.9	PLN	DTVPLN	-DTVP1515
58	WUNG-TV	CONCORD NC	110.1	LIC	BLET	-19921125KF
58	WHMC-DT	CONWAY SC	138.0	PLN	DTVPLN	-DTVP1636
59	WUNC-DT	CHAPEL HILL NC	81.2	PLN	DTVPLN	-DTVP1653

Total scenarios = 2

Result key: 1
 Scenario 1 Affected station 6 WYBE-CA
 Before Analysis

Results for: 44N NC PINEHURST	BLTTL	19990811JH	LIC
	POPULATION	AREA (sq km)	
within Noise Limited Contour	7519	36.9	
not affected by terrain losses	7519	36.9	
lost to NTSC IX	2210	3.0	
lost to additional IX by ATV	595	5.0	
lost to all IX	2805	8.0	

Potential Interfering Stations Included in above Scenario 1

44N NC RALEIGH	BSTA	20050324AIS	STA
44A NC CONCORD	DTVPLN	DTVP1275	PLN
44A NC WILMINGTON	BLCDT	20040423AAK	LIC

Result key: 2
 Scenario 2 Affected station 6 WYBE-CA
 Before Analysis

Results for: 44N NC PINEHURST	BLTTL	19990811JH	LIC
	POPULATION	AREA (sq km)	
within Noise Limited Contour	7519	36.9	
not affected by terrain losses	7519	36.9	
lost to NTSC IX	0	0.0	
lost to additional IX by ATV	2292	7.0	
lost to all IX	2292	7.0	

Potential Interfering Stations Included in above Scenario 2

44A NC CONCORD	DTVPLN	DTVP1275	PLN
44A NC WILMINGTON	BLCDT	20040423AAK	LIC

Proposal fails scenario	1	received IX increased to	37.3%
Proposal fails scenario	2	received IX increased to	30.5%

Proposed station is MX
 44N NC PINEHURST BLTTL 19990811JH LIC

Proposal MX with group in scenario 1 of station 6

Proposed station is MX
44N NC PINEHURST BLTTL 19990811JH LIC

Proposal MX with group in scenario 2 of station 6
#####

FINISHED FINISHED FINISHED FINISHED FINISHED FINISHED

WYBE-CA PRE-TRANSITION INTERFERENCE RECEIVED "AFTER" STUDY

Census data selected: 1990

TV INTERFERENCE and SPACING ANALYSIS PROGRAM

Date: 04-22-2008 Time: 14:33:07

Record Selected for Analysis

WYBE-CA BLTTL -19990811JH PINEHURST NC US
Channel 44 ERP 0.826 kW HAAT 00108 m RCAMSL 00207 m
Latitude 035-09-57 Longitude 0079-25-12
Status LIC Zone Border Offset -
Dir Antenna Make CDB Model 00000000022617 Beam tilt N Ref Azimuth 0.0
Last update 00000000 Cutoff date 00000000 Docket
Comments
Applicant MULTIMEDIA NETWORK OF NC, INC

Cell Size for Service Analysis 1.0 km/side

Distance Increments for Longley-Rice Analysis 1.00 km

Not full service station

Facility meets maximum power limit

Azimuth (Deg)	ERP (kW)	HAAT (m)	74.0 dBu F(50,50) (km)
0.0	0.078	70.2	3.6
45.0	0.181	101.6	5.4
90.0	0.000	93.9	1.0
135.0	0.000	94.2	1.0
180.0	0.000	98.9	1.0
225.0	0.000	93.8	1.0
270.0	0.034	66.0	2.9
315.0	0.392	67.7	5.4

Evaluation from Class A Station

Station inside contour of station

WLXI-TV 43 GREENSBORO NC BMPCDT 20020201AAN

Station inside contour of station

WLXI-TV 43 GREENSBORO NC BLCDT 20060630ADU

Contour overlap to station

WUNG-TV 44 CONCORD NC BLEDT 20010814ABF

Contour overlap to station

WUNG-DT 44 CONCORD NC DTVPLN DTVPL1275

Contour overlap to station

WXLV-TV 45 WINSTON-SALEM NC BPCT 20000728AED

Contour Overlap Evaluation from Class A Complete

Contour Overlap Evaluation from LPTV Station to LPTV Stations

No Spacing violations or contour overlap from LPTV station

Contour Overlap Evaluation from LPTV to LPTV Stations Complete

Contour Overlap to Proposed Station

Station

WUNG-TV 44 CONCORD NC BLEDT20010814ABF causes

Contour overlap to Class A station

WYBE-CA 44 PINEHURST NC BLTTL 19990811JH

Station
WZGS-CA 44 RALEIGH NC BSTA20050324AIS causes
Contour overlap to station
WYBE-CA 44 PINEHURST NC BLTTL 19990811JH

Station
WECT 44 WILMINGTON NC BLCDDT20040423AAK causes
Contour overlap to Class A station
WYBE-CA 44 PINEHURST NC BLTTL 19990811JH

Station
WECT 44 WILMINGTON NC USERRECORD01 causes
Contour overlap to Class A station
WYBE-CA 44 PINEHURST NC BLTTL 19990811JH
Contour Overlap Evaluation to Proposed Station Complete

Proposed facility OK to FCC Monitoring Stations
Proposed facility OK toward West Virginia quiet zone
Proposed facility OK toward Table Mountain
Proposed facility is beyond the Canadian coordination distance
Proposed facility is beyond the Mexican coordination distance
Proposed station is OK toward AM broadcast stations

Start of Interference Analysis

Channel	Proposed Station Call	City/State	ARN
44	WYBE-CA	PINEHURST NC	BLTTL 19990811JH

Stations Potentially Affected by Proposed Station

Chan	Call	City/State	Dist(km)	Status	Application	Ref. No.
43	WLXI-TV	GREENSBORO NC	86.1	CP MOD	BMPCDT	-20020201AAN
43	WLXI-TV	GREENSBORO NC	86.1	LIC	BLCDDT	-20060630ADU
44	WUNG-TV	CONCORD NC	110.1	LIC	BLEDT	-20010814ABF
44	WUNG-DT	CONCORD NC	110.1	PLN	DTVPLN	-DTVP1275
45	WXLV-TV	WINSTON-SALEM NC	86.1	APP	BPCT	-20000728AED

%%%

Analysis of Interference to Affected Station 6

Analysis of current record

Channel	Call	City/State	Application	Ref. No.
44	WYBE-CA	PINEHURST NC	BLTTL	-19990811JH

Stations Potentially Affecting This Station

Chan	Call	City/State	Dist(km)	Status	Application	Ref. No.
36	WFPX	FAYETTEVILLE NC	44.3	LIC	BLCDDT	-20021025AAD
36	WFAY-DT	FAYETTEVILLE NC	44.3	PLN	DTVPLN	-DTVP1025
42	WRAY-TV	WILSON NC	136.9	LIC	BLCDDT	-20060609AAX
42	WRAY-DT	WILSON NC	136.9	PLN	DTVPLN	-DTVP1200
43	WLXI-DT	GREENSBORO NC	123.5	PLN	DTVPLN	-DTVP1233
43	WLXI-TV	GREENSBORO NC	86.1	CP MOD	BMPCDT	-20020201AAN
43	WLXI-TV	GREENSBORO NC	86.1	LIC	BLCDDT	-20060630ADU
43	WFXB	MYRTLE BEACH SC	110.8	LIC	BLCT	-20061117ACG
44	WAGV	HARLAN KY	392.1	APP	BMPCT	-19961022KF
44	WUNG-DT	CONCORD NC	110.1	PLN	DTVPLN	-DTVP1275
44	WZGS-CA	RALEIGH NC	93.3	APP	BDISTTA	-20070820ACH
44	WZGS-CA	RALEIGH NC	93.3	STA	BSTA	-20050324AIS
44	W66BU	SYLVA NC	355.8	CP	BDISDTT	-20060316ACR
44	WECT-TV	WILMINGTON NC	143.7	LIC	BPRM	-20020423ABN

44	WECT	WILMINGTON NC	143.7	LIC	BLCDDT	-20040423AAK
44	960628KL	AIKEN SC	282.7	APP	BPET	-19960628KL
44	WJWJ-TV	BEAUFORT SC	296.5	LIC	BLEDT	-20060221AEJ
44	WJWJ-DT	BEAUFORT SC	296.4	PLN	DTVPLN	-DTVP1280
44	WJDG-LD	GRUNDY VA	260.3	CP	BDCCDTL	-20061025ADU
44	WCVW	RICHMOND VA	307.5	LIC	BLEDT	-20050303AAV
44	WCVW-DT	RICHMOND VA	307.5	PLN	DTVPLN	-DTVP1283
45	W16CF	CHARLOTTE NC	115.4	CP	BDISDTT	-20060327ACD
45	W63CW	GOLDSBORO NC	127.9	CP	BDISDTT	-20071128ANQ
45	W63CW	GOLDSBORO NC	127.9	APP	BDISDTT	-20060328AKA
45	NEW	RALEIGH NC	98.6	APP	BSFDTL	-20060630AJL
45	W45CN	ROCKY MOUNT NC	165.6	CP	BDFCDTT	-20060330ACW
45	WXLV-TV	WINSTON-SALEM NC	86.1	APP	BPCT	-20000728AED
45	WJPM-DT	FLORENCE SC	102.9	PLN	DTVPLN	-DTVP1314
48	WRAL-TV	RALEIGH NC	98.6	CP	BPCDT	-20080319AAE
51	WFMY-TV	GREENSBORO NC	87.0	LIC	BLCDDT	-20050628AAB
51	WFMY-DT	GREENSBORO NC	87.0	PLN	DTVPLN	-DTVP1484
52	WTVD-DT	DURHAM NC	97.9	PLN	DTVPLN	-DTVP1515
58	WUNG-TV	CONCORD NC	110.1	LIC	BLET	-19921125KF
58	WHMC-DT	CONWAY SC	138.0	PLN	DTVPLN	-DTVP1636
59	WUNC-DT	CHAPEL HILL NC	81.2	PLN	DTVPLN	-DTVP1653
44	WECT	WILMINGTON NC	161.0	APP	USERRECORD-01	

Total scenarios = 4

Result key: 1
Scenario 1 Affected station 6 WYBE-CA
Before Analysis

Results for: 44N NC PINEHURST	BLTTL	19990811JH	LIC
	POPULATION	AREA (sq km)	
within Noise Limited Contour	7519	36.9	
not affected by terrain losses	7519	36.9	
lost to NTSC IX	2210	3.0	
lost to additional IX by ATV	595	5.0	
lost to all IX	2805	8.0	

Potential Interfering Stations Included in above Scenario 1

44N NC RALEIGH	BSTA	20050324AIS	STA
44A NC CONCORD	DTVPLN	DTVP1275	PLN
44A NC WILMINGTON	BLCDDT	20040423AAK	LIC

Result key: 2
Scenario 2 Affected station 6 WYBE-CA
Before Analysis

Results for: 44N NC PINEHURST	BLTTL	19990811JH	LIC
	POPULATION	AREA (sq km)	
within Noise Limited Contour	7519	36.9	
not affected by terrain losses	7519	36.9	
lost to NTSC IX	2210	3.0	
lost to additional IX by ATV	619	6.0	
lost to all IX	2829	9.0	

Potential Interfering Stations Included in above Scenario 2

44N NC RALEIGH	BSTA	20050324AIS	STA
44A NC CONCORD	DTVPLN	DTVP1275	PLN
44A NC WILMINGTON	USERRECORD01		APP

Result key: 3
Scenario 3 Affected station 6 WYBE-CA

Before Analysis

Results for: 44N NC PINEHURST	BLTTL	19990811JH	LIC
	POPULATION	AREA (sq km)	
within Noise Limited Contour	7519	36.9	
not affected by terrain losses	7519	36.9	
lost to NTSC IX	0	0.0	
lost to additional IX by ATV	2292	7.0	
lost to all IX	2292	7.0	

Potential Interfering Stations Included in above Scenario 3

44A NC CONCORD	DTVPLN	DTVP1275	PLN
44A NC WILMINGTON	BLCDDT	20040423AAK	LIC

Result key: 4
Scenario 4 Affected station 6 WYBE-CA
Before Analysis

Results for: 44N NC PINEHURST	BLTTL	19990811JH	LIC
	POPULATION	AREA (sq km)	
within Noise Limited Contour	7519	36.9	
not affected by terrain losses	7519	36.9	
lost to NTSC IX	0	0.0	
lost to additional IX by ATV	2316	8.0	
lost to all IX	2316	8.0	

Potential Interfering Stations Included in above Scenario 4

44A NC CONCORD	DTVPLN	DTVP1275	PLN
44A NC WILMINGTON	USERRECORD01		APP

Proposal fails scenario	1	received IX increased to	37.3%
Proposal fails scenario	2	received IX increased to	37.6%
Proposal fails scenario	3	received IX increased to	30.5%
Proposal fails scenario	4	received IX increased to	30.8%

Proposed station is MX			
44N NC PINEHURST	BLTTL	19990811JH	LIC

Proposal MX with group in scenario 1 of station 6

Proposed station is MX			
44N NC PINEHURST	BLTTL	19990811JH	LIC

Proposal MX with group in scenario 3 of station 6

Proposed station is MX			
44N NC PINEHURST	BLTTL	19990811JH	LIC

Proposal MX with group in scenario 2 of station 6

Proposed station is MX			
44N NC PINEHURST	BLTTL	19990811JH	LIC

Proposal MX with group in scenario 4 of station 6

FINISHED FINISHED FINISHED FINISHED FINISHED FINISHED

WECT-DT POST-TRANSITION INTERFERENCE CAUSED STUDY

Percent allowed new interference: 0.500
Percent allowed new interference to Class A: 0.500
Census data selected 2000

Post Transition Data Base Selected
/export/home/cdbs/tvdb.sff_G
TV INTERFERENCE and SPACING ANALYSIS PROGRAM

Date: 04-04-2008 Time: 10:42:44
Record Selected for Analysis

WECT USERRECORD-01 WILMINGTON NC US
Channel 44 ERP 710. kW HAAT 592. m RCAMSL 00606 m
Latitude 034-07-53 Longitude 0078-11-17
Status APP Zone 2 Border
Dir Antenna Make usr Model 00000000WECT44 Beam tilt N Ref Azimuth 0.
Last update Cutoff date Docket
Comments
Applicant

Cell Size for Service Analysis 2.0 km/side
Distance Increments for Longley-Rice Analysis 1.00 km

Facility does not meet maximum height/power limits
Channel 44 ERP = 710.00 HAAT = 592.

Azimuth (Deg)	ERP (kW)	HAAT (m)	41.0 dBu F(50,90) (km)
0.0	414.424	590.0	111.9
45.0	464.107	592.0	113.0
90.0	426.444	597.1	112.5
135.0	214.385	590.6	106.1
180.0	180.351	596.0	104.9
225.0	131.890	591.0	102.0
270.0	59.711	588.8	95.2
315.0	569.363	587.2	114.6

Evaluation toward Class A Stations

No Spacing violations or contour overlap to Class A stations

Class A Evaluation Complete

Proposed facility OK to FCC Monitoring Stations
Proposed facility OK toward West Virginia quite zone
Proposed facility OK toward Table Mountain
Proposed facility is beyond the Canadian coordination distance
Proposed facility is beyond the Mexican coordination distance
Proposed station is OK toward AM broadcast stations

Start of Interference Analysis

Channel	Proposed Station Call	City/State	ARN
44	WECT	WILMINGTON NC	USERRECORD01

Stations Potentially Affected by Proposed Station

Chan	Call	City/State	Dist(km)	Status	Application	Ref. No.
44	WUNG-TV	CONCORD NC	259.9	CP	BDTV	-00000276
44	WJWJ-TV	BEAUFORT SC	280.0	LIC	BLEDT	-20060221AEJ
44	WCVW	RICHMOND VA	379.5	CP MOD	BMPEDT	-20041015ABY
45	WJPM-TV	FLORENCE SC	143.9	LIC	BLEDT	-20050324ACE

%%%

Analysis of Interference to Affected Station 1

Analysis of current record

Channel	Call	City/State	Application	Ref. No.
44	WUNG-TV	CONCORD NC	BDTV	-00000276

Stations Potentially Affecting This Station

Chan	Call	City/State	Dist(km)	Status	Application	Ref. No.
43	WLXI-TV	GREENSBORO NC	90.8	CP MOD	BMPCDT	-20020201AAN
43	WRET-TV	SPARTANBURG SC	121.9	LIC	BLEDT	-20050324ACD
44	WHSB-TV	MONROE GA	387.3	LIC	BLCDDT	-20040319AIE
44	WTSF	ASHLAND KY	375.7	CP	BDTV	-00000277
44	WJWJ-TV	BEAUFORT SC	294.3	LIC	BLEDT	-20060221AEJ
44	WCVW	RICHMOND VA	360.1	CP MOD	BMPEDT	-20041015ABY
45	WYCW	ASHEVILLE NC	176.6	CP	BPCDDT	-19991101AGU
45	WJPM-TV	FLORENCE SC	143.6	LIC	BLEDT	-20050324ACE
44	WECT	WILMINGTON NC	259.9	APP	USERRECORD-01	

Total scenarios = 1

Result key: 1
 Scenario 1 Affected station 1
 Before Analysis

Results for: 44A NC CONCORD BDTV 00000276 CP
 HAAT 422.0 m, ATV ERP 149.0 kW

	POPULATION	AREA (sq km)
within Noise Limited Contour	2647164	25512.1
not affected by terrain losses	2633701	25228.6
lost to NTSC IX	0	0.0
lost to additional IX by ATV	87653	758.6
lost to ATV IX only	87653	758.6
lost to all IX	87653	758.6

Potential Interfering Stations Included in above Scenario 1

43A NC GREENSBORO	BMPCDT	20020201AAN	CP
43A SC SPARTANBURG	BLEDT	20050324ACD	LIC
45A NC ASHEVILLE	BPCDDT	19991101AGU	CP
45A SC FLORENCE	BLEDT	20050324ACE	LIC

After Analysis

Results for: 44A NC CONCORD BDTV 00000276 CP
 HAAT 422.0 m, ATV ERP 149.0 kW

	POPULATION	AREA (sq km)
within Noise Limited Contour	2647164	25512.1
not affected by terrain losses	2633701	25228.6
lost to NTSC IX	0	0.0
lost to additional IX by ATV	96906	1006.1

lost to ATV IX only	96906	1006.1
lost to all IX	96906	1006.1

Potential Interfering Stations Included in above Scenario 1

43A NC GREENSBORO	BMPCDT	20020201AAN	CP
43A SC SPARTANBURG	BLEDT	20050324ACD	LIC
45A NC ASHEVILLE	BPCDT	19991101AGU	CP
45A SC FLORENCE	BLEDT	20050324ACE	LIC
44A NC WILMINGTON	USERRECORD01		APP

Percent new IX = 0.3634%

Worst case new IX 0.3634% Scenario 1

#####

Analysis of Interference to Affected Station 2

Analysis of current record

Channel	Call	City/State	Application Ref. No.
44	WJWJ-TV	BEAUFORT SC	BLEDT -20060221AEJ

Stations Potentially Affecting This Station

Chan	Call	City/State	Dist(km)	Status	Application Ref. No.
44	WJEB-TV	JACKSONVILLE FL	283.4	LIC	BLEDT -20060313AEB
44	WHSB-TV	MONROE GA	360.7	LIC	BLCDDT -20040319AIE
44	WUNG-TV	CONCORD NC	294.3	CP	BDTV -00000276
45	WJPM-TV	FLORENCE SC	194.8	LIC	BLEDT -20050324ACE
44	WECT	WILMINGTON NC	280.0	APP	USERRECORD-01

Proposal causes no interference

#####

Analysis of Interference to Affected Station 3

Analysis of current record

Channel	Call	City/State	Application Ref. No.
44	WCVW	RICHMOND VA	BMPEDT -20041015ABY

Stations Potentially Affecting This Station

Chan	Call	City/State	Dist(km)	Status	Application Ref. No.
44	WDPB	SEAFORD DE	215.4	CP MOD	BMPEDT -20040330AFB
44	WWPB	HAGERSTOWN MD	239.9	LIC	BLEDT -20031029ACE
44	WUNG-TV	CONCORD NC	360.1	CP	BDTV -00000276
44	WMCN-TV	ATLANTIC CITY NJ	343.4	CP	BPCDDT -19990604KF
44	WECT	WILMINGTON NC	379.5	APP	USERRECORD-01

Proposal causes no interference

#####

Analysis of Interference to Affected Station 4

Analysis of current record

Channel	Call	City/State	Application Ref. No.
---------	------	------------	----------------------

45 WJPM-TV FLORENCE SC BLEDT -20050324ACE

Stations Potentially Affecting This Station

Chan	Call	City/State	Dist(km)	Status	Application	Ref. No.
44	WUNG-TV	CONCORD NC	143.6	CP	BDTV	-00000276
44	WJWJ-TV	BEAUFORT SC	194.8	LIC	BLEDT	-20060221AEJ
45	WGNM	MACON GA	391.6	CP	BPCDT	-19991029AFL
45	WYCW	ASHEVILLE NC	276.9	CP	BPCDT	-19991101AGU
46	WWAY	WILMINGTON NC	143.9	CP	BDTV	-00000282
44	WECT	WILMINGTON NC	143.9	APP	USERRECORD-01	

Proposal causes no interference

#####

Analysis of Interference to Affected Station 5

Analysis of current record

Channel	Call	City/State	Application	Ref. No.
44	WECT	WILMINGTON NC	USERRECORD-01	

Stations Potentially Affecting This Station

Chan	Call	City/State	Dist(km)	Status	Application	Ref. No.
44	WUNG-TV	CONCORD NC	259.9	CP	BDTV	-00000276
44	WJWJ-TV	BEAUFORT SC	280.0	LIC	BLEDT	-20060221AEJ
44	WCVW	RICHMOND VA	379.5	CP MOD	BMPEDT	-20041015ABY
45	WJPM-TV	FLORENCE SC	143.9	LIC	BLEDT	-20050324ACE

Total scenarios = 1

Result key: 2
Scenario 1 Affected station 5
Before Analysis

Results for: 44A NC WILMINGTON USERRECORD01 APP
HAAT 592.0 m, ATV ERP 710.0 kW

	POPULATION	AREA (sq km)
within Noise Limited Contour	926138	37329.9
not affected by terrain losses	926138	37329.9
lost to NTSC IX	0	0.0
lost to additional IX by ATV	52	4.0
lost to ATV IX only	52	4.0
lost to all IX	52	4.0

Potential Interfering Stations Included in above Scenario 1

44A NC CONCORD BDTV 00000276 CP

#####

FINISHED FINISHED FINISHED FINISHED FINISHED FINISHED