

Technical Report W231BT.CP Minor Modification

This technical report is submitted for a minor modification to W231BT.CP at Martinsville, IN, FCC file no. BPFT-20080718ARR. A change to channel 232 with a corresponding antenna and ERP modification is requested. The facility is to rebroadcast the primary signal of WMYJ(AM) 1540 kHz at Martinsville, IN, FCC facility I.D. 57356.

The following exhibits are provided for the FCC form 349 application:

- E-1 W231BT.CP Overlap Study
- E-2 60 dBu Contour Plot within WMYJ(AM) 2.0 mV/m Daytime Contour and Overlap to the Current W231BT.CP 60 dBu Contour
- E-3 Interference Plot to WREB 232A
- E-4 Interference Plot Within 2nd Adjacent WFBQ(FM) 234B
- E-5 Interference Contour Tabulation
- E-6 PSI DA Antenna Pattern
- E-7 Tower Site Aerial Photo
- E-8 ASR 1028571

W231BT.CP Modification Analysis:

The W231BT.CP modification to channel 232 is inside the 2nd adjacent WFBQ(FM) 234B protected contour. Therefore, the interference ratio is utilized to determine the interfering contour in accordance with FCC-02-244, paragraph 12. The F(50-50) contour from WFBQ(FM) to the W231BT.CP tower site is 64.08 dBu. Adding +40 dBu yields an F(50-10) interfering contour of 104.08 dBu. Since the facility is located within an area that might receive interference, the vertical elevation pattern of the PSI six-bay directional antenna was used to determine the actual line of sight reduced ERP from the interfering contour.

Anderson Associates

Broadcast Consultants
1519 Euclid Avenue
Bowling Green, KY 42103

Exhibit E-5 shows a tabulation of the actual line of sight distance at each degree from 0 degrees horizontal to the ground calculated from the vertical F factor data provided by the antenna manufacturer. Using the V-Soft CONTOUR program, the $F^2 \times 0.215$ kW reduced ERP is used to calculate the actual line of sight distance at each degree. From this value, the height above ground of the interfering contour was calculated geometrically at each degree relative to the tower site elevation:

$$\text{Height Above Ground} = \text{COR AGL} - (\text{Line of Sight Distance} \times \text{Sine}(x)),$$

Where (x) is the depression angle below horizontal. The lowest height above ground was found to be 4.7 meters above the tower site elevation. Exhibit E-7 shows an aerial photo of the tower site and the reduced ERP interfering contour at the 104.08 F(50-10) dBu, and shows there are no roads or buildings within the interfering contour where the W231BT signal would reach any potential listeners at that minimum height above ground. Consequently, a waiver of Section 74.1204 is requested.

Antenna System:

W231BT.CP will remain at its current tower site, ASR #1028571, and operate at 0.215 kW ERP at 55 meters COR AGL, using a 6 bay 0.75 wavelength PSI FML-6-WS directional antenna.

RF Exposure Calculation:

The RF contribution of the facility was calculated using the formula from the OET Bulletin 65:

Anderson Associates

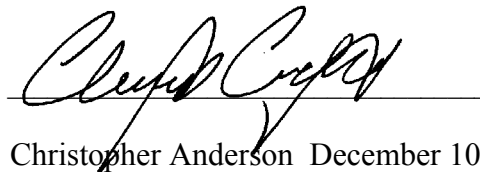
Broadcast Consultants
1519 Euclid Avenue
Bowling Green, KY 42103

$$S \text{ (RF in microwatts/cm}^2\text{)} = \frac{33.4 \times F^2 \times (H \text{ ERP} + V \text{ ERP in watts})}{R^2 \text{ (distance to radiation center in meters}^2\text{)}}$$

Using a worst-case vertical (F) factor of 1.00 yields an RF value of 5.11 $\mu\text{W}/\text{cm}^2$ to the ground, which is well below 5% of the 200 $\mu\text{W}/\text{cm}^2$ maximum permissible for general public exposure, allowing exclusion from consideration.

Conclusion:

It is concluded that the modification of W231BT.CP complies with all Commission rules and policies.



Christopher Anderson December 10, 2009
andersce@bham.rr.com
© 2009 Anderson Associates

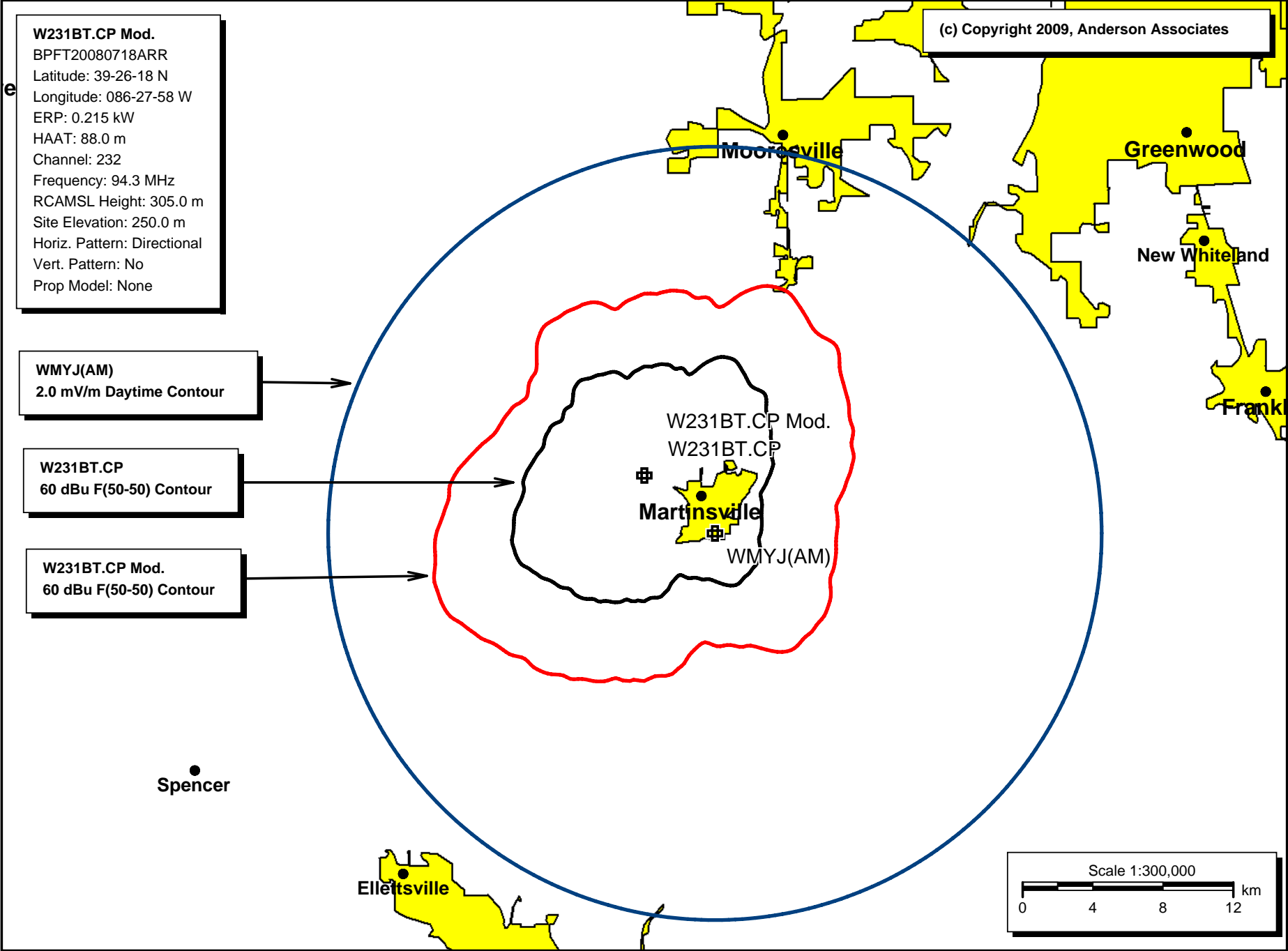
E-1 W231BT Overlap Study

REFERENCE		CH#	232D - 94.3 MHz, Pwr= 0.215 kW, HAAT= 88.0 M, COR= 305 M				DISPLAY DATES				
39 26 18.0 N.		Average Protected F(50-50)= 11.67 km							DATA 12-01-09		
86 27 58.0 W.		Standard Directional							SEARCH 12-08-09		
CH	CALL	TYPE	ANT	AZI	DI ST	LAT	PWR(kW)	INT(km)	PRO(km)	*IN*	*OUT*
CITY		STATE		<--	FILE #	LNG	HAAT(M)	COR(M)	LICENSEE	(Overlap in km)	
231D	W231BT	LIC	_C_	43.5	0.9	39 26 40.0	0.019	9.3	6.6	-21.4*	-25.2*
Martinsville		IN		223.5	BLFT20070108AAD	86 27 31.0		287	Mid-america Radio Group, I		
231D	W231BT	CP	_C_	0.0	0.0	39 26 18.0	0.038	8.9	6.2	-19.2*	-20.6*
Martinsville		IN		0.0	BPFT20080718ARR	86 27 58.0		296	Mid-america Radio Group, I		
234B	WFBQ	LIC	_CN	24.0	55.6	39 53 43.0	58.000	8.3	78.3	36.8	-24.3*<
Indianapolis		IN		204.1	BLH19980707KB	86 12 04.0	245	502	Capstar Tx Limited Partner		
232A	WREB	LIC	_HN	304.2	44.2	39 39 38.0	3.000	59.5	15.2	-23.3*<	2.2
Greencastle		IN		123.9	BLH3278	86 53 34.0	49	285	The Original Company, Inc		
230B1	AL7800	RSV	___	47.9	48.0	39 43 37.0	25.000	4.2	45.9	31.0	0.7
Lawrence		IN		228.1	RM11116	86 03 00.0	100	343			
232A	WIFE-FM	LIC	_C_	70.0	88.6	39 42 22.0	1.050	74.8	25.3	1.4	20.8
Rushville		IN		250.6	BMLH20000913AAR	85 29 41.0	171	462	Rodgers Broadcasting Corp.		
231D	635293	APP	_C_	184.4	33.0	39 08 30.8	0.010	11.8	8.4	9.5	7.5
Bl ooming ton		IN		4.3	BNPFT20030317FMC	86 29 42.9		426	Radio Assist Ministry, Inc		
231A	1200966	RSV	___	219.3	61.6	39 00 31.0	6.000	38.6	25.1	10.3	17.4
Worthington		IN		39.0		86 55 05.0	100	275	L. Dean Spencer		
231A	AL0043	VAC	___	219.3	61.6	39 00 31.0	6.000	38.6	25.1	10.3	17.4
Worthington		IN		39.0	RM11410	86 55 05.0	100	275	L. dean Spencer - Counterpr		
231A	1200237	APP	_CX	219.3	61.6	39 00 31.0	6.000	38.5	25.1	10.4	17.5
Worthington		IN		39.0	BNPH20070820AGA	86 55 05.0	100	275	L. Dean Spencer		
230B1	WRWM	CP	NCX	43.7	60.0	39 49 39.0	6.900	3.3	39.4	43.8	19.2
Lawrence		IN		224.0	BPH20070820AB0	85 58 51.0	146	393	Susquehanna Radio Corp.		
286A	WHCC	LIC	_C_	215.9	33.8	39 11 32.0	1.700	0.0	0.0	9.5R	24.3M
Ellettsville		IN		35.8	BLH20000502AAN	86 41 46.0	189	408	Artistic Media Partners, I		
232D	649023	APP	_C_	30.2	76.9	40 02 07.0	0.250	23.8	7.1	40.8	27.6
Nobl esville		IN		210.5	BNPFT20030317GWB	86 00 44.0		259	Kaspar Broadcasting Co, In		
232C2	WULF	LIC	NCN	174.3	174.8	37 52 18.0	40.000	133.9	51.2	29.4	84.3
Hardi nsburg		KY		354.4	BLH19950630KE	86 16 04.0	160	366	Skytower Communications -		
230A	WRWM	LIC	NCX	43.7	60.0	39 49 39.0	2.950	2.5	27.7	44.5	31.3
Fi shers		IN		224.0	BLH20040507AAE	85 58 51.0	145	393	Susquehanna Radio Corp.		
233D	631834	APP	_C_	152.1	53.7	39 00 40.0	0.010	9.0	6.4	33.7	31.6
Houston		IN		332.2	BNPFT20030317AWL	86 10 29.0		347	Educational Media Foundati		
232D	637678	APP	_C_	19.8	84.4	40 09 09.0	0.038	18.6	5.6	55.1	42.3
Arcadia		IN		200.0	BNPFT20030314A0Q	86 07 45.0		325	Friends Of Christian Radio		
285A	WINN	LIC	_CN	122.7	51.9	39 11 09.0	6.000	0.0	0.0	9.5R	42.4M
Col umbus		IN		303.0	BLH19910501KA	85 57 37.0	91	297	White River Broadcasting C		
233D	649259	APP	_C_	136.8	72.8	38 57 33.0	0.250	10.1	7.1	49.7	46.3
Seymour		IN		317.2	BNPFT20030317FDV	85 53 24.0		205	The Trustees Of Indiana Un		
285D	649053	APP	_C_	15.8	59.3	39 57 07.0	0.250	0.0	0.0	9.5R	49.8M
Zionsville		IN		196.0	BNPFT20030317GWT	86 16 33.0		301	Kaspar Broadcasting Co, In		
233A	WRZR	LIC	NCN	205.9	101.0	38 37 09.0	1.800	36.1	24.0	52.4	58.4
Loogootee		IN		25.6	BLH19980923KA	86 58 27.0	130	285	Hembree Communications, In		
229A	AL7807	RSV	___	278.5	87.7	39 33 01.0	6.000	2.9	30.5	75.1	56.3
Clinton		IN		97.9	RM11116	87 28 32.0	100	270			
230A	WPFR-FM	LIC	_C_	278.5	87.7	39 33 01.0	2.350	2.6	29.9	75.5	56.9
Clinton		IN		97.9	BLED20000605ABI	87 28 32.0	161	334	Word Power, Inc.		
229A	WPFR-FM	CP	_CX	278.5	87.7	39 33 01.0	2.350	2.6	29.9	75.5	56.9
Clinton		IN		97.9	BPED20071107ACL	87 28 32.0	161	334	Word Power, Inc.		
285D	649046	APP	_C_	30.2	76.9	40 02 07.0	0.250	0.0	0.0	9.5R	67.4M
Nobl esville		IN		210.5	BNPFT20030317GWL	86 00 44.0		259	Kaspar Broadcasting Co, In		

CH CITY	CALL	TYPE STATE	ANT	AZI ---	DI ST FILE #	LAT LNG	PWR(kW) HAAT(M)	INT(km) COR(M)	PRO(km) LICENSEE	Page # 2		
										IN	*OUT*	
(Overlap in km)												
285A Rockville	WAXI	LIC IN	_CX	294.6 114.1	78.5 BMLH20070802ADU	39 43 44.0 87 17 56.0	1.700 134	0.0 317	0.0 Crossroads Investments, LI	9.5R	69.0M	
229A French Lick	R12166	ADD IN	---	187.8 7.7	94.5	38 35 41.0 86 36 48.0	6.000 100	2.3 291	23.5 L. dean Spencer	80.5	70.0	
231D Frankfort	W285DQ	CP IN	_C_	356.9 176.8	96.2 BPFT20090731ADX	40 18 12.0 86 31 40.0	0.250	15.1 327	10.7 Kaspar Broadcasting Co., I	71.0	71.4	
233D Salem	W233AO	LIC IN	_V_	163.7 343.9	96.0 BLFT20070222AON	38 36 29.0 86 09 21.0	0.013	9.1 337	6.5 Good Shepherd Radi o, Inc	76.6	75.2	
231B Cincinnati	WNNF	LIC OH	_CX	101.3 282.6	173.2 BLH20070313AAT	39 06 59.0 84 30 07.0	16.000 264	74.5 483	63.4 Cumulus Li censi ng Li c	87.5	86.4	
235A Danville	WRHK	LIC IL	_CN	313.8 133.1	119.6 BLH19930415KA	40 10 40.0 87 28 55.0	6.000 100	3.0 295	30.8 Neuhoff	108.1 Fami ly Li mi ted Pa	88.0	
233B Champaign	WLRW	LIC IL	_CX	296.7 115.6	173.9 BLH20051107ABO	40 07 35.0 88 17 25.0	50.000 138	76.0 357	63.1 Saga Communi cations Of III	89.5	93.4	
232L1 Mari on	WIWU-LP	LIC IN	---	29.3 209.8	138.2 BLL20071001AJP	40 31 15.0 85 39 59.0	0.100 25	17.9 281	5.5 Indiana Wesl eyan Uni versi t	108.3	91.4	
235B Mount Carmel	WYNG	CP IL	_CX	225.1 44.3	162.7 BPH20090123ATC	38 23 57.0 87 47 18.0	50.000 150	6.2 280	66.3 W. Russell Wi thers, Jr.	143.4	94.8	
235B Mount Carmel	WYNG	LIC IL	_CN	225.1 44.3	162.7 BLH19790820AD	38 23 57.0 87 47 18.0	50.000 128	5.7 258	63.3 W. Russell Wi thers, Jr.	143.8	97.8	
235B Fairfield	WREW	LIC OH	_CN	98.4 279.6	169.7 BLH19921014KE	39 12 01.0 84 31 22.0	10.500 322	5.1 542	63.8 Bonnevi lle Hol di ng Company	153.5	104.3	
231B Watseka	WGFA-FM	LIC IL	_CN	324.4 143.6	186.3 BLH19970711KC	40 47 37.0 87 45 17.0	50.000 111	70.8 305	58.1 Iroquoi s County Broadcasti	105.4	107.2	
232A Celina	WKKI	LIC OH	_C_	51.1 232.3	203.8 BLH20090831ADP	40 34 21.0 84 35 22.0	5.200 108	84.9 369	27.8 The Sonshi ne Communi cation	106.1	132.2	
285A Muncie	WERK	LIC IN	_CX	47.7 228.3	119.2 BMLH20050322ADL	40 09 19.0 85 25 48.0	6.000 100	0.0 392	0.0 Backyard Broadcasti ng Indi	9.5R	109.7M	
234A New Albany	WFIA-FM	LIC IN	NC_	159.1 339.4	137.1 BLH20010430AAH	38 17 02.0 85 54 17.0	3.300 120	2.2 316	22.3 Salem Medi a Of Kentucky, I	124.7	113.8	
230A Sellersburg	AL9876	RSV IN	---	153.8 334.3	141.3 RM10378	38 17 41.0 85 45 07.0	6.000 100	2.5 253	25.2 128.0	115.0		
230A Sellersburg	WLCL	LIC IN	_CX	154.8 335.2	144.9 BLH20071218ABI	38 15 21.7 85 45 29.1	2.650 152	2.4 299	27.0 Susquehanna Radi o Corp.	131.8	116.9	
229A Walton	WFRR	LIC IN	_CN	9.7 189.9	145.0 BLH19951120KB	40 43 31.0 86 10 33.0	6.000 100	2.6 324	26.6 Christi an Fri ends Broadcas	131.8	117.4	
232B1 Plymouth	WZOC	LIC IN	_CN	4.1 184.3	232.7 BLH19921028KB	41 31 41.0 86 15 53.0	11.500 150	104.3 395	44.4 Plymouth Broadcasti ng, Inc	118.1	146.0	
229B Miami sburg	WFCJ	LIC OH	_CX	81.7 263.1	186.5 BMLH20080102ABQ	39 39 35.0 84 18 53.0	50.000 150	6.2 418	66.6 Mi ami Val ley Christi an Bro	168.4	118.3	

Terrain database is FCC NGDC 30 Sec , R= 73.215 qualifying spacings or FCC minimum Spacings in KM, M= Margin in KM
Contour distances are on direct line to and from reference station. Reference zone = 1, Co to 3rd adjacent.
Ant Column: (D= DA Standard, Z= DA 73.215, N= Not DA 73.215, _= Omni), Polarization (C,H,V,E), Beamtilt(Y,N,X)
***affixed to 'IN' or 'OUT' values = site inside protected contour.

E-2 W231BT.CP Mod. Contour Plot



E-3 W231BT.CP Mod. Interference Plot to WREB(FM) 232A

(c) Copyright 2009, Anderson Associates

W231BT.CP Mod.

BPFT20080718ARR

Latitude: 39-26-18 N

Longitude: 086-27-58 W

ERP: 0.215 kW

HAAT: 88.0 m

Channel: 232

Frequency: 94.3 MHz

RCAMSL Height: 305.0 m

Site Elevation: 250.0 m

Horiz. Pattern: Directional

Vert. Pattern: No

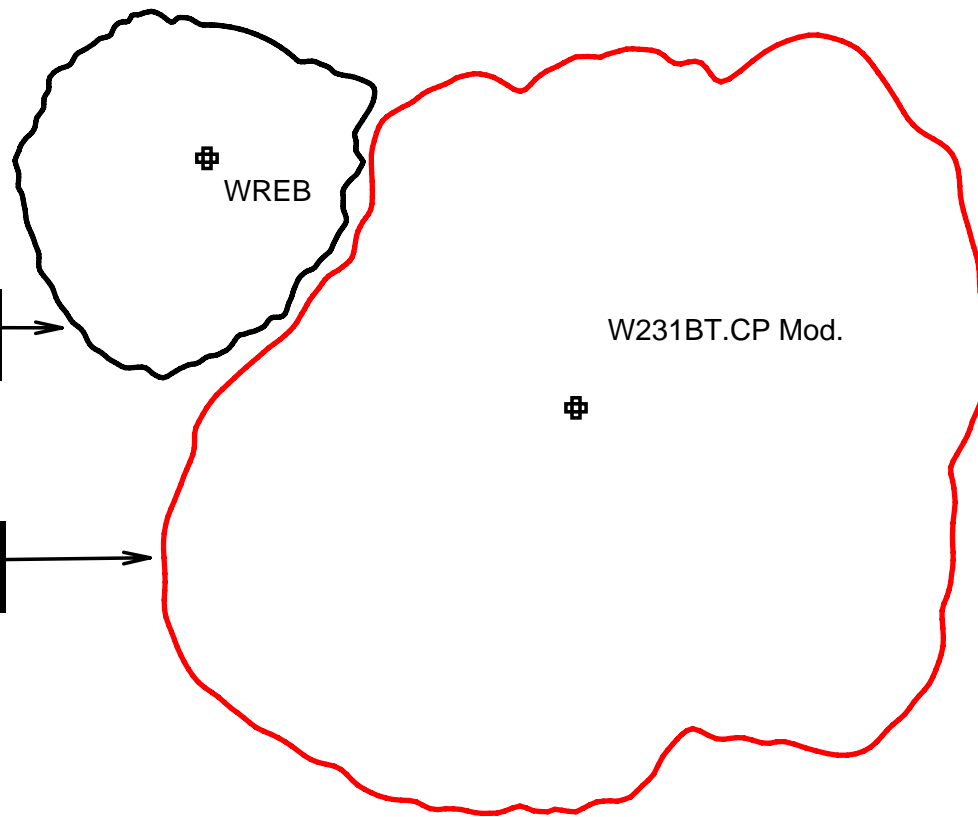
Prop Model: None

WREB(FM) 232A

60 dBu F(50-50) Contour

W231BT.CP Mod.

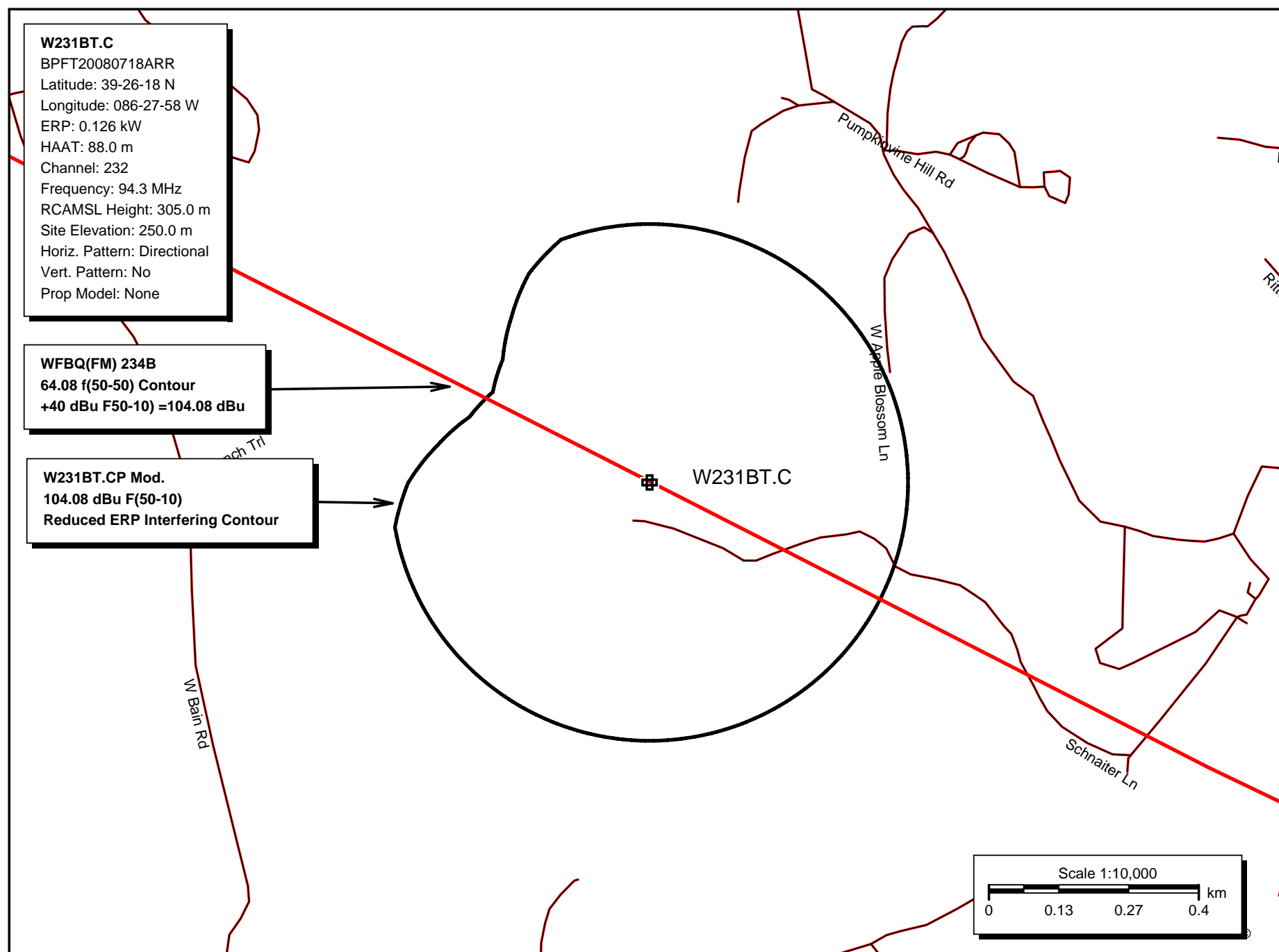
40 dBu F(50-10) Contour



Scale 1:750,000

0 10 20 30 km

E-4 W231BT.CP Mod. Reduced ERP Interference Plot



E-5 W231BT.CP to Channel 232 Interfering Contour Calculation Table
Based on 0.215 kW ERP and the 104.08 dBu Interfering Contour to WFBQ 234B

Depression Angle Below Horizontal	Antenna F Factor ⁽¹⁾	F ² X 0.215 kW Reduced Vertical ERP	Interfering Contour F(50-10) Line of Sight Distance (m) ⁽²⁾	Interfering Contour Height Above Site Elevation (m) ⁽³⁾
0	1.000	0.215	643.0	55.0
1	0.990	0.211	637.0	43.9
2	0.960	0.198	617.0	33.5
3	0.912	0.179	586.7	24.3
4	0.847	0.154	544.2	17.0
5	0.767	0.126	492.2	12.1
6	0.676	0.098	434.1	9.6
7	0.577	0.072	372.1	9.7
8	0.472	0.048	303.8	12.7
9	0.365	0.029	236.1	18.1
10	0.261	0.015	169.8	25.5
11	0.161	0.006	107.4	34.5
12	0.069	0.001	43.9	45.9
13	0.013	0.000	0.0	55.0
14	0.083	0.001	43.9	44.4
15	0.140	0.004	87.7	32.3
16	0.182	0.007	116.0	23.0
17	0.210	0.009	131.6	16.5
18	0.224	0.011	145.4	10.1
19	0.226	0.011	145.4	7.7
20	0.215	0.010	138.7	7.6
21	0.195	0.008	124.0	10.6
22	0.166	0.006	107.4	14.8
23	0.132	0.004	87.7	20.7
24	0.094	0.002	62.0	29.8
25	0.054	0.001	43.9	36.4
26	0.014	0.000	0.0	55.0
27	0.024	0.000	0.0	55.0
28	0.058	0.001	43.9	34.4
29	0.087	0.002	62.0	24.9
30	0.111	0.003	76.0	17.0
31	0.128	0.004	87.7	9.8
32	0.140	0.004	87.7	8.5
33	0.144	0.004	87.7	7.2
34	0.142	0.004	87.7	6.0
35	0.135	0.004	87.7	4.7*
36	0.123	0.003	76.0	10.3
37	0.106	0.002	62.0	17.7
38	0.087	0.002	62.0	16.8
39	0.065	0.001	43.9	27.4
40	0.041	0.000	0.0	55.0**

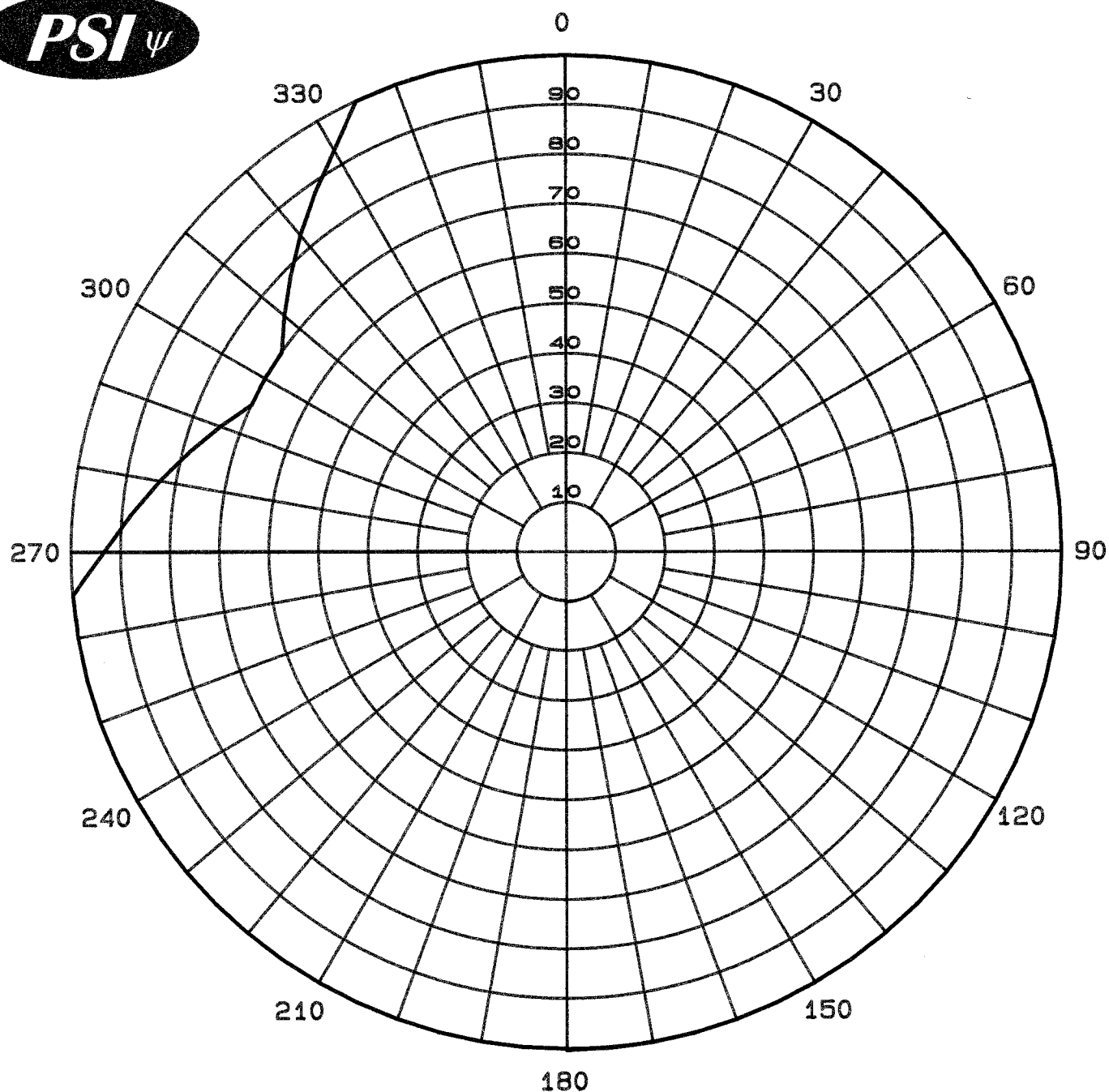
(1) The vertical elevation F factor data is provided from the antenna manufacturer shown in exhibit E-6.

(2) Based on the reduced ERP, the actual line of sight distance is calculated using the V-Soft CONTOUR program.

(3) The interfering contour height above the ground is calculated relative to the tower site elevation at each degree, and the height is calculated geometrically: COR AGL - Sine(depression angle) x reduced ERP line of sight distance.

* The lowest height above ground relative to the tower site elevation is well above any buildings, roads, or population that might receive interference from W231BT within the second adjacent WFBQ 234B protected contour.

** There are no potential sites to receive any interfering signal from W231BT from this point to the tower, which is shown in the exhibit E-7 aerial photo.



Maximum Envelope
 Azimuth Plane Pattern
 Antenna: PSIFML-6-WS
 Station: W231BT
 ERP: .380 kW (-4.20 dBk)
 Frequency: 94.1 MHz
 Configuration: $\frac{3}{4}$ wave spaced
 Date: 11/13/09

Propagation Systems Inc.
PO Box 113
Ebensburg, PA 15931

Maximum Envelope Tabulation

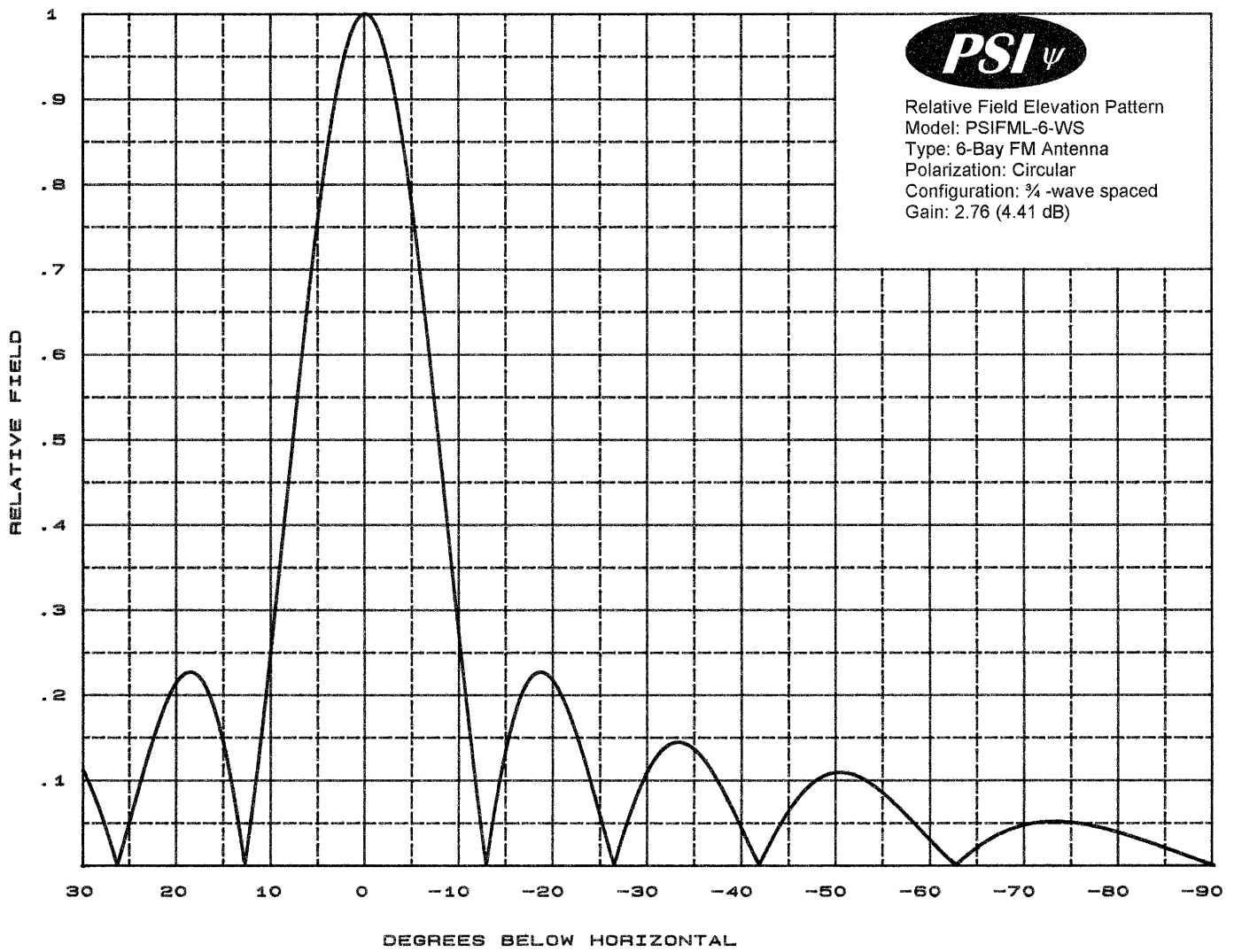
Antenna: PSIFML-6-WS

Station: W231BT

Frequency: 94.1 MHz

ERP: .380 kW (-4.20 dBk)

Angle	Relative Field	ERP kW	ERP dBK
0	1.000	0.340	-4.69
10	1.000	0.340	-4.69
20	1.000	0.340	-4.69
30	1.000	0.340	-4.69
40	1.000	0.340	-4.69
50	1.000	0.340	-4.69
60	1.000	0.340	-4.69
70	1.000	0.340	-4.69
80	1.000	0.340	-4.69
90	1.000	0.340	-4.69
100	1.000	0.340	-4.69
110	1.000	0.340	-4.69
120	1.000	0.340	-4.69
130	1.000	0.340	-4.69
140	1.000	0.340	-4.69
150	1.000	0.340	-4.69
160	1.000	0.340	-4.69
170	1.000	0.340	-4.69
180	1.000	0.340	-4.69
190	1.000	0.340	-4.69
200	1.000	0.340	-4.69
210	1.000	0.340	-4.69
220	1.000	0.340	-4.69
230	1.000	0.340	-4.69
240	1.000	0.340	-4.69
250	1.000	0.340	-4.69
260	1.000	0.340	-4.69
270	0.933	0.296	-5.29
280	0.832	0.235	-6.28
290	0.741	0.187	-7.29
300	0.700	0.167	-7.78
310	0.741	0.187	-7.29
320	0.832	0.235	-6.28
330	0.933	0.296	-5.29
340	1.000	0.340	-4.69
350	1.000	0.340	-4.69



PROPAGATION SYSTEMS INC.

Relative Field Tabulation

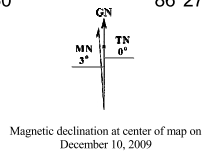
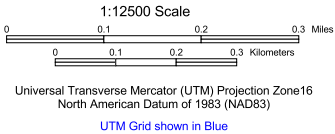
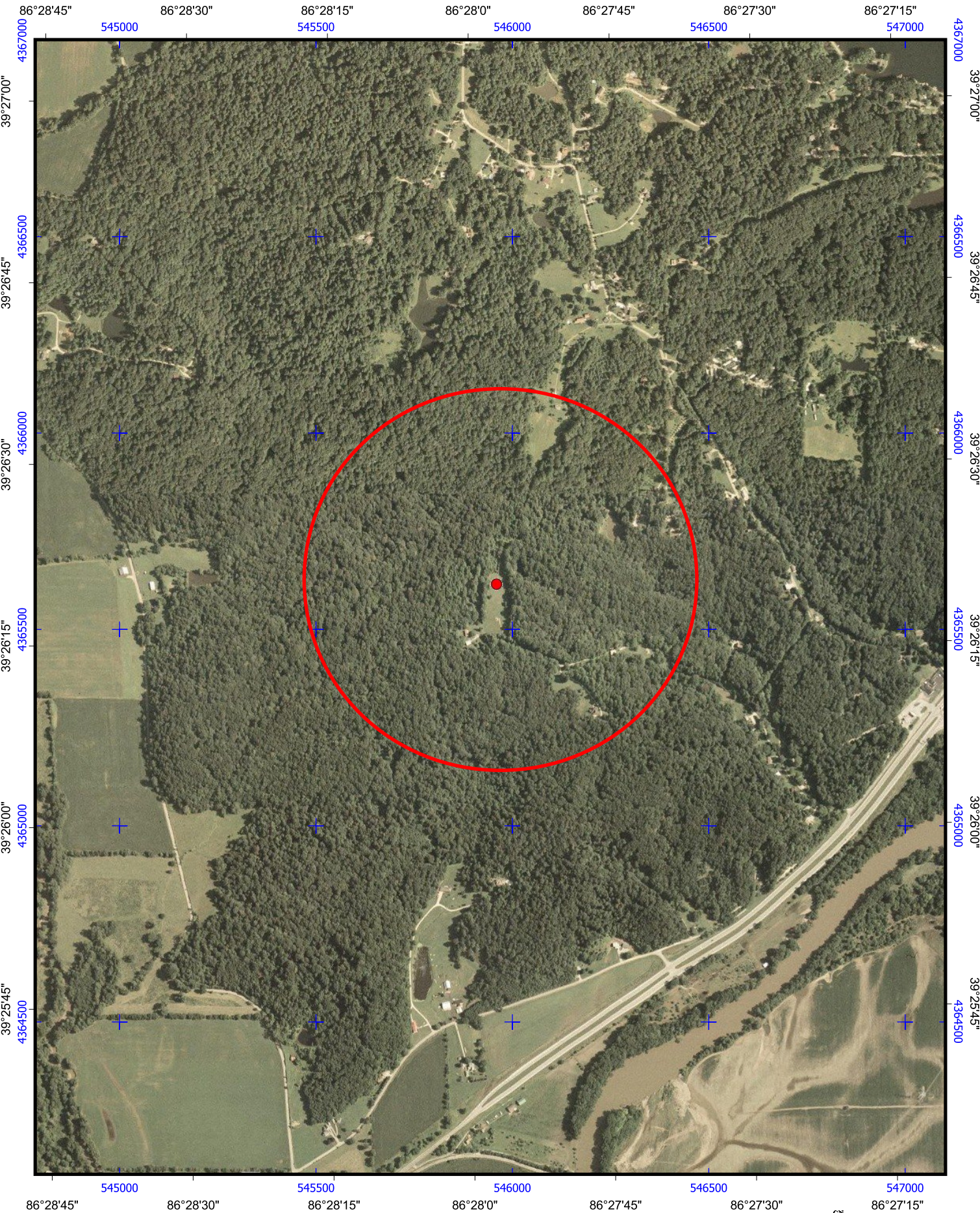
Elevation Pattern

Antenna: PSIFML-6-WS

3/4-Wave Bay Spacing

Angle	Relative Field	Angle	Relative Field	Angle	Relative Field
-90	0.001	-50	0.109	-10	0.261
-89	0.004	-49	0.106	-9	0.365
-88	0.008	-48	0.100	-8	0.472
-87	0.012	-47	0.092	-7	0.577
-86	0.016	-46	0.080	-6	0.676
-85	0.020	-45	0.065	-5	0.767
-84	0.024	-44	0.047	-4	0.847
-83	0.028	-43	0.027	-3	0.912
-82	0.032	-42	0.005	-2	0.960
-81	0.035	-41	0.018	-1	0.990
-80	0.039	-40	0.041	0	1.000
-79	0.042	-39	0.065	1	0.990
-78	0.045	-38	0.087	2	0.960
-77	0.047	-37	0.106	3	0.912
-76	0.049	-36	0.123	4	0.847
-75	0.050	-35	0.135	5	0.768
-74	0.051	-34	0.142	6	0.677
-73	0.052	-33	0.144	7	0.577
-72	0.051	-32	0.140	8	0.472
-71	0.050	-31	0.128	9	0.365
-70	0.047	-30	0.111	10	0.261
-69	0.044	-29	0.087	11	0.161
-68	0.040	-28	0.058	12	0.069
-67	0.035	-27	0.024	13	0.013
-66	0.028	-26	0.014	14	0.083
-65	0.021	-25	0.054	15	0.140
-64	0.013	-24	0.094	16	0.182
-63	0.003	-23	0.132	17	0.210
-62	0.007	-22	0.166	18	0.224
-61	0.017	-21	0.195	19	0.226
-60	0.029	-20	0.215	20	0.215
-59	0.040	-19	0.226	21	0.195
-58	0.052	-18	0.224	22	0.166
-57	0.064	-17	0.210	23	0.132
-56	0.075	-16	0.182	24	0.094
-55	0.085	-15	0.140	25	0.054
-54	0.093	-14	0.083	26	0.014
-53	0.100	-13	0.013	27	0.023
-52	0.106	-12	0.069	28	0.058
-51	0.108	-11	0.161	29	0.087

E-7 W231BT.CP Mod. Reduced Interfering Contour Aerial Photo



Registration 1028571

 [Map Registration](#)

Registration Detail

Reg Number	1028571	Status	Constructed
File Number	A0033934	Constructed	04/01/1988
FAA Study	CHI-OE-68-270	EMI	No
FAA Issue Date	07/09/1968	NEPA	No

Antenna Structure

Structure Type TOWER - Free standing or Guyed Structure used for Communications Purposes

Location (in NAD83 Coordinates)

Lat/Long 39-26-18.0 N 086-27-58.0 W .7 MI WNW INT HWYS 67 & 39

City, State MARTINSVILLE , IN

Center of
AM Array

Heights (meters)

Elevation of Site Above Mean Sea Level	Overall Height Above Ground (AGL)
249.9	68.0
Overall Height Above Mean Sea Level	Overall Height Above Ground w/o Appurtenances
317.9	67.1

Painting and Lighting Specifications

FCC Paragraphs 1, 3, 11, 21

.

Owner & Contact Information

FRN Licensee ID

Owner

RODGERS BROADCASTING CORP DBA = WCBK
WMCB RADIO
Attention To: DAVID RODGERS
1639 BURTON LN
MARTINSVILLE , IN 46151

P: (765)342-3394
E:

Contact

P:
E:

.

Last Action Status

Status	Constructed	Received	08/25/1997
Purpose	New	Entered	09/04/1997
Mode	Mail In (Manual)		

Related Applications