

EXHIBIT #1
ENGINEERING STATEMENT

Minnesota Public Radio
KWRV
Minor Change to
BLED-19930803KA

February 2006

CH 220A

0.1 kW H & V

This engineering statement supports the application filed by Minnesota Public Radio, Inc. to make a minor change to licensed NCE FM station KWRV, Sun Valley, Idaho. The applicant proposes to move the transmit location and increase the antenna height above mean sea level and above average terrain. No other changes are being proposed.

Page #3 is a computer generated map predicting the 60 dBu coverage contour. The city of license, Sun Valley, is completely encompassed by this contour. Eight evenly spaced radials and the N.G.D.C. 30 arc second terrain database were used to calculate the height above average terrain. A tabular listing of the distances to contour along the pertinent radials is found on page #4. A 60 dBu contour change area map is included as Page #5.

Exhibit #13 is a request for continuation of waiver to Section 73.1125, Main Studio, granted under license BLED-19930803KA.

Exhibit #15 is a single channel, contour to contour, allocation study showing that interference is neither caused nor received by an FM radio station, application for facilities or construction permit. Page #2 is an explanation of the methods used to prepare this study. There are no I.F. relationships. The proposal is not within 320 kilometers of the U.S. border with Canada or Mexico.

Exhibit #18 is a channel six television protection exhibit. KIVI is the only channel-six television station within the cutoff distance for channel 220 of 154 kilometers. This study was prepared using an FM study power of 0.1025 kW, which is 0.1 kW H + 0.1 kW V/40. The 6 dBu receiver directivity credit was applied. Page #2 is an enlargement of the area, showing no overlap. Pages #3 and #4 are distance to contour tables for both the FM and TV facilities.

Exhibit #22 shows compliance with the Commission's R.F. emission's standards.

Minnesota Public Radio, Inc. is aware of its responsibility under the rules relating to inter-modulation and objectionable blanketing interference. It will correct any such interference, at its own expense, within a period of one year from commencement of broadcasting at the proposed transmitter site. Corrections shall employ traditional means such as filters, traps and tuning adjustments.

Page #6 of this exhibit (Ex. # 1) is a declaration made by the preparer, Kate Michler, attesting to her qualifications.

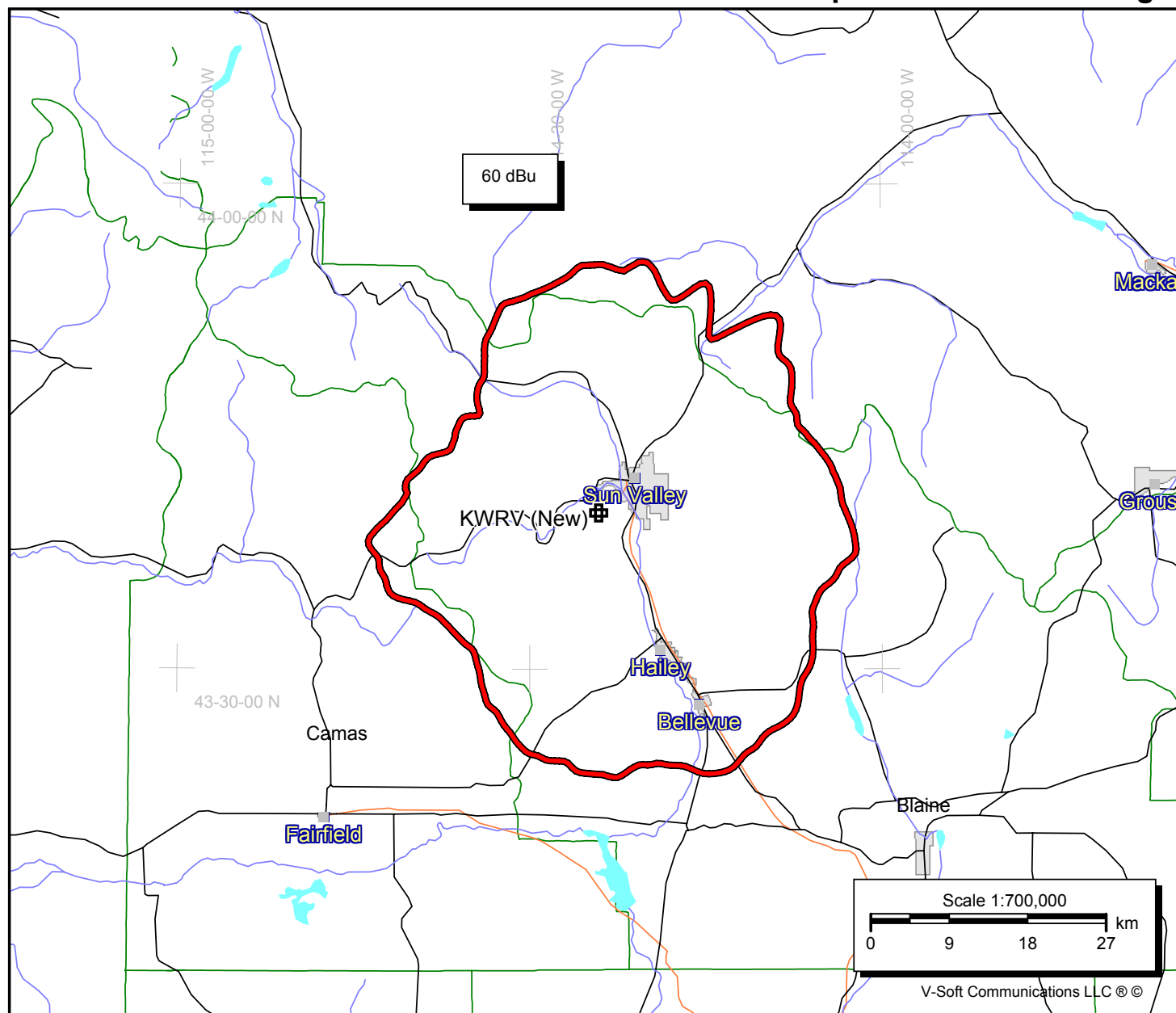
Proposed 60 dbu Coverage

KWRV (New)
 BLED19930803KA
 Latitude: 43-39-41 N
 Longitude: 114-24-08 W
 ERP: 0.10 kW
 Channel: 220
 Frequency: 91.9 MHz
 AMSL Height: 2755.2 m
 HAAT: 656.7 m
 Horiz. Pattern: Omni
 Vert. Pattern: No

Population: 17,395
 Area: 2206.52 sq. km

2/23/2006

V Doug Vernier
 721 West 1st Street, Suite A
 Cedar Falls, Iowa 50613
 Telecommunications Consultants



N. Lat. = 43 39 41 W. Lng. = 114 24 08
 HAAT and Distance to Contour - FCC Method - 30 Arc. Sec.
 KWRV Proposed 60 dBu Coverage Contour

Azi.	AV EL	HAAT	ERP kW	dBk	Field	60-F5
------	-------	------	--------	-----	-------	-------

000	2023.6	731.6	0.1000	-10.00	1.000	28.47
045	1976.0	779.2	0.1000	-10.00	1.000	29.43
090	2025.5	729.7	0.1000	-10.00	1.000	28.43
135	1851.9	903.4	0.1000	-10.00	1.000	31.97
180	1949.2	806.0	0.1000	-10.00	1.000	29.97
225	2324.9	430.3	0.1000	-10.00	1.000	21.41
270	2240.5	514.7	0.1000	-10.00	1.000	23.66
315	2396.5	358.7	0.1000	-10.00	1.000	19.65

Ave E1= 2098.49 M HAAT= 656.71 M AMSL= 2755.2 M

KWRV Proposed 60 dBu Change Area

KWRV (New)
 (Modified)
 Latitude: 43-39-41 N
 Longitude: 114-24-08 W
 ERP: 0.10 kW
 Channel: 220
 Frequency: 91.9 MHz
 AMSL Height: 2755.2 m
 HAAT: 656.7 m
 Horiz. Pattern: Omni
 Vert. Pattern: No

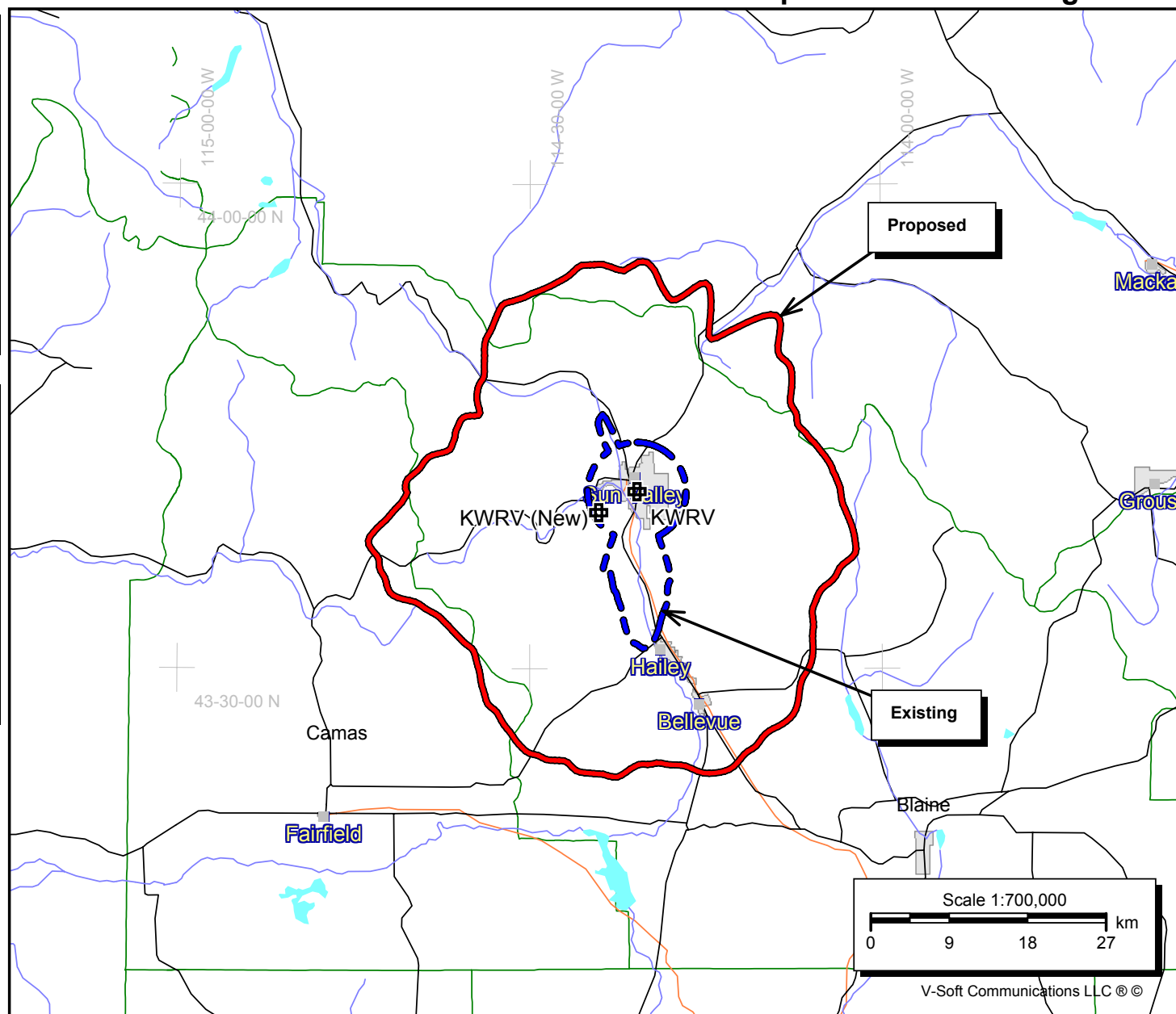
Pop = 17,395

KWRV
 BLED19930803KA
 Latitude: 43-40-59 N
 Longitude: 114-20-52 W
 ERP: 0.10 kW
 Channel: 220
 Frequency: 91.9 MHz
 AMSL Height: 2029.0 m
 HAAT: -156.0 m
 Horiz. Pattern: Omni
 Vert. Pattern: No

Pop = 6,973

2/23/2006

V
 Doug Vernier
 721 West 1st Street, Suite A
 Cedar Falls, Iowa 50613
 Telecommunications Consultants



V-Soft Communications LLC ©

Declaration:

I, Katherine A. Michler, have received a Bachelor of Science degree from the University of Northern Iowa, and;

That, I declare that I have received training as a technical consultant as a member of the staff of Doug Vernier Telecommunications Consultants, and;

That, I have apprenticed under Douglas Vernier for over eight years, and;

That, he has been active in broadcast consulting for over 30 years, and;

That, his qualifications are a matter of record with the Federal Communications Commission, and;

That, I am an Associate Member (#20792) of the Society of Broadcast Engineers, Indianapolis, Indiana, and;

That, the consulting firm of Doug Vernier Telecommunications Consultants has been retained by Minnesota Public Radio, St. Paul, Minnesota, and;

That, I have personally prepared these engineering showings, the technical information contained in same and the facts stated within are true to my knowledge, and;

That, under penalty of perjury, I declare that the foregoing is correct.

 _____ Katherine A. Michler

Executed on February 23, 2006