

AZIMUTH PATTERN INFORMATION

Model: JA/MS-16/14-17-20 SHC

Pattern: Broad Cardioid

Notes: UHF Slot Antenna



BROAD CARDIOID UHF SLOT ANTENNA ANTENNA PATTERN TABULATION

0 DEGREES = TRUE NORTH

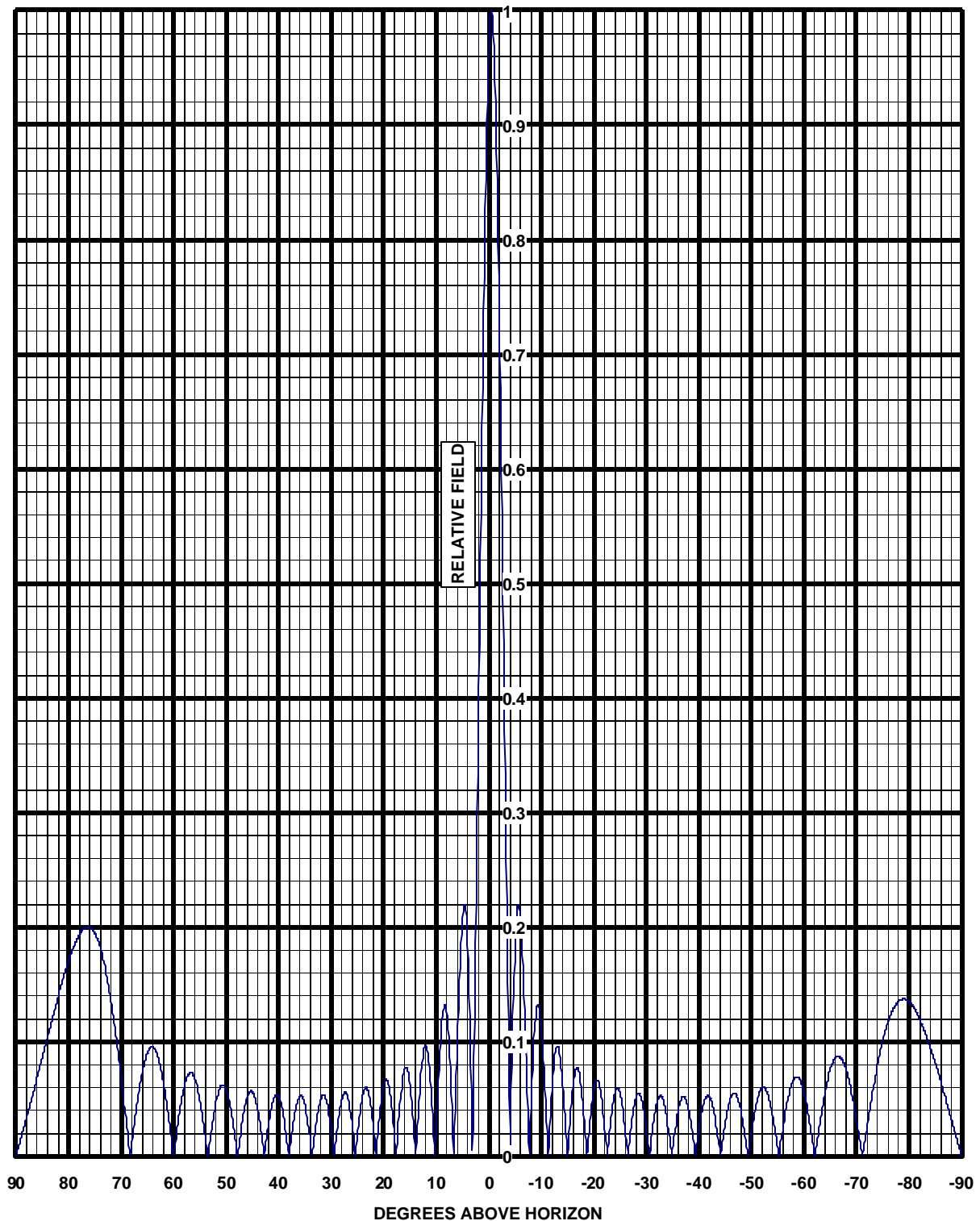
AZIMUTH	FIELD	dB
0	1.00	0.00
10	0.99	-0.09
20	0.96	-0.35
30	0.92	-0.72
40	0.92	-0.72
50	0.96	-0.35
60	0.98	-0.18
70	1.00	0.00
80	0.97	-0.26
90	0.92	-0.72
100	0.85	-1.41
110	0.72	-2.85
120	0.60	-4.44
130	0.44	-7.13
140	0.32	-9.90
150	0.25	-12.04
160	0.20	-13.98
170	0.21	-13.56
180	0.22	-13.15
190	0.21	-13.56
200	0.20	-13.98
210	0.25	-12.04
220	0.32	-9.90
230	0.44	-7.13
240	0.60	-4.44
250	0.72	-2.85
260	0.85	-1.41
270	0.92	-0.72
280	0.97	-0.26
290	1.00	0.00
300	0.98	-0.18
310	0.96	-0.35
320	0.92	-0.72
330	0.92	-0.72
340	0.96	-0.35
350	0.99	-0.09



6340 Sky Creek Drive
Sacramento, California 95828 USA

Telephone (916) 383-1177
Fax (916) 383-1182

COMPUTED ELEVATION PATTERN



Customer: Wyomedia Corp
Site: TBD
Channel: 14, 17, & 20

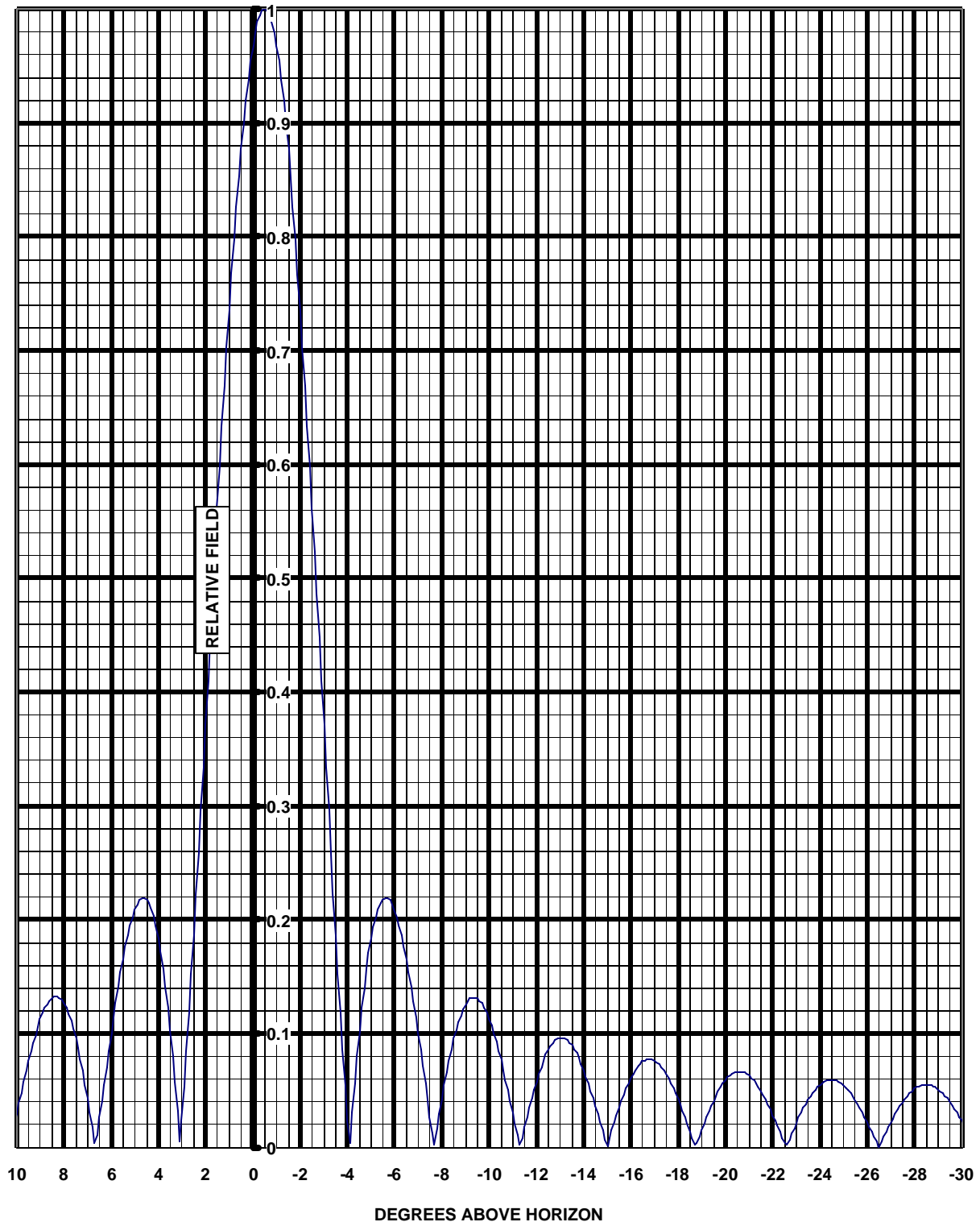
Model: JA-MS-16
Description: UHF Slot Antenna
-0.5° Beam Tilt, 0% Null Fill



6340 Sky Creek Drive
Sacramento, California 95828 USA

Telephone (916) 383-1177
Fax (916) 383-1182

COMPUTED ELEVATION PATTERN



Customer: Wyomedia Corp
Site: TBD
Channel: 14, 17, & 20

Model: JA-MS-16
Description: UHF Slot Antenna
-0.5° Beam Tilt, 0% Null Fill



6340 Sky Creek Drive
Sacramento, California 95828 USA

Telephone (916) 383-1177
Fax (916) 383-1182

Elevation Pattern Tabulation

ELEVATION PATTERN TABULATION RELATIVE FIELD VS ELEVATION ANGLE

<u>ELEVATION ANGLE</u>	<u>RELATIVE FIELD</u>	<u>ELEVATION ANGLE</u>	<u>RELATIVE FIELD</u>	<u>ELEVATION ANGLE</u>	<u>RELATIVE FIELD</u>
10	0.029	-26	0.022	-61	0.033
9	0.112	-27	0.022	-62	0.003
8	0.126	-28	0.051	-63	0.028
7	0.043	-29	0.051	-64	0.056
6	0.099	-30	0.023	-65	0.076
5	0.209	-31	0.017	-66	0.086
4	0.184	-32	0.046	-67	0.086
3	0.024	-33	0.051	-68	0.076
2	0.372	-34	0.030	-69	0.057
1	0.736	-35	0.006	-70	0.032
0	0.968	-36	0.039	-71	0.004
-1	0.968	-37	0.052	-72	0.026
-2	0.736	-38	0.041	-73	0.054
-3	0.372	-39	0.011	-74	0.080
-4	0.024	-40	0.023	-75	0.101
-5	0.183	-41	0.048	-76	0.117
-6	0.209	-42	0.052	-77	0.129
-7	0.100	-43	0.035	-78	0.135
-8	0.042	-44	0.004	-79	0.137
-9	0.125	-45	0.028	-80	0.135
-10	0.113	-46	0.050	-81	0.129
-11	0.030	-47	0.055	-82	0.120
-12	0.058	-48	0.040	-83	0.109
-13	0.096	-49	0.011	-84	0.096
-14	0.068	-50	0.021	-85	0.082
-15	0.000	-51	0.047	-86	0.066
-16	0.061	-52	0.060	-87	0.050
-17	0.076	-53	0.056	-88	0.034
-18	0.042	-54	0.036	-89	0.017
-19	0.015	-55	0.007	-90	0.000
-20	0.059	-56	0.025		
-21	0.063	-57	0.051		
-22	0.028	-58	0.067		
-23	0.021	-59	0.068		
-24	0.055	-60	0.056		
-25	0.055				

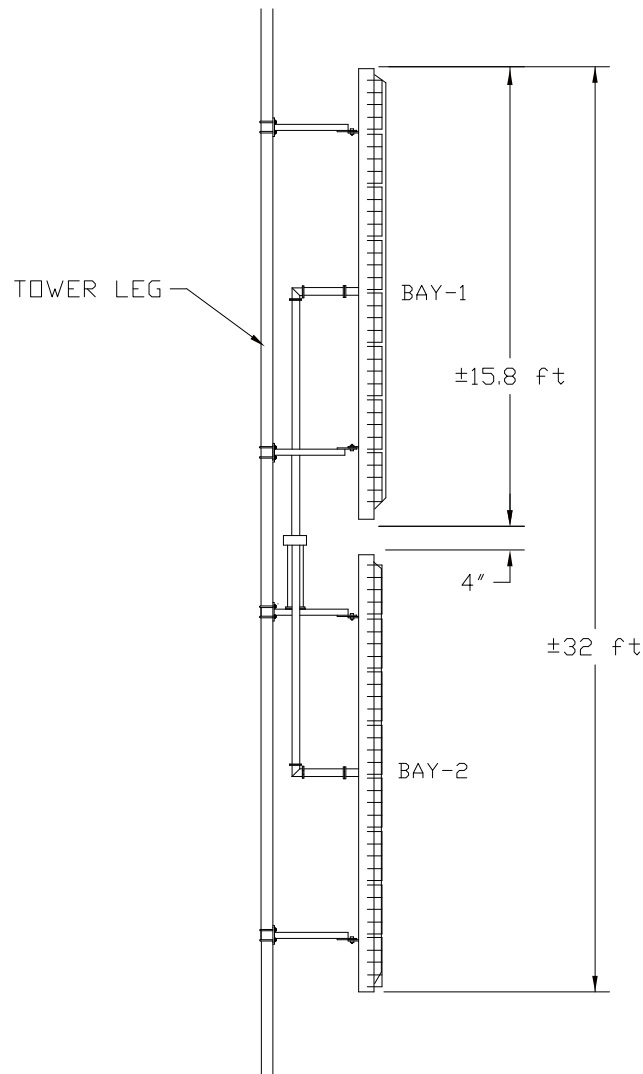
Customer: Wyomedia Corp
Site: TBD
Channel: 14, 17, & 20

Model: JA-MS-16
Description: UHF Slot Antenna
-0.5° Beam Tilt, 0% Null Fill



6340 Sky Creek Drive, Sacramento, California 95828
P.O. Box 292880, Sacramento, California 95829-2880

(916)383-1177 FAX (916)383-1182



REF RS-222-F
95 MPH WIND
1/2" AND NO ICE

V (no ice) = 4715 lbs (2140 kg)
V (1/2" ice) = 6205 lbs (2815 kg)

W (no ice) = 710 lbs (325 kg)
W (1/2" ice) = 1270 lbs (575 kg)

Includes Antenna, Radomes,
Feed, Mtg Brackets

JA/MS-16

10 Apr 2006

Drawing is preliminary and not specific to any
project.