

Received & Inspected

MAR 19 2018

FCC Mailroom

Submitted by:  
1TV.com Inc.  
4501 Broadway  
Miami, az 85539

2018 MAR 20 PM 2:39

INTERFERENCE COMPLAINT UNDER SECTION 74.1203

Rocket Radio Inc. filed a Modification of License requests for change of channel under the AM revitalization program that was granted by Construction Permit File No. BPFT-20160129AVI Facility ID No.155722 Call Sign K275CL on February 25, 2016 Rocket Radio Inc. ("RR"), is licensee of translator K275CL 102,9 (FM), Channel 275.

Rocket Radio Inc. is submitting a Complaint to the Commission pursuant to Section 74.1203 of the Commission's rules, this interference complaint to the Construction Permit BPFT-20170201ADT, Granted February 17, 2017 and as recently licensed by the License to Cover File No. BLFT-20170719AAV, Granted July 31, 2017 is resulting in listeners complaining of interference from the Co-channel K275CP, See attached Listeners Complaints, incorporated by reference hereto Exhibit 1 and potted google earth map with engineer declaration as Exhibit 2.

Mountain Community Translators, LLC was sent a cease operation or resolve the demand, however, Mountain Community Translators, LLC refused to shut down K275CL, Channel 275 (102.9 MHz), Phoenix, Arizona, Facility ID No. 138167. Therefore, such attempts have not resolved the interference from K275CP.

The interference continues to negatively impart the listeners of K275CL. This interference complaints is generated as a direct result of the translators operation on Channel K275CP (102.9 MHz), Phoenix, Arizona, Facility ID No. 138167 are submitted hereto at Exhibit1.

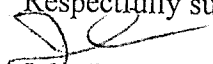
Rocket Radio Inc. hereby confirms that the complaining listeners are not employed of or principals of the licensee or any affiliated companies.

§ 74.1203 **Interference.provides in part (a)** An authorizes FM translator will not be permitted to continue to operate if it causes any interference, and must cease operation per 74.1203.. Thus, FM translator rules forbid interference from K275CL.

In this case the intensity of the interference is significantly harmful because K275CP is Co-Channel with K275CL (FM), Channel 275 (102.9 MHz), Phoenix, Arizona, Facility ID No. 138167

Consequently, the Commission should order (the License”) of Mountain Community Translators, LLC known as FM translator K275CP, Channel 275 (102.9 MHz), Construction Permit BPFT-20170201ADT, as recently licensed by the License to Cover File No. BLFT-2017O719AAV, Granted July 31, 2017 to discontinue service.

Respectfully submitted

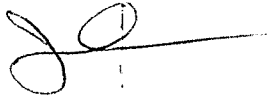
  
John Low President  
Rocket Radio Inc.  
4501 Broadway  
Miami, Az. 85539

## **CERTIFICATE OF SERVICE**

I hereby certify that I have, this First day of March 12, 2018, sent, by United States Mail, postage prepaid, a physical copy of the foregoing INTERFERENCE COMPLAINT UNDER SECTION 74.1203, to:

**Mountain Community Translators, LLC**  
**87 Jasper Lake Road**  
**Loveland CO 80537**

**Rocket Radio Inc.**  
**John Low President**  
**4501 Broadway**  
**Miami, Az. 85539**

A handwritten signature in black ink, appearing to be 'John Low', with a long horizontal stroke extending to the right.

## **Listeners Within or Near K275CL Translator 60 dBu**

### **06 March 2018 Doug Pelley Declaration K275CL**

**Exhibit 2** is a map which I plotted the locations of Beverly Cole's reception who has expressed concern over the loss of reception that results from K275CP operating on Channel 275 (102.9 MHz).

Translator FM K275CP is the cause of the interference to the reception of K275CL pursuant to the listener complaint. Pursuant to FCC staff where an interference complaint has been filed by a bona-fide listener and the interference damages the direct reception by the the off-the air signal of any authorized broadcast station, FCC rule 47 C.F.R. § 74.1203 is activated.

In the case of 47 C.F.R. § 74.1203, qualified interference complaint, the licensee must resolve the complaint or terminate the FM translator operations.

Please review listener Beverly Cole's plotted map at the following link

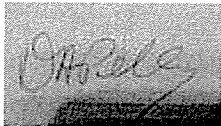
[https://drive.google.com/file/d/1RAkbENaVdLeiR69M\\_d0Q3deQAZKSVals/view](https://drive.google.com/file/d/1RAkbENaVdLeiR69M_d0Q3deQAZKSVals/view)

Please review listener Robert Stricklin plotted map at the following link

<https://drive.google.com/open?id=1RkcRq3kpezuvNI5jtu9cxoCPgAiqaxJd>

"The foregoing is true and correct, to the best of my personal knowledge, information, and belief, under penalty of perjury."

Respectfully submitted,



Doug Pelley  
Engineer K275CL

Exhibit 2

I cannot adequately hear BPFT-20160129AVI translator station K275CL (FM) at 102.9 MHz from the following area/area(s):

-----See Below -----

BPFT-20160129AVI

My reception of the K275CL (FM) at 102.9 MHz signal (on 102.9 MHz) is now being interfered with by another station signal bleeding over to 102.9 MHz, my favorite DJ is broadcasting on 102.9 FM, therefore, I wish to continue to listen to K275CL (FM) 102.9 MHz at the above location without being subject to interference caused by the interfering co-channel signal (102.9, translator K275CP, facility ID 138167).

Other than being a listener of K275CL (FM) at 102.9 MHz. I am not employed by the licensee of K275CL (FM) at 102.9 MHz. I understand that this statement may be filed with the Federal Communication Commission to protect the K275CL (FM) at 102.9 MHz signal and state under penalty of perjury that this statement is true and accurate.

Signed:  \_\_\_\_\_

Printed Name: Beverly Cole

Address: 6840 E. Pinchot Avenue, Scottsdale, Arizona

Daytime Phone number: 480-945-8244

Date: 2/22/18

The location description is the physical address of regular listening at home. Work, etc. If regular listening location is in a vehicle, then the location description identifies the points between which the regular listening takes place-such as the two exits or mile markers between which the regular listening takes place., or the cross streets for the road location where the listening regularly takes place.

I cannot adequately hear BPFT-20160129AVI translator station K275CL (FM) at 102.9 MHz from the following area/area(s):

IN THE MESA, ARIZONA AREA when I travel through that city.....

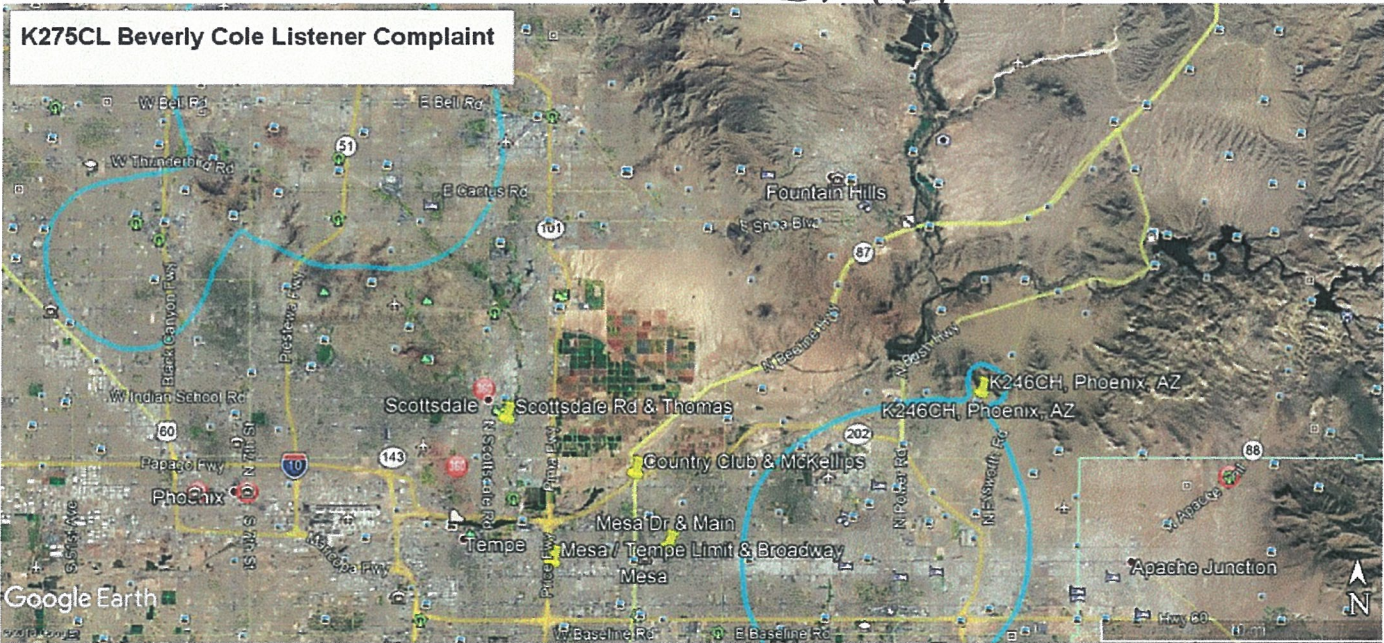
Along the 101 Freeway bordering the Mesa city line near Broadway Road. Talk show interfering with 102.9 music.

Traveling into north side of Mesa on McKellips Road just west of Country Club Drive near the Quik Trip store. Bad interference of a religious talk show??

Main Street and Mesa Drive in Mesa bad signal interference on 102.9

\_\_\_\_\_  
\_\_\_\_\_

Exhibit 2



**From:** victoria low <[v.low@att.net](mailto:v.low@att.net)>  
**Subject:** 1340 AM LETTER  
**Date:** March 5, 2018 at 5:07:27 PM PST  
**To:** [wb7cam@cox.net](mailto:wb7cam@cox.net)

LONG#-111.7083333 The interfering signal from translator K275CP facility ID 138167 is running an S7 signal level at my location. The receiver is a Icom706MKIIG with a unity gain antenna up at 25 feet. The interfering signal is totally over ridding KIKO at 102.9 MHZ.

Other than being a regular listener of K275CL, I am not connected with or employed by the licensee of K275CL. I understand that this statement may be filed with the Federal Communication Commission to protect the K275CL signal and state under penalty of perjury that this statement is true and accurate.

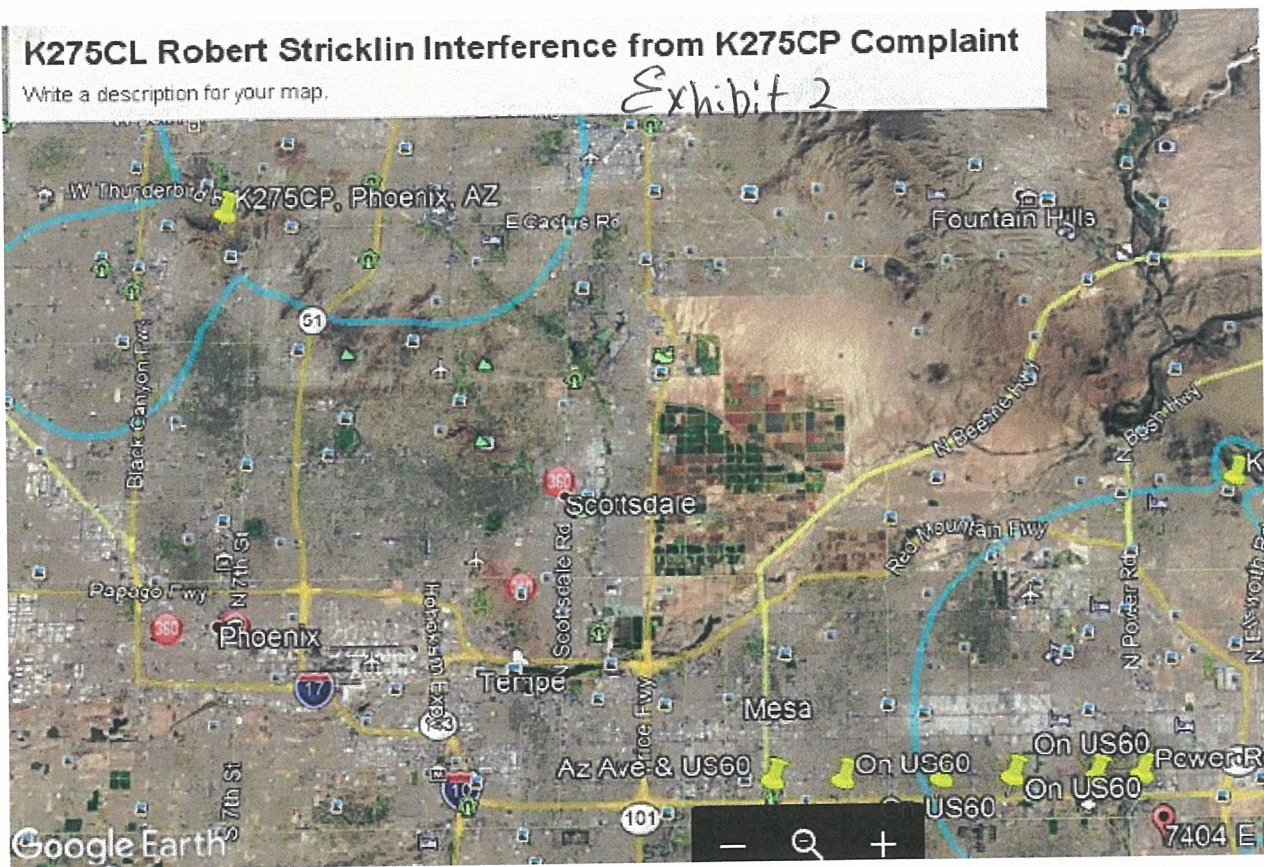
Address: 7404 E. Lompoc ave. Mesa AZ  
85209 Daytime Phone  
number: 1-480-793-0893 Date: March 13 2018

Cross streets are Power road and US60 to Apex US60 to Arizona av West of my location seven miles.

## K275CL Robert Stricklin Interference from K275CP Complaint

Write a description for your map.

Exhibit 2



Screen Shot 2018-03-14 at 8.59.27 AM.png

707 KB