

## EXHIBIT 13

### Ownership Information/Other Authorizations

The proposed Assignee, Griffin Licensing, L.L.C., is also the licensee of KOTV(TV), Tulsa, Oklahoma, Facility ID No. 35434. David F. Griffin holds 65.2% of the voting and equity interests in Griffin Licensing, L.L.C., and his brother John W. Griffin holds the remaining 34.8%. Except for the ownership of KOTV(TV) by Griffin Licensing, L.L.C., and the proposed ownership by Griffin Licensing, L.L.C. of the subject station, KWBT(TV), Muskogee, Oklahoma, Facility ID No. 78322, neither David Griffin nor John Griffin, nor any of their immediate family members, has any interest or connection with any other broadcast station, pending broadcast application, daily newspaper or any other medium of mass communication in the Tulsa, Oklahoma market.

A separate affiliate, Griffin Entities, L.L.C., is the licensee of KWTB(TV), Oklahoma City, OK, Facility ID No. 25382. Griffin Entities, L.L.C. is owned 65.2% by Kelley Holdings, Inc., and 34.8% by Grefleet, Inc. Kelley Holdings, Inc. is 100% owned by Griffin Capital Corporation. Griffin Capital Corporation is owned 69.39% by David F. Griffin Trust # 1, 15.22% by Grace Holly Griffin GST Exempt 2004 Family Trust, and 15.22% by John Wilkinson Griffin GST Exempt 2004 Family Trust. Grefleet, Inc. is 100% owned by Griffin Holdings, Inc. Griffin Holdings, Inc. is 86.5% owned by John Watson Griffin Trust # 1 and 13.5% by John W. Griffin Irrevocable Children's Trust.

As shown in the attached Nielsen information, KWTB(TV) is not in the same market as either of KOTV(TV) or KWBT(TV). KWTB(TV) operates in the Oklahoma City DMA, which is a separate DMA from the Tulsa DMA.

Please refer to the attached chart for the organizational diagram of ownership of the licensees of KWTB(TV) and KOTV(TV), and the proposed ownership of KWBT(TV).

The members, manager and officers of Griffin Licensing, L.L.C. are:

- David F. Griffin, Member, Manager and President
- John W. Griffin, Member
- Steve Foerster, Vice President
- Sue McMillon, VP/Asst. Secretary
- Joyce Reed, Vice President
- Ted W. Strickland, VP and CFO
- Terry Alexander, Secretary
- Garry Hills, Asst. Secretary

The members, managers and officers of Griffin Entities, L.L.C. are:

- Kelley Holdings, Inc., Member
- Grefleet, Inc., Member
- David F. Griffin, Manager and President
- Steve Foerster, Vice President
- Sue McMillon, VP/Secretary
- Joyce Reed, Vice President

Ted W. Strickland, VP and CFO  
Terry Alexander, Secretary  
Garry Hills, Asst. Secretary

The officers and directors of Kelley Holdings, Inc. are:

David F. Griffin, Chairman of the Board and President  
Kirsten Griffin, Director and Vice President  
Steve Foerster, Director and Vice President  
Ted Strickland, Director, VP and CFO  
Garry Hills, Director and Ass. Secretary  
Sue McMillon, VP and Asst. Secretary  
Terry Alexander, Secretary

The officers and directors of Grefleet, Inc. are:

John W. Griffin, Director and President  
Marti Killingsworth, Director  
Fern Sallee, Director  
Mindy Riddle, Director

The officers and directors of Griffin Capital Corporation are:

David F. Griffin, Chairman of the Board and President  
Kirsten Griffin, Director and Vice President  
Steve Foerster, Director and Vice President  
Ted W. Strickland, Director, VP and CFO  
Sue McMillon, VP and Asst. Secretary  
Terry Alexander, Secretary

The officers and directors of Griffin Holdings, Inc. are:

John W. Griffin, Director and President  
Marti Killingsworth, Director  
Michael Bauman, Director  
Samuel Ramos, Director  
Dick Hall, Director  
Fern Sallee, Director

John Griffin and Pauline Griffin are the trustees of the John W. Griffin Irrevocable Children's Trust.

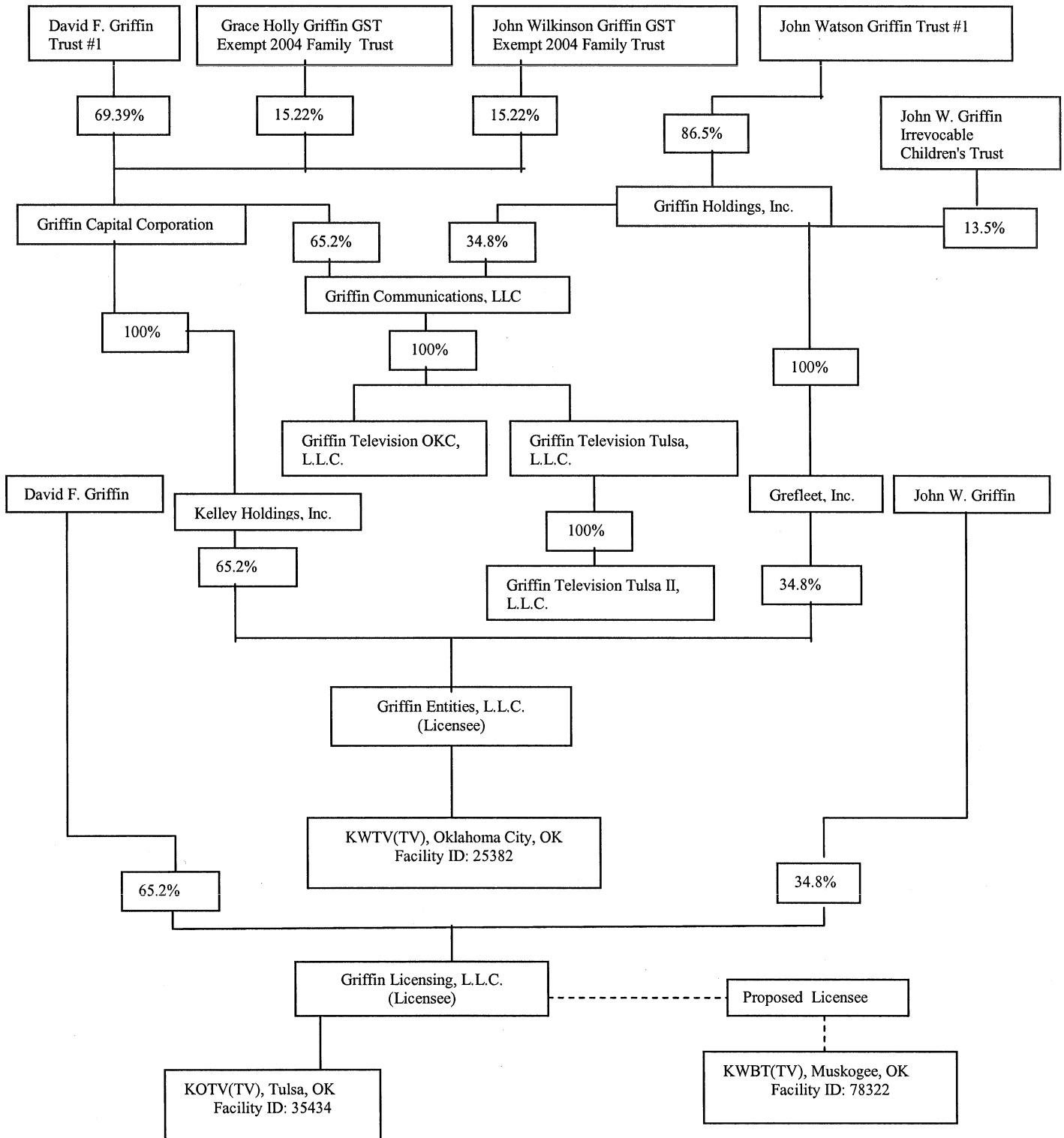
John W. Griffin is the trustee of the John Watson Griffin Trust # 1.

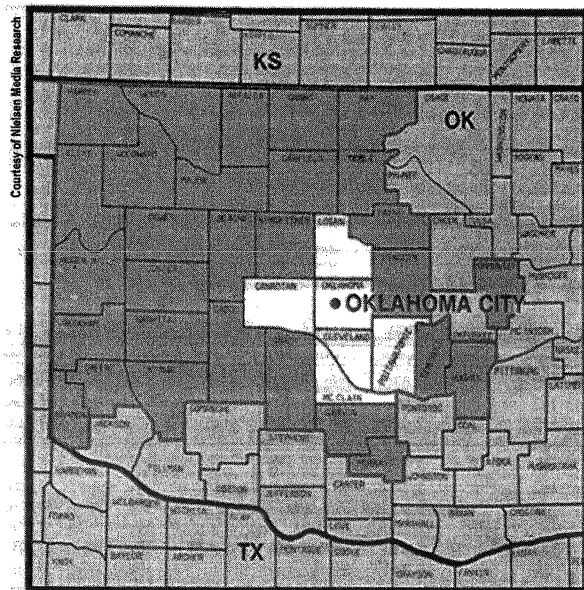
David F. Griffin is the trustee of the David F. Griffin Trust # 1.

Ted W. Strickland and Jay Wilkinson are the trustees of the Grace Holly Griffin GST Exempt 2004 Family Trust.

Ted W. Strickland and Jay Wilkinson are the trustees of the John Wilkinson Griffin GST Exempt 2004 Family Trust.

**Ownership Structure  
Proposed October 2005**





## Oklahoma City (45)

DMA TV Households: 647,390  
% of U.S. TV Households: .597

**KFOR-TV** Oklahoma City, ch. 4, NBC  
**KOCO-TV** Oklahoma City, ch. 5, ABC  
**KWTV** Oklahoma City, ch. 9, CBS  
**\*KWET** Cheyenne, OK, ch. 12, ETV  
**\*KETA** Oklahoma City, ch. 13, ETV  
**KTBO-TV** Oklahoma City, ch. 14, IND  
**KOKH-TV** Oklahoma City, ch. 25, Fox  
**KQOK** Shawnee, OK, ch. 30, IND  
**KEYU** Elk City, OK, ch. 31, IND  
**KOCB** Oklahoma City, ch. 34, IND  
**KUOK** Woodward, OK, ch. 35, IND  
**KAUT-TV** Oklahoma City, ch. 43, IND  
**KOCM** Norman, OK, ch. 46, IND  
**KSBI** Oklahoma City, ch. 52, IND  
**KOPX** Oklahoma City, ch. 62, IND

DMA Counties	State	TV Households	DMA Counties	State	TV Households
Alfalfa	OK	2,070	Kingfisher	OK	5,240
Beckham	OK	7,372	Kiowa	OK	4,140
Blaine	OK	4,130	Lincoln	OK	12,360
Caddo	OK	10,740	Logan	OK	12,770
Canadian	OK	33,290	Major	OK	2,940
Cleveland	OK	83,010	McClain	OK	10,690
Custer	OK	9,900	Murray	OK	4,990
Dewey	OK	1,780	Noble	OK	4,420
Ellis	OK	1,620	Okfuskee	OK	4,090
Garfield	OK	22,560	Oklahoma	OK	271,5
Garvin	OK	10,79020	Payne	OK	27,300
Grady	OK	17,590	Pottawatomie	OK	25,730
Grant	OK	1,960	Roger Mills	OK	1,320
Greer	OK	2,080	Seminole	OK	9,350
Harmon	OK	1,180	Washita	OK	4,410
Harper	OK	1,480	Woods	OK	3,530
Hughes	OK	5,290	Woodward	OK	6,960
Kay	OK	18,790			

## Omaha (77)

DMA TV Households: 389,270  
% of U.S. TV Households: .359

**KMTV** Omaha, ch. 3, CBS  
**WOWT** Omaha, ch. 6, NBC  
**KETV** Omaha, ch. 7, ABC  
**KXVO** Omaha, ch. 15, IND  
**\*KYNE-TV** Omaha, ch. 26, ETV  
**\*KBIN** Council Bluffs, IA, ch. 32, ETV  
**\*KHIN** Red Oak, IA, ch. 36, ETV

DMA Counties	State	TV Households	DMA Counties	State	TV Households
Cass	IA	6,130	Colfax	NE	3,650
Crawford	IA	6,360	Cuming	NE	3,960
Fremont	IA	3,160	Dodge	NE	14,640
Harrison	IA	6,270	Douglas	NE	185,230
Mills	IA	5,470	Johnson	NE	1,880
Montgomery	IA	4,670	Nemaha	NE	2,950
Page	IA	6,510	Otoe	NE	6,150
Pottawattamie	IA	34,260	Platte	NE	12,290
Shelby	IA	5,150	Richardson	NE	3,810
Atchison	MO	2,570	Sarpy	NE	46,720
Burt	NE	3,080	Saunders	NE	7,650
Cass	NE	9,540	Washington	NE	7,170

