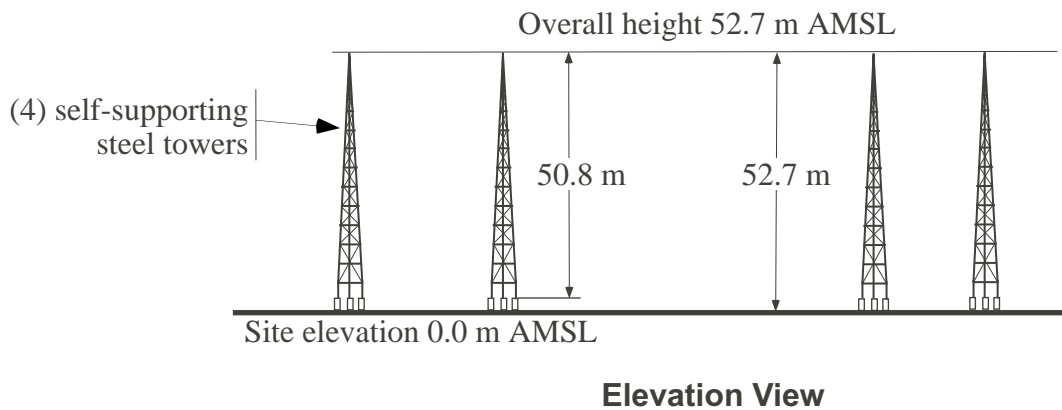
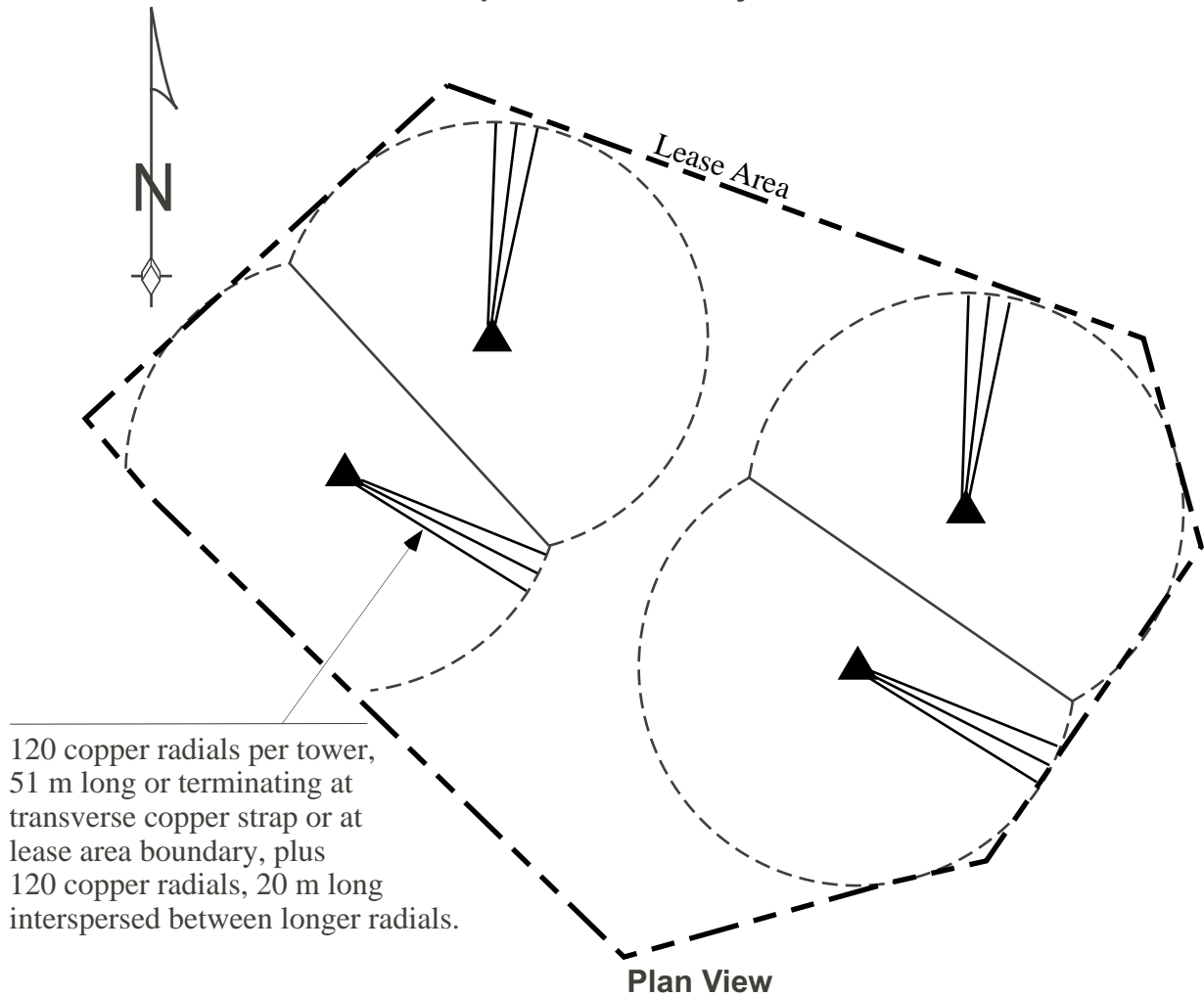


Radio Station KDYA • 1190 kHz, Class D • Vallejo, California

Proposed Antenna System



Center of Array Geographic 38° 08' 03" N
Coordinates (NAD 27) 122° 25' 32" W

50 meters 0 50 100

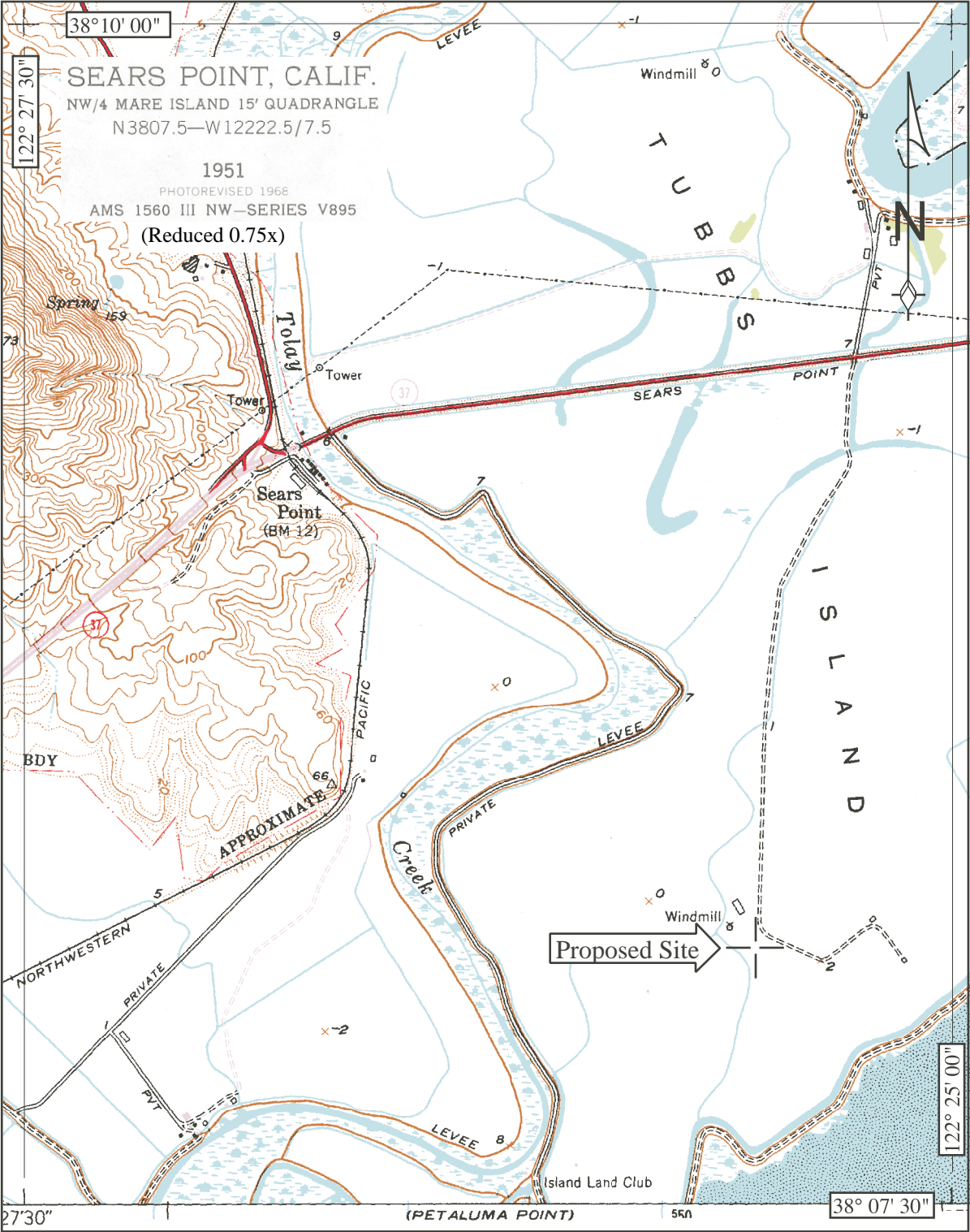


HAMMETT & EDISON, INC.
CONSULTING ENGINEERS
SAN FRANCISCO

060223
Exhibit 11A

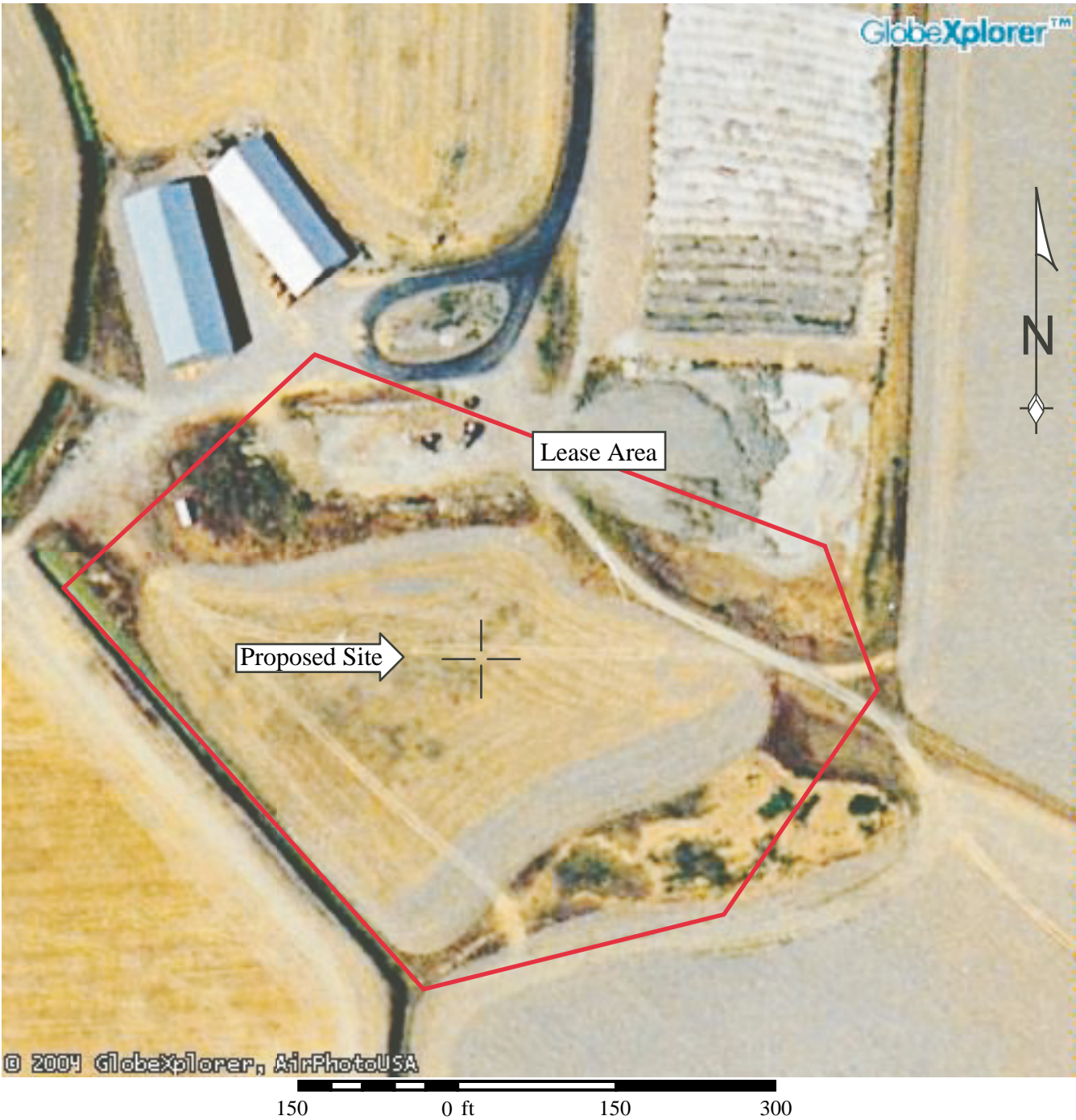
Radio Station KDYA • 1190 kHz, Class D • Vallejo, California

Proposed Site



HAMMETT & EDISON, INC.
CONSULTING ENGINEERS
SAN FRANCISCO

Aerial Photograph



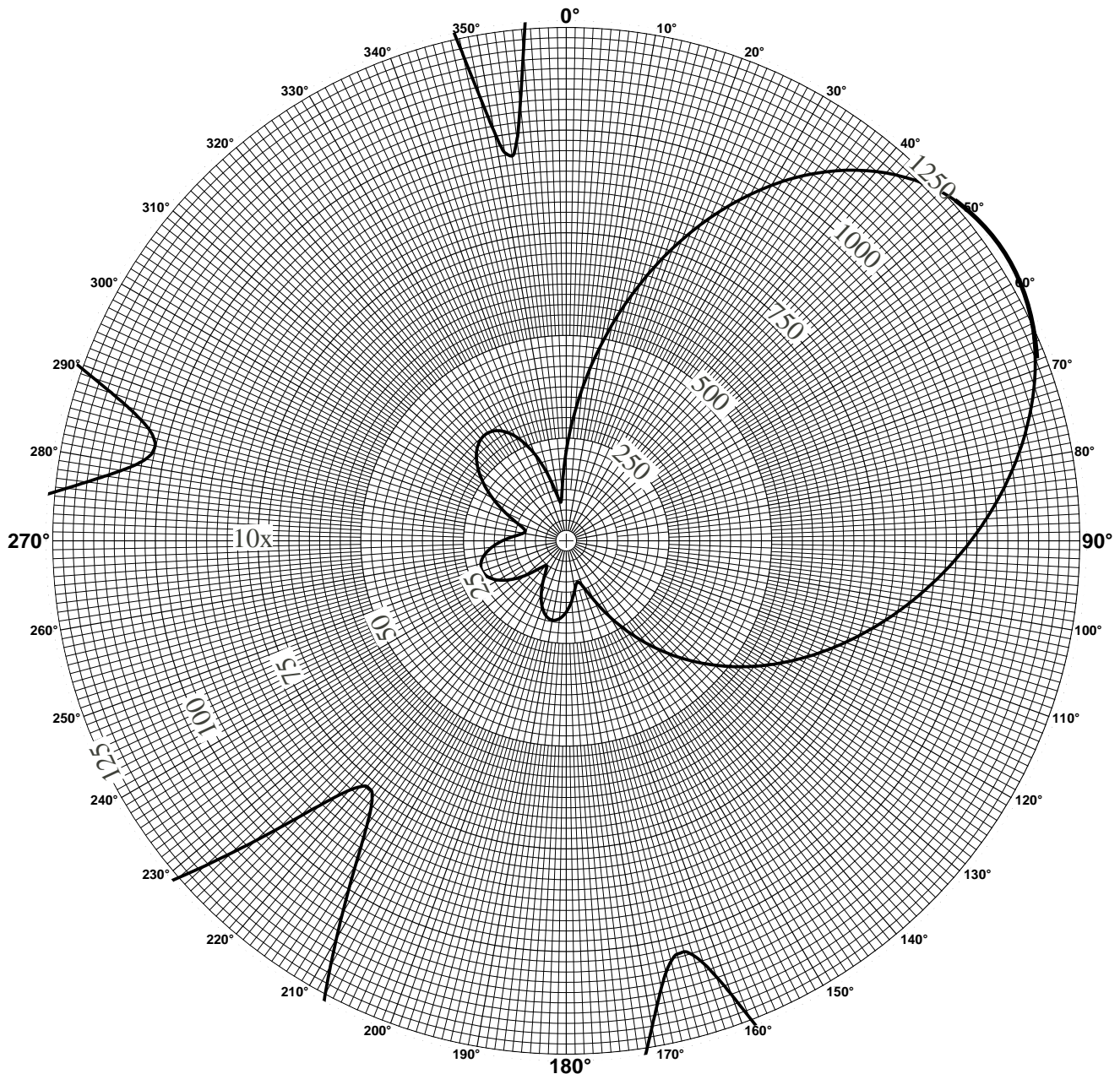
Aerial photo from Mapquest.com



HAMMETT & EDISON, INC.
CONSULTING ENGINEERS
SAN FRANCISCO

Radio Station KDYA • 1190 kHz, Class D • Vallejo, California

Proposed Daytime Standard Pattern (mV/m @ 1 km)
FCC Form 301 §III-A, Question 7.



Standard Pattern Calculations

Theo. RMS	=	568.5 mV/m @ 1 km
k Factor	=	411.6
ERSS	=	885.4 mV/m @ 1 km
Nominal power	=	3.50 kW
Q	=	22.14 mV/m @ 1 km
Standard RMS	=	597.4 mV/m @ 1 km

Operating Parameters

Twr	Height	Bearing	Dist.	Field	Phase
1	72.6°	0.0°T	0.0°	1.000	0.0°
2	72.6	227.5	60.2	0.983	+144.3
3	72.6	110.1	150.7	1.048	-115.2
4	72.6	132.0	147.2	1.250	+35.5



HAMMETT & EDISON, INC.
CONSULTING ENGINEERS
SAN FRANCISCO

060223
Exhibit 11D1

Radio Station KDAY • 1190 kHz, Class D • Vallejo, California

Proposed Daytime Standard Pattern (mV/m @ 1 km)

Az	El: 0°	5°	10°	15°	20°	25°	30°	35°	40°	45°	50°	55°	60°
0°T	219.3	219.9	221.4	223.5	225.9	227.7	228.3	226.8	222.4	214.5	202.7	186.8	166.9
5°T	345.9	345.3	343.3	339.8	334.4	326.8	316.7	303.6	287.3	267.7	244.7	218.6	189.8
10°T	482.8	480.8	474.6	464.4	450.2	431.9	409.9	384.1	354.9	322.7	288.0	251.2	213.1
15°T	622.3	618.8	608.3	591.2	567.7	538.5	504.1	465.4	423.1	378.1	331.4	283.8	236.4
20°T	758.3	753.4	738.8	714.9	682.5	642.5	596.2	544.8	489.6	432.2	373.7	315.7	259.1
25°T	885.6	879.4	860.9	830.8	790.2	740.3	682.9	619.7	552.6	483.5	414.1	346.0	280.7
30°T	999.6	992.3	970.5	935.0	887.2	828.7	761.6	688.0	610.3	530.6	451.3	374.2	300.9
35°T	1096.6	1088.3	1063.9	1024.1	970.6	905.1	830.0	747.7	661.1	572.5	484.6	399.5	319.3
40°T	1173.9	1165.0	1138.7	1095.9	1038.1	967.4	886.3	797.5	703.8	608.1	513.2	421.6	335.4
45°T	1230.1	1220.9	1193.4	1148.8	1088.5	1014.6	929.6	836.3	737.8	636.9	536.8	440.0	349.0
50°T	1264.8	1255.4	1227.7	1182.5	1121.3	1046.1	959.3	863.8	762.5	658.5	554.8	454.5	359.9
55°T	1278.6	1269.4	1242.1	1197.5	1137.0	1062.3	975.7	880.0	777.9	672.7	567.3	464.9	368.1
60°T	1273.2	1264.4	1238.2	1195.2	1136.6	1064.0	979.5	885.4	784.4	679.7	574.3	471.3	373.5
65°T	1251.0	1242.7	1218.0	1177.4	1121.9	1052.7	971.6	880.8	782.6	680.0	576.0	473.7	376.1
70°T	1214.6	1206.9	1184.2	1146.6	1095.0	1030.2	953.7	867.3	773.2	674.1	572.8	472.4	376.0
75°T	1166.9	1160.0	1139.4	1105.3	1058.0	998.3	927.2	846.2	757.2	662.6	565.1	467.7	373.4
80°T	1111.0	1104.9	1086.5	1055.9	1013.3	959.0	893.8	818.8	735.6	646.2	553.4	459.7	368.4
85°T	1049.6	1044.2	1028.0	1001.0	963.0	914.3	855.1	786.4	709.3	625.8	538.1	449.0	361.3
90°T	984.9	980.2	966.1	942.5	909.0	865.6	812.5	750.1	679.4	602.0	520.0	435.8	352.3
95°T	918.8	914.8	902.7	882.1	852.9	814.6	767.2	710.9	646.6	575.4	499.3	420.5	341.6
100°T	852.7	849.3	838.9	821.2	795.7	762.1	720.1	669.8	611.6	546.7	476.6	403.4	329.4
105°T	787.3	784.4	775.5	760.3	738.3	709.0	672.0	627.2	575.0	516.3	452.2	384.8	316.0
110°T	723.0	720.6	713.0	700.0	681.0	655.5	623.2	583.7	537.3	484.5	426.6	364.9	301.5
115°T	659.7	657.6	651.2	640.1	623.9	602.0	574.0	539.5	498.6	451.8	399.9	344.1	286.2
120°T	596.9	595.2	589.8	580.6	566.9	548.4	524.4	494.8	459.3	418.3	372.4	322.6	270.3
125°T	534.2	532.8	528.4	520.9	509.8	494.5	474.6	449.7	419.6	384.3	344.4	300.5	253.8
130°T	471.0	469.9	466.6	460.9	452.3	440.3	424.5	404.3	379.5	350.1	316.1	278.2	237.1
135°T	407.0	406.3	404.2	400.3	394.4	385.8	374.2	358.9	339.5	315.8	287.8	255.8	220.3
140°T	342.4	342.1	341.2	339.4	336.3	331.4	324.1	313.7	299.8	281.9	259.8	233.6	203.6
145°T	278.0	278.1	278.6	279.0	278.9	277.7	274.8	269.5	261.0	248.7	232.4	211.9	187.2
150°T	215.6	216.2	218.0	220.6	223.5	226.1	227.5	227.0	223.7	216.9	206.0	190.8	171.3
155°T	159.3	160.3	163.1	167.5	172.9	178.7	183.8	187.5	188.9	187.0	181.1	170.9	156.0
160°T	117.6	118.6	121.3	125.9	131.9	138.9	146.2	152.8	157.6	159.7	158.1	152.3	141.6
165°T	104.2	104.2	104.4	105.4	107.9	112.2	118.2	124.9	131.3	135.9	137.5	135.2	128.3
170°T	120.2	118.9	115.4	110.6	105.9	102.9	103.0	106.0	111.0	116.2	119.7	120.1	116.1
175°T	148.0	145.8	139.6	130.2	119.1	108.4	100.4	96.7	97.5	101.0	104.9	106.9	105.2
180°T	173.6	170.9	163.0	150.9	135.8	119.8	105.3	94.8	89.9	90.2	93.1	95.7	95.6
185°T	190.5	187.5	178.9	165.5	148.5	129.6	111.3	96.0	86.3	82.8	83.9	86.4	87.3
190°T	196.0	193.0	184.4	170.8	153.5	133.9	114.1	96.7	84.0	77.6	76.9	78.8	80.2
195°T	189.3	186.6	178.6	165.9	149.6	131.1	112.0	94.6	81.1	73.4	71.3	72.6	74.1
200°T	171.2	168.8	162.0	151.2	137.2	121.2	104.6	89.1	76.8	69.2	66.7	67.6	69.1
205°T	143.9	142.1	137.0	128.8	118.1	105.8	92.9	80.8	71.0	64.9	62.8	63.5	64.9
210°T	112.0	110.9	107.7	102.5	95.6	87.7	79.3	71.4	64.9	60.9	59.5	60.1	61.4
215°T	84.6	84.0	82.5	79.9	76.5	72.4	68.0	63.7	60.1	57.8	57.0	57.5	58.5
220°T	78.2	77.6	76.2	73.9	70.9	67.7	64.3	61.1	58.3	56.4	55.5	55.6	56.1
225°T	99.0	97.9	94.7	89.8	83.7	77.2	70.8	65.2	60.5	57.2	55.1	54.3	54.2
230°T	131.9	130.0	124.8	116.6	106.5	95.3	84.2	74.2	65.9	59.7	55.7	53.5	52.6
235°T	164.5	162.1	155.1	144.1	130.3	114.9	99.3	84.8	72.5	63.1	56.7	53.0	51.3
240°T	191.3	188.4	180.1	167.0	150.4	131.7	112.5	94.4	78.7	66.3	57.6	52.4	50.0
245°T	209.4	206.2	197.0	182.6	164.2	143.3	121.8	101.1	83.0	68.4	58.0	51.7	48.6
250°T	217.4	214.1	204.6	189.6	170.4	148.6	125.9	104.1	84.7	68.9	57.5	50.5	47.1
255°T	215.0	211.8	202.4	187.6	168.7	147.1	124.6	102.8	83.4	67.5	55.9	48.7	45.5
260°T	202.8	199.8	191.0	177.2	159.4	139.2	118.0	97.6	79.3	64.2	53.1	46.4	43.6
265°T	182.1	179.4	171.7	159.5	143.8	125.9	107.2	89.1	72.8	59.4	49.5	43.6	41.5
270°T	155.5	153.3	146.9	136.8	123.9	109.2	93.9	78.9	65.3	53.9	45.3	40.5	39.4
275°T	127.5	125.8	121.1	113.6	103.9	92.9	81.2	69.6	58.6	48.9	41.5	37.4	37.3
280°T	106.5	105.5	102.4	97.4	90.9	83.1	74.3	65.0	55.4	46.2	38.8	34.8	35.4
285°T	105.2	104.5	102.2	98.5	93.2	86.4	78.1	68.4	57.8	47.1	37.9	32.9	33.9
290°T	127.7	126.7	123.9	119.1	112.3	103.4	92.4	79.7	65.6	51.4	38.9	31.9	32.9
295°T	164.7	163.2	158.8	151.5	141.3	128.4	112.9	95.4	76.6	57.9	41.4	31.7	32.4
300°T	206.4	204.3	198.0	187.6	173.4	155.7	135.0	112.2	88.2	64.7	44.3	32.1	32.7
305°T	246.9	244.1	235.8	222.2	203.8	181.3	155.4	127.3	98.4	70.5	46.6	32.6	33.8
310°T	281.9	278.5	268.3	251.7	229.4	202.3	171.7	138.8	105.5	73.9	47.5	33.1	36.0
315°T	308.2	304.2	292.3	273.1	247.4	216.5	181.7	144.9	108.2	74.0	46.6	34.1	39.5
320°T	322.9	318.5	305.2	283.9	255.6	221.7	183.9	144.4	105.5	70.4	44.3	36.4	44.7
325°T	323.5	318.8	304.6	282.0	251.9	216.2	176.9	136.3	97.1	63.3	42.0	41.5	52.1
330°T	308.0	303.1	288.6	265.5	235.0	199.1	159.9	120.2	83.2	54.5	43.3	50.5	61.9
335°T	275.0	270.2	256.1	233.6	204.2	169.9	133.2	97.2	66.8	49.9	52.3	63.9	74.0
340°T	224.7	220.3	207.3	186.8	160.4	130.3	99.7	73.1	57.8	59.0	70.2	81.7	88.6
345°T	160.4	156.8	146.3	130.1	110.1	89.7	73.5	67.3	72.7	84.2	95.7	103.4	105.5
350°T	101.3	99.5	94.8	89.0	84.6	84.5	90.0	99.8	110.9	120.8	127.1	128.6	124.4
355°T	119.7	120.5	123.0	127.4	133.7	141.3	149.5	157.1	162.6	165.0	163.2	156.6	145.0

Radio Station KDYA • 1190 kHz, Class D • Vallejo, California

Distance (km) to Proposed Daytime Contours

°T	5 mV/m	2 mV/m	0.5 mV/m	°T	5 mV/m	2 mV/m	0.5 mV/m	°T	5 mV/m	2 mV/m	0.5 mV/m
0	18.20	29.21	53.76	60	55.42	98.91	154.26	120	42.68	65.67	114.45
1	19.30	30.71	56.14	61	55.53	98.86	154.10	121	42.41	65.25	113.73
2	20.35	32.14	58.43	62	55.84	98.94	154.07	122	42.08	64.77	112.93
3	21.36	33.51	60.64	63	56.28	99.16	154.15	123	41.79	64.34	112.19
4	22.33	34.83	62.78	64	56.76	99.39	154.22	124	41.51	63.89	111.42
5	23.27	36.10	64.85	65	57.18	99.52	154.17	125	41.21	63.44	110.64
6	24.18	37.33	66.85	66	57.61	99.71	154.16	126	40.90	62.98	109.84
7	25.06	38.51	68.80	67	57.98	99.91	154.19	127	40.58	62.49	109.01
8	25.91	39.66	70.68	68	58.16	99.93	154.07	128	40.37	62.11	108.29
9	26.72	40.75	72.49	69	58.52	99.78	154.02	129	40.04	61.59	107.42
10	27.51	41.82	74.26	70	58.66	99.98	153.82	130	39.70	61.07	106.54
11	28.28	42.85	75.97	71	58.97	99.74	153.69	131	39.27	60.47	105.57
12	29.01	43.84	77.63	72	59.26	99.76	153.59	132	39.02	60.04	104.76
13	29.75	44.82	79.64	73	59.35	99.91	153.38	133	38.64	59.46	103.81
14	30.44	45.76	84.61	74	59.40	99.83	153.18	134	38.31	58.93	102.89
15	31.10	46.65	89.28	75	59.64	99.87	153.12	135	38.03	58.44	102.00
16	31.74	47.52	93.94	76	59.66	99.75	152.92	136	37.59	57.81	100.95
17	32.36	48.36	98.37	77	59.70	99.64	152.73	137	37.13	57.14	99.85
18	32.95	49.17	102.26	78	59.68	99.49	152.51	138	36.57	56.34	98.90
19	33.53	49.96	106.38	79	59.65	99.34	152.32	139	36.02	55.56	97.68
20	34.12	50.74	110.28	80	59.62	99.25	152.12	140	35.39	54.69	96.34
21	34.67	51.47	114.04	81	59.58	99.14	151.96	141	34.81	53.87	95.05
22	35.18	52.17	117.58	82	59.34	98.90	151.72	142	34.19	52.98	93.68
23	35.68	52.86	121.10	83	59.08	98.64	151.44	143	33.58	52.11	92.33
24	36.16	53.51	124.36	84	58.81	98.38	151.18	144	32.96	51.22	90.91
25	36.65	54.17	127.59	85	58.35	98.05	150.86	145	32.32	50.30	89.46
26	37.10	54.78	129.75	86	58.06	97.77	150.66	146	31.71	49.39	88.02
27	37.57	55.40	131.37	87	57.57	97.41	150.44	147	31.09	48.47	86.55
28	38.02	56.00	133.03	88	57.27	97.18	150.30	148	30.45	47.52	85.01
29	38.45	56.88	134.52	89	56.76	96.79	150.09	149	29.81	46.54	83.45
30	38.86	59.27	136.13	90	56.45	96.60	149.98	150	29.15	45.55	81.85
31	39.26	61.40	137.59	91	55.91	96.21	149.76	151	28.53	44.57	81.13
32	39.65	63.67	139.09	92	55.58	96.00	149.72	152	27.94	43.63	81.15
33	40.02	65.93	140.57	93	55.04	95.66	149.56	153	27.39	42.71	81.51
34	40.38	68.37	142.21	94	54.48	95.24	149.39	154	26.81	41.75	82.10
35	40.78	70.48	143.63	95	53.93	94.52	149.29	155	25.82	40.85	82.17
36	41.16	72.74	145.13	96	53.56	93.98	149.24	156	24.74	40.05	81.20
37	41.53	74.81	146.49	97	53.00	93.25	148.57	157	23.67	39.26	82.68
38	41.89	76.84	147.79	98	52.43	91.74	146.45	158	22.66	39.40	84.69
39	42.24	78.84	149.07	99	51.86	88.52	142.99	159	21.78	40.30	87.37
40	42.64	80.95	150.44	100	51.27	81.94	136.19	160	20.97	38.94	85.51
41	43.11	82.97	151.11	101	50.68	77.41	131.42	161	20.34	37.84	83.81
42	43.57	84.98	151.78	102	48.89	74.22	127.99	162	19.81	36.96	82.41
43	43.95	86.86	152.30	103	46.40	71.61	125.14	163	19.51	37.38	81.53
44	44.50	88.32	152.62	104	44.30	69.39	122.68	164	19.34	39.47	81.56
45	45.46	89.36	152.78	105	42.81	67.78	120.82	165	19.39	39.81	80.95
46	46.61	90.59	153.05	106	45.60	70.46	123.21	166	19.55	40.66	80.60
47	47.53	91.59	153.24	107	45.43	70.17	122.66	167	19.91	43.32	80.39
48	48.42	92.54	153.42	108	45.32	69.92	122.14	168	20.40	46.36	80.45
49	49.26	93.44	153.57	109	45.14	69.63	121.56	169	20.97	49.22	80.53
50	50.07	94.29	153.73	110	45.01	69.37	121.03	170	21.57	51.42	80.63
51	50.65	94.90	153.79	111	44.76	68.98	120.37	171	22.26	53.86	80.80
52	51.59	95.88	154.03	112	44.61	68.70	119.81	172	22.98	56.41	80.99
53	52.12	96.44	154.05	113	44.33	68.30	119.13	173	23.71	49.59	79.32
54	52.63	96.96	154.11	114	44.18	68.01	118.57	174	24.43	42.95	75.21
55	53.09	97.43	154.13	115	43.89	67.59	117.86	175	25.77	43.40	74.78
56	53.53	97.87	154.12	116	43.65	67.22	117.20	176	27.48	43.78	74.14
57	54.11	98.45	154.21	117	43.49	66.92	116.61	177	29.11	44.26	66.31
58	54.52	98.62	154.20	118	43.13	66.41	115.80	178	30.59	44.56	66.85
59	54.89	98.69	154.16	119	42.94	66.08	115.16	179	31.99	44.95	67.46

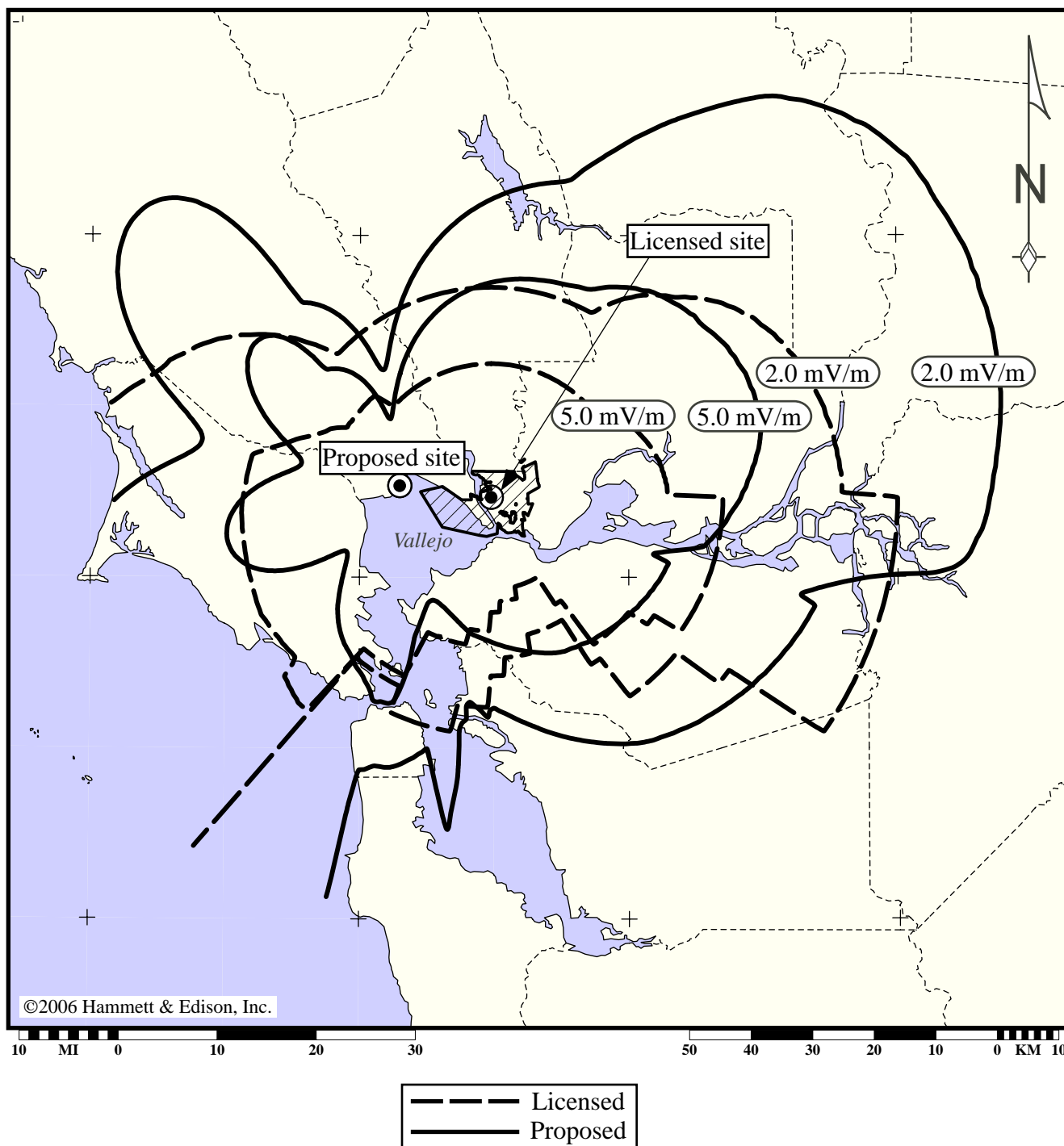
Radio Station KDYA • 1190 kHz, Class D • Vallejo, California

Distance (km) to Proposed Daytime Contours

<u>°T</u>	<u>5 mV/m</u>	<u>2 mV/m</u>	<u>0.5 mV/m</u>	<u>°T</u>	<u>5 mV/m</u>	<u>2 mV/m</u>	<u>0.5 mV/m</u>	<u>°T</u>	<u>5 mV/m</u>	<u>2 mV/m</u>	<u>0.5 mV/m</u>
180	33.31	45.31	68.01	240	27.07	65.75	216.99	300	26.83	50.73	170.41
181	34.47	45.61	68.49	241	27.51	67.23	219.89	301	27.51	51.84	134.77
182	35.26	45.79	68.84	242	27.88	68.49	222.46	302	28.22	52.97	133.06
183	35.45	45.83	69.02	243	28.21	69.79	224.93	303	28.84	53.99	130.14
184	35.32	45.75	69.07	244	28.50	70.59	226.75	304	29.50	55.02	127.19
185	35.22	45.70	69.12	245	28.74	71.41	228.46	305	30.06	55.93	120.84
186	35.35	46.03	69.53	246	28.97	72.11	229.92	306	30.55	56.75	115.59
187	35.12	46.47	120.60	247	29.16	72.65	231.09	307	31.11	57.63	116.92
188	33.76	46.61	183.56	248	29.30	72.85	231.80	308	31.46	58.28	118.02
189	32.90	52.10	204.93	249	29.40	73.08	232.40	309	31.95	59.03	119.20
190	32.22	67.86	220.62	250	29.46	72.78	232.34	310	32.28	59.62	120.18
191	31.44	78.76	231.32	251	29.49	71.54	231.21	311	32.51	60.09	121.03
192	30.92	77.31	229.60	252	29.47	67.35	227.04	312	32.76	60.55	121.82
193	30.47	75.75	227.61	253	29.42	62.35	221.92	313	32.97	60.96	122.52
194	29.92	74.04	225.31	254	29.32	60.98	220.28	314	33.06	61.24	123.06
195	29.27	71.86	222.36	255	29.18	59.22	218.13	315	33.05	61.40	123.45
196	28.66	69.67	219.18	256	29.01	57.02	215.42	316	32.98	61.46	123.74
197	28.17	68.58	216.92	257	28.80	55.79	213.54	317	32.86	61.46	123.93
198	27.74	67.54	214.51	258	28.55	55.55	212.53	318	32.62	61.33	123.96
199	27.30	66.24	211.70	259	28.27	55.18	211.27	319	32.24	61.03	123.80
200	26.78	64.68	208.46	260	27.94	54.65	209.72	320	31.80	60.65	123.52
201	26.25	63.21	205.00	261	27.58	53.99	207.92	321	31.14	60.04	122.98
202	25.64	61.34	200.96	262	27.18	52.94	205.61	322	30.40	59.33	122.31
203	25.02	59.25	196.53	263	26.75	51.98	203.30	323	29.35	58.29	121.29
204	24.36	56.87	191.55	264	26.29	50.68	200.43	324	28.29	57.21	120.19
205	23.62	54.43	186.27	265	25.78	49.26	197.27	325	26.78	55.66	118.59
206	22.90	51.82	180.65	266	25.25	47.74	193.91	326	25.18	54.00	116.84
207	22.13	49.26	174.78	267	24.69	46.62	190.33	327	23.08	51.82	114.53
208	21.18	46.18	168.22	268	24.11	45.70	186.44	328	22.23	49.11	111.67
209	20.18	43.15	161.53	269	23.49	44.72	182.31	329	22.09	45.83	107.50
210	19.26	40.12	154.67	270	22.86	43.71	178.04	330	21.89	41.68	99.82
211	18.30	37.06	147.64	271	22.21	42.67	173.33	331	21.70	36.59	92.47
212	17.40	34.32	140.94	272	21.55	41.60	167.82	332	21.47	33.67	85.19
213	16.54	32.33	134.27	273	20.89	40.52	162.26	333	21.22	33.32	60.36
214	15.75	31.02	128.06	274	20.21	39.43	156.58	334	20.94	32.94	59.73
215	15.07	29.87	122.57	275	19.56	38.34	150.95	335	20.61	32.50	59.03
216	14.51	28.92	118.06	276	18.93	37.30	145.51	336	20.26	32.03	58.26
217	14.09	28.21	114.58	277	18.34	36.30	140.01	337	19.87	31.49	57.40
218	13.84	27.80	112.71	278	17.80	35.39	135.13	338	19.44	30.91	56.47
219	13.76	27.71	112.44	279	17.32	34.59	130.57	339	18.97	30.27	55.44
220	13.86	27.94	113.78	280	16.93	33.92	126.63	340	18.46	29.56	54.32
221	14.17	28.51	116.21	281	16.64	33.42	123.51	341	17.90	28.80	53.10
222	14.59	29.31	119.70	282	16.47	33.13	121.39	342	17.27	27.94	51.75
223	15.16	30.35	123.94	283	16.42	33.05	121.51	343	16.62	27.04	50.33
224	15.83	31.54	129.27	284	16.52	33.22	123.45	344	15.93	26.08	48.80
225	16.56	32.84	134.94	285	16.75	33.61	124.00	345	15.19	25.04	47.16
226	17.35	34.20	141.36	286	17.11	34.23	125.40	346	14.41	23.96	45.44
227	18.15	35.60	148.27	287	17.59	35.04	127.53	347	13.61	22.82	43.65
228	18.97	37.00	155.12	288	18.10	35.96	130.20	348	12.81	21.68	41.84
229	19.79	39.69	161.85	289	18.63	36.95	133.14	349	12.06	20.60	40.13
230	20.59	42.57	168.41	290	19.31	38.11	131.25	350	11.43	19.69	38.68
231	21.38	45.40	174.75	291	19.96	39.29	136.18	351	11.03	19.09	37.74
232	22.14	48.17	180.75	292	20.74	40.59	141.45	352	10.94	18.96	37.53
233	22.88	50.86	186.54	293	21.47	41.86	146.43	353	11.22	19.38	38.19
234	23.60	53.32	191.79	294	22.21	43.14	151.43	354	11.84	20.28	39.63
235	24.27	55.80	196.88	295	23.05	44.51	156.58	355	12.71	21.54	41.62
236	24.90	58.14	201.70	296	23.80	45.78	160.66	356	13.74	23.00	43.93
237	25.52	60.24	205.94	297	24.61	47.09	163.75	357	14.84	24.55	46.38
238	26.07	62.15	209.86	298	25.35	48.33	166.66	358	15.97	26.13	48.87
239	26.60	64.13	213.70	299	26.07	49.51	168.50	359	17.09	27.69	51.34

Radio Station KDYA • 1190 kHz, Class D • Vallejo, California

Daytime Coverage Contours
Licensed and Proposed



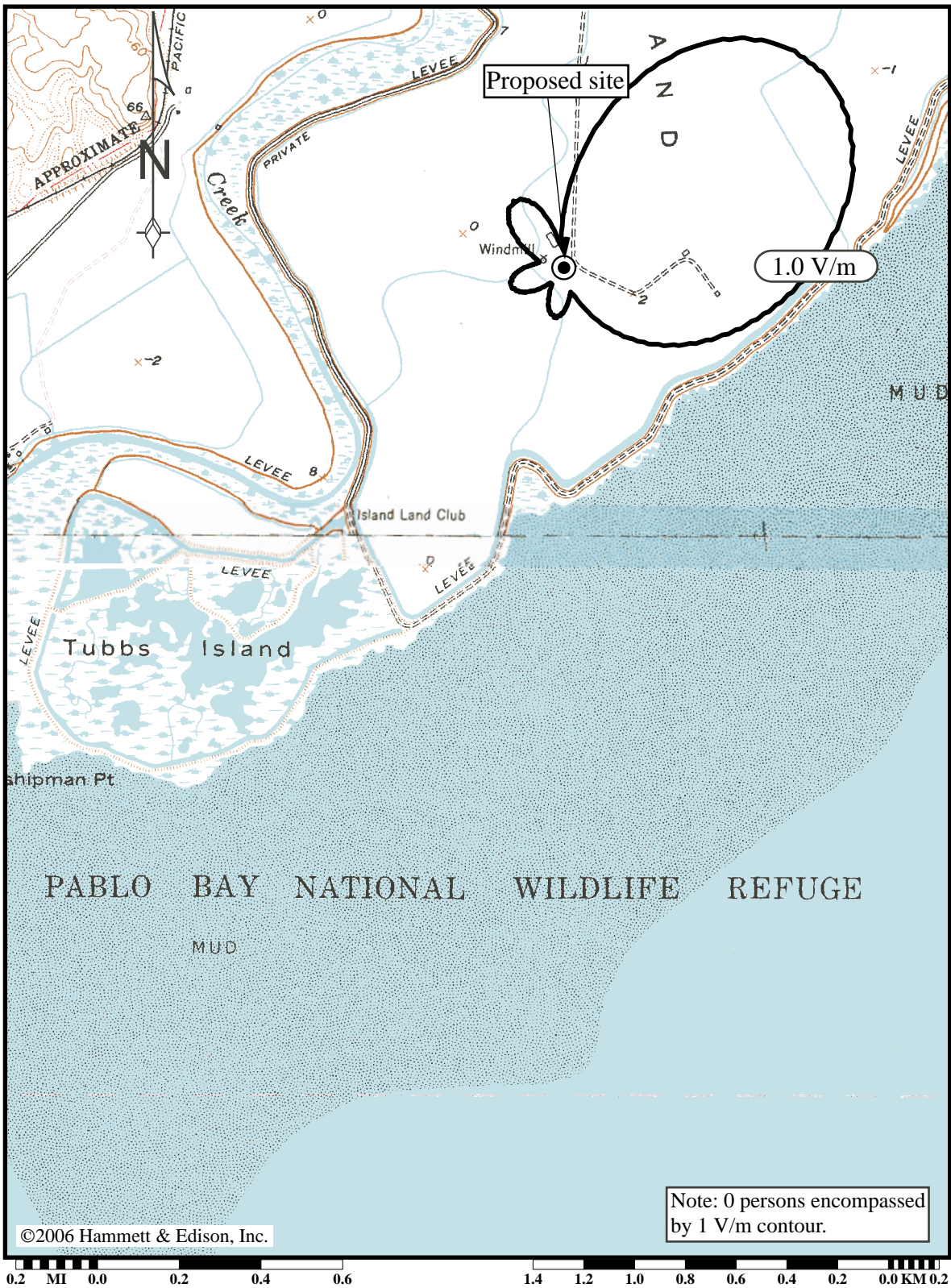
Lambert conformal conic map projection. Map data taken from Sectional Aeronautical Charts, published by the National Ocean Survey. Geographic coordinate marks shown at 15-minute increments. City limits shown taken from U.S. Census Bureau TIGER/Line 2000 data. Proposed contours projected using the FCC Figure M3 soil conductivities. Licensed contours projected using measured soil conductivity where available; see Exhibit 15F.



HAMMETT & EDISON, INC.
CONSULTING ENGINEERS
SAN FRANCISCO

060223
Exhibit 11E

Proposed Daytime Blanketing Contour

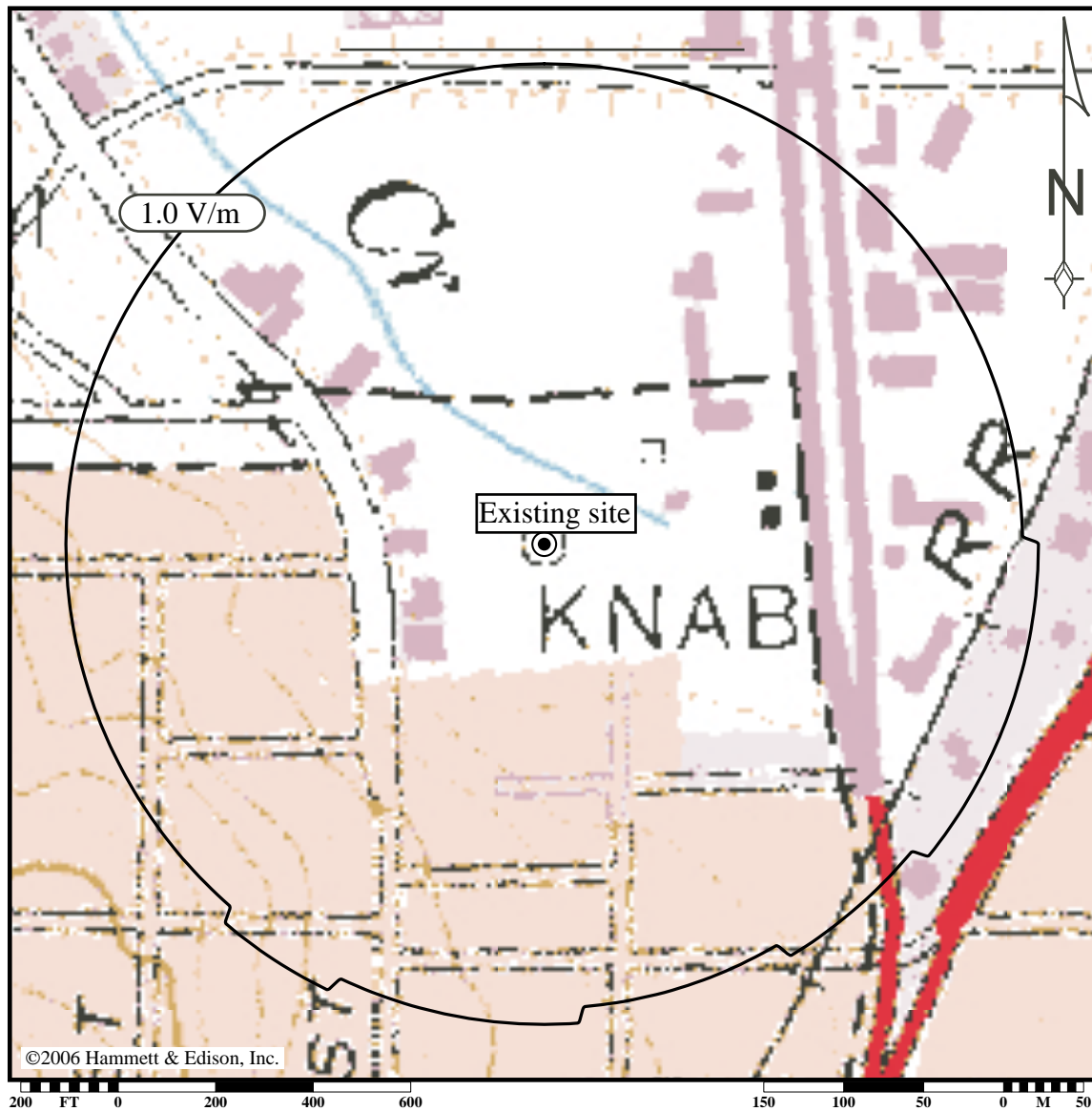


Polyconic map projection. Contour projected using FCC Figure M3 soil conductivities. Map data taken from USGS Sears Point, CA, 7.5 minute quadrangle.



Radio Station KDYA • 1190 kHz, Class D • Vallejo, California

Existing Daytime Blanketing Contour



Azimuthal equidistant map projection. Contour projected using measured soil conductivities where available; see Exhibit 15F1. Map data taken from USGS Mare Island, CA, 7.5 minute quadrangle.



HAMMETT & EDISON, INC.
CONSULTING ENGINEERS
SAN FRANCISCO

060223
Exhibit 11F2