

Report of Field Measurements of Radio Frequency Radiation (RFR) Electromagnetic Field Strength

**for the
Operation of
W250BD 97.9 MHz**

**Located atop the Heyburn Building
Louisville, Kentucky**

**Measurements collected on
April 13, 2017**

Prepared By	Prepared For
<p>Wavepoint Research, Inc.</p> <p>Wavepoint Research, Inc. PO Box 96 Crane, IN 47522</p> <p>Eric Wandel, P.E. eric@wavepointresearch.com (812) 453-2544 (mobile)</p>	<p>Educational Media Foundation</p> <p>5700 West Oaks Blvd Rocklin, CA 95765</p> <p>Attn: Steve Wilde swilde@kloveair1.com 530-574-3474</p>

Contents

- Report of Findings for RFR Electromagnetic Field Strength Measurements
- Exhibit A – Field Measurements -- Raw Data Tables / Charts
- Exhibit B – W250BD Construction Permit

Scope of Report

Educational Media Foundation (EMF) was granted a construction permit (permit file number BMPFT-20170208AHU, Exhibit B) to build a facility for W250BD 97.9 MHz at facility ID 141367 atop the Heyburn Building in Louisville, Kentucky. One condition of the construction permit is stated as:

Special operating conditions or restrictions:

4 Warning signs which describe the radiofrequency electromagnetic field radiation hazard must be posted at appropriate intervals. Access must be restricted to prevent the exposure of humans to RF emissions in excess of the FCC guidelines (OET Bulletin 65, Edition 97-01, released August 1997). Permittee shall submit documentation of compliance with this special operating condition when filing FCC Form 350, application for license.

This report describes the radio frequency (RF) measurement campaign conducted on the rooftop of the Heyburn Building to determine the level of total field strength and to plan corrective action in the event levels exceed allowable limits.

Summary of Findings

Lower Roof

In probe scans up to ~2 meters above the lower roof level, the maximum power density recorded on the lower roof area was 2.077% of the occupational/controlled limits. For frequencies of interest at this site, the general public limit is 20% of the occupational/controlled limit, therefore the percentage of general public limit is 10.385%. While the rooftop has controlled access, no levels exceeding either the general population or occupational/controlled limits were found. Measurements on the tower were not made.

Upper Roof

In probe scans up to ~2 meters above the upper roof level, the maximum power density recorded on the lower roof area was 73.91% of the occupational/controlled limits. For frequencies of interest at this site, the general public limit is 20% of the occupational/controlled limit, therefore the percentage of general public limit is 369.6%. The upper rooftop has controlled access, and further already has signs posted stating:

BEYOND THIS POINT:

Radio frequency fields at this site may exceed FCC rules for human exposure For your safety, obey all posted signs and site guidelines for working in radio frequency environments In accordance with Federal Regulations on frequency emissions.

Note that these signs are intended for the more restrictive case of levels exceeding occupational limits, which are likely to exist at heights above ~2m.

Measurement Plan

The measurements in this report were conducted by Eric Wandel, P.E. of Wavepoint Research, Inc. on Thursday, April 13, 2017. with W250BD operating at full licensed ERP of 250 W in the vertical polarization.

A Narda meter Model NBM-550 and shaped probe Model EA5091 for all measurements. The probe is an E-field shaped probe to the FCC limits and reports 0.5 to 600% of FCC occupational/controlled limits. This equipment data and calibration date are listed in Table 1.

Table 1 - Narda Meter and Probe Info

	Meter	Probe
Model	NBM-550	EA5091
Prod. ID	9562-004	US 01053
S/N	B-0054	01053
Cal Date	2/6/2017	2/3/2017
Cal Due Date	2/6/2019	2/3/2019

A photo of this model of Narda meter and probe is shown in Figure 1.



Figure 1 - Narda Meter Model NBM-550 with Shaped Probe Model EA5091

A Google image showing the general layout of the Heyburn Building rooftop is shown in Figure 2. The W250BD transmit antenna is located at the yellow circle. There is a "lower roof" which is the level that the large 17.5-ft square tower is mounted and an "upper roof" where an antenna for WFMP-LP is mounted on a short guyed tower. The antenna is shown in Figure 3 - note that the top bay is the transmit antenna and the bottom bay is for receive.

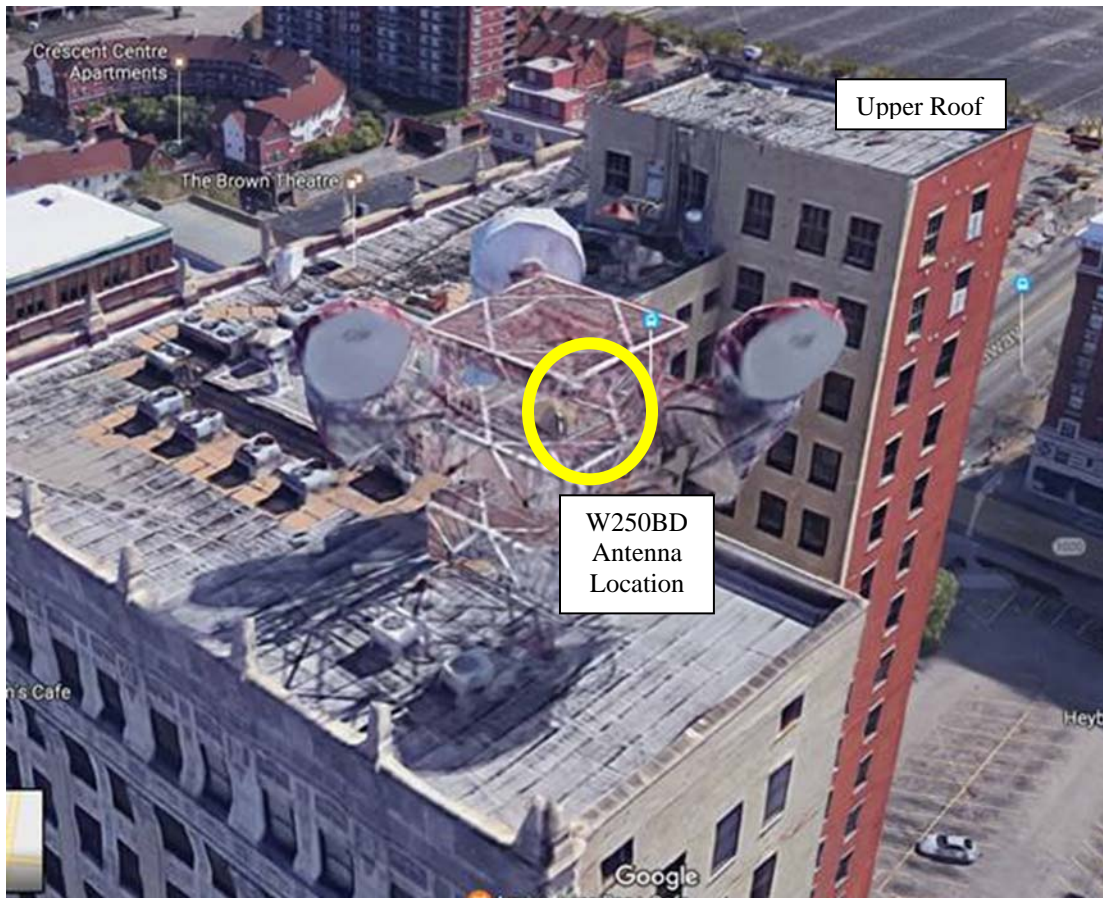


Figure 2 - Google Image (3D) of Heyburn Building Rooftop



Figure 3 - W250BD Antenna (Top Bay Transmits)

A 2D layout of the rooftop is shown in Figure 4 and Figure 5. Key measurement locations on the lower roof are marked as the circled A thru D.

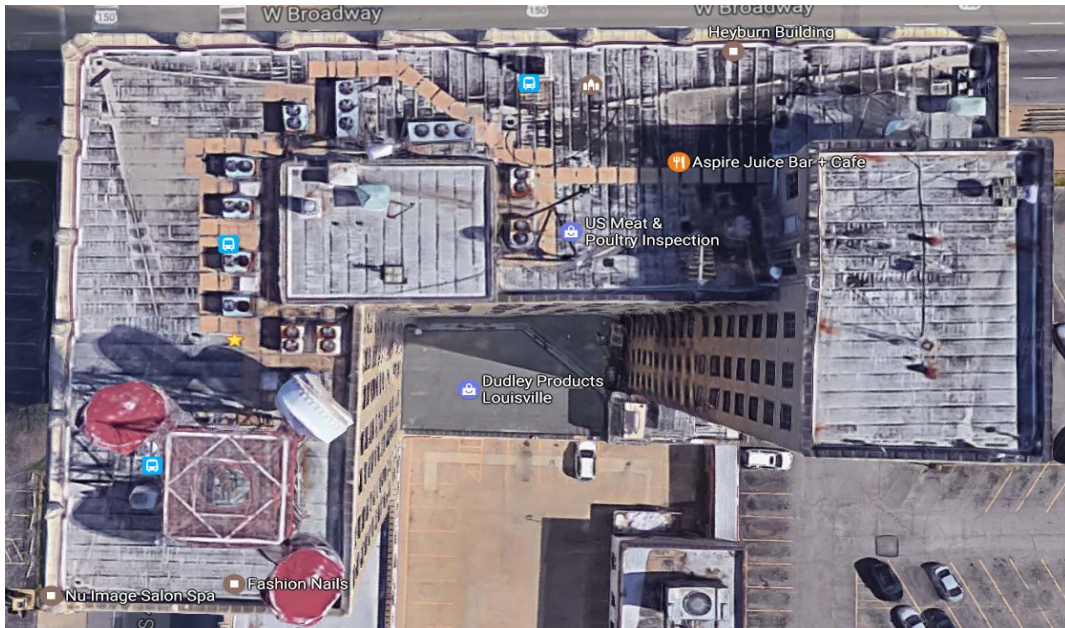


Figure 4 - Google Image (2D) of Heyburn Building Rooftop

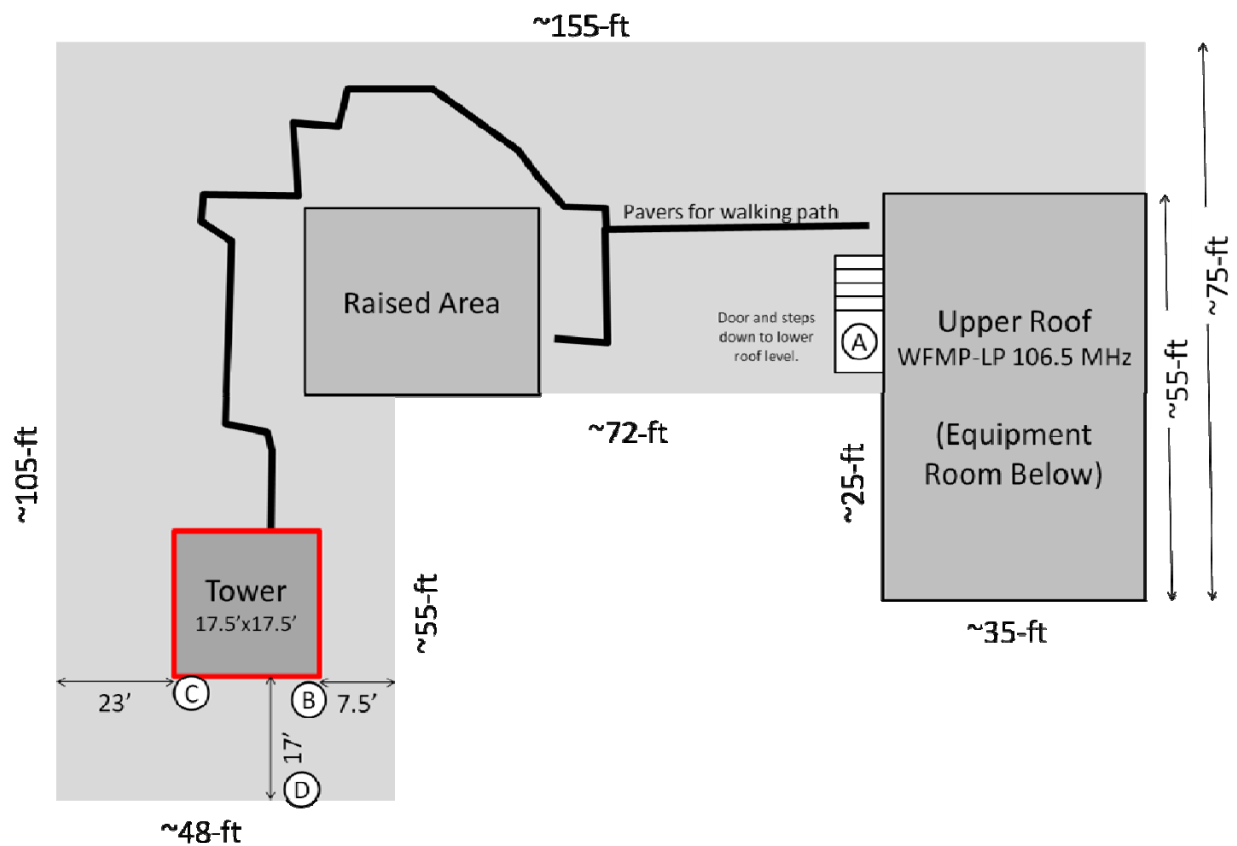


Figure 5 - Sketch of Heyburn Building Rooftop

Measurements Recorded

The data logger feature was set to record min/max/average power density readings at 1 second intervals. This mode of recording was used while traversing the rooftop survey for elevated field strength levels. Two datasets were recorded:

- Narda meter data file index 0124, 999 data points recorded on lower roof
- Narda meter data file index 0125: 417 data points recorded on upper roof

At key locations on the lower roof, such as at the landing by the door and in the vicinity below the W250BD antenna, extended data samples were collected while lingering in these locations. These location are shown as the circled A thru D on the sketch in Figure 5. The approximate time periods (GPS recorded times in data file) that data was collected while scanning the probe between approximately 2-ft and 7-ft off the roof level are listed in Table 2. No readings in excess of even general population limits were observed at these locations.

Table 2 - Lower Roof Key Location Recording Times

Location	Description	Start Time	Stop Time
A	Landing by door	13:52:00	13:53:00
B	SE leg of tower	13:58:00	13:59:00
C	Directly below antenna	13:59:00	14:00:00
D	At edge of roof in the direction the W250BD antenna is oriented	14:00:00	14:01:00

The readings from both data sets are listed in tabular format in Exhibit A of this report. Charts of this data are also presented in the following figures.

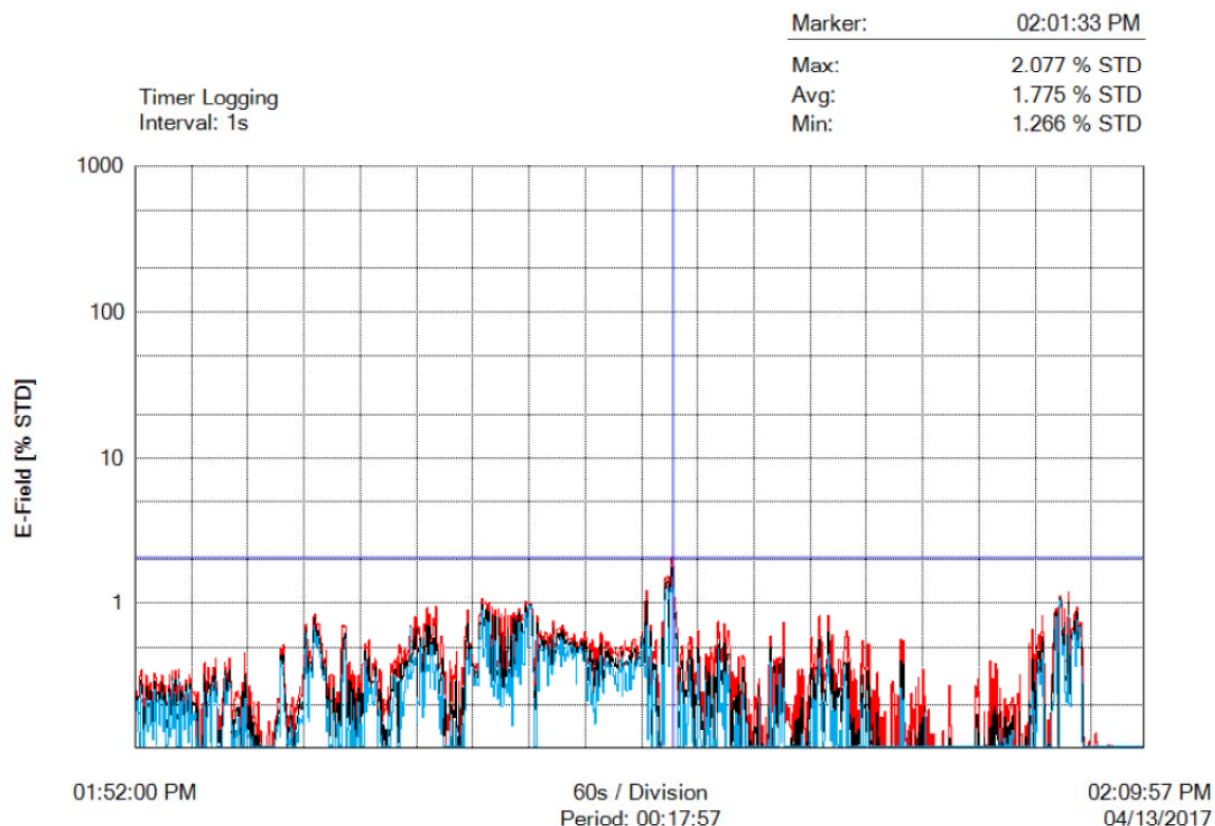


Figure 6 - Charted Measurements - Lower Roof

In probe scans up to ~2 meters above the lower roof level, the maximum power density recorded on the lower roof area was 2.077% of the occupational/controlled limits as shown in Figure 6. For frequencies of interest at this site, the general public limit is 20% of the occupational/controlled limit, therefore the percentage of general public limit is 10.385%. While the rooftop has controlled access, no levels exceeding either the general population or occupational/controlled limits were found.

Measurements on the tower were not made. It is recommended that a sign be posted at the base of the tower ladder warning of possible RF fields exceeding FCC rules for human exposure.

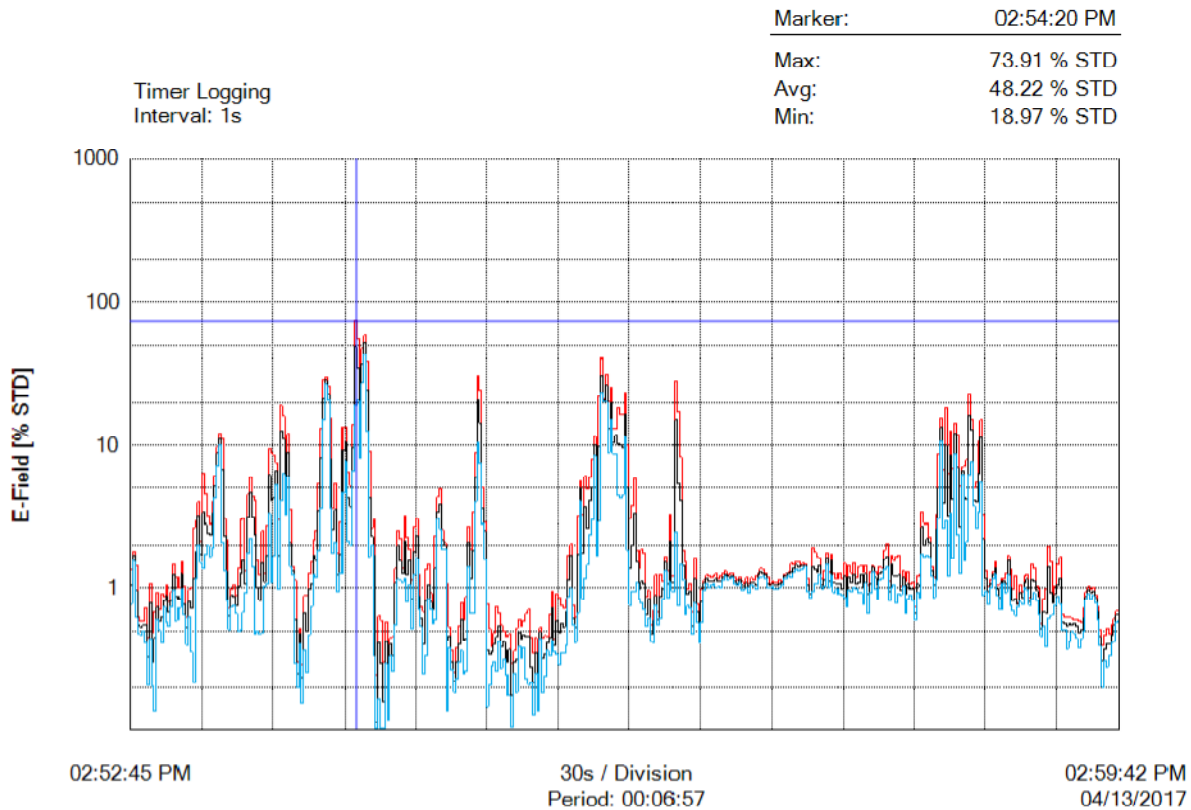


Figure 7 - Charted Measurements - Upper Roof

In probe scans up to ~2 meters above the upper roof level, the maximum power density recorded on the lower roof area was 73.91% of the occupational/controlled limits as shown in Figure 7. For frequencies of interest at this site, the general public limit is 20% of the occupational/controlled limit, therefore the percentage of general public limit is 369.6%. The upper rooftop has controlled access, and further already has signs posted stating:

BEYOND THIS POINT:

Radio frequency fields at this site may exceed FCC rules for human exposure For your safety, obey all posted signs and site guidelines for working in radio frequency environments In accordance with Federal Regulations on frequency emissions.

Note that these signs are intended for the more restrictive case of levels exceeding occupational limits, which are likely to exist at heights above ~2m.

The highest levels were recorded when scanning within about an inch of the guy wires supporting the WFMP-LP antenna tower. Specifically, the guy wires attached near the antenna exhibited the highest levels at heights up to around 7-ft above the roof. Measurements were not made at higher elevations. The guyed WFMP-LP tower is shown in Figure 8, and the means of anchoring the guys to the roof level are shown in Figure 9.



Figure 8 - Guyed WFMP-LP Tower on Upper Roof



Figure 9 - Typical Guy Anchoring at Roof Level for WFMP-LP Tower on Upper Roof

Educational Media Foundation has implemented a plan to clearly mark the area with appropriate visual warning signs which describe the nature of the hazard. These signs in addition to the already restricted access to the rooftop should be sufficient measures to prevent the exposure of humans to the RF fields in excess of the FCC Guidelines (OET Bulletin No. 65, Edition 97-01, August 1997).

Signage currently posted at the ladder to the upper roof are shown in the photos of Figure 10




Figure 10 - Signs Posted Near Ladder Leading to Upper Roof

AFFIDAVIT

I, Eric R. Wandel, employed by Wavepoint Research, Inc. and under the commission of Educational Media Foundation, have performed the preparation of all technical information contained in this document and to my knowledge have made no misrepresentations or false claims.

My qualifications to perform this work are supported as follows:

1. Education includes:
 - a) The degree of Bachelor of Science in Electrical Engineering from Rose-Hulman Institute of Technology, Terre Haute, Indiana
 - b) The degree of Bachelor of Science in Applied Optics from Rose-Hulman Institute of Technology, Terre Haute, Indiana
 - c) The degree of Master of Science in Electrical Engineering from Rensselaer Polytechnic Institute, Troy, New York
2. Experience includes:
 - a) 25 years of experience in systems engineering work related to RF engineering, signal processing, antenna and filter design, including design, installation and field checkout of high power broadcast systems involving combined operation of multiple stations.
3. Licensed Professional Engineer
 - a) State of Indiana, Registration No. 19900140


Eric R. Wandel, P.E.

April 17, 2017
Date

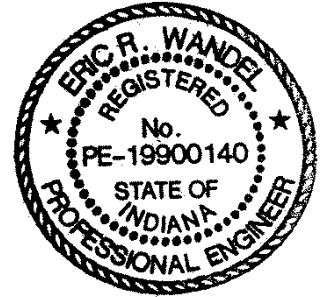


Exhibit A – Field Measurements -- Raw Data Tables / Charts

Test Report

Date 04/13/2017
 Time 01:52:00 PM
 Page 1

Instrument / Site

Meter	Probe	
Model: NBM-550	Model: EA5091	
S/N: B-0054	S/N: 01053	
Calibration Due Date 02/06/2019	Calibration Due Date 02/03/2019	

Site	Coordinates
	Latitude: 38.24578
	Longitude: -85.75811

Comment

Measured Values

Timer: Start Time 01:52:00 PM, Period 0h 17' 57", Interval 1s

Index	Date/Time	Zero	Max (E-Field)	Avg (E-Field)	Min (E-Field)
1	04/13/2017 01:52:01 PM		0.2267 % STD	0.2065 % STD	0.1833 % STD
2	04/13/2017 01:52:02 PM		0.2508 % STD	0.2325 % STD	0.2122 % STD
3	04/13/2017 01:52:03 PM		0.2315 % STD	0.2258 % STD	0.2122 % STD
4	04/13/2017 01:52:04 PM		0.2267 % STD	0.1746 % STD	0.1302 % STD
5	04/13/2017 01:52:05 PM		0.3136 % STD	0.1746 % STD	0.0868 % STD
6	04/13/2017 01:52:06 PM		0.3281 % STD	0.2962 % STD	0.2750 % STD
7	04/13/2017 01:52:07 PM		0.3474 % STD	0.2731 % STD	0.2171 % STD
8	04/13/2017 01:52:08 PM		0.2798 % STD	0.2412 % STD	0.2074 % STD
9	04/13/2017 01:52:09 PM		0.2460 % STD	0.1981 % STD	0.1369 % STD
10	04/13/2017 01:52:10 PM		0.1157 % STD	0.0945 % STD	0.0675 % STD
11	04/13/2017 01:52:11 PM		0.2219 % STD	0.1900 % STD	0.1495 % STD
12	04/13/2017 01:52:12 PM		0.3184 % STD	0.2667 % STD	0.2267 % STD
13	04/13/2017 01:52:13 PM		0.2702 % STD	0.2335 % STD	0.2122 % STD
14	04/13/2017 01:52:14 PM		0.2721 % STD	0.2020 % STD	0.1302 % STD
15	04/13/2017 01:52:15 PM		0.2171 % STD	0.1939 % STD	0.1447 % STD
16	04/13/2017 01:52:16 PM		0.2557 % STD	0.2364 % STD	0.1881 % STD
17	04/13/2017 01:52:17 PM		0.2846 % STD	0.2518 % STD	0.2122 % STD
18	04/13/2017 01:52:18 PM		0.2460 % STD	0.2065 % STD	0.1495 % STD
19	04/13/2017 01:52:19 PM		0.2026 % STD	0.1534 % STD	0.1157 % STD
20	04/13/2017 01:52:20 PM		0.2943 % STD	0.2624 % STD	0.2315 % STD
21	04/13/2017 01:52:21 PM		0.3281 % STD	0.2924 % STD	0.2557 % STD
22	04/13/2017 01:52:22 PM		0.3088 % STD	0.2161 % STD	0.1543 % STD
23	04/13/2017 01:52:23 PM		0.2092 % STD	0.1470 % STD	0.1061 % STD
24	04/13/2017 01:52:24 PM		0.2702 % STD	0.2412 % STD	0.2074 % STD
25	04/13/2017 01:52:25 PM		0.2798 % STD	0.2448 % STD	0.2111 % STD
26	04/13/2017 01:52:26 PM		0.2315 % STD	0.1831 % STD	0.1495 % STD
27	04/13/2017 01:52:27 PM		0.2026 % STD	0.1707 % STD	0.1447 % STD
28	04/13/2017 01:52:28 PM		0.2895 % STD	0.2470 % STD	0.2171 % STD
29	04/13/2017 01:52:29 PM		0.3202 % STD	0.2811 % STD	0.2460 % STD

Index	Date/Time	Zero	Max (E-Field)	Avg (E-Field)	Min (E-Field)
30	04/13/2017 01:52:30 PM		0.2497 % STD	0.2332 % STD	0.2122 % STD
31	04/13/2017 01:52:31 PM		0.2074 % STD	0.1563 % STD	0.1302 % STD
32	04/13/2017 01:52:32 PM		0.2756 % STD	0.2452 % STD	0.2074 % STD
33	04/13/2017 01:52:33 PM		0.2653 % STD	0.2373 % STD	0.1978 % STD
34	04/13/2017 01:52:34 PM		0.2026 % STD	0.1428 % STD	0.0723 % STD
35	04/13/2017 01:52:35 PM		0.2074 % STD	0.1592 % STD	0.1061 % STD
36	04/13/2017 01:52:36 PM		0.2702 % STD	0.2576 % STD	0.2460 % STD
37	04/13/2017 01:52:37 PM		0.3232 % STD	0.2653 % STD	0.2267 % STD
38	04/13/2017 01:52:38 PM		0.2026 % STD	0.1717 % STD	0.1206 % STD
39	04/13/2017 01:52:39 PM		0.2557 % STD	0.2151 % STD	0.1399 % STD
40	04/13/2017 01:52:40 PM		0.3426 % STD	0.3136 % STD	0.2943 % STD
41	04/13/2017 01:52:41 PM		0.2798 % STD	0.2422 % STD	0.1978 % STD
42	04/13/2017 01:52:42 PM		0.2364 % STD	0.1843 % STD	0.1399 % STD
43	04/13/2017 01:52:43 PM		0.3432 % STD	0.2982 % STD	0.2460 % STD
44	04/13/2017 01:52:44 PM		0.2702 % STD	0.2393 % STD	0.1978 % STD
45	04/13/2017 01:52:45 PM		0.2122 % STD	0.1601 % STD	0.0916 % STD
46	04/13/2017 01:52:46 PM		0.2750 % STD	0.1734 % STD	0.0868 % STD
47	04/13/2017 01:52:47 PM		0.3474 % STD	0.3243 % STD	0.3039 % STD
48	04/13/2017 01:52:48 PM		0.2846 % STD	0.2527 % STD	0.2147 % STD
49	04/13/2017 01:52:49 PM		0.2219 % STD	0.1312 % STD	0.0772 % STD
50	04/13/2017 01:52:50 PM		0.2653 % STD	0.2383 % STD	0.2074 % STD
51	04/13/2017 01:52:51 PM		0.2702 % STD	0.2537 % STD	0.2267 % STD
52	04/13/2017 01:52:52 PM		0.2364 % STD	0.1987 % STD	0.1688 % STD
53	04/13/2017 01:52:53 PM		0.1592 % STD	0.1495 % STD	0.1350 % STD
54	04/13/2017 01:52:54 PM		0.2943 % STD	0.2595 % STD	0.1881 % STD
55	04/13/2017 01:52:55 PM		0.2943 % STD	0.2769 % STD	0.2460 % STD
56	04/13/2017 01:52:56 PM		0.2412 % STD	0.2103 % STD	0.1785 % STD
57	04/13/2017 01:52:57 PM		0.1543 % STD	0.1293 % STD	0.1109 % STD
58	04/13/2017 01:52:58 PM		0.3184 % STD	0.2528 % STD	0.1543 % STD
59	04/13/2017 01:52:59 PM		0.2991 % STD	0.2779 % STD	0.2557 % STD
60	04/13/2017 01:53:00 PM		0.2605 % STD	0.2151 % STD	0.1495 % STD
61	04/13/2017 01:53:01 PM		0.1543 % STD	0.1148 % STD	0.0723 % STD
62	04/13/2017 01:53:02 PM		0.2460 % STD	0.2055 % STD	0.1736 % STD
63	04/13/2017 01:53:03 PM		0.2460 % STD	0.1997 % STD	0.1592 % STD
64	04/13/2017 01:53:04 PM		0.2364 % STD	0.2036 % STD	0.1785 % STD
65	04/13/2017 01:53:05 PM		0.1206 % STD	0.0810 % STD	0.0434 % STD
66	04/13/2017 01:53:06 PM		0.1592 % STD	0.0858 % STD	0.0482 % STD
67	04/13/2017 01:53:07 PM		0.2460 % STD	0.1958 % STD	0.1543 % STD
68	04/13/2017 01:53:08 PM		0.2460 % STD	0.1852 % STD	0.0916 % STD
69	04/13/2017 01:53:09 PM		0.0579 % STD	0.0366 % STD	0.0000 % STD
70	04/13/2017 01:53:10 PM		0.0820 % STD	0.0550 % STD	0.0338 % STD
71	04/13/2017 01:53:11 PM		0.1881 % STD	0.0868 % STD	0.0193 % STD
72	04/13/2017 01:53:12 PM		0.0820 % STD	0.0656 % STD	0.0530 % STD
73	04/13/2017 01:53:13 PM		0.2026 % STD	0.1235 % STD	0.0386 % STD
74	04/13/2017 01:53:14 PM		0.3908 % STD	0.3194 % STD	0.2460 % STD
75	04/13/2017 01:53:15 PM		0.3957 % STD	0.2856 % STD	0.1978 % STD
76	04/13/2017 01:53:16 PM		0.1543 % STD	0.1042 % STD	0.0434 % STD
77	04/13/2017 01:53:17 PM		0.2991 % STD	0.2422 % STD	0.1640 % STD
78	04/13/2017 01:53:18 PM		0.3619 % STD	0.2895 % STD	0.2074 % STD
79	04/13/2017 01:53:19 PM		0.2943 % STD	0.2595 % STD	0.2364 % STD
80	04/13/2017 01:53:20 PM		0.2798 % STD	0.2586 % STD	0.2315 % STD
81	04/13/2017 01:53:21 PM		0.1978 % STD	0.1418 % STD	0.1109 % STD
82	04/13/2017 01:53:22 PM		0.2026 % STD	0.1399 % STD	0.0868 % STD
83	04/13/2017 01:53:23 PM		0.3184 % STD	0.2885 % STD	0.2702 % STD

Index	Date/Time	Zero	Max (E-Field)	Avg (E-Field)	Min (E-Field)
84	04/13/2017 01:53:24 PM		0.3667 % STD	0.3184 % STD	0.2508 % STD
85	04/13/2017 01:53:25 PM		0.2798 % STD	0.2499 % STD	0.2074 % STD
86	04/13/2017 01:53:26 PM		0.4198 % STD	0.3522 % STD	0.2991 % STD
87	04/13/2017 01:53:27 PM		0.2895 % STD	0.2619 % STD	0.2286 % STD
88	04/13/2017 01:53:28 PM		0.1882 % STD	0.1470 % STD	0.0916 % STD
89	04/13/2017 01:53:29 PM		0.1851 % STD	0.1203 % STD	0.0675 % STD
90	04/13/2017 01:53:30 PM		0.1352 % STD	0.1105 % STD	0.0772 % STD
91	04/13/2017 01:53:31 PM		0.1688 % STD	0.1352 % STD	0.0778 % STD
92	04/13/2017 01:53:32 PM		0.0965 % STD	0.0405 % STD	0.0048 % STD
93	04/13/2017 01:53:33 PM		0.1665 % STD	0.1085 % STD	0.0723 % STD
94	04/13/2017 01:53:34 PM		0.2238 % STD	0.1766 % STD	0.1447 % STD
95	04/13/2017 01:53:35 PM		0.2991 % STD	0.2467 % STD	0.2014 % STD
96	04/13/2017 01:53:36 PM		0.3939 % STD	0.3445 % STD	0.3184 % STD
97	04/13/2017 01:53:37 PM		0.3619 % STD	0.3120 % STD	0.2527 % STD
98	04/13/2017 01:53:38 PM		0.2606 % STD	0.2241 % STD	0.2026 % STD
99	04/13/2017 01:53:39 PM		0.3299 % STD	0.2910 % STD	0.2460 % STD
100	04/13/2017 01:53:40 PM		0.3232 % STD	0.2895 % STD	0.2605 % STD
101	04/13/2017 01:53:41 PM		0.4246 % STD	0.3464 % STD	0.2798 % STD
102	04/13/2017 01:53:42 PM		0.2895 % STD	0.2709 % STD	0.2605 % STD
103	04/13/2017 01:53:43 PM		0.2557 % STD	0.1312 % STD	0.0193 % STD
104	04/13/2017 01:53:44 PM		0.1628 % STD	0.1261 % STD	0.0868 % STD
105	04/13/2017 01:53:45 PM		0.1833 % STD	0.1601 % STD	0.1447 % STD
106	04/13/2017 01:53:46 PM		0.1833 % STD	0.1186 % STD	0.0675 % STD
107	04/13/2017 01:53:47 PM		0.2177 % STD	0.1530 % STD	0.1013 % STD
108	04/13/2017 01:53:48 PM		0.2473 % STD	0.1838 % STD	0.1350 % STD
109	04/13/2017 01:53:49 PM		0.2315 % STD	0.1920 % STD	0.1206 % STD
110	04/13/2017 01:53:50 PM		0.2508 % STD	0.1669 % STD	0.1013 % STD
111	04/13/2017 01:53:51 PM		0.2267 % STD	0.1920 % STD	0.1640 % STD
112	04/13/2017 01:53:52 PM		0.2225 % STD	0.1689 % STD	0.1254 % STD
113	04/13/2017 01:53:53 PM		0.0820 % STD	0.0492 % STD	0.0000 % STD
114	04/13/2017 01:53:54 PM		0.2340 % STD	0.1403 % STD	0.0289 % STD
115	04/13/2017 01:53:55 PM		0.2846 % STD	0.2470 % STD	0.1929 % STD
116	04/13/2017 01:53:56 PM		0.1254 % STD	0.0926 % STD	0.0723 % STD
117	04/13/2017 01:53:57 PM		0.4563 % STD	0.3180 % STD	0.1736 % STD
118	04/13/2017 01:53:58 PM		0.3293 % STD	0.2810 % STD	0.2219 % STD
119	04/13/2017 01:53:59 PM		0.2026 % STD	0.1659 % STD	0.1302 % STD
120	04/13/2017 01:54:00 PM		0.1736 % STD	0.1514 % STD	0.1350 % STD
121	04/13/2017 01:54:01 PM		0.1495 % STD	0.1370 % STD	0.1206 % STD
122	04/13/2017 01:54:02 PM		0.2702 % STD	0.1978 % STD	0.1254 % STD
123	04/13/2017 01:54:03 PM		0.1881 % STD	0.0849 % STD	0.0289 % STD
124	04/13/2017 01:54:04 PM		0.2460 % STD	0.1901 % STD	0.1157 % STD
125	04/13/2017 01:54:05 PM		0.1495 % STD	0.1100 % STD	0.0868 % STD
126	04/13/2017 01:54:06 PM		0.1688 % STD	0.1514 % STD	0.1206 % STD
127	04/13/2017 01:54:07 PM		0.2074 % STD	0.1312 % STD	0.0579 % STD
128	04/13/2017 01:54:08 PM		0.1640 % STD	0.0887 % STD	0.0434 % STD
129	04/13/2017 01:54:09 PM		0.1495 % STD	0.1244 % STD	0.0965 % STD
130	04/13/2017 01:54:10 PM		0.0965 % STD	0.0743 % STD	0.0289 % STD
131	04/13/2017 01:54:11 PM		0.1592 % STD	0.0868 % STD	0.0048 % STD
132	04/13/2017 01:54:12 PM		0.2074 % STD	0.1235 % STD	0.0530 % STD
133	04/13/2017 01:54:13 PM		0.1109 % STD	0.0714 % STD	0.0386 % STD
134	04/13/2017 01:54:14 PM		0.1350 % STD	0.1061 % STD	0.0772 % STD
135	04/13/2017 01:54:15 PM		0.1302 % STD	0.0588 % STD	0.0000 % STD
136	04/13/2017 01:54:16 PM		0.0675 % STD	0.0318 % STD	0.0000 % STD
137	04/13/2017 01:54:17 PM		0.0820 % STD	0.0511 % STD	0.0289 % STD

Index	Date/Time	Zero	Max (E-Field)	Avg (E-Field)	Min (E-Field)
138	04/13/2017 01:54:18 PM		0.0579 % STD	0.0328 % STD	0.0000 % STD
139	04/13/2017 01:54:19 PM		0.0965 % STD	0.0424 % STD	0.0000 % STD
140	04/13/2017 01:54:20 PM		0.0965 % STD	0.0781 % STD	0.0579 % STD
141	04/13/2017 01:54:21 PM		0.0820 % STD	0.0405 % STD	0.0048 % STD
142	04/13/2017 01:54:22 PM		0.1254 % STD	0.0743 % STD	0.0386 % STD
143	04/13/2017 01:54:23 PM		0.1543 % STD	0.0540 % STD	0.0000 % STD
144	04/13/2017 01:54:24 PM		0.0338 % STD	0.0164 % STD	0.0000 % STD
145	04/13/2017 01:54:25 PM		0.1013 % STD	0.0550 % STD	0.0000 % STD
146	04/13/2017 01:54:26 PM		0.0386 % STD	0.0106 % STD	0.0000 % STD
147	04/13/2017 01:54:27 PM		0.1302 % STD	0.0386 % STD	0.0000 % STD
148	04/13/2017 01:54:28 PM		0.1061 % STD	0.0878 % STD	0.0772 % STD
149	04/13/2017 01:54:29 PM		0.0723 % STD	0.0473 % STD	0.0000 % STD
150	04/13/2017 01:54:30 PM		0.1592 % STD	0.1437 % STD	0.1157 % STD
151	04/13/2017 01:54:31 PM		0.1688 % STD	0.1553 % STD	0.1399 % STD
152	04/13/2017 01:54:32 PM		0.1543 % STD	0.1428 % STD	0.1302 % STD
153	04/13/2017 01:54:33 PM		0.2219 % STD	0.1765 % STD	0.1495 % STD
154	04/13/2017 01:54:34 PM		0.2074 % STD	0.1833 % STD	0.1640 % STD
155	04/13/2017 01:54:35 PM		0.3812 % STD	0.2383 % STD	0.1206 % STD
156	04/13/2017 01:54:36 PM		0.4922 % STD	0.4401 % STD	0.4053 % STD
157	04/13/2017 01:54:37 PM		0.4005 % STD	0.3850 % STD	0.3667 % STD
158	04/13/2017 01:54:38 PM		0.5212 % STD	0.4440 % STD	0.3184 % STD
159	04/13/2017 01:54:39 PM		0.3957 % STD	0.3319 % STD	0.2605 % STD
160	04/13/2017 01:54:40 PM		0.2798 % STD	0.2344 % STD	0.1785 % STD
161	04/13/2017 01:54:41 PM		0.2026 % STD	0.1707 % STD	0.1447 % STD
162	04/13/2017 01:54:42 PM		0.1640 % STD	0.1080 % STD	0.0627 % STD
163	04/13/2017 01:54:43 PM		0.1399 % STD	0.0637 % STD	0.0145 % STD
164	04/13/2017 01:54:44 PM		0.1688 % STD	0.1418 % STD	0.1157 % STD
165	04/13/2017 01:54:45 PM		0.1495 % STD	0.1312 % STD	0.1061 % STD
166	04/13/2017 01:54:46 PM		0.1929 % STD	0.1804 % STD	0.1592 % STD
167	04/13/2017 01:54:47 PM		0.1929 % STD	0.1698 % STD	0.1399 % STD
168	04/13/2017 01:54:48 PM		0.2267 % STD	0.1370 % STD	0.0723 % STD
169	04/13/2017 01:54:49 PM		0.1350 % STD	0.1032 % STD	0.0772 % STD
170	04/13/2017 01:54:50 PM		0.1206 % STD	0.0791 % STD	0.0530 % STD
171	04/13/2017 01:54:51 PM		0.1929 % STD	0.1350 % STD	0.0820 % STD
172	04/13/2017 01:54:52 PM		0.1785 % STD	0.1476 % STD	0.1061 % STD
173	04/13/2017 01:54:53 PM		0.1881 % STD	0.1505 % STD	0.1302 % STD
174	04/13/2017 01:54:54 PM		0.2122 % STD	0.1707 % STD	0.1109 % STD
175	04/13/2017 01:54:55 PM		0.2364 % STD	0.1997 % STD	0.1640 % STD
176	04/13/2017 01:54:56 PM		0.2653 % STD	0.2200 % STD	0.1495 % STD
177	04/13/2017 01:54:57 PM		0.2364 % STD	0.1900 % STD	0.1592 % STD
178	04/13/2017 01:54:58 PM		0.2315 % STD	0.1872 % STD	0.1543 % STD
179	04/13/2017 01:54:59 PM		0.2412 % STD	0.2026 % STD	0.1688 % STD
180	04/13/2017 01:55:00 PM		0.3232 % STD	0.2094 % STD	0.1495 % STD
181	04/13/2017 01:55:01 PM		0.4488 % STD	0.3648 % STD	0.2991 % STD
182	04/13/2017 01:55:02 PM		0.7049 % STD	0.6266 % STD	0.4922 % STD
183	04/13/2017 01:55:03 PM		0.7194 % STD	0.6826 % STD	0.6372 % STD
184	04/13/2017 01:55:04 PM		0.5647 % STD	0.4285 % STD	0.3281 % STD
185	04/13/2017 01:55:05 PM		0.3426 % STD	0.2480 % STD	0.1640 % STD
186	04/13/2017 01:55:06 PM		0.4343 % STD	0.2953 % STD	0.1543 % STD
187	04/13/2017 01:55:07 PM		0.4729 % STD	0.3937 % STD	0.3570 % STD
188	04/13/2017 01:55:08 PM		0.4295 % STD	0.4005 % STD	0.3377 % STD
189	04/13/2017 01:55:09 PM		0.3860 % STD	0.3348 % STD	0.3088 % STD
190	04/13/2017 01:55:10 PM		0.5889 % STD	0.5492 % STD	0.5116 % STD
191	04/13/2017 01:55:11 PM		0.8015 % STD	0.6633 % STD	0.5357 % STD

Index	Date/Time	Zero	Max (E-Field)	Avg (E-Field)	Min (E-Field)
192	04/13/2017 01:55:12 PM		0.8402 % STD	0.7841 % STD	0.7097 % STD
193	04/13/2017 01:55:13 PM		0.7725 % STD	0.7136 % STD	0.6468 % STD
194	04/13/2017 01:55:14 PM		0.5647 % STD	0.5338 % STD	0.5067 % STD
195	04/13/2017 01:55:15 PM		0.7339 % STD	0.6613 % STD	0.5937 % STD
196	04/13/2017 01:55:16 PM		0.7290 % STD	0.5802 % STD	0.4729 % STD
197	04/13/2017 01:55:17 PM		0.6710 % STD	0.5802 % STD	0.4536 % STD
198	04/13/2017 01:55:18 PM		0.5985 % STD	0.5261 % STD	0.4246 % STD
199	04/13/2017 01:55:19 PM		0.5309 % STD	0.4604 % STD	0.3570 % STD
200	04/13/2017 01:55:20 PM		0.4198 % STD	0.3976 % STD	0.3474 % STD
201	04/13/2017 01:55:21 PM		0.3474 % STD	0.3242 % STD	0.3039 % STD
202	04/13/2017 01:55:22 PM		0.4150 % STD	0.3628 % STD	0.2943 % STD
203	04/13/2017 01:55:23 PM		0.4246 % STD	0.4015 % STD	0.3860 % STD
204	04/13/2017 01:55:24 PM		0.4729 % STD	0.3638 % STD	0.2171 % STD
205	04/13/2017 01:55:25 PM		0.2219 % STD	0.1891 % STD	0.1302 % STD
206	04/13/2017 01:55:26 PM		0.2750 % STD	0.2296 % STD	0.1640 % STD
207	04/13/2017 01:55:27 PM		0.3136 % STD	0.2624 % STD	0.2122 % STD
208	04/13/2017 01:55:28 PM		0.1929 % STD	0.1225 % STD	0.0434 % STD
209	04/13/2017 01:55:29 PM		0.3232 % STD	0.2142 % STD	0.1061 % STD
210	04/13/2017 01:55:30 PM		0.3232 % STD	0.2123 % STD	0.1013 % STD
211	04/13/2017 01:55:31 PM		0.0530 % STD	0.0212 % STD	0.0000 % STD
212	04/13/2017 01:55:32 PM		0.3136 % STD	0.2634 % STD	0.1736 % STD
213	04/13/2017 01:55:33 PM		0.2219 % STD	0.1775 % STD	0.1592 % STD
214	04/13/2017 01:55:34 PM		0.0965 % STD	0.0588 % STD	0.0241 % STD
215	04/13/2017 01:55:35 PM		0.2026 % STD	0.1794 % STD	0.1206 % STD
216	04/13/2017 01:55:36 PM		0.2460 % STD	0.2036 % STD	0.1495 % STD
217	04/13/2017 01:55:37 PM		0.0965 % STD	0.0627 % STD	0.0048 % STD
218	04/13/2017 01:55:38 PM		0.2460 % STD	0.2036 % STD	0.1543 % STD
219	04/13/2017 01:55:39 PM		0.1833 % STD	0.1457 % STD	0.1061 % STD
220	04/13/2017 01:55:40 PM		0.5019 % STD	0.3030 % STD	0.0772 % STD
221	04/13/2017 01:55:41 PM		0.4391 % STD	0.3812 % STD	0.3184 % STD
222	04/13/2017 01:55:42 PM		0.7097 % STD	0.4759 % STD	0.2895 % STD
223	04/13/2017 01:55:43 PM		0.6903 % STD	0.5782 % STD	0.4826 % STD
224	04/13/2017 01:55:44 PM		0.7049 % STD	0.6285 % STD	0.5647 % STD
225	04/13/2017 01:55:45 PM		0.5550 % STD	0.4980 % STD	0.4101 % STD
226	04/13/2017 01:55:46 PM		0.3812 % STD	0.2026 % STD	0.0772 % STD
227	04/13/2017 01:55:47 PM		0.1929 % STD	0.1650 % STD	0.1399 % STD
228	04/13/2017 01:55:48 PM		0.3377 % STD	0.2229 % STD	0.1640 % STD
229	04/13/2017 01:55:49 PM		0.3957 % STD	0.2953 % STD	0.1350 % STD
230	04/13/2017 01:55:50 PM		0.2315 % STD	0.1486 % STD	0.0965 % STD
231	04/13/2017 01:55:51 PM		0.3232 % STD	0.2817 % STD	0.2460 % STD
232	04/13/2017 01:55:52 PM		0.3426 % STD	0.2566 % STD	0.1399 % STD
233	04/13/2017 01:55:53 PM		0.2460 % STD	0.1572 % STD	0.1013 % STD
234	04/13/2017 01:55:54 PM		0.3184 % STD	0.2537 % STD	0.1929 % STD
235	04/13/2017 01:55:55 PM		0.2750 % STD	0.2219 % STD	0.1350 % STD
236	04/13/2017 01:55:56 PM		0.1543 % STD	0.1177 % STD	0.0868 % STD
237	04/13/2017 01:55:57 PM		0.2412 % STD	0.1659 % STD	0.1206 % STD
238	04/13/2017 01:55:58 PM		0.3039 % STD	0.2306 % STD	0.1881 % STD
239	04/13/2017 01:55:59 PM		0.3184 % STD	0.2615 % STD	0.2074 % STD
240	04/13/2017 01:56:00 PM		0.1350 % STD	0.0820 % STD	0.0627 % STD
241	04/13/2017 01:56:01 PM		0.2798 % STD	0.2383 % STD	0.1495 % STD
242	04/13/2017 01:56:02 PM		0.2074 % STD	0.1698 % STD	0.1495 % STD
243	04/13/2017 01:56:03 PM		0.3860 % STD	0.2412 % STD	0.0627 % STD
244	04/13/2017 01:56:04 PM		0.3860 % STD	0.1737 % STD	0.0145 % STD
245	04/13/2017 01:56:05 PM		0.5116 % STD	0.4536 % STD	0.3715 % STD

Index	Date/Time	Zero	Max (E-Field)	Avg (E-Field)	Min (E-Field)
246	04/13/2017 01:56:06 PM		0.5261 % STD	0.4768 % STD	0.4053 % STD
247	04/13/2017 01:56:07 PM		0.3570 % STD	0.2412 % STD	0.1785 % STD
248	04/13/2017 01:56:08 PM		0.4150 % STD	0.3648 % STD	0.3232 % STD
249	04/13/2017 01:56:09 PM		0.4439 % STD	0.2924 % STD	0.2074 % STD
250	04/13/2017 01:56:10 PM		0.5599 % STD	0.4276 % STD	0.2412 % STD
251	04/13/2017 01:56:11 PM		0.3039 % STD	0.2895 % STD	0.2605 % STD
252	04/13/2017 01:56:12 PM		0.2895 % STD	0.2634 % STD	0.2412 % STD
253	04/13/2017 01:56:13 PM		0.3136 % STD	0.2827 % STD	0.2605 % STD
254	04/13/2017 01:56:14 PM		0.3860 % STD	0.2924 % STD	0.1978 % STD
255	04/13/2017 01:56:15 PM		0.3522 % STD	0.2924 % STD	0.2074 % STD
256	04/13/2017 01:56:16 PM		0.4198 % STD	0.3262 % STD	0.2267 % STD
257	04/13/2017 01:56:17 PM		0.4053 % STD	0.3706 % STD	0.3088 % STD
258	04/13/2017 01:56:18 PM		0.2798 % STD	0.2595 % STD	0.2364 % STD
259	04/13/2017 01:56:19 PM		0.2122 % STD	0.0974 % STD	0.0241 % STD
260	04/13/2017 01:56:20 PM		0.2895 % STD	0.2132 % STD	0.1688 % STD
261	04/13/2017 01:56:21 PM		0.3474 % STD	0.2566 % STD	0.1833 % STD
262	04/13/2017 01:56:22 PM		0.1688 % STD	0.1341 % STD	0.1109 % STD
263	04/13/2017 01:56:23 PM		0.3329 % STD	0.2412 % STD	0.1254 % STD
264	04/13/2017 01:56:24 PM		0.1543 % STD	0.0936 % STD	0.0145 % STD
265	04/13/2017 01:56:25 PM		0.2171 % STD	0.1476 % STD	0.0723 % STD
266	04/13/2017 01:56:26 PM		0.1736 % STD	0.1167 % STD	0.0579 % STD
267	04/13/2017 01:56:27 PM		0.1833 % STD	0.1370 % STD	0.0868 % STD
268	04/13/2017 01:56:28 PM		0.1881 % STD	0.1042 % STD	0.0048 % STD
269	04/13/2017 01:56:29 PM		0.2122 % STD	0.1360 % STD	0.0675 % STD
270	04/13/2017 01:56:30 PM		0.2653 % STD	0.2161 % STD	0.1736 % STD
271	04/13/2017 01:56:31 PM		0.1688 % STD	0.1360 % STD	0.0916 % STD
272	04/13/2017 01:56:32 PM		0.2315 % STD	0.1244 % STD	0.0338 % STD
273	04/13/2017 01:56:33 PM		0.3860 % STD	0.3117 % STD	0.2122 % STD
274	04/13/2017 01:56:34 PM		0.3764 % STD	0.2557 % STD	0.1350 % STD
275	04/13/2017 01:56:35 PM		0.3329 % STD	0.2480 % STD	0.1785 % STD
276	04/13/2017 01:56:36 PM		0.3957 % STD	0.3281 % STD	0.2267 % STD
277	04/13/2017 01:56:37 PM		0.4150 % STD	0.3493 % STD	0.2460 % STD
278	04/13/2017 01:56:38 PM		0.4053 % STD	0.3474 % STD	0.3088 % STD
279	04/13/2017 01:56:39 PM		0.3377 % STD	0.2866 % STD	0.2267 % STD
280	04/13/2017 01:56:40 PM		0.4295 % STD	0.2711 % STD	0.1447 % STD
281	04/13/2017 01:56:41 PM		0.3088 % STD	0.1109 % STD	0.0193 % STD
282	04/13/2017 01:56:42 PM		0.5261 % STD	0.2934 % STD	0.0530 % STD
283	04/13/2017 01:56:43 PM		0.4584 % STD	0.3850 % STD	0.2991 % STD
284	04/13/2017 01:56:44 PM		0.4874 % STD	0.2856 % STD	0.1399 % STD
285	04/13/2017 01:56:45 PM		0.3860 % STD	0.3030 % STD	0.2074 % STD
286	04/13/2017 01:56:46 PM		0.4198 % STD	0.3175 % STD	0.1688 % STD
287	04/13/2017 01:56:47 PM		0.3908 % STD	0.3165 % STD	0.1978 % STD
288	04/13/2017 01:56:48 PM		0.4826 % STD	0.4015 % STD	0.2460 % STD
289	04/13/2017 01:56:49 PM		0.4150 % STD	0.3590 % STD	0.2991 % STD
290	04/13/2017 01:56:50 PM		0.4488 % STD	0.4034 % STD	0.3715 % STD
291	04/13/2017 01:56:51 PM		0.4729 % STD	0.3686 % STD	0.2605 % STD
292	04/13/2017 01:56:52 PM		0.4584 % STD	0.4053 % STD	0.3184 % STD
293	04/13/2017 01:56:53 PM		0.6033 % STD	0.4391 % STD	0.3039 % STD
294	04/13/2017 01:56:54 PM		0.7145 % STD	0.6971 % STD	0.6807 % STD
295	04/13/2017 01:56:55 PM		0.5502 % STD	0.3976 % STD	0.2991 % STD
296	04/13/2017 01:56:56 PM		0.5454 % STD	0.4459 % STD	0.3329 % STD
297	04/13/2017 01:56:57 PM		0.6855 % STD	0.5435 % STD	0.4005 % STD
298	04/13/2017 01:56:58 PM		0.7967 % STD	0.6082 % STD	0.4343 % STD
299	04/13/2017 01:56:59 PM		0.5357 % STD	0.4816 % STD	0.3812 % STD

Index	Date/Time	Zero	Max (E-Field)	Avg (E-Field)	Min (E-Field)
300	04/13/2017 01:57:00 PM		0.8015 % STD	0.6662 % STD	0.4198 % STD
301	04/13/2017 01:57:01 PM		0.3619 % STD	0.2296 % STD	0.1495 % STD
302	04/13/2017 01:57:02 PM		0.6275 % STD	0.4691 % STD	0.2074 % STD
303	04/13/2017 01:57:03 PM		0.6903 % STD	0.4962 % STD	0.2026 % STD
304	04/13/2017 01:57:04 PM		0.6130 % STD	0.5724 % STD	0.5599 % STD
305	04/13/2017 01:57:05 PM		0.5937 % STD	0.5628 % STD	0.5019 % STD
306	04/13/2017 01:57:06 PM		0.4536 % STD	0.3860 % STD	0.3329 % STD
307	04/13/2017 01:57:07 PM		0.2605 % STD	0.2045 % STD	0.1640 % STD
308	04/13/2017 01:57:08 PM		0.7242 % STD	0.5802 % STD	0.3377 % STD
309	04/13/2017 01:57:09 PM		0.7194 % STD	0.4527 % STD	0.1929 % STD
310	04/13/2017 01:57:10 PM		0.6468 % STD	0.5106 % STD	0.4584 % STD
311	04/13/2017 01:57:11 PM		0.8354 % STD	0.6025 % STD	0.3329 % STD
312	04/13/2017 01:57:12 PM		0.9272 % STD	0.7184 % STD	0.3764 % STD
313	04/13/2017 01:57:13 PM		0.5985 % STD	0.4478 % STD	0.3426 % STD
314	04/13/2017 01:57:14 PM		0.8402 % STD	0.6943 % STD	0.3764 % STD
315	04/13/2017 01:57:15 PM		0.5019 % STD	0.3947 % STD	0.2605 % STD
316	04/13/2017 01:57:16 PM		0.5647 % STD	0.5405 % STD	0.5212 % STD
317	04/13/2017 01:57:17 PM		0.6130 % STD	0.5193 % STD	0.4391 % STD
318	04/13/2017 01:57:18 PM		0.6468 % STD	0.5792 % STD	0.5212 % STD
319	04/13/2017 01:57:19 PM		0.7870 % STD	0.5754 % STD	0.3329 % STD
320	04/13/2017 01:57:20 PM		0.7049 % STD	0.4488 % STD	0.2557 % STD
321	04/13/2017 01:57:21 PM		0.9466 % STD	0.7078 % STD	0.3860 % STD
322	04/13/2017 01:57:22 PM		0.7194 % STD	0.5077 % STD	0.3426 % STD
323	04/13/2017 01:57:23 PM		0.5309 % STD	0.4758 % STD	0.3426 % STD
324	04/13/2017 01:57:24 PM		0.3522 % STD	0.2634 % STD	0.2171 % STD
325	04/13/2017 01:57:25 PM		0.3619 % STD	0.2393 % STD	0.1399 % STD
326	04/13/2017 01:57:26 PM		0.3908 % STD	0.2982 % STD	0.2315 % STD
327	04/13/2017 01:57:27 PM		0.6033 % STD	0.3272 % STD	0.1254 % STD
328	04/13/2017 01:57:28 PM		0.5261 % STD	0.4179 % STD	0.3088 % STD
329	04/13/2017 01:57:29 PM		0.2412 % STD	0.1640 % STD	0.0000 % STD
330	04/13/2017 01:57:30 PM		0.2412 % STD	0.1235 % STD	0.0000 % STD
331	04/13/2017 01:57:31 PM		0.3377 % STD	0.2152 % STD	0.0193 % STD
332	04/13/2017 01:57:32 PM		0.0338 % STD	0.0145 % STD	0.0000 % STD
333	04/13/2017 01:57:33 PM		0.1350 % STD	0.1003 % STD	0.0579 % STD
334	04/13/2017 01:57:34 PM		0.1736 % STD	0.0791 % STD	0.0096 % STD
335	04/13/2017 01:57:35 PM		0.1350 % STD	0.1051 % STD	0.0579 % STD
336	04/13/2017 01:57:36 PM		0.4005 % STD	0.2856 % STD	0.1543 % STD
337	04/13/2017 01:57:37 PM		0.3522 % STD	0.1959 % STD	0.0723 % STD
338	04/13/2017 01:57:38 PM		0.2122 % STD	0.1756 % STD	0.1206 % STD
339	04/13/2017 01:57:39 PM		0.1399 % STD	0.0984 % STD	0.0579 % STD
340	04/13/2017 01:57:40 PM		0.3184 % STD	0.1833 % STD	0.0675 % STD
341	04/13/2017 01:57:41 PM		0.2991 % STD	0.1630 % STD	0.0868 % STD
342	04/13/2017 01:57:42 PM		0.3764 % STD	0.2875 % STD	0.1543 % STD
343	04/13/2017 01:57:43 PM		0.4633 % STD	0.3001 % STD	0.1399 % STD
344	04/13/2017 01:57:44 PM		0.1447 % STD	0.1215 % STD	0.0965 % STD
345	04/13/2017 01:57:45 PM		0.1302 % STD	0.0887 % STD	0.0530 % STD
346	04/13/2017 01:57:46 PM		0.2895 % STD	0.2026 % STD	0.0916 % STD
347	04/13/2017 01:57:47 PM		0.0820 % STD	0.0318 % STD	0.0000 % STD
348	04/13/2017 01:57:48 PM		0.1881 % STD	0.1206 % STD	0.0193 % STD
349	04/13/2017 01:57:49 PM		0.3619 % STD	0.2615 % STD	0.1447 % STD
350	04/13/2017 01:57:50 PM		0.2991 % STD	0.2142 % STD	0.1495 % STD
351	04/13/2017 01:57:51 PM		0.2750 % STD	0.1698 % STD	0.0868 % STD
352	04/13/2017 01:57:52 PM		0.5840 % STD	0.3551 % STD	0.1833 % STD
353	04/13/2017 01:57:53 PM		0.6178 % STD	0.4942 % STD	0.3426 % STD

Index	Date/Time	Zero	Max (E-Field)	Avg (E-Field)	Min (E-Field)
354	04/13/2017 01:57:54 PM		0.7000 % STD	0.5570 % STD	0.4198 % STD
355	04/13/2017 01:57:55 PM		0.9031 % STD	0.7223 % STD	0.4101 % STD
356	04/13/2017 01:57:56 PM		0.4681 % STD	0.4121 % STD	0.3232 % STD
357	04/13/2017 01:57:57 PM		0.5309 % STD	0.4478 % STD	0.3957 % STD
358	04/13/2017 01:57:58 PM		0.5309 % STD	0.5029 % STD	0.4826 % STD
359	04/13/2017 01:57:59 PM		0.4439 % STD	0.4082 % STD	0.3715 % STD
360	04/13/2017 01:58:00 PM		0.4150 % STD	0.3928 % STD	0.3764 % STD
361	04/13/2017 01:58:01 PM		0.3908 % STD	0.3735 % STD	0.3570 % STD
362	04/13/2017 01:58:02 PM		0.3232 % STD	0.3039 % STD	0.2702 % STD
363	04/13/2017 01:58:03 PM		0.3715 % STD	0.3416 % STD	0.3088 % STD
364	04/13/2017 01:58:04 PM		0.3570 % STD	0.3319 % STD	0.3088 % STD
365	04/13/2017 01:58:05 PM		0.3860 % STD	0.3377 % STD	0.2750 % STD
366	04/13/2017 01:58:06 PM		0.3232 % STD	0.3059 % STD	0.2702 % STD
367	04/13/2017 01:58:07 PM		0.4053 % STD	0.3580 % STD	0.3184 % STD
368	04/13/2017 01:58:08 PM		0.8257 % STD	0.7358 % STD	0.5695 % STD
369	04/13/2017 01:58:09 PM		0.8547 % STD	0.7261 % STD	0.5744 % STD
370	04/13/2017 01:58:10 PM		1.019 % STD	0.9302 % STD	0.7725 % STD
371	04/13/2017 01:58:11 PM		1.077 % STD	0.9747 % STD	0.8885 % STD
372	04/13/2017 01:58:12 PM		0.9901 % STD	0.7049 % STD	0.4295 % STD
373	04/13/2017 01:58:13 PM		0.9901 % STD	0.7880 % STD	0.4922 % STD
374	04/13/2017 01:58:14 PM		1.039 % STD	0.8634 % STD	0.6710 % STD
375	04/13/2017 01:58:15 PM		0.9853 % STD	0.9069 % STD	0.7580 % STD
376	04/13/2017 01:58:16 PM		0.8644 % STD	0.6421 % STD	0.3619 % STD
377	04/13/2017 01:58:17 PM		0.9611 % STD	0.7813 % STD	0.4681 % STD
378	04/13/2017 01:58:18 PM		1.019 % STD	0.8712 % STD	0.7435 % STD
379	04/13/2017 01:58:19 PM		0.6130 % STD	0.4971 % STD	0.3232 % STD
380	04/13/2017 01:58:20 PM		0.3764 % STD	0.3300 % STD	0.2653 % STD
381	04/13/2017 01:58:21 PM		0.9224 % STD	0.8218 % STD	0.5647 % STD
382	04/13/2017 01:58:22 PM		0.8450 % STD	0.5087 % STD	0.2702 % STD
383	04/13/2017 01:58:23 PM		0.4005 % STD	0.2982 % STD	0.2315 % STD
384	04/13/2017 01:58:24 PM		0.7532 % STD	0.4720 % STD	0.3184 % STD
385	04/13/2017 01:58:25 PM		0.8982 % STD	0.8112 % STD	0.5550 % STD
386	04/13/2017 01:58:26 PM		0.3667 % STD	0.3435 % STD	0.2798 % STD
387	04/13/2017 01:58:27 PM		0.4005 % STD	0.3233 % STD	0.2171 % STD
388	04/13/2017 01:58:28 PM		0.9176 % STD	0.8054 % STD	0.6033 % STD
389	04/13/2017 01:58:29 PM		0.7870 % STD	0.5048 % STD	0.3908 % STD
390	04/13/2017 01:58:30 PM		0.3377 % STD	0.2711 % STD	0.1978 % STD
391	04/13/2017 01:58:31 PM		0.8305 % STD	0.6305 % STD	0.3039 % STD
392	04/13/2017 01:58:32 PM		0.6420 % STD	0.3532 % STD	0.1929 % STD
393	04/13/2017 01:58:33 PM		0.3184 % STD	0.2634 % STD	0.1978 % STD
394	04/13/2017 01:58:34 PM		0.8015 % STD	0.4691 % STD	0.2605 % STD
395	04/13/2017 01:58:35 PM		0.9127 % STD	0.5880 % STD	0.3136 % STD
396	04/13/2017 01:58:36 PM		0.3522 % STD	0.3146 % STD	0.2750 % STD
397	04/13/2017 01:58:37 PM		0.4729 % STD	0.3426 % STD	0.2412 % STD
398	04/13/2017 01:58:38 PM		0.8257 % STD	0.6807 % STD	0.4633 % STD
399	04/13/2017 01:58:39 PM		0.3715 % STD	0.3474 % STD	0.3281 % STD
400	04/13/2017 01:58:40 PM		0.4053 % STD	0.3010 % STD	0.2315 % STD
401	04/13/2017 01:58:41 PM		0.8257 % STD	0.5967 % STD	0.3619 % STD
402	04/13/2017 01:58:42 PM		0.5792 % STD	0.3696 % STD	0.2219 % STD
403	04/13/2017 01:58:43 PM		0.5647 % STD	0.3156 % STD	0.1447 % STD
404	04/13/2017 01:58:44 PM		0.8547 % STD	0.7870 % STD	0.6227 % STD
405	04/13/2017 01:58:45 PM		0.4246 % STD	0.3841 % STD	0.3136 % STD
406	04/13/2017 01:58:46 PM		0.5647 % STD	0.4227 % STD	0.3474 % STD
407	04/13/2017 01:58:47 PM		0.8209 % STD	0.7503 % STD	0.5405 % STD

Index	Date/Time	Zero	Max (E-Field)	Avg (E-Field)	Min (E-Field)
408	04/13/2017 01:58:48 PM		0.4198 % STD	0.3638 % STD	0.3088 % STD
409	04/13/2017 01:58:49 PM		0.7774 % STD	0.5077 % STD	0.3570 % STD
410	04/13/2017 01:58:50 PM		0.9176 % STD	0.8624 % STD	0.7435 % STD
411	04/13/2017 01:58:51 PM		0.4391 % STD	0.3696 % STD	0.2750 % STD
412	04/13/2017 01:58:52 PM		0.7822 % STD	0.5290 % STD	0.3908 % STD
413	04/13/2017 01:58:53 PM		0.8305 % STD	0.7261 % STD	0.6420 % STD
414	04/13/2017 01:58:54 PM		0.7677 % STD	0.6450 % STD	0.3860 % STD
415	04/13/2017 01:58:55 PM		0.7725 % STD	0.6421 % STD	0.3764 % STD
416	04/13/2017 01:58:56 PM		0.8885 % STD	0.8470 % STD	0.7870 % STD
417	04/13/2017 01:58:57 PM		1.039 % STD	0.9398 % STD	0.8547 % STD
418	04/13/2017 01:58:58 PM		0.8740 % STD	0.7919 % STD	0.6903 % STD
419	04/13/2017 01:58:59 PM		0.7484 % STD	0.6063 % STD	0.5019 % STD
420	04/13/2017 01:59:00 PM		0.9224 % STD	0.8557 % STD	0.8015 % STD
421	04/13/2017 01:59:01 PM		0.9998 % STD	0.9717 % STD	0.9466 % STD
422	04/13/2017 01:59:02 PM		0.9708 % STD	0.9456 % STD	0.9127 % STD
423	04/13/2017 01:59:03 PM		0.9901 % STD	0.9708 % STD	0.9563 % STD
424	04/13/2017 01:59:04 PM		0.9079 % STD	0.8189 % STD	0.5937 % STD
425	04/13/2017 01:59:05 PM		0.4246 % STD	0.3706 % STD	0.3377 % STD
426	04/13/2017 01:59:06 PM		0.2943 % STD	0.2537 % STD	0.2219 % STD
427	04/13/2017 01:59:07 PM		0.2702 % STD	0.1872 % STD	0.0434 % STD
428	04/13/2017 01:59:08 PM		0.5599 % STD	0.2702 % STD	0.1013 % STD
429	04/13/2017 01:59:09 PM		0.8160 % STD	0.7387 % STD	0.6178 % STD
430	04/13/2017 01:59:10 PM		0.4874 % STD	0.4024 % STD	0.2653 % STD
431	04/13/2017 01:59:11 PM		0.6275 % STD	0.4836 % STD	0.2508 % STD
432	04/13/2017 01:59:12 PM		0.5889 % STD	0.5241 % STD	0.4826 % STD
433	04/13/2017 01:59:13 PM		0.6468 % STD	0.6198 % STD	0.5599 % STD
434	04/13/2017 01:59:14 PM		0.5357 % STD	0.5164 % STD	0.4729 % STD
435	04/13/2017 01:59:15 PM		0.6082 % STD	0.5599 % STD	0.4729 % STD
436	04/13/2017 01:59:16 PM		0.5502 % STD	0.4778 % STD	0.4005 % STD
437	04/13/2017 01:59:17 PM		0.5502 % STD	0.5029 % STD	0.4391 % STD
438	04/13/2017 01:59:18 PM		0.6372 % STD	0.5560 % STD	0.5019 % STD
439	04/13/2017 01:59:19 PM		0.6275 % STD	0.5348 % STD	0.4874 % STD
440	04/13/2017 01:59:20 PM		0.5357 % STD	0.5212 % STD	0.5067 % STD
441	04/13/2017 01:59:21 PM		0.4536 % STD	0.3455 % STD	0.2702 % STD
442	04/13/2017 01:59:22 PM		0.5840 % STD	0.4990 % STD	0.4295 % STD
443	04/13/2017 01:59:23 PM		0.6227 % STD	0.5715 % STD	0.5405 % STD
444	04/13/2017 01:59:24 PM		0.6161 % STD	0.4764 % STD	0.3764 % STD
445	04/13/2017 01:59:25 PM		0.4584 % STD	0.3841 % STD	0.3232 % STD
446	04/13/2017 01:59:26 PM		0.7484 % STD	0.5483 % STD	0.3764 % STD
447	04/13/2017 01:59:27 PM		0.7532 % STD	0.6894 % STD	0.6130 % STD
448	04/13/2017 01:59:28 PM		0.5261 % STD	0.4575 % STD	0.4053 % STD
449	04/13/2017 01:59:29 PM		0.5019 % STD	0.4833 % STD	0.4524 % STD
450	04/13/2017 01:59:30 PM		0.6227 % STD	0.5831 % STD	0.5116 % STD
451	04/13/2017 01:59:31 PM		0.6710 % STD	0.5831 % STD	0.4826 % STD
452	04/13/2017 01:59:32 PM		0.6758 % STD	0.6256 % STD	0.5212 % STD
453	04/13/2017 01:59:33 PM		0.6758 % STD	0.5676 % STD	0.4488 % STD
454	04/13/2017 01:59:34 PM		0.6807 % STD	0.6275 % STD	0.5889 % STD
455	04/13/2017 01:59:35 PM		0.5937 % STD	0.4807 % STD	0.3667 % STD
456	04/13/2017 01:59:36 PM		0.7145 % STD	0.6517 % STD	0.5599 % STD
457	04/13/2017 01:59:37 PM		0.6613 % STD	0.5657 % STD	0.4391 % STD
458	04/13/2017 01:59:38 PM		0.6668 % STD	0.6096 % STD	0.4874 % STD
459	04/13/2017 01:59:39 PM		0.6082 % STD	0.5241 % STD	0.4053 % STD
460	04/13/2017 01:59:40 PM		0.6420 % STD	0.5512 % STD	0.4439 % STD
461	04/13/2017 01:59:41 PM		0.6275 % STD	0.5637 % STD	0.5116 % STD

Index	Date/Time	Zero	Max (E-Field)	Avg (E-Field)	Min (E-Field)
462	04/13/2017 01:59:42 PM		0.5792 % STD	0.5319 % STD	0.4343 % STD
463	04/13/2017 01:59:43 PM		0.5647 % STD	0.5154 % STD	0.4729 % STD
464	04/13/2017 01:59:44 PM		0.5695 % STD	0.5203 % STD	0.4778 % STD
465	04/13/2017 01:59:45 PM		0.5671 % STD	0.5420 % STD	0.5249 % STD
466	04/13/2017 01:59:46 PM		0.5792 % STD	0.4971 % STD	0.4439 % STD
467	04/13/2017 01:59:47 PM		0.5176 % STD	0.4621 % STD	0.4150 % STD
468	04/13/2017 01:59:48 PM		0.6275 % STD	0.5222 % STD	0.4729 % STD
469	04/13/2017 01:59:49 PM		0.6082 % STD	0.5492 % STD	0.4971 % STD
470	04/13/2017 01:59:50 PM		0.5164 % STD	0.4652 % STD	0.4343 % STD
471	04/13/2017 01:59:51 PM		0.4922 % STD	0.3879 % STD	0.2750 % STD
472	04/13/2017 01:59:52 PM		0.5448 % STD	0.4981 % STD	0.4584 % STD
473	04/13/2017 01:59:53 PM		0.4922 % STD	0.4681 % STD	0.4536 % STD
474	04/13/2017 01:59:54 PM		0.5067 % STD	0.4971 % STD	0.4874 % STD
475	04/13/2017 01:59:55 PM		0.5623 % STD	0.5377 % STD	0.5116 % STD
476	04/13/2017 01:59:56 PM		0.5708 % STD	0.5368 % STD	0.5116 % STD
477	04/13/2017 01:59:57 PM		0.5309 % STD	0.4942 % STD	0.4584 % STD
478	04/13/2017 01:59:58 PM		0.5647 % STD	0.5290 % STD	0.4729 % STD
479	04/13/2017 01:59:59 PM		0.4343 % STD	0.4150 % STD	0.4005 % STD
480	04/13/2017 02:00:00 PM		0.6444 % STD	0.5497 % STD	0.4053 % STD
481	04/13/2017 02:00:01 PM		0.5792 % STD	0.4880 % STD	0.4053 % STD
482	04/13/2017 02:00:02 PM		0.5454 % STD	0.5013 % STD	0.4602 % STD
483	04/13/2017 02:00:03 PM		0.3860 % STD	0.2985 % STD	0.2122 % STD
484	04/13/2017 02:00:04 PM		0.4199 % STD	0.3637 % STD	0.2786 % STD
485	04/13/2017 02:00:05 PM		0.4409 % STD	0.3549 % STD	0.2895 % STD
486	04/13/2017 02:00:06 PM		0.5327 % STD	0.4781 % STD	0.3957 % STD
487	04/13/2017 02:00:07 PM		0.4633 % STD	0.3444 % STD	0.1966 % STD
488	04/13/2017 02:00:08 PM		0.5587 % STD	0.4136 % STD	0.2460 % STD
489	04/13/2017 02:00:09 PM		0.3088 % STD	0.2431 % STD	0.1785 % STD
490	04/13/2017 02:00:10 PM		0.3830 % STD	0.2725 % STD	0.1881 % STD
491	04/13/2017 02:00:11 PM		0.5007 % STD	0.3626 % STD	0.1495 % STD
492	04/13/2017 02:00:12 PM		0.3570 % STD	0.3049 % STD	0.2171 % STD
493	04/13/2017 02:00:13 PM		0.4874 % STD	0.4210 % STD	0.3438 % STD
494	04/13/2017 02:00:14 PM		0.3232 % STD	0.2442 % STD	0.2122 % STD
495	04/13/2017 02:00:15 PM		0.4826 % STD	0.3986 % STD	0.2653 % STD
496	04/13/2017 02:00:16 PM		0.3963 % STD	0.3446 % STD	0.2750 % STD
497	04/13/2017 02:00:17 PM		0.6354 % STD	0.5260 % STD	0.4410 % STD
498	04/13/2017 02:00:18 PM		0.4391 % STD	0.3786 % STD	0.3232 % STD
499	04/13/2017 02:00:19 PM		0.6130 % STD	0.4318 % STD	0.2846 % STD
500	04/13/2017 02:00:20 PM		0.3764 % STD	0.2941 % STD	0.2412 % STD
501	04/13/2017 02:00:21 PM		0.4198 % STD	0.3461 % STD	0.3052 % STD
502	04/13/2017 02:00:22 PM		0.5490 % STD	0.4699 % STD	0.4101 % STD
503	04/13/2017 02:00:23 PM		0.5309 % STD	0.4650 % STD	0.3788 % STD
504	04/13/2017 02:00:24 PM		0.5050 % STD	0.4296 % STD	0.3643 % STD
505	04/13/2017 02:00:25 PM		0.5357 % STD	0.4822 % STD	0.3981 % STD
506	04/13/2017 02:00:26 PM		0.5405 % STD	0.4652 % STD	0.3860 % STD
507	04/13/2017 02:00:27 PM		0.4391 % STD	0.3613 % STD	0.3232 % STD
508	04/13/2017 02:00:28 PM		0.4977 % STD	0.4325 % STD	0.3619 % STD
509	04/13/2017 02:00:29 PM		0.4434 % STD	0.4046 % STD	0.3764 % STD
510	04/13/2017 02:00:30 PM		0.4784 % STD	0.4189 % STD	0.3577 % STD
511	04/13/2017 02:00:31 PM		0.4524 % STD	0.3912 % STD	0.3142 % STD
512	04/13/2017 02:00:32 PM		0.4584 % STD	0.3695 % STD	0.2756 % STD
513	04/13/2017 02:00:33 PM		0.4961 % STD	0.4236 % STD	0.3384 % STD
514	04/13/2017 02:00:34 PM		0.4488 % STD	0.3798 % STD	0.2750 % STD
515	04/13/2017 02:00:35 PM		0.4343 % STD	0.3580 % STD	0.2508 % STD

Index	Date/Time	Zero	Max (E-Field)	Avg (E-Field)	Min (E-Field)
516	04/13/2017 02:00:36 PM		0.3619 % STD	0.3130 % STD	0.2605 % STD
517	04/13/2017 02:00:37 PM		0.4747 % STD	0.4022 % STD	0.3522 % STD
518	04/13/2017 02:00:38 PM		0.4887 % STD	0.4043 % STD	0.3329 % STD
519	04/13/2017 02:00:39 PM		0.5098 % STD	0.4722 % STD	0.4343 % STD
520	04/13/2017 02:00:40 PM		0.4192 % STD	0.3405 % STD	0.2315 % STD
521	04/13/2017 02:00:41 PM		0.4386 % STD	0.3906 % STD	0.3680 % STD
522	04/13/2017 02:00:42 PM		0.4826 % STD	0.3848 % STD	0.3474 % STD
523	04/13/2017 02:00:43 PM		0.5551 % STD	0.3802 % STD	0.2557 % STD
524	04/13/2017 02:00:44 PM		0.4965 % STD	0.4037 % STD	0.3281 % STD
525	04/13/2017 02:00:45 PM		0.4778 % STD	0.3977 % STD	0.2515 % STD
526	04/13/2017 02:00:46 PM		0.5019 % STD	0.3773 % STD	0.2508 % STD
527	04/13/2017 02:00:47 PM		0.4681 % STD	0.4414 % STD	0.4150 % STD
528	04/13/2017 02:00:48 PM		0.4796 % STD	0.4347 % STD	0.4053 % STD
529	04/13/2017 02:00:49 PM		0.3908 % STD	0.3242 % STD	0.2557 % STD
530	04/13/2017 02:00:50 PM		0.5394 % STD	0.4725 % STD	0.3908 % STD
531	04/13/2017 02:00:51 PM		0.5164 % STD	0.4321 % STD	0.3154 % STD
532	04/13/2017 02:00:52 PM		0.5713 % STD	0.4631 % STD	0.3009 % STD
533	04/13/2017 02:00:53 PM		0.5695 % STD	0.4888 % STD	0.3927 % STD
534	04/13/2017 02:00:54 PM		0.4005 % STD	0.3713 % STD	0.3474 % STD
535	04/13/2017 02:00:55 PM		0.4422 % STD	0.4140 % STD	0.3733 % STD
536	04/13/2017 02:00:56 PM		0.5116 % STD	0.4443 % STD	0.4053 % STD
537	04/13/2017 02:00:57 PM		0.4681 % STD	0.4565 % STD	0.4391 % STD
538	04/13/2017 02:00:58 PM		0.4584 % STD	0.4246 % STD	0.3812 % STD
539	04/13/2017 02:00:59 PM		0.4584 % STD	0.4350 % STD	0.3667 % STD
540	04/13/2017 02:01:00 PM		0.5840 % STD	0.5419 % STD	0.4874 % STD
541	04/13/2017 02:01:01 PM		0.6517 % STD	0.6262 % STD	0.5792 % STD
542	04/13/2017 02:01:02 PM		0.5744 % STD	0.5589 % STD	0.5164 % STD
543	04/13/2017 02:01:03 PM		0.5309 % STD	0.4353 % STD	0.3715 % STD
544	04/13/2017 02:01:04 PM		1.029 % STD	0.7399 % STD	0.3136 % STD
545	04/13/2017 02:01:05 PM		0.5454 % STD	0.3928 % STD	0.3088 % STD
546	04/13/2017 02:01:06 PM		1.223 % STD	1.032 % STD	0.7049 % STD
547	04/13/2017 02:01:07 PM		0.2943 % STD	0.1968 % STD	0.1157 % STD
548	04/13/2017 02:01:08 PM		0.4343 % STD	0.3339 % STD	0.1833 % STD
549	04/13/2017 02:01:09 PM		0.4295 % STD	0.3551 % STD	0.2364 % STD
550	04/13/2017 02:01:10 PM		0.7145 % STD	0.6459 % STD	0.4971 % STD
551	04/13/2017 02:01:11 PM		0.2746 % STD	0.1244 % STD	0.0000 % STD
552	04/13/2017 02:01:12 PM		0.3377 % STD	0.1831 % STD	0.0723 % STD
553	04/13/2017 02:01:13 PM		0.4729 % STD	0.3918 % STD	0.3377 % STD
554	04/13/2017 02:01:14 PM		0.4198 % STD	0.3484 % STD	0.3039 % STD
555	04/13/2017 02:01:15 PM		0.4391 % STD	0.3556 % STD	0.2460 % STD
556	04/13/2017 02:01:16 PM		0.5599 % STD	0.3783 % STD	0.1785 % STD
557	04/13/2017 02:01:17 PM		0.3232 % STD	0.1669 % STD	0.0820 % STD
558	04/13/2017 02:01:18 PM		0.2267 % STD	0.1734 % STD	0.1302 % STD
559	04/13/2017 02:01:19 PM		0.2846 % STD	0.1958 % STD	0.0723 % STD
560	04/13/2017 02:01:20 PM		0.0868 % STD	0.0666 % STD	0.0434 % STD
561	04/13/2017 02:01:21 PM		0.1109 % STD	0.0516 % STD	0.0000 % STD
562	04/13/2017 02:01:22 PM		0.2702 % STD	0.1109 % STD	0.0193 % STD
563	04/13/2017 02:01:23 PM		0.7484 % STD	0.5780 % STD	0.3812 % STD
564	04/13/2017 02:01:24 PM		0.5750 % STD	0.2741 % STD	0.1061 % STD
565	04/13/2017 02:01:25 PM		1.472 % STD	1.170 % STD	0.6855 % STD
566	04/13/2017 02:01:26 PM		1.433 % STD	1.284 % STD	1.063 % STD
567	04/13/2017 02:01:27 PM		1.507 % STD	1.381 % STD	1.177 % STD
568	04/13/2017 02:01:28 PM		1.507 % STD	1.420 % STD	1.329 % STD
569	04/13/2017 02:01:29 PM		1.549 % STD	1.054 % STD	0.4874 % STD

Index	Date/Time	Zero	Max (E-Field)	Avg (E-Field)	Min (E-Field)
570	04/13/2017 02:01:30 PM		1.265 % STD	0.6848 % STD	0.3667 % STD
571	04/13/2017 02:01:31 PM		1.497 % STD	1.340 % STD	1.193 % STD
572	04/13/2017 02:01:32 PM		1.334 % STD	1.310 % STD	1.254 % STD
573	04/13/2017 02:01:33 PM		2.077 % STD	1.775 % STD	1.266 % STD
574	04/13/2017 02:01:34 PM		1.873 % STD	1.529 % STD	1.225 % STD
575	04/13/2017 02:01:35 PM		1.802 % STD	1.565 % STD	1.284 % STD
576	04/13/2017 02:01:36 PM		1.100 % STD	0.8634 % STD	0.7719 % STD
577	04/13/2017 02:01:37 PM		0.8837 % STD	0.6215 % STD	0.5019 % STD
578	04/13/2017 02:01:38 PM		0.6903 % STD	0.5753 % STD	0.4005 % STD
579	04/13/2017 02:01:39 PM		0.3570 % STD	0.3232 % STD	0.2508 % STD
580	04/13/2017 02:01:40 PM		0.1980 % STD	0.1437 % STD	0.0549 % STD
581	04/13/2017 02:01:41 PM		0.3764 % STD	0.1787 % STD	0.0434 % STD
582	04/13/2017 02:01:42 PM		0.3908 % STD	0.2499 % STD	0.1543 % STD
583	04/13/2017 02:01:43 PM		0.4496 % STD	0.3595 % STD	0.2842 % STD
584	04/13/2017 02:01:44 PM		0.5067 % STD	0.4053 % STD	0.2460 % STD
585	04/13/2017 02:01:45 PM		0.2557 % STD	0.1736 % STD	0.0772 % STD
586	04/13/2017 02:01:46 PM		0.1888 % STD	0.0995 % STD	0.0386 % STD
587	04/13/2017 02:01:47 PM		0.2943 % STD	0.2540 % STD	0.1990 % STD
588	04/13/2017 02:01:48 PM		0.3377 % STD	0.2287 % STD	0.1061 % STD
589	04/13/2017 02:01:49 PM		0.3860 % STD	0.2412 % STD	0.1399 % STD
590	04/13/2017 02:01:50 PM		0.4101 % STD	0.2518 % STD	0.1495 % STD
591	04/13/2017 02:01:51 PM		0.5309 % STD	0.4218 % STD	0.2315 % STD
592	04/13/2017 02:01:52 PM		0.5889 % STD	0.4767 % STD	0.3812 % STD
593	04/13/2017 02:01:53 PM		0.3498 % STD	0.2928 % STD	0.2267 % STD
594	04/13/2017 02:01:54 PM		0.5744 % STD	0.4247 % STD	0.1929 % STD
595	04/13/2017 02:01:55 PM		0.1785 % STD	0.1495 % STD	0.1109 % STD
596	04/13/2017 02:01:56 PM		0.4150 % STD	0.2970 % STD	0.1640 % STD
597	04/13/2017 02:01:57 PM		0.0452 % STD	0.0157 % STD	0.0000 % STD
598	04/13/2017 02:01:58 PM		0.3329 % STD	0.2364 % STD	0.0916 % STD
599	04/13/2017 02:01:59 PM		0.2756 % STD	0.2025 % STD	0.1157 % STD
600	04/13/2017 02:02:00 PM		0.3860 % STD	0.1379 % STD	0.0048 % STD
601	04/13/2017 02:02:01 PM		0.6517 % STD	0.4961 % STD	0.3908 % STD
602	04/13/2017 02:02:02 PM		0.4337 % STD	0.3256 % STD	0.2171 % STD
603	04/13/2017 02:02:03 PM		0.4048 % STD	0.2444 % STD	0.1447 % STD
604	04/13/2017 02:02:04 PM		0.2455 % STD	0.1955 % STD	0.1164 % STD
605	04/13/2017 02:02:05 PM		0.1774 % STD	0.1365 % STD	0.0868 % STD
606	04/13/2017 02:02:06 PM		0.2461 % STD	0.1555 % STD	0.0965 % STD
607	04/13/2017 02:02:07 PM		0.1859 % STD	0.1131 % STD	0.0289 % STD
608	04/13/2017 02:02:08 PM		0.1382 % STD	0.0551 % STD	0.0133 % STD
609	04/13/2017 02:02:09 PM		0.4513 % STD	0.3714 % STD	0.2980 % STD
610	04/13/2017 02:02:10 PM		0.3866 % STD	0.2880 % STD	0.1067 % STD
611	04/13/2017 02:02:11 PM		0.2267 % STD	0.1673 % STD	0.1254 % STD
612	04/13/2017 02:02:12 PM		0.4295 % STD	0.3348 % STD	0.2315 % STD
613	04/13/2017 02:02:13 PM		0.2448 % STD	0.1404 % STD	0.0482 % STD
614	04/13/2017 02:02:14 PM		0.5020 % STD	0.3167 % STD	0.1350 % STD
615	04/13/2017 02:02:15 PM		0.4530 % STD	0.1657 % STD	0.0266 % STD
616	04/13/2017 02:02:16 PM		0.4241 % STD	0.1954 % STD	0.0241 % STD
617	04/13/2017 02:02:17 PM		0.4229 % STD	0.3262 % STD	0.2190 % STD
618	04/13/2017 02:02:18 PM		0.1092 % STD	0.0951 % STD	0.0864 % STD
619	04/13/2017 02:02:19 PM		0.5082 % STD	0.3085 % STD	0.1172 % STD
620	04/13/2017 02:02:20 PM		0.3939 % STD	0.2451 % STD	0.0809 % STD
621	04/13/2017 02:02:21 PM		0.2842 % STD	0.1305 % STD	0.0296 % STD
622	04/13/2017 02:02:22 PM		0.7496 % STD	0.4910 % STD	0.1785 % STD
623	04/13/2017 02:02:23 PM		0.5750 % STD	0.5232 % STD	0.4898 % STD

Index	Date/Time	Zero	Max (E-Field)	Avg (E-Field)	Min (E-Field)
624	04/13/2017 02:02:24 PM		0.6440 % STD	0.5528 % STD	0.4060 % STD
625	04/13/2017 02:02:25 PM		0.3952 % STD	0.2931 % STD	0.1779 % STD
626	04/13/2017 02:02:26 PM		0.4911 % STD	0.3468 % STD	0.2058 % STD
627	04/13/2017 02:02:27 PM		0.4049 % STD	0.2768 % STD	0.1448 % STD
628	04/13/2017 02:02:28 PM		0.4295 % STD	0.2561 % STD	0.1370 % STD
629	04/13/2017 02:02:29 PM		0.7267 % STD	0.5313 % STD	0.3379 % STD
630	04/13/2017 02:02:30 PM		0.3934 % STD	0.2585 % STD	0.0864 % STD
631	04/13/2017 02:02:31 PM		0.2559 % STD	0.1291 % STD	0.0706 % STD
632	04/13/2017 02:02:32 PM		0.5859 % STD	0.4149 % STD	0.3240 % STD
633	04/13/2017 02:02:33 PM		0.6524 % STD	0.4475 % STD	0.2425 % STD
634	04/13/2017 02:02:34 PM		0.5159 % STD	0.4439 % STD	0.3776 % STD
635	04/13/2017 02:02:35 PM		0.4132 % STD	0.2555 % STD	0.0000 % STD
636	04/13/2017 02:02:36 PM		0.1329 % STD	0.0992 % STD	0.0532 % STD
637	04/13/2017 02:02:37 PM		0.3349 % STD	0.1830 % STD	0.0731 % STD
638	04/13/2017 02:02:38 PM		0.1920 % STD	0.1128 % STD	0.0598 % STD
639	04/13/2017 02:02:39 PM		0.3114 % STD	0.2107 % STD	0.1009 % STD
640	04/13/2017 02:02:40 PM		0.2247 % STD	0.1873 % STD	0.1465 % STD
641	04/13/2017 02:02:41 PM		0.1667 % STD	0.1087 % STD	0.0888 % STD
642	04/13/2017 02:02:42 PM		0.3067 % STD	0.2321 % STD	0.1763 % STD
643	04/13/2017 02:02:43 PM		0.1950 % STD	0.1414 % STD	0.0798 % STD
644	04/13/2017 02:02:44 PM		0.4304 % STD	0.2751 % STD	0.1462 % STD
645	04/13/2017 02:02:45 PM		0.2577 % STD	0.2166 % STD	0.1688 % STD
646	04/13/2017 02:02:46 PM		0.2492 % STD	0.1653 % STD	0.0598 % STD
647	04/13/2017 02:02:47 PM		0.1388 % STD	0.0679 % STD	0.0266 % STD
648	04/13/2017 02:02:48 PM		0.3213 % STD	0.2641 % STD	0.2239 % STD
649	04/13/2017 02:02:49 PM		0.4406 % STD	0.3667 % STD	0.2379 % STD
650	04/13/2017 02:02:50 PM		0.4213 % STD	0.2906 % STD	0.1848 % STD
651	04/13/2017 02:02:51 PM		0.1196 % STD	0.1024 % STD	0.0731 % STD
652	04/13/2017 02:02:52 PM		0.2820 % STD	0.2211 % STD	0.1546 % STD
653	04/13/2017 02:02:53 PM		0.1672 % STD	0.0733 % STD	0.0066 % STD
654	04/13/2017 02:02:54 PM		0.1529 % STD	0.0931 % STD	0.0532 % STD
655	04/13/2017 02:02:55 PM		0.2180 % STD	0.1521 % STD	0.0971 % STD
656	04/13/2017 02:02:56 PM		0.0931 % STD	0.0585 % STD	0.0000 % STD
657	04/13/2017 02:02:57 PM		0.1728 % STD	0.1130 % STD	0.0598 % STD
658	04/13/2017 02:02:58 PM		0.1130 % STD	0.0625 % STD	0.0000 % STD
659	04/13/2017 02:02:59 PM		0.0532 % STD	0.0266 % STD	0.0000 % STD
660	04/13/2017 02:03:00 PM		0.1329 % STD	0.0991 % STD	0.0399 % STD
661	04/13/2017 02:03:01 PM		0.2315 % STD	0.1437 % STD	0.0864 % STD
662	04/13/2017 02:03:02 PM		0.1881 % STD	0.1285 % STD	0.0731 % STD
663	04/13/2017 02:03:03 PM		0.2221 % STD	0.1400 % STD	0.0941 % STD
664	04/13/2017 02:03:04 PM		0.1290 % STD	0.0789 % STD	0.0332 % STD
665	04/13/2017 02:03:05 PM		0.2756 % STD	0.2038 % STD	0.0598 % STD
666	04/13/2017 02:03:06 PM		0.3010 % STD	0.2680 % STD	0.2267 % STD
667	04/13/2017 02:03:07 PM		0.2268 % STD	0.1020 % STD	0.0296 % STD
668	04/13/2017 02:03:08 PM		0.1019 % STD	0.0670 % STD	0.0266 % STD
669	04/13/2017 02:03:09 PM		0.1063 % STD	0.0758 % STD	0.0266 % STD
670	04/13/2017 02:03:10 PM		0.1462 % STD	0.1090 % STD	0.0532 % STD
671	04/13/2017 02:03:11 PM		0.0731 % STD	0.0471 % STD	0.0000 % STD
672	04/13/2017 02:03:12 PM		0.0731 % STD	0.0292 % STD	0.0000 % STD
673	04/13/2017 02:03:13 PM		0.1662 % STD	0.0611 % STD	0.0000 % STD
674	04/13/2017 02:03:14 PM		0.0332 % STD	0.0199 % STD	0.0000 % STD
675	04/13/2017 02:03:15 PM		0.1267 % STD	0.0809 % STD	0.0386 % STD
676	04/13/2017 02:03:16 PM		0.1773 % STD	0.1480 % STD	0.1164 % STD
677	04/13/2017 02:03:17 PM		0.3806 % STD	0.1943 % STD	0.0742 % STD

Index	Date/Time	Zero	Max (E-Field)	Avg (E-Field)	Min (E-Field)
678	04/13/2017 02:03:18 PM		0.5986 % STD	0.5029 % STD	0.3963 % STD
679	04/13/2017 02:03:19 PM		0.3661 % STD	0.1401 % STD	0.0532 % STD
680	04/13/2017 02:03:20 PM		0.1787 % STD	0.0785 % STD	0.0465 % STD
681	04/13/2017 02:03:21 PM		0.2839 % STD	0.1279 % STD	0.0145 % STD
682	04/13/2017 02:03:22 PM		0.4101 % STD	0.3729 % STD	0.3257 % STD
683	04/13/2017 02:03:23 PM		0.3342 % STD	0.1540 % STD	0.0145 % STD
684	04/13/2017 02:03:24 PM		0.1967 % STD	0.1506 % STD	0.0947 % STD
685	04/13/2017 02:03:25 PM		0.4196 % STD	0.2747 % STD	0.0803 % STD
686	04/13/2017 02:03:26 PM		0.2154 % STD	0.1438 % STD	0.0966 % STD
687	04/13/2017 02:03:27 PM		0.3548 % STD	0.1867 % STD	0.0665 % STD
688	04/13/2017 02:03:28 PM		0.4285 % STD	0.3858 % STD	0.3270 % STD
689	04/13/2017 02:03:29 PM		0.4163 % STD	0.3055 % STD	0.1702 % STD
690	04/13/2017 02:03:30 PM		0.2221 % STD	0.1711 % STD	0.1110 % STD
691	04/13/2017 02:03:31 PM		0.3065 % STD	0.2490 % STD	0.1791 % STD
692	04/13/2017 02:03:32 PM		0.7425 % STD	0.4231 % STD	0.2605 % STD
693	04/13/2017 02:03:33 PM		0.1495 % STD	0.0600 % STD	0.0000 % STD
694	04/13/2017 02:03:34 PM		0.2060 % STD	0.1019 % STD	0.0211 % STD
695	04/13/2017 02:03:35 PM		0.1974 % STD	0.0975 % STD	0.0266 % STD
696	04/13/2017 02:03:36 PM		0.1582 % STD	0.1042 % STD	0.0731 % STD
697	04/13/2017 02:03:37 PM		0.1662 % STD	0.0851 % STD	0.0399 % STD
698	04/13/2017 02:03:38 PM		0.1927 % STD	0.0851 % STD	0.0000 % STD
699	04/13/2017 02:03:39 PM		0.1462 % STD	0.1024 % STD	0.0332 % STD
700	04/13/2017 02:03:40 PM		0.1396 % STD	0.1183 % STD	0.0931 % STD
701	04/13/2017 02:03:41 PM		0.1770 % STD	0.1238 % STD	0.0465 % STD
702	04/13/2017 02:03:42 PM		0.1130 % STD	0.0851 % STD	0.0598 % STD
703	04/13/2017 02:03:43 PM		0.1981 % STD	0.1061 % STD	0.0332 % STD
704	04/13/2017 02:03:44 PM		0.0598 % STD	0.0279 % STD	0.0000 % STD
705	04/13/2017 02:03:45 PM		0.2332 % STD	0.1556 % STD	0.0997 % STD
706	04/13/2017 02:03:46 PM		0.1552 % STD	0.0510 % STD	0.0000 % STD
707	04/13/2017 02:03:47 PM		0.3323 % STD	0.1303 % STD	0.0066 % STD
708	04/13/2017 02:03:48 PM		0.3456 % STD	0.1635 % STD	0.0066 % STD
709	04/13/2017 02:03:49 PM		0.1196 % STD	0.0984 % STD	0.0665 % STD
710	04/13/2017 02:03:50 PM		0.3124 % STD	0.1874 % STD	0.0266 % STD
711	04/13/2017 02:03:51 PM		0.1927 % STD	0.0758 % STD	0.0000 % STD
712	04/13/2017 02:03:52 PM		0.3523 % STD	0.2260 % STD	0.1263 % STD
713	04/13/2017 02:03:53 PM		0.2326 % STD	0.0891 % STD	0.0399 % STD
714	04/13/2017 02:03:54 PM		0.3124 % STD	0.0811 % STD	0.0133 % STD
715	04/13/2017 02:03:55 PM		0.1396 % STD	0.0532 % STD	0.0133 % STD
716	04/13/2017 02:03:56 PM		0.0798 % STD	0.0412 % STD	0.0133 % STD
717	04/13/2017 02:03:57 PM		0.2054 % STD	0.1115 % STD	0.0332 % STD
718	04/13/2017 02:03:58 PM		0.1063 % STD	0.0824 % STD	0.0532 % STD
719	04/13/2017 02:03:59 PM		0.2757 % STD	0.1613 % STD	0.0326 % STD
720	04/13/2017 02:04:00 PM		0.3197 % STD	0.2328 % STD	0.1302 % STD
721	04/13/2017 02:04:01 PM		0.2493 % STD	0.1905 % STD	0.1117 % STD
722	04/13/2017 02:04:02 PM		0.5862 % STD	0.3563 % STD	0.1894 % STD
723	04/13/2017 02:04:03 PM		0.3911 % STD	0.3000 % STD	0.2215 % STD
724	04/13/2017 02:04:04 PM		0.1998 % STD	0.0867 % STD	0.0000 % STD
725	04/13/2017 02:04:05 PM		0.4442 % STD	0.3227 % STD	0.1322 % STD
726	04/13/2017 02:04:06 PM		0.3608 % STD	0.2797 % STD	0.2142 % STD
727	04/13/2017 02:04:07 PM		0.3503 % STD	0.1683 % STD	0.0731 % STD
728	04/13/2017 02:04:08 PM		0.4909 % STD	0.3727 % STD	0.2046 % STD
729	04/13/2017 02:04:09 PM		0.3977 % STD	0.3191 % STD	0.2782 % STD
730	04/13/2017 02:04:10 PM		0.8144 % STD	0.5710 % STD	0.4176 % STD
731	04/13/2017 02:04:11 PM		0.5915 % STD	0.4344 % STD	0.3162 % STD

Index	Date/Time	Zero	Max (E-Field)	Avg (E-Field)	Min (E-Field)
732	04/13/2017 02:04:12 PM		0.3550 % STD	0.2424 % STD	0.1341 % STD
733	04/13/2017 02:04:13 PM		0.5423 % STD	0.3228 % STD	0.2143 % STD
734	04/13/2017 02:04:14 PM		0.2459 % STD	0.1304 % STD	0.0399 % STD
735	04/13/2017 02:04:15 PM		0.3576 % STD	0.1433 % STD	0.0066 % STD
736	04/13/2017 02:04:16 PM		0.2941 % STD	0.2104 % STD	0.1130 % STD
737	04/13/2017 02:04:17 PM		0.3283 % STD	0.2574 % STD	0.1994 % STD
738	04/13/2017 02:04:18 PM		0.4099 % STD	0.3788 % STD	0.3495 % STD
739	04/13/2017 02:04:19 PM		0.5783 % STD	0.4281 % STD	0.3140 % STD
740	04/13/2017 02:04:20 PM		0.8277 % STD	0.6415 % STD	0.4453 % STD
741	04/13/2017 02:04:21 PM		0.4563 % STD	0.3427 % STD	0.2824 % STD
742	04/13/2017 02:04:22 PM		0.5531 % STD	0.3865 % STD	0.2513 % STD
743	04/13/2017 02:04:23 PM		0.3567 % STD	0.2387 % STD	0.1123 % STD
744	04/13/2017 02:04:24 PM		0.6201 % STD	0.3511 % STD	0.1843 % STD
745	04/13/2017 02:04:25 PM		0.3556 % STD	0.1893 % STD	0.0899 % STD
746	04/13/2017 02:04:26 PM		0.2260 % STD	0.1648 % STD	0.1396 % STD
747	04/13/2017 02:04:27 PM		0.3291 % STD	0.2484 % STD	0.1817 % STD
748	04/13/2017 02:04:28 PM		0.2313 % STD	0.1476 % STD	0.1063 % STD
749	04/13/2017 02:04:29 PM		0.3127 % STD	0.2808 % STD	0.2290 % STD
750	04/13/2017 02:04:30 PM		0.3277 % STD	0.2261 % STD	0.1057 % STD
751	04/13/2017 02:04:31 PM		0.4129 % STD	0.2591 % STD	0.1020 % STD
752	04/13/2017 02:04:32 PM		0.4094 % STD	0.2330 % STD	0.1352 % STD
753	04/13/2017 02:04:33 PM		0.2523 % STD	0.2006 % STD	0.1194 % STD
754	04/13/2017 02:04:34 PM		0.2742 % STD	0.1529 % STD	0.0434 % STD
755	04/13/2017 02:04:35 PM		0.3459 % STD	0.2598 % STD	0.1810 % STD
756	04/13/2017 02:04:36 PM		0.4593 % STD	0.3912 % STD	0.3555 % STD
757	04/13/2017 02:04:37 PM		0.4731 % STD	0.3935 % STD	0.3202 % STD
758	04/13/2017 02:04:38 PM		0.5911 % STD	0.3851 % STD	0.2697 % STD
759	04/13/2017 02:04:39 PM		0.6575 % STD	0.2962 % STD	0.0627 % STD
760	04/13/2017 02:04:40 PM		0.2643 % STD	0.1768 % STD	0.1099 % STD
761	04/13/2017 02:04:41 PM		0.5855 % STD	0.3937 % STD	0.2178 % STD
762	04/13/2017 02:04:42 PM		0.4266 % STD	0.1842 % STD	0.0592 % STD
763	04/13/2017 02:04:43 PM		0.1728 % STD	0.1356 % STD	0.0731 % STD
764	04/13/2017 02:04:44 PM		0.3413 % STD	0.1496 % STD	0.0332 % STD
765	04/13/2017 02:04:45 PM		0.0731 % STD	0.0505 % STD	0.0000 % STD
766	04/13/2017 02:04:46 PM		0.2924 % STD	0.1608 % STD	0.0399 % STD
767	04/13/2017 02:04:47 PM		0.3523 % STD	0.1675 % STD	0.0000 % STD
768	04/13/2017 02:04:48 PM		0.1196 % STD	0.0970 % STD	0.0665 % STD
769	04/13/2017 02:04:49 PM		0.2991 % STD	0.1263 % STD	0.0000 % STD
770	04/13/2017 02:04:50 PM		0.0798 % STD	0.0359 % STD	0.0000 % STD
771	04/13/2017 02:04:51 PM		0.1063 % STD	0.0346 % STD	0.0000 % STD
772	04/13/2017 02:04:52 PM		0.1823 % STD	0.1383 % STD	0.0785 % STD
773	04/13/2017 02:04:53 PM		0.1396 % STD	0.1087 % STD	0.0791 % STD
774	04/13/2017 02:04:54 PM		0.3882 % STD	0.3188 % STD	0.2028 % STD
775	04/13/2017 02:04:55 PM		0.2788 % STD	0.1648 % STD	0.0798 % STD
776	04/13/2017 02:04:56 PM		0.5579 % STD	0.2423 % STD	0.0997 % STD
777	04/13/2017 02:04:57 PM		0.5047 % STD	0.3223 % STD	0.2213 % STD
778	04/13/2017 02:04:58 PM		0.3632 % STD	0.1942 % STD	0.0573 % STD
779	04/13/2017 02:04:59 PM		0.3520 % STD	0.1888 % STD	0.0931 % STD
780	04/13/2017 02:05:00 PM		0.0931 % STD	0.0621 % STD	0.0000 % STD
781	04/13/2017 02:05:01 PM		0.3603 % STD	0.2534 % STD	0.1305 % STD
782	04/13/2017 02:05:02 PM		0.5270 % STD	0.3418 % STD	0.1822 % STD
783	04/13/2017 02:05:03 PM		0.1263 % STD	0.0901 % STD	0.0266 % STD
784	04/13/2017 02:05:04 PM		0.5144 % STD	0.2757 % STD	0.0931 % STD
785	04/13/2017 02:05:05 PM		0.2245 % STD	0.1139 % STD	0.0465 % STD

Index	Date/Time	Zero	Max (E-Field)	Avg (E-Field)	Min (E-Field)
786	04/13/2017 02:05:06 PM		0.1329 % STD	0.1079 % STD	0.0731 % STD
787	04/13/2017 02:05:07 PM		0.2543 % STD	0.1498 % STD	0.0465 % STD
788	04/13/2017 02:05:08 PM		0.0931 % STD	0.0585 % STD	0.0199 % STD
789	04/13/2017 02:05:09 PM		0.2526 % STD	0.1032 % STD	0.0000 % STD
790	04/13/2017 02:05:10 PM		0.1032 % STD	0.0296 % STD	0.0000 % STD
791	04/13/2017 02:05:11 PM		0.1130 % STD	0.0372 % STD	0.0000 % STD
792	04/13/2017 02:05:12 PM		0.3323 % STD	0.1768 % STD	0.0000 % STD
793	04/13/2017 02:05:13 PM		0.0332 % STD	0.0093 % STD	0.0000 % STD
794	04/13/2017 02:05:14 PM		0.2260 % STD	0.1170 % STD	0.0066 % STD
795	04/13/2017 02:05:15 PM		0.1662 % STD	0.0425 % STD	0.0000 % STD
796	04/13/2017 02:05:16 PM		0.0532 % STD	0.0213 % STD	0.0000 % STD
797	04/13/2017 02:05:17 PM		0.1662 % STD	0.0611 % STD	0.0000 % STD
798	04/13/2017 02:05:18 PM		0.1662 % STD	0.0359 % STD	0.0000 % STD
799	04/13/2017 02:05:19 PM		0.0465 % STD	0.0199 % STD	0.0000 % STD
800	04/13/2017 02:05:20 PM		0.1795 % STD	0.0784 % STD	0.0066 % STD
801	04/13/2017 02:05:21 PM		0.0598 % STD	0.0292 % STD	0.0000 % STD
802	04/13/2017 02:05:22 PM		0.0785 % STD	0.0343 % STD	0.0000 % STD
803	04/13/2017 02:05:23 PM		0.0864 % STD	0.0588 % STD	0.0332 % STD
804	04/13/2017 02:05:24 PM		0.0266 % STD	0.0080 % STD	0.0000 % STD
805	04/13/2017 02:05:25 PM		0.0532 % STD	0.0292 % STD	0.0000 % STD
806	04/13/2017 02:05:26 PM		0.0266 % STD	0.0093 % STD	0.0000 % STD
807	04/13/2017 02:05:27 PM		0.2773 % STD	0.0847 % STD	0.0000 % STD
808	04/13/2017 02:05:28 PM		0.0731 % STD	0.0408 % STD	0.0000 % STD
809	04/13/2017 02:05:29 PM		0.2905 % STD	0.0794 % STD	0.0000 % STD
810	04/13/2017 02:05:30 PM		0.2416 % STD	0.0920 % STD	0.0000 % STD
811	04/13/2017 02:05:31 PM		0.0000 % STD	0.0000 % STD	0.0000 % STD
812	04/13/2017 02:05:32 PM		0.1672 % STD	0.0845 % STD	0.0096 % STD
813	04/13/2017 02:05:33 PM		0.0858 % STD	0.0319 % STD	0.0000 % STD
814	04/13/2017 02:05:34 PM		0.2326 % STD	0.0970 % STD	0.0199 % STD
815	04/13/2017 02:05:35 PM		0.0997 % STD	0.0306 % STD	0.0000 % STD
816	04/13/2017 02:05:36 PM		0.0532 % STD	0.0332 % STD	0.0000 % STD
817	04/13/2017 02:05:37 PM		0.5628 % STD	0.4068 % STD	0.2601 % STD
818	04/13/2017 02:05:38 PM		0.1502 % STD	0.0863 % STD	0.0530 % STD
819	04/13/2017 02:05:39 PM		0.1495 % STD	0.0789 % STD	0.0241 % STD
820	04/13/2017 02:05:40 PM		0.5519 % STD	0.3860 % STD	0.2147 % STD
821	04/13/2017 02:05:41 PM		0.1123 % STD	0.0225 % STD	0.0000 % STD
822	04/13/2017 02:05:42 PM		0.1533 % STD	0.0466 % STD	0.0000 % STD
823	04/13/2017 02:05:43 PM		0.1183 % STD	0.0734 % STD	0.0259 % STD
824	04/13/2017 02:05:44 PM		0.0598 % STD	0.0465 % STD	0.0266 % STD
825	04/13/2017 02:05:45 PM		0.1329 % STD	0.0984 % STD	0.0798 % STD
826	04/13/2017 02:05:46 PM		0.1462 % STD	0.0771 % STD	0.0199 % STD
827	04/13/2017 02:05:47 PM		0.0532 % STD	0.0292 % STD	0.0000 % STD
828	04/13/2017 02:05:48 PM		0.2403 % STD	0.1271 % STD	0.0434 % STD
829	04/13/2017 02:05:49 PM		0.0296 % STD	0.0086 % STD	0.0000 % STD
830	04/13/2017 02:05:50 PM		0.1396 % STD	0.0691 % STD	0.0000 % STD
831	04/13/2017 02:05:51 PM		0.1861 % STD	0.0824 % STD	0.0133 % STD
832	04/13/2017 02:05:52 PM		0.1063 % STD	0.0558 % STD	0.0000 % STD
833	04/13/2017 02:05:53 PM		0.2639 % STD	0.1250 % STD	0.0532 % STD
834	04/13/2017 02:05:54 PM		0.1190 % STD	0.0635 % STD	0.0000 % STD
835	04/13/2017 02:05:55 PM		0.0931 % STD	0.0598 % STD	0.0133 % STD
836	04/13/2017 02:05:56 PM		0.3057 % STD	0.1298 % STD	0.0000 % STD
837	04/13/2017 02:05:57 PM		0.0931 % STD	0.0653 % STD	0.0199 % STD
838	04/13/2017 02:05:58 PM		0.1994 % STD	0.1503 % STD	0.0997 % STD
839	04/13/2017 02:05:59 PM		0.1130 % STD	0.0491 % STD	0.0133 % STD

Index	Date/Time	Zero	Max (E-Field)	Avg (E-Field)	Min (E-Field)
840	04/13/2017 02:06:00 PM		0.0931 % STD	0.0480 % STD	0.0000 % STD
841	04/13/2017 02:06:01 PM		0.3502 % STD	0.1652 % STD	0.0682 % STD
842	04/13/2017 02:06:02 PM		0.1242 % STD	0.0634 % STD	0.0000 % STD
843	04/13/2017 02:06:03 PM		0.2315 % STD	0.1958 % STD	0.1785 % STD
844	04/13/2017 02:06:04 PM		0.1662 % STD	0.0900 % STD	0.0048 % STD
845	04/13/2017 02:06:05 PM		0.0532 % STD	0.0266 % STD	0.0000 % STD
846	04/13/2017 02:06:06 PM		0.0332 % STD	0.0146 % STD	0.0000 % STD
847	04/13/2017 02:06:07 PM		0.1861 % STD	0.0758 % STD	0.0066 % STD
848	04/13/2017 02:06:08 PM		0.0332 % STD	0.0106 % STD	0.0000 % STD
849	04/13/2017 02:06:09 PM		0.1263 % STD	0.0678 % STD	0.0000 % STD
850	04/13/2017 02:06:10 PM		0.1130 % STD	0.0266 % STD	0.0000 % STD
851	04/13/2017 02:06:11 PM		0.0399 % STD	0.0093 % STD	0.0000 % STD
852	04/13/2017 02:06:12 PM		0.1263 % STD	0.0811 % STD	0.0532 % STD
853	04/13/2017 02:06:13 PM		0.0199 % STD	0.0040 % STD	0.0000 % STD
854	04/13/2017 02:06:14 PM		0.0066 % STD	0.0013 % STD	0.0000 % STD
855	04/13/2017 02:06:15 PM		0.0465 % STD	0.0253 % STD	0.0000 % STD
856	04/13/2017 02:06:16 PM		0.0000 % STD	0.0000 % STD	0.0000 % STD
857	04/13/2017 02:06:17 PM		0.0000 % STD	0.0000 % STD	0.0000 % STD
858	04/13/2017 02:06:18 PM		0.0465 % STD	0.0173 % STD	0.0000 % STD
859	04/13/2017 02:06:19 PM		0.0266 % STD	0.0053 % STD	0.0000 % STD
860	04/13/2017 02:06:20 PM		0.0000 % STD	0.0000 % STD	0.0000 % STD
861	04/13/2017 02:06:21 PM		0.0000 % STD	0.0000 % STD	0.0000 % STD
862	04/13/2017 02:06:22 PM		0.1329 % STD	0.0492 % STD	0.0000 % STD
863	04/13/2017 02:06:23 PM		0.0199 % STD	0.0080 % STD	0.0000 % STD
864	04/13/2017 02:06:24 PM		0.0798 % STD	0.0332 % STD	0.0000 % STD
865	04/13/2017 02:06:25 PM		0.0731 % STD	0.0412 % STD	0.0000 % STD
866	04/13/2017 02:06:26 PM		0.0798 % STD	0.0399 % STD	0.0000 % STD
867	04/13/2017 02:06:27 PM		0.0332 % STD	0.0133 % STD	0.0000 % STD
868	04/13/2017 02:06:28 PM		0.0864 % STD	0.0425 % STD	0.0066 % STD
869	04/13/2017 02:06:29 PM		0.2725 % STD	0.1196 % STD	0.0465 % STD
870	04/13/2017 02:06:30 PM		0.1462 % STD	0.0346 % STD	0.0000 % STD
871	04/13/2017 02:06:31 PM		0.0332 % STD	0.0066 % STD	0.0000 % STD
872	04/13/2017 02:06:32 PM		0.0665 % STD	0.0253 % STD	0.0000 % STD
873	04/13/2017 02:06:33 PM		0.0798 % STD	0.0213 % STD	0.0000 % STD
874	04/13/2017 02:06:34 PM		0.0665 % STD	0.0399 % STD	0.0000 % STD
875	04/13/2017 02:06:35 PM		0.0931 % STD	0.0332 % STD	0.0000 % STD
876	04/13/2017 02:06:36 PM		0.0066 % STD	0.0013 % STD	0.0000 % STD
877	04/13/2017 02:06:37 PM		0.0133 % STD	0.0027 % STD	0.0000 % STD
878	04/13/2017 02:06:38 PM		0.0133 % STD	0.0027 % STD	0.0000 % STD
879	04/13/2017 02:06:39 PM		0.0731 % STD	0.0372 % STD	0.0000 % STD
880	04/13/2017 02:06:40 PM		0.0798 % STD	0.0452 % STD	0.0000 % STD
881	04/13/2017 02:06:41 PM		0.0000 % STD	0.0000 % STD	0.0000 % STD
882	04/13/2017 02:06:42 PM		0.0133 % STD	0.0027 % STD	0.0000 % STD
883	04/13/2017 02:06:43 PM		0.0864 % STD	0.0399 % STD	0.0133 % STD
884	04/13/2017 02:06:44 PM		0.0066 % STD	0.0013 % STD	0.0000 % STD
885	04/13/2017 02:06:45 PM		0.0399 % STD	0.0120 % STD	0.0000 % STD
886	04/13/2017 02:06:46 PM		0.0000 % STD	0.0000 % STD	0.0000 % STD
887	04/13/2017 02:06:47 PM		0.0266 % STD	0.0053 % STD	0.0000 % STD
888	04/13/2017 02:06:48 PM		0.0066 % STD	0.0013 % STD	0.0000 % STD
889	04/13/2017 02:06:49 PM		0.0000 % STD	0.0000 % STD	0.0000 % STD
890	04/13/2017 02:06:50 PM		0.0000 % STD	0.0000 % STD	0.0000 % STD
891	04/13/2017 02:06:51 PM		0.0000 % STD	0.0000 % STD	0.0000 % STD
892	04/13/2017 02:06:52 PM		0.0000 % STD	0.0000 % STD	0.0000 % STD
893	04/13/2017 02:06:53 PM		0.0332 % STD	0.0093 % STD	0.0000 % STD

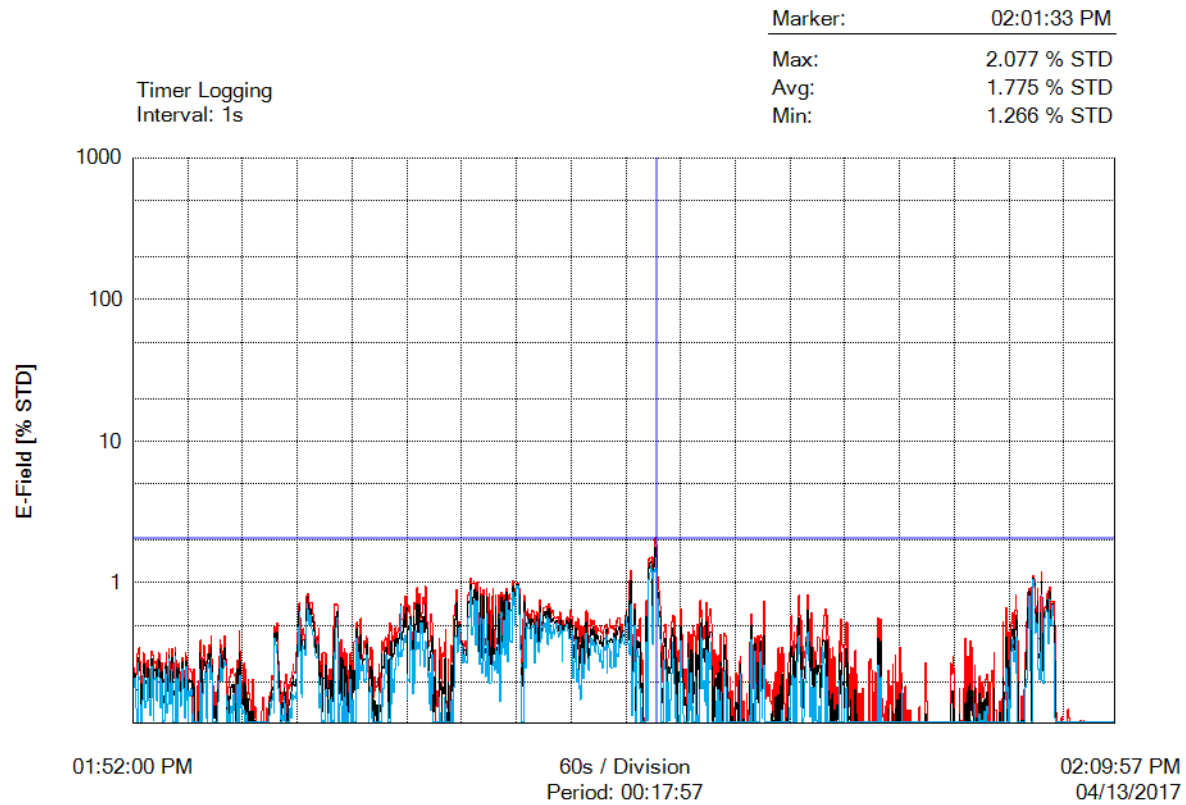
Index	Date/Time	Zero	Max (E-Field)	Avg (E-Field)	Min (E-Field)
894	04/13/2017 02:06:54 PM		0.0000 % STD	0.0000 % STD	0.0000 % STD
895	04/13/2017 02:06:55 PM		0.0332 % STD	0.0066 % STD	0.0000 % STD
896	04/13/2017 02:06:56 PM		0.0434 % STD	0.0135 % STD	0.0000 % STD
897	04/13/2017 02:06:57 PM		0.2702 % STD	0.1415 % STD	0.0193 % STD
898	04/13/2017 02:06:58 PM		0.2274 % STD	0.1719 % STD	0.0959 % STD
899	04/13/2017 02:06:59 PM		0.3016 % STD	0.0844 % STD	0.0000 % STD
900	04/13/2017 02:07:00 PM		0.2523 % STD	0.1281 % STD	0.0579 % STD
901	04/13/2017 02:07:01 PM		0.0761 % STD	0.0192 % STD	0.0000 % STD
902	04/13/2017 02:07:02 PM		0.0864 % STD	0.0319 % STD	0.0000 % STD
903	04/13/2017 02:07:03 PM		0.0562 % STD	0.0216 % STD	0.0000 % STD
904	04/13/2017 02:07:04 PM		0.0066 % STD	0.0013 % STD	0.0000 % STD
905	04/13/2017 02:07:05 PM		0.0332 % STD	0.0146 % STD	0.0000 % STD
906	04/13/2017 02:07:06 PM		0.1795 % STD	0.1188 % STD	0.0000 % STD
907	04/13/2017 02:07:07 PM		0.0598 % STD	0.0279 % STD	0.0066 % STD
908	04/13/2017 02:07:08 PM		0.1075 % STD	0.0414 % STD	0.0000 % STD
909	04/13/2017 02:07:09 PM		0.0864 % STD	0.0397 % STD	0.0066 % STD
910	04/13/2017 02:07:10 PM		0.0798 % STD	0.0412 % STD	0.0133 % STD
911	04/13/2017 02:07:11 PM		0.1795 % STD	0.1024 % STD	0.0266 % STD
912	04/13/2017 02:07:12 PM		0.1329 % STD	0.0917 % STD	0.0532 % STD
913	04/13/2017 02:07:13 PM		0.4066 % STD	0.1425 % STD	0.0266 % STD
914	04/13/2017 02:07:14 PM		0.0997 % STD	0.0798 % STD	0.0399 % STD
915	04/13/2017 02:07:15 PM		0.3044 % STD	0.1699 % STD	0.0665 % STD
916	04/13/2017 02:07:16 PM		0.2687 % STD	0.1842 % STD	0.0864 % STD
917	04/13/2017 02:07:17 PM		0.0931 % STD	0.0731 % STD	0.0465 % STD
918	04/13/2017 02:07:18 PM		0.3855 % STD	0.1941 % STD	0.0665 % STD
919	04/13/2017 02:07:19 PM		0.1728 % STD	0.1263 % STD	0.1063 % STD
920	04/13/2017 02:07:20 PM		0.3523 % STD	0.1701 % STD	0.0731 % STD
921	04/13/2017 02:07:21 PM		0.1728 % STD	0.1143 % STD	0.0798 % STD
922	04/13/2017 02:07:22 PM		0.0798 % STD	0.0465 % STD	0.0000 % STD
923	04/13/2017 02:07:23 PM		0.2592 % STD	0.1848 % STD	0.1396 % STD
924	04/13/2017 02:07:24 PM		0.1795 % STD	0.1103 % STD	0.0598 % STD
925	04/13/2017 02:07:25 PM		0.0997 % STD	0.0891 % STD	0.0665 % STD
926	04/13/2017 02:07:26 PM		0.1396 % STD	0.0944 % STD	0.0665 % STD
927	04/13/2017 02:07:27 PM		0.1263 % STD	0.1103 % STD	0.0731 % STD
928	04/13/2017 02:07:28 PM		0.2193 % STD	0.1648 % STD	0.1196 % STD
929	04/13/2017 02:07:29 PM		0.1529 % STD	0.1103 % STD	0.0598 % STD
930	04/13/2017 02:07:30 PM		0.1196 % STD	0.0851 % STD	0.0598 % STD
931	04/13/2017 02:07:31 PM		0.1994 % STD	0.1436 % STD	0.1063 % STD
932	04/13/2017 02:07:32 PM		0.1539 % STD	0.0766 % STD	0.0332 % STD
933	04/13/2017 02:07:33 PM		0.1640 % STD	0.1226 % STD	0.0931 % STD
934	04/13/2017 02:07:34 PM		0.1852 % STD	0.1504 % STD	0.1249 % STD
935	04/13/2017 02:07:35 PM		0.2070 % STD	0.1070 % STD	0.0332 % STD
936	04/13/2017 02:07:36 PM		0.2259 % STD	0.1693 % STD	0.1350 % STD
937	04/13/2017 02:07:37 PM		0.1157 % STD	0.0475 % STD	0.0000 % STD
938	04/13/2017 02:07:38 PM		0.0465 % STD	0.0244 % STD	0.0000 % STD
939	04/13/2017 02:07:39 PM		0.1963 % STD	0.0698 % STD	0.0000 % STD
940	04/13/2017 02:07:40 PM		0.0332 % STD	0.0106 % STD	0.0000 % STD
941	04/13/2017 02:07:41 PM		0.1994 % STD	0.0452 % STD	0.0000 % STD
942	04/13/2017 02:07:42 PM		0.2393 % STD	0.1009 % STD	0.0314 % STD
943	04/13/2017 02:07:43 PM		0.0864 % STD	0.0470 % STD	0.0000 % STD
944	04/13/2017 02:07:44 PM		0.3196 % STD	0.1817 % STD	0.0798 % STD
945	04/13/2017 02:07:45 PM		0.1268 % STD	0.0956 % STD	0.0839 % STD
946	04/13/2017 02:07:46 PM		0.1256 % STD	0.0655 % STD	0.0465 % STD
947	04/13/2017 02:07:47 PM		0.0532 % STD	0.0319 % STD	0.0000 % STD

Index	Date/Time	Zero	Max (E-Field)	Avg (E-Field)	Min (E-Field)
948	04/13/2017 02:07:48 PM		0.0997 % STD	0.0585 % STD	0.0199 % STD
949	04/13/2017 02:07:49 PM		0.0731 % STD	0.0492 % STD	0.0332 % STD
950	04/13/2017 02:07:50 PM		0.1462 % STD	0.1211 % STD	0.0864 % STD
951	04/13/2017 02:07:51 PM		0.0996 % STD	0.0763 % STD	0.0532 % STD
952	04/13/2017 02:07:52 PM		0.0798 % STD	0.0465 % STD	0.0066 % STD
953	04/13/2017 02:07:53 PM		0.1509 % STD	0.0807 % STD	0.0598 % STD
954	04/13/2017 02:07:54 PM		0.5248 % STD	0.2127 % STD	0.0785 % STD
955	04/13/2017 02:07:55 PM		0.1924 % STD	0.1325 % STD	0.0404 % STD
956	04/13/2017 02:07:56 PM		0.1942 % STD	0.1685 % STD	0.1496 % STD
957	04/13/2017 02:07:57 PM		0.6711 % STD	0.4146 % STD	0.2498 % STD
958	04/13/2017 02:07:58 PM		0.1697 % STD	0.1296 % STD	0.0864 % STD
959	04/13/2017 02:07:59 PM		0.1329 % STD	0.1019 % STD	0.0598 % STD
960	04/13/2017 02:08:00 PM		0.4481 % STD	0.2806 % STD	0.1822 % STD
961	04/13/2017 02:08:01 PM		0.2546 % STD	0.1515 % STD	0.0869 % STD
962	04/13/2017 02:08:02 PM		0.3692 % STD	0.2408 % STD	0.1316 % STD
963	04/13/2017 02:08:03 PM		0.5158 % STD	0.4165 % STD	0.3269 % STD
964	04/13/2017 02:08:04 PM		0.6143 % STD	0.4678 % STD	0.3976 % STD
965	04/13/2017 02:08:05 PM		0.4236 % STD	0.3682 % STD	0.3414 % STD
966	04/13/2017 02:08:06 PM		0.4156 % STD	0.3337 % STD	0.2763 % STD
967	04/13/2017 02:08:07 PM		0.6336 % STD	0.4670 % STD	0.3216 % STD
968	04/13/2017 02:08:08 PM		0.8166 % STD	0.5905 % STD	0.2285 % STD
969	04/13/2017 02:08:09 PM		0.6397 % STD	0.5428 % STD	0.4163 % STD
970	04/13/2017 02:08:10 PM		0.3915 % STD	0.1980 % STD	0.0931 % STD
971	04/13/2017 02:08:11 PM		0.0798 % STD	0.0439 % STD	0.0000 % STD
972	04/13/2017 02:08:12 PM		0.0997 % STD	0.0760 % STD	0.0278 % STD
973	04/13/2017 02:08:13 PM		0.0888 % STD	0.0536 % STD	0.0332 % STD
974	04/13/2017 02:08:14 PM		0.1595 % STD	0.1063 % STD	0.0798 % STD
975	04/13/2017 02:08:15 PM		0.0532 % STD	0.0292 % STD	0.0000 % STD
976	04/13/2017 02:08:16 PM		0.0665 % STD	0.0290 % STD	0.0000 % STD
977	04/13/2017 02:08:17 PM		0.1744 % STD	0.1062 % STD	0.0645 % STD
978	04/13/2017 02:08:18 PM		0.2589 % STD	0.1659 % STD	0.0965 % STD
979	04/13/2017 02:08:19 PM		0.3270 % STD	0.2439 % STD	0.1833 % STD
980	04/13/2017 02:08:20 PM		0.5328 % STD	0.3301 % STD	0.2074 % STD
981	04/13/2017 02:08:21 PM		0.8571 % STD	0.6672 % STD	0.4729 % STD
982	04/13/2017 02:08:22 PM		0.9175 % STD	0.8686 % STD	0.8088 % STD
983	04/13/2017 02:08:23 PM		0.9055 % STD	0.8487 % STD	0.8112 % STD
984	04/13/2017 02:08:24 PM		0.7919 % STD	0.5500 % STD	0.2395 % STD
985	04/13/2017 02:08:25 PM		0.1624 % STD	0.1004 % STD	0.0465 % STD
986	04/13/2017 02:08:26 PM		0.9296 % STD	0.4579 % STD	0.0665 % STD
987	04/13/2017 02:08:27 PM		1.120 % STD	1.080 % STD	1.051 % STD
988	04/13/2017 02:08:28 PM		1.056 % STD	0.9919 % STD	0.9308 % STD
989	04/13/2017 02:08:29 PM		0.9586 % STD	0.6642 % STD	0.4391 % STD
990	04/13/2017 02:08:30 PM		0.6855 % STD	0.6090 % STD	0.5152 % STD
991	04/13/2017 02:08:31 PM		0.5309 % STD	0.4940 % STD	0.4434 % STD
992	04/13/2017 02:08:32 PM		0.9031 % STD	0.7432 % STD	0.5134 % STD
993	04/13/2017 02:08:33 PM		0.4005 % STD	0.3168 % STD	0.2430 % STD
994	04/13/2017 02:08:34 PM		0.4011 % STD	0.2916 % STD	0.2075 % STD
995	04/13/2017 02:08:35 PM		0.8112 % STD	0.6066 % STD	0.3184 % STD
996	04/13/2017 02:08:36 PM		1.198 % STD	1.018 % STD	0.8354 % STD
997	04/13/2017 02:08:37 PM		0.7919 % STD	0.4390 % STD	0.2026 % STD
998	04/13/2017 02:08:38 PM		0.3088 % STD	0.2372 % STD	0.1954 % STD
999	04/13/2017 02:08:39 PM		0.5726 % STD	0.4792 % STD	0.3891 % STD
1000	04/13/2017 02:08:40 PM		0.6783 % STD	0.6228 % STD	0.5684 % STD
1001	04/13/2017 02:08:41 PM		0.6596 % STD	0.6478 % STD	0.6360 % STD

Index	Date/Time	Zero	Max (E-Field)	Avg (E-Field)	Min (E-Field)
1002	04/13/2017 02:08:42 PM		0.8444 % STD	0.7515 % STD	0.6275 % STD
1003	04/13/2017 02:08:43 PM		0.8680 % STD	0.7588 % STD	0.6166 % STD
1004	04/13/2017 02:08:44 PM		0.6396 % STD	0.4909 % STD	0.3715 % STD
1005	04/13/2017 02:08:45 PM		0.9272 % STD	0.8681 % STD	0.7647 % STD
1006	04/13/2017 02:08:46 PM		0.6215 % STD	0.5607 % STD	0.5164 % STD
1007	04/13/2017 02:08:47 PM		0.7411 % STD	0.6448 % STD	0.4989 % STD
1008	04/13/2017 02:08:48 PM		0.7471 % STD	0.7178 % STD	0.7000 % STD
1009	04/13/2017 02:08:49 PM		0.6656 % STD	0.6169 % STD	0.5865 % STD
1010	04/13/2017 02:08:50 PM		0.7435 % STD	0.5498 % STD	0.3733 % STD
1011	04/13/2017 02:08:51 PM		0.4893 % STD	0.2778 % STD	0.1110 % STD
1012	04/13/2017 02:08:52 PM		0.0997 % STD	0.0662 % STD	0.0266 % STD
1013	04/13/2017 02:08:53 PM		0.1196 % STD	0.0824 % STD	0.0332 % STD
1014	04/13/2017 02:08:54 PM		0.0864 % STD	0.0372 % STD	0.0000 % STD
1015	04/13/2017 02:08:55 PM		0.0532 % STD	0.0133 % STD	0.0000 % STD
1016	04/13/2017 02:08:56 PM		0.0532 % STD	0.0186 % STD	0.0000 % STD
1017	04/13/2017 02:08:57 PM		0.0532 % STD	0.0467 % STD	0.0308 % STD
1018	04/13/2017 02:08:58 PM		0.1123 % STD	0.0735 % STD	0.0248 % STD
1019	04/13/2017 02:08:59 PM		0.0266 % STD	0.0066 % STD	0.0000 % STD
1020	04/13/2017 02:09:00 PM		0.0399 % STD	0.0133 % STD	0.0000 % STD
1021	04/13/2017 02:09:01 PM		0.0465 % STD	0.0253 % STD	0.0000 % STD
1022	04/13/2017 02:09:02 PM		0.0532 % STD	0.0211 % STD	0.0000 % STD
1023	04/13/2017 02:09:03 PM		0.0519 % STD	0.0113 % STD	0.0000 % STD
1024	04/13/2017 02:09:04 PM		0.0482 % STD	0.0241 % STD	0.0000 % STD
1025	04/13/2017 02:09:05 PM		0.1279 % STD	0.0779 % STD	0.0289 % STD
1026	04/13/2017 02:09:06 PM		0.1109 % STD	0.0723 % STD	0.0338 % STD
1027	04/13/2017 02:09:07 PM		0.0965 % STD	0.0642 % STD	0.0404 % STD
1028	04/13/2017 02:09:08 PM		0.0386 % STD	0.0183 % STD	0.0000 % STD
1029	04/13/2017 02:09:09 PM		0.0145 % STD	0.0029 % STD	0.0000 % STD
1030	04/13/2017 02:09:10 PM		0.0048 % STD	0.0010 % STD	0.0000 % STD
1031	04/13/2017 02:09:11 PM		0.0193 % STD	0.0058 % STD	0.0000 % STD
1032	04/13/2017 02:09:12 PM		0.0820 % STD	0.0405 % STD	0.0000 % STD
1033	04/13/2017 02:09:13 PM		0.0289 % STD	0.0154 % STD	0.0000 % STD
1034	04/13/2017 02:09:14 PM		0.0193 % STD	0.0087 % STD	0.0000 % STD
1035	04/13/2017 02:09:15 PM		0.0096 % STD	0.0019 % STD	0.0000 % STD
1036	04/13/2017 02:09:16 PM		0.0000 % STD	0.0000 % STD	0.0000 % STD
1037	04/13/2017 02:09:17 PM		0.0241 % STD	0.0058 % STD	0.0000 % STD
1038	04/13/2017 02:09:18 PM		0.0338 % STD	0.0106 % STD	0.0000 % STD
1039	04/13/2017 02:09:19 PM		0.1061 % STD	0.0521 % STD	0.0096 % STD
1040	04/13/2017 02:09:20 PM		0.0145 % STD	0.0048 % STD	0.0000 % STD
1041	04/13/2017 02:09:21 PM		0.0000 % STD	0.0000 % STD	0.0000 % STD
1042	04/13/2017 02:09:22 PM		0.1061 % STD	0.0608 % STD	0.0241 % STD
1043	04/13/2017 02:09:23 PM		0.0820 % STD	0.0270 % STD	0.0000 % STD
1044	04/13/2017 02:09:24 PM		0.0241 % STD	0.0048 % STD	0.0000 % STD
1045	04/13/2017 02:09:25 PM		0.0241 % STD	0.0096 % STD	0.0000 % STD
1046	04/13/2017 02:09:26 PM		0.0338 % STD	0.0106 % STD	0.0000 % STD
1047	04/13/2017 02:09:27 PM		0.0000 % STD	0.0000 % STD	0.0000 % STD
1048	04/13/2017 02:09:28 PM		0.0338 % STD	0.0154 % STD	0.0000 % STD
1049	04/13/2017 02:09:29 PM		0.0193 % STD	0.0096 % STD	0.0000 % STD
1050	04/13/2017 02:09:30 PM		0.0434 % STD	0.0135 % STD	0.0000 % STD
1051	04/13/2017 02:09:31 PM		0.0000 % STD	0.0000 % STD	0.0000 % STD
1052	04/13/2017 02:09:32 PM		0.0000 % STD	0.0000 % STD	0.0000 % STD
1053	04/13/2017 02:09:33 PM		0.0000 % STD	0.0000 % STD	0.0000 % STD
1054	04/13/2017 02:09:34 PM		0.0000 % STD	0.0000 % STD	0.0000 % STD
1055	04/13/2017 02:09:35 PM		0.0000 % STD	0.0000 % STD	0.0000 % STD

Index	Date/Time	Zero	Max (E-Field)	Avg (E-Field)	Min (E-Field)
1056	04/13/2017 02:09:36 PM		0.0000 % STD	0.0000 % STD	0.0000 % STD
1057	04/13/2017 02:09:37 PM		0.0000 % STD	0.0000 % STD	0.0000 % STD
1058	04/13/2017 02:09:38 PM		0.0000 % STD	0.0000 % STD	0.0000 % STD
1059	04/13/2017 02:09:39 PM		0.0000 % STD	0.0000 % STD	0.0000 % STD
1060	04/13/2017 02:09:40 PM		0.0000 % STD	0.0000 % STD	0.0000 % STD
1061	04/13/2017 02:09:41 PM		0.0000 % STD	0.0000 % STD	0.0000 % STD
1062	04/13/2017 02:09:42 PM		0.0000 % STD	0.0000 % STD	0.0000 % STD
1063	04/13/2017 02:09:43 PM		0.0000 % STD	0.0000 % STD	0.0000 % STD
1064	04/13/2017 02:09:44 PM		0.0000 % STD	0.0000 % STD	0.0000 % STD
1065	04/13/2017 02:09:45 PM		0.0000 % STD	0.0000 % STD	0.0000 % STD
1066	04/13/2017 02:09:46 PM		0.0000 % STD	0.0000 % STD	0.0000 % STD
1067	04/13/2017 02:09:47 PM		0.0000 % STD	0.0000 % STD	0.0000 % STD
1068	04/13/2017 02:09:48 PM		0.0000 % STD	0.0000 % STD	0.0000 % STD
1069	04/13/2017 02:09:49 PM		0.0000 % STD	0.0000 % STD	0.0000 % STD
1070	04/13/2017 02:09:50 PM		0.0000 % STD	0.0000 % STD	0.0000 % STD
1071	04/13/2017 02:09:51 PM		0.0000 % STD	0.0000 % STD	0.0000 % STD
1072	04/13/2017 02:09:52 PM		0.0000 % STD	0.0000 % STD	0.0000 % STD
1073	04/13/2017 02:09:53 PM		0.0000 % STD	0.0000 % STD	0.0000 % STD
1074	04/13/2017 02:09:54 PM		0.0000 % STD	0.0000 % STD	0.0000 % STD
1075	04/13/2017 02:09:55 PM		0.0000 % STD	0.0000 % STD	0.0000 % STD
1076	04/13/2017 02:09:56 PM		0.0000 % STD	0.0000 % STD	0.0000 % STD
1077	04/13/2017 02:09:57 PM		0.0000 % STD	0.0000 % STD	0.0000 % STD

Graph



Parameters

Number of Sub Indices	1077
Storing Date	04/13/2017
Storing Time	01:52:00 PM
Dataset Type	TIM
Voice Comment Available	NO
Dataset Fine Type	T1
GPS Flag	DIFF
Device Product Name	NBM-550
Device Serial Number	B-0054
Device Cal Due Date	02/06/2019
Probe Product Name	EA5091
Probe Serial Number	01053
Probe Cal Due Date	02/03/2019
Probe Field Type	E
Probe Connection Type	C
Probe Lower Frequency Limit A	300 kHz
Probe Upper Frequency Limit A	50 GHz
Probe Lower Frequency Limit B	300 kHz
Probe Upper Frequency Limit B	50 GHz
Probe Emin A	4.340 V/m
Probe Emax A	150.0 V/m
Probe Emin B	4.340 V/m
Probe Emax B	150.0 V/m
Shaped Probe	YES
Standard ID	1
Standard Name	FCC96-326,occ
Apply Standard	ON
Frequency	100 MHz
Apply Correction Frequency	OFF
Eref_E(f)	61.40 V/m
Eref_H(f)	61.45 V/m
Combi Probe Use	E_H
Unit	mW/cm ²
Results Format	VARIABLE
Auto-Zero Interval	OFF
Result Type	-
Averaging Time	-
Average Progress	-
Spatial AVG Mode	-
Store Condition	-
Storing Range	-
Cond. Stop Time	-
Upper Threshold	-
Lower Threshold	-
Timer Interval	1 sec
Timer Duration	02:00:00
History Time Scale	-
Time progress of current segment	-

Test Report

Date 04/13/2017
 Time 02:52:45 PM
 Page 1

Instrument / Site

Meter	Probe	
Model: NBM-550	Model: EA5091	
S/N: B-0054	S/N: 01053	
Calibration Due Date 02/06/2019	Calibration Due Date 02/03/2019	

Site	Coordinates
	Latitude: 38.24564
	Longitude: -85.75802

Comment

Measured Values

Timer: Start Time 02:52:45 PM, Period 0h 6' 57", Interval 1s

Index	Date/Time	Zero	Max (E-Field)	Avg (E-Field)	Min (E-Field)
1	04/13/2017 02:52:46 PM		1.350 % STD	1.059 % STD	0.7774 % STD
2	04/13/2017 02:52:47 PM		1.808 % STD	1.709 % STD	1.557 % STD
3	04/13/2017 02:52:48 PM		1.445 % STD	0.9685 % STD	0.6227 % STD
4	04/13/2017 02:52:49 PM		0.6275 % STD	0.5552 % STD	0.4822 % STD
5	04/13/2017 02:52:50 PM		0.5867 % STD	0.5321 % STD	0.4694 % STD
6	04/13/2017 02:52:51 PM		0.5846 % STD	0.5496 % STD	0.4971 % STD
7	04/13/2017 02:52:52 PM		0.7243 % STD	0.5545 % STD	0.4150 % STD
8	04/13/2017 02:52:53 PM		0.4453 % STD	0.3300 % STD	0.2069 % STD
9	04/13/2017 02:52:54 PM		1.083 % STD	0.7884 % STD	0.4428 % STD
10	04/13/2017 02:52:55 PM		0.4905 % STD	0.3001 % STD	0.2014 % STD
11	04/13/2017 02:52:56 PM		0.6843 % STD	0.4461 % STD	0.1387 % STD
12	04/13/2017 02:52:57 PM		0.9326 % STD	0.7357 % STD	0.6033 % STD
13	04/13/2017 02:52:58 PM		0.7044 % STD	0.5852 % STD	0.5038 % STD
14	04/13/2017 02:52:59 PM		0.9103 % STD	0.6277 % STD	0.4132 % STD
15	04/13/2017 02:53:00 PM		0.8783 % STD	0.8125 % STD	0.7376 % STD
16	04/13/2017 02:53:01 PM		1.063 % STD	0.8901 % STD	0.5720 % STD
17	04/13/2017 02:53:02 PM		0.8070 % STD	0.6761 % STD	0.5394 % STD
18	04/13/2017 02:53:03 PM		0.9441 % STD	0.8278 % STD	0.7407 % STD
19	04/13/2017 02:53:04 PM		1.486 % STD	1.243 % STD	0.9671 % STD
20	04/13/2017 02:53:05 PM		1.199 % STD	0.8821 % STD	0.5925 % STD
21	04/13/2017 02:53:06 PM		1.000 % STD	0.8419 % STD	0.7314 % STD
22	04/13/2017 02:53:07 PM		1.534 % STD	1.259 % STD	0.9991 % STD
23	04/13/2017 02:53:08 PM		1.039 % STD	0.7746 % STD	0.6499 % STD
24	04/13/2017 02:53:09 PM		0.6264 % STD	0.5255 % STD	0.3994 % STD
25	04/13/2017 02:53:10 PM		0.9810 % STD	0.8107 % STD	0.6319 % STD
26	04/13/2017 02:53:11 PM		1.008 % STD	0.7220 % STD	0.3540 % STD
27	04/13/2017 02:53:12 PM		2.650 % STD	1.167 % STD	0.2147 % STD
28	04/13/2017 02:53:13 PM		2.904 % STD	1.824 % STD	1.172 % STD
29	04/13/2017 02:53:14 PM		3.962 % STD	3.191 % STD	2.013 % STD
30	04/13/2017 02:53:15 PM		2.147 % STD	1.750 % STD	1.508 % STD

Index	Date/Time	Zero	Max (E-Field)	Avg (E-Field)	Min (E-Field)
31	04/13/2017 02:53:16 PM		6.345 % STD	3.363 % STD	1.371 % STD
32	04/13/2017 02:53:17 PM		4.522 % STD	2.777 % STD	1.748 % STD
33	04/13/2017 02:53:18 PM		3.194 % STD	2.435 % STD	2.002 % STD
34	04/13/2017 02:53:19 PM		2.820 % STD	2.376 % STD	1.678 % STD
35	04/13/2017 02:53:20 PM		4.022 % STD	3.338 % STD	1.917 % STD
36	04/13/2017 02:53:21 PM		6.116 % STD	5.165 % STD	4.267 % STD
37	04/13/2017 02:53:22 PM		9.720 % STD	8.740 % STD	7.226 % STD
38	04/13/2017 02:53:23 PM		12.00 % STD	11.20 % STD	10.07 % STD
39	04/13/2017 02:53:24 PM		11.08 % STD	6.760 % STD	2.116 % STD
40	04/13/2017 02:53:25 PM		3.040 % STD	2.329 % STD	1.329 % STD
41	04/13/2017 02:53:26 PM		2.197 % STD	1.320 % STD	0.8287 % STD
42	04/13/2017 02:53:27 PM		0.7255 % STD	0.6333 % STD	0.5118 % STD
43	04/13/2017 02:53:28 PM		0.9937 % STD	0.8835 % STD	0.7357 % STD
44	04/13/2017 02:53:29 PM		1.053 % STD	0.8786 % STD	0.7562 % STD
45	04/13/2017 02:53:30 PM		0.9009 % STD	0.7507 % STD	0.6610 % STD
46	04/13/2017 02:53:31 PM		1.375 % STD	1.024 % STD	0.4925 % STD
47	04/13/2017 02:53:32 PM		3.006 % STD	1.261 % STD	0.5076 % STD
48	04/13/2017 02:53:33 PM		3.080 % STD	1.572 % STD	0.6789 % STD
49	04/13/2017 02:53:34 PM		1.336 % STD	1.066 % STD	0.9375 % STD
50	04/13/2017 02:53:35 PM		4.506 % STD	3.130 % STD	1.780 % STD
51	04/13/2017 02:53:36 PM		5.932 % STD	4.612 % STD	2.242 % STD
52	04/13/2017 02:53:37 PM		4.383 % STD	3.122 % STD	1.425 % STD
53	04/13/2017 02:53:38 PM		4.083 % STD	2.382 % STD	0.4754 % STD
54	04/13/2017 02:53:39 PM		1.560 % STD	1.009 % STD	0.5021 % STD
55	04/13/2017 02:53:40 PM		1.245 % STD	0.8231 % STD	0.4774 % STD
56	04/13/2017 02:53:41 PM		2.501 % STD	1.500 % STD	0.4840 % STD
57	04/13/2017 02:53:42 PM		1.278 % STD	1.108 % STD	1.031 % STD
58	04/13/2017 02:53:43 PM		2.769 % STD	1.689 % STD	1.073 % STD
59	04/13/2017 02:53:44 PM		9.409 % STD	6.160 % STD	3.308 % STD
60	04/13/2017 02:53:45 PM		8.765 % STD	4.118 % STD	1.107 % STD
61	04/13/2017 02:53:46 PM		8.524 % STD	4.244 % STD	1.690 % STD
62	04/13/2017 02:53:47 PM		7.528 % STD	6.645 % STD	5.229 % STD
63	04/13/2017 02:53:48 PM		2.959 % STD	1.698 % STD	0.9979 % STD
64	04/13/2017 02:53:49 PM		18.91 % STD	12.70 % STD	4.073 % STD
65	04/13/2017 02:53:50 PM		16.05 % STD	11.03 % STD	6.297 % STD
66	04/13/2017 02:53:51 PM		5.052 % STD	4.009 % STD	3.247 % STD
67	04/13/2017 02:53:52 PM		12.03 % STD	8.826 % STD	6.015 % STD
68	04/13/2017 02:53:53 PM		3.538 % STD	2.080 % STD	1.421 % STD
69	04/13/2017 02:53:54 PM		1.415 % STD	1.330 % STD	1.235 % STD
70	04/13/2017 02:53:55 PM		1.134 % STD	0.6000 % STD	0.2981 % STD
71	04/13/2017 02:53:56 PM		0.3013 % STD	0.2515 % STD	0.1992 % STD
72	04/13/2017 02:53:57 PM		0.5151 % STD	0.4812 % STD	0.4076 % STD
73	04/13/2017 02:53:58 PM		0.2916 % STD	0.2361 % STD	0.1575 % STD
74	04/13/2017 02:53:59 PM		0.8885 % STD	0.6719 % STD	0.3676 % STD
75	04/13/2017 02:54:00 PM		0.8855 % STD	0.5020 % STD	0.2551 % STD
76	04/13/2017 02:54:01 PM		1.267 % STD	0.9899 % STD	0.4719 % STD
77	04/13/2017 02:54:02 PM		1.538 % STD	1.079 % STD	0.7459 % STD
78	04/13/2017 02:54:03 PM		2.182 % STD	1.703 % STD	1.253 % STD
79	04/13/2017 02:54:04 PM		2.553 % STD	1.569 % STD	1.182 % STD
80	04/13/2017 02:54:05 PM		5.383 % STD	3.478 % STD	1.862 % STD
81	04/13/2017 02:54:06 PM		13.05 % STD	8.183 % STD	3.629 % STD
82	04/13/2017 02:54:07 PM		29.18 % STD	21.39 % STD	15.06 % STD
83	04/13/2017 02:54:08 PM		30.21 % STD	28.69 % STD	27.05 % STD
84	04/13/2017 02:54:09 PM		26.12 % STD	22.94 % STD	20.88 % STD
85	04/13/2017 02:54:10 PM		15.49 % STD	8.021 % STD	3.636 % STD
86	04/13/2017 02:54:11 PM		3.574 % STD	2.557 % STD	1.770 % STD

Index	Date/Time	Zero	Max (E-Field)	Avg (E-Field)	Min (E-Field)
87	04/13/2017 02:54:12 PM		5.381 % STD	3.506 % STD	2.100 % STD
88	04/13/2017 02:54:13 PM		1.782 % STD	1.246 % STD	0.9563 % STD
89	04/13/2017 02:54:14 PM		2.883 % STD	1.733 % STD	1.271 % STD
90	04/13/2017 02:54:15 PM		13.42 % STD	9.131 % STD	4.610 % STD
91	04/13/2017 02:54:16 PM		13.27 % STD	10.57 % STD	7.738 % STD
92	04/13/2017 02:54:17 PM		6.463 % STD	4.257 % STD	2.139 % STD
93	04/13/2017 02:54:18 PM		5.183 % STD	3.712 % STD	2.027 % STD
94	04/13/2017 02:54:19 PM		14.07 % STD	9.580 % STD	6.587 % STD
95	04/13/2017 02:54:20 PM		73.91 % STD	48.22 % STD	18.97 % STD
96	04/13/2017 02:54:21 PM		55.19 % STD	34.93 % STD	20.63 % STD
97	04/13/2017 02:54:22 PM		17.16 % STD	12.29 % STD	8.082 % STD
98	04/13/2017 02:54:23 PM		47.37 % STD	37.17 % STD	27.68 % STD
99	04/13/2017 02:54:24 PM		58.45 % STD	52.07 % STD	43.21 % STD
100	04/13/2017 02:54:25 PM		38.79 % STD	24.50 % STD	12.57 % STD
101	04/13/2017 02:54:26 PM		9.093 % STD	4.244 % STD	1.678 % STD
102	04/13/2017 02:54:27 PM		2.649 % STD	2.309 % STD	2.008 % STD
103	04/13/2017 02:54:28 PM		3.005 % STD	1.734 % STD	0.3329 % STD
104	04/13/2017 02:54:29 PM		0.2460 % STD	0.1158 % STD	0.0434 % STD
105	04/13/2017 02:54:30 PM		0.6323 % STD	0.4141 % STD	0.1688 % STD
106	04/13/2017 02:54:31 PM		0.5937 % STD	0.2943 % STD	0.0868 % STD
107	04/13/2017 02:54:32 PM		0.3039 % STD	0.1630 % STD	0.0675 % STD
108	04/13/2017 02:54:33 PM		0.5762 % STD	0.4250 % STD	0.2943 % STD
109	04/13/2017 02:54:34 PM		0.3522 % STD	0.2065 % STD	0.1206 % STD
110	04/13/2017 02:54:35 PM		0.4446 % STD	0.4036 % STD	0.3329 % STD
111	04/13/2017 02:54:36 PM		0.4536 % STD	0.3368 % STD	0.2605 % STD
112	04/13/2017 02:54:37 PM		1.368 % STD	1.087 % STD	0.5502 % STD
113	04/13/2017 02:54:38 PM		2.532 % STD	1.991 % STD	1.159 % STD
114	04/13/2017 02:54:39 PM		2.241 % STD	1.552 % STD	1.140 % STD
115	04/13/2017 02:54:40 PM		1.373 % STD	1.262 % STD	1.106 % STD
116	04/13/2017 02:54:41 PM		3.156 % STD	2.120 % STD	1.169 % STD
117	04/13/2017 02:54:42 PM		2.260 % STD	1.246 % STD	0.7967 % STD
118	04/13/2017 02:54:43 PM		1.890 % STD	1.562 % STD	1.057 % STD
119	04/13/2017 02:54:44 PM		1.140 % STD	0.8403 % STD	0.5212 % STD
120	04/13/2017 02:54:45 PM		2.691 % STD	1.818 % STD	1.237 % STD
121	04/13/2017 02:54:46 PM		3.044 % STD	2.339 % STD	1.629 % STD
122	04/13/2017 02:54:47 PM		1.233 % STD	0.8855 % STD	0.7163 % STD
123	04/13/2017 02:54:48 PM		0.7429 % STD	0.6157 % STD	0.5357 % STD
124	04/13/2017 02:54:49 PM		0.6837 % STD	0.4027 % STD	0.2508 % STD
125	04/13/2017 02:54:50 PM		1.348 % STD	0.8269 % STD	0.3329 % STD
126	04/13/2017 02:54:51 PM		1.475 % STD	1.053 % STD	0.8402 % STD
127	04/13/2017 02:54:52 PM		0.9272 % STD	0.7957 % STD	0.7097 % STD
128	04/13/2017 02:54:53 PM		0.7725 % STD	0.7058 % STD	0.5695 % STD
129	04/13/2017 02:54:54 PM		2.348 % STD	1.380 % STD	0.6040 % STD
130	04/13/2017 02:54:55 PM		4.317 % STD	3.414 % STD	3.031 % STD
131	04/13/2017 02:54:56 PM		4.958 % STD	3.874 % STD	2.605 % STD
132	04/13/2017 02:54:57 PM		2.562 % STD	2.172 % STD	1.891 % STD
133	04/13/2017 02:54:58 PM		2.085 % STD	1.998 % STD	1.901 % STD
134	04/13/2017 02:54:59 PM		1.072 % STD	0.4335 % STD	0.1399 % STD
135	04/13/2017 02:55:00 PM		0.5309 % STD	0.4594 % STD	0.3812 % STD
136	04/13/2017 02:55:01 PM		0.3667 % STD	0.3030 % STD	0.2653 % STD
137	04/13/2017 02:55:02 PM		0.2557 % STD	0.2209 % STD	0.1881 % STD
138	04/13/2017 02:55:03 PM		0.3764 % STD	0.3030 % STD	0.2315 % STD
139	04/13/2017 02:55:04 PM		0.5363 % STD	0.4016 % STD	0.2991 % STD
140	04/13/2017 02:55:05 PM		0.7919 % STD	0.6015 % STD	0.3619 % STD
141	04/13/2017 02:55:06 PM		0.6021 % STD	0.4312 % STD	0.2508 % STD
142	04/13/2017 02:55:07 PM		0.8644 % STD	0.4411 % STD	0.2605 % STD

Index	Date/Time	Zero	Max (E-Field)	Avg (E-Field)	Min (E-Field)
143	04/13/2017 02:55:08 PM		2.718 % STD	2.110 % STD	1.422 % STD
144	04/13/2017 02:55:09 PM		1.892 % STD	1.161 % STD	0.6613 % STD
145	04/13/2017 02:55:10 PM		3.375 % STD	1.866 % STD	0.6662 % STD
146	04/13/2017 02:55:11 PM		8.902 % STD	5.988 % STD	4.035 % STD
147	04/13/2017 02:55:12 PM		31.12 % STD	20.77 % STD	10.36 % STD
148	04/13/2017 02:55:13 PM		24.28 % STD	14.33 % STD	7.456 % STD
149	04/13/2017 02:55:14 PM		5.001 % STD	3.608 % STD	2.795 % STD
150	04/13/2017 02:55:15 PM		2.859 % STD	2.503 % STD	1.596 % STD
151	04/13/2017 02:55:16 PM		0.7677 % STD	0.3673 % STD	0.1495 % STD
152	04/13/2017 02:55:17 PM		0.5173 % STD	0.3426 % STD	0.2074 % STD
153	04/13/2017 02:55:18 PM		0.3860 % STD	0.3542 % STD	0.2816 % STD
154	04/13/2017 02:55:19 PM		0.4844 % STD	0.4019 % STD	0.3039 % STD
155	04/13/2017 02:55:20 PM		0.7387 % STD	0.4556 % STD	0.2605 % STD
156	04/13/2017 02:55:21 PM		0.6710 % STD	0.5408 % STD	0.4192 % STD
157	04/13/2017 02:55:22 PM		0.5478 % STD	0.3874 % STD	0.2744 % STD
158	04/13/2017 02:55:23 PM		0.4971 % STD	0.4179 % STD	0.3149 % STD
159	04/13/2017 02:55:24 PM		0.4563 % STD	0.3025 % STD	0.2448 % STD
160	04/13/2017 02:55:25 PM		0.4750 % STD	0.3706 % STD	0.1785 % STD
161	04/13/2017 02:55:26 PM		0.2939 % STD	0.1787 % STD	0.1061 % STD
162	04/13/2017 02:55:27 PM		0.3619 % STD	0.3004 % STD	0.2491 % STD
163	04/13/2017 02:55:28 PM		0.5225 % STD	0.3124 % STD	0.1882 % STD
164	04/13/2017 02:55:29 PM		0.6022 % STD	0.4916 % STD	0.3908 % STD
165	04/13/2017 02:55:30 PM		0.5357 % STD	0.4409 % STD	0.3202 % STD
166	04/13/2017 02:55:31 PM		0.5919 % STD	0.4710 % STD	0.3813 % STD
167	04/13/2017 02:55:32 PM		0.6595 % STD	0.4547 % STD	0.2304 % STD
168	04/13/2017 02:55:33 PM		0.7025 % STD	0.4624 % STD	0.2092 % STD
169	04/13/2017 02:55:34 PM		0.4520 % STD	0.2796 % STD	0.2160 % STD
170	04/13/2017 02:55:35 PM		0.3475 % STD	0.2144 % STD	0.1315 % STD
171	04/13/2017 02:55:36 PM		0.4483 % STD	0.3494 % STD	0.2508 % STD
172	04/13/2017 02:55:37 PM		0.3516 % STD	0.2057 % STD	0.1387 % STD
173	04/13/2017 02:55:38 PM		0.5244 % STD	0.4933 % STD	0.4428 % STD
174	04/13/2017 02:55:39 PM		0.4495 % STD	0.3179 % STD	0.1877 % STD
175	04/13/2017 02:55:40 PM		0.4631 % STD	0.3416 % STD	0.2420 % STD
176	04/13/2017 02:55:41 PM		0.4532 % STD	0.4117 % STD	0.3619 % STD
177	04/13/2017 02:55:42 PM		0.6511 % STD	0.4484 % STD	0.3336 % STD
178	04/13/2017 02:55:43 PM		0.9417 % STD	0.7303 % STD	0.4296 % STD
179	04/13/2017 02:55:44 PM		0.4368 % STD	0.3923 % STD	0.3554 % STD
180	04/13/2017 02:55:45 PM		0.9187 % STD	0.5906 % STD	0.3422 % STD
181	04/13/2017 02:55:46 PM		0.8505 % STD	0.4864 % STD	0.2884 % STD
182	04/13/2017 02:55:47 PM		0.7532 % STD	0.5618 % STD	0.3499 % STD
183	04/13/2017 02:55:48 PM		0.7194 % STD	0.5341 % STD	0.3493 % STD
184	04/13/2017 02:55:49 PM		0.8450 % STD	0.6804 % STD	0.3959 % STD
185	04/13/2017 02:55:50 PM		1.716 % STD	1.153 % STD	0.8692 % STD
186	04/13/2017 02:55:51 PM		2.033 % STD	1.706 % STD	1.000 % STD
187	04/13/2017 02:55:52 PM		0.7490 % STD	0.6100 % STD	0.5468 % STD
188	04/13/2017 02:55:53 PM		0.6209 % STD	0.5259 % STD	0.4157 % STD
189	04/13/2017 02:55:54 PM		3.169 % STD	1.740 % STD	0.6717 % STD
190	04/13/2017 02:55:55 PM		5.555 % STD	4.997 % STD	4.076 % STD
191	04/13/2017 02:55:56 PM		3.244 % STD	1.771 % STD	0.8396 % STD
192	04/13/2017 02:55:57 PM		6.026 % STD	3.691 % STD	1.172 % STD
193	04/13/2017 02:55:58 PM		4.892 % STD	2.615 % STD	1.455 % STD
194	04/13/2017 02:55:59 PM		5.888 % STD	4.064 % STD	2.372 % STD
195	04/13/2017 02:56:00 PM		7.926 % STD	5.015 % STD	2.979 % STD
196	04/13/2017 02:56:01 PM		11.51 % STD	10.08 % STD	8.405 % STD
197	04/13/2017 02:56:02 PM		5.023 % STD	2.769 % STD	1.709 % STD
198	04/13/2017 02:56:03 PM		22.19 % STD	9.865 % STD	2.920 % STD

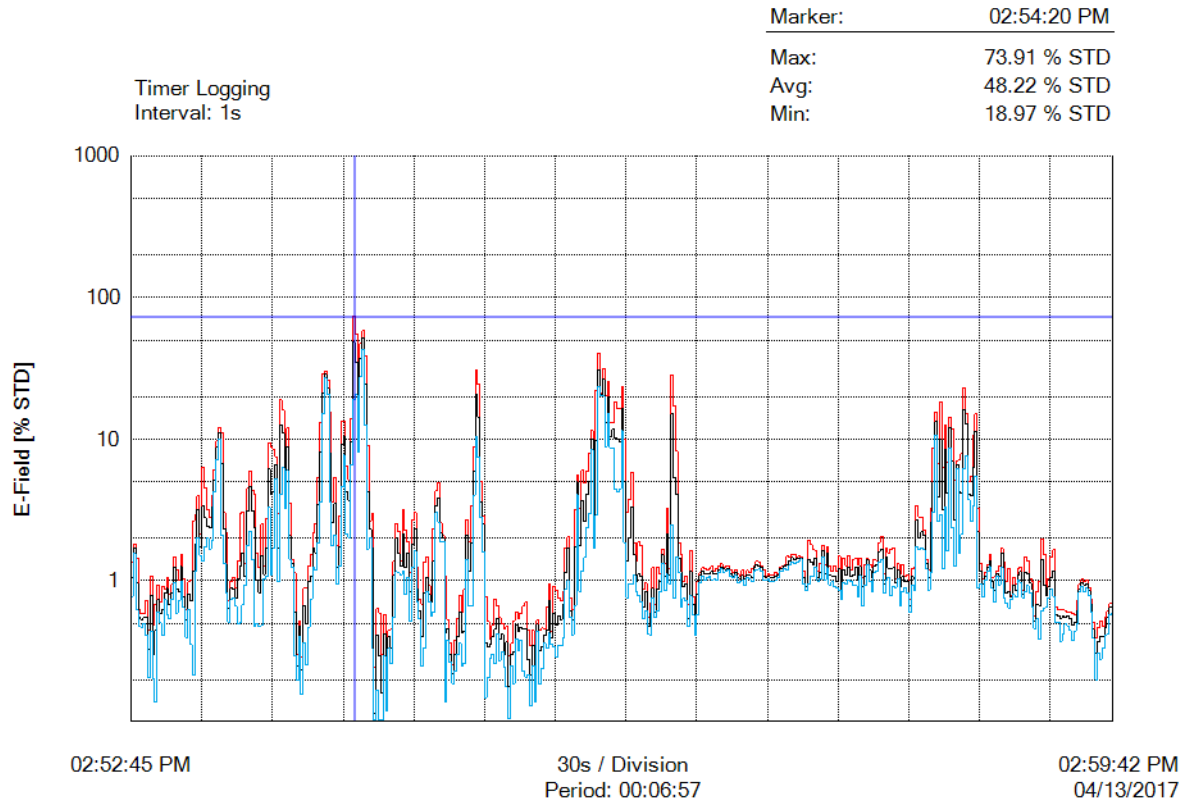
Index	Date/Time	Zero	Max (E-Field)	Avg (E-Field)	Min (E-Field)
199	04/13/2017 02:56:04 PM		40.33 % STD	30.77 % STD	23.49 % STD
200	04/13/2017 02:56:05 PM		21.08 % STD	20.70 % STD	20.27 % STD
201	04/13/2017 02:56:06 PM		31.56 % STD	26.36 % STD	20.17 % STD
202	04/13/2017 02:56:07 PM		20.18 % STD	13.20 % STD	8.909 % STD
203	04/13/2017 02:56:08 PM		25.53 % STD	20.03 % STD	15.19 % STD
204	04/13/2017 02:56:09 PM		13.17 % STD	10.49 % STD	8.721 % STD
205	04/13/2017 02:56:10 PM		13.20 % STD	11.76 % STD	8.659 % STD
206	04/13/2017 02:56:11 PM		18.44 % STD	10.25 % STD	4.453 % STD
207	04/13/2017 02:56:12 PM		16.50 % STD	10.08 % STD	4.257 % STD
208	04/13/2017 02:56:13 PM		16.34 % STD	9.586 % STD	4.460 % STD
209	04/13/2017 02:56:14 PM		23.65 % STD	16.55 % STD	11.47 % STD
210	04/13/2017 02:56:15 PM		10.07 % STD	5.068 % STD	1.864 % STD
211	04/13/2017 02:56:16 PM		3.057 % STD	1.368 % STD	0.7587 % STD
212	04/13/2017 02:56:17 PM		3.779 % STD	2.022 % STD	0.9497 % STD
213	04/13/2017 02:56:18 PM		5.846 % STD	3.314 % STD	0.9551 % STD
214	04/13/2017 02:56:19 PM		1.867 % STD	1.518 % STD	1.095 % STD
215	04/13/2017 02:56:20 PM		1.393 % STD	0.9981 % STD	0.8440 % STD
216	04/13/2017 02:56:21 PM		1.888 % STD	1.115 % STD	0.7862 % STD
217	04/13/2017 02:56:22 PM		1.772 % STD	1.075 % STD	0.7099 % STD
218	04/13/2017 02:56:23 PM		0.8725 % STD	0.6504 % STD	0.5393 % STD
219	04/13/2017 02:56:24 PM		0.9605 % STD	0.8447 % STD	0.6121 % STD
220	04/13/2017 02:56:25 PM		0.5496 % STD	0.4737 % STD	0.4198 % STD
221	04/13/2017 02:56:26 PM		0.7015 % STD	0.5903 % STD	0.4090 % STD
222	04/13/2017 02:56:27 PM		1.234 % STD	0.8903 % STD	0.7565 % STD
223	04/13/2017 02:56:28 PM		0.6847 % STD	0.5980 % STD	0.5477 % STD
224	04/13/2017 02:56:29 PM		1.256 % STD	0.8802 % STD	0.6187 % STD
225	04/13/2017 02:56:30 PM		1.115 % STD	0.9958 % STD	0.8355 % STD
226	04/13/2017 02:56:31 PM		1.674 % STD	1.519 % STD	1.323 % STD
227	04/13/2017 02:56:32 PM		1.313 % STD	1.087 % STD	0.8536 % STD
228	04/13/2017 02:56:33 PM		3.258 % STD	2.143 % STD	1.112 % STD
229	04/13/2017 02:56:34 PM		1.208 % STD	1.089 % STD	0.9544 % STD
230	04/13/2017 02:56:35 PM		28.30 % STD	15.07 % STD	2.501 % STD
231	04/13/2017 02:56:36 PM		17.30 % STD	5.399 % STD	0.7587 % STD
232	04/13/2017 02:56:37 PM		8.207 % STD	4.124 % STD	1.475 % STD
233	04/13/2017 02:56:38 PM		1.859 % STD	1.442 % STD	1.140 % STD
234	04/13/2017 02:56:39 PM		1.536 % STD	1.159 % STD	0.6464 % STD
235	04/13/2017 02:56:40 PM		0.9913 % STD	0.9025 % STD	0.7545 % STD
236	04/13/2017 02:56:41 PM		1.087 % STD	0.9508 % STD	0.7219 % STD
237	04/13/2017 02:56:42 PM		0.6815 % STD	0.5463 % STD	0.4783 % STD
238	04/13/2017 02:56:43 PM		1.629 % STD	1.161 % STD	0.7800 % STD
239	04/13/2017 02:56:44 PM		0.7775 % STD	0.6831 % STD	0.5699 % STD
240	04/13/2017 02:56:45 PM		0.5752 % STD	0.4993 % STD	0.4129 % STD
241	04/13/2017 02:56:46 PM		0.9864 % STD	0.8078 % STD	0.5782 % STD
242	04/13/2017 02:56:47 PM		1.141 % STD	1.088 % STD	0.9786 % STD
243	04/13/2017 02:56:48 PM		1.235 % STD	1.176 % STD	1.082 % STD
244	04/13/2017 02:56:49 PM		1.223 % STD	1.119 % STD	1.013 % STD
245	04/13/2017 02:56:50 PM		1.183 % STD	1.117 % STD	1.044 % STD
246	04/13/2017 02:56:51 PM		1.230 % STD	1.133 % STD	1.072 % STD
247	04/13/2017 02:56:52 PM		1.260 % STD	1.166 % STD	1.020 % STD
248	04/13/2017 02:56:53 PM		1.179 % STD	1.113 % STD	1.023 % STD
249	04/13/2017 02:56:54 PM		1.213 % STD	1.114 % STD	1.014 % STD
250	04/13/2017 02:56:55 PM		1.267 % STD	1.205 % STD	1.135 % STD
251	04/13/2017 02:56:56 PM		1.312 % STD	1.255 % STD	1.213 % STD
252	04/13/2017 02:56:57 PM		1.238 % STD	1.210 % STD	1.155 % STD
253	04/13/2017 02:56:58 PM		1.259 % STD	1.192 % STD	1.160 % STD
254	04/13/2017 02:56:59 PM		1.261 % STD	1.230 % STD	1.203 % STD

Index	Date/Time	Zero	Max (E-Field)	Avg (E-Field)	Min (E-Field)
255	04/13/2017 02:57:00 PM		1.182 % STD	1.122 % STD	1.072 % STD
256	04/13/2017 02:57:01 PM		1.134 % STD	1.084 % STD	1.047 % STD
257	04/13/2017 02:57:02 PM		1.200 % STD	1.146 % STD	1.092 % STD
258	04/13/2017 02:57:03 PM		1.118 % STD	1.048 % STD	0.9628 % STD
259	04/13/2017 02:57:04 PM		1.075 % STD	1.038 % STD	0.9943 % STD
260	04/13/2017 02:57:05 PM		1.186 % STD	1.088 % STD	1.003 % STD
261	04/13/2017 02:57:06 PM		1.065 % STD	1.025 % STD	0.9284 % STD
262	04/13/2017 02:57:07 PM		1.182 % STD	1.103 % STD	1.047 % STD
263	04/13/2017 02:57:08 PM		1.151 % STD	1.093 % STD	1.022 % STD
264	04/13/2017 02:57:09 PM		1.218 % STD	1.062 % STD	0.9840 % STD
265	04/13/2017 02:57:10 PM		1.276 % STD	1.241 % STD	1.181 % STD
266	04/13/2017 02:57:11 PM		1.370 % STD	1.298 % STD	1.203 % STD
267	04/13/2017 02:57:12 PM		1.365 % STD	1.265 % STD	1.214 % STD
268	04/13/2017 02:57:13 PM		1.278 % STD	1.238 % STD	1.174 % STD
269	04/13/2017 02:57:14 PM		1.196 % STD	1.073 % STD	1.021 % STD
270	04/13/2017 02:57:15 PM		1.082 % STD	1.063 % STD	1.010 % STD
271	04/13/2017 02:57:16 PM		1.118 % STD	1.080 % STD	1.032 % STD
272	04/13/2017 02:57:17 PM		1.099 % STD	1.056 % STD	0.9866 % STD
273	04/13/2017 02:57:18 PM		1.107 % STD	1.048 % STD	0.9913 % STD
274	04/13/2017 02:57:19 PM		1.153 % STD	1.081 % STD	1.003 % STD
275	04/13/2017 02:57:20 PM		1.126 % STD	1.091 % STD	1.056 % STD
276	04/13/2017 02:57:21 PM		1.256 % STD	1.209 % STD	1.171 % STD
277	04/13/2017 02:57:22 PM		1.270 % STD	1.217 % STD	1.171 % STD
278	04/13/2017 02:57:23 PM		1.294 % STD	1.275 % STD	1.229 % STD
279	04/13/2017 02:57:24 PM		1.491 % STD	1.305 % STD	1.197 % STD
280	04/13/2017 02:57:25 PM		1.472 % STD	1.383 % STD	1.287 % STD
281	04/13/2017 02:57:26 PM		1.538 % STD	1.456 % STD	1.354 % STD
282	04/13/2017 02:57:27 PM		1.540 % STD	1.409 % STD	1.319 % STD
283	04/13/2017 02:57:28 PM		1.478 % STD	1.433 % STD	1.340 % STD
284	04/13/2017 02:57:29 PM		1.516 % STD	1.447 % STD	1.389 % STD
285	04/13/2017 02:57:30 PM		1.473 % STD	1.454 % STD	1.433 % STD
286	04/13/2017 02:57:31 PM		1.158 % STD	1.059 % STD	0.9487 % STD
287	04/13/2017 02:57:32 PM		0.9180 % STD	0.9037 % STD	0.8606 % STD
288	04/13/2017 02:57:33 PM		1.934 % STD	1.424 % STD	0.9403 % STD
289	04/13/2017 02:57:34 PM		1.803 % STD	1.356 % STD	1.067 % STD
290	04/13/2017 02:57:35 PM		1.665 % STD	1.287 % STD	1.081 % STD
291	04/13/2017 02:57:36 PM		1.634 % STD	1.454 % STD	1.257 % STD
292	04/13/2017 02:57:37 PM		1.170 % STD	1.051 % STD	0.9976 % STD
293	04/13/2017 02:57:38 PM		1.334 % STD	1.156 % STD	1.039 % STD
294	04/13/2017 02:57:39 PM		1.767 % STD	1.624 % STD	1.468 % STD
295	04/13/2017 02:57:40 PM		1.287 % STD	1.116 % STD	1.016 % STD
296	04/13/2017 02:57:41 PM		1.742 % STD	1.574 % STD	1.243 % STD
297	04/13/2017 02:57:42 PM		1.275 % STD	1.093 % STD	0.9355 % STD
298	04/13/2017 02:57:43 PM		1.169 % STD	1.084 % STD	0.9819 % STD
299	04/13/2017 02:57:44 PM		1.265 % STD	1.067 % STD	0.9130 % STD
300	04/13/2017 02:57:45 PM		1.173 % STD	0.9934 % STD	0.8885 % STD
301	04/13/2017 02:57:46 PM		1.493 % STD	1.211 % STD	0.8637 % STD
302	04/13/2017 02:57:47 PM		0.9324 % STD	0.8528 % STD	0.7440 % STD
303	04/13/2017 02:57:48 PM		1.447 % STD	1.198 % STD	0.9745 % STD
304	04/13/2017 02:57:49 PM		1.283 % STD	1.101 % STD	0.9419 % STD
305	04/13/2017 02:57:50 PM		1.510 % STD	1.246 % STD	1.020 % STD
306	04/13/2017 02:57:51 PM		1.188 % STD	1.071 % STD	0.9854 % STD
307	04/13/2017 02:57:52 PM		1.421 % STD	1.095 % STD	0.9312 % STD
308	04/13/2017 02:57:53 PM		1.455 % STD	1.257 % STD	0.9249 % STD
309	04/13/2017 02:57:54 PM		1.307 % STD	1.005 % STD	0.7662 % STD
310	04/13/2017 02:57:55 PM		1.441 % STD	1.265 % STD	1.088 % STD

Index	Date/Time	Zero	Max (E-Field)	Avg (E-Field)	Min (E-Field)
311	04/13/2017 02:57:56 PM		1.043 % STD	0.9034 % STD	0.6690 % STD
312	04/13/2017 02:57:57 PM		1.289 % STD	1.083 % STD	0.9226 % STD
313	04/13/2017 02:57:58 PM		1.431 % STD	1.397 % STD	1.304 % STD
314	04/13/2017 02:57:59 PM		1.308 % STD	1.184 % STD	0.9944 % STD
315	04/13/2017 02:58:00 PM		1.250 % STD	1.056 % STD	0.8429 % STD
316	04/13/2017 02:58:01 PM		1.414 % STD	1.266 % STD	1.144 % STD
317	04/13/2017 02:58:02 PM		1.394 % STD	1.301 % STD	1.168 % STD
318	04/13/2017 02:58:03 PM		1.866 % STD	1.613 % STD	1.358 % STD
319	04/13/2017 02:58:04 PM		2.045 % STD	1.675 % STD	1.406 % STD
320	04/13/2017 02:58:05 PM		1.130 % STD	0.9440 % STD	0.8217 % STD
321	04/13/2017 02:58:06 PM		1.688 % STD	1.480 % STD	1.008 % STD
322	04/13/2017 02:58:07 PM		1.574 % STD	1.226 % STD	1.062 % STD
323	04/13/2017 02:58:08 PM		1.673 % STD	1.225 % STD	0.7861 % STD
324	04/13/2017 02:58:09 PM		1.697 % STD	1.233 % STD	0.9055 % STD
325	04/13/2017 02:58:10 PM		1.029 % STD	0.9682 % STD	0.9003 % STD
326	04/13/2017 02:58:11 PM		1.312 % STD	1.186 % STD	1.035 % STD
327	04/13/2017 02:58:12 PM		1.125 % STD	0.9087 % STD	0.6624 % STD
328	04/13/2017 02:58:13 PM		1.308 % STD	1.073 % STD	0.8394 % STD
329	04/13/2017 02:58:14 PM		1.086 % STD	0.9934 % STD	0.8959 % STD
330	04/13/2017 02:58:15 PM		1.104 % STD	0.9830 % STD	0.8205 % STD
331	04/13/2017 02:58:16 PM		0.7462 % STD	0.6594 % STD	0.6014 % STD
332	04/13/2017 02:58:17 PM		1.207 % STD	1.068 % STD	0.9323 % STD
333	04/13/2017 02:58:18 PM		1.257 % STD	1.027 % STD	0.8586 % STD
334	04/13/2017 02:58:19 PM		3.401 % STD	2.686 % STD	1.752 % STD
335	04/13/2017 02:58:20 PM		2.830 % STD	2.029 % STD	1.658 % STD
336	04/13/2017 02:58:21 PM		2.808 % STD	2.208 % STD	1.698 % STD
337	04/13/2017 02:58:22 PM		2.293 % STD	2.094 % STD	1.651 % STD
338	04/13/2017 02:58:23 PM		1.417 % STD	1.321 % STD	1.210 % STD
339	04/13/2017 02:58:24 PM		1.192 % STD	1.051 % STD	0.8579 % STD
340	04/13/2017 02:58:25 PM		3.226 % STD	2.570 % STD	1.145 % STD
341	04/13/2017 02:58:26 PM		8.691 % STD	4.986 % STD	3.080 % STD
342	04/13/2017 02:58:27 PM		15.47 % STD	13.33 % STD	10.65 % STD
343	04/13/2017 02:58:28 PM		6.703 % STD	3.940 % STD	2.641 % STD
344	04/13/2017 02:58:29 PM		18.42 % STD	9.904 % STD	2.937 % STD
345	04/13/2017 02:58:30 PM		6.321 % STD	3.181 % STD	1.209 % STD
346	04/13/2017 02:58:31 PM		12.61 % STD	8.471 % STD	3.331 % STD
347	04/13/2017 02:58:32 PM		6.918 % STD	4.157 % STD	1.632 % STD
348	04/13/2017 02:58:33 PM		14.38 % STD	12.02 % STD	8.668 % STD
349	04/13/2017 02:58:34 PM		11.92 % STD	6.960 % STD	2.381 % STD
350	04/13/2017 02:58:35 PM		5.179 % STD	2.701 % STD	1.272 % STD
351	04/13/2017 02:58:36 PM		7.042 % STD	6.647 % STD	6.232 % STD
352	04/13/2017 02:58:37 PM		7.144 % STD	4.255 % STD	1.563 % STD
353	04/13/2017 02:58:38 PM		7.902 % STD	4.125 % STD	2.126 % STD
354	04/13/2017 02:58:39 PM		23.01 % STD	16.26 % STD	6.222 % STD
355	04/13/2017 02:58:40 PM		15.27 % STD	12.83 % STD	7.642 % STD
356	04/13/2017 02:58:41 PM		4.994 % STD	4.116 % STD	3.717 % STD
357	04/13/2017 02:58:42 PM		5.506 % STD	3.989 % STD	2.616 % STD
358	04/13/2017 02:58:43 PM		10.76 % STD	6.268 % STD	3.374 % STD
359	04/13/2017 02:58:44 PM		15.16 % STD	11.36 % STD	5.477 % STD
360	04/13/2017 02:58:45 PM		3.266 % STD	2.216 % STD	0.8923 % STD
361	04/13/2017 02:58:46 PM		1.336 % STD	1.168 % STD	0.9460 % STD
362	04/13/2017 02:58:47 PM		1.024 % STD	0.9429 % STD	0.7655 % STD
363	04/13/2017 02:58:48 PM		1.153 % STD	1.080 % STD	1.013 % STD
364	04/13/2017 02:58:49 PM		1.295 % STD	1.243 % STD	1.159 % STD
365	04/13/2017 02:58:50 PM		1.521 % STD	1.383 % STD	1.258 % STD
366	04/13/2017 02:58:51 PM		1.052 % STD	0.9801 % STD	0.8844 % STD

Index	Date/Time	Zero	Max (E-Field)	Avg (E-Field)	Min (E-Field)
367	04/13/2017 02:58:52 PM		1.070 % STD	0.8536 % STD	0.7032 % STD
368	04/13/2017 02:58:53 PM		1.173 % STD	1.131 % STD	1.087 % STD
369	04/13/2017 02:58:54 PM		1.275 % STD	1.079 % STD	0.9345 % STD
370	04/13/2017 02:58:55 PM		1.686 % STD	1.574 % STD	1.238 % STD
371	04/13/2017 02:58:56 PM		1.341 % STD	1.015 % STD	0.7481 % STD
372	04/13/2017 02:58:57 PM		0.9907 % STD	0.8182 % STD	0.6882 % STD
373	04/13/2017 02:58:58 PM		1.228 % STD	0.8358 % STD	0.6436 % STD
374	04/13/2017 02:58:59 PM		0.7946 % STD	0.7669 % STD	0.7439 % STD
375	04/13/2017 02:59:00 PM		1.051 % STD	0.9352 % STD	0.7963 % STD
376	04/13/2017 02:59:01 PM		0.9418 % STD	0.8544 % STD	0.7715 % STD
377	04/13/2017 02:59:02 PM		1.207 % STD	1.096 % STD	1.000 % STD
378	04/13/2017 02:59:03 PM		1.247 % STD	1.157 % STD	0.9726 % STD
379	04/13/2017 02:59:04 PM		0.8489 % STD	0.7963 % STD	0.7618 % STD
380	04/13/2017 02:59:05 PM		1.476 % STD	1.152 % STD	0.8428 % STD
381	04/13/2017 02:59:06 PM		1.389 % STD	1.121 % STD	0.9236 % STD
382	04/13/2017 02:59:07 PM		1.037 % STD	0.9668 % STD	0.8283 % STD
383	04/13/2017 02:59:08 PM		0.9998 % STD	0.8693 % STD	0.6581 % STD
384	04/13/2017 02:59:09 PM		0.5580 % STD	0.5209 % STD	0.4619 % STD
385	04/13/2017 02:59:10 PM		0.8452 % STD	0.6792 % STD	0.5388 % STD
386	04/13/2017 02:59:11 PM		0.9950 % STD	0.6716 % STD	0.3871 % STD
387	04/13/2017 02:59:12 PM		1.959 % STD	1.425 % STD	0.6090 % STD
388	04/13/2017 02:59:13 PM		1.532 % STD	0.9387 % STD	0.6447 % STD
389	04/13/2017 02:59:14 PM		0.9047 % STD	0.7938 % STD	0.6562 % STD
390	04/13/2017 02:59:15 PM		1.035 % STD	0.9022 % STD	0.7557 % STD
391	04/13/2017 02:59:16 PM		1.483 % STD	1.060 % STD	0.8650 % STD
392	04/13/2017 02:59:17 PM		1.655 % STD	1.166 % STD	0.7763 % STD
393	04/13/2017 02:59:18 PM		0.6509 % STD	0.5730 % STD	0.5096 % STD
394	04/13/2017 02:59:19 PM		0.6220 % STD	0.5620 % STD	0.5077 % STD
395	04/13/2017 02:59:20 PM		0.6213 % STD	0.5420 % STD	0.3749 % STD
396	04/13/2017 02:59:21 PM		0.6316 % STD	0.5649 % STD	0.4250 % STD
397	04/13/2017 02:59:22 PM		0.6183 % STD	0.5480 % STD	0.4927 % STD
398	04/13/2017 02:59:23 PM		0.6027 % STD	0.5649 % STD	0.4806 % STD
399	04/13/2017 02:59:24 PM		0.5959 % STD	0.5401 % STD	0.4443 % STD
400	04/13/2017 02:59:25 PM		0.5887 % STD	0.4829 % STD	0.3779 % STD
401	04/13/2017 02:59:26 PM		0.5803 % STD	0.5053 % STD	0.4413 % STD
402	04/13/2017 02:59:27 PM		0.7304 % STD	0.6079 % STD	0.5023 % STD
403	04/13/2017 02:59:28 PM		0.9405 % STD	0.8727 % STD	0.8311 % STD
404	04/13/2017 02:59:29 PM		1.021 % STD	0.9770 % STD	0.9115 % STD
405	04/13/2017 02:59:30 PM		0.9925 % STD	0.9380 % STD	0.8372 % STD
406	04/13/2017 02:59:31 PM		1.015 % STD	0.9519 % STD	0.8843 % STD
407	04/13/2017 02:59:32 PM		0.8958 % STD	0.8511 % STD	0.7876 % STD
408	04/13/2017 02:59:33 PM		0.7333 % STD	0.6812 % STD	0.6031 % STD
409	04/13/2017 02:59:34 PM		0.5096 % STD	0.4547 % STD	0.3923 % STD
410	04/13/2017 02:59:35 PM		0.3937 % STD	0.3098 % STD	0.1999 % STD
411	04/13/2017 02:59:36 PM		0.4674 % STD	0.3704 % STD	0.3074 % STD
412	04/13/2017 02:59:37 PM		0.5187 % STD	0.4007 % STD	0.2802 % STD
413	04/13/2017 02:59:38 PM		0.4783 % STD	0.4028 % STD	0.3327 % STD
414	04/13/2017 02:59:39 PM		0.5532 % STD	0.4688 % STD	0.4124 % STD
415	04/13/2017 02:59:40 PM		0.6073 % STD	0.5498 % STD	0.4172 % STD
416	04/13/2017 02:59:41 PM		0.6906 % STD	0.6482 % STD	0.5770 % STD
417	04/13/2017 02:59:42 PM		0.7040 % STD	0.6524 % STD	0.5905 % STD

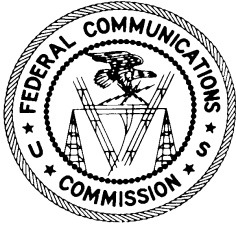
Graph



Parameters

Number of Sub Indices	417
Storing Date	04/13/2017
Storing Time	02:52:45 PM
Dataset Type	TIM
Voice Comment Available	NO
Dataset Fine Type	T1
GPS Flag	DIFF
Device Product Name	NBM-550
Device Serial Number	B-0054
Device Cal Due Date	02/06/2019
Probe Product Name	EA5091
Probe Serial Number	01053
Probe Cal Due Date	02/03/2019
Probe Field Type	E
Probe Connection Type	C
Probe Lower Frequency Limit A	300 kHz
Probe Upper Frequency Limit A	50 GHz
Probe Lower Frequency Limit B	300 kHz
Probe Upper Frequency Limit B	50 GHz
Probe Emin A	4.340 V/m
Probe Emax A	150.0 V/m
Probe Emin B	4.340 V/m
Probe Emax B	150.0 V/m
Shaped Probe	YES
Standard ID	1
Standard Name	FCC96-326,occ
Apply Standard	ON
Frequency	100 MHz
Apply Correction Frequency	OFF
Eref_E(f)	61.40 V/m
Eref_H(f)	61.45 V/m
Combi Probe Use	E_H
Unit	mW/cm ²
Results Format	VARIABLE
Auto-Zero Interval	OFF
Result Type	-
Averaging Time	-
Average Progress	-
Spatial AVG Mode	-
Store Condition	-
Storing Range	-
Cond. Stop Time	-
Upper Threshold	-
Lower Threshold	-
Timer Interval	1 sec
Timer Duration	02:00:00
History Time Scale	-
Time progress of current segment	-

Exhibit B – W250BD Construction Permit



United States of America
FEDERAL COMMUNICATIONS COMMISSION
FM BROADCAST TRANSLATOR/BOOSTER STATION
CONSTRUCTION PERMIT

Authorizing Official:

Official Mailing Address:

EDUCATIONAL MEDIA FOUNDATION
5700 WEST OAKS BLVD.
ROCKLIN CA 95765

James D. Bradshaw
Deputy Chief
Audio Division
Media Bureau

Facility Id: 141367

Call Sign: W250BD

Permit File Number: BMPFT-20170208AHU

Grant Date: February 24, 2017

The authority granted herein has no effect on the expiration date of the underlying construction permit.

This permit modifies permit no.: BMPFT-20160524AAL

Commission rules which became effective on February 16, 1999, have a bearing on this construction permit. See Report & Order, Streamlining of Mass Media Applications, MM Docket No. 98-43, 13 FCC RCD 23056, Para. 77-90 (November 25, 1998); 63 Fed. Reg. 70039 (December 18, 1998). Pursuant to these rules, this construction permit will be subject to automatic forfeiture unless construction is complete and an application for license to cover is filed prior to expiration. See Section 73.3598.

Name of Permittee: EDUCATIONAL MEDIA FOUNDATION

Principal community to be served: KY-LOUISVILLE

Primary Station: WLGX (FM) , Channel 263, LOUISVILLE, KY

Via: W236AN

Frequency (MHz): 97.9

Channel: 250

Hours of Operation: Unlimited

Antenna Coordinates: North Latitude: 38 deg 14 min 45 sec
 West Longitude: 85 deg 45 min 30 sec

Transmitter: Type Accepted. See Sections 73.1660, 74.1250 of the Commission's Rules

Antenna type: (directional or non-directional): Directional

Major lobe directions 130
 (degrees true):

Horizontally	Vertically
Polarized	Polarized
Antenna:	Antenna:

Effective radiated power in the Horizontal Plane (kw):	0.25
Height of radiation center above ground (Meters):	77
Height of radiation center above mean sea level (Meters):	216

Antenna structure registration number: 1052197

Overall height of antenna structure above ground (including obstruction lighting if any) see the registration for this antenna structure.

Special operating conditions or restrictions:

- 1 The permittee/licensee in coordination with other users of the site must reduce power or cease operation as necessary to protect persons having access to the site, tower or antenna from radiofrequency electromagnetic fields in excess of FCC guidelines.
- 2 Prior to commencing program test operations, FM Translator or FM Booster permittee must have on file at the Commission, FCC Form 350, Application for an FM Translator or FM Booster Station License, pursuant to 47 C.F.R. Section 74.14.
- 3 The applicant proposes to rebroadcast the HD Channel 2 of the above primary station.

Special operating conditions or restrictions:

- 4 Warning signs which describe the radiofrequency electromagnetic field radiation hazard must be posted at appropriate intervals. Access must be restricted to prevent the exposure of humans to RF emissions in excess of the FCC guidelines (OET Bulletin 65, Edition 97-01, released August 1997). Permittee shall submit documentation of compliance with this special operating condition when filing FCC Form 350, application for license.

*** END OF AUTHORIZATION ***