
FM DIRECTIONAL BROADCAST ANTENNA
PROOF-OF-PERFORMANCE

MODEL JMPC-1-57.5/42.5-R-DA

SERIAL NUMBER 12647

WKKC

Chicago, IL



6340 Sky Creek Drive • Sacramento, California USA 95828
(916) 383-1177 phone • (916) 383-1182 fax



6340 Sky Creek Drive, Sacramento, California 95828
P.O. Box 292880, Sacramento, California 95829-2880

(916) 383-1177 FAX (916) 383-1182

TABLE OF CONTENTS

A.	Engineer's Statement	1,2
B.	Mechanical Drawings	3,4
C.	Composite Azimuth Pattern, Plot	5
D.	Composite Azimuth Pattern, Tabulation	6
E.	Azimuth Pattern, Horizontal & Vertical Polarizations, Plot	7
F.	Azimuth Pattern, Horizontal & Vertical Polarizations, Tabulation	8
G.	Elevation Plane Pattern, Plot	9
H.	Elevation Plane Pattern, Tabulation	10



6340 Sky Creek Drive, Sacramento, California 95828
P.O. Box 292880, Sacramento, California 95829-2880

(916) 383-1177 FAX (916) 383-1182

DATE: April 4, 2006

ANTENNA GAIN	H-pol	V-pol
relative	1.61	1.20
(dBd)	(2.07)	(0.81)

**RMS OF THE
AZIMUTH PATTERNS:**

FM ANTENNA FOR:

STATION: WKKC

LOCATION: Chicago, IL

MODEL NUMBER: JMPC-1-57.5/42.5-R-DA

FREQUENCY & ERP: 89.3 MHz, 0.25 kW

ANTENNA INPUT POWER: 0.16 kW

ANTENNA BOOM HEADING: 180° T.

Composite	H-pol	V-pol
0.637	0.558	0.592

CERTIFICATION

This certification, along with the accompanying antenna specification sheet, antenna mounting sketches, and azimuth and elevation patterns, certifies the construction and measurement of the *JAMPRO* FM CP antenna to the station's requirements, as measured at the *JAMPRO* antenna site in Sacramento, California. The following is an outline of construction methods, pattern measurements, installation requirements, recommended maintenance and equipment used.

CONSTRUCTION

A modified CP FM antenna model was used (to accommodate the unequal hpol/vpol gain requirements) and parasitic reflectors were added to create the required directional patterns. From experience and by repeated measurements, these elements were adjusted as to position until the final configuration was determined and the pattern requirements were met. These additional elements are steel, hot dipped galvanized and either bolted or welded in place. Measurements to establish their exact location are shown on the antenna mounting sketches.

MEASUREMENT

The full scale antenna was mounted on an exact duplicate of its final support at the station.

We were careful to duplicate conduits, cables and anything peculiar to this mounting. This was then placed on a turntable at the *JAMPRO* antenna range. This directional antenna was used for receiving the radiation from a transmitting antenna that is elevated 25 feet above ground and located at a distance of 4,500 feet. This transmitting antenna is capable of transmitting either horizontal or vertical polarization. The frequency of the signal generator was accurately set to station frequency by use of a frequency counter. A spectrum analyzer was used to continuously measure field strength as the antenna under test was rotated. Field strength at each azimuth was then plotted.



6340 Sky Creek Drive, Sacramento, California 95828
P.O. Box 292880, Sacramento, California 95829-2880

(916) 383-1177 FAX (916) 383-1182

Station: **WKKC**

Model: **JMPC-1-57.5/42.5-R-DA**

INSTALLATION

The antenna must be installed in exactly the manner in which it was measured at the factory. This is shown in detail on the antenna mounting sketch, including the azimuth bearing of the elements. This boom must be verified by a surveyor at the site when installation is being completed. Good engineering practices should be followed in any details not covered by specific instructions.

MAINTENANCE

Annual or regular inspection should be made on the antenna system. At this time, tightness of U-bolts, or other fastenings, should be routinely checked. Any deterioration of the antenna due to lightning, or other causes should be promptly repaired.

EQUIPMENT

MODEL: -3000 WAVETEK SIGNAL GENERATOR, SERIAL #66479
-8591E H.P. SPECTRUM ANALYZER, SERIAL #3308A01312, CAL'd 1/16/03
-TUNED CAVITY DIPOLE

CONCLUSION

In the development of this pattern, JAMPRO antennas, Inc. observed known requirements of the FCC, as stated on the station construction permit. **However, It was not possible to achieve a pattern that fits within the presently authorized radiation limits. A change in its present authorization would be required in order to use and license this antenna at WKKC.**

Gain figures and required input power to achieve currently authorized station ERP, as well as other details, are found on the first page.

This certification, with its calculations were performed by J. Dane Jubera, B.S.E.E., Electrical Engineer, JAMPRO Antennas, Inc.

EXECUTED THIS 4th DAY OF April, 2006

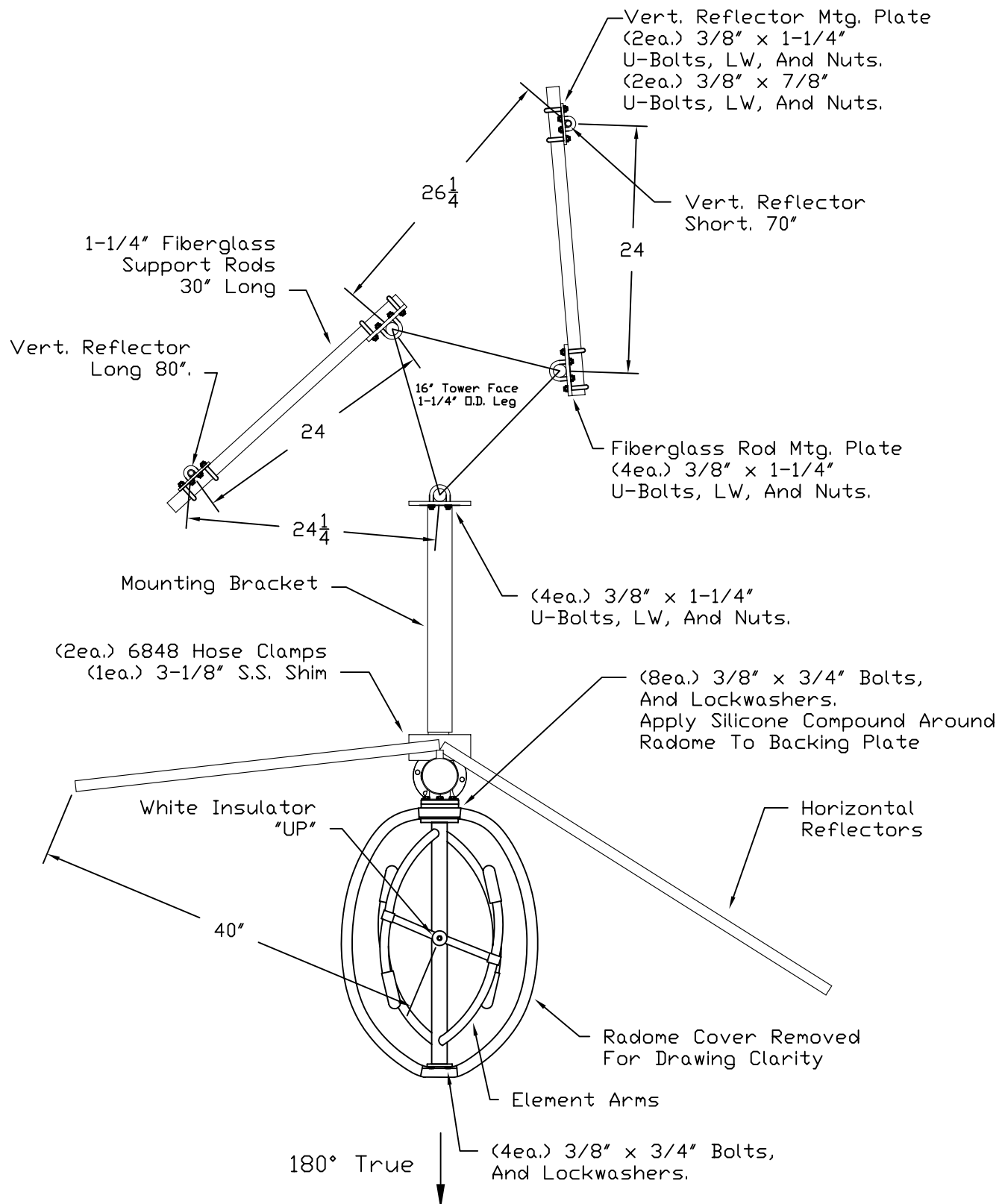
BY: J. Dane Jubera

J. Dane Jubera, B.S.E.E. JAMPRO Antennas, Inc.

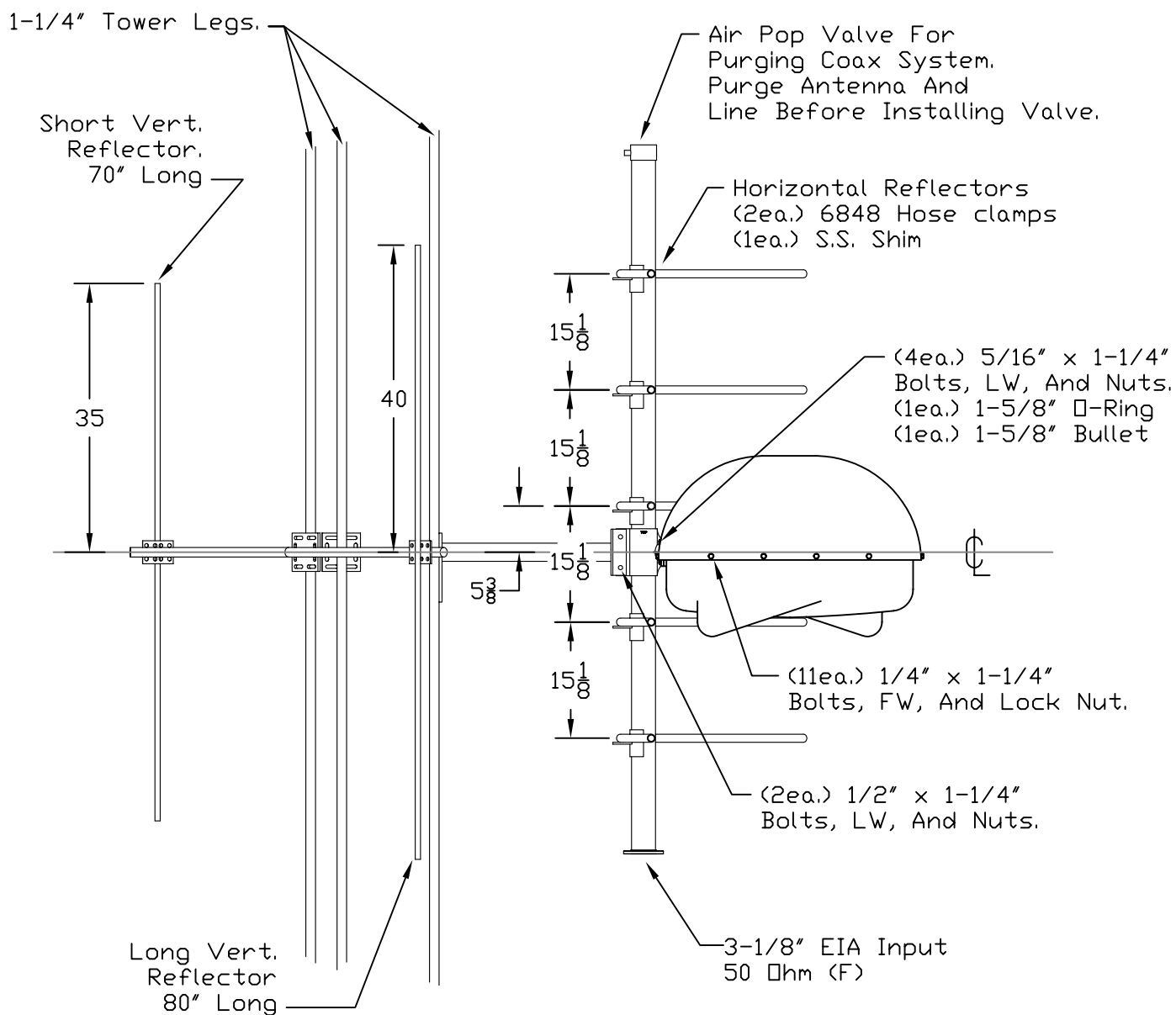
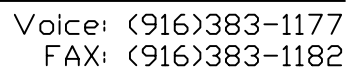


6340 Sky Creek Drive, Sacramento, California 95828
P.O. Box 292880, Sacramento, California 95829-2880

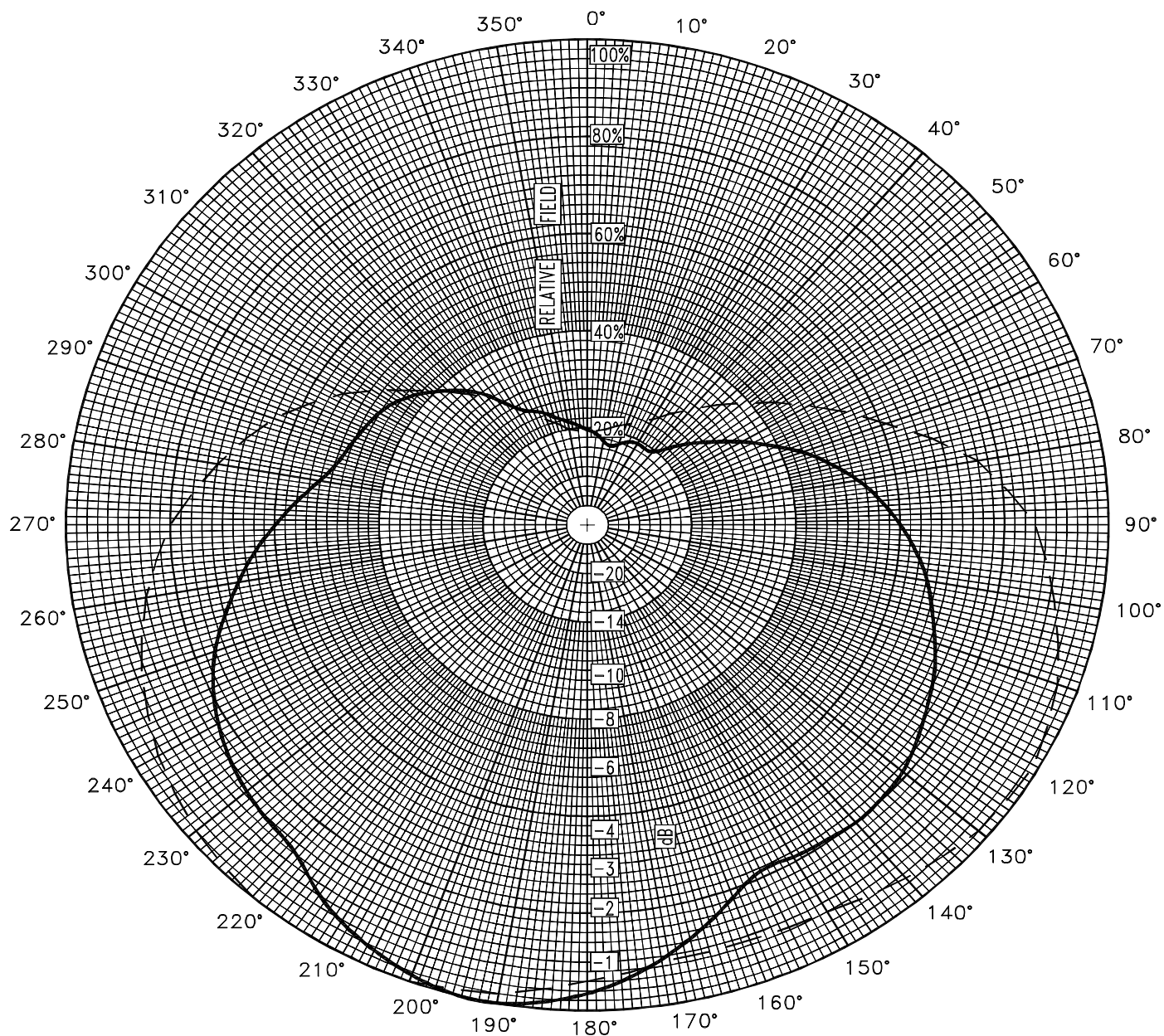
Voice: (916)383-1177
FAX: (916)383-1182



TITLE: 12647 TOP	JOB NO. 12647	ANTENNA MODEL: JMPC-1-R-DA	FREQ: 89.3 MHz	REV: 0
	DATE: 3/28/06	CUSTOMER:	CALL SIGN: WKKC	SHEET: 2 of 2



TITLE: 12647 SIDE	JOB NO. 12647	ANTENNA MODEL: JMPC-1-R-DA	FREQ: 89.3 MHz	REV: 0
	DATE: 3/28/06	CUSTOMER:	CALL SIGN: WKKC	SHEET: 1 of 2



Azimuth Pattern

Customer: WKKC

Date: November 29, 2005

Frequency: 89.3 MHz

Type Number: JMPC-1-57.5/42.5-R-DA

Notes:

COMPOSITE PATTERN ENVELOPE (H & V)



(916) 383-1177 Fax: (916) 383-1182

6340 Sky Creek Drive, Sacramento, CA 95828

P.O. Box 292880, Sacramento, CA 95829-2880



6340 Sky Creek Drive, Sacramento, California 95828
P.O. Box 292880, Sacramento, California 95829-2880

(916) 383-1177 FAX (916) 383-1182

WKKC

ERP = 0.25 kW

November 29, 2005

JMPC-1-57.5/42.5-R-DA

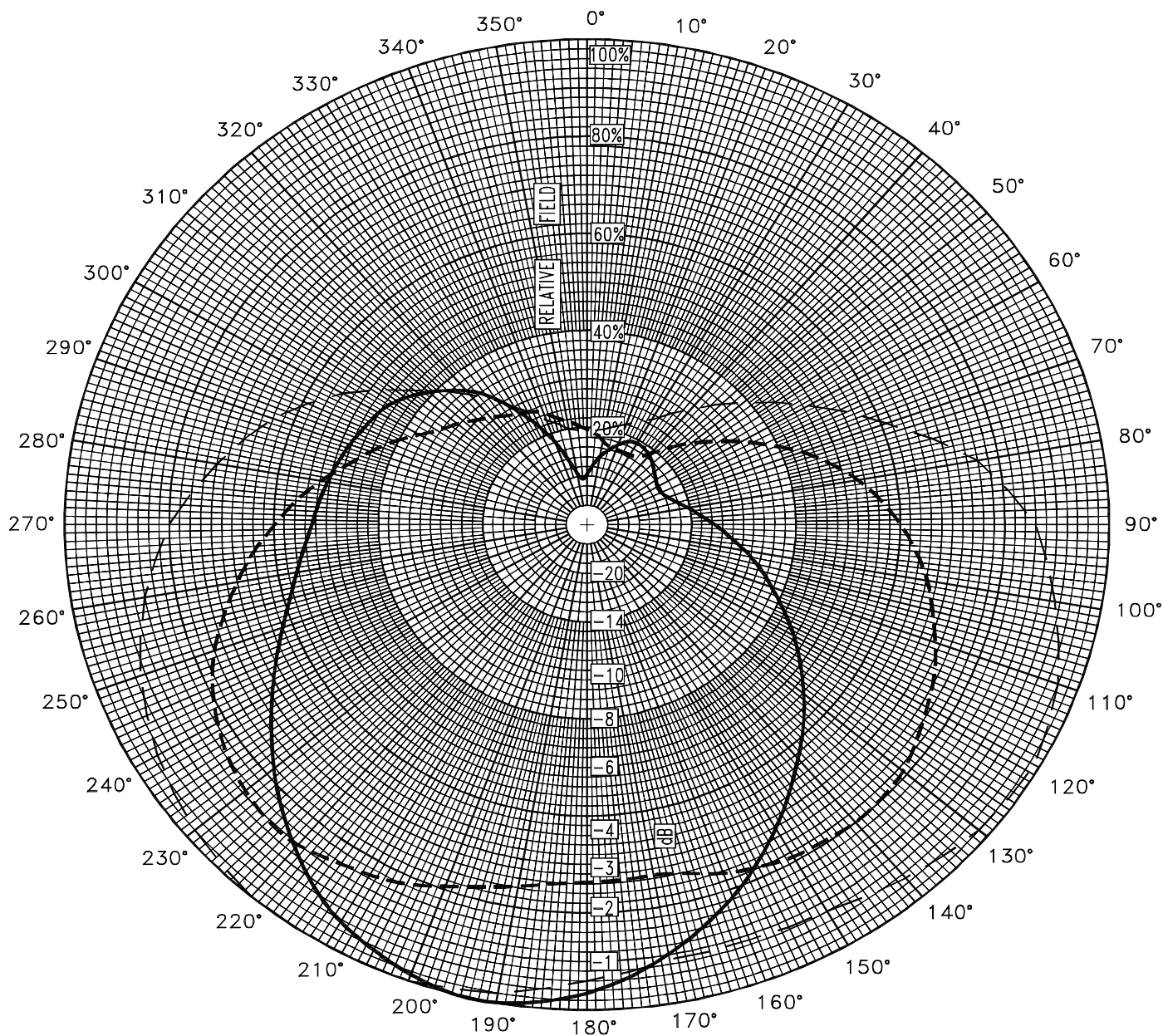
TABULATION OF RELATIVE FIELD

COMPOSITE MEASURED PATTERN (H & V)

<u>BEARING</u>	<u>FIELD</u>	<u>ERP</u> <u>(kW)</u>	<u>dBk</u>
0	0.195	0.01	-20.22
10	0.175	0.01	-21.16
20	0.177	0.01	-21.09
30	0.194	0.01	-20.28
40	0.190	0.01	-20.45
50	0.260	0.02	-17.72
60	0.345	0.03	-15.26
70	0.440	0.05	-13.15
80	0.530	0.07	-11.54
90	0.605	0.09	-10.39
100	0.665	0.11	-9.56
110	0.710	0.13	-9.00
120	0.755	0.14	-8.46
130	0.790	0.16	-8.07
140	0.805	0.16	-7.90
150	0.790	0.16	-8.07
160	0.818	0.17	-7.76
170	0.901	0.20	-6.93
180	0.968	0.23	-6.30
190	1.000	0.25	-6.02
200	0.989	0.24	-6.12
210	0.947	0.22	-6.49
220	0.871	0.19	-7.22
230	0.855	0.18	-7.38
240	0.820	0.17	-7.74
250	0.760	0.14	-8.40
260	0.685	0.12	-9.31
270	0.600	0.09	-10.46
280	0.520	0.07	-11.70
290	0.485	0.06	-12.31
300	0.463	0.05	-12.71
310	0.421	0.04	-13.53
320	0.363	0.03	-14.82
330	0.275	0.02	-17.23
340	0.245	0.02	-18.24
350	0.215	0.01	-19.37

Relative fields at other azimuths:

45	0.225	225	0.865
135	0.800	315	0.391



Azimuth Pattern

Customer: WKKC

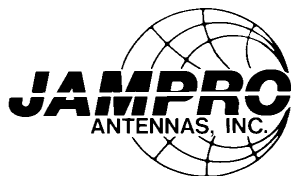
Date: November 29, 2005

Frequency: 89.3 MHz

Type Number: JMPC-1-57.5/42.5-R-DA

Notes: MEASURED PATTERN IN FULL SCALE

HPOL VPOL - - - - LIMITS



6340 Sky Creek Drive, Sacramento, CA 95828
P.O. Box 292880, Sacramento, CA 95829-2880

(916) 383-1177 Fax: (916) 383-1182



6340 Sky Creek Drive, Sacramento, California 95828
P.O. Box 292880, Sacramento, California 95829-2880

(916) 383-1177 FAX (916) 383-1182

WKKC

ERP = 0.25 kW

November 29, 2005

JMPC-1-57.5/42.5-R-DA

TABULATION OF MEASURED FIELDS

<u>BEARING</u>	<u>HORIZONTAL POLARIZATION</u>		<u>VERTICAL POLARIZATION</u>	
	<u>FIELD</u>	<u>ERP(kW)</u>	<u>FIELD</u>	<u>ERP(kW)</u>
0	0.105	0.00	0.195	0.01
10	0.143	0.01	0.175	0.01
20	0.177	0.01	0.165	0.01
30	0.194	0.01	0.165	0.01
40	0.188	0.01	0.190	0.01
50	0.169	0.01	0.260	0.02
60	0.155	0.01	0.345	0.03
70	0.165	0.01	0.440	0.05
80	0.198	0.01	0.530	0.07
90	0.247	0.02	0.605	0.09
100	0.308	0.02	0.665	0.11
110	0.377	0.04	0.710	0.13
120	0.459	0.05	0.755	0.14
130	0.544	0.07	0.790	0.16
140	0.629	0.10	0.805	0.16
150	0.725	0.13	0.790	0.16
160	0.818	0.17	0.765	0.15
170	0.901	0.20	0.735	0.14
180	0.968	0.23	0.735	0.14
190	1.000	0.25	0.755	0.14
200	0.989	0.24	0.795	0.16
210	0.947	0.22	0.835	0.17
220	0.871	0.19	0.865	0.19
230	0.785	0.15	0.855	0.18
240	0.698	0.12	0.820	0.17
250	0.620	0.10	0.760	0.14
260	0.565	0.08	0.685	0.12
270	0.527	0.07	0.600	0.09
280	0.506	0.06	0.520	0.07
290	0.485	0.06	0.440	0.05
300	0.463	0.05	0.370	0.03
310	0.421	0.04	0.320	0.03
320	0.363	0.03	0.285	0.02
330	0.275	0.02	0.265	0.02
340	0.188	0.01	0.245	0.02
350	0.106	0.00	0.215	0.01
MAXIMUM FIELDS:				
195	1.000	0.25		
225			0.865	0.19
MINIMUM FIELDS:				
355	0.090	0.00		
30			0.165	0.01

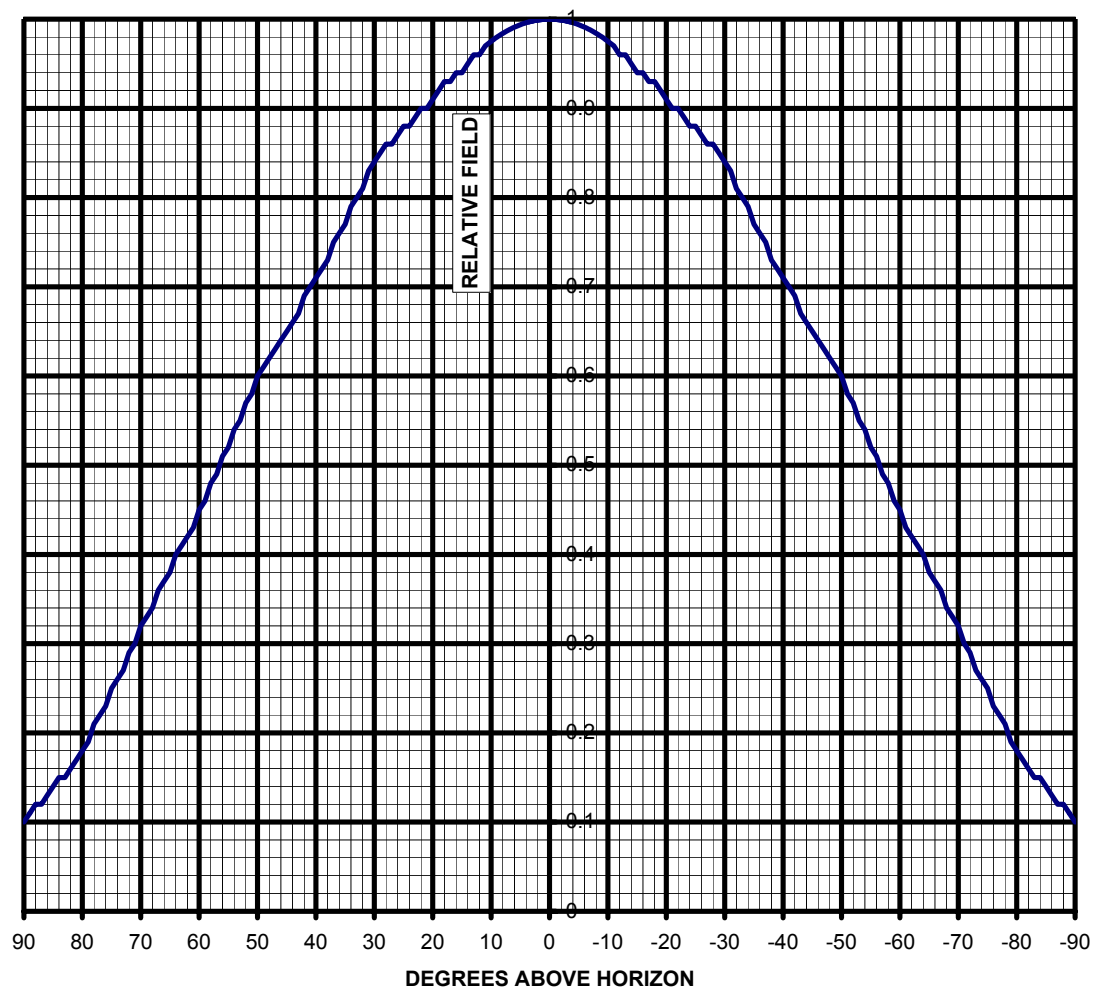


6340 Sky Creek Drive, Sacramento, California 95828
P.O. Box 292880, Sacramento, California 95829-2880

(916) 383-1177 FAX (916) 383-1182

PLOT OF ELEVATION PLANE PATTERN

STATION: WKKC 89.3 MHz JMPC-1-57.5/42.5-R-DA .00 lambda spacing





6340 Sky Creek Drive, Sacramento, California 95828
P.O. Box 292880, Sacramento, California 95829-2880

(916) 383-1177 FAX (916) 383-1182

TABULATION OF ELEVATION PLANE PATTERN

STATION: WKKC 89.3 MHz JMPC-1-57.5/42.5-R-DA .00 lambda spacing

<u>ELEVATION</u> <u>ANGLE</u>	<u>RELATIVE</u> <u>FIELD</u>	<u>ELEVATION</u> <u>ANGLE</u>	<u>RELATIVE</u> <u>FIELD</u>	<u>ELEVATION</u> <u>ANGLE</u>	<u>RELATIVE</u> <u>FIELD</u>
10	0.975	-25	0.880	-60	0.450
9	0.980	-26	0.870	-61	0.430
8	0.984	-27	0.860	-62	0.420
7	0.988	-28	0.860	-63	0.410
6	0.991	-29	0.850	-64	0.400
5	0.994	-30	0.840	-65	0.380
4	0.996	-31	0.830	-66	0.370
3	0.998	-32	0.810	-67	0.360
2	0.999	-33	0.800	-68	0.340
1	1.000	-34	0.790	-69	0.330
0	1.000	-35	0.770	-70	0.320
-1	1.000	-36	0.760	-71	0.300
-2	0.999	-37	0.750	-72	0.290
-3	0.998	-38	0.730	-73	0.270
-4	0.996	-39	0.720	-74	0.260
-5	0.994	-40	0.710	-75	0.250
-6	0.991	-41	0.700	-76	0.230
-7	0.988	-42	0.690	-77	0.220
-8	0.984	-43	0.670	-78	0.210
-9	0.980	-44	0.660	-79	0.190
-10	0.975	-45	0.650	-80	0.180
-11	0.970	-46	0.640	-81	0.170
-12	0.960	-47	0.630	-82	0.160
-13	0.960	-48	0.620	-83	0.150
-14	0.950	-49	0.610	-84	0.150
-15	0.940	-50	0.600	-85	0.140
-16	0.940	-51	0.580	-86	0.130
-17	0.930	-52	0.570	-87	0.120
-18	0.930	-53	0.550	-88	0.120
-19	0.920	-54	0.540	-89	0.110
-20	0.910	-55	0.520	-90	0.100
-21	0.900	-56	0.510		
-22	0.900	-57	0.490		
-23	0.890	-58	0.480		
-24	0.880	-59	0.460		