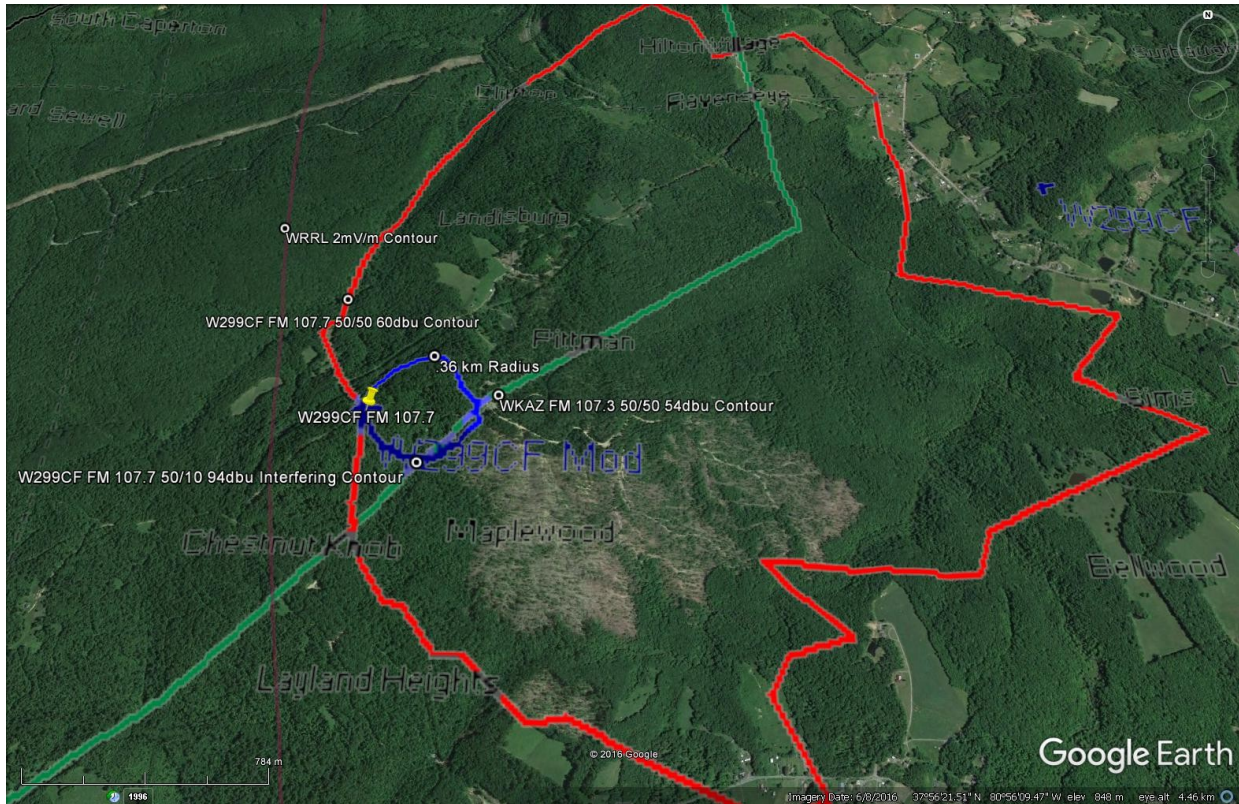


Comprehensive Technical Exhibit for W299CF

Minor Change 10/27/2016

Contour Overview Map



Spacing Table

ComStudy 2.2 search of channel 299 (107.7 MHz Class D) at 37-56-18.8 N, 80-56-49.3 W.

CALL	CITY	ST	CHN	CL	DIST	SEP	BRNG	CLEARANCE
WYYD-FM1	ROANOKE	VA	300	D	111.62	0.00	130.4	24.03 dB
WYYD	AMHERST	VA	300	C1	148.03	0.00	110.1	30.62 dB
WYYD	AMHERST	VA	300	C1	160.28	0.00	104.7	34.54 dB
WWWT-FM	MANASSAS	VA	299	B	286.26	0.00	70.8	34.48 dB
WWWT-FM	MANASSAS	VA	299	B	286.26	0.00	70.8	35.61 dB
WVRW*	GLENVILLE	WV	299	A	108.66	0.00	4.8	37.63 dB
WVRW	GLENVILLE	WV	299	A	108.10	0.00	5.4	23.77 dB
WPSK-FM	PULASKI	VA	296	C3	102.99	0.00	170.1	27.88 dB
WKZL	WINSTON-SALEM	NC	298	C	205.06	0.00	153.9	34.28 dB
WKAZ-FM	MIAMI	WV	297	B	62.81	0.00	306.6	-0.65 dB
WKAZ-FM	MIAMI	WV	297	B	62.81	0.00	306.6	28.35 dB
WHQX	GARY	WV	299	C3	106.12	0.00	212.7	25.53 dB
WFSP-FM	KINGWOOD	WV	299	A	205.17	0.00	34.2	35.37 dB
WFSP-FM	KINGWOOD	WV	299	A	201.73	0.00	31.5	37.07 dB
WEMM-FM	HUNTINGTON	WV	300	B	129.25	0.00	298.0	20.74 dB
WEGW	WHEELING	WV	298	B	236.26	0.00	4.0	39.61 dB
WCHG	HOT SPRINGS	VA	296	A	102.95	0.00	83.9	36.97 dB
W299AS	HAZARD	KY	299	D	210.73	0.00	249.5	36.17 dB
W298BQ	COVINGTON	VA	298	D	90.67	0.00	100.0	14.38 dB

W299CF-FMX 107.7 Ch 299
Contour Overlap Protection & Waiver Request to
WKAZ FM 107.3 Ch 207

50/10 94dbu .36km Radius demonstrating no buildings, houses, farms, or population within the contour

