

W45AA CHANNEL 45 TRANSLATOR
DIGITAL FLASHCUT APPLICATION
COLUMBIA, MISSISSIPPI
(MISSISSIPPI AUTHORITY FOR EDUCATIONAL TELEVISION)

KESSLER AND GEHMAN ASSOCIATES, INC.
TELECOMMUNICATIONS CONSULTING ENGINEERS

20091217

Prepared by William T. Godfrey, Jr.

KG&A

507 N.W. 60th Street, Suite C
Gainesville, Florida 32607



Kessler and Gehman Associates, Inc.

Telecommunications Consulting Engineers

ENGINEERING TECHNICAL STATEMENT PREPARED BY WILLIAM T. GODFREY, JR WITH THE FIRM KESSLER AND GEHMAN ASSOCIATES, INC., TELECOMMUNICATIONS CONSULTING ENGINEERS IN CONNECTION WITH A DIGITAL TELEVISION TRANSLATOR FLASHCUT APPLICATION FOR THE MISSISSIPPI AUTHORITY FOR EDUCATIONAL TELEVISION (MAET) TRANSLATOR FACILITY W45AA (BLTT-20010906ABK), COLUMBIA, MISSISSIPPI.

The firm Kessler and Gehman Associates, Inc. (KGA) has been retained by the Mississippi Authority for Educational Television (MAET), Jackson, MS to prepare engineering studies and the engineering portion of a digital television translator flashcut application requesting authorization to convert the W45AA translator facility from analog to digital.

Discussion

MAET is licensed to operate the W45AA analog translator (BLTT-20010906ABK) on Channel 45 with an ERP of 14.2 kW at an antenna height radiation center of 87.5 meters above ground level (AGL) using a Bogner model B16UO nondirectional antenna. This minor change in license application requests authorization to make the following changes: 1) flashcut from analog to digital; and 2) increase the ERP from the 14.2 kW to 15.0 kW. This application also requests to make the following corrections:

- 1) Correct antenna height radiation center from 87.5 meters AGL to 80.1 meters AGL.
- 2) Correct coordinates:

From -

Latitude:	N	31°	16 '	0 "
Longitude:	W	89°	49 '	56 "

To -

Latitude:	N	31°	16 '	01 "
Longitude:	W	89°	49 '	57 "



Exhibit 7 is a principal community contour map demonstrating that the proposed W45AA Channel 45 digital translator facility's F(50,90) 51.6 dBuV/m contour will completely encompass the principal community of Columbia, MS.

Exhibit 8 is a coverage contour map depicting the licensed F(50,50) 74.6 dBuV/m protected contour (red contour) and the proposed F(50,90) 51.6 dBuV/m protected contour (blue contour). It can be seen that the proposed facility will exceed replication in all azimuthal directions. Therefore, the public interest will be served by receiving coverage in eight counties from the proposed digital translator facility instead of in just one county from the licensed analog translator facility.

Interference Studies

Exhibit 9 is a Longley-Rice interference study that was computed using a Sun Microsystems computer work station loaded with the FCC's DTV/LPTV analysis software. The interference percentages are exactly the same as the FCC calculations since the study was performed using the same type computer and the same interference analysis software. Exhibit 9 demonstrates that the proposed digital W45AA Channel 45 facility will not cause more than 0.5% interference to full-service and/or Class A LPTV/translator stations. Exhibit 9 demonstrates that the proposed digital W45AA Channel 45 facility will not cause more than 2.0% interference to secondary LPTV/translator stations and also demonstrates compliance for FCC Monitoring Stations, West Virginia Quiet Zones, Table Mountain, and Canadian/Mexican border coordination. Accordingly, the proposed W45AA Channel 45 digital television translator facility satisfies the interference protection provisions of 47 C.F.R. §§74.709, 74.793(e), 74.793(f), 74.793(g), 74.793(h), 74.794(b) and 73.1030 of the FCC rules.

Transmitter Site

The proposed W45AA Channel 45 digital television translator facility will use the licensed Bogner model B16UO nondirectional antenna. The tower is registered with the FCC and the



Kessler and Gehman Associates, Inc.

Telecommunications Consulting Engineers

antenna structure registration number (ASRN) is 1205697. The support structure is located at 1322 Highway 13 North in Columbia, MS. The proposed antenna height radiation center is 80.1 meters AGL (Exhibit 3).

Exhibits

Exhibits 1 and 2 represent the W45AA facility's administration data as well as the antenna and antenna structure specifications for the proposed digital Channel 45.

Exhibit 3 depicts the profile view of the W45AA facility's antenna on the antenna structure with all the appropriate elevations.

Exhibit 4 displays the antenna elevation pattern from 8° above the horizontal to 20° below the horizontal.

Exhibit 5 displays the antenna elevation pattern from 0° (horizon) to 90° below the horizontal.

Exhibit 6 depicts the location of the W45AA transmitter site using the Columbia North, Miss Topographic map.

Exhibit 7 is a principal community contour map demonstrating that the proposed W45AA Channel 45 digital translator facility's F(50,90) 51.6 dBuV/m contour completely encompasses the principal community of Columbia, MS.

Exhibit 8 is a contour map comparing the licensed W45AA Channel 45 analog facility's F(50,50) 74.6 dBuV/m contour (red) and the proposed W45AA Channel 45 digital facility's F(50,90) 51.6 dBuV/m contour (blue).

Exhibit 9 is a Longley-Rice interference study computed using a Sun Microsystems computer work station loaded with the FCC's DTV/LPTV analysis software. The exhibit



demonstrates compliance with the interference requirements pursuant to §§74.709, 74.793(e), 74.793(f), 74.793(g), 74.793(h), 74.794(b) and 73.1030 of the FCC rules.

Environmental Impact

The proposed construction will have no significant environmental impact as defined in §1.1307 of the FCC Rules. The digital transmitter, transmission line and antenna system will produce an ERP of 15.0 kW. It was determined that the maximum lobe of radiation from the base of the tower occurs at approximately 2,936.4 feet (2,947.6-foot radial distance from the antenna center). At approximately 2,936.4 feet from the base of the tower, the depression angle of the main lobe is approximately 5.0° below the horizontal. At that point, the relative field is no greater than 0.40 which equates to a power density six feet above the ground of 0.01315 mW/cm². This is only 0.60% of the Maximum Permissible Exposure (MPE) limits for Occupational/Controlled Exposure and only 2.99% of the MPE limits for General Population/Uncontrolled Exposure authorized by the American National Standards Institute (ANSI). Since the proposed operation of the W45AA Channel 45 digital translator facility will not exceed 5.0% of the MPE limit for Occupational/Controlled Exposure or General Population/Uncontrolled Exposure at any point on the ground, the proposed W45AA facility is not considered a “significant contributor” to the RF exposure environment pursuant to OET Bulletin 65, Edition 97-01. Therefore, contributions of exposure from other sources were not accounted for in this analysis. It is safe to conclude that the emissions would be insignificant and well within the maximum allowable requirements.

If other antennas are placed on the tower in the future, the applicant will cooperate with those users by reducing or completely terminating the power to the antenna when maintenance workers are in danger from the electromagnetic radiation emanating from the antenna. It is understood that additional “future” antennas mounted on the support structure could increase the overall RF exposure levels and it is the responsibility of each licensee to ensure that the total RF



Kessler and Gehman Associates, Inc.

Telecommunications Consulting Engineers


exposure resulting from the operation of all antennas on the support structure do not exceed the maximum permissible exposure level at any point on the ground.

Certification

This technical statement was prepared by William T. Godfrey, Jr. Telecommunications Technical Consultant with the firm Kessler and Gehman Associates, Inc. having offices in Gainesville, Florida and has been working in the field of radio and television broadcast consulting since 1998. He graduated from the University of North Florida with a Bachelor of Arts degree in Criminal Justice and a minor in Mathematics in 1993. As a Professional in the field of Telecommunications he states under penalty of perjury that the information contained in this report is true and correct to the best of his knowledge and belief.



KESSLER AND GEHMAN ASSOCIATES, INC.


WILLIAM T. GODFREY, JR.
Telecommunications Technical Consultant

17 December, 2009

W45AA
Columbia, Mississippi

ENGINEERING SPECIFICATIONS

A. Transmitter Site

Geographic coordinates (NAD27):

North Latitude	31° 16' 01"
West Longitude	89° 49' 57"

Site Address: **1322 Highway 13 North, Columbia, MS**

B. Main Studio Site

Street Address **3825 Ridgewood Road, Jackson, MS**
 (Hinds County) 39211-6463

C. Proposed Facility

Digital Channel	Number	45
	Frequency	656-662 MHz

D. Antenna Height

Height of Site Above Mean Sea Level (AMSL)	59.2 M
Overall Height of Structure Above Ground	85.3 M
(including all appurtenances)	
Overall Height of Structure Above Mean Sea Level	144.5 M
(including all appurtenances)	
Height of Site Above Average Terrain	-10.6 M
Antenna Height Radiation Center (R/C) Above Ground	80.1 M
Antenna Height R/C Above Average Terrain	69.5 M
Antenna Height R/C Above Mean Sea Level	139.3 M
Average of All Non-Odd Radials	69.8 M

E. System Parameters:

Transmitter Power Required	0.97 kW
Maximum Power Input to Antenna	0.66 kW
Transmission Line Loss	1.65 dB
Transmission Line Efficiency	68.4%
Maximum Antenna Gain in Beam Maximum	13.54 dB
Maximum Antenna Gain in Horizontal Plane	11.61 dB
Maximum Effective Radiated Power	11.76 dBk
In Beam Maximum	15.0 kW
Maximum Effective Radiated Power	9.83 dBk
In Horizontal Plane	9.6 kW

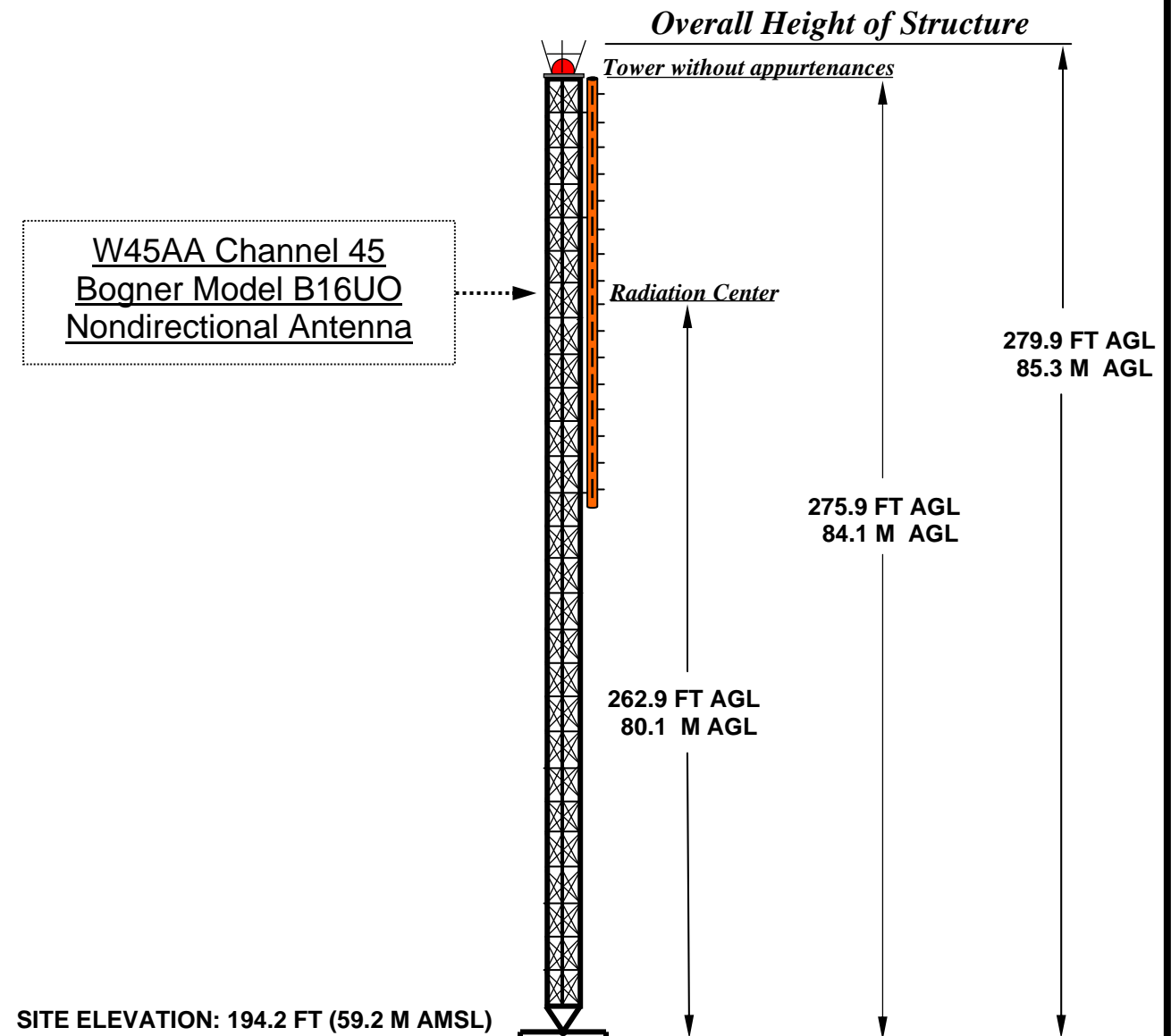
W45AA
Columbia, Mississippi

**DATA FOR DTV NONDIRECTIONAL
TRANSMITTING ANTENNA**

- A. **Antenna:** Side-mounted Bogner Model B16UO,
Nondirectional Antenna.
- B. **Electrical Beam Tilt:** 0.8°
- C. **Mechanical Beam Tilt:** N/A
- D.

<u>Maximum Power Gain</u>	<u>Horizontal Polarization</u>
Maximum:	22.6 (13.54 dB)
Horizontal:	14.5 (11.61 dB)
- E. **Length:** 26.0 feet (7.9 meters)
- F. **Average Power Required:** 0.97 kW
- G. **Null Fill:** 17.5%
- H. **Transmission Line:** HJ7-50A
- I. **Transmission Line Efficiency:** 68.4%
- J. **Transmission Line Length:** 300 feet (91.4 m)
- K. **Transmission Line Attenuation:** 0.550 dB/100 ft
- L. **Transmission Line Loss:** 1.65 dB

W45AA Tower Elevation View



OVERALL HEIGHT AGL: 85.3 M
OVERALL HEIGHT AMSL: 144.5 M
RADIATION CENTER AGL: 80.1 M
RADIATION CENTER AMSL: 139.3 M
RADIATION CENTER HAAT: 69.5 M
AVG OF ALL NON-ODD RADIALS: 69.8 M
SITE HAAT: -10.6 M

COORDINATES (NAD 27):
N. LATITUDE 31° 16' 01"
W. LONGITUDE 89° 49' 57"
Antenna Structure Registration Number:
1205697

NOTE: NOT TO SCALE

KESSLER AND GEHMAN
TELECOMMUNICATIONS CONSULTING ENGINEERS
507 N.W. 60th Street, Suite C
Gainesville, Florida 32607

W45AA CHANNEL 45
Columbia, Mississippi

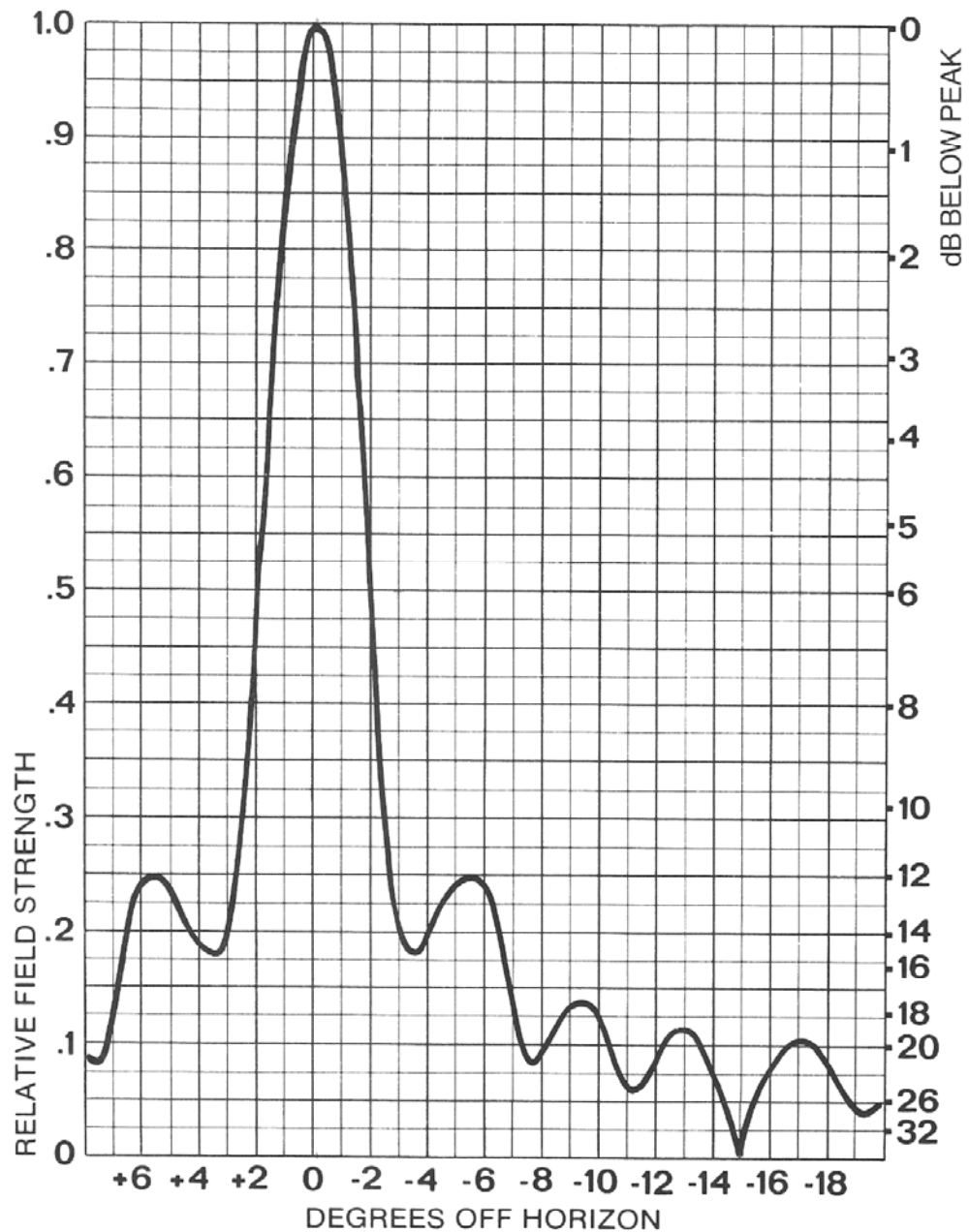
20091214

EXHIBIT 3

BOGNER
ANTENNAS

**VERTICAL
PLANE
PATTERN**

16 BAY (B16U, B16S)
LOW AND MEDIUM POWER
ANTENNAS - CATALOG 301

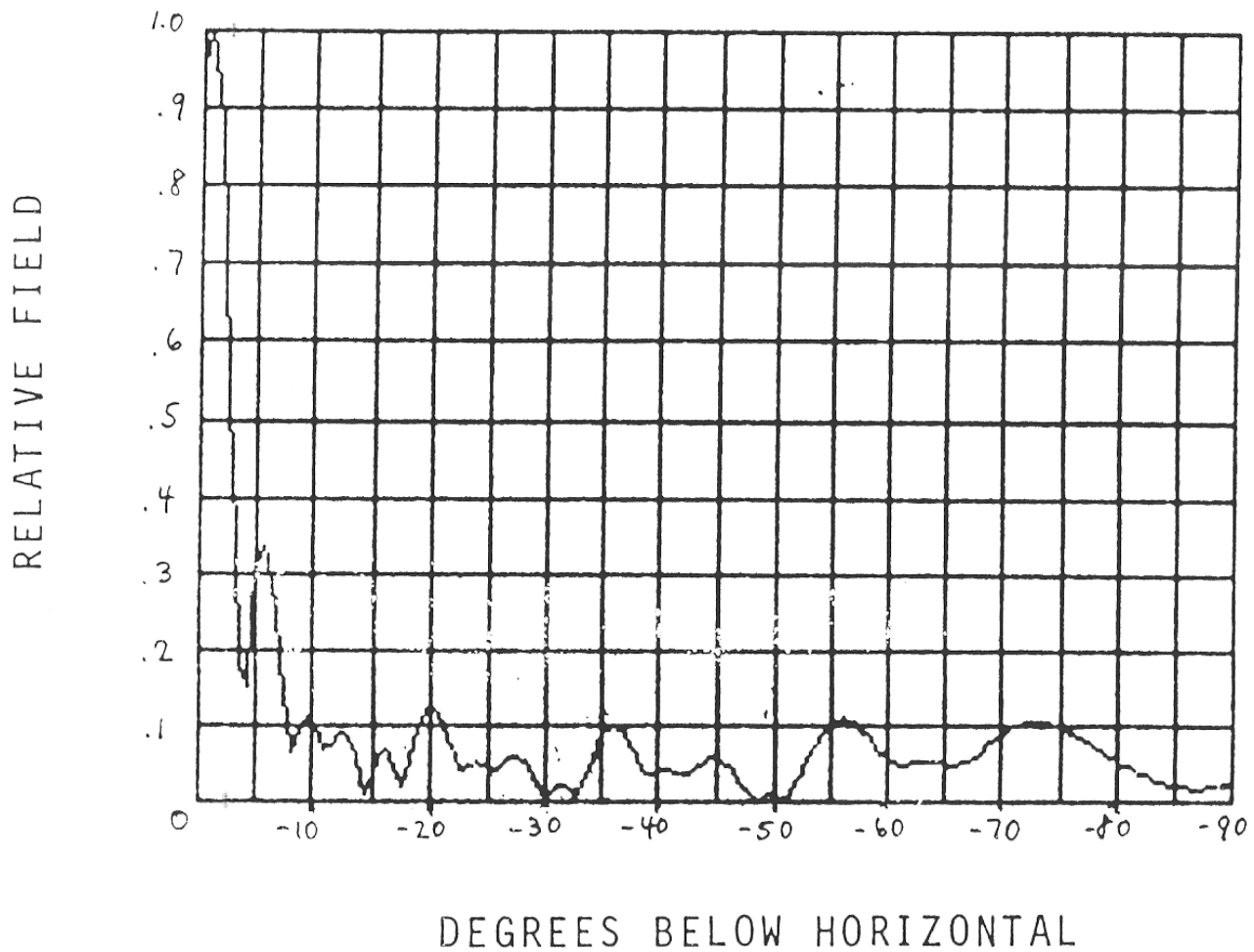


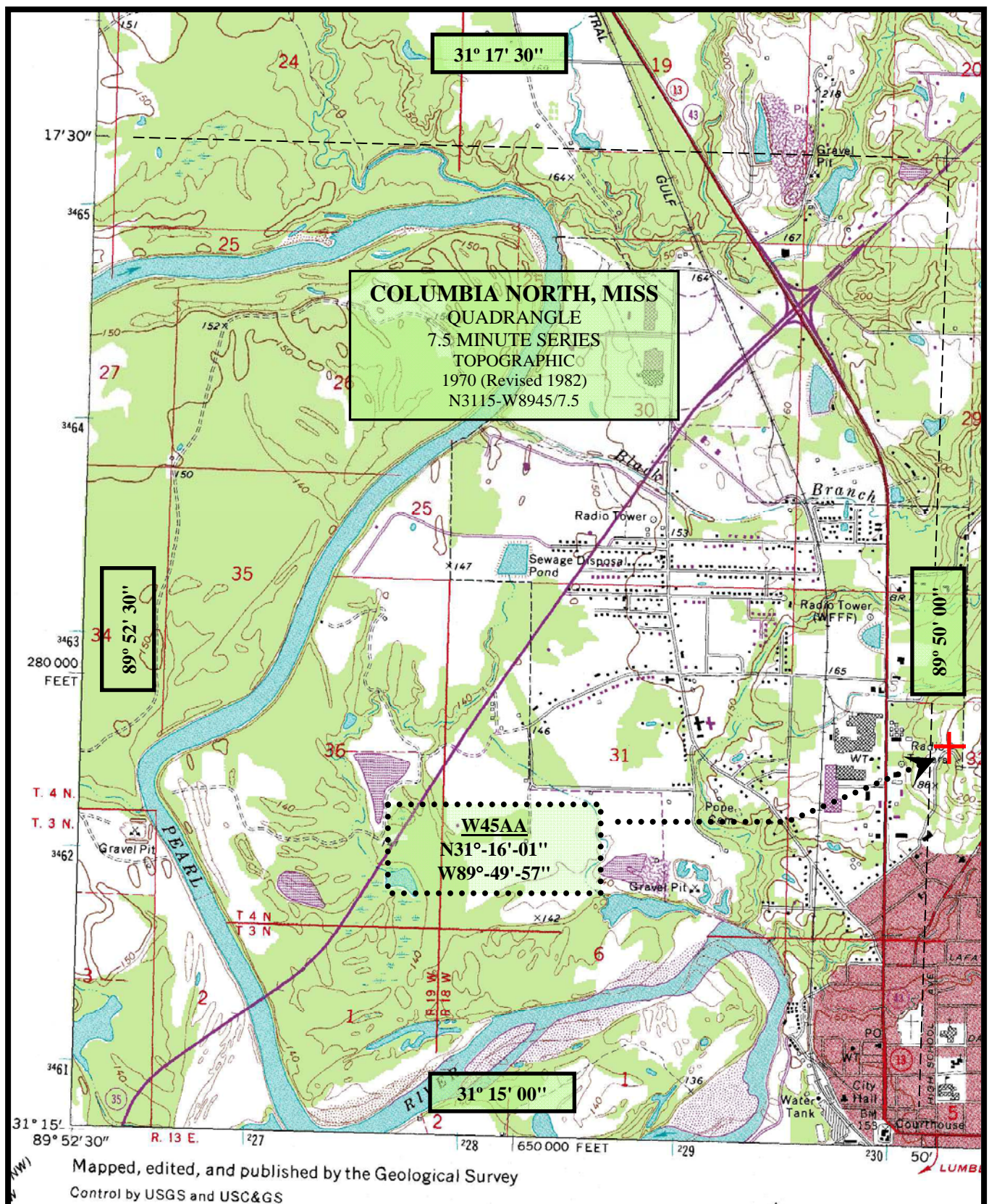
Bogner Broadcast Equipment Corp.
401 Railroad Avenue, Westbury, N.Y. 11590
Tel: (516) 997-7800

BOGNER BROADCAST EQUIPMENT CORP.

603 Cantlague Rock Road
WESTBURY, NEW YORK 11590

BOGNER VERTICAL PLANE RADIATION PATTERN B16U() LOW & MEDIUM POWER



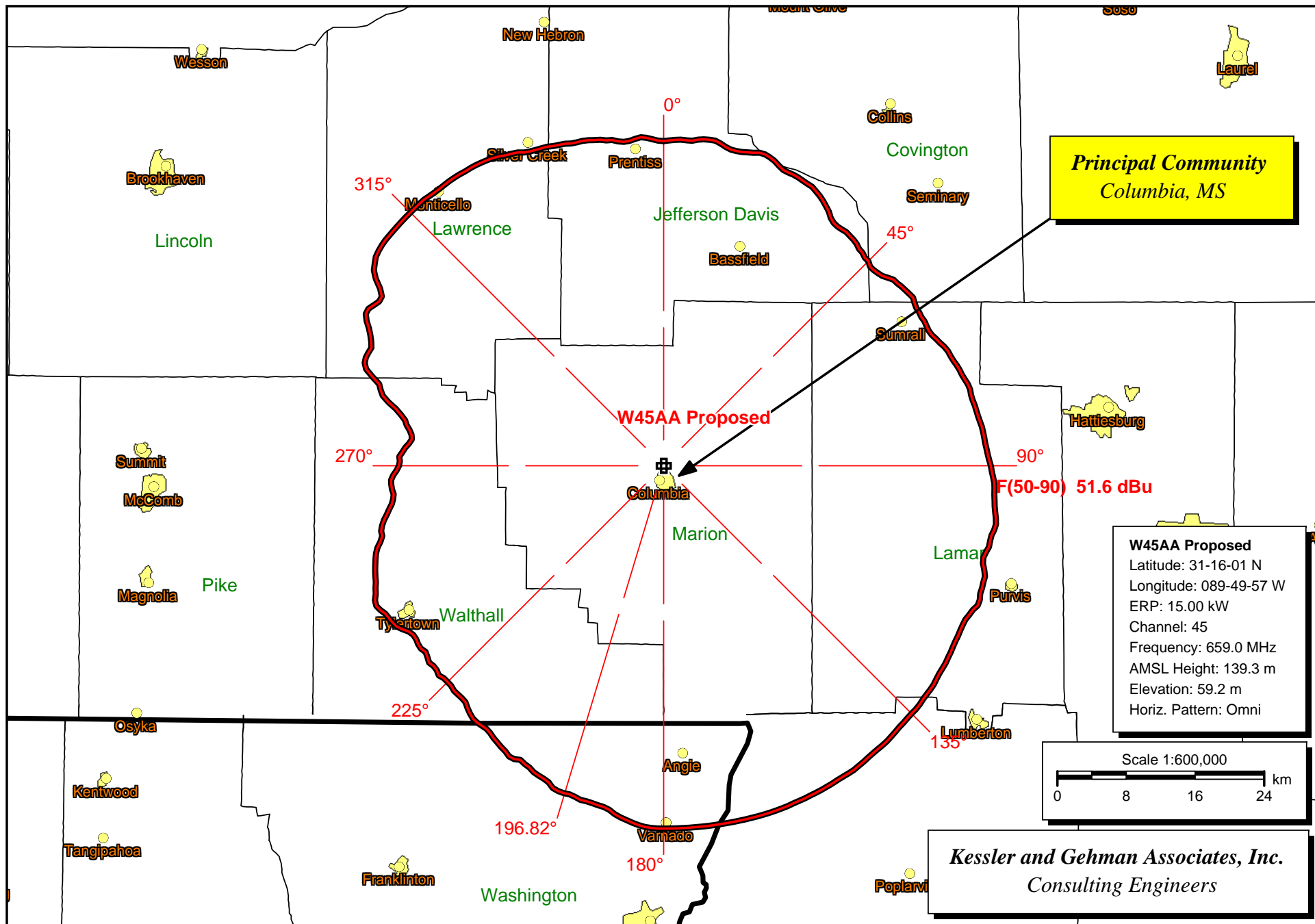


KESSLER AND GEHMAN
 TELECOMMUNICATIONS CONSULTING ENGINEERS
 507 N.W. 60th Street, Suite C
 Gainesville, Florida 32607

W45AA Channel 45
 Columbia, Mississippi

20091216

EXHIBIT 6



Proposed W45AA Channel 45 Principal Community Map

W45AA Analog Channel 45 (License) vs. W45AA Digital Channel 45 (Proposed)

Census data selected: 2000

Post DTV Transition Database Selected

TV INTERFERENCE and SPACING ANALYSIS PROGRAM

Date: 12-16-2009 Time: 14:36:04

Record Selected for Analysis

W45AA PR USERRECORD-01 COLUMBIA MS US
Channel 45 ERP 15. kW HAAT 69. m RCAMSL 00139 m STRINGENT MASK
Latitude 031-16-01 Longitude 0089-49-57
Status APP Zone 3 Border
Dir Antenna Make usr Model USRPAT01 Beam tilt N Ref Azimuth 0.
Last update Cutoff date Docket
Comments
Applicant

Cell Size for Service Analysis 1.0 km/side

Distance Increments for Longley-Rice Analysis 1.00 km

Not full service station

Facility meets maximum power limit

Azimuth (Deg)	ERP (kW)	HAAT (m)	51.0 dBu F(50,90) (km)
0.0	15.000	67.0	38.1
45.0	15.000	46.6	34.0
90.0	15.000	68.8	38.3
135.0	15.000	86.5	41.0
180.0	15.000	97.7	42.4
225.0	15.000	54.4	35.8
270.0	15.000	37.9	31.5
315.0	15.000	93.3	41.9

Contour Overlap to Proposed Station

Contour Overlap Evaluation to Proposed Station Complete

LANDMOBILE SPACING VIOLATIONS FOUND

NONE

Proposed facility OK to FCC Monitoring Stations

Proposed facility OK toward West Virginia quiet zone

Proposed facility OK toward Table Mountain

Proposed facility is beyond the Canadian coordination distance

Proposed facility is beyond the Mexican coordination distance

Proposed station is OK toward AM broadcast stations

Start of Interference Analysis

Channel	Proposed Station Call	City/State	ARN
45	W45AA PR	COLUMBIA MS	USERRECORD01

Stations Potentially Affected by Proposed Station

Chan	Call	City/State	Dist(km)	Status	Application	Ref. No.
44	W44CE	VIDALIA LA	142.2	LIC	BLTT	-20060109AAB
44	WMAW-TV	MERIDIAN MS	119.4	CP	BPEDT	-20000501AHT
45	WJTC	PENSACOLA FL	230.0	LIC	BLCDDT	-20021025ABG
45	K45IY	ALEXANDRIA LA	247.7	LIC	BLTT	-20060502ADK
45	WGMB-TV	BATON ROUGE LA	173.0	LIC	BLCDDT	-20060103ACW
45	K45HY	LAKE CHARLES LA	343.9	CP	BDFCDTL	-20090824AAZ
45	K45HY	LAKE CHARLES LA	344.4	LIC	BLTTTL	-20070316ACZ
45	K45DI	MERMENTAU LA	292.0	LIC	BLTT	-19931025IC
45	K45IM	MONROE LA	263.0	LIC	BLTT	-20050429ABX
45	WKDH	HOUSTON MS	289.5	CP	BPCDDT	-20060519ABE
46	WBXH-CA	BATON ROUGE LA	152.0	LIC	BLTTTL	-19900410IC
46	W46CW	JACKSON/BRANDON MS	131.8	LIC	BLTTTL	-20021017AAT
46	W46CL	MERIDIAN MS	120.5	CP	BPTTL	-20080430ADZ
46	W46CL	MERIDIAN MS	120.5	LIC	BLTTTL	-20070828ACK
47	K47JO	NEW ORLEANS LA	150.9	LIC	BLTT	-20060828AFG
47	W47BP	HATTIESBURG MS	40.1	APP	BSTA	-20090116ABE
47	W47BP	HATTIESBURG MS	44.9	LIC	BLTT	-19930519IB
47	W47BP	HATTIESBURG MS	40.2	CP	BPTT	-20081118ABV
47	W47CG	MERIDIAN MS	159.8	LIC	BLTT	-20000317AAV
48	K48IT	BATON ROUGE LA	173.1	LIC	BLTT	-20070226AES
49	WJXF-LP	JACKSON MS	118.8	APP	BSTA	-20090723AEN
49	WJXF-LP	JACKSON MS	120.9	LIC	BLTTTL	-19981106JC
52	W52CS	.MERIDIAN MS	120.5	CP	BPTTL	-20071211ABQ
52	W26BR	GULFPORT MS	94.5	APP	BMPTTL	-20000711AAO
52	W52CS	MERIDIAN MS	120.5	LIC	BLTTTL	-20070828ACT
53	WJMF-LP	JACKSON MS	120.9	LIC	BLTTTL	-19981106JB
53	W53CE	LAUREL MS	83.9	LIC	BLTTTL	-20041117ADS
53	W53CS	TYLERTOWN MS	26.5	CP	BNPTTL	-20000831ARQ

%%%

Analysis of Interference to Affected Station 1

Analysis of current record

Channel	Call	City/State	Application Ref. No.
44	W44CE	VIDALIA LA	BLTT -20060109AAB

Stations Potentially Affecting This Station

Chan	Call	City/State	Dist(km)	Status	Application Ref. No.
36	KARD	WEST MONROE LA	108.1	CP MOD	BMPCDT -20070125ACR
36	KARD	WEST MONROE LA	108.1	PLN	DTVPLN -DTVP1327
40	WDBD	JACKSON MS	122.0	CP	BPCDT -20080401ATJ
40	WDBD	JACKSON MS	122.0	PLN	DTVPLN -DTVP1437
41	KBCA	ALEXANDRIA LA	138.7	CP MOD	BMPCDT -20080827AAE
41	KBCA	ALEXANDRIA LA	138.4	PLN	DTVPLN -DTVP1469
41	WUFY	VICKSBURG MS	122.0	CP	BPCDT -20080618ATF
41	WUFY	VICKSBURG MS	117.1	PLN	DTVPLN -DTVP1474
44	KWBF	LITTLE ROCK AR	387.3	PLN	DTVPLN -DTVP1561
44	KARZ-TV	LITTLE ROCK AR	387.7	CP MOD	BMPCDT -20081208AEN
44	K63HF	LAKE CHARLES LA	226.6	APP	BDISDTL -20090824AFG
44	KSHV-TV	SHREVEPORT LA	280.9	LIC	BLCDDT -20060215ACP
44	KSHV	SHREVEPORT LA	280.9	PLN	DTVPLN -DTVP1574
44	WMAW-TV	MERIDIAN MS	223.2	CP	BPEDT -20000501AHT
44	WMAW-TV	MERIDIAN MS	223.2	PLN	DTVPLN -DTVP1580
44	KVHP-LD	JASPER TX	259.8	LIC	BLDTL -20091022ABR
44	KVHP-LD	JASPER TX	259.8	CP MOD	BMPDCL -20091020ABD
44	NEW	TYLER TX	389.1	APP	BNPDCL -20091123AIZ
45	WGMB-TV	BATON ROUGE LA	125.5	LIC	BLCDDT -20060103ACW
45	WGMB	BATON ROUGE LA	125.5	PLN	DTVPLN -DTVP1611
51	WWJX	JACKSON MS	123.3	APP	BPCDT -20090929ADE
51	WWJX	JACKSON MS	122.6	PLN	DTVPLN -DTVP1801
51	WWJX	JACKSON MS	113.7	CP MOD	BMPCDT -20090724AAL
45	W45AA PR	COLUMBIA MS	142.2	APP	USERRECORD-01

Proposed station is beyond the site to
nearest cell evaluation distance

#####

Analysis of Interference to Affected Station 2

Analysis of current record

Channel	Call	City/State	Application Ref. No.
44	WMAW-TV	MERIDIAN MS	BPEDT -20000501AHT

Stations Potentially Affecting This Station

Chan	Call	City/State	Dist(km)	Status	Application Ref. No.
43	WMAA	COLUMBUS MS	192.9	CP MOD	BMPEDT -20020611ABI
43	WMAA	COLUMBUS MS	192.9	PLN	DTVPLN -DTVP1542
44	WGIQ	LOUISVILLE AL	348.3	LIC	BLEDT -20031121ANL
44	WGIQ	LOUISVILLE AL	348.3	PLN	DTVPLN -DTVP1560
45	WJTC	PENSACOLA FL	226.0	LIC	BLCDDT -20021025ABG
45	WJTC	PENSACOLA FL	226.0	PLN	DTVPLN -DTVP1604
45	WKDH	HOUSTON MS	184.1	CP	BPCDT -20060519ABE
45	WKDH	HOUSTON MS	184.0	PLN	DTVPLN -DTVP1616
45	W45AA PR	COLUMBIA MS	119.4	APP	USERRECORD-01

Total scenarios = 4

Result key: 1
Scenario 1 Affected station 2 WMAW-TV
Before Analysis

Results for: 44A MS MERIDIAN BPEDT 20000501AHT CP
HAAT 369.0 m, ATV ERP 880.0 kW

	POPULATION	AREA (sq km)
within Noise Limited Contour	669551	32160.0
not affected by terrain losses	660334	31867.5
lost to NTSC IX	0	0.0
lost to additional IX by ATV	15	2.9
lost to ATV IX only	15	2.9
lost to all IX	15	2.9

Potential Interfering Stations Included in above Scenario 1

45A MS HOUSTON BPCDT 20060519ABE CP

After Analysis

Results for: 44A MS MERIDIAN BPEDT 20000501AHT CP
HAAT 369.0 m, ATV ERP 880.0 kW

	POPULATION	AREA (sq km)
within Noise Limited Contour	669551	32160.0
not affected by terrain losses	660334	31867.5
lost to NTSC IX	0	0.0
lost to additional IX by ATV	1483	102.1
lost to ATV IX only	1483	102.1
lost to all IX	1483	102.1

Potential Interfering Stations Included in above Scenario 1

45A MS HOUSTON BPCDT 20060519ABE CP
45A MS COLUMBIA USERRECORD01 APP

Percent new IX = 0.2223%

Result key: 2
Scenario 2 Affected station 2 WMAW-TV
Before Analysis

Results for: 44A MS MERIDIAN BPEDT 20000501AHT CP
HAAT 369.0 m, ATV ERP 880.0 kW

	POPULATION	AREA (sq km)
within Noise Limited Contour	669551	32160.0
not affected by terrain losses	660334	31867.5
lost to NTSC IX	0	0.0
lost to additional IX by ATV	15	2.9
lost to ATV IX only	15	2.9
lost to all IX	15	2.9

Potential Interfering Stations Included in above Scenario 2

45A MS HOUSTON DTVPLN DTVP1616 PLN

After Analysis

Results for: 44A MS MERIDIAN BPEDT 20000501AHT CP

HAAT 369.0 m, ATV ERP 880.0 kW

	POPULATION	AREA (sq km)
within Noise Limited Contour	669551	32160.0
not affected by terrain losses	660334	31867.5
lost to NTSC IX	0	0.0
lost to additional IX by ATV	1483	102.1
lost to ATV IX only	1483	102.1
lost to all IX	1483	102.1

Potential Interfering Stations Included in above Scenario 2

45A MS HOUSTON DTVPLN DTVP1616 PLN

45A MS COLUMBIA USERRECORD01 APP

Percent new IX = 0.2223%

Result key: 3

Scenario 3 Affected station 2 WMAW-TV

Before Analysis

Results for: 44A MS MERIDIAN BPEDT 20000501AHT CP

HAAT 369.0 m, ATV ERP 880.0 kW

	POPULATION	AREA (sq km)
within Noise Limited Contour	669551	32160.0
not affected by terrain losses	660334	31867.5
lost to NTSC IX	0	0.0
lost to additional IX by ATV	15	2.9
lost to ATV IX only	15	2.9
lost to all IX	15	2.9

Potential Interfering Stations Included in above Scenario 3

45A MS HOUSTON BPCDT 20060519ABE CP

After Analysis

Results for: 44A MS MERIDIAN BPEDT 20000501AHT CP

HAAT 369.0 m, ATV ERP 880.0 kW

	POPULATION	AREA (sq km)
within Noise Limited Contour	669551	32160.0
not affected by terrain losses	660334	31867.5
lost to NTSC IX	0	0.0
lost to additional IX by ATV	1483	102.1
lost to ATV IX only	1483	102.1
lost to all IX	1483	102.1

Potential Interfering Stations Included in above Scenario 3

45A MS HOUSTON BPCDT 20060519ABE CP

45A MS COLUMBIA USERRECORD01 APP

Percent new IX = 0.2223%

Result key: 4
 Scenario 4 Affected station 2 WMAW-TV
 Before Analysis

Results for: 44A MS MERIDIAN BPEDT 20000501AHT CP
 HAAT 369.0 m, ATV ERP 880.0 kW

	POPULATION	AREA (sq km)
within Noise Limited Contour	669551	32160.0
not affected by terrain losses	660334	31867.5
lost to NTSC IX	0	0.0
lost to additional IX by ATV	15	2.9
lost to ATV IX only	15	2.9
lost to all IX	15	2.9

Potential Interfering Stations Included in above Scenario 4

45A MS HOUSTON DTVPLN DTVP1616 PLN

After Analysis

Results for: 44A MS MERIDIAN BPEDT 20000501AHT CP
 HAAT 369.0 m, ATV ERP 880.0 kW

	POPULATION	AREA (sq km)
within Noise Limited Contour	669551	32160.0
not affected by terrain losses	660334	31867.5
lost to NTSC IX	0	0.0
lost to additional IX by ATV	1483	102.1
lost to ATV IX only	1483	102.1
lost to all IX	1483	102.1

Potential Interfering Stations Included in above Scenario 4

45A MS HOUSTON DTVPLN DTVP1616 PLN
 45A MS COLUMBIA USERRECORD01 APP

Percent new IX = 0.2223%

Worst case new IX 0.2223% Scenario 1

#####

Analysis of Interference to Affected Station 3

Analysis of current record

Channel	Call	City/State	Application	Ref. No.
45	WJTC	PENSACOLA FL	BLCDT	-20021025ABG

Stations Potentially Affecting This Station

Chan	Call	City/State	Dist(km)	Status	Application	Ref. No.
44	WMAW-TV	MERIDIAN MS	226.0	CP	BPEDT	-20000501AHT
44	WMAW-TV	MERIDIAN MS	226.0	PLN	DTVPLN	-DTVP1580
45	WPXH-TV	GADSDEN AL	381.0	LIC	BLCDT	-20020510AAL
45	WPXH	GADSDEN AL	381.0	PLN	DTVPLN	-DTVP1598

45	WGMB-TV	BATON ROUGE LA	357.9	LIC	BLCDDT	-20060103ACW
45	WGMB	BATON ROUGE LA	357.9	PLN	DTVPLN	-DTVP1611
45	WKDH	HOUSTON MS	384.5	CP	BPCDDT	-20060519ABE
45	WKDH	HOUSTON MS	384.5	PLN	DTVPLN	-DTVP1616
45	W45AA PR	COLUMBIA MS	230.0	APP	USERRECORD-01	

Proposal causes no interference

#####

Analysis of Interference to Affected Station 4

Analysis of current record

Channel	Call	City/State	Application	Ref. No.
45	K45IY	ALEXANDRIA LA	BLTT	-20060502ADK

Stations Potentially Affecting This Station

Chan	Call	City/State	Dist(km)	Status	Application	Ref. No.
38	KMCT-TV	WEST MONROE LA	140.3	LIC	BLCDDT	-20071113ADI
38	KMCT-TV	WEST MONROE LA	140.3	PLN	DTVPLN	-DTVP1362
41	KBCA	ALEXANDRIA LA	44.0	CP MOD	BMPCDDT	-20080827AAE
41	KBCA	ALEXANDRIA LA	43.8	PLN	DTVPLN	-DTVP1469
44	K63HF	LAKE CHARLES LA	135.2	APP	BDISDTL	-20090824AFG
44	KVHP-LD	JASPER TX	151.0	LIC	BLDTL	-20091022ABR
44	KVHP-LD	JASPER TX	151.0	CP MOD	BMPDDL	-20091020ABD
45	KZTE-LP	FULTON AR	286.8	APP	BDISDTL	-20090403ACI
45	WGMB-TV	BATON ROUGE LA	152.6	LIC	BLCDDT	-20060103ACW
45	WGMB	BATON ROUGE LA	152.6	PLN	DTVPLN	-DTVP1611
45	K45HY	LAKE CHARLES LA	134.1	CP	BDFCDTL	-20090824AAZ
45	K45IM	MONROE LA	158.3	LIC	BLTT	-20050429ABX
45	KXLN-DT	ROSENBERG TX	350.0	CP MOD	BMPCDDT	-20080618ADX
45	KXLN-TV	ROSENBERG TX	350.0	PLN	DTVPLN	-DTVP1630
46	KLAF-LP	LAFAYETTE LA	122.0	CP	BDFCDTL	-20090505AAX
46	NEW	PORT ARTHUR TX	200.9	APP	BNPDDL	-20090825AXG
49	WNTZ-TV	NATCHEZ MS	83.8	LIC	BLCDDT	-20060630AAV
49	WNTZ	NATCHEZ MS	83.8	PLN	DTVPLN	-DTVP1741
60	K60GE	ALEXANDRIA LA	5.6	LIC	BLTTL	-20001219ABF
45	W45AA PR	COLUMBIA MS	247.7	APP	USERRECORD-01	

Proposal causes no interference

#####

Analysis of Interference to Affected Station 5

Analysis of current record

Channel	Call	City/State	Application	Ref. No.
45	WGMB-TV	BATON ROUGE LA	BLCDDT	-20060103ACW

Stations Potentially Affecting This Station

Chan	Call	City/State	Dist(km)	Status	Application	Ref. No.
45	WJTC	PENSACOLA FL	357.9	LIC	BLCDDT	-20021025ABG
45	WJTC	PENSACOLA FL	357.9	PLN	DTVPLN	-DTVP1604

45	KXLN-DT	ROSENBERG TX	416.4	CP MOD	BMPCDT	-20080618ADX
45	KXLN-TV	ROSENBERG TX	416.4	PLN	DTVPLN	-DTVP1630
45	W45AA PR	COLUMBIA MS	173.0	APP	USERRECORD-01	

Total scenarios = 4

Result key: 5
 Scenario 1 Affected station 5 WGMB-TV
 Before Analysis

Results for: 45A LA BATON ROUGE BLCDT 20060103ACW LIC
 HAAT 424.0 m, ATV ERP 1000.0 kW

	POPULATION	AREA (sq km)
within Noise Limited Contour	1567481	30372.4
not affected by terrain losses	1567426	30316.4
lost to NTSC IX	0	0.0
lost to additional IX by ATV	5	4.0
lost to ATV IX only	5	4.0
lost to all IX	5	4.0

Potential Interfering Stations Included in above Scenario 1

45A FL PENSACOLA BLCDT 20021025ABG LIC

After Analysis

Results for: 45A LA BATON ROUGE BLCDT 20060103ACW LIC
 HAAT 424.0 m, ATV ERP 1000.0 kW

	POPULATION	AREA (sq km)
within Noise Limited Contour	1567481	30372.4
not affected by terrain losses	1567426	30316.4
lost to NTSC IX	0	0.0
lost to additional IX by ATV	41	13.0
lost to ATV IX only	41	13.0
lost to all IX	41	13.0

Potential Interfering Stations Included in above Scenario 1

45A FL PENSACOLA BLCDT 20021025ABG LIC
 45A MS COLUMBIA USERRECORD01 APP

Percent new IX = 0.0023%

Result key: 6
 Scenario 2 Affected station 5 WGMB-TV
 Before Analysis

Results for: 45A LA BATON ROUGE BLCDT 20060103ACW LIC
 HAAT 424.0 m, ATV ERP 1000.0 kW

	POPULATION	AREA (sq km)
within Noise Limited Contour	1567481	30372.4
not affected by terrain losses	1567426	30316.4
lost to NTSC IX	0	0.0
lost to additional IX by ATV	5	4.0
lost to ATV IX only	5	4.0
lost to all IX	5	4.0

Potential Interfering Stations Included in above Scenario 2

45A FL PENSACOLA DTVPLN DTVP1604 PLN

After Analysis

Results for: 45A LA BATON ROUGE BLCDT 20060103ACW LIC
 HAAT 424.0 m, ATV ERP 1000.0 kW

	POPULATION	AREA (sq km)
within Noise Limited Contour	1567481	30372.4
not affected by terrain losses	1567426	30316.4
lost to NTSC IX	0	0.0
lost to additional IX by ATV	41	13.0
lost to ATV IX only	41	13.0
lost to all IX	41	13.0

Potential Interfering Stations Included in above Scenario 2

45A FL PENSACOLA DTVPLN DTVP1604 PLN
 45A MS COLUMBIA USERRECORD01 APP

Percent new IX = 0.0023%

Result key: 7
 Scenario 3 Affected station 5 WGMB-TV
 Before Analysis

Results for: 45A LA BATON ROUGE BLCDT 20060103ACW LIC
 HAAT 424.0 m, ATV ERP 1000.0 kW

	POPULATION	AREA (sq km)
within Noise Limited Contour	1567481	30372.4
not affected by terrain losses	1567426	30316.4
lost to NTSC IX	0	0.0
lost to additional IX by ATV	5	4.0
lost to ATV IX only	5	4.0
lost to all IX	5	4.0

Potential Interfering Stations Included in above Scenario 3

45A FL PENSACOLA BLCDT 20021025ABG LIC

After Analysis

Results for: 45A LA BATON ROUGE BLCDT 20060103ACW LIC
 HAAT 424.0 m, ATV ERP 1000.0 kW

	POPULATION	AREA (sq km)
within Noise Limited Contour	1567481	30372.4
not affected by terrain losses	1567426	30316.4
lost to NTSC IX	0	0.0
lost to additional IX by ATV	41	13.0
lost to ATV IX only	41	13.0
lost to all IX	41	13.0

Potential Interfering Stations Included in above Scenario 3

45A FL PENSACOLA BLCDT 20021025ABG LIC

45A MS COLUMBIA USERRECORD01 APP

Percent new IX = 0.0023%

Result key: 8
Scenario 4 Affected station 5 WGMB-TV
Before Analysis

Results for: 45A LA BATON ROUGE BLCDT 20060103ACW LIC
HAAT 424.0 m, ATV ERP 1000.0 kW

	POPULATION	AREA (sq km)
within Noise Limited Contour	1567481	30372.4
not affected by terrain losses	1567426	30316.4
lost to NTSC IX	0	0.0
lost to additional IX by ATV	5	4.0
lost to ATV IX only	5	4.0
lost to all IX	5	4.0

Potential Interfering Stations Included in above Scenario 4

45A FL PENSACOLA DTVPLN DTVP1604 PLN

After Analysis

Results for: 45A LA BATON ROUGE BLCDT 20060103ACW LIC
HAAT 424.0 m, ATV ERP 1000.0 kW

	POPULATION	AREA (sq km)
within Noise Limited Contour	1567481	30372.4
not affected by terrain losses	1567426	30316.4
lost to NTSC IX	0	0.0
lost to additional IX by ATV	41	13.0
lost to ATV IX only	41	13.0
lost to all IX	41	13.0

Potential Interfering Stations Included in above Scenario 4

45A FL PENSACOLA DTVPLN DTVP1604 PLN
45A MS COLUMBIA USERRECORD01 APP

Percent new IX = 0.0023%

Worst case new IX 0.0023% Scenario 1

#####

Analysis of Interference to Affected Station 6

Analysis of current record

Channel	Call	City/State	Application Ref. No.
45	K45HY	LAKE CHARLES LA	BDFCDTL -20090824AAZ

Stations Potentially Affecting This Station

Chan	Call	City/State	Dist(km)	Status	Application Ref. No.
44	K63HF	LAKE CHARLES LA	1.3	APP	BDISDTL -20090824AFG

44	KVHP-LD	JASPER TX	105.1	LIC	BLDTL	-20091022ABR
44	KVHP-LD	JASPER TX	105.1	CP MOD	BMPDTL	-20091020ABD
45	KZTE-LP	FULTON AR	360.6	APP	BDISDTL	-20090403ACI
45	WGMB-TV	BATON ROUGE LA	189.0	LIC	BLCDDT	-20060103ACW
45	WGMB	BATON ROUGE LA	189.0	PLN	DTVPLN	-DTVP1611
45	K45DI	MERMENTAU LA	60.8	LIC	BLTT	-19931025IC
45	KHPB-CA	BASTROP TX	382.1	CP	BDFCDTA	-20060330ACV
45	KXLN-DT	ROSENBERG TX	232.2	CP MOD	BMPCDT	-20080618ADX
45	KXLN-TV	ROSENBERG TX	232.2	PLN	DTVPLN	-DTVP1630
45	KVTX-LP	VICTORIA TX	407.6	CP	BDFCDTL	-20080804ADY
46	KLAF-LP	LAFAYETTE LA	111.9	CP	BDFCDTL	-20090505AAX
46	NEW	SULPHUR LA	13.2	APP	BNPTTL	-20000828BGQ
46	NEW	PORT ARTHUR TX	71.0	APP	BNPDTL	-20090825AXG
45	W45AA PR	COLUMBIA MS	343.9	APP	USERRECORD-01	

Proposal causes no interference

#####

Analysis of Interference to Affected Station 7

Analysis of current record

Channel	Call	City/State	Application	Ref. No.
45	K45HY	LAKE CHARLES LA	BLTTL	-20070316ACZ

Stations Potentially Affecting This Station

Chan	Call	City/State	Dist(km)	Status	Application	Ref. No.
41	KBCA	ALEXANDRIA LA	92.4	CP MOD	BMPCDT	-20080827AAE
41	KBCA	ALEXANDRIA LA	92.7	PLN	DTVPLN	-DTVP1469
44	K63HF	LAKE CHARLES LA	0.0	APP	BDISDTL	-20090824AFG
44	KVHP-LD	JASPER TX	106.0	LIC	BLDTL	-20091022ABR
44	KVHP-LD	JASPER TX	106.0	CP MOD	BMPDTL	-20091020ABD
45	KZTE-LP	FULTON AR	361.8	APP	BDISDTL	-20090403ACI
45	WGMB-TV	BATON ROUGE LA	189.1	LIC	BLCDDT	-20060103ACW
45	WGMB	BATON ROUGE LA	189.1	PLN	DTVPLN	-DTVP1611
45	K45DI	MERMENTAU LA	60.6	LIC	BLTT	-19931025IC
45	KHPB-CA	BASTROP TX	382.0	CP	BDFCDTA	-20060330ACV
45	KAZP-LP	PORT ARTHUR TX	84.0	LIC	BLTTL	-20090416ATV
45	KXLN-DT	ROSENBERG TX	231.8	CP MOD	BMPCDT	-20080618ADX
45	KXLN-TV	ROSENBERG TX	231.8	PLN	DTVPLN	-DTVP1630
46	KLAF-LP	LAFAYETTE LA	111.8	CP	BDFCDTL	-20090505AAX
46	NEW	SULPHUR LA	12.8	APP	BNPTTL	-20000828BGQ
46	NEW	PORT ARTHUR TX	70.3	APP	BNPDTL	-20090825AXG
45	W45AA PR	COLUMBIA MS	344.4	APP	USERRECORD-01	

Proposed station is beyond the site to
nearest cell evaluation distance

#####

Analysis of Interference to Affected Station 8

Analysis of current record

Channel	Call	City/State	Application	Ref. No.
45	K45DI	MERMENTAU LA	BLTT	-19931025IC

Stations Potentially Affecting This Station

Chan	Call	City/State	Dist(km)	Status	Application	Ref. No.
41	KBCA	ALEXANDRIA LA	79.2	CP MOD	BMPCDT	-20080827AAE
41	KBCA	ALEXANDRIA LA	79.3	PLN	DTVPLN	-DTVP1469
44	K63HF	LAKE CHARLES LA	60.6	APP	BDISDTL	-20090824AFG
44	KVHP-LD	JASPER TX	157.3	LIC	BLDTL	-20091022ABR
44	KVHP-LD	JASPER TX	157.3	CP MOD	BMPDTL	-20091020ABD
45	KZTE-LP	FULTON AR	386.9	APP	BDISDTL	-20090403ACI
45	WGMB-TV	BATON ROUGE LA	129.9	LIC	BLCDT	-20060103ACW
45	WGMB	BATON ROUGE LA	129.9	PLN	DTVPLN	-DTVP1611
45	K45HY	LAKE CHARLES LA	60.8	CP	BDFCDTL	-20090824AAZ
45	K45HY	LAKE CHARLES LA	60.6	LIC	BLTTL	-20070316ACZ
45	KXLN-DT	ROSENBERG TX	287.1	CP MOD	BMPCDT	-20080618ADX
45	KXLN-TV	ROSENBERG TX	287.1	PLN	DTVPLN	-DTVP1630
46	KLAF-LP	LAFAYETTE LA	51.7	CP	BDFCDTL	-20090505AAX
46	NEW	PORT ARTHUR TX	124.0	APP	BNPDTL	-20090825AXG
45	W45AA PR	COLUMBIA MS	292.0	APP	USERRECORD-01	

Proposal causes no interference

#####

Analysis of Interference to Affected Station 9

Analysis of current record

Channel	Call	City/State	Application	Ref. No.
45	K45IM	MONROE LA	BLTT	-20050429ABX

Stations Potentially Affecting This Station

Chan	Call	City/State	Dist(km)	Status	Application	Ref. No.
38	KMCT-TV	WEST MONROE LA	18.1	LIC	BLCDT	-20071113ADI
38	KMCT-TV	WEST MONROE LA	18.1	PLN	DTVPLN	-DTVP1362
41	WUFY	VICKSBURG MS	142.7	PLN	DTVPLN	-DTVP1474
43	KEJB	EL DORADO AR	48.2	CP MOD	BMPCDT	-20080620AKK
43	KEJB	EL DORADO AR	48.3	PLN	DTVPLN	-DTVP1523
45	KZTE-LP	FULTON AR	204.9	APP	BDISDTL	-20090403ACI
45	K45IY	ALEXANDRIA LA	158.3	LIC	BLTT	-20060502ADK
45	WGMB-TV	BATON ROUGE LA	270.5	LIC	BLCDT	-20060103ACW
45	WGMB	BATON ROUGE LA	270.5	PLN	DTVPLN	-DTVP1611
45	K45HY	LAKE CHARLES LA	286.5	CP	BDFCDTL	-20090824AAZ
45	WKDH	HOUSTON MS	306.1	CP	BPCDT	-20060519ABE
45	WKDH	HOUSTON MS	306.1	PLN	DTVPLN	-DTVP1616
45	W50EA-D	MEMPHIS TN	333.8	CP	BDCCDTL	-20060907ABJ
46	NEW	MONROE LA	21.2	APP	BNPTTL	-20000831EKL
46	W46EE-D	GREENVILLE MS	130.2	CP	BDCCDTL	-20061004AAO
49	KKYK-DT	CAMDEN AR	89.0	CP	BPCDT	-20050224ABE
49	KKYK-DT	CAMDEN AR	89.0	PLN	DTVPLN	-DTVP1724
49	WNTZ-TV	NATCHEZ MS	116.3	LIC	BLCDT	-20060630AAV
49	WNTZ	NATCHEZ MS	116.3	PLN	DTVPLN	-DTVP1741
49	WNTZ-TV	NATCHEZ MS	140.9	APP	BMPCDT	-20011116ABJ
45	W45AA PR	COLUMBIA MS	263.0	APP	USERRECORD-01	

Proposal causes no interference

#####

Analysis of Interference to Affected Station 10

Analysis of current record

Channel	Call	City/State	Application	Ref. No.
45	WKDH	HOUSTON MS	BPCDT	-20060519ABE

Stations Potentially Affecting This Station

Chan	Call	City/State	Dist(km)	Status	Application	Ref. No.
44	WMAW-TV	MERIDIAN MS	184.1	CP	BPEDT	-20000501AHT
44	WMAW-TV	MERIDIAN MS	184.1	PLN	DTVPLN	-DTVP1580
45	WPXH-TV	GADSDEN AL	241.9	LIC	BLCDDT	-20020510AAL
45	WPXH	GADSDEN AL	241.9	PLN	DTVPLN	-DTVP1598
45	WJTC	PENSACOLA FL	384.5	LIC	BLCDDT	-20021025ABG
45	WJTC	PENSACOLA FL	384.5	PLN	DTVPLN	-DTVP1604
45	W45AA PR	COLUMBIA MS	289.5	APP	USERRECORD-01	

Proposal causes no interference

#####

Analysis of Interference to Affected Station 11

Analysis of current record

Channel	Call	City/State	Application	Ref. No.
46	WBXH-CA	BATON ROUGE LA	BLTTL	-19900410IC

Stations Potentially Affecting This Station

Chan	Call	City/State	Dist(km)	Status	Application	Ref. No.
42	KGLA-DT	HAMMOND LA	142.8	LIC	BLCDDT	-20070605ABE
42	KGLA-DT	HAMMOND LA	142.8	PLN	DTVPLN	-DTVP1502
43	WDSU	NEW ORLEANS LA	143.0	LIC	BLCDDT	-20080314ACM
43	WDSU	NEW ORLEANS LA	143.0	PLN	DTVPLN	-DTVP1536
45	WGMB-TV	BATON ROUGE LA	32.2	LIC	BLCDDT	-20060103ACW
45	WGMB	BATON ROUGE LA	32.2	PLN	DTVPLN	-DTVP1611
45	K45HY	LAKE CHARLES LA	196.3	CP	BDFCDTL	-20090824AAZ
46	WCTU-LD	PANAMA CITY FL	379.7	APP	BSTA	-20080429ABM
46	WCTU-LD	PENSACOLA FL	381.2	LIC	BLDTL	-20080522ABX
46	KLAF-LP	LAFAYETTE LA	92.8	LIC	BLTT	-19970515JC
46	KLAF-LP	LAFAYETTE LA	92.8	CP	BDFCDTL	-20090505AAX
46	W46EE-D	GREENVILLE MS	312.9	CP	BDCCDTL	-20061004AAO
46	NEW	PORT ARTHUR TX	264.4	APP	BNPDTL	-20090825AXG
47	K47DW	ALEXANDRIA LA	136.0	CP	BDFCDTT	-20090630ADR
47	K47JO	NEW ORLEANS LA	139.4	APP	BDFCDTL	-20091214ABF
49	WNTZ-TV	NATCHEZ MS	125.1	LIC	BLCDDT	-20060630AAV
49	WNTZ	NATCHEZ MS	125.1	PLN	DTVPLN	-DTVP1741
49	WNTZ-TV	NATCHEZ MS	143.6	APP	BMPCDT	-20011116ABJ
50	KLWB	NEW IBERIA LA	77.2	PLN	DTVPLN	-DTVP1768
50	KLWB	NEW IBERIA LA	76.1	CP MOD	BMPCDT	-20081229ABB

50	WPXL-TV	NEW ORLEANS	LA	139.4	LIC	BLCDT	-20040408ABR
50	WPXL	NEW ORLEANS	LA	139.4	PLN	DTVPLN	-DTVP1769
45	W45AA PR	COLUMBIA	MS	152.0	APP	USERRECORD-01	

Proposed station is beyond the site to
nearest cell evaluation distance

#####

Analysis of Interference to Affected Station 12

Analysis of current record

Channel	Call	City/State	Application Ref. No.
46	W46CW	JACKSON/BRANDON MS	BLTTL -20021017AAT

Stations Potentially Affecting This Station

Chan	Call	City/State	Dist(km)	Status	Application Ref. No.
44	WMAW-TV	MERIDIAN MS	102.9	CP	BPEDT -20000501AHT
44	WMAW-TV	MERIDIAN MS	102.9	PLN	DTVPLN -DTVP1580
46	W46DF	HAMILTON AL	271.0	CP	BDFCDTL -20080801ASM
46	WMCF-TV	MONTGOMERY AL	369.5	CP MOD	BMPCDT -20090323ADG
46	WMCF-TV	MONTGOMERY AL	369.6	PLN	DTVPLN -DTVP1632
46	WMCF-TV	MONTGOMERY AL	369.5	LIC	BLCDT -20060620ABX
46	WCTU-LD	PANAMA CITY FL	347.6	APP	BSTA -20080429ABM
46	WCTU-LD	PENSACOLA FL	348.6	LIC	BLDTL -20080522ABX
46	KLAF-LP	LAFAYETTE LA	307.6	CP	BDFCDTL -20090505AAX
46	W46EE-D	GREENVILLE MS	138.8	CP	BDCCDTL -20061004AAO
46	W46EF-D	MEMPHIS TN	310.9	CP	BDCCDTL -20061011AEN
49	WNTZ-TV	NATCHEZ MS	95.1	APP	BMPCDT -20011116ABJ
45	W45AA PR	COLUMBIA MS	131.8	APP	USERRECORD-01

Proposed station is beyond the site to
nearest cell evaluation distance

#####

Analysis of Interference to Affected Station 13

Analysis of current record

Channel	Call	City/State	Application Ref. No.
46	W46CL	MERIDIAN MS	BPTTL -20080430ADZ

Stations Potentially Affecting This Station

Chan	Call	City/State	Dist(km)	Status	Application Ref. No.
44	WMAW-TV	MERIDIAN MS	10.1	CP	BPEDT -20000501AHT
44	WMAW-TV	MERIDIAN MS	10.1	PLN	DTVPLN -DTVP1580
46	W46DF	HAMILTON AL	234.4	CP	BDFCDTL -20080801ASM
46	WHNT-TV	HUNTSVILLE AL	374.0	CP	BPCDT -20090313ABX
46	WHNT-TV	HUNTSVILLE AL	374.0	PLN	DTVPLN -DTVP1631
46	WHNT-DR	HUNTSVILLE AL	374.0	APP	BPRM -20080619ALW
46	WMCF-TV	MONTGOMERY AL	280.8	CP MOD	BMPCDT -20090323ADG

46	WMCN-TV	MONTGOMERY AL	280.8	PLN	DTVPLN	-DTVP1632
46	WMCN-TV	MONTGOMERY AL	280.8	LIC	BLCDDT	-20060620ABX
46	WCTU-LD	PANAMA CITY FL	263.4	APP	BSTA	-20080429ABM
46	WCTU-LD	PENSACOLA FL	264.3	LIC	BLDDTL	-20080522ABX
46	NEW	LA GRANGE GA	376.6	APP	BNPDDL	-20090825ARF
46	KLAF-LP	LAFAYETTE LA	353.5	CP	BDFCDDL	-20090505AAX
46	W46EE-D	GREENVILLE MS	220.3	CP	BDCCDDL	-20061004AAO
46	W46EF-D	MEMPHIS TN	340.1	CP	BDCCDDL	-20061011AEN
45	W45AA PR	COLUMBIA MS	120.5	APP	USERRECORD-01	

Proposal causes no interference

#####

Analysis of Interference to Affected Station 14

Analysis of current record

Channel	Call	City/State	Application Ref. No.
46	W46CL	MERIDIAN MS	BLTTL -20070828ACK

Stations Potentially Affecting This Station

Chan	Call	City/State	Dist(km)	Status	Application Ref. No.
44	WMAW-TV	MERIDIAN MS	10.1	CP	BPEDT -20000501AHT
44	WMAW-TV	MERIDIAN MS	10.1	PLN	DTVPLN -DTVP1580
46	W46DF	HAMILTON AL	234.4	CP	BDFCDDL -20080801ASM
46	WHNT-TV	HUNTSVILLE AL	374.0	CP	BPCDDT -20090313ABX
46	WHNT-TV	HUNTSVILLE AL	374.0	PLN	DTVPLN -DTVP1631
46	WHNT-DR	HUNTSVILLE AL	374.0	APP	BPRM -20080619ALW
46	WMCN-TV	MONTGOMERY AL	280.8	CP MOD	BMPCDDT -20090323ADG
46	WMCN-TV	MONTGOMERY AL	280.8	PLN	DTVPLN -DTVP1632
46	WMCN-TV	MONTGOMERY AL	280.8	LIC	BLCDDT -20060620ABX
46	WCTU-LD	PANAMA CITY FL	263.4	APP	BSTA -20080429ABM
46	WCTU-LD	PENSACOLA FL	264.3	LIC	BLDDTL -20080522ABX
46	NEW	LA GRANGE GA	376.6	APP	BNPDDL -20090825ARF
46	KLAF-LP	LAFAYETTE LA	353.5	CP	BDFCDDL -20090505AAX
46	W46EE-D	GREENVILLE MS	220.3	CP	BDCCDDL -20061004AAO
46	W46EF-D	MEMPHIS TN	340.1	CP	BDCCDDL -20061011AEN
45	W45AA PR	COLUMBIA MS	120.5	APP	USERRECORD-01

Proposal causes no interference

#####

Analysis of Interference to Affected Station 15

Analysis of current record

Channel	Call	City/State	Application Ref. No.
47	K47JO	NEW ORLEANS LA	BLTT -20060828AFG

Stations Potentially Affecting This Station

Chan	Call	City/State	Dist(km)	Status	Application Ref. No.
39	WLOX-DR	BILOXI MS	126.5	APP	BPRM -20090710AUS
39	WLOX	BILOXI MS	126.5	PLN	DTVPLN -DTVP1405

39	WLOX	BILOXI MS	126.5	CP	BPCDT	-20090930AGN
43	WDSU	NEW ORLEANS LA	7.3	LIC	BLCDDT	-20080314ACM
43	WDSU	NEW ORLEANS LA	7.3	PLN	DTVPLN	-DTVP1536
45	WGMB-TV	BATON ROUGE LA	128.6	LIC	BLCDDT	-20060103ACW
45	WGMB	BATON ROUGE LA	128.6	PLN	DTVPLN	-DTVP1611
46	KLAF-LP	LAFAYETTE LA	200.7	CP	BDFCDTL	-20090505AAX
47	K47DW	ALEXANDRIA LA	275.4	CP	BDFCDTT	-20090630ADR
47	W47BP	HATTIESBURG MS	168.4	CP	BPTT	-20081118ABV
48	K48IT	BATON ROUGE LA	128.6	APP	BDFCDTT	-20060331ARI
48	WXXV-TV	GULFPORT MS	130.5	CP	BPCDT	-19991014ABJ
48	WXXV-TV	GULFPORT MS	130.5	PLN	DTVPLN	-DTVP1708
50	WPXL-TV	NEW ORLEANS LA	0.0	LIC	BLCDDT	-20040408ABR
50	WPXL	NEW ORLEANS LA	0.0	PLN	DTVPLN	-DTVP1769
45	W45AA PR	COLUMBIA MS	150.9	APP	USERRECORD-01	

Proposed station is beyond the site to
nearest cell evaluation distance

#####

Analysis of Interference to Affected Station 16

Analysis of current record

Channel	Call	City/State	Application	Ref. No.
47	W47BP	HATTIESBURG MS	BSTA	-20090116ABE

Stations Potentially Affecting This Station

Chan	Call	City/State	Dist(km)	Status	Application	Ref. No.
39	WLOX-DR	BILOXI MS	71.8	APP	BPRM	-20090710AUS
39	WLOX	BILOXI MS	71.8	PLN	DTVPLN	-DTVP1405
39	WLOX	BILOXI MS	71.8	CP	BPCDT	-20090930AGN
40	WDBD	JACKSON MS	136.2	CP	BPCDT	-20080401ATJ
40	WDBD	JACKSON MS	136.2	PLN	DTVPLN	-DTVP1437
44	WMAW-TV	MERIDIAN MS	97.2	CP	BPEDT	-20000501AHT
44	WMAW-TV	MERIDIAN MS	97.2	PLN	DTVPLN	-DTVP1580
47	NEW	MARIANNA FL	398.4	APP	BNPDTL	-20090825AXB
47	WPCT	PANAMA CITY BEACH FL	369.0	APP	BPCDT	-20090609ABW
47	WPCT	PANAMA CITY BEACH FL	369.0	PLN	DTVPLN	-DTVP1665
47	WPCT	PANAMA CITY BEACH FL	369.0	LIC	BLCDDT	-20030613AAG
47	K47DW	ALEXANDRIA LA	287.5	CP	BDFCDTT	-20090630ADR
47	K47JO	NEW ORLEANS LA	164.9	APP	BDFCDTL	-20091214ABF
47	K47JO	NEW ORLEANS LA	164.9	LIC	BLTT	-20060828AFG
48	WXXV-TV	GULFPORT MS	70.9	CP	BPCDT	-19991014ABJ
48	WXXV-TV	GULFPORT MS	70.9	PLN	DTVPLN	-DTVP1708
51	WWJX	JACKSON MS	139.5	APP	BPCDT	-20090929ADE
51	WWJX	JACKSON MS	139.8	PLN	DTVPLN	-DTVP1801
51	WWJX	JACKSON MS	120.7	CP MOD	BMPCDT	-20090724AAL
45	W45AA PR	COLUMBIA MS	40.1	APP	USERRECORD-01	

Proposal causes no interference

#####

Analysis of Interference to Affected Station 17

Analysis of current record

Channel	Call	City/State	Application	Ref. No.
47	W47BP	HATTIESBURG MS	BLTT	-19930519IB

Stations Potentially Affecting This Station

Chan	Call	City/State	Dist(km)	Status	Application	Ref. No.
39	WLOX-DR	BILOXI MS	74.7	APP	BPRM	-20090710AUS
39	WLOX	BILOXI MS	74.6	PLN	DTVPLN	-DTVP1405
39	WLOX	BILOXI MS	74.7	CP	BPCDT	-20090930AGN
40	WDBD	JACKSON MS	135.5	CP	BPCDT	-20080401ATJ
40	WDBD	JACKSON MS	135.5	PLN	DTVPLN	-DTVP1437
44	WMAW-TV	MERIDIAN MS	91.4	CP	BPEDT	-20000501AHT
44	WMAW-TV	MERIDIAN MS	91.4	PLN	DTVPLN	-DTVP1580
47	NEW	MARIANNA FL	395.0	APP	BNPDTL	-20090825AXB
47	WPCT	PANAMA CITY BEACH FL	366.7	APP	BPCDT	-20090609ABW
47	WPCT	PANAMA CITY BEACH FL	366.7	PLN	DTVPLN	-DTVP1665
47	WPCT	PANAMA CITY BEACH FL	366.7	LIC	BLCDDT	-20030613AAG
47	K47DW	ALEXANDRIA LA	291.7	CP	BDFCDTT	-20090630ADR
47	K47JO	NEW ORLEANS LA	170.9	APP	BDFCDTL	-20091214ABF
47	K47JO	NEW ORLEANS LA	170.9	LIC	BLTT	-20060828AFG
48	WXXV-TV	GULFPORT MS	73.4	CP	BPCDT	-19991014ABJ
48	WXXV-TV	GULFPORT MS	73.4	PLN	DTVPLN	-DTVP1708
51	WWJX	JACKSON MS	138.7	APP	BPCDT	-20090929ADE
51	WWJX	JACKSON MS	139.0	PLN	DTVPLN	-DTVP1801
51	WWJX	JACKSON MS	120.5	CP MOD	BMPCDT	-20090724AAL
45	W45AA PR	COLUMBIA MS	44.9	APP	USERRECORD-01	

Proposal causes no interference

#####

Analysis of Interference to Affected Station 18

Analysis of current record

Channel	Call	City/State	Application	Ref. No.
47	W47BP	HATTIESBURG MS	BPTT	-20081118ABV

Stations Potentially Affecting This Station

Chan	Call	City/State	Dist(km)	Status	Application	Ref. No.
39	WLOX-DR	BILOXI MS	75.6	APP	BPRM	-20090710AUS
39	WLOX	BILOXI MS	75.5	PLN	DTVPLN	-DTVP1405
39	WLOX	BILOXI MS	75.6	CP	BPCDT	-20090930AGN
40	WDBD	JACKSON MS	132.9	CP	BPCDT	-20080401ATJ
40	WDBD	JACKSON MS	132.9	PLN	DTVPLN	-DTVP1437
44	WMAW-TV	MERIDIAN MS	93.7	CP	BPEDT	-20000501AHT
44	WMAW-TV	MERIDIAN MS	93.7	PLN	DTVPLN	-DTVP1580
47	NEW	MARIANNA FL	399.4	APP	BNPDTL	-20090825AXB
47	WPCT	PANAMA CITY BEACH FL	370.7	APP	BPCDT	-20090609ABW
47	WPCT	PANAMA CITY BEACH FL	370.7	PLN	DTVPLN	-DTVP1665
47	WPCT	PANAMA CITY BEACH FL	370.7	LIC	BLCDDT	-20030613AAG
47	K47DW	ALEXANDRIA LA	287.1	CP	BDFCDTT	-20090630ADR
47	K47JO	NEW ORLEANS LA	168.4	APP	BDFCDTL	-20091214ABF

47	K47JO	NEW ORLEANS LA	168.4	LIC	BLTT	-20060828AFG
48	WXXV-TV	GULFPORT MS	74.5	CP	BPCDT	-19991014ABJ
48	WXXV-TV	GULFPORT MS	74.5	PLN	DTVPLN	-DTVP1708
51	WWJX	JACKSON MS	136.2	APP	BPCDT	-20090929ADE
51	WWJX	JACKSON MS	136.5	PLN	DTVPLN	-DTVP1801
51	WWJX	JACKSON MS	117.7	CP MOD	BMPCDT	-20090724AAL
45	W45AA PR	COLUMBIA MS	40.2	APP	USERRECORD-01	

Proposal causes no interference

#####

Analysis of Interference to Affected Station 19

Analysis of current record

Channel	Call	City/State	Application	Ref. No.
47	W47CG	MERIDIAN MS	BLTT	-20000317AAV

Stations Potentially Affecting This Station

Chan	Call	City/State	Dist(km)	Status	Application	Ref. No.
44	WMAW-TV	MERIDIAN MS	43.3	CP	BPEDT	-20000501AHT
44	WMAW-TV	MERIDIAN MS	43.3	PLN	DTVPLN	-DTVP1580
46	W46DF	HAMILTON AL	202.4	CP	BDFCDTL	-20080801ASM
47	WLGA	OPELIKA AL	367.4	CP MOD	BMPCDT	-20081219ADO
47	NEW	MARIANNA FL	367.2	APP	BNPDTL	-20090825AXB
47	WPCT	PANAMA CITY BEACH FL	365.2	APP	BPCDT	-20090609ABW
47	WPCT	PANAMA CITY BEACH FL	365.2	PLN	DTVPLN	-DTVP1665
47	WPCT	PANAMA CITY BEACH FL	365.2	LIC	BLCDT	-20030613AAG
47	K47DW	ALEXANDRIA LA	373.2	CP	BDFCDTT	-20090630ADR
47	K47JO	NEW ORLEANS LA	296.1	APP	BDFCDTL	-20091214ABF
47	W47BP	HATTIESBURG MS	129.3	CP	BPTT	-20081118ABV
47	WLJT	LEXINGTON TN	375.3	LIC	BLEDT	-20080219BJY
47	WLJT	LEXINGTON TN	375.3	PLN	DTVPLN	-DTVP1688
45	W45AA PR	COLUMBIA MS	159.8	APP	USERRECORD-01	

Proposed station is beyond the site to
nearest cell evaluation distance

#####

Analysis of Interference to Affected Station 20

Analysis of current record

Channel	Call	City/State	Application	Ref. No.
48	K48IT	BATON ROUGE LA	BLTT	-20070226AES

Stations Potentially Affecting This Station

Chan	Call	City/State	Dist(km)	Status	Application	Ref. No.
41	KBCA	ALEXANDRIA LA	144.1	CP MOD	BMPCDT	-20080827AAE
41	KBCA	ALEXANDRIA LA	143.9	PLN	DTVPLN	-DTVP1469
45	WGMB-TV	BATON ROUGE LA	0.0	LIC	BLCDT	-20060103ACW
45	WGMB	BATON ROUGE LA	0.0	PLN	DTVPLN	-DTVP1611

47	K47DW	ALEXANDRIA LA	152.6	CP	BDFCDTT	-20090630ADR
47	K47JO	NEW ORLEANS LA	128.6	APP	BDFCDTL	-20091214ABF
48	WXXV-TV	GULFPORT MS	217.4	CP	BPCDT	-19991014ABJ
48	WXXV-TV	GULFPORT MS	217.4	PLN	DTVPLN	-DTVP1708
48	KLNK-LP	LUFKIN TX	353.8	CP	BDFCDTL	-20090824ABC
50	KLWB	NEW IBERIA LA	67.1	PLN	DTVPLN	-DTVP1768
50	KLWB	NEW IBERIA LA	65.8	CP MOD	BMPCDT	-20081229ABB
50	WPXL-TV	NEW ORLEANS LA	128.6	LIC	BLCDDT	-20040408ABR
50	WPXL	NEW ORLEANS LA	128.6	PLN	DTVPLN	-DTVP1769
45	W45AA PR	COLUMBIA MS	173.1	APP	USERRECORD-01	

Proposed station is beyond the site to
nearest cell evaluation distance

#####

Analysis of Interference to Affected Station 21

Analysis of current record

Channel	Call	City/State	Application Ref. No.
49	WJXF-LP	JACKSON MS	BSTA -20090723AEN

Stations Potentially Affecting This Station

Chan	Call	City/State	Dist(km)	Status	Application Ref. No.
41	WUFY	VICKSBURG MS	17.9	CP	BPCDT -20080618ATF
41	WUFY	VICKSBURG MS	38.4	PLN	DTVPLN -DTVP1474
49	KKYK-DT	CAMDEN AR	257.3	CP	BPCDT -20050224ABE
49	KKYK-DT	CAMDEN AR	257.3	PLN	DTVPLN -DTVP1724
49	WAWD	FORT WALTON BEACH FL	377.1	CP MOD	BMPCDT -20080624ACF
49	W49DD-D	GREENWOOD MS	137.8	CP	BDCCDTL -20061003AEX
49	WNTZ-TV	NATCHEZ MS	155.4	LIC	BLCDDT -20060630AAV
49	WNTZ	NATCHEZ MS	155.4	PLN	DTVPLN -DTVP1741
49	WNTZ-TV	NATCHEZ MS	80.0	APP	BMPCDT -20011116ABJ
49	960920LX	TUPELO MS	238.6	APP	BMPCDT -20090205ABM
51	WWJX	JACKSON MS	17.9	APP	BPCDT -20090929ADE
51	WWJX	JACKSON MS	18.7	PLN	DTVPLN -DTVP1801
51	WWJX	JACKSON MS	28.4	CP MOD	BMPCDT -20090724AAL
64	WJKO-LP	JACKSON MS	7.0	LIC	BLTTL -19880621IB
45	W45AA PR	COLUMBIA MS	118.8	APP	USERRECORD-01

Proposed station is beyond the site to
nearest cell evaluation distance

#####

Analysis of Interference to Affected Station 22

Analysis of current record

Channel	Call	City/State	Application Ref. No.
49	WJXF-LP	JACKSON MS	BLTTL -19981106JC

Stations Potentially Affecting This Station

Chan	Call	City/State	Dist(km)	Status	Application	Ref. No.
41	WUFX	VICKSBURG MS	11.2	CP	BPCDT	-20080618ATF
41	WUFX	VICKSBURG MS	30.7	PLN	DTVPLN	-DTVP1474
49	KKYK-DT	CAMDEN AR	250.6	CP	BPCDT	-20050224ABE
49	KKYK-DT	CAMDEN AR	250.6	PLN	DTVPLN	-DTVP1724
49	WAWD	FORT WALTON BEACH FL	383.5	CP MOD	BMPCDT	-20080624ACF
49	W49DD-D	GREENWOOD MS	138.8	CP	BDCCDTL	-20061003AEX
49	WNTZ-TV	NATCHEZ MS	148.3	LIC	BLCDT	-20060630AAV
49	WNTZ	NATCHEZ MS	148.3	PLN	DTVPLN	-DTVP1741
49	WNTZ-TV	NATCHEZ MS	73.4	APP	BMPCDT	-20011116ABJ
49	960920LX	TUPELO MS	244.0	APP	BMPCDT	-20090205ABM
51	WWJX	JACKSON MS	10.4	APP	BPCDT	-20090929ADE
51	WWJX	JACKSON MS	11.2	PLN	DTVPLN	-DTVP1801
51	WWJX	JACKSON MS	25.7	CP MOD	BMPCDT	-20090724AAL
64	WJKO-LP	JACKSON MS	2.0	LIC	BLTTL	-19880621IB
45	W45AA PR	COLUMBIA MS	120.9	APP	USERRECORD-01	

Proposed station is beyond the site to
nearest cell evaluation distance

#####

Analysis of Interference to Affected Station 23

Analysis of current record

Channel	Call	City/State	Application	Ref. No.
52	W52CS	.MERIDIAN MS	BPTTL	-20071211ABQ

Stations Potentially Affecting This Station

Chan	Call	City/State	Dist(km)	Status	Application	Ref. No.
44	WMAW-TV	MERIDIAN MS	10.1	CP	BPEDT	-20000501AHT
44	WMAW-TV	MERIDIAN MS	10.1	PLN	DTVPLN	-DTVP1580
51	WWJX	JACKSON MS	114.9	APP	BPCDT	-20090929ADE
51	WWJX	JACKSON MS	115.6	PLN	DTVPLN	-DTVP1801
51	WWJX	JACKSON MS	110.7	CP MOD	BMPCDT	-20090724AAL
51	W69DJ	MERIDIAN MS	0.0	CP	BDISTTL	-20071207ACV
52	W26BR	GULFPORT MS	165.7	APP	BMPTTL	-20000711AAO
45	W45AA PR	COLUMBIA MS	120.5	APP	USERRECORD-01	

Proposed station is beyond the site to
nearest cell evaluation distance

#####

Analysis of Interference to Affected Station 24

Analysis of current record

Channel	Call	City/State	Application	Ref. No.
52	W26BR	GULFPORT MS	BMPTTL	-20000711AAO

Stations Potentially Affecting This Station

Chan	Call	City/State	Dist(km)	Status	Application	Ref. No.
48	WXXV-TV	GULFPORT MS	5.0	CP	BPCDT	-19991014ABJ
48	WXXV-TV	GULFPORT MS	5.0	PLN	DTVPLN	-DTVP1708
50	WFGX	FORT WALTON BEACH FL	138.1	CP MOD	BMPCDT	-20091019AFJ
50	WFGX	FORT WALTON BEACH FL	138.1	APP	BMPCDT	-20051108AFS
50	WPXL-TV	NEW ORLEANS LA	125.7	LIC	BLCDT	-20040408ABR
50	WPXL	NEW ORLEANS LA	125.7	PLN	DTVPLN	-DTVP1769
45	W45AA PR	COLUMBIA MS	94.5	APP	USERRECORD-01	

Proposed station is beyond the site to
nearest cell evaluation distance

#####

Analysis of Interference to Affected Station 25

Analysis of current record

Channel	Call	City/State	Application	Ref. No.
52	W52CS	MERIDIAN MS	BLTTL	-20070828ACT

Stations Potentially Affecting This Station

Chan	Call	City/State	Dist(km)	Status	Application	Ref. No.
44	WMAW-TV	MERIDIAN MS	10.1	CP	BPEDT	-20000501AHT
44	WMAW-TV	MERIDIAN MS	10.1	PLN	DTVPLN	-DTVP1580
51	WWJX	JACKSON MS	114.9	APP	BPCDT	-20090929ADE
51	WWJX	JACKSON MS	115.6	PLN	DTVPLN	-DTVP1801
51	WWJX	JACKSON MS	110.7	CP MOD	BMPCDT	-20090724AAL
51	W69DJ	MERIDIAN MS	0.0	CP	BDISTTL	-20071207ACV
52	W26BR	GULFPORT MS	165.7	APP	BMPTTL	-20000711AAO
45	W45AA PR	COLUMBIA MS	120.5	APP	USERRECORD-01	

Proposed station is beyond the site to
nearest cell evaluation distance

#####

Analysis of Interference to Affected Station 26

Analysis of current record

Channel	Call	City/State	Application	Ref. No.
53	WJMF-LP	JACKSON MS	BLTTL	-19981106JB

Stations Potentially Affecting This Station

Chan	Call	City/State	Dist(km)	Status	Application	Ref. No.
49	WNTZ-TV	NATCHEZ MS	73.4	APP	BMPCDT	-20011116ABJ
51	WWJX	JACKSON MS	10.4	APP	BPCDT	-20090929ADE
51	WWJX	JACKSON MS	11.2	PLN	DTVPLN	-DTVP1801
51	WWJX	JACKSON MS	25.7	CP MOD	BMPCDT	-20090724AAL
53	K53JU	MONROE LA	175.7	CP	BNPTTL	-20000831ANV
53	W53CS	TYLERTOWN MS	128.6	CP	BNPTTL	-20000831ARQ

45 W45AA PR COLUMBIA MS 120.9 APP USERRECORD-01

Proposed station is beyond the site to
nearest cell evaluation distance

#####

Analysis of Interference to Affected Station 27

Analysis of current record

Channel	Call	City/State	Application Ref. No.
53	W53CE	LAUREL MS	BLTTL -20041117ADS

Stations Potentially Affecting This Station

Chan	Call	City/State	Dist(km)	Status	Application Ref. No.
51	WWJX	JACKSON MS	127.0	APP	BPCDT -20090929ADE
51	WWJX	JACKSON MS	127.6	PLN	DTVPLN -DTVP1801
51	WWJX	JACKSON MS	114.8	CP MOD	BMPCDT -20090724AAL
53	WJMF-LP	JACKSON MS	120.4	LIC	BLTTL -19981106JB
53	W53CS	TYLERTOWN MS	110.1	CP	BNPTTL -20000831ARQ
68	W68DX	LAUREL MS	10.8	LIC	BLTTL -20071115ABL
45	W45AA PR	COLUMBIA MS	83.9	APP	USERRECORD-01

Proposed station is beyond the site to
nearest cell evaluation distance

#####

Analysis of Interference to Affected Station 28

Analysis of current record

Channel	Call	City/State	Application Ref. No.
53	W53CS	TYLERTOWN MS	BNPTTL -20000831ARQ

Stations Potentially Affecting This Station

Chan	Call	City/State	Dist(km)	Status	Application Ref. No.
49	WNTZ-TV	NATCHEZ MS	114.1	APP	BMPCDT -20011116ABJ
50	WPXL-TV	NEW ORLEANS LA	135.8	LIC	BLCDDT -20040408ABR
50	WPXL	NEW ORLEANS LA	135.8	PLN	DTVPLN -DTVP1769
51	WWJX	JACKSON MS	126.4	APP	BPCDT -20090929ADE
51	WWJX	JACKSON MS	126.3	PLN	DTVPLN -DTVP1801
51	WWJX	JACKSON MS	104.6	CP MOD	BMPCDT -20090724AAL
53	WJMF-LP	JACKSON MS	128.6	LIC	BLTTL -19981106JB
45	W45AA PR	COLUMBIA MS	26.5	APP	USERRECORD-01

Proposal causes no interference

#####

Analysis of Interference to Affected Station 29

Analysis of current record

Channel	Call	City/State	Application Ref. No.
45	W45AA PR	COLUMBIA MS	USERRECORD-01

Stations Potentially Affecting This Station

Chan	Call	City/State	Dist(km)	Status	Application Ref. No.
44	WMAW-TV	MERIDIAN MS	119.4	CP	BPEDT -20000501AHT
44	WMAW-TV	MERIDIAN MS	119.4	PLN	DTVPLN -DTVP1580
45	NEW	PANAMA CITY FL	425.9	APP	BNPDTL -20090825ASW
45	WJTC	PENSACOLA FL	230.0	LIC	BLCDDT -20021025ABG
45	WJTC	PENSACOLA FL	230.0	PLN	DTVPLN -DTVP1604
45	WGMB-TV	BATON ROUGE LA	173.0	LIC	BLCDDT -20060103ACW
45	WGMB	BATON ROUGE LA	173.0	PLN	DTVPLN -DTVP1611
45	K45HY	LAKE CHARLES LA	343.9	CP	BDFCDTL -20090824AAZ
45	WKDH	HOUSTON MS	289.5	CP	BPCDDT -20060519ABE
45	WKDH	HOUSTON MS	289.4	PLN	DTVPLN -DTVP1616

Total scenarios = 4

Result key: 9
 Scenario 1 Affected station 29 W45AA PR
 Before Analysis

Results for: 45A MS COLUMBIA USERRECORD01 APP

HAAT 69.0 m, ATV ERP 15.0 kW	POPULATION	AREA (sq km)
within Noise Limited Contour	67017	4436.7
not affected by terrain losses	67017	4436.7
lost to NTSC IX	0	0.0
lost to additional IX by ATV	1258	97.1
lost to ATV IX only	1258	97.1
lost to all IX	1258	97.1

Potential Interfering Stations Included in above Scenario 1

45A FL PENSACOLA	BLCDDT	20021025ABG	LIC
45A LA BATON ROUGE	BLCDDT	20060103ACW	LIC

Result key: 10
 Scenario 2 Affected station 29 W45AA PR
 Before Analysis

Results for: 45A MS COLUMBIA USERRECORD01 APP

HAAT 69.0 m, ATV ERP 15.0 kW	POPULATION	AREA (sq km)
within Noise Limited Contour	67017	4436.7
not affected by terrain losses	67017	4436.7
lost to NTSC IX	0	0.0
lost to additional IX by ATV	1258	97.1
lost to ATV IX only	1258	97.1
lost to all IX	1258	97.1

Potential Interfering Stations Included in above Scenario 2

45A FL PENSACOLA	BLCDT	20021025ABG	LIC
45A LA BATON ROUGE	DTVPLN	DTVP1611	PLN

Result key: 11
Scenario 3 Affected station 29 W45AA PR
Before Analysis

Results for: 45A MS COLUMBIA USERRECORD01 APP
HAAT 69.0 m, ATV ERP 15.0 kW

	POPULATION	AREA (sq km)
within Noise Limited Contour	67017	4436.7
not affected by terrain losses	67017	4436.7
lost to NTSC IX	0	0.0
lost to additional IX by ATV	1258	97.1
lost to ATV IX only	1258	97.1
lost to all IX	1258	97.1

Potential Interfering Stations Included in above Scenario 3

45A FL PENSACOLA	DTVPLN	DTVP1604	PLN
45A LA BATON ROUGE	BLCDT	20060103ACW	LIC

Result key: 12
Scenario 4 Affected station 29 W45AA PR
Before Analysis

Results for: 45A MS COLUMBIA USERRECORD01 APP
HAAT 69.0 m, ATV ERP 15.0 kW

	POPULATION	AREA (sq km)
within Noise Limited Contour	67017	4436.7
not affected by terrain losses	67017	4436.7
lost to NTSC IX	0	0.0
lost to additional IX by ATV	1258	97.1
lost to ATV IX only	1258	97.1
lost to all IX	1258	97.1

Potential Interfering Stations Included in above Scenario 4

45A FL PENSACOLA	DTVPLN	DTVP1604	PLN
45A LA BATON ROUGE	DTVPLN	DTVP1611	PLN

#####

FINISHED FINISHED FINISHED FINISHED FINISHED FINISHED