

EXHIBIT 13

Waiver Request of Section 74.1204

K211DC Sloan NV 10 Watts ERP

Minor Site Change

Calvary Chapel of Twin Falls, Inc.

June 2010

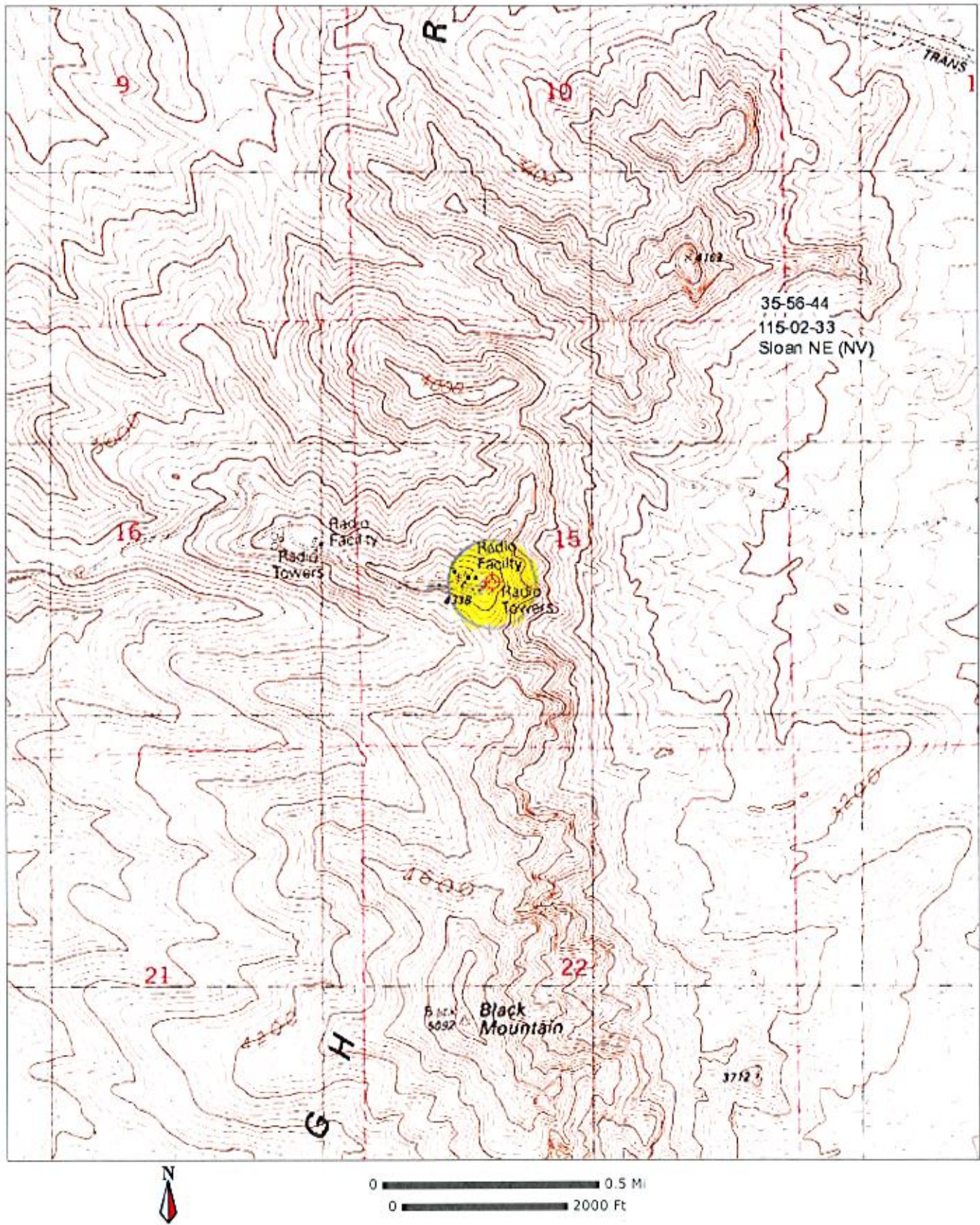
The proposed interference contour is contained entirely inside the service contour of second-adjacent FM stations KSOS Las Vegas and KCVN Las Vegas

KSOS

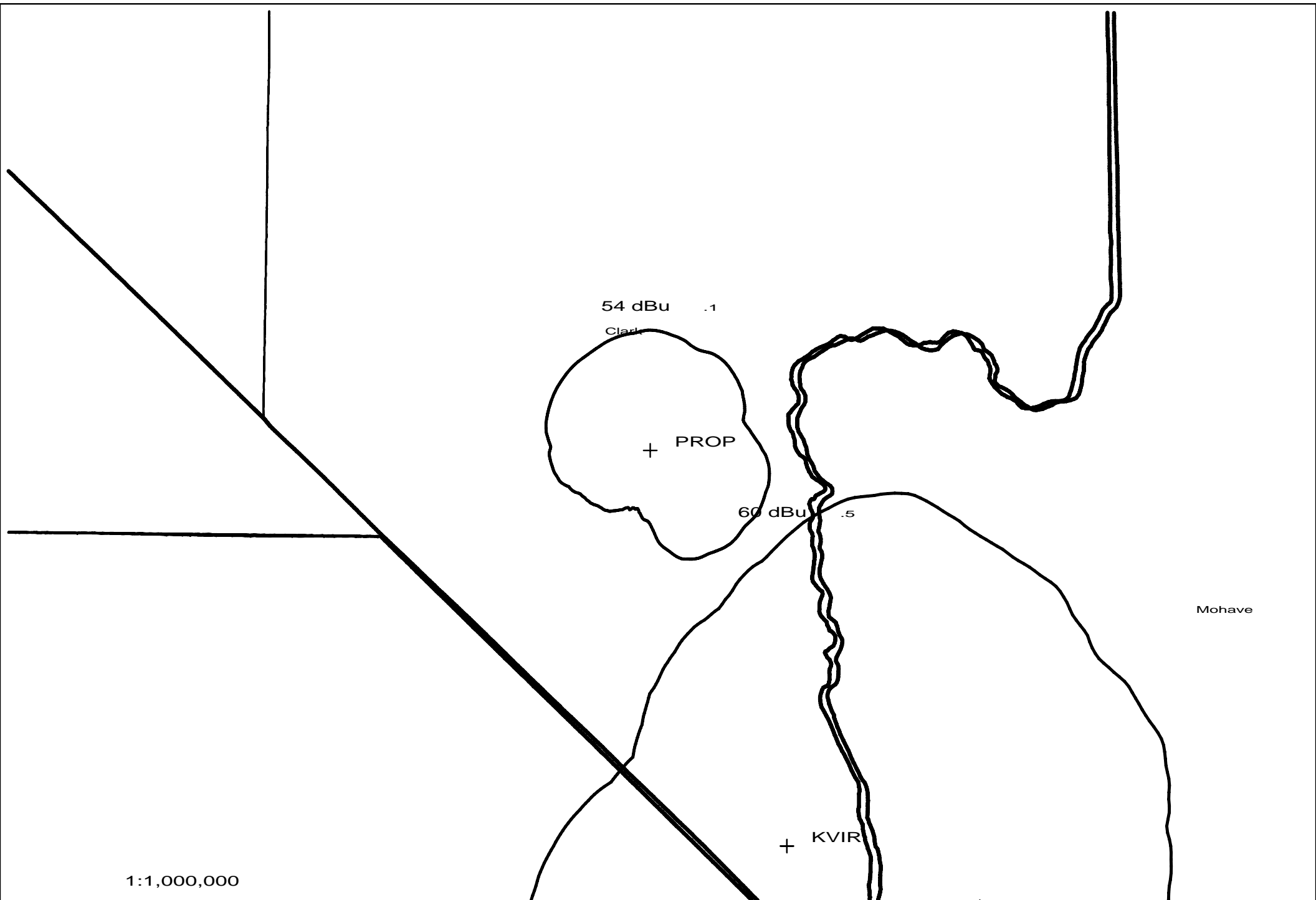
The proposed interference contour is contained inside the service contour of second-adjacent FM Station KSOS, 213C, 100kW Las Vegas, NV. The level of least arriving protected F(50,50) signal at the proposed transmitter site is 84.6dBu. Using the Undesired-to-Desired method for calculating proposed interference, the interfering contour is 124.6dBu(free-space contour method employed). The interfering signal would, in the worst case at the maximum radial, extend 15 meters from the center of radiation, which is proposed at 23 meters AGL. This interference contour does not touch the ground. This site is a communications site called Arden Peak, at which a number of towers are located. Attached is a portion of the USGS Sloan NE (VN) Quadrangle showing this tower is not located in a populated area and there are no residences, businesses or major roadways that are within the interference contour. Calvary Chapel of Twin Falls, Inc. respectfully requests a waiver of the FM translator contour overlap regulations with respect to second-adjacent FM Station KSOS Las Vegas.

KCVN

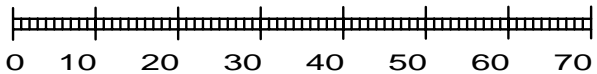
The proposed interference contour is contained inside the service contour of second-adjacent FM Station KCVN, 209C2, .55kW Las Vegas, NV. The level of least arriving protected F(50,50) signal at the proposed transmitter site is 63.8dBu. Using the Undesired-to-Desired method for calculating proposed interference, the interfering contour is 103.8dBu(free-space contour method employed). The interfering signal would, in the worst case at the maximum radial, extend 146 meters, or 479 feet from the base of the tower. This site is a communications site called Arden Peak, at which a number of towers are located. Attached is a portion of the USGS Sloan NE (VN) Quadrangle showing this tower is not located in a populated area and there are no residences, businesses or major roadways that are within the interference contour, marked in yellow. There are several boxes on the TOPO Map, all of which are equipment buildings for the existing towers. Attached also is a Google Earth Picture showing these towers and their equipment buildings. Calvary Chapel of Twin Falls, Inc. respectfully requests a waiver of the FM translator contour overlap regulations with respect to second-adjacent FM Station KCVN Las Vegas.





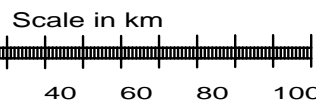
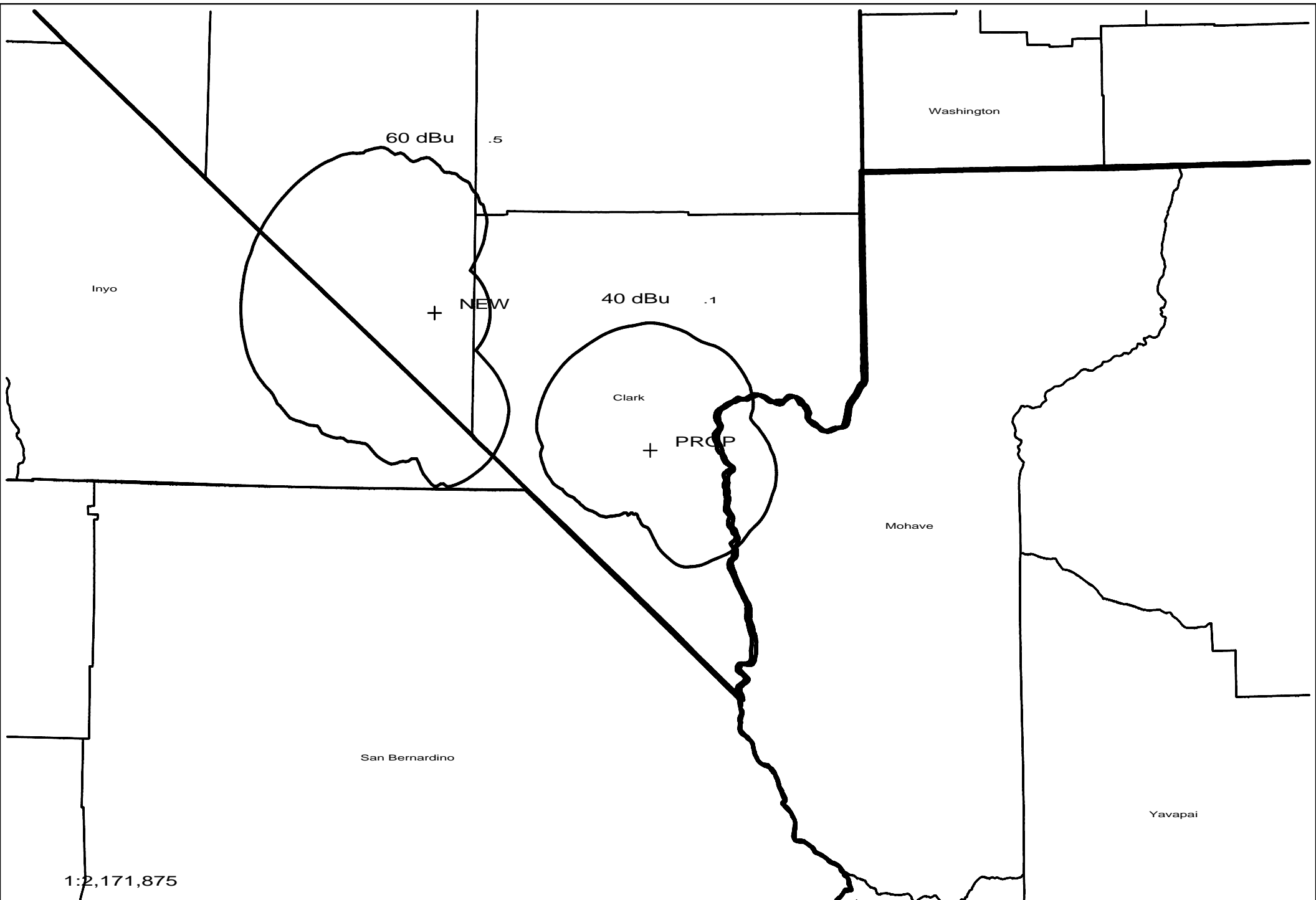


Scale in km



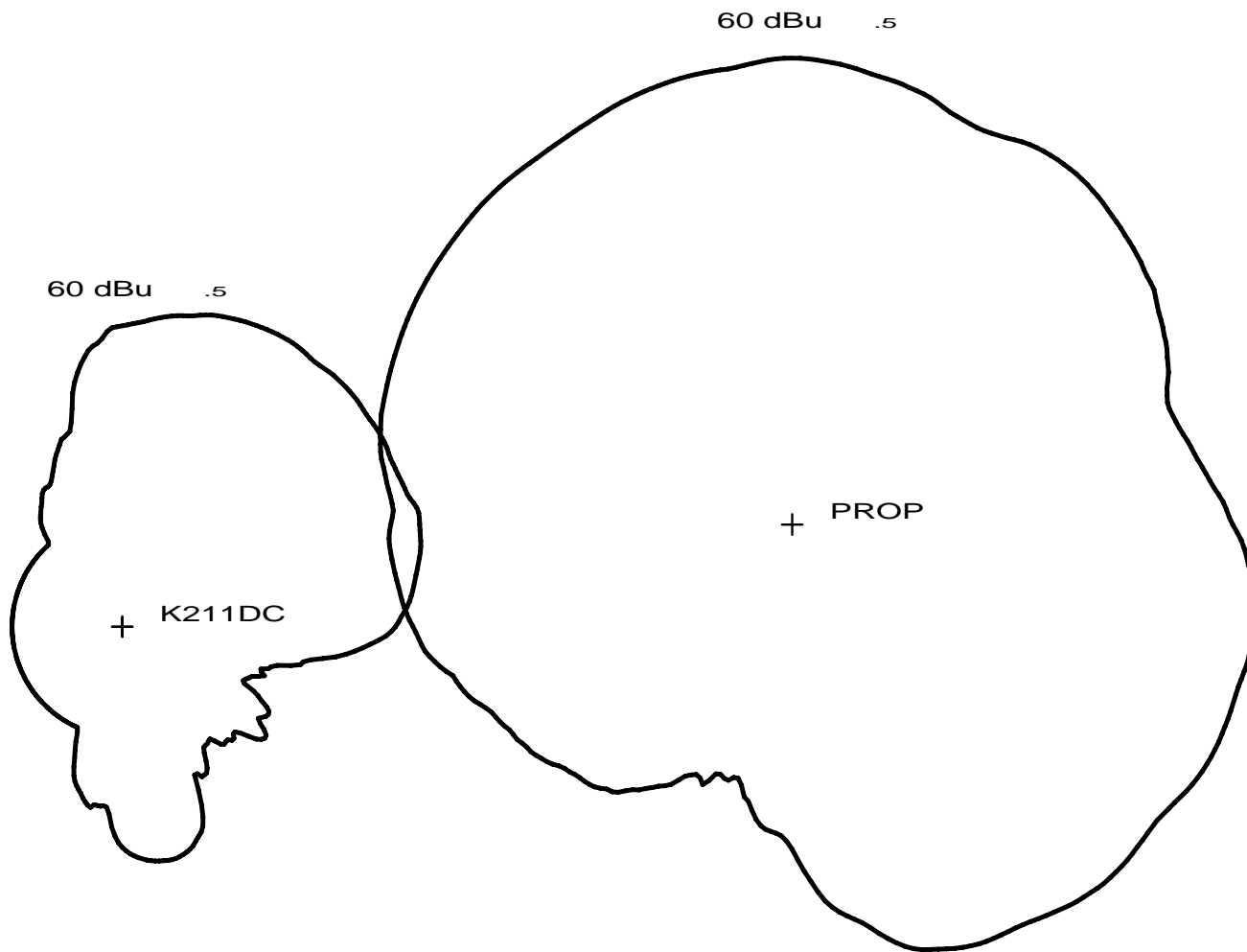
PROP 211D .01kW 1344M AMSL
N. Lat. 35 56 44 W. Lng. 115 02 33

KVIRprotection
CCTF - 06/10



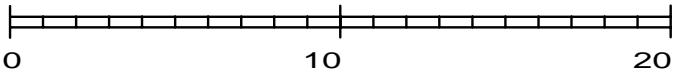
PROP 211D .01kW 1344M AMSL
N. Lat. 35 56 44 W. Lng. 115 02 33

cochannel
CCTF - 06/10



1:250,000

Scale in km



PROP 211D .01kW 1344M AMSL
N. Lat. 35 56 44 W. Lng. 115 02 33

Minor Change
CCTF - 06/10