

**August 2013
New FM Translator
Skamania, Washington Channel 243D
Allocation Study**

The attached spacing study shows the spacing between the proposed translator site and the location of cochannel and adjacent channel stations and proposals. This study was made with the Commission's Class A spacing requirements, and individual situations were examined to determine the lack of prohibited contour overlap per the requirements of §74.1204 of the Rules. The attached allocation study maps demonstrate compliance with the Commission's Rules for protection of FM broadcast stations and FM translators as outlined in §74.1204.

The proposed translator transmitter site is located within the 60 dBu protected contour of third-adjacent channel station KYCH-FM 246C Portland. The proposed site is 53.31 km from the KYCH-FM transmitter site at a bearing of 66 degrees True. Given the KYCH-FM antenna's 406 meter HAAT and 100 kW ERP along this radial, KYCH-FM places a 71.5 dBu contour at the translator transmitter site. The corresponding interfering contour from the translator is $71.5 + 40 = 111.5$ dBu. The attached map of the proposed transmitter site depicts the 111.5 dBu contour from the proposed facility, which extends at most 59 meters per a Free Space calculation. There is no population within this contour. Therefore, the proposed facility is believed to satisfy the requirements of §74.1204(d) with respect to KYCH-FM.

The attached spacing study demonstrates compliance with §73.207 of the Commission's Rules regarding spacing restrictions to stations which are 53 or 54 channels removed from the proposed operation.

LPFM Preclusion Study

There is no change from the technical facility proposed in the April 2013 short-form amendment. A copy of the April 2013 LPFM preclusion study is nevertheless included for reference.

=====

SEARCH PARAMETERS

FM Database Date: 130826

Channel: 243A 96.5 MHz
 Latitude: 45 41 2
 Longitude: 122 4 13
 Safety Zone: 50 km
 Job Title: SKAMANIA 243

Page 1

Call Status	City St	FCC File No.	Channel Freq.	ERP(kW) HAAT(m)	Latitude Longitude	Bearing deg-True	Dist (km)	Req (km)
K240CZ CP	TIGARD OR	BPFT-30604ABX	240D 95.9	0.099 385.0	45-30-58 122-43-59	250.3	54.97 0.00	0 TRANS
K240CZ LIC	TIGARD OR	BLFT-70208ACE	240D 95.9	0.019 385.0	45-30-58 122-43-59	250.3	54.97 0.00	0 TRANS
K240DA LIC	STEVENSON WA	BLFT-70406ABP	240D 95.9	0.090 241.0	45-43-27 121-53-11	72.5	15.00 0.00	0 TRANS
KXXO LIC	OLYMPIA WA	BLH-900308KB	241C 96.1	85.000 640.0	46-38-07 122-28-01	344.0	110.10 15.10	95 CLEAR
KXXOaux LIC	OLYMPIA WA	BXLH-80424ABN	241C 96.1	4.000 349.0	46-50-34 122-45-46	337.8	139.44 0.00	0 AUX
KQRZ-LP LIC	HILLSBORO OR	BLL-90209AGW	242L1 96.3	0.100 12.1	45-30-27 122-58-02	254.6	72.68 16.68	56 CLEAR
KKJC-LP LIC	MCMINNVILLE OR	BLL-30801BNR	242L1 96.3	0.100 17.0	45-09-39 123-09-14	235.9	102.82 46.82	56 CLEAR
KQSO-LP LIC	NEWBERG OR	BLL-90209AHN	242L1 96.3	0.001 343.3	45-21-18 122-59-18	243.2	80.51 24.51	56 CLEAR
K242AF LIC	PORTLAND OR	BLFT-31112AGM	242D 96.3	0.034 299.0	45-27-17 122-32-58	235.8	45.25 0.00	0 TRANS
K242AB LIC	SALEM OR	BLFT-70822ADS	242D 96.3	0.250 48.0	44-56-33 123-02-01	222.8	111.78 0.00	0 TRANS
K242AX LIC	THE DALLES OR	BLFT-20822ACD	242D 96.3	0.099 804.0	45-42-43 121-06-58	87.2	74.38 0.00	0 TRANS
KWLZ-FM RSV	WEST LINN OR	-	242C3 96.3	0.000 0.0	45-31-58 122-33-57	246.6	42.15 -46.85	89 SHORT
KWLZ-FM CP	WEST LINN OR	BPH-10823ABX	242C3 96.3	1.400 386.0	45-29-20 122-41-40	246.2 SS	53.31 -35.69	89 SHORT
K243BG LIC	CORVALLIS OR	BLFT-50930BMZ	243D 96.5	0.250 388.0	44-38-25 123-16-25	219.5	149.68 0.00	0 TRANS

=====

SEARCH PARAMETERS FM Database Date: 130826

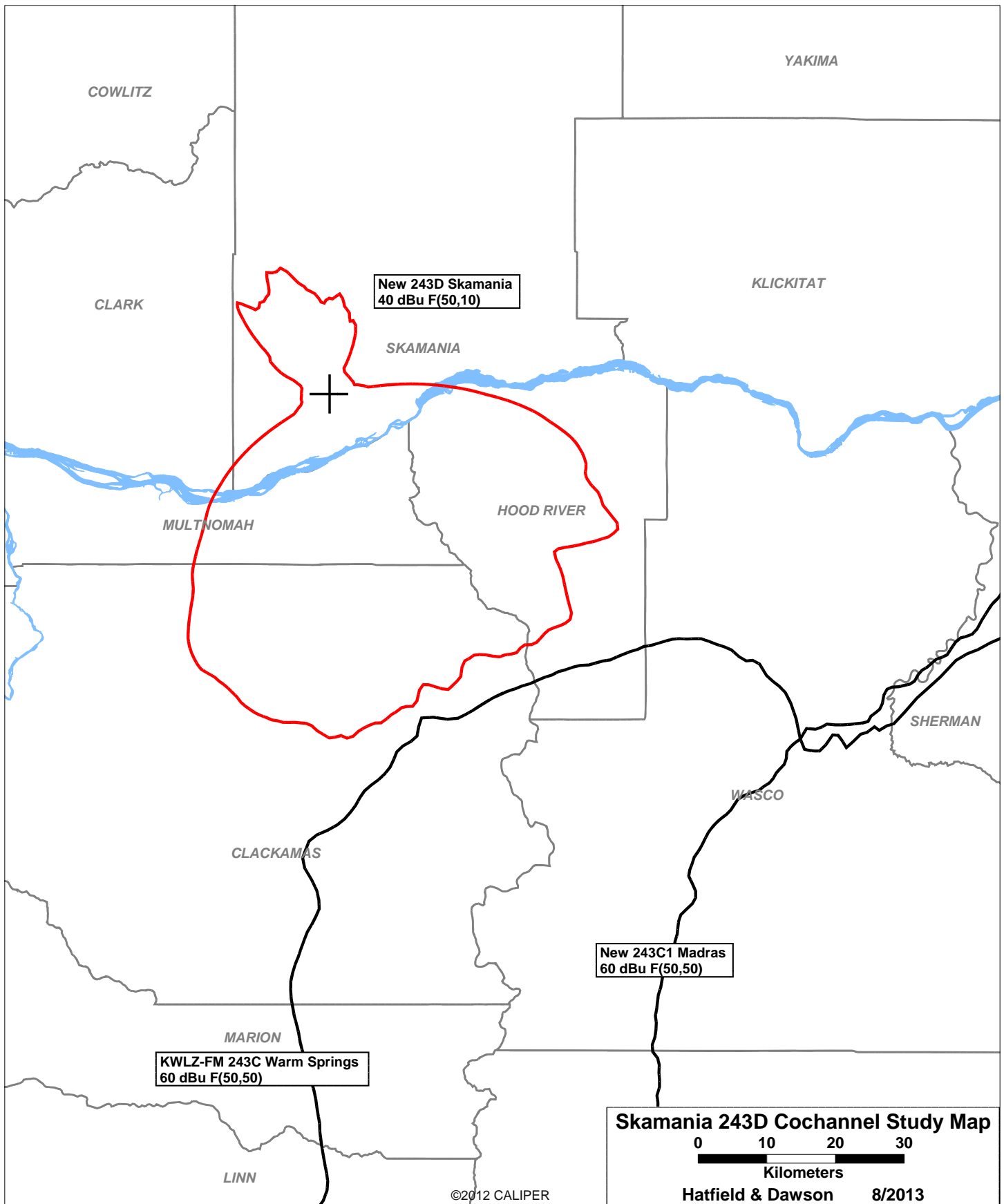
Channel: 243A 96.5 MHz
 Latitude: 45 41 2
 Longitude: 122 4 13
 Safety Zone: 50 km
 Job Title: SKAMANIA 243
 Page 2

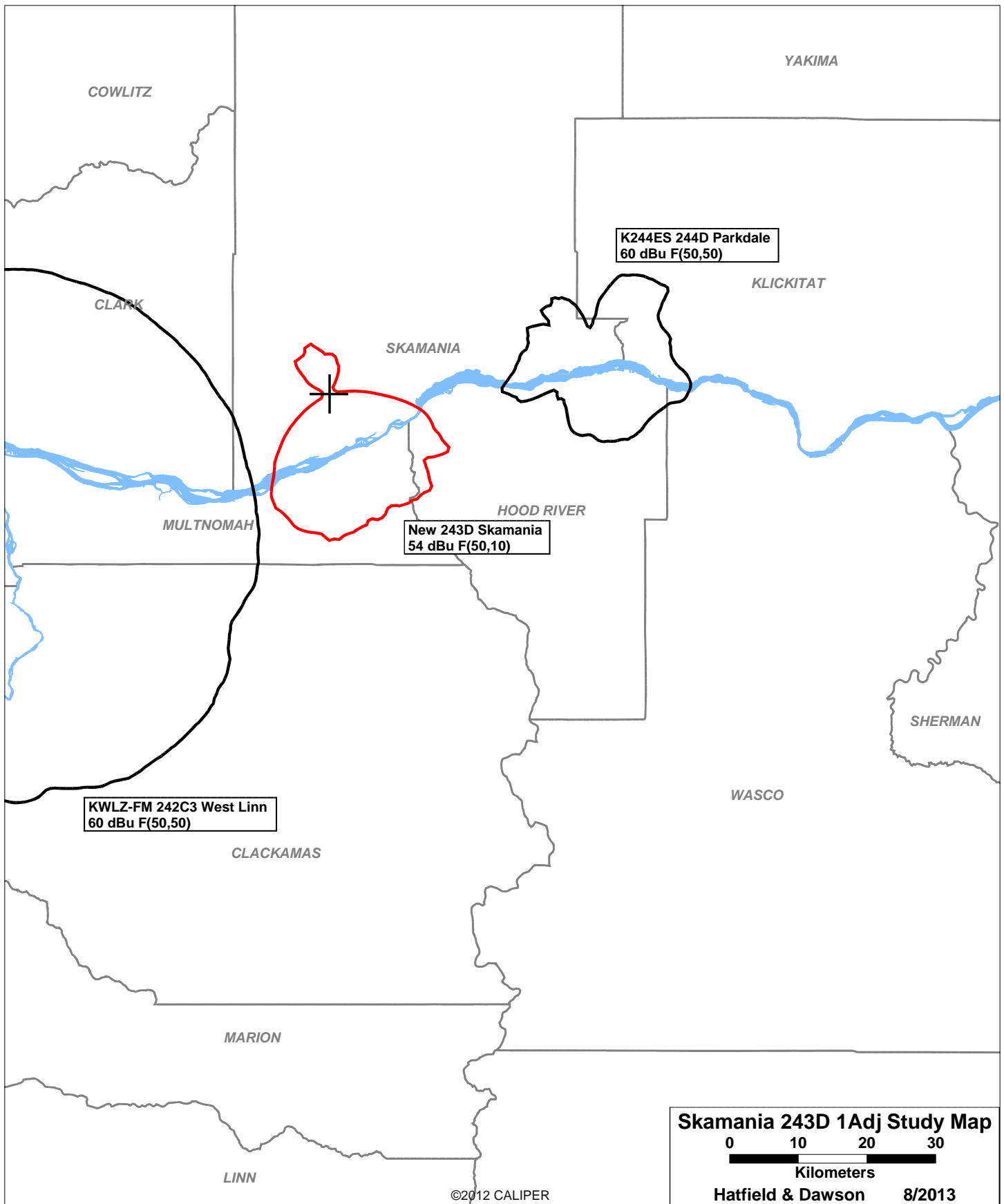
Call Status	City St	FCC File No.	Channel Freq.	ERP(kW) HAAT(m)	Latitude Longitude	Bearing deg-True	Dist (km)	Req (km)
VAC	MADRAS OR RM-11631	243C1 96.5	0.000 0.0	44-50-02 120-45-55	132.3	139.34 -60.66	200 SHORT	
ABSOLUTE MINIMUM 73.215 SPACING = 178 KM								
NEW CP	MADRAS OR BNPED-00226AJY	243C1 96.5	100.000 149.4	44-55-40 120-43-40	128.2	134.71 -65.29	200 SHORT	
ADD	SEASIDE OR RM-11631	243A 96.5	0.000 0.0	45-57-08 123-56-14	282.3	148.13 33.13	115 CLEAR	
KCYS LIC	SEASIDE OR BLH-21012ADF	243A 96.5	6.000 100.0	45-57-11 123-56-14	282.4	148.15 33.15	115 CLEAR	
KWLZ-FM LIC	WARM SPRINGS OR BLH-860127KG	243C 96.5	100.000 332.0	44-50-24 121-13-56	144.7	114.55 -111.45	226 SHORT	
KJAQaux LIC	SEATTLE WA BXMLH-70627ABN	243C 96.5	53.000 373.0	47-32-39 122-06-32	359.2	206.81 0.00	0 AUX	
KJAQ LIC	SEATTLE WA BLH-60710ABP	243C 96.5	52.000 696.0	47-30-17 121-58-03	2.2 SS	202.56 -23.44	226 SHORT	
NEW-T APP	SKAMANIA WA BNPFT-30313AAJ	243D 96.5	0.010 0.0	45-41-02 122-04-13	0.0	0.00 0.00	0 TRANS	
K244ES CP	PARKDALE OR BNPFT-30328ART	244D 96.7	0.010 732.0	45-44-31 121-34-43	80.2	38.82 0.00	0 TRANS	
NEW-T APP	ARIEL WA BNPFT-30317KKM	244D 96.7	0.002 546.0	46-00-59 122-46-28	304.4	66.01 0.00	0 TRANS	
NEW-T APP	ARIEL WA BNPFT-30823ACO	244D 96.7	0.002 578.0	46-00-59 122-46-28	304.4	66.01 0.00	0 TRANS	
K245AF LIC	THE DALLES OR BLFT-81104ABM	245D 96.9	0.099 222.0	45-37-24 121-05-33	94.7	76.51 0.00	0 TRANS	
KYCH-FM LIC	PORTLAND OR BLH-900821KA	246C 97.1	100.000 386.0	45-29-20 122-41-40	246.2	53.31 -41.69	95 SHORT	

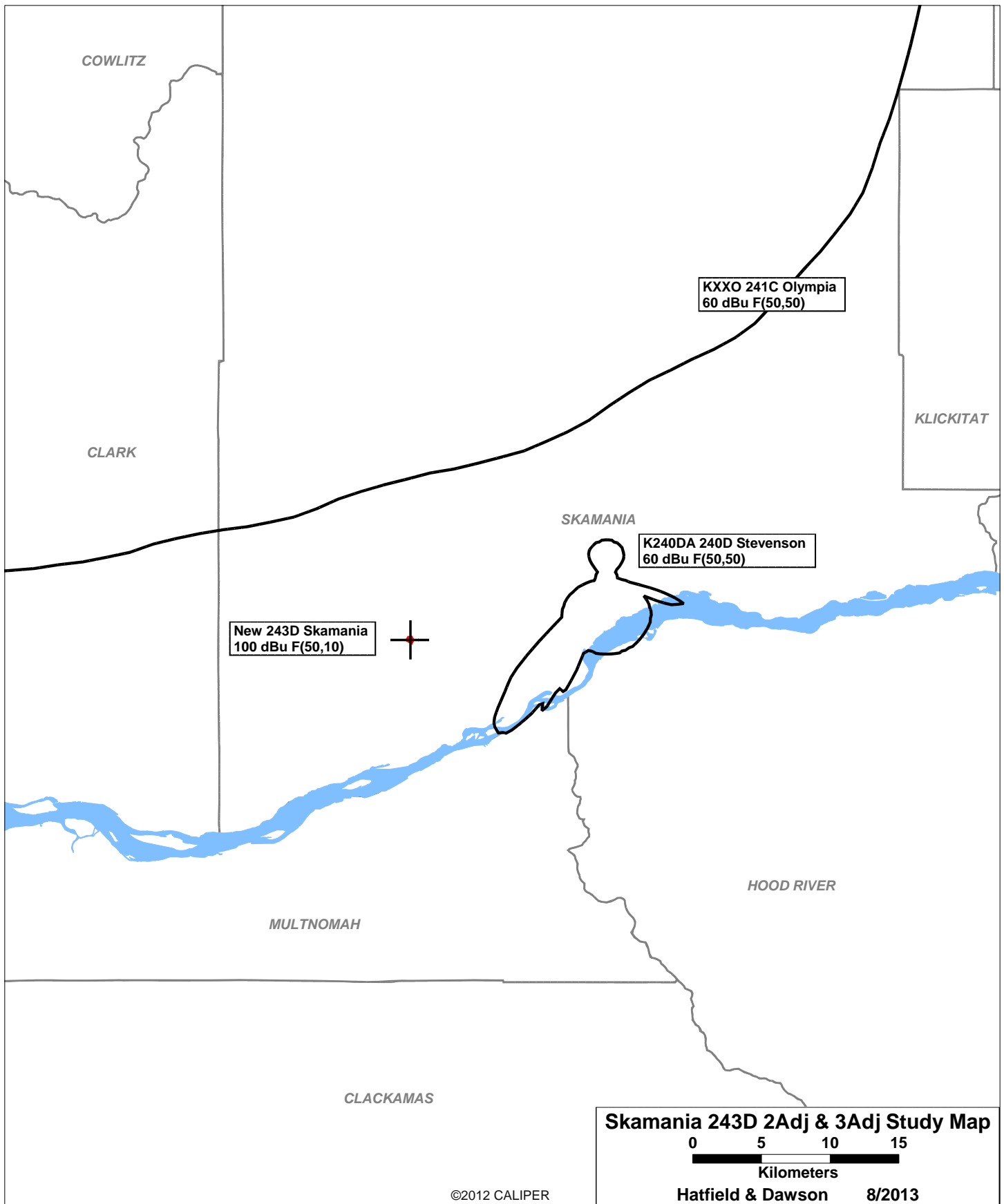
```
=====
SEARCH PARAMETERS                               FM Database Date: 130826
Channel: 243A      96.5 MHz                      Page 3
Latitude: 45 41 2
Longitude: 122 4 13
Safety Zone: 50 km
Job Title: SKAMANIA 243
```

Call Status	City St	FCC File No.	Channel Freq.	ERP(kW) HAAT(m)	Latitude Longitude	Bearing deg-True	Dist (km)	Req (km)
KYCHaux LIC	PORTLAND OR	BLH-950606KD	246C 97.1	40.000 305.0	45-29-20 122-41-40	246.2	53.31 0.00	0 AUX
NEW-T APP	DEE OR	BNPFT-30317LXJ	296D 107.1	0.010 1342.0	45-38-56 121-43-18	98.1	27.44 0.00	0 TRANS
K296FT LIC	WEST HAVEN OR	BLFT-80116AAA	296D 107.1	0.028 312.0	45-29-20 122-41-40	246.2	53.31 0.00	0 TRANS

===== END OF FM SPACING STUDY FOR CHANNEL 243 =====







COWLITZ

CLARK

KLICKITAT

SKAMANIA

New 243D Skamania
100 dBu F(50,10)

KXXO 241C Olympia
60 dBu F(50,50)

K240DA 240D Stevenson
60 dBu F(50,50)

MULTNOMAH

CLACKAMAS

HOOD RIVER

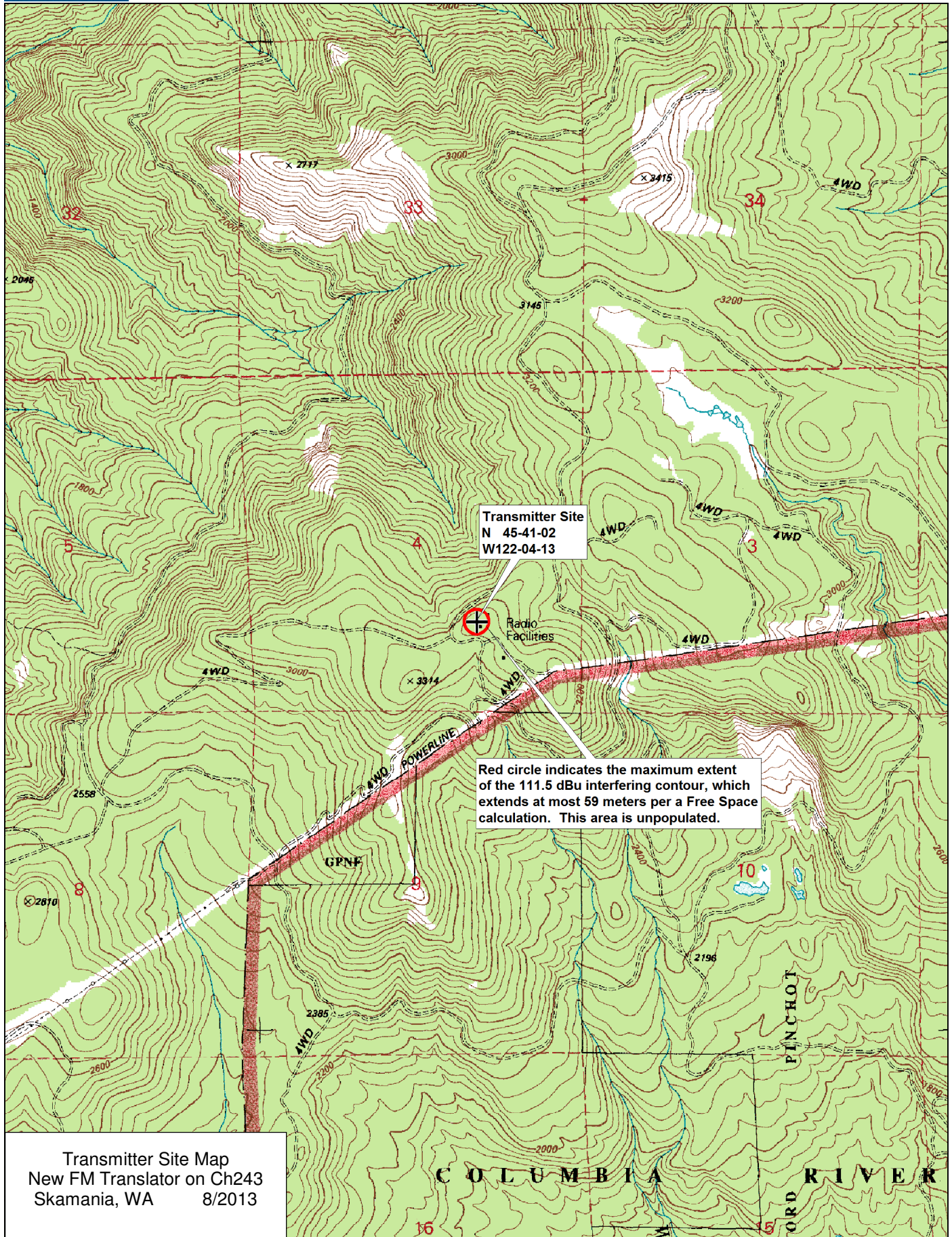
Skamania 243D 2Adj & 3Adj Study Map

0 5 10 15

Kilometers

Hatfield & Dawson 8/2013

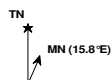
©2012 CALIPER



Data use subject to license.

© DeLorme. XMap® 7.

www.delorme.com



**August 2013
New FM Translator
Skamania, Washington Channel 243D
RF Exposure Study**

Facilities Proposed

The proposed operation will be on Channel 243D (96.5 MHz) with a maximum lobe effective radiated power of 10 watts. Operation is proposed with an antenna to be mounted on an existing tower having FCC Antenna Structure Registration Number 1036088.

RF Exposure Calculations

Section 1.1307(b)(1) of the Commission's Rules exempts FM translators and boosters operating with an effective radiated power of 100 watts or less from the requirement to submit an Environmental Assessment to determine compliance with FCC specified guidelines for human exposure to radiofrequency electromagnetic fields. The applicant proposes operation with a maximum lobe effective radiated power of 10 watts and therefore no calculations have been submitted. Nonetheless, public access to the site is restricted and all station personnel and contractors are required to follow appropriate safety procedures, including turning off the transmitter if necessary, prior to commencing work on the antenna tower.