

TECHNICAL EXHIBIT  
DTV MAXIMIZATION APPLICATION  
STATION WTOV-DT  
STEUBENVILLE, OHIO  
CH 9    26.2 KW    282 M

Technical Narrative

This Technical Exhibit supports an application for digital television (DTV) station WTOV-DT for its "maximized" DTV operation at Steubenville, Ohio. This application requests a construction permit (CP) for WTOV-DT digital television operation on channel 9 at Steubenville with a non-directional effective radiated power of 26.2 kilowatts.

Proposed Facilities

Station WTOV-DT proposes to operate DTV channel 9 from its authorized DTV construction permit facility. The antenna height above average terrain for the channel 9 DTV operation will be 282 meters. The proposed WTOV-DT effective radiated power exceeds the Commission's *Appendix B* allocated maximum effective radiated power in some azimuthal directions for WTOV-DT.<sup>1</sup> Therefore, an allocation study was completed to ensure no prohibited interference would occur.

---

<sup>1</sup> See Seventh Report And Order And Eighth Further Notice Of Proposed Rule Making in the Matter of Advanced Television Systems and their Impact Upon the Existing Television Broadcast Service, MB Docket 87-268, Released August 6, 2007; Adopted August 1, 2007.

The proposed DTV transmitter site will be located atop the WTOV-TV tower. Therefore, the proposed site location is:

40° 20' 33" North Latitude  
80° 37' 14" West Longitude

A sketch of antenna and pertinent elevations are included as Figure 1.

The Appendix contains the vertical plane radiation pattern for the proposed antenna system.

Figure 2 is a map showing the DTV predicted coverage contour and the associated analog Grade B coverage contour. The extent of the contour has been calculated using the normal FCC prediction method. The Steubenville city limits were derived from information contained in the 2000 U.S. Census of Population and Housing.

#### Population Served

The herein proposed WTOV-DT "maximized" facility is predicted to serve 3,687,539 persons, post-transition based upon the 2000 Census. WTOV-DT's associated Appendix B facility is predicted to serve 2,829,000 persons. Therefore, the herein proposed WTOV-DT facility would serve more than 100% of WTOV-DT's Appendix B population.

---

Allocation Considerations

The proposed WTOV-DT Channel 47 facility meets the requirements of Section 73.623 of the FCC Rules concerning predicted interference to other Appendix B DTV allotments. Longley-Rice interference analyses were conducted pursuant to the requirements of the FCC Rules; OET Bulletin No. 69; and published FCC guidelines for preparation of such interference analyses. The Longley-Rice interference analyses were conducted using the software developed by du Treil, Lundin & Rackley, Inc. based on the FCC published software routines.<sup>2</sup> Stations selected for analysis were determined pursuant to the distance requirements outlined in the FCC DTV Processing Guidelines Public Notice. The results of the interference analyses for the proposed WTOV-DT facility are summarized herein at Figure 3. As indicated therein, the proposed facility will meet the 0.5% criterion outlined in the FCC Rules and published guidelines with respect to all considered stations.<sup>3</sup>

Radiofrequency Electromagnetic Field Exposure

The proposed WTOV-DT facilities were evaluated in terms of potential radiofrequency electromagnetic field exposure at ground level to workers and the general public. The radiation center for the proposed WTOV-DT antenna is located 265 meters above ground level. The maximum

---

<sup>2</sup> The duTreil, Lundin & Rackley, Inc. DTV interference analysis program is based on the program and procedures outlined by the FCC in the Sixth Report and Order; subsequent Memorandum Opinion and Order; and FCC OET Bulletin No. 69. A nominal grid size resolution of 2 km was employed.

effective radiated power is 26.2 kilowatts. A "worst case" downward relative field value of 0.25 is assumed for the antenna's downward radiation. The calculated power density at a point 2 meters above ground level is 0.0008 mW/cm<sup>2</sup>. This is less than 5 percent of the Commission's recommended limit of 0.2 mW/cm<sup>2</sup> for channel 9 for an "uncontrolled" environment.

Access to the transmitting site is restricted and appropriately marked with warning signs. As this is a multi-user site an agreement between the stations will control access. In the event that workers or other authorized personnel enter restricted areas or climb the tower, appropriate measures will be taken to assure worker safety with respect to radio frequency radiation exposure. Such measures include reducing the average exposure by spreading out the work over a longer period of time, wearing "accepted" RFR protective clothing and/or RFR exposure monitors or scheduling work when the stations are at reduced power or shut down. The proposed WTOV-DT operation appears to be otherwise categorically excluded from environmental processing.

---

3 Interference analysis results reflect the net change in interference to a given station considering the interference predicted to occur from all other stations (i.e. "masking") including the allotment facility for WTOV-DT. This properly reflects the net interference change for determining compliance with the FCC 0.5% *de minimis* standard.

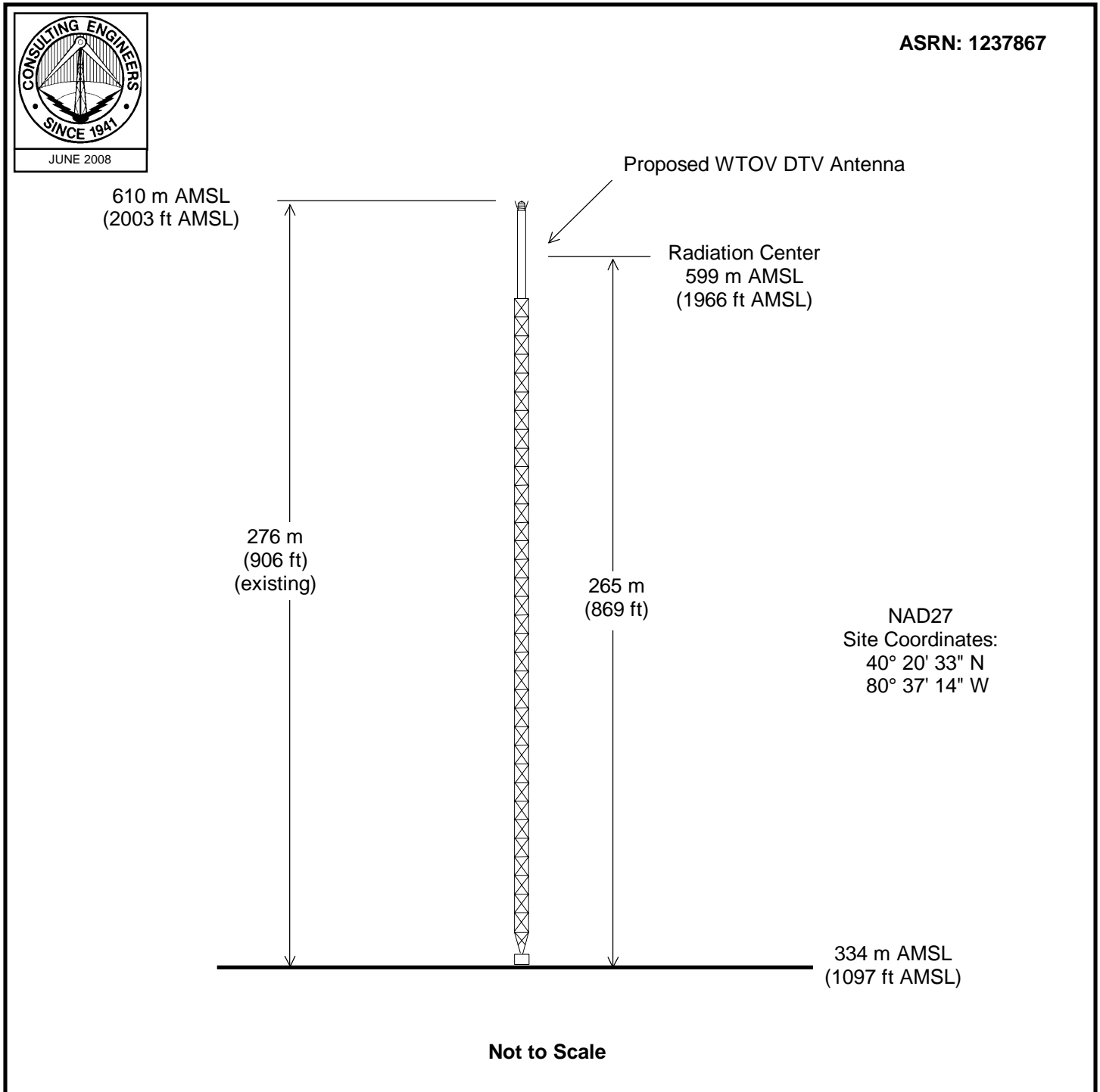
It is noted that this statement only addresses the potential for radiofrequency electromagnetic field exposure. All other aspects of the environmental processing analysis will be or already have been provided to the FCC by the tower owner.

Charles Cooper

du Treil, Lundin & Rackley, Inc.  
201 Fletcher Avenue  
Sarasota, Florida 32437  
941.329.6000

June 3, 2008

Figure 1

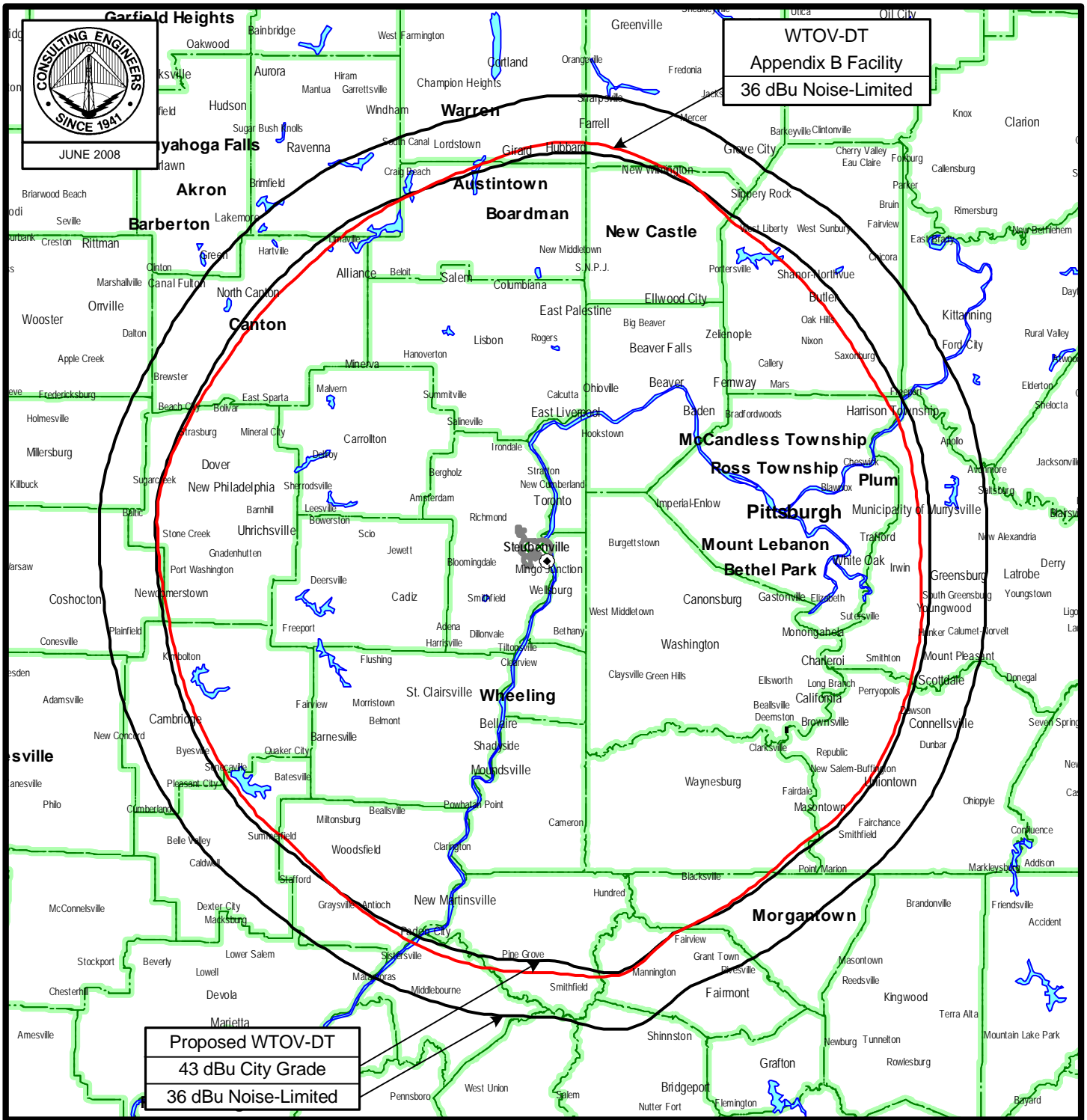


## ANTENNA AND SUPPORTING STRUCTURE

DTV STATION WTOV  
STEUBENVILLE, OHIO  
CH 9 26.2 KW 282 M

du Treil, Lundin & Rackley, Inc. Sarasota, Florida

**Figure 2**



## **PREDICTED COVERAGE CONTOURS**

STATION WTOV-DT  
STEUBENVILLE, OHIO  
CH 9 26.2 KW 282 M

du Treil, Lundin & Rackley, Inc Sarasota, Florida

Figure 3

Percent allowed new interference: 0.500  
 Percent allowed new interference to Class A: 0.500  
 TW Census data selected 2000  
 Post Transition Data Base Selected /export/home/cdbs/pt\_tvdb.sff

#### TV INTERFERENCE and SPACING ANALYSIS PROGRAM

Date: 06-03-2008 Time: 11:15:22

Record Selected for Analysis

WTOV-TV USERRECORD-01 STEUBENVILLE OH US  
 Channel 09 ERP 26.2 kW HAAT 282. m RCAMSL 00599 m  
 Latitude 040-20-33 Longitude 0080-37-14  
 Status APP Zone 2 Border  
 Last update Cutoff date Docket  
 Comments  
 Applicant

Cell Size for Service Analysis 2.0 km/side

Distance Increments for Longley-Rice Analysis 1.00 km

Facility meets maximum height/power limits

Azimuth (Deg)	ERP (kW)	HAAT (m)	36.0 dBu F(50,90) (km)
0.0	26.200	335.2	102.6
45.0	26.200	271.1	98.6
90.0	26.200	244.4	97.3
135.0	26.200	277.9	98.9
180.0	26.200	313.4	100.8
225.0	26.200	276.8	98.8
270.0	26.200	272.2	98.7
315.0	26.200	262.1	98.3

Evaluation toward Class A Stations

No Spacing violations or contour overlap to Class A stations

Class A Evaluation Complete

Proposed facility OK to FCC Monitoring Stations

Proposed facility OK toward West Virginia quiet zone

Proposed facility OK toward Table Mountain

Proposed facility is within the Canadian coordination distance  
 Distance to border = 205.8km

Proposed facility is beyond the Mexican coordination distance

Proposed station is 0.17km from AM station  
 STEUBENVILLE OH WSTV Status: L Antenna: ND1

\*\*\*\*\*  
 Start of Interference Analysis

Figure 3

Channel	Call	City/State	ARN
09	WTOV-TV	STEUBENVILLE OH	USERRECORD01

#### Stations Potentially Affected by Proposed Station

Chan	Call	City/State	Dist(km)	Status	Application Ref. No.
08	WJW	CLEVELAND OH	146.1	PLN	DTVPLN -DTVP0152
08	WJW	CLEVELAND OH	146.1	CP	BPCDT -20080311AAN
08	WWCP-TV	JOHNSTOWN PA	125.9	CP	BPCDT -20080408ABF
08	WWCP-TV	JOHNSTOWN PA	125.9	PLN	DTVPLN -DTVP0158
09	WUSA	WASHINGTON DC	340.2	CP MOD	BMPCDT -20080425ABL
09	WUSA	WASHINGTON DC	340.2	PLN	DTVPLN -DTVP0186
10	WOIO	SHAKER HEIGHTS OH	147.1	LIC	BLCDT -19991110AAR
10	WOIO	SHAKER HEIGHTS OH	147.1	PLN	DTVPLN -DTVP0285
10	WVFX	CLARKSBURG WV	118.2	CP MOD	BMPCDT -20020930AAV
10	WVFX	CLARKSBURG WV	118.2	PLN	DTVPLN -DTVP0300

\*\*\*\*\*

Analysis of Interference to Affected Station 1

Channel	Call	City/State	Application Ref. No.
08	WJW	CLEVELAND OH	DTVPLN -DTVP0152

#### Stations Potentially Affecting This Station

Chan	Call	City/State	Dist(km)	Status	Application Ref. No.
07	WJBK	DETROIT MI	173.9	PLN	DTVPLN -DTVP0069
07	WJBK	DETROIT MI	173.9	APP	BPCDT -20080307ACO
07	WTRF-TV	WHEELING WV	165.9	CP MOD	BMPCDT -20080317AGD
07	WTRF-TV	WHEELING WV	165.9	PLN	DTVPLN -DTVP0107
08	WWMT	KALAMAZOO MI	345.7	CP	BPCDT -20080312ABA
08	WWMT	KALAMAZOO MI	345.7	PLN	DTVPLN -DTVP0135
08	WLIO	LIMA OH	213.7	CP MOD	BMPCDT -20060517ABE
08	WLIO	LIMA OH	213.7	PLN	DTVPLN -DTVP0153
08	WWCP-TV	JOHNSTOWN PA	252.7	CP	BPCDT -20080408ABF
08	WWCP-TV	JOHNSTOWN PA	252.7	PLN	DTVPLN -DTVP0158
08	WVNS-TV	LEWISBURG WV	408.3	CP MOD	BMPCDT -20040608ABO
08	WVNS-TV	LEWISBURG WV	408.3	PLN	DTVPLN -DTVP0172
09	WTOV-TV	STEUBENVILLE OH	146.1	PLN	DTVPLN -DTVP0214
09	WTOV-TV	STEUBENVILLE OH	146.1	APP	USERRECORD-01

\*\*\*\*\*

Analysis of Interference to Affected Station 2

Channel	Call	City/State	Application Ref. No.
08	WJW	CLEVELAND OH	BPCDT -20080311AAN

#### Stations Potentially Affecting This Station

Chan	Call	City/State	Dist(km)	Status	Application Ref. No.
07	WJBK	DETROIT MI	173.8	PLN	DTVPLN -DTVP0069
07	WJBK	DETROIT MI	173.8	APP	BPCDT -20080307ACO
07	WTRF-TV	WHEELING WV	165.9	CP MOD	BMPCDT -20080317AGD
07	WTRF-TV	WHEELING WV	165.9	PLN	DTVPLN -DTVP0107
08	WWMT	KALAMAZOO MI	345.7	CP	BPCDT -20080312ABA
08	WWMT	KALAMAZOO MI	345.7	PLN	DTVPLN -DTVP0135
08	WLIO	LIMA OH	213.7	CP MOD	BMPCDT -20060517ABE
08	WLIO	LIMA OH	213.7	PLN	DTVPLN -DTVP0153
08	WWCP-TV	JOHNSTOWN PA	252.7	CP	BPCDT -20080408ABF
08	WWCP-TV	JOHNSTOWN PA	252.7	PLN	DTVPLN -DTVP0158



Figure 3

```

08 WVNS-TV LEWISBURG WV      408.3 CP MOD BMPCDT -20040608ABO
08 WVNS-TV LEWISBURG WV      408.3 PLN DTVPLN -DTV0172
09 WTOV-TV STEUBENVILLE OH   146.1 PLN DTVPLN -DTV0214
09 WTOV-TV STEUBENVILLE OH   146.1 APP USERRECORD-01
Proposal causes no interference

```

```

#####

```

```

Analysis of Interference to Affected Station 3

```

```

Analysis of current record
Channel Call City/State Application Ref. No.
08 WWCN-TV JOHNSTOWN PA BPCDT -20080408ABF

```

```

Stations Potentially Affecting This Station

```

```

Chan Call City/State Dist(km) Status Application Ref. No.
07 WJLA-TV WASHINGTON DC 224.1 CP BPCDT -20080507AAI
07 WJLA-TV WASHINGTON DC 224.1 PLN DTVPLN -DTV0052
07 WTRF-TV WHEELING WV 136.7 CP MOD BMPCDT -20080317AGD
07 WTRF-TV WHEELING WV 136.7 PLN DTVPLN -DTV0107
08 WNJB NEW BRUNSWICK NJ 396.3 CP MOD BNPEDT -20000425AAM
08 WNJB NEW BRUNSWICK NJ 396.3 PLN DTVPLN -DTV0147
08 WICZ-TV BINGHAMTON NY 339.9 LIC BLCDT -20060320AFC
08 WICZ-TV BINGHAMTON NY 339.9 PLN DTVPLN -DTV0151
08 WJW CLEVELAND OH 252.7 PLN DTVPLN -DTV0152
08 WJW CLEVELAND OH 252.7 CP BPCDT -20080311AAN
08 WLIO LIMA OH 425.8 CP MOD BMPCDT -20060517ABE
08 WLIO LIMA OH 425.8 PLN DTVPLN -DTV0153
08 WGAL LANCASTER PA 215.9 CP BPCDT -20080314ABN
08 WGAL LANCASTER PA 215.9 PLN DTVPLN -DTV0159
08 WVNS-TV LEWISBURG WV 299.6 CP MOD BMPCDT -20040608ABO
08 WVNS-TV LEWISBURG WV 299.6 PLN DTVPLN -DTV0172
09 WUSA WASHINGTON DC 224.1 CP MOD BMPCDT -20080425ABL
09 WUSA WASHINGTON DC 224.1 PLN DTVPLN -DTV0186
09 WTOV-TV STEUBENVILLE OH 125.9 PLN DTVPLN -DTV0214
09 WTOV-TV STEUBENVILLE OH 125.9 APP USERRECORD-01

```

```

Total scenarios = 16

```

```

Result key: 1
Scenario 1 Affected station 3
Before Analysis

```

```

Results for: 8A PA JOHNSTOWN BPCDT 20080408ABF CP
HAAT 368.0 m, ATV ERP 8.4 kW
POPULATION AREA (sq km)
within Noise Limited Contour 2856467 25455.8
not affected by terrain losses 2626138 22626.5
lost to NTSC IX 0 0.0
lost to additional IX by ATV 17497 180.9
lost to ATV IX only 17497 180.9
lost to all IX 17497 180.9

```

```

Potential Interfering Stations Included in above Scenario 1

```

```

7A WV WHEELING BMPCDT 20080317AGD CP
8A OH CLEVELAND DTVPLN DTV0152 PLN
8A PA LANCASTER BPCDT 20080314ABN CP
8A WV LEWISBURG BMPCDT 20040608ABO CP
9A OH STEUBENVILLE DTVPLN DTV0214 PLN

```

```

After Analysis

```

```

Results for: 8A PA JOHNSTOWN BPCDT 20080408ABF CP
HAAT 368.0 m, ATV ERP 8.4 kW
POPULATION AREA (sq km)
within Noise Limited Contour 2856467 25455.8

```

```

not affected by terrain losses 2626138 22626.5
lost to NTSC IX 0 0.0
lost to additional IX by ATV 29424 249.2
lost to ATV IX only 29424 249.2
lost to all IX 29424 249.2

```

```

Potential Interfering Stations Included in above Scenario 1

```

```

7A WV WHEELING BMPCDT 20080317AGD CP
8A OH CLEVELAND DTVPLN DTV0152 PLN
8A PA LANCASTER BPCDT 20080314ABN CP
8A WV LEWISBURG BMPCDT 20040608ABO CP
9A OH STEUBENVILLE USERRECORD01 APP

```

```

Percent new IX = 0.4572%

```

```

Result key: 2
Scenario 2 Affected station 3
Before Analysis

```

```

Results for: 8A PA JOHNSTOWN BPCDT 20080408ABF CP
HAAT 368.0 m, ATV ERP 8.4 kW
POPULATION AREA (sq km)
within Noise Limited Contour 2856467 25455.8
not affected by terrain losses 2626138 22626.5
lost to NTSC IX 0 0.0
lost to additional IX by ATV 17497 180.9
lost to ATV IX only 17497 180.9
lost to all IX 17497 180.9

```

```

Potential Interfering Stations Included in above Scenario 2

```

```

7A WV WHEELING BMPCDT 20080317AGD CP
8A OH CLEVELAND DTVPLN DTV0152 PLN
8A PA LANCASTER BPCDT 20080314ABN CP
8A WV LEWISBURG DTVPLN DTV0172 PLN
9A OH STEUBENVILLE DTVPLN DTV0214 PLN

```

```

After Analysis

```

```

Results for: 8A PA JOHNSTOWN BPCDT 20080408ABF CP
HAAT 368.0 m, ATV ERP 8.4 kW
POPULATION AREA (sq km)
within Noise Limited Contour 2856467 25455.8
not affected by terrain losses 2626138 22626.5
lost to NTSC IX 0 0.0
lost to additional IX by ATV 29424 249.2
lost to ATV IX only 29424 249.2
lost to all IX 29424 249.2

```

```

Potential Interfering Stations Included in above Scenario 2

```

```

7A WV WHEELING BMPCDT 20080317AGD CP
8A OH CLEVELAND DTVPLN DTV0152 PLN
8A PA LANCASTER BPCDT 20080314ABN CP
8A WV LEWISBURG DTVPLN DTV0172 PLN
9A OH STEUBENVILLE USERRECORD01 APP

```

```

Percent new IX = 0.4572%

```

```

Result key: 3
Scenario 3 Affected station 3
Before Analysis

```

```

Results for: 8A PA JOHNSTOWN BPCDT 20080408ABF CP
HAAT 368.0 m, ATV ERP 8.4 kW
POPULATION AREA (sq km)
within Noise Limited Contour 2856467 25455.8
not affected by terrain losses 2626138 22626.5
lost to NTSC IX 0 0.0
lost to additional IX by ATV 17450 172.8

```

Figure 3

Figure 3

lost to ATV IX only 17450 172.8  
lost to all IX 17450 172.8

Potential Interfering Stations Included in above Scenario 3

7A WV WHEELING	BMPCDT	20080317AGD	CP
8A OH CLEVELAND	DTVPLN	DTVP0152	PLN
8A PA LANCASTER	DTVPLN	DTVP0159	PLN
8A WV LEWISBURG	BMPCDT	20040608ABO	CP
9A OH STEUBENVILLE	DTVPLN	DTVP0214	PLN

After Analysis

Results for: 8A PA JOHNSTOWN BPCDT 20080408ABF CP  
HAAT 368.0 m, ATV ERP 8.4 kW

	POPULATION	AREA (sq km)
within Noise Limited Contour	2856467	25455.8
not affected by terrain losses	2626138	22626.5
lost to NTSC IX	0	0.0
lost to additional IX by ATV	29377	241.1
lost to ATV IX only	29377	241.1
lost to all IX	29377	241.1

Potential Interfering Stations Included in above Scenario 3

7A WV WHEELING	BMPCDT	20080317AGD	CP
8A OH CLEVELAND	DTVPLN	DTVP0152	PLN
8A PA LANCASTER	DTVPLN	DTVP0159	PLN
8A WV LEWISBURG	BMPCDT	20040608ABO	CP
9A OH STEUBENVILLE	USERRECORD01		APP

Percent new IX = 0.4572%

Result key: 4  
Scenario 4 Affected station 3  
Before Analysis

Results for: 8A PA JOHNSTOWN BPCDT 20080408ABF CP  
HAAT 368.0 m, ATV ERP 8.4 kW

	POPULATION	AREA (sq km)
within Noise Limited Contour	2856467	25455.8
not affected by terrain losses	2626138	22626.5
lost to NTSC IX	0	0.0
lost to additional IX by ATV	17450	172.8
lost to ATV IX only	17450	172.8
lost to all IX	17450	172.8

Potential Interfering Stations Included in above Scenario 4

7A WV WHEELING	BMPCDT	20080317AGD	CP
8A OH CLEVELAND	DTVPLN	DTVP0152	PLN
8A PA LANCASTER	DTVPLN	DTVP0159	PLN
8A WV LEWISBURG	DTVPLN	DTVP0172	PLN
9A OH STEUBENVILLE	DTVPLN	DTVP0214	PLN

After Analysis

Results for: 8A PA JOHNSTOWN BPCDT 20080408ABF CP  
HAAT 368.0 m, ATV ERP 8.4 kW

	POPULATION	AREA (sq km)
within Noise Limited Contour	2856467	25455.8
not affected by terrain losses	2626138	22626.5
lost to NTSC IX	0	0.0
lost to additional IX by ATV	29377	241.1
lost to ATV IX only	29377	241.1
lost to all IX	29377	241.1

Potential Interfering Stations Included in above Scenario 4

7A WV WHEELING	BMPCDT	20080317AGD	CP
8A OH CLEVELAND	DTVPLN	DTVP0152	PLN

Figure 3

8A PA LANCASTER	DTVPLN	DTVP0159	PLN
8A WV LEWISBURG	DTVPLN	DTVP0172	PLN
9A OH STEUBENVILLE	USERRECORD01		APP

Percent new IX = 0.4572%

Result key: 5  
Scenario 5 Affected station 3  
Before Analysis

Results for: 8A PA JOHNSTOWN BPCDT 20080408ABF CP  
HAAT 368.0 m, ATV ERP 8.4 kW

	POPULATION	AREA (sq km)
within Noise Limited Contour	2856467	25455.8
not affected by terrain losses	2626138	22626.5
lost to NTSC IX	0	0.0
lost to additional IX by ATV	13217	168.8
lost to ATV IX only	13217	168.8
lost to all IX	13217	168.8

Potential Interfering Stations Included in above Scenario 5

7A WV WHEELING	BMPCDT	20080317AGD	CP
8A OH CLEVELAND	BPCDT	20080311AAN	CP
8A PA LANCASTER	BPCDT	20080314ABN	CP
8A WV LEWISBURG	BMPCDT	20040608ABO	CP
9A OH STEUBENVILLE	DTVPLN	DTVP0214	PLN

After Analysis

Results for: 8A PA JOHNSTOWN BPCDT 20080408ABF CP  
HAAT 368.0 m, ATV ERP 8.4 kW

	POPULATION	AREA (sq km)
within Noise Limited Contour	2856467	25455.8
not affected by terrain losses	2626138	22626.5
lost to NTSC IX	0	0.0
lost to additional IX by ATV	24989	237.1
lost to ATV IX only	24989	237.1
lost to all IX	24989	237.1

Potential Interfering Stations Included in above Scenario 5

7A WV WHEELING	BMPCDT	20080317AGD	CP
8A OH CLEVELAND	BPCDT	20080311AAN	CP
8A PA LANCASTER	BPCDT	20080314ABN	CP
8A WV LEWISBURG	BMPCDT	20040608ABO	CP
9A OH STEUBENVILLE	USERRECORD01		APP

Percent new IX = 0.4505%

Result key: 6  
Scenario 6 Affected station 3  
Before Analysis

Results for: 8A PA JOHNSTOWN BPCDT 20080408ABF CP  
HAAT 368.0 m, ATV ERP 8.4 kW

	POPULATION	AREA (sq km)
within Noise Limited Contour	2856467	25455.8
not affected by terrain losses	2626138	22626.5
lost to NTSC IX	0	0.0
lost to additional IX by ATV	13217	168.8
lost to ATV IX only	13217	168.8
lost to all IX	13217	168.8

Potential Interfering Stations Included in above Scenario 6

7A WV WHEELING	BMPCDT	20080317AGD	CP
8A OH CLEVELAND	BPCDT	20080311AAN	CP
8A PA LANCASTER	BPCDT	20080314ABN	CP
8A WV LEWISBURG	DTVPLN	DTVP0172	PLN
9A OH STEUBENVILLE	DTVPLN	DTVP0214	PLN

Figure 3

## After Analysis

Results for: 8A PA JOHNSTOWN BPCDT 20080408ABF CP  
 HAAT 368.0 m, ATV ERP 8.4 kW

	POPULATION	AREA (sq km)
within Noise Limited Contour	2856467	25455.8
not affected by terrain losses	2626138	22626.5
lost to NTSC IX	0	0.0
lost to additional IX by ATV	24989	237.1
lost to ATV IX only	24989	237.1
lost to all IX	24989	237.1

Potential Interfering Stations Included in above Scenario 6

7A WV WHEELING	BMPCDT	20080317AGD	CP
8A OH CLEVELAND	BPCDT	20080311AAN	CP
8A PA LANCASTER	BPCDT	20080314ABN	CP
8A WV LEWISBURG	DTVPLN	DTVP0172	PLN
9A OH STEUBENVILLE	USERRECORD01	APP	

Percent new IX = 0.4505%

Result key: 7  
 Scenario 7 Affected station 3  
 Before Analysis

Results for: 8A PA JOHNSTOWN BPCDT 20080408ABF CP  
 HAAT 368.0 m, ATV ERP 8.4 kW

	POPULATION	AREA (sq km)
within Noise Limited Contour	2856467	25455.8
not affected by terrain losses	2626138	22626.5
lost to NTSC IX	0	0.0
lost to additional IX by ATV	13170	160.8
lost to ATV IX only	13170	160.8
lost to all IX	13170	160.8

Potential Interfering Stations Included in above Scenario 7

7A WV WHEELING	BMPCDT	20080317AGD	CP
8A OH CLEVELAND	BPCDT	20080311AAN	CP
8A PA LANCASTER	DTVPLN	DTVP0159	PLN
8A WV LEWISBURG	BMPCDT	20040608ABO	CP
9A OH STEUBENVILLE	DTVPLN	DTVP0214	PLN

## After Analysis

Results for: 8A PA JOHNSTOWN BPCDT 20080408ABF CP  
 HAAT 368.0 m, ATV ERP 8.4 kW

	POPULATION	AREA (sq km)
within Noise Limited Contour	2856467	25455.8
not affected by terrain losses	2626138	22626.5
lost to NTSC IX	0	0.0
lost to additional IX by ATV	24942	229.1
lost to ATV IX only	24942	229.1
lost to all IX	24942	229.1

Potential Interfering Stations Included in above Scenario 7

7A WV WHEELING	BMPCDT	20080317AGD	CP
8A OH CLEVELAND	BPCDT	20080311AAN	CP
8A PA LANCASTER	DTVPLN	DTVP0159	PLN
8A WV LEWISBURG	BMPCDT	20040608ABO	CP
9A OH STEUBENVILLE	USERRECORD01	APP	

Percent new IX = 0.4505%

Result key: 8  
 Scenario 8 Affected station 3  
 Before Analysis

Figure 3

Results for: 8A PA JOHNSTOWN BPCDT 20080408ABF CP  
 HAAT 368.0 m, ATV ERP 8.4 kW

	POPULATION	AREA (sq km)
within Noise Limited Contour	2856467	25455.8
not affected by terrain losses	2626138	22626.5
lost to NTSC IX	0	0.0
lost to additional IX by ATV	13170	160.8
lost to ATV IX only	13170	160.8
lost to all IX	13170	160.8

Potential Interfering Stations Included in above Scenario 8

7A WV WHEELING	BMPCDT	20080317AGD	CP
8A OH CLEVELAND	BPCDT	20080311AAN	CP
8A PA LANCASTER	DTVPLN	DTVP0159	PLN
8A WV LEWISBURG	DTVPLN	DTVP0172	PLN
9A OH STEUBENVILLE	DTVPLN	DTVP0214	PLN

## After Analysis

Results for: 8A PA JOHNSTOWN BPCDT 20080408ABF CP  
 HAAT 368.0 m, ATV ERP 8.4 kW

	POPULATION	AREA (sq km)
within Noise Limited Contour	2856467	25455.8
not affected by terrain losses	2626138	22626.5
lost to NTSC IX	0	0.0
lost to additional IX by ATV	24942	229.1
lost to ATV IX only	24942	229.1
lost to all IX	24942	229.1

Potential Interfering Stations Included in above Scenario 8

7A WV WHEELING	BMPCDT	20080317AGD	CP
8A OH CLEVELAND	BPCDT	20080311AAN	CP
8A PA LANCASTER	DTVPLN	DTVP0159	PLN
8A WV LEWISBURG	DTVPLN	DTVP0172	PLN
9A OH STEUBENVILLE	USERRECORD01	APP	

Percent new IX = 0.4505%

Result key: 9  
 Scenario 9 Affected station 3  
 Before Analysis

Results for: 8A PA JOHNSTOWN BPCDT 20080408ABF CP  
 HAAT 368.0 m, ATV ERP 8.4 kW

	POPULATION	AREA (sq km)
within Noise Limited Contour	2856467	25455.8
not affected by terrain losses	2626138	22626.5
lost to NTSC IX	0	0.0
lost to additional IX by ATV	17497	180.9
lost to ATV IX only	17497	180.9
lost to all IX	17497	180.9

Potential Interfering Stations Included in above Scenario 9

7A WV WHEELING	DTVPLN	DTVP0107	PLN
8A OH CLEVELAND	DTVPLN	DTVP0152	PLN
8A PA LANCASTER	BPCDT	20080314ABN	CP
8A WV LEWISBURG	BMPCDT	20040608ABO	CP
9A OH STEUBENVILLE	DTVPLN	DTVP0214	PLN

## After Analysis

Results for: 8A PA JOHNSTOWN BPCDT 20080408ABF CP  
 HAAT 368.0 m, ATV ERP 8.4 kW

	POPULATION	AREA (sq km)
within Noise Limited Contour	2856467	25455.8
not affected by terrain losses	2626138	22626.5
lost to NTSC IX	0	0.0
lost to additional IX by ATV	29424	249.2

Figure 3

lost to ATV IX only	29424	249.2
lost to all IX	29424	249.2
Potential Interfering Stations Included in above Scenario	9	
7A WV WHEELING	DTVPLN	DTVP0107 PLN
8A OH CLEVELAND	DTVPLN	DTVP0152 PLN
8A PA LANCASTER	BPCDT	20080314ABN CP
8A WV LEWISBURG	BPCDT	20040608ABO CP
9A OH STEUBENVILLE	USERRECORD01	APP
Percent new IX =	0.4572%	
Result key:	10	
Scenario	10 Affected station	3
Before Analysis		
Results for:	8A PA JOHNSTOWN	BPCDT 20080408ABF CP
HAAT	368.0 m, ATV ERP	8.4 kW
	POPULATION	AREA (sq km)
within Noise Limited Contour	2856467	25455.8
not affected by terrain losses	2626138	22626.5
lost to NTSC IX	0	0.0
lost to additional IX by ATV	17497	180.9
lost to ATV IX only	17497	180.9
lost to all IX	17497	180.9
Potential Interfering Stations Included in above Scenario	10	
7A WV WHEELING	DTVPLN	DTVP0107 PLN
8A OH CLEVELAND	DTVPLN	DTVP0152 PLN
8A PA LANCASTER	BPCDT	20080314ABN CP
8A WV LEWISBURG	DTVPLN	DTVP0172 PLN
9A OH STEUBENVILLE	DTVPLN	DTVP0214 PLN
After Analysis		
Results for:	8A PA JOHNSTOWN	BPCDT 20080408ABF CP
HAAT	368.0 m, ATV ERP	8.4 kW
	POPULATION	AREA (sq km)
within Noise Limited Contour	2856467	25455.8
not affected by terrain losses	2626138	22626.5
lost to NTSC IX	0	0.0
lost to additional IX by ATV	29424	249.2
lost to ATV IX only	29424	249.2
lost to all IX	29424	249.2
Potential Interfering Stations Included in above Scenario	10	
7A WV WHEELING	DTVPLN	DTVP0107 PLN
8A OH CLEVELAND	DTVPLN	DTVP0152 PLN
8A PA LANCASTER	BPCDT	20080314ABN CP
8A WV LEWISBURG	DTVPLN	DTVP0172 PLN
9A OH STEUBENVILLE	USERRECORD01	APP
Percent new IX =	0.4572%	
Result key:	11	
Scenario	11 Affected station	3
Before Analysis		
Results for:	8A PA JOHNSTOWN	BPCDT 20080408ABF CP
HAAT	368.0 m, ATV ERP	8.4 kW
	POPULATION	AREA (sq km)
within Noise Limited Contour	2856467	25455.8
not affected by terrain losses	2626138	22626.5
lost to NTSC IX	0	0.0
lost to additional IX by ATV	17450	172.8
lost to ATV IX only	17450	172.8
lost to all IX	17450	172.8
Potential Interfering Stations Included in above Scenario	12	
7A WV WHEELING	DTVPLN	DTVP0107 PLN
8A OH CLEVELAND	DTVPLN	DTVP0152 PLN
8A PA LANCASTER	DTVPLN	DTVP0159 PLN
8A WV LEWISBURG	DTVPLN	DTVP0172 PLN
9A OH STEUBENVILLE	DTVPLN	DTVP0214 PLN
After Analysis		
Results for:	8A PA JOHNSTOWN	BPCDT 20080408ABF CP
HAAT	368.0 m, ATV ERP	8.4 kW
	POPULATION	AREA (sq km)
within Noise Limited Contour	2856467	25455.8
not affected by terrain losses	2626138	22626.5
lost to NTSC IX	0	0.0
lost to additional IX by ATV	29377	241.1
lost to ATV IX only	29377	241.1
lost to all IX	29377	241.1
Potential Interfering Stations Included in above Scenario	11	
7A WV WHEELING	DTVPLN	DTVP0107 PLN
8A OH CLEVELAND	DTVPLN	DTVP0152 PLN
8A PA LANCASTER	DTVPLN	DTVP0159 PLN
8A WV LEWISBURG	BPCDT	20040608ABO CP
9A OH STEUBENVILLE	USERRECORD01	APP

Figure 3

Potential Interfering Stations Included in above Scenario	11	
7A WV WHEELING	DTVPLN	DTVP0107 PLN
8A OH CLEVELAND	DTVPLN	DTVP0152 PLN
8A PA LANCASTER	DTVPLN	DTVP0159 PLN
8A WV LEWISBURG	BPCDT	20040608ABO CP
9A OH STEUBENVILLE	DTVPLN	DTVP0214 PLN
After Analysis		
Results for:	8A PA JOHNSTOWN	BPCDT 20080408ABF CP
HAAT	368.0 m, ATV ERP	8.4 kW
	POPULATION	AREA (sq km)
within Noise Limited Contour	2856467	25455.8
not affected by terrain losses	2626138	22626.5
lost to NTSC IX	0	0.0
lost to additional IX by ATV	29377	241.1
lost to ATV IX only	29377	241.1
lost to all IX	29377	241.1
Potential Interfering Stations Included in above Scenario	11	
7A WV WHEELING	DTVPLN	DTVP0107 PLN
8A OH CLEVELAND	DTVPLN	DTVP0152 PLN
8A PA LANCASTER	DTVPLN	DTVP0159 PLN
8A WV LEWISBURG	BPCDT	20040608ABO CP
9A OH STEUBENVILLE	USERRECORD01	APP
Percent new IX =	0.4572%	
Result key:	12	
Scenario	12 Affected station	3
Before Analysis		
Results for:	8A PA JOHNSTOWN	BPCDT 20080408ABF CP
HAAT	368.0 m, ATV ERP	8.4 kW
	POPULATION	AREA (sq km)
within Noise Limited Contour	2856467	25455.8
not affected by terrain losses	2626138	22626.5
lost to NTSC IX	0	0.0
lost to additional IX by ATV	17450	172.8
lost to ATV IX only	17450	172.8
lost to all IX	17450	172.8
Potential Interfering Stations Included in above Scenario	12	
7A WV WHEELING	DTVPLN	DTVP0107 PLN
8A OH CLEVELAND	DTVPLN	DTVP0152 PLN
8A PA LANCASTER	DTVPLN	DTVP0159 PLN
8A WV LEWISBURG	DTVPLN	DTVP0172 PLN
9A OH STEUBENVILLE	DTVPLN	DTVP0214 PLN
After Analysis		
Results for:	8A PA JOHNSTOWN	BPCDT 20080408ABF CP
HAAT	368.0 m, ATV ERP	8.4 kW
	POPULATION	AREA (sq km)
within Noise Limited Contour	2856467	25455.8
not affected by terrain losses	2626138	22626.5
lost to NTSC IX	0	0.0
lost to additional IX by ATV	29377	241.1
lost to ATV IX only	29377	241.1
lost to all IX	29377	241.1
Potential Interfering Stations Included in above Scenario	12	
7A WV WHEELING	DTVPLN	DTVP0107 PLN
8A OH CLEVELAND	DTVPLN	DTVP0152 PLN
8A PA LANCASTER	DTVPLN	DTVP0159 PLN
8A WV LEWISBURG	DTVPLN	DTVP0172 PLN
9A OH STEUBENVILLE	USERRECORD01	APP

Figure 3

Percent new IX = 0.4572%

Result key: 13  
Scenario 13 Affected station 3  
Before Analysis

Results for: 8A PA JOHNSTOWN BPCDT 20080408ABF CP  
HAAT 368.0 m, ATV ERP 8.4 kW

	POPULATION	AREA (sq km)
within Noise Limited Contour	2856467	25455.8
not affected by terrain losses	2626138	22626.5
lost to NTSC IX	0	0.0
lost to additional IX by ATV	13217	168.8
lost to ATV IX only	13217	168.8
lost to all IX	13217	168.8

Potential Interfering Stations Included in above Scenario 13

7A WV WHEELING	DTVPLN	DTVP0107	PLN
8A OH CLEVELAND	BPCDT	20080311AAN	CP
8A PA LANCASTER	BPCDT	20080314ABN	CP
8A WV LEWISBURG	BMPCDT	20040608ABO	CP
9A OH STEUBENVILLE	DTVPLN	DTVP0214	PLN

After Analysis

Results for: 8A PA JOHNSTOWN BPCDT 20080408ABF CP  
HAAT 368.0 m, ATV ERP 8.4 kW

	POPULATION	AREA (sq km)
within Noise Limited Contour	2856467	25455.8
not affected by terrain losses	2626138	22626.5
lost to NTSC IX	0	0.0
lost to additional IX by ATV	24989	237.1
lost to ATV IX only	24989	237.1
lost to all IX	24989	237.1

Potential Interfering Stations Included in above Scenario 13

7A WV WHEELING	DTVPLN	DTVP0107	PLN
8A OH CLEVELAND	BPCDT	20080311AAN	CP
8A PA LANCASTER	BPCDT	20080314ABN	CP
8A WV LEWISBURG	BMPCDT	20040608ABO	CP
9A OH STEUBENVILLE	USERRECORD01		APP

Percent new IX = 0.4505%

Result key: 14  
Scenario 14 Affected station 3  
Before Analysis

Results for: 8A PA JOHNSTOWN BPCDT 20080408ABF CP  
HAAT 368.0 m, ATV ERP 8.4 kW

	POPULATION	AREA (sq km)
within Noise Limited Contour	2856467	25455.8
not affected by terrain losses	2626138	22626.5
lost to NTSC IX	0	0.0
lost to additional IX by ATV	13217	168.8
lost to ATV IX only	13217	168.8
lost to all IX	13217	168.8

Potential Interfering Stations Included in above Scenario 14

7A WV WHEELING	DTVPLN	DTVP0107	PLN
8A OH CLEVELAND	BPCDT	20080311AAN	CP
8A PA LANCASTER	BPCDT	20080314ABN	CP
8A WV LEWISBURG	DTVPLN	DTVP0172	PLN
9A OH STEUBENVILLE	DTVPLN	DTVP0214	PLN

After Analysis

Figure 3

Results for: 8A PA JOHNSTOWN BPCDT 20080408ABF CP  
HAAT 368.0 m, ATV ERP 8.4 kW

	POPULATION	AREA (sq km)
within Noise Limited Contour	2856467	25455.8
not affected by terrain losses	2626138	22626.5
lost to NTSC IX	0	0.0
lost to additional IX by ATV	24989	237.1
lost to ATV IX only	24989	237.1
lost to all IX	24989	237.1

Potential Interfering Stations Included in above Scenario 14

7A WV WHEELING	DTVPLN	DTVP0107	PLN
8A OH CLEVELAND	BPCDT	20080311AAN	CP
8A PA LANCASTER	BPCDT	20080314ABN	CP
8A WV LEWISBURG	DTVPLN	DTVP0172	PLN
9A OH STEUBENVILLE	USERRECORD01		APP

Percent new IX = 0.4505%

Result key: 15  
Scenario 15 Affected station 3  
Before Analysis

Results for: 8A PA JOHNSTOWN BPCDT 20080408ABF CP  
HAAT 368.0 m, ATV ERP 8.4 kW

	POPULATION	AREA (sq km)
within Noise Limited Contour	2856467	25455.8
not affected by terrain losses	2626138	22626.5
lost to NTSC IX	0	0.0
lost to additional IX by ATV	13170	160.8
lost to ATV IX only	13170	160.8
lost to all IX	13170	160.8

Potential Interfering Stations Included in above Scenario 15

7A WV WHEELING	DTVPLN	DTVP0107	PLN
8A OH CLEVELAND	BPCDT	20080311AAN	CP
8A PA LANCASTER	DTVPLN	DTVP0159	PLN
8A WV LEWISBURG	BMPCDT	20040608ABO	CP
9A OH STEUBENVILLE	DTVPLN	DTVP0214	PLN

After Analysis

Results for: 8A PA JOHNSTOWN BPCDT 20080408ABF CP  
HAAT 368.0 m, ATV ERP 8.4 kW

	POPULATION	AREA (sq km)
within Noise Limited Contour	2856467	25455.8
not affected by terrain losses	2626138	22626.5
lost to NTSC IX	0	0.0
lost to additional IX by ATV	24942	229.1
lost to ATV IX only	24942	229.1
lost to all IX	24942	229.1

Potential Interfering Stations Included in above Scenario 15

7A WV WHEELING	DTVPLN	DTVP0107	PLN
8A OH CLEVELAND	BPCDT	20080311AAN	CP
8A PA LANCASTER	DTVPLN	DTVP0159	PLN
8A WV LEWISBURG	BMPCDT	20040608ABO	CP
9A OH STEUBENVILLE	USERRECORD01		APP

Percent new IX = 0.4505%

Result key: 16  
Scenario 16 Affected station 3  
Before Analysis

Results for: 8A PA JOHNSTOWN BPCDT 20080408ABF CP  
HAAT 368.0 m, ATV ERP 8.4 kW

	POPULATION	AREA (sq km)
--	------------	--------------

Figure 3

within Noise Limited Contour	2856467	25455.8
not affected by terrain losses	2626138	22626.5
lost to NTSC IX	0	0.0
lost to additional IX by ATV	13170	160.8
lost to ATV IX only	13170	160.8
lost to all IX	13170	160.8

Potential Interfering Stations Included in above Scenario 16

7A WV WHEELING	DTVPLN	DTVP0107	PLN
8A OH CLEVELAND	BPCDT	20080311AAN	CP
8A PA LANCASTER	DTVPLN	DTVP0159	PLN
8A WV LEWISBURG	DTVPLN	DTVP0172	PLN
9A OH STEUBENVILLE	DTVPLN	DTVP0214	PLN

After Analysis

Results for: 8A PA JOHNSTOWN	BPCDT	20080408ABF	CP
HAAT 368.0 m, ATV ERP 8.4 kW			
	POPULATION	AREA (sq km)	
within Noise Limited Contour	2856467	25455.8	
not affected by terrain losses	2626138	22626.5	
lost to NTSC IX	0	0.0	
lost to additional IX by ATV	24942	229.1	
lost to ATV IX only	24942	229.1	
lost to all IX	24942	229.1	

Potential Interfering Stations Included in above Scenario 16

7A WV WHEELING	DTVPLN	DTVP0107	PLN
8A OH CLEVELAND	BPCDT	20080311AAN	CP
8A PA LANCASTER	DTVPLN	DTVP0159	PLN
8A WV LEWISBURG	DTVPLN	DTVP0172	PLN
9A OH STEUBENVILLE	USERRECORD01	APP	

Percent new IX = 0.4505%

Worst case new IX 0.4572% Scenario 1

#####

Analysis of Interference to Affected Station 4

Analysis of current record

Channel	Call	City/State	Application	Ref. No.
08	WWCP-TV	JOHNSTOWN PA	DTVPLN	-DTVP0158

Stations Potentially Affecting This Station

Chan	Call	City/State	Dist(km)	Status	Application	Ref. No.
07	WJLA-TV	WASHINGTON DC	224.1	CP	BPCDT	-20080507AAI
07	WJLA-TV	WASHINGTON DC	224.1	PLN	DTVPLN	-DTVP0052
07	WTRF-TV	WHEELING WV	136.7	CP MOD	BMPCDT	-20080317AGD
07	WTRF-TV	WHEELING WV	136.7	PLN	DTVPLN	-DTVP0107
08	WNJB	NEW BRUNSWICK NJ	396.3	CP MOD	BMPCDT	-20000425AAM
08	WNJB	NEW BRUNSWICK NJ	396.3	PLN	DTVPLN	-DTVP0147
08	WICZ-TV	BINGHAMTON NY	339.9	LIC	BLCDT	-20060320AFC
08	WICZ-TV	BINGHAMTON NY	339.9	PLN	DTVPLN	-DTVP0151
08	WJW	CLEVELAND OH	252.7	PLN	DTVPLN	-DTVP0152
08	WJW	CLEVELAND OH	252.7	CP	BPCDT	-20080311AAN
08	WLIO	LIMA OH	425.8	CP MOD	BMPCDT	-20060517ABE
08	WLIO	LIMA OH	425.8	PLN	DTVPLN	-DTVP0153
08	WGAL	LANCASTER PA	215.9	CP	BPCDT	-20080314ABN
08	WGAL	LANCASTER PA	215.9	PLN	DTVPLN	-DTVP0159
08	WVNS-TV	LEWISBURG WV	299.6	CP MOD	BMPCDT	-20040608ABO
08	WVNS-TV	LEWISBURG WV	299.6	PLN	DTVPLN	-DTVP0172
09	WUSA	WASHINGTON DC	224.1	CP MOD	BMPCDT	-20080425ABL
09	WUSA	WASHINGTON DC	224.1	PLN	DTVPLN	-DTVP0186
09	WTOV-TV	STEUBENVILLE OH	125.9	PLN	DTVPLN	-DTVP0214

Figure 3

09 WTOV-TV STEUBENVILLE OH 125.9 APP USERRECORD-01

Total scenarios = 8

Result key: 17  
Scenario 1 Affected station 4  
Before Analysis

Results for: 8A PA JOHNSTOWN	DTVPLN	DTVP0158	PLN
HAAT 352.0 m, ATV ERP 6.5 kW			
	POPULATION	AREA (sq km)	
within Noise Limited Contour	2769479	23804.9	
not affected by terrain losses	2556204	21140.3	
lost to NTSC IX	0	0.0	
lost to additional IX by ATV	20985	164.8	
lost to ATV IX only	20985	164.8	
lost to all IX	20985	164.8	

Potential Interfering Stations Included in above Scenario 1

8A OH CLEVELAND	DTVPLN	DTVP0152	PLN
8A PA LANCASTER	BPCDT	20080314ABN	CP
8A WV LEWISBURG	BMPCDT	20040608ABO	CP
9A OH STEUBENVILLE	DTVPLN	DTVP0214	PLN

After Analysis

Results for: 8A PA JOHNSTOWN	DTVPLN	DTVP0158	PLN
HAAT 352.0 m, ATV ERP 6.5 kW			
	POPULATION	AREA (sq km)	
within Noise Limited Contour	2769479	23804.9	
not affected by terrain losses	2556204	21140.3	
lost to NTSC IX	0	0.0	
lost to additional IX by ATV	27936	205.0	
lost to ATV IX only	27936	205.0	
lost to all IX	27936	205.0	

Potential Interfering Stations Included in above Scenario 1

8A OH CLEVELAND	DTVPLN	DTVP0152	PLN
8A PA LANCASTER	BPCDT	20080314ABN	CP
8A WV LEWISBURG	BMPCDT	20040608ABO	CP
9A OH STEUBENVILLE	USERRECORD01	APP	

Percent new IX = 0.2742%

Result key: 18  
Scenario 2 Affected station 4  
Before Analysis

Results for: 8A PA JOHNSTOWN	DTVPLN	DTVP0158	PLN
HAAT 352.0 m, ATV ERP 6.5 kW			
	POPULATION	AREA (sq km)	
within Noise Limited Contour	2769479	23804.9	
not affected by terrain losses	2556204	21140.3	
lost to NTSC IX	0	0.0	
lost to additional IX by ATV	20985	164.8	
lost to ATV IX only	20985	164.8	
lost to all IX	20985	164.8	

Potential Interfering Stations Included in above Scenario 2

8A OH CLEVELAND	DTVPLN	DTVP0152	PLN
8A PA LANCASTER	BPCDT	20080314ABN	CP
8A WV LEWISBURG	DTVPLN	DTVP0172	PLN
9A OH STEUBENVILLE	DTVPLN	DTVP0214	PLN

After Analysis

Results for: 8A PA JOHNSTOWN	DTVPLN	DTVP0158	PLN
------------------------------	--------	----------	-----

Figure 3

HAAT 352.0 m, ATV ERP 6.5 kW			
	POPULATION	AREA (sq km)	
within Noise Limited Contour	2769479	23804.9	
not affected by terrain losses	2556204	21140.3	
lost to NTSC IX	0	0.0	
lost to additional IX by ATV	27936	205.0	
lost to ATV IX only	27936	205.0	
lost to all IX	27936	205.0	
Potential Interfering Stations Included in above Scenario	2		
8A OH CLEVELAND	DTVPLN	DTVP0152	PLN
8A PA LANCASTER	BPCDT	20080314ABN	CP
8A WV LEWISBURG	DTVPLN	DTVP0172	PLN
9A OH STEUBENVILLE	USERRECORD01	APP	
Percent new IX =	0.2742%		
Result key:	19		
Scenario	3 Affected station	4	
Before Analysis			
Results for: 8A PA JOHNSTOWN	DTVPLN	DTVP0158	PLN
HAAT 352.0 m, ATV ERP 6.5 kW			
	POPULATION	AREA (sq km)	
within Noise Limited Contour	2769479	23804.9	
not affected by terrain losses	2556204	21140.3	
lost to NTSC IX	0	0.0	
lost to additional IX by ATV	19634	152.7	
lost to ATV IX only	19634	152.7	
lost to all IX	19634	152.7	
Potential Interfering Stations Included in above Scenario	3		
8A OH CLEVELAND	DTVPLN	DTVP0152	PLN
8A PA LANCASTER	DTVPLN	DTVP0159	PLN
8A WV LEWISBURG	BMPCDT	20040608ABO	CP
9A OH STEUBENVILLE	DTVPLN	DTVP0214	PLN
After Analysis			
Results for: 8A PA JOHNSTOWN	DTVPLN	DTVP0158	PLN
HAAT 352.0 m, ATV ERP 6.5 kW			
	POPULATION	AREA (sq km)	
within Noise Limited Contour	2769479	23804.9	
not affected by terrain losses	2556204	21140.3	
lost to NTSC IX	0	0.0	
lost to additional IX by ATV	26585	192.9	
lost to ATV IX only	26585	192.9	
lost to all IX	26585	192.9	
Potential Interfering Stations Included in above Scenario	3		
8A OH CLEVELAND	DTVPLN	DTVP0152	PLN
8A PA LANCASTER	DTVPLN	DTVP0159	PLN
8A WV LEWISBURG	BMPCDT	20040608ABO	CP
9A OH STEUBENVILLE	USERRECORD01	APP	
Percent new IX =	0.2740%		
Result key:	20		
Scenario	4 Affected station	4	
Before Analysis			
Results for: 8A PA JOHNSTOWN	DTVPLN	DTVP0158	PLN
HAAT 352.0 m, ATV ERP 6.5 kW			
	POPULATION	AREA (sq km)	
within Noise Limited Contour	2769479	23804.9	
not affected by terrain losses	2556204	21140.3	
lost to NTSC IX	0	0.0	
lost to additional IX by ATV	19634	152.7	
lost to ATV IX only	19634	152.7	
lost to all IX	19634	152.7	
Potential Interfering Stations Included in above Scenario	3		
8A OH CLEVELAND	DTVPLN	DTVP0152	PLN
8A PA LANCASTER	DTVPLN	DTVP0159	PLN
8A WV LEWISBURG	BMPCDT	20040608ABO	CP
9A OH STEUBENVILLE	USERRECORD01	APP	
Percent new IX =	0.2740%		
Result key:	20		
Scenario	4 Affected station	4	
Before Analysis			
Results for: 8A PA JOHNSTOWN	DTVPLN	DTVP0158	PLN
HAAT 352.0 m, ATV ERP 6.5 kW			
	POPULATION	AREA (sq km)	
within Noise Limited Contour	2769479	23804.9	
not affected by terrain losses	2556204	21140.3	
lost to NTSC IX	0	0.0	
lost to additional IX by ATV	19634	152.7	
lost to ATV IX only	19634	152.7	
lost to all IX	19634	152.7	
Potential Interfering Stations Included in above Scenario	3		
8A OH CLEVELAND	DTVPLN	DTVP0152	PLN
8A PA LANCASTER	DTVPLN	DTVP0159	PLN
8A WV LEWISBURG	BMPCDT	20040608ABO	CP
9A OH STEUBENVILLE	USERRECORD01	APP	
Percent new IX =	0.2740%		
Result key:	20		
Scenario	4 Affected station	4	
Before Analysis			
Results for: 8A PA JOHNSTOWN	DTVPLN	DTVP0158	PLN
HAAT 352.0 m, ATV ERP 6.5 kW			
	POPULATION	AREA (sq km)	
within Noise Limited Contour	2769479	23804.9	
not affected by terrain losses	2556204	21140.3	
lost to NTSC IX	0	0.0	
lost to additional IX by ATV	19634	152.7	
lost to ATV IX only	19634	152.7	
lost to all IX	19634	152.7	
Potential Interfering Stations Included in above Scenario	3		
8A OH CLEVELAND	DTVPLN	DTVP0152	PLN
8A PA LANCASTER	DTVPLN	DTVP0159	PLN
8A WV LEWISBURG	BMPCDT	20040608ABO	CP
9A OH STEUBENVILLE	USERRECORD01	APP	

Figure 3

lost to ATV IX only	19634	152.7	
lost to all IX	19634	152.7	
Potential Interfering Stations Included in above Scenario	4		
8A OH CLEVELAND	DTVPLN	DTVP0152	PLN
8A PA LANCASTER	DTVPLN	DTVP0159	PLN
8A WV LEWISBURG	DTVPLN	DTVP0172	PLN
9A OH STEUBENVILLE	DTVPLN	DTVP0214	PLN
After Analysis			
Results for: 8A PA JOHNSTOWN	DTVPLN	DTVP0158	PLN
HAAT 352.0 m, ATV ERP 6.5 kW			
	POPULATION	AREA (sq km)	
within Noise Limited Contour	2769479	23804.9	
not affected by terrain losses	2556204	21140.3	
lost to NTSC IX	0	0.0	
lost to additional IX by ATV	26585	192.9	
lost to ATV IX only	26585	192.9	
lost to all IX	26585	192.9	
Potential Interfering Stations Included in above Scenario	4		
8A OH CLEVELAND	DTVPLN	DTVP0152	PLN
8A PA LANCASTER	DTVPLN	DTVP0159	PLN
8A WV LEWISBURG	DTVPLN	DTVP0172	PLN
9A OH STEUBENVILLE	USERRECORD01	APP	
Percent new IX =	0.2740%		
Result key:	21		
Scenario	5 Affected station	4	
Before Analysis			
Results for: 8A PA JOHNSTOWN	DTVPLN	DTVP0158	PLN
HAAT 352.0 m, ATV ERP 6.5 kW			
	POPULATION	AREA (sq km)	
within Noise Limited Contour	2769479	23804.9	
not affected by terrain losses	2556204	21140.3	
lost to NTSC IX	0	0.0	
lost to additional IX by ATV	13116	152.7	
lost to ATV IX only	13116	152.7	
lost to all IX	13116	152.7	
Potential Interfering Stations Included in above Scenario	5		
8A OH CLEVELAND	BPCDT	20080311AAN	CP
8A PA LANCASTER	BPCDT	20080314ABN	CP
8A WV LEWISBURG	BMPCDT	20040608ABO	CP
9A OH STEUBENVILLE	DTVPLN	DTVP0214	PLN
After Analysis			
Results for: 8A PA JOHNSTOWN	DTVPLN	DTVP0158	PLN
HAAT 352.0 m, ATV ERP 6.5 kW			
	POPULATION	AREA (sq km)	
within Noise Limited Contour	2769479	23804.9	
not affected by terrain losses	2556204	21140.3	
lost to NTSC IX	0	0.0	
lost to additional IX by ATV	20767	196.9	
lost to ATV IX only	20767	196.9	
lost to all IX	20767	196.9	
Potential Interfering Stations Included in above Scenario	5		
8A OH CLEVELAND	BPCDT	20080311AAN	CP
8A PA LANCASTER	BPCDT	20080314ABN	CP
8A WV LEWISBURG	BMPCDT	20040608ABO	CP
9A OH STEUBENVILLE	USERRECORD01	APP	

Figure 3

Percent new IX = 0.3009%

Result key: 22  
Scenario 6 Affected station 4  
Before Analysis

Results for: 8A PA JOHNSTOWN DTVPLN DTVP0158 PLN  
HAAT 352.0 m, ATV ERP 6.5 kW

	POPULATION	AREA (sq km)
within Noise Limited Contour	2769479	23804.9
not affected by terrain losses	2556204	21140.3
lost to NTSC IX	0	0.0
lost to additional IX by ATV	13116	152.7
lost to ATV IX only	13116	152.7
lost to all IX	13116	152.7

Potential Interfering Stations Included in above Scenario 6

8A OH CLEVELAND	BPCDT	20080311AAN	CP
8A PA LANCASTER	BPCDT	20080314ABN	CP
8A WV LEWISBURG	DTVPLN	DTVP0172	PLN
9A OH STEUBENVILLE	DTVPLN	DTVP0214	PLN

After Analysis

Results for: 8A PA JOHNSTOWN DTVPLN DTVP0158 PLN  
HAAT 352.0 m, ATV ERP 6.5 kW

	POPULATION	AREA (sq km)
within Noise Limited Contour	2769479	23804.9
not affected by terrain losses	2556204	21140.3
lost to NTSC IX	0	0.0
lost to additional IX by ATV	20767	196.9
lost to ATV IX only	20767	196.9
lost to all IX	20767	196.9

Potential Interfering Stations Included in above Scenario 6

8A OH CLEVELAND	BPCDT	20080311AAN	CP
8A PA LANCASTER	BPCDT	20080314ABN	CP
8A WV LEWISBURG	DTVPLN	DTVP0172	PLN
9A OH STEUBENVILLE	USERRECORD01		APP

Percent new IX = 0.3009%

Result key: 23  
Scenario 7 Affected station 4  
Before Analysis

Results for: 8A PA JOHNSTOWN DTVPLN DTVP0158 PLN  
HAAT 352.0 m, ATV ERP 6.5 kW

	POPULATION	AREA (sq km)
within Noise Limited Contour	2769479	23804.9
not affected by terrain losses	2556204	21140.3
lost to NTSC IX	0	0.0
lost to additional IX by ATV	11765	140.7
lost to ATV IX only	11765	140.7
lost to all IX	11765	140.7

Potential Interfering Stations Included in above Scenario 7

8A OH CLEVELAND	BPCDT	20080311AAN	CP
8A PA LANCASTER	DTVPLN	DTVP0159	PLN
8A WV LEWISBURG	BMPCDT	20040608ABO	CP
9A OH STEUBENVILLE	DTVPLN	DTVP0214	PLN

After Analysis

Results for: 8A PA JOHNSTOWN DTVPLN DTVP0158 PLN  
HAAT 352.0 m, ATV ERP 6.5 kW

	POPULATION	AREA (sq km)
within Noise Limited Contour	2769479	23804.9
not affected by terrain losses	2556204	21140.3
lost to NTSC IX	0	0.0
lost to additional IX by ATV	19416	184.9
lost to ATV IX only	19416	184.9
lost to all IX	19416	184.9

Potential Interfering Stations Included in above Scenario 8

8A OH CLEVELAND	BPCDT	20080311AAN	CP
8A PA LANCASTER	DTVPLN	DTVP0159	PLN
8A WV LEWISBURG	DTVPLN	DTVP0172	PLN
9A OH STEUBENVILLE	DTVPLN	DTVP0214	PLN

After Analysis

Results for: 8A PA JOHNSTOWN DTVPLN DTVP0158 PLN  
HAAT 352.0 m, ATV ERP 6.5 kW

	POPULATION	AREA (sq km)
within Noise Limited Contour	2769479	23804.9
not affected by terrain losses	2556204	21140.3
lost to NTSC IX	0	0.0
lost to additional IX by ATV	19416	184.9
lost to ATV IX only	19416	184.9
lost to all IX	19416	184.9

Potential Interfering Stations Included in above Scenario 8

8A OH CLEVELAND	BPCDT	20080311AAN	CP
8A PA LANCASTER	DTVPLN	DTVP0159	PLN
8A WV LEWISBURG	DTVPLN	DTVP0172	PLN
9A OH STEUBENVILLE	USERRECORD01		APP

Percent new IX = 0.3007%

Worst case new IX 0.3009% Scenario 5

#####

Analysis of Interference to Affected Station 5

Analysis of current record

Channel	Call	City/State	Application	Ref. No.
09	WUSA	WASHINGTON DC	BMPCDT	-20080425ABL

Stations Potentially Affecting This Station

Figure 3

not affected by terrain losses 2556204 21140.3  
lost to NTSC IX 0 0.0  
lost to additional IX by ATV 19416 184.9  
lost to ATV IX only 19416 184.9  
lost to all IX 19416 184.9

Potential Interfering Stations Included in above Scenario 7

8A OH CLEVELAND	BPCDT	20080311AAN	CP
8A PA LANCASTER	DTVPLN	DTVP0159	PLN
8A WV LEWISBURG	BMPCDT	20040608ABO	CP
9A OH STEUBENVILLE	USERRECORD01		APP

Percent new IX = 0.3007%

Result key: 24  
Scenario 8 Affected station 4  
Before Analysis

Results for: 8A PA JOHNSTOWN DTVPLN DTVP0158 PLN  
HAAT 352.0 m, ATV ERP 6.5 kW

	POPULATION	AREA (sq km)
within Noise Limited Contour	2769479	23804.9
not affected by terrain losses	2556204	21140.3
lost to NTSC IX	0	0.0
lost to additional IX by ATV	11765	140.7
lost to ATV IX only	11765	140.7
lost to all IX	11765	140.7

Potential Interfering Stations Included in above Scenario 8

8A OH CLEVELAND	BPCDT	20080311AAN	CP
8A PA LANCASTER	DTVPLN	DTVP0159	PLN
8A WV LEWISBURG	DTVPLN	DTVP0172	PLN
9A OH STEUBENVILLE	DTVPLN	DTVP0214	PLN

After Analysis

Results for: 8A PA JOHNSTOWN DTVPLN DTVP0158 PLN  
HAAT 352.0 m, ATV ERP 6.5 kW

	POPULATION	AREA (sq km)
within Noise Limited Contour	2769479	23804.9
not affected by terrain losses	2556204	21140.3
lost to NTSC IX	0	0.0
lost to additional IX by ATV	19416	184.9
lost to ATV IX only	19416	184.9
lost to all IX	19416	184.9

Potential Interfering Stations Included in above Scenario 8

8A OH CLEVELAND	BPCDT	20080311AAN	CP
8A PA LANCASTER	DTVPLN	DTVP0159	PLN
8A WV LEWISBURG	DTVPLN	DTVP0172	PLN
9A OH STEUBENVILLE	USERRECORD01		APP

Percent new IX = 0.3007%

Worst case new IX 0.3009% Scenario 5

#####

Analysis of Interference to Affected Station 5

Analysis of current record

Channel	Call	City/State	Application	Ref. No.
09	WUSA	WASHINGTON DC	BMPCDT	-20080425ABL

Stations Potentially Affecting This Station



Figure 3

Chan	Call	City/State	Dist(km)	Status	Application	Ref. No.
08	WWCP-TV	JOHNSTOWN PA	224.1	CP	BPCDT	-20080408ABF
08	WWCP-TV	JOHNSTOWN PA	224.1	PLN	DTVPLN	-DTVP0158
08	WGAL	LANCASTER PA	126.8	CP	BPCDT	-20080314ABN
08	WGAL	LANCASTER PA	126.8	PLN	DTVPLN	-DTVP0159
09	WSKY-TV	MANTEO NC	278.2	PLN	DTVPLN	-DTVP0207
09	WTOV-TV	STEUBENVILLE OH	340.2	PLN	DTVPLN	-DTVP0214
09	WBPH-TV	BETHLEHEM PA	227.6	LIC	BLCDT	-20060609AAH
09	WBPH-TV	BETHLEHEM PA	227.6	PLN	DTVPLN	-DTVP0217
10	WHYM-TV	HARRISBURG PA	152.2	LIC	BLCDT	-20040812AAH
10	WHYM-TV	HARRISBURG PA	152.2	PLN	DTVPLN	-DTVP0289
09	WTOV-TV	STEUBENVILLE OH	340.2	APP	USERRECORD-01	

Total scenarios = 4

Result key: 25  
 Scenario 1 Affected station 5  
 Before Analysis

Results for: 9A DC WASHINGTON BPCDT 20080425ABL CP  
 HAAT 235.0 m, ATV ERP 12.6 kW

	POPULATION	AREA (sq km)
within Noise Limited Contour	7353356	25990.7
not affected by terrain losses	7250428	24214.5
lost to NTSC IX	0	0.0
lost to additional IX by ATV	16656	220.0
lost to ATV IX only	16656	220.0
lost to all IX	16656	220.0

Potential Interfering Stations Included in above Scenario 1

8A PA LANCASTER	BPCDT	20080314ABN	CP
9A NC MANTEO	DTVPLN	DTVP0207	PLN
9A PA BETHLEHEM	BLCDT	20060609AAH	LIC
9A OH STEUBENVILLE	DTVPLN	DTVP0214	PLN

After Analysis

Results for: 9A DC WASHINGTON BPCDT 20080425ABL CP  
 HAAT 235.0 m, ATV ERP 12.6 kW

	POPULATION	AREA (sq km)
within Noise Limited Contour	7353356	25990.7
not affected by terrain losses	7250428	24214.5
lost to NTSC IX	0	0.0
lost to additional IX by ATV	18138	236.0
lost to ATV IX only	18138	236.0
lost to all IX	18138	236.0

Potential Interfering Stations Included in above Scenario 1

8A PA LANCASTER	BPCDT	20080314ABN	CP
9A NC MANTEO	DTVPLN	DTVP0207	PLN
9A PA BETHLEHEM	BLCDT	20060609AAH	LIC
9A OH STEUBENVILLE	USERRECORD01		APP

Percent new IX = 0.0205%

Result key: 26  
 Scenario 2 Affected station 5  
 Before Analysis

Results for: 9A DC WASHINGTON BPCDT 20080425ABL CP  
 HAAT 235.0 m, ATV ERP 12.6 kW

	POPULATION	AREA (sq km)
within Noise Limited Contour	7353356	25990.7
not affected by terrain losses	7250428	24214.5
lost to NTSC IX	0	0.0
lost to additional IX by ATV	16656	220.0
lost to ATV IX only	16656	220.0
lost to all IX	16656	220.0

Figure 3

Potential Interfering Stations Included in above Scenario 2

8A PA LANCASTER	BPCDT	20080314ABN	CP
9A NC MANTEO	DTVPLN	DTVP0207	PLN
9A PA BETHLEHEM	DTVPLN	DTVP0217	PLN
9A OH STEUBENVILLE	DTVPLN	DTVP0214	PLN

After Analysis

Results for: 9A DC WASHINGTON BPCDT 20080425ABL CP  
 HAAT 235.0 m, ATV ERP 12.6 kW

	POPULATION	AREA (sq km)
within Noise Limited Contour	7353356	25990.7
not affected by terrain losses	7250428	24214.5
lost to NTSC IX	0	0.0
lost to additional IX by ATV	18138	236.0
lost to ATV IX only	18138	236.0
lost to all IX	18138	236.0

Potential Interfering Stations Included in above Scenario 2

8A PA LANCASTER	BPCDT	20080314ABN	CP
9A NC MANTEO	DTVPLN	DTVP0207	PLN
9A PA BETHLEHEM	DTVPLN	DTVP0217	PLN
9A OH STEUBENVILLE	USERRECORD01		APP

Percent new IX = 0.0205%

Result key: 27  
 Scenario 3 Affected station 5  
 Before Analysis

Results for: 9A DC WASHINGTON BPCDT 20080425ABL CP  
 HAAT 235.0 m, ATV ERP 12.6 kW

	POPULATION	AREA (sq km)
within Noise Limited Contour	7353356	25990.7
not affected by terrain losses	7250428	24214.5
lost to NTSC IX	0	0.0
lost to additional IX by ATV	16214	216.0
lost to ATV IX only	16214	216.0
lost to all IX	16214	216.0

Potential Interfering Stations Included in above Scenario 3

8A PA LANCASTER	DTVPLN	DTVP0159	PLN
9A NC MANTEO	DTVPLN	DTVP0207	PLN
9A PA BETHLEHEM	BLCDT	20060609AAH	LIC
9A OH STEUBENVILLE	DTVPLN	DTVP0214	PLN

After Analysis

Results for: 9A DC WASHINGTON BPCDT 20080425ABL CP  
 HAAT 235.0 m, ATV ERP 12.6 kW

	POPULATION	AREA (sq km)
within Noise Limited Contour	7353356	25990.7
not affected by terrain losses	7250428	24214.5
lost to NTSC IX	0	0.0
lost to additional IX by ATV	17696	232.0
lost to ATV IX only	17696	232.0
lost to all IX	17696	232.0

Potential Interfering Stations Included in above Scenario 3

8A PA LANCASTER	DTVPLN	DTVP0159	PLN
9A NC MANTEO	DTVPLN	DTVP0207	PLN
9A PA BETHLEHEM	BLCDT	20060609AAH	LIC
9A OH STEUBENVILLE	USERRECORD01		APP

Percent new IX = 0.0205%

Figure 3

Result key: 28  
 Scenario 4 Affected station 5  
 Before Analysis

Results for: 9A DC WASHINGTON BMDPDT 20080425ABL CP  
 HAAT 235.0 m, ATV ERP 12.6 kW

	POPULATION	AREA (sq km)
within Noise Limited Contour	7353356	25990.7
not affected by terrain losses	7250428	24214.5
lost to NTSC IX	0	0.0
lost to additional IX by ATV	16214	216.0
lost to ATV IX only	16214	216.0
lost to all IX	16214	216.0

Potential Interfering Stations Included in above Scenario 4

8A PA LANCASTER	DTVPLN	DTVP0159	PLN
9A NC MANTEO	DTVPLN	DTVP0207	PLN
9A PA BETHLEHEM	DTVPLN	DTVP0217	PLN
9A OH STEUBENVILLE	DTVPLN	DTVP0214	PLN

After Analysis

Results for: 9A DC WASHINGTON BMDPDT 20080425ABL CP  
 HAAT 235.0 m, ATV ERP 12.6 kW

	POPULATION	AREA (sq km)
within Noise Limited Contour	7353356	25990.7
not affected by terrain losses	7250428	24214.5
lost to NTSC IX	0	0.0
lost to additional IX by ATV	17696	232.0
lost to ATV IX only	17696	232.0
lost to all IX	17696	232.0

Potential Interfering Stations Included in above Scenario 4

8A PA LANCASTER	DTVPLN	DTVP0159	PLN
9A NC MANTEO	DTVPLN	DTVP0207	PLN
9A PA BETHLEHEM	DTVPLN	DTVP0217	PLN
9A OH STEUBENVILLE	USERRECORD01	APP	

Percent new IX = 0.0205%

Worst case new IX 0.0205% Scenario 1

#####

Analysis of Interference to Affected Station 6

Channel	Call	City/State	Application	Ref. No.
09	WUSA	WASHINGTON DC	DTVPLN	-DTVP0186

Stations Potentially Affecting This Station

Chan	Call	City/State	Dist(km)	Status	Application	Ref. No.
08	WWCP-TV	JOHNSTOWN PA	224.1	CP	BPCDT	-20080408ABF
08	WWCP-TV	JOHNSTOWN PA	224.1	PLN	DTVPLN	-DTVP0158
08	WGAL	LANCASTER PA	126.8	CP	BPCDT	-20080314ABN
08	WGAL	LANCASTER PA	126.8	PLN	DTVPLN	-DTVP0159
09	WSKY-TV	MANTEO NC	278.2	PLN	DTVPLN	-DTVP0207
09	WTOV-TV	STEUBENVILLE OH	340.2	PLN	DTVPLN	-DTVP0214
09	WBPH-TV	BETHLEHEM PA	227.6	LIC	BLCDT	-20060609AAH
09	WBPH-TV	BETHLEHEM PA	227.6	PLN	DTVPLN	-DTVP0217
10	WHTM-TV	HARRISBURG PA	152.2	LIC	BLCDT	-20040812AAH
10	WHTM-TV	HARRISBURG PA	152.2	PLN	DTVPLN	-DTVP0289
09	WTOV-TV	STEUBENVILLE OH	340.2	APP	USERRECORD-01	

Total scenarios = 4

Figure 3

Result key: 29  
 Scenario 1 Affected station 6  
 Before Analysis

Results for: 9A DC WASHINGTON DTVPLN DTVP0186 PLN  
 HAAT 235.0 m, ATV ERP 13.6 kW

	POPULATION	AREA (sq km)
within Noise Limited Contour	7351660	26015.6
not affected by terrain losses	7251458	24259.4
lost to NTSC IX	0	0.0
lost to additional IX by ATV	13401	212.0
lost to ATV IX only	13401	212.0
lost to all IX	13401	212.0

Potential Interfering Stations Included in above Scenario 1

8A PA LANCASTER	BPCDT	20080314ABN	CP
9A NC MANTEO	DTVPLN	DTVP0207	PLN
9A PA BETHLEHEM	BLCDT	20060609AAH	LIC
9A OH STEUBENVILLE	DTVPLN	DTVP0214	PLN

After Analysis

Results for: 9A DC WASHINGTON DTVPLN DTVP0186 PLN  
 HAAT 235.0 m, ATV ERP 13.6 kW

	POPULATION	AREA (sq km)
within Noise Limited Contour	7351660	26015.6
not affected by terrain losses	7251458	24259.4
lost to NTSC IX	0	0.0
lost to additional IX by ATV	14556	232.0
lost to ATV IX only	14556	232.0
lost to all IX	14556	232.0

Potential Interfering Stations Included in above Scenario 1

8A PA LANCASTER	BPCDT	20080314ABN	CP
9A NC MANTEO	DTVPLN	DTVP0207	PLN
9A PA BETHLEHEM	BLCDT	20060609AAH	LIC
9A OH STEUBENVILLE	USERRECORD01	APP	

Percent new IX = 0.0160%

Result key: 30  
 Scenario 2 Affected station 6  
 Before Analysis

Results for: 9A DC WASHINGTON DTVPLN DTVP0186 PLN  
 HAAT 235.0 m, ATV ERP 13.6 kW

	POPULATION	AREA (sq km)
within Noise Limited Contour	7351660	26015.6
not affected by terrain losses	7251458	24259.4
lost to NTSC IX	0	0.0
lost to additional IX by ATV	13401	212.0
lost to ATV IX only	13401	212.0
lost to all IX	13401	212.0

Potential Interfering Stations Included in above Scenario 2

8A PA LANCASTER	BPCDT	20080314ABN	CP
9A NC MANTEO	DTVPLN	DTVP0207	PLN
9A PA BETHLEHEM	DTVPLN	DTVP0217	PLN
9A OH STEUBENVILLE	DTVPLN	DTVP0214	PLN

After Analysis

Results for: 9A DC WASHINGTON DTVPLN DTVP0186 PLN  
 HAAT 235.0 m, ATV ERP 13.6 kW

	POPULATION	AREA (sq km)
within Noise Limited Contour	7351660	26015.6
not affected by terrain losses	7251458	24259.4

Figure 3

```

lost to NTSC IX                0          0.0
lost to additional IX by ATV    14556      232.0
lost to ATV IX only             14556      232.0
lost to all IX                 14556      232.0

Potential Interfering Stations Included in above Scenario      2

8A PA LANCASTER                BPCDT      20080314ABN    CP
9A NC MANTEO                   DTVPLN    DTVP0207      PLN
9A PA BETHLEHEM                DTVPLN    DTVP0217      PLN
9A OH STEUBENVILLE             USERRECORD01  APP

Percent new IX =          0.0160%

Result key:                    31
Scenario                        3  Affected station          6
Before Analysis

Results for:  9A DC WASHINGTON      DTVPLN    DTVP0186      PLN
HAAT  235.0 m, ATV ERP  13.6 kW

      POPULATION    AREA (sq km)
within Noise Limited Contour    7351660    26015.6
not affected by terrain losses   7251458    24259.4
lost to NTSC IX                  0          0.0
lost to additional IX by ATV     13401      212.0
lost to ATV IX only              13401      212.0
lost to all IX                  13401      212.0

Potential Interfering Stations Included in above Scenario      3

8A PA LANCASTER                DTVPLN    DTVP0159      PLN
9A NC MANTEO                   DTVPLN    DTVP0207      PLN
9A PA BETHLEHEM                BLCDDT    20060609AAH    LIC
9A OH STEUBENVILLE             DTVPLN    DTVP0214      PLN

After Analysis

Results for:  9A DC WASHINGTON      DTVPLN    DTVP0186      PLN
HAAT  235.0 m, ATV ERP  13.6 kW

      POPULATION    AREA (sq km)
within Noise Limited Contour    7351660    26015.6
not affected by terrain losses   7251458    24259.4
lost to NTSC IX                  0          0.0
lost to additional IX by ATV     14556      232.0
lost to ATV IX only              14556      232.0
lost to all IX                  14556      232.0

Potential Interfering Stations Included in above Scenario      3

8A PA LANCASTER                DTVPLN    DTVP0159      PLN
9A NC MANTEO                   DTVPLN    DTVP0207      PLN
9A PA BETHLEHEM                BLCDDT    20060609AAH    LIC
9A OH STEUBENVILLE             USERRECORD01  APP

Percent new IX =          0.0160%

Result key:                    32
Scenario                        4  Affected station          6
Before Analysis

Results for:  9A DC WASHINGTON      DTVPLN    DTVP0186      PLN
HAAT  235.0 m, ATV ERP  13.6 kW

      POPULATION    AREA (sq km)
within Noise Limited Contour    7351660    26015.6
not affected by terrain losses   7251458    24259.4
lost to NTSC IX                  0          0.0
lost to additional IX by ATV     13401      212.0
lost to ATV IX only              13401      212.0
lost to all IX                  13401      212.0

Potential Interfering Stations Included in above Scenario      4

```

Figure 3

```

8A PA LANCASTER                DTVPLN    DTVP0159      PLN
9A NC MANTEO                   DTVPLN    DTVP0207      PLN
9A PA BETHLEHEM                DTVPLN    DTVP0217      PLN
9A OH STEUBENVILLE             DTVPLN    DTVP0214      PLN

After Analysis

Results for:  9A DC WASHINGTON      DTVPLN    DTVP0186      PLN
HAAT  235.0 m, ATV ERP  13.6 kW

      POPULATION    AREA (sq km)
within Noise Limited Contour    7351660    26015.6
not affected by terrain losses   7251458    24259.4
lost to NTSC IX                  0          0.0
lost to additional IX by ATV     14556      232.0
lost to ATV IX only              14556      232.0
lost to all IX                  14556      232.0

Potential Interfering Stations Included in above Scenario      4

8A PA LANCASTER                DTVPLN    DTVP0159      PLN
9A NC MANTEO                   DTVPLN    DTVP0207      PLN
9A PA BETHLEHEM                DTVPLN    DTVP0217      PLN
9A OH STEUBENVILLE             USERRECORD01  APP

Percent new IX =          0.0160%

Worst case new IX      0.0160% Scenario      1

#####

Analysis of Interference to Affected Station      7

Analysis of current record
Channel    Call      City/State      Application Ref. No.
10         WOIO      SHAKER HEIGHTS OH      BLCDDT      -19991110AAR

Stations Potentially Affecting This Station

Chan    Call      City/State      Dist(km) Status Application Ref. No.
09      WTVQ-TV    STEUBENVILLE OH      147.1  PLN      DTVPLN      -DTV0214
10      WILX-TV    ONONDAGA MI        265.3  PLN      DTVPLN      -DTV0266
10      WILX-TV    ONONDAGA MI        265.3  CP        BPCDDT      -20080403ADB
10      WHEC-TV    ROCHESTER NY       390.0  APP      BPCDDT      -20080425AAZ
10      WHEC-TV    ROCHESTER NY       390.0  PLN      DTVPLN      -DTV0283
10      WCPO-TV    CINCINNATI OH      346.1  CP        BPCDDT      -20080306AAP
10      WCPO-TV    CINCINNATI OH      346.1  PLN      DTVPLN      -DTV0284
10      WCPO-TV    CINCINNATI OH      346.1  LIC      BLCDDT      -20041230ACA
10      WHTM-TV    HARRISBURG PA      416.3  LIC      BLCDDT      -20040812AAH
10      WHTM-TV    HARRISBURG PA      416.3  PLN      DTVPLN      -DTV0289
10      WVFX      CLARKSBURG WV       258.7  CP MOD    BPCDDT      -20020930AAV
10      WVFX      CLARKSBURG WV       258.7  PLN      DTVPLN      -DTV0300
10      WSWP-TV    GRANDVIEW WV       392.7  CP MOD    BPCDDT      -20080214ACT
10      WSWP-TV    GRANDVIEW WV       392.7  PLN      DTVPLN      -DTV0301
11      WTOL      TOLEDO OH          143.7  APP      BPCDDT      -20080403ACL
11      WTOL      TOLEDO OH          143.7  PLN      DTVPLN      -DTV0336
11      WPCW      JEANNETTE PA       172.2  CP        BPCDDT      -20080523ADD
09      WTVQ-TV    STEUBENVILLE OH      147.1  APP      USERRECORD-01

Proposal causes no interference

#####

Analysis of Interference to Affected Station      8

Analysis of current record
Channel    Call      City/State      Application Ref. No.
10         WOIO      SHAKER HEIGHTS OH      DTVPLN      -DTV0285

```

Figure 3

Stations Potentially Affecting This Station

Chan	Call	City/State	Dist(km)	Status	Application Ref. No.
09	WTOV-TV	STEUBENVILLE OH	147.1	PLN	DTVPLN -DTVP0214
10	WILX-TV	ONONDAGA MI	265.3	PLN	DTVPLN -DTVP0266
10	WILX-TV	ONONDAGA MI	265.3	CP	BPCDT -20080403ADB
10	WHEC-TV	ROCHESTER NY	390.0	APP	BPCDT -20080425AAZ
10	WHEC-TV	ROCHESTER NY	390.0	PLN	DTVPLN -DTVP0283
10	WCPO-TV	CINCINNATI OH	346.1	CP	BPCDT -20080306AAP
10	WCPO-TV	CINCINNATI OH	346.1	PLN	DTVPLN -DTVP0284
10	WCPO-TV	CINCINNATI OH	346.1	LIC	BLCDT -20041230ACA
10	WHTM-TV	HARRISBURG PA	416.3	LIC	BLCDT -20040812AAH
10	WHTM-TV	HARRISBURG PA	416.3	PLN	DTVPLN -DTVP0289
10	WVFX	CLARKSBURG WV	258.7	CP MOD	BMPEDT -20020930AAV
10	WVFX	CLARKSBURG WV	258.7	PLN	DTVPLN -DTVP0300
10	WSPV-TV	GRANDVIEW WV	392.7	CP MOD	BMPEDT -20080214ACT
10	WSPV-TV	GRANDVIEW WV	392.7	PLN	DTVPLN -DTVP0301
11	WTOL	TOLEDO OH	143.7	APP	BPCDT -20080403ACL
11	WTOL	TOLEDO OH	143.7	PLN	DTVPLN -DTVP0336
11	WPCW	JEANNETTE PA	172.2	CP	BPCDT -20080523ADL
09	WTOV-TV	STEUBENVILLE OH	147.1	APP	USERRECORD-01

Proposal causes no interference

#####

#### Analysis of Interference to Affected Station 9

Analysis of current record

Channel	Call	City/State	Application Ref. No.
10	WVFX	CLARKSBURG WV	BMPEDT -20020930AAV

#### Stations Potentially Affecting This Station

Chan	Call	City/State	Dist(km)	Status	Application Ref. No.
09	WTOV-TV	STEUBENVILLE OH	118.2	PLN	DTVPLN -DTVP0214
10	WCPO-TV	CINCINNATI OH	358.3	CP	BPCDT -20080306AAP
10	WCPO-TV	CINCINNATI OH	358.4	PLN	DTVPLN -DTVP0284
10	WCPO-TV	CINCINNATI OH	358.3	LIC	BLCDT -20041230ACA
10	WOIO	SHAKER HEIGHTS OH	258.7	LIC	BLCDT -19991110AAR
10	WOIO	SHAKER HEIGHTS OH	258.7	PLN	DTVPLN -DTVP0285
10	WHTM-TV	HARRISBURG PA	310.9	LIC	BLCDT -20040812AAH
10	WHTM-TV	HARRISBURG PA	310.9	PLN	DTVPLN -DTVP0289
10	WSPV-TV	GRANDVIEW WV	165.9	CP MOD	BMPEDT -20080214ACT
10	WSPV-TV	GRANDVIEW WV	165.9	PLN	DTVPLN -DTVP0301
11	WPCW	JEANNETTE PA	135.5	CP	BPCDT -20080523ADL
11	WPCW	JEANNETTE PA	140.6	PLN	DTVPLN -DTVP0342
11	WVPT	STAUNTON VA	154.6	LIC	BLEDT -20021220ADX
11	WVPT	STAUNTON VA	154.6	PLN	DTVPLN -DTVP0354
09	WTOV-TV	STEUBENVILLE OH	118.2	APP	USERRECORD-01

Total scenarios = 24

Result key: 33  
Scenario 1 Affected station 9  
Before Analysis

Results for: 10A WV CLARKSBURG BMPEDT 20020930AAV CP

HAAT	235.0 m, ATV ERP	30.0 kW	POPULATION	AREA (sq km)
within Noise Limited Contour			731402	25497.8
not affected by terrain losses			595303	23053.5
lost to NTSC IX			0	0.0
lost to additional IX by ATV			27752	1083.2
lost to ATV IX only			27752	1083.2
lost to all IX			27752	1083.2

Potential Interfering Stations Included in above Scenario 1

Figure 3

10A OH CINCINNATI	BPCDT	20080306AAP	CP
10A OH SHAKER HEIGHTS	BLCDT	19991110AAR	LIC
10A PA HARRISBURG	BLCDT	20040812AAH	LIC
10A WV GRANDVIEW	BMPEDT	20080214ACT	CP
9A OH STEUBENVILLE	DTVPLN	DTVP0214	PLN

#### After Analysis

Results for: 10A WV CLARKSBURG BMPEDT 20020930AAV CP

HAAT	235.0 m, ATV ERP	30.0 kW	POPULATION	AREA (sq km)
within Noise Limited Contour			731402	25497.8
not affected by terrain losses			595303	23053.5
lost to NTSC IX			0	0.0
lost to additional IX by ATV			29569	1115.4
lost to ATV IX only			29569	1115.4
lost to all IX			29569	1115.4

Potential Interfering Stations Included in above Scenario 1

10A OH CINCINNATI	BPCDT	20080306AAP	CP
10A OH SHAKER HEIGHTS	BLCDT	19991110AAR	LIC
10A PA HARRISBURG	BLCDT	20040812AAH	LIC
10A WV GRANDVIEW	BMPEDT	20080214ACT	CP
9A OH STEUBENVILLE	USERRECORD01		APP

Percent new IX = 0.3201%

Result key: 34  
Scenario 2 Affected station 9  
Before Analysis

Results for: 10A WV CLARKSBURG BMPEDT 20020930AAV CP

HAAT	235.0 m, ATV ERP	30.0 kW	POPULATION	AREA (sq km)
within Noise Limited Contour			731402	25497.8
not affected by terrain losses			595303	23053.5
lost to NTSC IX			0	0.0
lost to additional IX by ATV			29189	1159.7
lost to ATV IX only			29189	1159.7
lost to all IX			29189	1159.7

Potential Interfering Stations Included in above Scenario 2

10A OH CINCINNATI	BPCDT	20080306AAP	CP
10A OH SHAKER HEIGHTS	BLCDT	19991110AAR	LIC
10A PA HARRISBURG	BLCDT	20040812AAH	LIC
10A WV GRANDVIEW	DTVPLN	DTVP0301	PLN
9A OH STEUBENVILLE	DTVPLN	DTVP0214	PLN

#### After Analysis

Results for: 10A WV CLARKSBURG BMPEDT 20020930AAV CP

HAAT	235.0 m, ATV ERP	30.0 kW	POPULATION	AREA (sq km)
within Noise Limited Contour			731402	25497.8
not affected by terrain losses			595303	23053.5
lost to NTSC IX			0	0.0
lost to additional IX by ATV			31006	1191.9
lost to ATV IX only			31006	1191.9
lost to all IX			31006	1191.9

Potential Interfering Stations Included in above Scenario 2

10A OH CINCINNATI	BPCDT	20080306AAP	CP
10A OH SHAKER HEIGHTS	BLCDT	19991110AAR	LIC
10A PA HARRISBURG	BLCDT	20040812AAH	LIC
10A WV GRANDVIEW	DTVPLN	DTVP0301	PLN
9A OH STEUBENVILLE	USERRECORD01		APP

Figure 3

Percent new IX = 0.3210%

Result key: 35  
Scenario 3 Affected station 9  
Before Analysis

Results for: 10A WV CLARKSBURG BMPCDT 20020930AAV CP  
HAAT 235.0 m, ATV ERP 30.0 kW

	POPULATION	AREA (sq km)
within Noise Limited Contour	731402	25497.8
not affected by terrain losses	595303	23053.5
lost to NTSC IX	0	0.0
lost to additional IX by ATV	27752	1083.2
lost to ATV IX only	27752	1083.2
lost to all IX	27752	1083.2

Potential Interfering Stations Included in above Scenario 3

10A OH CINCINNATI	BPCDT	20080306AAP	CP
10A OH SHAKER HEIGHTS	BLCDT	19991110AAR	LIC
10A PA HARRISBURG	DTVPLN	DTVP0289	PLN
10A WV GRANDVIEW	BMPEDT	20080214ACT	CP
9A OH STEUBENVILLE	DTVPLN	DTVP0214	PLN

After Analysis

Results for: 10A WV CLARKSBURG BMPCDT 20020930AAV CP  
HAAT 235.0 m, ATV ERP 30.0 kW

	POPULATION	AREA (sq km)
within Noise Limited Contour	731402	25497.8
not affected by terrain losses	595303	23053.5
lost to NTSC IX	0	0.0
lost to additional IX by ATV	29569	1115.4
lost to ATV IX only	29569	1115.4
lost to all IX	29569	1115.4

Potential Interfering Stations Included in above Scenario 3

10A OH CINCINNATI	BPCDT	20080306AAP	CP
10A OH SHAKER HEIGHTS	BLCDT	19991110AAR	LIC
10A PA HARRISBURG	DTVPLN	DTVP0289	PLN
10A WV GRANDVIEW	BMPEDT	20080214ACT	CP
9A OH STEUBENVILLE	USERRECORD01		APP

Percent new IX = 0.3201%

Result key: 36  
Scenario 4 Affected station 9  
Before Analysis

Results for: 10A WV CLARKSBURG BMPCDT 20020930AAV CP  
HAAT 235.0 m, ATV ERP 30.0 kW

	POPULATION	AREA (sq km)
within Noise Limited Contour	731402	25497.8
not affected by terrain losses	595303	23053.5
lost to NTSC IX	0	0.0
lost to additional IX by ATV	29189	1159.7
lost to ATV IX only	29189	1159.7
lost to all IX	29189	1159.7

Potential Interfering Stations Included in above Scenario 4

10A OH CINCINNATI	BPCDT	20080306AAP	CP
10A OH SHAKER HEIGHTS	BLCDT	19991110AAR	LIC
10A PA HARRISBURG	DTVPLN	DTVP0289	PLN
10A WV GRANDVIEW	DTVPLN	DTVP0301	PLN
9A OH STEUBENVILLE	DTVPLN	DTVP0214	PLN

After Analysis

Results for: 10A WV CLARKSBURG BMPCDT 20020930AAV CP

Figure 3

HAAT 235.0 m, ATV ERP 30.0 kW

	POPULATION	AREA (sq km)
within Noise Limited Contour	731402	25497.8
not affected by terrain losses	595303	23053.5
lost to NTSC IX	0	0.0
lost to additional IX by ATV	31006	1191.9
lost to ATV IX only	31006	1191.9
lost to all IX	31006	1191.9

Potential Interfering Stations Included in above Scenario 4

10A OH CINCINNATI	BPCDT	20080306AAP	CP
10A OH SHAKER HEIGHTS	BLCDT	19991110AAR	LIC
10A PA HARRISBURG	DTVPLN	DTVP0289	PLN
10A WV GRANDVIEW	DTVPLN	DTVP0301	PLN
9A OH STEUBENVILLE	USERRECORD01		APP

Percent new IX = 0.3210%

Result key: 37  
Scenario 5 Affected station 9  
Before Analysis

Results for: 10A WV CLARKSBURG BMPCDT 20020930AAV CP  
HAAT 235.0 m, ATV ERP 30.0 kW

	POPULATION	AREA (sq km)
within Noise Limited Contour	731402	25497.8
not affected by terrain losses	595303	23053.5
lost to NTSC IX	0	0.0
lost to additional IX by ATV	27752	1083.2
lost to ATV IX only	27752	1083.2
lost to all IX	27752	1083.2

Potential Interfering Stations Included in above Scenario 5

10A OH CINCINNATI	BPCDT	20080306AAP	CP
10A OH SHAKER HEIGHTS	DTVPLN	DTVP0285	PLN
10A PA HARRISBURG	BLCDT	20040812AAH	LIC
10A WV GRANDVIEW	BMPEDT	20080214ACT	CP
9A OH STEUBENVILLE	DTVPLN	DTVP0214	PLN

After Analysis

Results for: 10A WV CLARKSBURG BMPCDT 20020930AAV CP  
HAAT 235.0 m, ATV ERP 30.0 kW

	POPULATION	AREA (sq km)
within Noise Limited Contour	731402	25497.8
not affected by terrain losses	595303	23053.5
lost to NTSC IX	0	0.0
lost to additional IX by ATV	29569	1115.4
lost to ATV IX only	29569	1115.4
lost to all IX	29569	1115.4

Potential Interfering Stations Included in above Scenario 5

10A OH CINCINNATI	BPCDT	20080306AAP	CP
10A OH SHAKER HEIGHTS	DTVPLN	DTVP0285	PLN
10A PA HARRISBURG	BLCDT	20040812AAH	LIC
10A WV GRANDVIEW	BMPEDT	20080214ACT	CP
9A OH STEUBENVILLE	USERRECORD01		APP

Percent new IX = 0.3201%

Result key: 38  
Scenario 6 Affected station 9  
Before Analysis

Results for: 10A WV CLARKSBURG BMPCDT 20020930AAV CP  
HAAT 235.0 m, ATV ERP 30.0 kW

	POPULATION	AREA (sq km)
within Noise Limited Contour	731402	25497.8

Figure 3

not affected by terrain losses	595303	23053.5	
lost to NTSC IX	0	0.0	
lost to additional IX by ATV	29189	1159.7	
lost to ATV IX only	29189	1159.7	
lost to all IX	29189	1159.7	
Potential Interfering Stations Included in above Scenario	6		
10A OH CINCINNATI	BPCDT	20080306AAP	CP
10A OH SHAKER HEIGHTS	DTVPLN	DTVP0285	PLN
10A PA HARRISBURG	BLCDT	20040812AAH	LIC
10A WV GRANDVIEW	DTVPLN	DTVP0301	PLN
9A OH STEUBENVILLE	DTVPLN	DTVP0214	PLN
After Analysis			
Results for: 10A WV CLARKSBURG	BMPCDT	20020930AAV	CP
HAAT 235.0 m, ATV ERP 30.0 kW			
	POPULATION	AREA (sq km)	
within Noise Limited Contour	731402	25497.8	
not affected by terrain losses	595303	23053.5	
lost to NTSC IX	0	0.0	
lost to additional IX by ATV	31006	1191.9	
lost to ATV IX only	31006	1191.9	
lost to all IX	31006	1191.9	
Potential Interfering Stations Included in above Scenario	6		
10A OH CINCINNATI	BPCDT	20080306AAP	CP
10A OH SHAKER HEIGHTS	DTVPLN	DTVP0285	PLN
10A PA HARRISBURG	BLCDT	20040812AAH	LIC
10A WV GRANDVIEW	DTVPLN	DTVP0301	PLN
9A OH STEUBENVILLE	USERRECORD01		APP
Percent new IX =	0.3210%		
Result key:	39		
Scenario	7 Affected station	9	
Before Analysis			
Results for: 10A WV CLARKSBURG	BMPCDT	20020930AAV	CP
HAAT 235.0 m, ATV ERP 30.0 kW			
	POPULATION	AREA (sq km)	
within Noise Limited Contour	731402	25497.8	
not affected by terrain losses	595303	23053.5	
lost to NTSC IX	0	0.0	
lost to additional IX by ATV	27752	1083.2	
lost to ATV IX only	27752	1083.2	
lost to all IX	27752	1083.2	
Potential Interfering Stations Included in above Scenario	7		
10A OH CINCINNATI	BPCDT	20080306AAP	CP
10A OH SHAKER HEIGHTS	DTVPLN	DTVP0285	PLN
10A PA HARRISBURG	DTVPLN	DTVP0289	PLN
10A WV GRANDVIEW	BMPEDT	20080214ACT	CP
9A OH STEUBENVILLE	DTVPLN	DTVP0214	PLN
After Analysis			
Results for: 10A WV CLARKSBURG	BMPCDT	20020930AAV	CP
HAAT 235.0 m, ATV ERP 30.0 kW			
	POPULATION	AREA (sq km)	
within Noise Limited Contour	731402	25497.8	
not affected by terrain losses	595303	23053.5	
lost to NTSC IX	0	0.0	
lost to additional IX by ATV	29569	1115.4	
lost to ATV IX only	29569	1115.4	
lost to all IX	29569	1115.4	
Potential Interfering Stations Included in above Scenario	7		

Figure 3

10A OH CINCINNATI	BPCDT	20080306AAP	CP
10A OH SHAKER HEIGHTS	DTVPLN	DTVP0285	PLN
10A PA HARRISBURG	DTVPLN	DTVP0289	PLN
10A WV GRANDVIEW	BMPEDT	20080214ACT	CP
9A OH STEUBENVILLE	USERRECORD01		APP
Percent new IX =	0.3201%		
Result key:	40		
Scenario	8 Affected station	9	
Before Analysis			
Results for: 10A WV CLARKSBURG	BMPCDT	20020930AAV	CP
HAAT 235.0 m, ATV ERP 30.0 kW			
	POPULATION	AREA (sq km)	
within Noise Limited Contour	731402	25497.8	
not affected by terrain losses	595303	23053.5	
lost to NTSC IX	0	0.0	
lost to additional IX by ATV	29189	1159.7	
lost to ATV IX only	29189	1159.7	
lost to all IX	29189	1159.7	
Potential Interfering Stations Included in above Scenario	8		
10A OH CINCINNATI	BPCDT	20080306AAP	CP
10A OH SHAKER HEIGHTS	DTVPLN	DTVP0285	PLN
10A PA HARRISBURG	DTVPLN	DTVP0289	PLN
10A WV GRANDVIEW	DTVPLN	DTVP0301	PLN
9A OH STEUBENVILLE	DTVPLN	DTVP0214	PLN
After Analysis			
Results for: 10A WV CLARKSBURG	BMPCDT	20020930AAV	CP
HAAT 235.0 m, ATV ERP 30.0 kW			
	POPULATION	AREA (sq km)	
within Noise Limited Contour	731402	25497.8	
not affected by terrain losses	595303	23053.5	
lost to NTSC IX	0	0.0	
lost to additional IX by ATV	31006	1191.9	
lost to ATV IX only	31006	1191.9	
lost to all IX	31006	1191.9	
Potential Interfering Stations Included in above Scenario	8		
10A OH CINCINNATI	BPCDT	20080306AAP	CP
10A OH SHAKER HEIGHTS	DTVPLN	DTVP0285	PLN
10A PA HARRISBURG	DTVPLN	DTVP0289	PLN
10A WV GRANDVIEW	DTVPLN	DTVP0301	PLN
9A OH STEUBENVILLE	USERRECORD01		APP
Percent new IX =	0.3210%		
Result key:	41		
Scenario	9 Affected station	9	
Before Analysis			
Results for: 10A WV CLARKSBURG	BMPCDT	20020930AAV	CP
HAAT 235.0 m, ATV ERP 30.0 kW			
	POPULATION	AREA (sq km)	
within Noise Limited Contour	731402	25497.8	
not affected by terrain losses	595303	23053.5	
lost to NTSC IX	0	0.0	
lost to additional IX by ATV	27752	1083.2	
lost to ATV IX only	27752	1083.2	
lost to all IX	27752	1083.2	
Potential Interfering Stations Included in above Scenario	9		
10A OH CINCINNATI	DTVPLN	DTVP0284	PLN
10A OH SHAKER HEIGHTS	BLCDT	19991110AAR	LIC

Figure 3

10A PA HARRISBURG BLCDT 20040812AAH LIC  
10A WV GRANDVIEW BMPEDT 20080214ACT CP  
9A OH STEUBENVILLE DTVPLN DTVP0214 PLN

After Analysis

Results for: 10A WV CLARKSBURG BMPCDT 20020930AAV CP  
HAAT 235.0 m, ATV ERP 30.0 kW

	POPULATION	AREA (sq km)
within Noise Limited Contour	731402	25497.8
not affected by terrain losses	595303	23053.5
lost to NTSC IX	0	0.0
lost to additional IX by ATV	29569	1115.4
lost to ATV IX only	29569	1115.4
lost to all IX	29569	1115.4

Potential Interfering Stations Included in above Scenario 9

10A OH CINCINNATI	DTVPLN	DTVP0284	PLN
10A OH SHAKER HEIGHTS	BLCDT	19991110AAR	LIC
10A PA HARRISBURG	BLCDT	20040812AAH	LIC
10A WV GRANDVIEW	BMPEDT	20080214ACT	CP
9A OH STEUBENVILLE	USERRECORD01		APP

Percent new IX = 0.3201%

Result key: 42  
Scenario 10 Affected station 9  
Before Analysis

Results for: 10A WV CLARKSBURG BMPCDT 20020930AAV CP  
HAAT 235.0 m, ATV ERP 30.0 kW

	POPULATION	AREA (sq km)
within Noise Limited Contour	731402	25497.8
not affected by terrain losses	595303	23053.5
lost to NTSC IX	0	0.0
lost to additional IX by ATV	29189	1159.7
lost to ATV IX only	29189	1159.7
lost to all IX	29189	1159.7

Potential Interfering Stations Included in above Scenario 10

10A OH CINCINNATI	DTVPLN	DTVP0284	PLN
10A OH SHAKER HEIGHTS	BLCDT	19991110AAR	LIC
10A PA HARRISBURG	BLCDT	20040812AAH	LIC
10A WV GRANDVIEW	DTVPLN	DTVP0301	PLN
9A OH STEUBENVILLE	DTVPLN	DTVP0214	PLN

After Analysis

Results for: 10A WV CLARKSBURG BMPCDT 20020930AAV CP  
HAAT 235.0 m, ATV ERP 30.0 kW

	POPULATION	AREA (sq km)
within Noise Limited Contour	731402	25497.8
not affected by terrain losses	595303	23053.5
lost to NTSC IX	0	0.0
lost to additional IX by ATV	31006	1191.9
lost to ATV IX only	31006	1191.9
lost to all IX	31006	1191.9

Potential Interfering Stations Included in above Scenario 10

10A OH CINCINNATI	DTVPLN	DTVP0284	PLN
10A OH SHAKER HEIGHTS	BLCDT	19991110AAR	LIC
10A PA HARRISBURG	BLCDT	20040812AAH	LIC
10A WV GRANDVIEW	DTVPLN	DTVP0301	PLN
9A OH STEUBENVILLE	USERRECORD01		APP

Percent new IX = 0.3210%

Result key: 43

Figure 3

Scenario 11 Affected station 9  
Before Analysis

Results for: 10A WV CLARKSBURG BMPCDT 20020930AAV CP  
HAAT 235.0 m, ATV ERP 30.0 kW

	POPULATION	AREA (sq km)
within Noise Limited Contour	731402	25497.8
not affected by terrain losses	595303	23053.5
lost to NTSC IX	0	0.0
lost to additional IX by ATV	27752	1083.2
lost to ATV IX only	27752	1083.2
lost to all IX	27752	1083.2

Potential Interfering Stations Included in above Scenario 11

10A OH CINCINNATI	DTVPLN	DTVP0284	PLN
10A OH SHAKER HEIGHTS	BLCDT	19991110AAR	LIC
10A PA HARRISBURG	DTVPLN	DTVP0289	PLN
10A WV GRANDVIEW	BMPEDT	20080214ACT	CP
9A OH STEUBENVILLE	DTVPLN	DTVP0214	PLN

After Analysis

Results for: 10A WV CLARKSBURG BMPCDT 20020930AAV CP  
HAAT 235.0 m, ATV ERP 30.0 kW

	POPULATION	AREA (sq km)
within Noise Limited Contour	731402	25497.8
not affected by terrain losses	595303	23053.5
lost to NTSC IX	0	0.0
lost to additional IX by ATV	29569	1115.4
lost to ATV IX only	29569	1115.4
lost to all IX	29569	1115.4

Potential Interfering Stations Included in above Scenario 11

10A OH CINCINNATI	DTVPLN	DTVP0284	PLN
10A OH SHAKER HEIGHTS	BLCDT	19991110AAR	LIC
10A PA HARRISBURG	DTVPLN	DTVP0289	PLN
10A WV GRANDVIEW	BMPEDT	20080214ACT	CP
9A OH STEUBENVILLE	USERRECORD01		APP

Percent new IX = 0.3201%

Result key: 44  
Scenario 12 Affected station 9  
Before Analysis

Results for: 10A WV CLARKSBURG BMPCDT 20020930AAV CP  
HAAT 235.0 m, ATV ERP 30.0 kW

	POPULATION	AREA (sq km)
within Noise Limited Contour	731402	25497.8
not affected by terrain losses	595303	23053.5
lost to NTSC IX	0	0.0
lost to additional IX by ATV	29189	1159.7
lost to ATV IX only	29189	1159.7
lost to all IX	29189	1159.7

Potential Interfering Stations Included in above Scenario 12

10A OH CINCINNATI	DTVPLN	DTVP0284	PLN
10A OH SHAKER HEIGHTS	BLCDT	19991110AAR	LIC
10A PA HARRISBURG	DTVPLN	DTVP0289	PLN
10A WV GRANDVIEW	DTVPLN	DTVP0301	PLN
9A OH STEUBENVILLE	DTVPLN	DTVP0214	PLN

After Analysis

Results for: 10A WV CLARKSBURG BMPCDT 20020930AAV CP  
HAAT 235.0 m, ATV ERP 30.0 kW

	POPULATION	AREA (sq km)
within Noise Limited Contour	731402	25497.8

Figure 3

not affected by terrain losses	595303	23053.5
lost to NTSC IX	0	0.0
lost to additional IX by ATV	31006	1191.9
lost to ATV IX only	31006	1191.9
lost to all IX	31006	1191.9

Potential Interfering Stations Included in above Scenario 12

10A OH CINCINNATI	DTVPLN	DTVP0284	PLN
10A OH SHAKER HEIGHTS	BLCDT	19991110AAR	LIC
10A PA HARRISBURG	DTVPLN	DTVP0289	PLN
10A WV GRANDVIEW	DTVPLN	DTVP0301	PLN
9A OH STEUBENVILLE	USERRECORD01	APP	

Percent new IX = 0.3210%

Result key: 45  
Scenario 13 Affected station 9  
Before Analysis

Results for: 10A WV CLARKSBURG BMPCDT 20020930AAV CP

HAAT 235.0 m, ATV ERP 30.0 kW	POPULATION	AREA (sq km)
within Noise Limited Contour	731402	25497.8
not affected by terrain losses	595303	23053.5
lost to NTSC IX	0	0.0
lost to additional IX by ATV	27752	1083.2
lost to ATV IX only	27752	1083.2
lost to all IX	27752	1083.2

Potential Interfering Stations Included in above Scenario 13

10A OH CINCINNATI	DTVPLN	DTVP0284	PLN
10A OH SHAKER HEIGHTS	DTVPLN	DTVP0285	PLN
10A PA HARRISBURG	BLCDT	20040812AAH	LIC
10A WV GRANDVIEW	BMPEDT	20080214ACT	CP
9A OH STEUBENVILLE	DTVPLN	DTVP0214	PLN

After Analysis

Results for: 10A WV CLARKSBURG BMPCDT 20020930AAV CP

HAAT 235.0 m, ATV ERP 30.0 kW	POPULATION	AREA (sq km)
within Noise Limited Contour	731402	25497.8
not affected by terrain losses	595303	23053.5
lost to NTSC IX	0	0.0
lost to additional IX by ATV	29569	1115.4
lost to ATV IX only	29569	1115.4
lost to all IX	29569	1115.4

Potential Interfering Stations Included in above Scenario 13

10A OH CINCINNATI	DTVPLN	DTVP0284	PLN
10A OH SHAKER HEIGHTS	DTVPLN	DTVP0285	PLN
10A PA HARRISBURG	BLCDT	20040812AAH	LIC
10A WV GRANDVIEW	BMPEDT	20080214ACT	CP
9A OH STEUBENVILLE	USERRECORD01	APP	

Percent new IX = 0.3201%

Result key: 46  
Scenario 14 Affected station 9  
Before Analysis

Results for: 10A WV CLARKSBURG BMPCDT 20020930AAV CP

HAAT 235.0 m, ATV ERP 30.0 kW	POPULATION	AREA (sq km)
within Noise Limited Contour	731402	25497.8
not affected by terrain losses	595303	23053.5
lost to NTSC IX	0	0.0
lost to additional IX by ATV	29189	1159.7

Figure 3

lost to ATV IX only	29189	1159.7
lost to all IX	29189	1159.7

Potential Interfering Stations Included in above Scenario 14

10A OH CINCINNATI	DTVPLN	DTVP0284	PLN
10A OH SHAKER HEIGHTS	DTVPLN	DTVP0285	PLN
10A PA HARRISBURG	BLCDT	20040812AAH	LIC
10A WV GRANDVIEW	DTVPLN	DTVP0301	PLN
9A OH STEUBENVILLE	DTVPLN	DTVP0214	PLN

After Analysis

Results for: 10A WV CLARKSBURG BMPCDT 20020930AAV CP

HAAT 235.0 m, ATV ERP 30.0 kW	POPULATION	AREA (sq km)
within Noise Limited Contour	731402	25497.8
not affected by terrain losses	595303	23053.5
lost to NTSC IX	0	0.0
lost to additional IX by ATV	31006	1191.9
lost to ATV IX only	31006	1191.9
lost to all IX	31006	1191.9

Potential Interfering Stations Included in above Scenario 14

10A OH CINCINNATI	DTVPLN	DTVP0284	PLN
10A OH SHAKER HEIGHTS	DTVPLN	DTVP0285	PLN
10A PA HARRISBURG	BLCDT	20040812AAH	LIC
10A WV GRANDVIEW	DTVPLN	DTVP0301	PLN
9A OH STEUBENVILLE	USERRECORD01	APP	

Percent new IX = 0.3210%

Result key: 47  
Scenario 15 Affected station 9  
Before Analysis

Results for: 10A WV CLARKSBURG BMPCDT 20020930AAV CP

HAAT 235.0 m, ATV ERP 30.0 kW	POPULATION	AREA (sq km)
within Noise Limited Contour	731402	25497.8
not affected by terrain losses	595303	23053.5
lost to NTSC IX	0	0.0
lost to additional IX by ATV	27752	1083.2
lost to ATV IX only	27752	1083.2
lost to all IX	27752	1083.2

Potential Interfering Stations Included in above Scenario 15

10A OH CINCINNATI	DTVPLN	DTVP0284	PLN
10A OH SHAKER HEIGHTS	DTVPLN	DTVP0285	PLN
10A PA HARRISBURG	DTVPLN	DTVP0289	PLN
10A WV GRANDVIEW	BMPEDT	20080214ACT	CP
9A OH STEUBENVILLE	DTVPLN	DTVP0214	PLN

After Analysis

Results for: 10A WV CLARKSBURG BMPCDT 20020930AAV CP

HAAT 235.0 m, ATV ERP 30.0 kW	POPULATION	AREA (sq km)
within Noise Limited Contour	731402	25497.8
not affected by terrain losses	595303	23053.5
lost to NTSC IX	0	0.0
lost to additional IX by ATV	29569	1115.4
lost to ATV IX only	29569	1115.4
lost to all IX	29569	1115.4

Potential Interfering Stations Included in above Scenario 15

10A OH CINCINNATI	DTVPLN	DTVP0284	PLN
10A OH SHAKER HEIGHTS	DTVPLN	DTVP0285	PLN



Figure 3

10A PA HARRISBURG DTVPLN DTVP0289 PLN  
 10A WV GRANDVIEW BMPEDT 20080214ACT CP  
 9A OH STEUBENVILLE USERRECORD01 APP

Percent new IX = 0.3201%

Result key: 48  
 Scenario 16 Affected station 9  
 Before Analysis

Results for: 10A WV CLARKSBURG BMPCDT 20020930AAV CP  
 HAAT 235.0 m, ATV ERP 30.0 kW

	POPULATION	AREA (sq km)
within Noise Limited Contour	731402	25497.8
not affected by terrain losses	595303	23053.5
lost to NTSC IX	0	0.0
lost to additional IX by ATV	29189	1159.7
lost to ATV IX only	29189	1159.7
lost to all IX	29189	1159.7

Potential Interfering Stations Included in above Scenario 16

10A OH CINCINNATI DTVPLN DTVP0284 PLN  
 10A OH SHAKER HEIGHTS DTVPLN DTVP0285 PLN  
 10A PA HARRISBURG DTVPLN DTVP0289 PLN  
 10A WV GRANDVIEW DTVPLN DTVP0301 PLN  
 9A OH STEUBENVILLE DTVPLN DTVP0214 PLN

After Analysis

Results for: 10A WV CLARKSBURG BMPCDT 20020930AAV CP  
 HAAT 235.0 m, ATV ERP 30.0 kW

	POPULATION	AREA (sq km)
within Noise Limited Contour	731402	25497.8
not affected by terrain losses	595303	23053.5
lost to NTSC IX	0	0.0
lost to additional IX by ATV	31006	1191.9
lost to ATV IX only	31006	1191.9
lost to all IX	31006	1191.9

Potential Interfering Stations Included in above Scenario 16

10A OH CINCINNATI DTVPLN DTVP0284 PLN  
 10A OH SHAKER HEIGHTS DTVPLN DTVP0285 PLN  
 10A PA HARRISBURG DTVPLN DTVP0289 PLN  
 10A WV GRANDVIEW DTVPLN DTVP0301 PLN  
 9A OH STEUBENVILLE USERRECORD01 APP

Percent new IX = 0.3210%

Result key: 49  
 Scenario 17 Affected station 9  
 Before Analysis

Results for: 10A WV CLARKSBURG BMPCDT 20020930AAV CP  
 HAAT 235.0 m, ATV ERP 30.0 kW

	POPULATION	AREA (sq km)
within Noise Limited Contour	731402	25497.8
not affected by terrain losses	595303	23053.5
lost to NTSC IX	0	0.0
lost to additional IX by ATV	27752	1083.2
lost to ATV IX only	27752	1083.2
lost to all IX	27752	1083.2

Potential Interfering Stations Included in above Scenario 17

10A OH CINCINNATI BLCDDT 20041230ACA LIC  
 10A OH SHAKER HEIGHTS BLCDDT 19991110AAR LIC  
 10A PA HARRISBURG BLCDDT 20040812AAH LIC  
 10A WV GRANDVIEW BMPEDT 20080214ACT CP  
 9A OH STEUBENVILLE DTVPLN DTVP0214 PLN

Figure 3

After Analysis

Results for: 10A WV CLARKSBURG BMPCDT 20020930AAV CP  
 HAAT 235.0 m, ATV ERP 30.0 kW

	POPULATION	AREA (sq km)
within Noise Limited Contour	731402	25497.8
not affected by terrain losses	595303	23053.5
lost to NTSC IX	0	0.0
lost to additional IX by ATV	29569	1115.4
lost to ATV IX only	29569	1115.4
lost to all IX	29569	1115.4

Potential Interfering Stations Included in above Scenario 17

10A OH CINCINNATI BLCDDT 20041230ACA LIC  
 10A OH SHAKER HEIGHTS BLCDDT 19991110AAR LIC  
 10A PA HARRISBURG BLCDDT 20040812AAH LIC  
 10A WV GRANDVIEW BMPEDT 20080214ACT CP  
 9A OH STEUBENVILLE USERRECORD01 APP

Percent new IX = 0.3201%

Result key: 50  
 Scenario 18 Affected station 9  
 Before Analysis

Results for: 10A WV CLARKSBURG BMPCDT 20020930AAV CP  
 HAAT 235.0 m, ATV ERP 30.0 kW

	POPULATION	AREA (sq km)
within Noise Limited Contour	731402	25497.8
not affected by terrain losses	595303	23053.5
lost to NTSC IX	0	0.0
lost to additional IX by ATV	29189	1159.7
lost to ATV IX only	29189	1159.7
lost to all IX	29189	1159.7

Potential Interfering Stations Included in above Scenario 18

10A OH CINCINNATI BLCDDT 20041230ACA LIC  
 10A OH SHAKER HEIGHTS BLCDDT 19991110AAR LIC  
 10A PA HARRISBURG BLCDDT 20040812AAH LIC  
 10A WV GRANDVIEW DTVPLN DTVP0301 PLN  
 9A OH STEUBENVILLE DTVPLN DTVP0214 PLN

After Analysis

Results for: 10A WV CLARKSBURG BMPCDT 20020930AAV CP  
 HAAT 235.0 m, ATV ERP 30.0 kW

	POPULATION	AREA (sq km)
within Noise Limited Contour	731402	25497.8
not affected by terrain losses	595303	23053.5
lost to NTSC IX	0	0.0
lost to additional IX by ATV	31006	1191.9
lost to ATV IX only	31006	1191.9
lost to all IX	31006	1191.9

Potential Interfering Stations Included in above Scenario 18

10A OH CINCINNATI BLCDDT 20041230ACA LIC  
 10A OH SHAKER HEIGHTS BLCDDT 19991110AAR LIC  
 10A PA HARRISBURG BLCDDT 20040812AAH LIC  
 10A WV GRANDVIEW DTVPLN DTVP0301 PLN  
 9A OH STEUBENVILLE USERRECORD01 APP

Percent new IX = 0.3210%

Result key: 51  
 Scenario 19 Affected station 9  
 Before Analysis

Figure 3

Results for: 10A WV CLARKSBURG      BMPCDT      20020930AAV   CP  
 HAAT 235.0 m, ATV ERP 30.0 kW

	POPULATION	AREA (sq km)
within Noise Limited Contour	731402	25497.8
not affected by terrain losses	595303	23053.5
lost to NTSC IX	0	0.0
lost to additional IX by ATV	27752	1083.2
lost to ATV IX only	27752	1083.2
lost to all IX	27752	1083.2

Potential Interfering Stations Included in above Scenario 19

10A OH CINCINNATI	BLCDDT	20041230ACA	LIC
10A OH SHAKER HEIGHTS	BLCDDT	19991110AAR	LIC
10A PA HARRISBURG	DTVPLN	DTVP0289	PLN
10A WV GRANDVIEW	BMPEDT	20080214ACT	CP
9A OH STEUBENVILLE	DTVPLN	DTVP0214	PLN

After Analysis

Results for: 10A WV CLARKSBURG      BMPCDT      20020930AAV   CP  
 HAAT 235.0 m, ATV ERP 30.0 kW

	POPULATION	AREA (sq km)
within Noise Limited Contour	731402	25497.8
not affected by terrain losses	595303	23053.5
lost to NTSC IX	0	0.0
lost to additional IX by ATV	29569	1115.4
lost to ATV IX only	29569	1115.4
lost to all IX	29569	1115.4

Potential Interfering Stations Included in above Scenario 19

10A OH CINCINNATI	BLCDDT	20041230ACA	LIC
10A OH SHAKER HEIGHTS	BLCDDT	19991110AAR	LIC
10A PA HARRISBURG	DTVPLN	DTVP0289	PLN
10A WV GRANDVIEW	BMPEDT	20080214ACT	CP
9A OH STEUBENVILLE	USERRECORD01		APP

Percent new IX = 0.3201%

Result key: 52  
 Scenario 20 Affected station 9  
 Before Analysis

Results for: 10A WV CLARKSBURG      BMPCDT      20020930AAV   CP  
 HAAT 235.0 m, ATV ERP 30.0 kW

	POPULATION	AREA (sq km)
within Noise Limited Contour	731402	25497.8
not affected by terrain losses	595303	23053.5
lost to NTSC IX	0	0.0
lost to additional IX by ATV	29189	1159.7
lost to ATV IX only	29189	1159.7
lost to all IX	29189	1159.7

Potential Interfering Stations Included in above Scenario 20

10A OH CINCINNATI	BLCDDT	20041230ACA	LIC
10A OH SHAKER HEIGHTS	BLCDDT	19991110AAR	LIC
10A PA HARRISBURG	DTVPLN	DTVP0289	PLN
10A WV GRANDVIEW	DTVPLN	DTVP0301	PLN
9A OH STEUBENVILLE	DTVPLN	DTVP0214	PLN

After Analysis

Results for: 10A WV CLARKSBURG      BMPCDT      20020930AAV   CP  
 HAAT 235.0 m, ATV ERP 30.0 kW

	POPULATION	AREA (sq km)
within Noise Limited Contour	731402	25497.8
not affected by terrain losses	595303	23053.5
lost to NTSC IX	0	0.0
lost to additional IX by ATV	31006	1191.9

Figure 3

lost to ATV IX only 31006 1191.9  
 lost to all IX 31006 1191.9

Potential Interfering Stations Included in above Scenario 20

10A OH CINCINNATI	BLCDDT	20041230ACA	LIC
10A OH SHAKER HEIGHTS	BLCDDT	19991110AAR	LIC
10A PA HARRISBURG	DTVPLN	DTVP0289	PLN
10A WV GRANDVIEW	DTVPLN	DTVP0301	PLN
9A OH STEUBENVILLE	USERRECORD01		APP

Percent new IX = 0.3210%

Result key: 53  
 Scenario 21 Affected station 9  
 Before Analysis

Results for: 10A WV CLARKSBURG      BMPCDT      20020930AAV   CP  
 HAAT 235.0 m, ATV ERP 30.0 kW

	POPULATION	AREA (sq km)
within Noise Limited Contour	731402	25497.8
not affected by terrain losses	595303	23053.5
lost to NTSC IX	0	0.0
lost to additional IX by ATV	27752	1083.2
lost to ATV IX only	27752	1083.2
lost to all IX	27752	1083.2

Potential Interfering Stations Included in above Scenario 21

10A OH CINCINNATI	BLCDDT	20041230ACA	LIC
10A OH SHAKER HEIGHTS	DTVPLN	DTVP0285	PLN
10A PA HARRISBURG	BLCDDT	20040812AAH	LIC
10A WV GRANDVIEW	BMPEDT	20080214ACT	CP
9A OH STEUBENVILLE	DTVPLN	DTVP0214	PLN

After Analysis

Results for: 10A WV CLARKSBURG      BMPCDT      20020930AAV   CP  
 HAAT 235.0 m, ATV ERP 30.0 kW

	POPULATION	AREA (sq km)
within Noise Limited Contour	731402	25497.8
not affected by terrain losses	595303	23053.5
lost to NTSC IX	0	0.0
lost to additional IX by ATV	29569	1115.4
lost to ATV IX only	29569	1115.4
lost to all IX	29569	1115.4

Potential Interfering Stations Included in above Scenario 21

10A OH CINCINNATI	BLCDDT	20041230ACA	LIC
10A OH SHAKER HEIGHTS	DTVPLN	DTVP0285	PLN
10A PA HARRISBURG	BLCDDT	20040812AAH	LIC
10A WV GRANDVIEW	BMPEDT	20080214ACT	CP
9A OH STEUBENVILLE	USERRECORD01		APP

Percent new IX = 0.3201%

Result key: 54  
 Scenario 22 Affected station 9  
 Before Analysis

Results for: 10A WV CLARKSBURG      BMPCDT      20020930AAV   CP  
 HAAT 235.0 m, ATV ERP 30.0 kW

	POPULATION	AREA (sq km)
within Noise Limited Contour	731402	25497.8
not affected by terrain losses	595303	23053.5
lost to NTSC IX	0	0.0
lost to additional IX by ATV	29189	1159.7
lost to ATV IX only	29189	1159.7
lost to all IX	29189	1159.7

Figure 3

Potential Interfering Stations Included in above Scenario 22

10A OH CINCINNATI	BLCDDT	20041230ACA	LIC
10A OH SHAKER HEIGHTS	DTVPLN	DTVP0285	PLN
10A PA HARRISBURG	BLCDDT	20040812AAH	LIC
10A WV GRANDVIEW	DTVPLN	DTVP0301	PLN
9A OH STEUBENVILLE	DTVPLN	DTVP0214	PLN

After Analysis

Results for: 10A WV CLARKSBURG BMPCDT 20020930AAV CP

HAAT 235.0 m, ATV ERP 30.0 kW	POPULATION	AREA (sq km)
within Noise Limited Contour	731402	25497.8
not affected by terrain losses	595303	23053.5
lost to NTSC IX	0	0.0
lost to additional IX by ATV	31006	1191.9
lost to ATV IX only	31006	1191.9
lost to all IX	31006	1191.9

Potential Interfering Stations Included in above Scenario 22

10A OH CINCINNATI	BLCDDT	20041230ACA	LIC
10A OH SHAKER HEIGHTS	DTVPLN	DTVP0285	PLN
10A PA HARRISBURG	BLCDDT	20040812AAH	LIC
10A WV GRANDVIEW	DTVPLN	DTVP0301	PLN
9A OH STEUBENVILLE	USERRECORD01		APP

Percent new IX = 0.3210%

Result key: 55  
Scenario 23 Affected station 9  
Before Analysis

Results for: 10A WV CLARKSBURG BMPCDT 20020930AAV CP

HAAT 235.0 m, ATV ERP 30.0 kW	POPULATION	AREA (sq km)
within Noise Limited Contour	731402	25497.8
not affected by terrain losses	595303	23053.5
lost to NTSC IX	0	0.0
lost to additional IX by ATV	27752	1083.2
lost to ATV IX only	27752	1083.2
lost to all IX	27752	1083.2

Potential Interfering Stations Included in above Scenario 23

10A OH CINCINNATI	BLCDDT	20041230ACA	LIC
10A OH SHAKER HEIGHTS	DTVPLN	DTVP0285	PLN
10A PA HARRISBURG	DTVPLN	DTVP0289	PLN
10A WV GRANDVIEW	BMPEDT	20080214ACT	CP
9A OH STEUBENVILLE	DTVPLN	DTVP0214	PLN

After Analysis

Results for: 10A WV CLARKSBURG BMPCDT 20020930AAV CP

HAAT 235.0 m, ATV ERP 30.0 kW	POPULATION	AREA (sq km)
within Noise Limited Contour	731402	25497.8
not affected by terrain losses	595303	23053.5
lost to NTSC IX	0	0.0
lost to additional IX by ATV	29569	1115.4
lost to ATV IX only	29569	1115.4
lost to all IX	29569	1115.4

Potential Interfering Stations Included in above Scenario 23

10A OH CINCINNATI	BLCDDT	20041230ACA	LIC
10A OH SHAKER HEIGHTS	DTVPLN	DTVP0285	PLN
10A PA HARRISBURG	DTVPLN	DTVP0289	PLN
10A WV GRANDVIEW	BMPEDT	20080214ACT	CP
9A OH STEUBENVILLE	USERRECORD01		APP

Figure 3

Percent new IX = 0.3201%

Result key: 56  
Scenario 24 Affected station 9  
Before Analysis

Results for: 10A WV CLARKSBURG BMPCDT 20020930AAV CP

HAAT 235.0 m, ATV ERP 30.0 kW	POPULATION	AREA (sq km)
within Noise Limited Contour	731402	25497.8
not affected by terrain losses	595303	23053.5
lost to NTSC IX	0	0.0
lost to additional IX by ATV	29189	1159.7
lost to ATV IX only	29189	1159.7
lost to all IX	29189	1159.7

Potential Interfering Stations Included in above Scenario 24

10A OH CINCINNATI	BLCDDT	20041230ACA	LIC
10A OH SHAKER HEIGHTS	DTVPLN	DTVP0285	PLN
10A PA HARRISBURG	DTVPLN	DTVP0289	PLN
10A WV GRANDVIEW	DTVPLN	DTVP0301	PLN
9A OH STEUBENVILLE	DTVPLN	DTVP0214	PLN

After Analysis

Results for: 10A WV CLARKSBURG BMPCDT 20020930AAV CP

HAAT 235.0 m, ATV ERP 30.0 kW	POPULATION	AREA (sq km)
within Noise Limited Contour	731402	25497.8
not affected by terrain losses	595303	23053.5
lost to NTSC IX	0	0.0
lost to additional IX by ATV	31006	1191.9
lost to ATV IX only	31006	1191.9
lost to all IX	31006	1191.9

Potential Interfering Stations Included in above Scenario 24

10A OH CINCINNATI	BLCDDT	20041230ACA	LIC
10A OH SHAKER HEIGHTS	DTVPLN	DTVP0285	PLN
10A PA HARRISBURG	DTVPLN	DTVP0289	PLN
10A WV GRANDVIEW	DTVPLN	DTVP0301	PLN
9A OH STEUBENVILLE	USERRECORD01		APP

Percent new IX = 0.3210%

Worst case new IX 0.3210% Scenario 2

#####

Analysis of Interference to Affected Station 10

Analysis of current record

Channel	Call	City/State	Application Ref. No.
10	WVFX	CLARKSBURG WV	DTVPLN -DTVP0300

Stations Potentially Affecting This Station

Chan	Call	City/State	Dist(km)	Status	Application Ref. No.
09	WTOV-TV	STEUBENVILLE OH	118.2	PLN	DTVPLN -DTVP0214
10	WCPO-TV	CINCINNATI OH	358.3	CP	BPCDDT -20080306AAP
10	WCPO-TV	CINCINNATI OH	358.4	PLN	DTVPLN -DTVP0284
10	WCPO-TV	CINCINNATI OH	358.3	LIC	BLCDDT -20041230ACA
10	WOIO	SHAKER HEIGHTS OH	258.7	LIC	BLCDDT -19991110AAR
10	WOIO	SHAKER HEIGHTS OH	258.7	PLN	DTVPLN -DTVP0285
10	WHTM-TV	HARRISBURG PA	310.9	LIC	BLCDDT -20040812AAH
10	WHTM-TV	HARRISBURG PA	310.9	PLN	DTVPLN -DTVP0289
10	WSPW-TV	GRANDVIEW WV	165.9	CP MOD	BMPEDT -20080214ACT

Figure 3

10	WSWP-TV	GRANDVIEW WV	165.9	PLN	DTVPLN	-DTVP0301
11	WPCW	JEANNETTE PA	135.5	CP	BPCDT	-20080523ADD
11	WPCW	JEANNETTE PA	140.6	PLN	DTVPLN	-DTVP0342
11	WVPT	STAUNTON VA	154.6	LIC	BLEDT	-20021220ADX
11	WVPT	STAUNTON VA	154.6	PLN	DTVPLN	-DTVP0354
09	WTOV-TV	STEBENVILLE OH	118.2	APP	USERRECORD-01	

Total scenarios = 24

Result key: 57  
 Scenario 1 Affected station 10  
 Before Analysis

Results for: 10A WV CLARKSBURG		DTVPLN	DTVP0300	PLN
HAAT	235.0 m, ATV ERP 30.0 kW			
	POPULATION	AREA (sq km)		
within Noise Limited Contour	731402	25497.8		
not affected by terrain losses	595303	23053.5		
lost to NTSC IX	0	0.0		
lost to additional IX by ATV	27752	1083.2		
lost to ATV IX only	27752	1083.2		
lost to all IX	27752	1083.2		

Potential Interfering Stations Included in above Scenario 1

10A OH CINCINNATI	BPCDT	20080306AAP	CP
10A OH SHAKER HEIGHTS	BLCDT	19991110AAR	LIC
10A PA HARRISBURG	BLCDT	20040812AAH	LIC
10A WV GRANDVIEW	BMPEDT	20080214ACT	CP
9A OH STEUBENVILLE	DTVPLN	DTVP0214	PLN

After Analysis

Results for: 10A WV CLARKSBURG		DTVPLN	DTVP0300	PLN
HAAT	235.0 m, ATV ERP 30.0 kW			
	POPULATION	AREA (sq km)		
within Noise Limited Contour	731402	25497.8		
not affected by terrain losses	595303	23053.5		
lost to NTSC IX	0	0.0		
lost to additional IX by ATV	29569	1115.4		
lost to ATV IX only	29569	1115.4		
lost to all IX	29569	1115.4		

Potential Interfering Stations Included in above Scenario 1

10A OH CINCINNATI	BPCDT	20080306AAP	CP
10A OH SHAKER HEIGHTS	BLCDT	19991110AAR	LIC
10A PA HARRISBURG	BLCDT	20040812AAH	LIC
10A WV GRANDVIEW	BMPEDT	20080214ACT	CP
9A OH STEUBENVILLE	USERRECORD01		APP

Percent new IX = 0.3201%

Result key: 58  
 Scenario 2 Affected station 10  
 Before Analysis

Results for: 10A WV CLARKSBURG		DTVPLN	DTVP0300	PLN
HAAT	235.0 m, ATV ERP 30.0 kW			
	POPULATION	AREA (sq km)		
within Noise Limited Contour	731402	25497.8		
not affected by terrain losses	595303	23053.5		
lost to NTSC IX	0	0.0		
lost to additional IX by ATV	29189	1159.7		
lost to ATV IX only	29189	1159.7		
lost to all IX	29189	1159.7		

Potential Interfering Stations Included in above Scenario 2

10A OH CINCINNATI	BPCDT	20080306AAP	CP
-------------------	-------	-------------	----

Figure 3

10A OH SHAKER HEIGHTS	BLCDT	19991110AAR	LIC
10A PA HARRISBURG	BLCDT	20040812AAH	LIC
10A WV GRANDVIEW	DTVPLN	DTVP0301	PLN
9A OH STEUBENVILLE	DTVPLN	DTVP0214	PLN

After Analysis

Results for: 10A WV CLARKSBURG		DTVPLN	DTVP0300	PLN
HAAT	235.0 m, ATV ERP 30.0 kW			
	POPULATION	AREA (sq km)		
within Noise Limited Contour	731402	25497.8		
not affected by terrain losses	595303	23053.5		
lost to NTSC IX	0	0.0		
lost to additional IX by ATV	31006	1191.9		
lost to ATV IX only	31006	1191.9		
lost to all IX	31006	1191.9		

Potential Interfering Stations Included in above Scenario 2

10A OH CINCINNATI	BPCDT	20080306AAP	CP
10A OH SHAKER HEIGHTS	BLCDT	19991110AAR	LIC
10A PA HARRISBURG	BLCDT	20040812AAH	LIC
10A WV GRANDVIEW	DTVPLN	DTVP0301	PLN
9A OH STEUBENVILLE	USERRECORD01		APP

Percent new IX = 0.3210%

Result key: 59  
 Scenario 3 Affected station 10  
 Before Analysis

Results for: 10A WV CLARKSBURG		DTVPLN	DTVP0300	PLN
HAAT	235.0 m, ATV ERP 30.0 kW			
	POPULATION	AREA (sq km)		
within Noise Limited Contour	731402	25497.8		
not affected by terrain losses	595303	23053.5		
lost to NTSC IX	0	0.0		
lost to additional IX by ATV	27752	1083.2		
lost to ATV IX only	27752	1083.2		
lost to all IX	27752	1083.2		

Potential Interfering Stations Included in above Scenario 3

10A OH CINCINNATI	BPCDT	20080306AAP	CP
10A OH SHAKER HEIGHTS	BLCDT	19991110AAR	LIC
10A PA HARRISBURG	DTVPLN	DTVP0289	PLN
10A WV GRANDVIEW	BMPEDT	20080214ACT	CP
9A OH STEUBENVILLE	DTVPLN	DTVP0214	PLN

After Analysis

Results for: 10A WV CLARKSBURG		DTVPLN	DTVP0300	PLN
HAAT	235.0 m, ATV ERP 30.0 kW			
	POPULATION	AREA (sq km)		
within Noise Limited Contour	731402	25497.8		
not affected by terrain losses	595303	23053.5		
lost to NTSC IX	0	0.0		
lost to additional IX by ATV	29569	1115.4		
lost to ATV IX only	29569	1115.4		
lost to all IX	29569	1115.4		

Potential Interfering Stations Included in above Scenario 3

10A OH CINCINNATI	BPCDT	20080306AAP	CP
10A OH SHAKER HEIGHTS	BLCDT	19991110AAR	LIC
10A PA HARRISBURG	DTVPLN	DTVP0289	PLN
10A WV GRANDVIEW	BMPEDT	20080214ACT	CP
9A OH STEUBENVILLE	USERRECORD01		APP

Percent new IX = 0.3201%

Figure 3

Result key:	60			
Scenario	4	Affected station	10	
Before Analysis				
Results for: 10A WV CLARKSBURG	DTVPLN	DTVP0300	PLN	
HAAT 235.0 m, ATV ERP 30.0 kW				
	POPULATION	AREA (sq km)		
within Noise Limited Contour	731402	25497.8		
not affected by terrain losses	595303	23053.5		
lost to NTSC IX	0	0.0		
lost to additional IX by ATV	29189	1159.7		
lost to ATV IX only	29189	1159.7		
lost to all IX	29189	1159.7		
Potential Interfering Stations Included in above Scenario	4			
10A OH CINCINNATI	BPCDT	20080306AAP	CP	
10A OH SHAKER HEIGHTS	BLCDT	19991110AAR	LIC	
10A PA HARRISBURG	DTVPLN	DTVP0289	PLN	
10A WV GRANDVIEW	DTVPLN	DTVP0301	PLN	
9A OH STEUBENVILLE	DTVPLN	DTVP0214	PLN	
After Analysis				
Results for: 10A WV CLARKSBURG	DTVPLN	DTVP0300	PLN	
HAAT 235.0 m, ATV ERP 30.0 kW				
	POPULATION	AREA (sq km)		
within Noise Limited Contour	731402	25497.8		
not affected by terrain losses	595303	23053.5		
lost to NTSC IX	0	0.0		
lost to additional IX by ATV	31006	1191.9		
lost to ATV IX only	31006	1191.9		
lost to all IX	31006	1191.9		
Potential Interfering Stations Included in above Scenario	4			
10A OH CINCINNATI	BPCDT	20080306AAP	CP	
10A OH SHAKER HEIGHTS	BLCDT	19991110AAR	LIC	
10A PA HARRISBURG	DTVPLN	DTVP0289	PLN	
10A WV GRANDVIEW	DTVPLN	DTVP0301	PLN	
9A OH STEUBENVILLE	USERRECORD01	APP		
Percent new IX =	0.3210%			
Result key:	61			
Scenario	5	Affected station	10	
Before Analysis				
Results for: 10A WV CLARKSBURG	DTVPLN	DTVP0300	PLN	
HAAT 235.0 m, ATV ERP 30.0 kW				
	POPULATION	AREA (sq km)		
within Noise Limited Contour	731402	25497.8		
not affected by terrain losses	595303	23053.5		
lost to NTSC IX	0	0.0		
lost to additional IX by ATV	27752	1083.2		
lost to ATV IX only	27752	1083.2		
lost to all IX	27752	1083.2		
Potential Interfering Stations Included in above Scenario	5			
10A OH CINCINNATI	BPCDT	20080306AAP	CP	
10A OH SHAKER HEIGHTS	DTVPLN	DTVP0285	PLN	
10A PA HARRISBURG	BLCDT	20040812AAH	LIC	
10A WV GRANDVIEW	BMPEDT	20080214ACT	CP	
9A OH STEUBENVILLE	DTVPLN	DTVP0214	PLN	
After Analysis				
Results for: 10A WV CLARKSBURG	DTVPLN	DTVP0300	PLN	
HAAT 235.0 m, ATV ERP 30.0 kW				
	POPULATION	AREA (sq km)		
within Noise Limited Contour	731402	25497.8		
not affected by terrain losses	595303	23053.5		
lost to NTSC IX	0	0.0		

Figure 3

within Noise Limited Contour	731402	25497.8		
not affected by terrain losses	595303	23053.5		
lost to NTSC IX	0	0.0		
lost to additional IX by ATV	29569	1115.4		
lost to ATV IX only	29569	1115.4		
lost to all IX	29569	1115.4		
Potential Interfering Stations Included in above Scenario	5			
10A OH CINCINNATI	BPCDT	20080306AAP	CP	
10A OH SHAKER HEIGHTS	DTVPLN	DTVP0285	PLN	
10A PA HARRISBURG	BLCDT	20040812AAH	LIC	
10A WV GRANDVIEW	BMPEDT	20080214ACT	CP	
9A OH STEUBENVILLE	USERRECORD01	APP		
Percent new IX =	0.3201%			
Result key:	62			
Scenario	6	Affected station	10	
Before Analysis				
Results for: 10A WV CLARKSBURG	DTVPLN	DTVP0300	PLN	
HAAT 235.0 m, ATV ERP 30.0 kW				
	POPULATION	AREA (sq km)		
within Noise Limited Contour	731402	25497.8		
not affected by terrain losses	595303	23053.5		
lost to NTSC IX	0	0.0		
lost to additional IX by ATV	29189	1159.7		
lost to ATV IX only	29189	1159.7		
lost to all IX	29189	1159.7		
Potential Interfering Stations Included in above Scenario	6			
10A OH CINCINNATI	BPCDT	20080306AAP	CP	
10A OH SHAKER HEIGHTS	DTVPLN	DTVP0285	PLN	
10A PA HARRISBURG	BLCDT	20040812AAH	LIC	
10A WV GRANDVIEW	DTVPLN	DTVP0301	PLN	
9A OH STEUBENVILLE	DTVPLN	DTVP0214	PLN	
After Analysis				
Results for: 10A WV CLARKSBURG	DTVPLN	DTVP0300	PLN	
HAAT 235.0 m, ATV ERP 30.0 kW				
	POPULATION	AREA (sq km)		
within Noise Limited Contour	731402	25497.8		
not affected by terrain losses	595303	23053.5		
lost to NTSC IX	0	0.0		
lost to additional IX by ATV	31006	1191.9		
lost to ATV IX only	31006	1191.9		
lost to all IX	31006	1191.9		
Potential Interfering Stations Included in above Scenario	6			
10A OH CINCINNATI	BPCDT	20080306AAP	CP	
10A OH SHAKER HEIGHTS	DTVPLN	DTVP0285	PLN	
10A PA HARRISBURG	BLCDT	20040812AAH	LIC	
10A WV GRANDVIEW	DTVPLN	DTVP0301	PLN	
9A OH STEUBENVILLE	USERRECORD01	APP		
Percent new IX =	0.3210%			
Result key:	63			
Scenario	7	Affected station	10	
Before Analysis				
Results for: 10A WV CLARKSBURG	DTVPLN	DTVP0300	PLN	
HAAT 235.0 m, ATV ERP 30.0 kW				
	POPULATION	AREA (sq km)		
within Noise Limited Contour	731402	25497.8		
not affected by terrain losses	595303	23053.5		
lost to NTSC IX	0	0.0		

Figure 3

lost to additional IX by ATV	27752	1083.2	
lost to ATV IX only	27752	1083.2	
lost to all IX	27752	1083.2	
Potential Interfering Stations Included in above Scenario 7			
10A OH CINCINNATI	BPCDT	20080306AAP	CP
10A OH SHAKER HEIGHTS	DTVPLN	DTVP0285	PLN
10A PA HARRISBURG	DTVPLN	DTVP0289	PLN
10A WV GRANDVIEW	BMPEDT	20080214ACT	CP
9A OH STEUBENVILLE	DTVPLN	DTVP0214	PLN
After Analysis			
Results for: 10A WV CLARKSBURG	DTVPLN	DTVP0300	PLN
HAAT 235.0 m, ATV ERP 30.0 kW			
	POPULATION	AREA (sq km)	
within Noise Limited Contour	731402	25497.8	
not affected by terrain losses	595303	23053.5	
lost to NTSC IX	0	0.0	
lost to additional IX by ATV	29569	1115.4	
lost to ATV IX only	29569	1115.4	
lost to all IX	29569	1115.4	
Potential Interfering Stations Included in above Scenario 7			
10A OH CINCINNATI	BPCDT	20080306AAP	CP
10A OH SHAKER HEIGHTS	DTVPLN	DTVP0285	PLN
10A PA HARRISBURG	DTVPLN	DTVP0289	PLN
10A WV GRANDVIEW	BMPEDT	20080214ACT	CP
9A OH STEUBENVILLE	USERRECORD01		APP
Percent new IX = 0.3201%			
Result key:	64		
Scenario	8	Affected station	10
Before Analysis			
Results for: 10A WV CLARKSBURG	DTVPLN	DTVP0300	PLN
HAAT 235.0 m, ATV ERP 30.0 kW			
	POPULATION	AREA (sq km)	
within Noise Limited Contour	731402	25497.8	
not affected by terrain losses	595303	23053.5	
lost to NTSC IX	0	0.0	
lost to additional IX by ATV	29189	1159.7	
lost to ATV IX only	29189	1159.7	
lost to all IX	29189	1159.7	
Potential Interfering Stations Included in above Scenario 8			
10A OH CINCINNATI	BPCDT	20080306AAP	CP
10A OH SHAKER HEIGHTS	DTVPLN	DTVP0285	PLN
10A PA HARRISBURG	DTVPLN	DTVP0289	PLN
10A WV GRANDVIEW	DTVPLN	DTVP0301	PLN
9A OH STEUBENVILLE	DTVPLN	DTVP0214	PLN
After Analysis			
Results for: 10A WV CLARKSBURG	DTVPLN	DTVP0300	PLN
HAAT 235.0 m, ATV ERP 30.0 kW			
	POPULATION	AREA (sq km)	
within Noise Limited Contour	731402	25497.8	
not affected by terrain losses	595303	23053.5	
lost to NTSC IX	0	0.0	
lost to additional IX by ATV	31006	1191.9	
lost to ATV IX only	31006	1191.9	
lost to all IX	31006	1191.9	
Potential Interfering Stations Included in above Scenario 8			
10A OH CINCINNATI	BPCDT	20080306AAP	CP

Figure 3

10A OH SHAKER HEIGHTS	DTVPLN	DTVP0285	PLN
10A PA HARRISBURG	DTVPLN	DTVP0289	PLN
10A WV GRANDVIEW	DTVPLN	DTVP0301	PLN
9A OH STEUBENVILLE	USERRECORD01		APP
Percent new IX = 0.3210%			
Result key:	65		
Scenario	9	Affected station	10
Before Analysis			
Results for: 10A WV CLARKSBURG	DTVPLN	DTVP0300	PLN
HAAT 235.0 m, ATV ERP 30.0 kW			
	POPULATION	AREA (sq km)	
within Noise Limited Contour	731402	25497.8	
not affected by terrain losses	595303	23053.5	
lost to NTSC IX	0	0.0	
lost to additional IX by ATV	27752	1083.2	
lost to ATV IX only	27752	1083.2	
lost to all IX	27752	1083.2	
Potential Interfering Stations Included in above Scenario 9			
10A OH CINCINNATI	DTVPLN	DTVP0284	PLN
10A OH SHAKER HEIGHTS	BLCDT	19991110AAR	LIC
10A PA HARRISBURG	BLCDT	20040812AAH	LIC
10A WV GRANDVIEW	BMPEDT	20080214ACT	CP
9A OH STEUBENVILLE	DTVPLN	DTVP0214	PLN
After Analysis			
Results for: 10A WV CLARKSBURG	DTVPLN	DTVP0300	PLN
HAAT 235.0 m, ATV ERP 30.0 kW			
	POPULATION	AREA (sq km)	
within Noise Limited Contour	731402	25497.8	
not affected by terrain losses	595303	23053.5	
lost to NTSC IX	0	0.0	
lost to additional IX by ATV	29569	1115.4	
lost to ATV IX only	29569	1115.4	
lost to all IX	29569	1115.4	
Potential Interfering Stations Included in above Scenario 9			
10A OH CINCINNATI	DTVPLN	DTVP0284	PLN
10A OH SHAKER HEIGHTS	BLCDT	19991110AAR	LIC
10A PA HARRISBURG	BLCDT	20040812AAH	LIC
10A WV GRANDVIEW	BMPEDT	20080214ACT	CP
9A OH STEUBENVILLE	USERRECORD01		APP
Percent new IX = 0.3201%			
Result key:	66		
Scenario	10	Affected station	10
Before Analysis			
Results for: 10A WV CLARKSBURG	DTVPLN	DTVP0300	PLN
HAAT 235.0 m, ATV ERP 30.0 kW			
	POPULATION	AREA (sq km)	
within Noise Limited Contour	731402	25497.8	
not affected by terrain losses	595303	23053.5	
lost to NTSC IX	0	0.0	
lost to additional IX by ATV	29189	1159.7	
lost to ATV IX only	29189	1159.7	
lost to all IX	29189	1159.7	
Potential Interfering Stations Included in above Scenario 10			
10A OH CINCINNATI	DTVPLN	DTVP0284	PLN
10A OH SHAKER HEIGHTS	BLCDT	19991110AAR	LIC
10A PA HARRISBURG	BLCDT	20040812AAH	LIC
10A WV GRANDVIEW	DTVPLN	DTVP0301	PLN

Figure 3

9A OH STEUBENVILLE	DTVPLN	DTVP0214	PLN
After Analysis			
Results for: 10A WV CLARKSBURG	DTVPLN	DTVP0300	PLN
HAAT 235.0 m, ATV ERP 30.0 kW			
	POPULATION	AREA (sq km)	
within Noise Limited Contour	731402	25497.8	
not affected by terrain losses	595303	23053.5	
lost to NTSC IX	0	0.0	
lost to additional IX by ATV	31006	1191.9	
lost to ATV IX only	31006	1191.9	
lost to all IX	31006	1191.9	
Potential Interfering Stations Included in above Scenario			10
10A OH CINCINNATI	DTVPLN	DTVP0284	PLN
10A OH SHAKER HEIGHTS	BLCDT	19991110AAR	LIC
10A PA HARRISBURG	BLCDT	20040812AAH	LIC
10A WV GRANDVIEW	DTVPLN	DTVP0301	PLN
9A OH STEUBENVILLE	USERRECORD01	APP	
Percent new IX =	0.3210%		
Result key:	67		
Scenario	11 Affected station	10	
Before Analysis			
Results for: 10A WV CLARKSBURG	DTVPLN	DTVP0300	PLN
HAAT 235.0 m, ATV ERP 30.0 kW			
	POPULATION	AREA (sq km)	
within Noise Limited Contour	731402	25497.8	
not affected by terrain losses	595303	23053.5	
lost to NTSC IX	0	0.0	
lost to additional IX by ATV	27752	1083.2	
lost to ATV IX only	27752	1083.2	
lost to all IX	27752	1083.2	
Potential Interfering Stations Included in above Scenario			11
10A OH CINCINNATI	DTVPLN	DTVP0284	PLN
10A OH SHAKER HEIGHTS	BLCDT	19991110AAR	LIC
10A PA HARRISBURG	DTVPLN	DTVP0289	PLN
10A WV GRANDVIEW	BMPEDT	20080214ACT	CP
9A OH STEUBENVILLE	DTVPLN	DTVP0214	PLN
After Analysis			
Results for: 10A WV CLARKSBURG	DTVPLN	DTVP0300	PLN
HAAT 235.0 m, ATV ERP 30.0 kW			
	POPULATION	AREA (sq km)	
within Noise Limited Contour	731402	25497.8	
not affected by terrain losses	595303	23053.5	
lost to NTSC IX	0	0.0	
lost to additional IX by ATV	29569	1115.4	
lost to ATV IX only	29569	1115.4	
lost to all IX	29569	1115.4	
Potential Interfering Stations Included in above Scenario			11
10A OH CINCINNATI	DTVPLN	DTVP0284	PLN
10A OH SHAKER HEIGHTS	BLCDT	19991110AAR	LIC
10A PA HARRISBURG	DTVPLN	DTVP0289	PLN
10A WV GRANDVIEW	BMPEDT	20080214ACT	CP
9A OH STEUBENVILLE	USERRECORD01	APP	
Percent new IX =	0.3201%		
Result key:	68		
Scenario	12 Affected station	10	
Before Analysis			

Figure 3

Results for: 10A WV CLARKSBURG	DTVPLN	DTVP0300	PLN
HAAT 235.0 m, ATV ERP 30.0 kW			
	POPULATION	AREA (sq km)	
within Noise Limited Contour	731402	25497.8	
not affected by terrain losses	595303	23053.5	
lost to NTSC IX	0	0.0	
lost to additional IX by ATV	29189	1159.7	
lost to ATV IX only	29189	1159.7	
lost to all IX	29189	1159.7	
Potential Interfering Stations Included in above Scenario			12
10A OH CINCINNATI	DTVPLN	DTVP0284	PLN
10A OH SHAKER HEIGHTS	BLCDT	19991110AAR	LIC
10A PA HARRISBURG	DTVPLN	DTVP0289	PLN
10A WV GRANDVIEW	DTVPLN	DTVP0301	PLN
9A OH STEUBENVILLE	DTVPLN	DTVP0214	PLN
After Analysis			
Results for: 10A WV CLARKSBURG	DTVPLN	DTVP0300	PLN
HAAT 235.0 m, ATV ERP 30.0 kW			
	POPULATION	AREA (sq km)	
within Noise Limited Contour	731402	25497.8	
not affected by terrain losses	595303	23053.5	
lost to NTSC IX	0	0.0	
lost to additional IX by ATV	31006	1191.9	
lost to ATV IX only	31006	1191.9	
lost to all IX	31006	1191.9	
Potential Interfering Stations Included in above Scenario			12
10A OH CINCINNATI	DTVPLN	DTVP0284	PLN
10A OH SHAKER HEIGHTS	BLCDT	19991110AAR	LIC
10A PA HARRISBURG	DTVPLN	DTVP0289	PLN
10A WV GRANDVIEW	DTVPLN	DTVP0301	PLN
9A OH STEUBENVILLE	USERRECORD01	APP	
Percent new IX =	0.3210%		
Result key:	69		
Scenario	13 Affected station	10	
Before Analysis			
Results for: 10A WV CLARKSBURG	DTVPLN	DTVP0300	PLN
HAAT 235.0 m, ATV ERP 30.0 kW			
	POPULATION	AREA (sq km)	
within Noise Limited Contour	731402	25497.8	
not affected by terrain losses	595303	23053.5	
lost to NTSC IX	0	0.0	
lost to additional IX by ATV	27752	1083.2	
lost to ATV IX only	27752	1083.2	
lost to all IX	27752	1083.2	
Potential Interfering Stations Included in above Scenario			13
10A OH CINCINNATI	DTVPLN	DTVP0284	PLN
10A OH SHAKER HEIGHTS	DTVPLN	DTVP0285	PLN
10A PA HARRISBURG	BLCDT	20040812AAH	LIC
10A WV GRANDVIEW	BMPEDT	20080214ACT	CP
9A OH STEUBENVILLE	DTVPLN	DTVP0214	PLN
After Analysis			
Results for: 10A WV CLARKSBURG	DTVPLN	DTVP0300	PLN
HAAT 235.0 m, ATV ERP 30.0 kW			
	POPULATION	AREA (sq km)	
within Noise Limited Contour	731402	25497.8	
not affected by terrain losses	595303	23053.5	
lost to NTSC IX	0	0.0	

Figure 3

lost to additional IX by ATV	29569	1115.4	
lost to ATV IX only	29569	1115.4	
lost to all IX	29569	1115.4	
Potential Interfering Stations Included in above Scenario 13			
10A OH CINCINNATI	DTVPLN	DTVP0284	PLN
10A OH SHAKER HEIGHTS	DTVPLN	DTVP0285	PLN
10A PA HARRISBURG	BLCDDT	20040812AAH	LIC
10A WV GRANDVIEW	BMPEDT	20080214ACT	CP
9A OH STEUBENVILLE	USERRECORD01		APP
Percent new IX = 0.3201%			
Result key:	70		
Scenario	14	Affected station	10
Before Analysis			
Results for: 10A WV CLARKSBURG	DTVPLN	DTVP0300	PLN
HAAT 235.0 m, ATV ERP 30.0 kW			
	POPULATION	AREA (sq km)	
within Noise Limited Contour	731402	25497.8	
not affected by terrain losses	595303	23053.5	
lost to NTSC IX	0	0.0	
lost to additional IX by ATV	29189	1159.7	
lost to ATV IX only	29189	1159.7	
lost to all IX	29189	1159.7	
Potential Interfering Stations Included in above Scenario 14			
10A OH CINCINNATI	DTVPLN	DTVP0284	PLN
10A OH SHAKER HEIGHTS	DTVPLN	DTVP0285	PLN
10A PA HARRISBURG	BLCDDT	20040812AAH	LIC
10A WV GRANDVIEW	DTVPLN	DTVP0301	PLN
9A OH STEUBENVILLE	DTVPLN	DTVP0214	PLN
After Analysis			
Results for: 10A WV CLARKSBURG	DTVPLN	DTVP0300	PLN
HAAT 235.0 m, ATV ERP 30.0 kW			
	POPULATION	AREA (sq km)	
within Noise Limited Contour	731402	25497.8	
not affected by terrain losses	595303	23053.5	
lost to NTSC IX	0	0.0	
lost to additional IX by ATV	31006	1191.9	
lost to ATV IX only	31006	1191.9	
lost to all IX	31006	1191.9	
Potential Interfering Stations Included in above Scenario 14			
10A OH CINCINNATI	DTVPLN	DTVP0284	PLN
10A OH SHAKER HEIGHTS	DTVPLN	DTVP0285	PLN
10A PA HARRISBURG	BLCDDT	20040812AAH	LIC
10A WV GRANDVIEW	DTVPLN	DTVP0301	PLN
9A OH STEUBENVILLE	USERRECORD01		APP
Percent new IX = 0.3210%			
Result key:	71		
Scenario	15	Affected station	10
Before Analysis			
Results for: 10A WV CLARKSBURG	DTVPLN	DTVP0300	PLN
HAAT 235.0 m, ATV ERP 30.0 kW			
	POPULATION	AREA (sq km)	
within Noise Limited Contour	731402	25497.8	
not affected by terrain losses	595303	23053.5	
lost to NTSC IX	0	0.0	
lost to additional IX by ATV	27752	1083.2	
lost to ATV IX only	27752	1083.2	
lost to all IX	27752	1083.2	

Figure 3

Potential Interfering Stations Included in above Scenario 15			
10A OH CINCINNATI	DTVPLN	DTVP0284	PLN
10A OH SHAKER HEIGHTS	DTVPLN	DTVP0285	PLN
10A PA HARRISBURG	DTVPLN	DTVP0289	PLN
10A WV GRANDVIEW	BMPEDT	20080214ACT	CP
9A OH STEUBENVILLE	DTVPLN	DTVP0214	PLN
After Analysis			
Results for: 10A WV CLARKSBURG	DTVPLN	DTVP0300	PLN
HAAT 235.0 m, ATV ERP 30.0 kW			
	POPULATION	AREA (sq km)	
within Noise Limited Contour	731402	25497.8	
not affected by terrain losses	595303	23053.5	
lost to NTSC IX	0	0.0	
lost to additional IX by ATV	29569	1115.4	
lost to ATV IX only	29569	1115.4	
lost to all IX	29569	1115.4	
Potential Interfering Stations Included in above Scenario 15			
10A OH CINCINNATI	DTVPLN	DTVP0284	PLN
10A OH SHAKER HEIGHTS	DTVPLN	DTVP0285	PLN
10A PA HARRISBURG	DTVPLN	DTVP0289	PLN
10A WV GRANDVIEW	BMPEDT	20080214ACT	CP
9A OH STEUBENVILLE	USERRECORD01		APP
Percent new IX = 0.3201%			
Result key:	72		
Scenario	16	Affected station	10
Before Analysis			
Results for: 10A WV CLARKSBURG	DTVPLN	DTVP0300	PLN
HAAT 235.0 m, ATV ERP 30.0 kW			
	POPULATION	AREA (sq km)	
within Noise Limited Contour	731402	25497.8	
not affected by terrain losses	595303	23053.5	
lost to NTSC IX	0	0.0	
lost to additional IX by ATV	29189	1159.7	
lost to ATV IX only	29189	1159.7	
lost to all IX	29189	1159.7	
Potential Interfering Stations Included in above Scenario 16			
10A OH CINCINNATI	DTVPLN	DTVP0284	PLN
10A OH SHAKER HEIGHTS	DTVPLN	DTVP0285	PLN
10A PA HARRISBURG	DTVPLN	DTVP0289	PLN
10A WV GRANDVIEW	DTVPLN	DTVP0301	PLN
9A OH STEUBENVILLE	DTVPLN	DTVP0214	PLN
After Analysis			
Results for: 10A WV CLARKSBURG	DTVPLN	DTVP0300	PLN
HAAT 235.0 m, ATV ERP 30.0 kW			
	POPULATION	AREA (sq km)	
within Noise Limited Contour	731402	25497.8	
not affected by terrain losses	595303	23053.5	
lost to NTSC IX	0	0.0	
lost to additional IX by ATV	31006	1191.9	
lost to ATV IX only	31006	1191.9	
lost to all IX	31006	1191.9	
Potential Interfering Stations Included in above Scenario 16			
10A OH CINCINNATI	DTVPLN	DTVP0284	PLN
10A OH SHAKER HEIGHTS	DTVPLN	DTVP0285	PLN
10A PA HARRISBURG	DTVPLN	DTVP0289	PLN
10A WV GRANDVIEW	DTVPLN	DTVP0301	PLN



### Figure 3

9A OH STEUBENVILLE	USERRECORD01	APP		
Percent new IX = 0.3210%				
Result key: 73				
Scenario	17	Affected station	10	
Before Analysis				
Results for: 10A WV CLARKSBURG				
HAAT	235.0 m,	ATV ERP	30.0 kW	PLN
		POPULATION	AREA (sq km)	
within Noise Limited Contour		731402	25497.8	
not affected by terrain losses		595303	23053.5	
lost to NTSC IX		0	0.0	
lost to additional IX by ATV		27752	1083.2	
lost to ATV IX only		27752	1083.2	
lost to all IX		27752	1083.2	
Potential Interfering Stations Included in above Scenario 17				
10A OH CINCINNATI	BLCDT	20041230ACA	LIC	
10A OH SHAKER HEIGHTS	BLCDT	19991110AAR	LIC	
10A PA HARRISBURG	BLCDT	20040812AAH	LIC	
10A WV GRANDVIEW	BMPEDT	20080214ACT	CP	
9A OH STEUBENVILLE	DTVPLN	DTV00214	PLN	
After Analysis				
Results for: 10A WV CLARKSBURG				
HAAT	235.0 m,	ATV ERP	30.0 kW	PLN
		POPULATION	AREA (sq km)	
within Noise Limited Contour		731402	25497.8	
not affected by terrain losses		595303	23053.5	
lost to NTSC IX		0	0.0	
lost to additional IX by ATV		29569	1115.4	
lost to ATV IX only		29569	1115.4	
lost to all IX		29569	1115.4	
Potential Interfering Stations Included in above Scenario 17				
10A OH CINCINNATI	BLCDT	20041230ACA	LIC	
10A OH SHAKER HEIGHTS	BLCDT	19991110AAR	LIC	
10A PA HARRISBURG	BLCDT	20040812AAH	LIC	
10A WV GRANDVIEW	BMPEDT	20080214ACT	CP	
9A OH STEUBENVILLE	USERRECORD01	APP		
Percent new IX = 0.3201%				
Result key: 74				
Scenario	18	Affected station	10	
Before Analysis				
Results for: 10A WV CLARKSBURG				
HAAT	235.0 m,	ATV ERP	30.0 kW	PLN
		POPULATION	AREA (sq km)	
within Noise Limited Contour		731402	25497.8	
not affected by terrain losses		595303	23053.5	
lost to NTSC IX		0	0.0	
lost to additional IX by ATV		29189	1159.7	
lost to ATV IX only		29189	1159.7	
lost to all IX		29189	1159.7	
Potential Interfering Stations Included in above Scenario 18				
10A OH CINCINNATI	BLCDT	20041230ACA	LIC	
10A OH SHAKER HEIGHTS	BLCDT	19991110AAR	LIC	
10A PA HARRISBURG	BLCDT	20040812AAH	LIC	
10A WV GRANDVIEW	DTVPLN	DTV00301	PLN	
9A OH STEUBENVILLE	DTVPLN	DTV00214	PLN	
After Analysis				

### Figure 3

Results for: 10A WV CLARKSBURG	DTVPLN	DTVP0300	PLN
HAAT 235.0 m, ATV ERP 30.0 kW			
	POPULATION	AREA (sq km)	
within Noise Limited Contour	731402	25497.8	
not affected by terrain losses	595303	23053.5	
lost to NTSC IX	0	0.0	
lost to additional IX by ATV	31006	1191.9	
lost to ATV IX only	31006	1191.9	
lost to all IX	31006	1191.9	
Potential Interfering Stations Included in above Scenario			18
10A OH CINCINNATI	BLCDT	20041230ACA	LIC
10A OH SHAKER HEIGHTS	BLCDT	19991110AAR	LIC
10A PA HARRISBURG	BLCDT	20040812AAH	LIC
10A WV GRANDVIEW	DTVPLN	DTVP0301	PLN
9A OH STEUBENVILLE	USERRECORD01	APP	
Percent new IX =	0.3210%		
Result key:	75		
Scenario	19 Affected station	10	
Before Analysis			
Results for: 10A WV CLARKSBURG	DTVPLN	DTVP0300	PLN
HAAT 235.0 m, ATV ERP 30.0 kW			
	POPULATION	AREA (sq km)	
within Noise Limited Contour	731402	25497.8	
not affected by terrain losses	595303	23053.5	
lost to NTSC IX	0	0.0	
lost to additional IX by ATV	27752	1083.2	
lost to ATV IX only	27752	1083.2	
lost to all IX	27752	1083.2	
Potential Interfering Stations Included in above Scenario			19
10A OH CINCINNATI	BLCDT	20041230ACA	LIC
10A OH SHAKER HEIGHTS	BLCDT	19991110AAR	LIC
10A PA HARRISBURG	DTVPLN	DTVP0289	PLN
10A WV GRANDVIEW	BMPEDT	20080214ACT	CP
9A OH STEUBENVILLE	DTVPLN	DTVP0214	PLN
After Analysis			
Results for: 10A WV CLARKSBURG	DTVPLN	DTVP0300	PLN
HAAT 235.0 m, ATV ERP 30.0 kW			
	POPULATION	AREA (sq km)	
within Noise Limited Contour	731402	25497.8	
not affected by terrain losses	595303	23053.5	
lost to NTSC IX	0	0.0	
lost to additional IX by ATV	29569	1115.4	
lost to ATV IX only	29569	1115.4	
lost to all IX	29569	1115.4	
Potential Interfering Stations Included in above Scenario			19
10A OH CINCINNATI	BLCDT	20041230ACA	LIC
10A OH SHAKER HEIGHTS	BLCDT	19991110AAR	LIC
10A PA HARRISBURG	DTVPLN	DTVP0289	PLN
10A WV GRANDVIEW	BMPEDT	20080214ACT	CP
9A OH STEUBENVILLE	USERRECORD01	APP	
Percent new IX =	0.3201%		
Result key:	76		
Scenario	20 Affected station	10	
Before Analysis			
Results for: 10A WV CLARKSBURG	DTVPLN	DTVP0300	PLN
HAAT 235.0 m, ATV ERP 30.0 kW			

Figure 3

		POPULATION	AREA (sq km)	
within Noise Limited Contour		731402	25497.8	
not affected by terrain losses		595303	23053.5	
lost to NTSC IX		0	0.0	
lost to additional IX by ATV		29189	1159.7	
lost to ATV IX only		29189	1159.7	
lost to all IX		29189	1159.7	
Potential Interfering Stations Included in above Scenario	20			
10A OH CINCINNATI	BLCDDT	20041230ACA	LIC	
10A OH SHAKER HEIGHTS	BLCDDT	19991110AAR	LIC	
10A PA HARRISBURG	DTVPLN	DTVP0289	PLN	
10A WV GRANDVIEW	DTVPLN	DTVP0301	PLN	
9A OH STEUBENVILLE	DTVPLN	DTVP0214	PLN	
After Analysis				
Results for: 10A WV CLARKSBURG	DTVPLN	DTVP0300	PLN	
HAAT 235.0 m, ATV ERP 30.0 kW				
		POPULATION	AREA (sq km)	
within Noise Limited Contour		731402	25497.8	
not affected by terrain losses		595303	23053.5	
lost to NTSC IX		0	0.0	
lost to additional IX by ATV		31006	1191.9	
lost to ATV IX only		31006	1191.9	
lost to all IX		31006	1191.9	
Potential Interfering Stations Included in above Scenario	20			
10A OH CINCINNATI	BLCDDT	20041230ACA	LIC	
10A OH SHAKER HEIGHTS	BLCDDT	19991110AAR	LIC	
10A PA HARRISBURG	DTVPLN	DTVP0289	PLN	
10A WV GRANDVIEW	DTVPLN	DTVP0301	PLN	
9A OH STEUBENVILLE	USERRECORD01		APP	
Percent new IX =	0.3210%			
Result key:	77			
Scenario	21 Affected station	10		
Before Analysis				
Results for: 10A WV CLARKSBURG	DTVPLN	DTVP0300	PLN	
HAAT 235.0 m, ATV ERP 30.0 kW				
		POPULATION	AREA (sq km)	
within Noise Limited Contour		731402	25497.8	
not affected by terrain losses		595303	23053.5	
lost to NTSC IX		0	0.0	
lost to additional IX by ATV		27752	1083.2	
lost to ATV IX only		27752	1083.2	
lost to all IX		27752	1083.2	
Potential Interfering Stations Included in above Scenario	21			
10A OH CINCINNATI	BLCDDT	20041230ACA	LIC	
10A OH SHAKER HEIGHTS	DTVPLN	DTVP0285	PLN	
10A PA HARRISBURG	BLCDDT	20040812AAH	LIC	
10A WV GRANDVIEW	BMPEDT	20080214ACT	CP	
9A OH STEUBENVILLE	DTVPLN	DTVP0214	PLN	
After Analysis				
Results for: 10A WV CLARKSBURG	DTVPLN	DTVP0300	PLN	
HAAT 235.0 m, ATV ERP 30.0 kW				
		POPULATION	AREA (sq km)	
within Noise Limited Contour		731402	25497.8	
not affected by terrain losses		595303	23053.5	
lost to NTSC IX		0	0.0	
lost to additional IX by ATV		29569	1115.4	
lost to ATV IX only		29569	1115.4	
lost to all IX		29569	1115.4	

Figure 3

Potential Interfering Stations Included in above Scenario	21			
10A OH CINCINNATI	BLCDDT	20041230ACA	LIC	
10A OH SHAKER HEIGHTS	DTVPLN	DTVP0285	PLN	
10A PA HARRISBURG	BLCDDT	20040812AAH	LIC	
10A WV GRANDVIEW	BMPEDT	20080214ACT	CP	
9A OH STEUBENVILLE	USERRECORD01		APP	
Percent new IX =	0.3201%			
Result key:	78			
Scenario	22 Affected station	10		
Before Analysis				
Results for: 10A WV CLARKSBURG	DTVPLN	DTVP0300	PLN	
HAAT 235.0 m, ATV ERP 30.0 kW				
		POPULATION	AREA (sq km)	
within Noise Limited Contour		731402	25497.8	
not affected by terrain losses		595303	23053.5	
lost to NTSC IX		0	0.0	
lost to additional IX by ATV		29189	1159.7	
lost to ATV IX only		29189	1159.7	
lost to all IX		29189	1159.7	
Potential Interfering Stations Included in above Scenario	22			
10A OH CINCINNATI	BLCDDT	20041230ACA	LIC	
10A OH SHAKER HEIGHTS	DTVPLN	DTVP0285	PLN	
10A PA HARRISBURG	BLCDDT	20040812AAH	LIC	
10A WV GRANDVIEW	DTVPLN	DTVP0301	PLN	
9A OH STEUBENVILLE	DTVPLN	DTVP0214	PLN	
After Analysis				
Results for: 10A WV CLARKSBURG	DTVPLN	DTVP0300	PLN	
HAAT 235.0 m, ATV ERP 30.0 kW				
		POPULATION	AREA (sq km)	
within Noise Limited Contour		731402	25497.8	
not affected by terrain losses		595303	23053.5	
lost to NTSC IX		0	0.0	
lost to additional IX by ATV		31006	1191.9	
lost to ATV IX only		31006	1191.9	
lost to all IX		31006	1191.9	
Potential Interfering Stations Included in above Scenario	22			
10A OH CINCINNATI	BLCDDT	20041230ACA	LIC	
10A OH SHAKER HEIGHTS	DTVPLN	DTVP0285	PLN	
10A PA HARRISBURG	BLCDDT	20040812AAH	LIC	
10A WV GRANDVIEW	DTVPLN	DTVP0301	PLN	
9A OH STEUBENVILLE	USERRECORD01		APP	
Percent new IX =	0.3210%			
Result key:	79			
Scenario	23 Affected station	10		
Before Analysis				
Results for: 10A WV CLARKSBURG	DTVPLN	DTVP0300	PLN	
HAAT 235.0 m, ATV ERP 30.0 kW				
		POPULATION	AREA (sq km)	
within Noise Limited Contour		731402	25497.8	
not affected by terrain losses		595303	23053.5	
lost to NTSC IX		0	0.0	
lost to additional IX by ATV		27752	1083.2	
lost to ATV IX only		27752	1083.2	
lost to all IX		27752	1083.2	
Potential Interfering Stations Included in above Scenario	23			

Figure 3

10A OH CINCINNATI	BLCDDT	20041230ACA	LIC
10A OH SHAKER HEIGHTS	DTVPLN	DTVP0285	PLN
10A PA HARRISBURG	DTVPLN	DTVP0289	PLN
10A WV GRANDVIEW	BMPEDT	20080214ACT	CP
9A OH STEUBENVILLE	DTVPLN	DTVP0214	PLN

## After Analysis

Results for: 10A WV CLARKSBURG	DTVPLN	DTVP0300	PLN
HAAT 235.0 m, ATV ERP 30.0 kW			
	POPULATION	AREA (sq km)	
within Noise Limited Contour	731402	25497.8	
not affected by terrain losses	595303	23053.5	
lost to NTSC IX	0	0.0	
lost to additional IX by ATV	29569	1115.4	
lost to ATV IX only	29569	1115.4	
lost to all IX	29569	1115.4	

Potential Interfering Stations Included in above Scenario 23

10A OH CINCINNATI	BLCDDT	20041230ACA	LIC
10A OH SHAKER HEIGHTS	DTVPLN	DTVP0285	PLN
10A PA HARRISBURG	DTVPLN	DTVP0289	PLN
10A WV GRANDVIEW	BMPEDT	20080214ACT	CP
9A OH STEUBENVILLE	USERRECORD01		APP

Percent new IX = 0.3201%

Result key: 80  
 Scenario 24 Affected station 10  
 Before Analysis

Results for: 10A WV CLARKSBURG	DTVPLN	DTVP0300	PLN
HAAT 235.0 m, ATV ERP 30.0 kW			
	POPULATION	AREA (sq km)	
within Noise Limited Contour	731402	25497.8	
not affected by terrain losses	595303	23053.5	
lost to NTSC IX	0	0.0	
lost to additional IX by ATV	29189	1159.7	
lost to ATV IX only	29189	1159.7	
lost to all IX	29189	1159.7	

Potential Interfering Stations Included in above Scenario 24

10A OH CINCINNATI	BLCDDT	20041230ACA	LIC
10A OH SHAKER HEIGHTS	DTVPLN	DTVP0285	PLN
10A PA HARRISBURG	DTVPLN	DTVP0289	PLN
10A WV GRANDVIEW	DTVPLN	DTVP0301	PLN
9A OH STEUBENVILLE	DTVPLN	DTVP0214	PLN

## After Analysis

Results for: 10A WV CLARKSBURG	DTVPLN	DTVP0300	PLN
HAAT 235.0 m, ATV ERP 30.0 kW			
	POPULATION	AREA (sq km)	
within Noise Limited Contour	731402	25497.8	
not affected by terrain losses	595303	23053.5	
lost to NTSC IX	0	0.0	
lost to additional IX by ATV	31006	1191.9	
lost to ATV IX only	31006	1191.9	
lost to all IX	31006	1191.9	

Potential Interfering Stations Included in above Scenario 24

10A OH CINCINNATI	BLCDDT	20041230ACA	LIC
10A OH SHAKER HEIGHTS	DTVPLN	DTVP0285	PLN
10A PA HARRISBURG	DTVPLN	DTVP0289	PLN
10A WV GRANDVIEW	DTVPLN	DTVP0301	PLN
9A OH STEUBENVILLE	USERRECORD01		APP

Percent new IX = 0.3210%

Figure 3

Worst case new IX 0.3210% Scenario 2

#####

## Analysis of Interference to Affected Station 11

Analysis of current record  
 Channel Call City/State Application Ref. No.  
 09 WTOV-TV STEUBENVILLE OH USERRECORD-01

## Stations Potentially Affecting This Station

Chan	Call	City/State	Dist(km)	Status	Application Ref. No.
08	WJW	CLEVELAND OH	146.1	PLN	DTVPLN -DTVP0152
08	WJW	CLEVELAND OH	146.1	CP	BPCDDT -20080311AAN
08	WWCP-TV	JOHNSTOWN PA	125.9	CP	BPCDDT -20080408ABF
08	WWCP-TV	JOHNSTOWN PA	125.9	PLN	DTVPLN -DTVP0158
09	WUSA	WASHINGTON DC	340.2	CP MOD	BMPDDT -20080425ABL
09	WUSA	WASHINGTON DC	340.2	PLN	DTVPLN -DTVP0186
10	WOIO	SHAKER HEIGHTS OH	147.1	LIC	BLCDDT -19991110AAR
10	WOIO	SHAKER HEIGHTS OH	147.1	PLN	DTVPLN -DTVP0285
10	WVFX	CLARKSBURG WV	118.2	CP MOD	BMPDDT -20020930AAV
10	WVFX	CLARKSBURG WV	118.2	PLN	DTVPLN -DTVP0300

Total scenarios = 16

Result key: 81  
 Scenario 1 Affected station 11  
 Before Analysis

Results for: 9A OH STEUBENVILLE	USERRECORD01	APP
HAAT 282.0 m, ATV ERP 26.2 kW		
	POPULATION	AREA (sq km)
within Noise Limited Contour	3966815	30874.3
not affected by terrain losses	3701371	28445.9
lost to NTSC IX	0	0.0
lost to additional IX by ATV	13832	188.6
lost to ATV IX only	13832	188.6
lost to all IX	13832	188.6

Potential Interfering Stations Included in above Scenario 1

8A OH CLEVELAND	DTVPLN	DTVP0152	PLN
8A PA JOHNSTOWN	BPCDDT	20080408ABF	CP
9A DC WASHINGTON	BMPDDT	20080425ABL	CP
10A WV CLARKSBURG	BMPDDT	20020930AAV	CP

Result key: 82  
 Scenario 2 Affected station 11  
 Before Analysis

Results for: 9A OH STEUBENVILLE	USERRECORD01	APP
HAAT 282.0 m, ATV ERP 26.2 kW		
	POPULATION	AREA (sq km)
within Noise Limited Contour	3966815	30874.3
not affected by terrain losses	3701371	28445.9
lost to NTSC IX	0	0.0
lost to additional IX by ATV	13832	188.6
lost to ATV IX only	13832	188.6
lost to all IX	13832	188.6

Potential Interfering Stations Included in above Scenario 2

8A OH CLEVELAND	DTVPLN	DTVP0152	PLN
8A PA JOHNSTOWN	BPCDDT	20080408ABF	CP
9A DC WASHINGTON	BMPDDT	20080425ABL	CP
10A WV CLARKSBURG	DTVPLN	DTVP0300	PLN

Figure 3

Result key:	83		
Scenario	3	Affected station	11
Before Analysis			
Results for:	9A OH STEUBENVILLE	USERRECORD01	APP
HAAT	282.0 m, ATV ERP	26.2 kW	
	POPULATION	AREA (sq km)	
within Noise Limited Contour	3966815	30874.3	
not affected by terrain losses	3701371	28445.9	
lost to NTSC IX	0	0.0	
lost to additional IX by ATV	13832	188.6	
lost to ATV IX only	13832	188.6	
lost to all IX	13832	188.6	
Potential Interfering Stations Included in above Scenario	3		
8A OH CLEVELAND	DTVPLN	DTVP0152	PLN
8A PA JOHNSTOWN	BPCDT	20080408ABF	CP
9A DC WASHINGTON	DTVPLN	DTVP0186	PLN
10A WV CLARKSBURG	BMPCDT	20020930AAV	CP
Result key:	84		
Scenario	4	Affected station	11
Before Analysis			
Results for:	9A OH STEUBENVILLE	USERRECORD01	APP
HAAT	282.0 m, ATV ERP	26.2 kW	
	POPULATION	AREA (sq km)	
within Noise Limited Contour	3966815	30874.3	
not affected by terrain losses	3701371	28445.9	
lost to NTSC IX	0	0.0	
lost to additional IX by ATV	13832	188.6	
lost to ATV IX only	13832	188.6	
lost to all IX	13832	188.6	
Potential Interfering Stations Included in above Scenario	4		
8A OH CLEVELAND	DTVPLN	DTVP0152	PLN
8A PA JOHNSTOWN	BPCDT	20080408ABF	CP
9A DC WASHINGTON	DTVPLN	DTVP0186	PLN
10A WV CLARKSBURG	DTVPLN	DTVP0300	PLN
Result key:	85		
Scenario	5	Affected station	11
Before Analysis			
Results for:	9A OH STEUBENVILLE	USERRECORD01	APP
HAAT	282.0 m, ATV ERP	26.2 kW	
	POPULATION	AREA (sq km)	
within Noise Limited Contour	3966815	30874.3	
not affected by terrain losses	3701371	28445.9	
lost to NTSC IX	0	0.0	
lost to additional IX by ATV	11287	176.6	
lost to ATV IX only	11287	176.6	
lost to all IX	11287	176.6	
Potential Interfering Stations Included in above Scenario	5		
8A OH CLEVELAND	DTVPLN	DTVP0152	PLN
8A PA JOHNSTOWN	DTVPLN	DTVP0158	PLN
9A DC WASHINGTON	BMPCDT	20080425ABL	CP
10A WV CLARKSBURG	BMPCDT	20020930AAV	CP
Result key:	86		
Scenario	6	Affected station	11
Before Analysis			
Results for:	9A OH STEUBENVILLE	USERRECORD01	APP
HAAT	282.0 m, ATV ERP	26.2 kW	
	POPULATION	AREA (sq km)	

Figure 3

within Noise Limited Contour	3966815	30874.3	
not affected by terrain losses	3701371	28445.9	
lost to NTSC IX	0	0.0	
lost to additional IX by ATV	11287	176.6	
lost to ATV IX only	11287	176.6	
lost to all IX	11287	176.6	
Potential Interfering Stations Included in above Scenario	6		
8A OH CLEVELAND	DTVPLN	DTVP0152	PLN
8A PA JOHNSTOWN	DTVPLN	DTVP0158	PLN
9A DC WASHINGTON	BMPCDT	20080425ABL	CP
10A WV CLARKSBURG	DTVPLN	DTVP0300	PLN
Result key:	87		
Scenario	7	Affected station	11
Before Analysis			
Results for:	9A OH STEUBENVILLE	USERRECORD01	APP
HAAT	282.0 m, ATV ERP	26.2 kW	
	POPULATION	AREA (sq km)	
within Noise Limited Contour	3966815	30874.3	
not affected by terrain losses	3701371	28445.9	
lost to NTSC IX	0	0.0	
lost to additional IX by ATV	11287	176.6	
lost to ATV IX only	11287	176.6	
lost to all IX	11287	176.6	
Potential Interfering Stations Included in above Scenario	7		
8A OH CLEVELAND	DTVPLN	DTVP0152	PLN
8A PA JOHNSTOWN	DTVPLN	DTVP0158	PLN
9A DC WASHINGTON	DTVPLN	DTVP0186	PLN
10A WV CLARKSBURG	BMPCDT	20020930AAV	CP
Result key:	88		
Scenario	8	Affected station	11
Before Analysis			
Results for:	9A OH STEUBENVILLE	USERRECORD01	APP
HAAT	282.0 m, ATV ERP	26.2 kW	
	POPULATION	AREA (sq km)	
within Noise Limited Contour	3966815	30874.3	
not affected by terrain losses	3701371	28445.9	
lost to NTSC IX	0	0.0	
lost to additional IX by ATV	11287	176.6	
lost to ATV IX only	11287	176.6	
lost to all IX	11287	176.6	
Potential Interfering Stations Included in above Scenario	8		
8A OH CLEVELAND	DTVPLN	DTVP0152	PLN
8A PA JOHNSTOWN	DTVPLN	DTVP0158	PLN
9A DC WASHINGTON	DTVPLN	DTVP0186	PLN
10A WV CLARKSBURG	DTVPLN	DTVP0300	PLN
Result key:	89		
Scenario	9	Affected station	11
Before Analysis			
Results for:	9A OH STEUBENVILLE	USERRECORD01	APP
HAAT	282.0 m, ATV ERP	26.2 kW	
	POPULATION	AREA (sq km)	
within Noise Limited Contour	3966815	30874.3	
not affected by terrain losses	3701371	28445.9	
lost to NTSC IX	0	0.0	
lost to additional IX by ATV	13230	184.6	
lost to ATV IX only	13230	184.6	
lost to all IX	13230	184.6	
Potential Interfering Stations Included in above Scenario	9		

Figure 3

8A OH CLEVELAND	BPCDT	20080311AAN	CP
8A PA JOHNSTOWN	BPCDT	20080408ABF	CP
9A DC WASHINGTON	BMPCDT	20080425ABL	CP
10A WV CLARKSBURG	BMPCDT	20020930AAV	CP
Result key: 90			
Scenario 10	Affected station	11	
Before Analysis			
Results for: 9A OH STEUBENVILLE	USERRECORD01	APP	
HAAT 282.0 m, ATV ERP 26.2 kW			
	POPULATION	AREA (sq km)	
within Noise Limited Contour	3966815	30874.3	
not affected by terrain losses	3701371	28445.9	
lost to NTSC IX	0	0.0	
lost to additional IX by ATV	13230	184.6	
lost to ATV IX only	13230	184.6	
lost to all IX	13230	184.6	
Potential Interfering Stations Included in above Scenario 10			
8A OH CLEVELAND	BPCDT	20080311AAN	CP
8A PA JOHNSTOWN	BPCDT	20080408ABF	CP
9A DC WASHINGTON	BMPCDT	20080425ABL	CP
10A WV CLARKSBURG	DTVPLN	DTVP0300	PLN
Result key: 91			
Scenario 11	Affected station	11	
Before Analysis			
Results for: 9A OH STEUBENVILLE	USERRECORD01	APP	
HAAT 282.0 m, ATV ERP 26.2 kW			
	POPULATION	AREA (sq km)	
within Noise Limited Contour	3966815	30874.3	
not affected by terrain losses	3701371	28445.9	
lost to NTSC IX	0	0.0	
lost to additional IX by ATV	13230	184.6	
lost to ATV IX only	13230	184.6	
lost to all IX	13230	184.6	
Potential Interfering Stations Included in above Scenario 11			
8A OH CLEVELAND	BPCDT	20080311AAN	CP
8A PA JOHNSTOWN	BPCDT	20080408ABF	CP
9A DC WASHINGTON	DTVPLN	DTVP0186	PLN
10A WV CLARKSBURG	BMPCDT	20020930AAV	CP
Result key: 92			
Scenario 12	Affected station	11	
Before Analysis			
Results for: 9A OH STEUBENVILLE	USERRECORD01	APP	
HAAT 282.0 m, ATV ERP 26.2 kW			
	POPULATION	AREA (sq km)	
within Noise Limited Contour	3966815	30874.3	
not affected by terrain losses	3701371	28445.9	
lost to NTSC IX	0	0.0	
lost to additional IX by ATV	13230	184.6	
lost to ATV IX only	13230	184.6	
lost to all IX	13230	184.6	
Potential Interfering Stations Included in above Scenario 12			
8A OH CLEVELAND	BPCDT	20080311AAN	CP
8A PA JOHNSTOWN	BPCDT	20080408ABF	CP
9A DC WASHINGTON	DTVPLN	DTVP0186	PLN
10A WV CLARKSBURG	DTVPLN	DTVP0300	PLN
Result key: 93			
Scenario 13	Affected station	11	

Figure 3

Before Analysis			
Results for: 9A OH STEUBENVILLE	USERRECORD01	APP	
HAAT 282.0 m, ATV ERP 26.2 kW			
	POPULATION	AREA (sq km)	
within Noise Limited Contour	3966815	30874.3	
not affected by terrain losses	3701371	28445.9	
lost to NTSC IX	0	0.0	
lost to additional IX by ATV	10685	172.6	
lost to ATV IX only	10685	172.6	
lost to all IX	10685	172.6	
Potential Interfering Stations Included in above Scenario 13			
8A OH CLEVELAND	BPCDT	20080311AAN	CP
8A PA JOHNSTOWN	DTVPLN	DTVP0158	PLN
9A DC WASHINGTON	BMPCDT	20080425ABL	CP
10A WV CLARKSBURG	BMPCDT	20020930AAV	CP
Result key: 94			
Scenario 14	Affected station	11	
Before Analysis			
Results for: 9A OH STEUBENVILLE	USERRECORD01	APP	
HAAT 282.0 m, ATV ERP 26.2 kW			
	POPULATION	AREA (sq km)	
within Noise Limited Contour	3966815	30874.3	
not affected by terrain losses	3701371	28445.9	
lost to NTSC IX	0	0.0	
lost to additional IX by ATV	10685	172.6	
lost to ATV IX only	10685	172.6	
lost to all IX	10685	172.6	
Potential Interfering Stations Included in above Scenario 14			
8A OH CLEVELAND	BPCDT	20080311AAN	CP
8A PA JOHNSTOWN	DTVPLN	DTVP0158	PLN
9A DC WASHINGTON	BMPCDT	20080425ABL	CP
10A WV CLARKSBURG	DTVPLN	DTVP0300	PLN
Result key: 95			
Scenario 15	Affected station	11	
Before Analysis			
Results for: 9A OH STEUBENVILLE	USERRECORD01	APP	
HAAT 282.0 m, ATV ERP 26.2 kW			
	POPULATION	AREA (sq km)	
within Noise Limited Contour	3966815	30874.3	
not affected by terrain losses	3701371	28445.9	
lost to NTSC IX	0	0.0	
lost to additional IX by ATV	10685	172.6	
lost to ATV IX only	10685	172.6	
lost to all IX	10685	172.6	
Potential Interfering Stations Included in above Scenario 15			
8A OH CLEVELAND	BPCDT	20080311AAN	CP
8A PA JOHNSTOWN	DTVPLN	DTVP0158	PLN
9A DC WASHINGTON	DTVPLN	DTVP0186	PLN
10A WV CLARKSBURG	BMPCDT	20020930AAV	CP
Result key: 96			
Scenario 16	Affected station	11	
Before Analysis			
Results for: 9A OH STEUBENVILLE	USERRECORD01	APP	
HAAT 282.0 m, ATV ERP 26.2 kW			
	POPULATION	AREA (sq km)	
within Noise Limited Contour	3966815	30874.3	
not affected by terrain losses	3701371	28445.9	
lost to NTSC IX	0	0.0	

Figure 3

lost to additional IX by ATV	10685	172.6
lost to ATV IX only	10685	172.6
lost to all IX	10685	172.6

Potential Interfering Stations Included in above Scenario    16

8A OH CLEVELAND	BPCDT	20080311AAN	CP
8A PA JOHNSTOWN	DTVPLN	DTVP0158	PLN
9A DC WASHINGTON	DTVPLN	DTVP0186	PLN
10A WV CLARKSBURG	DTVPLN	DTVP0300	PLN

#####

FINISHED FINISHED FINISHED FINISHED FINISHED FINISHED

# APPENDIX

TRANSMITTING ANTENNA  
VERTICAL PLANE PATTERN



Date  
Call Letters  
Location  
Customer  
Antenna Type

23-Oct-02  
WTOV  
Steubenville, OH  
Cox Communications  
TW-12B9-R

Channel

9

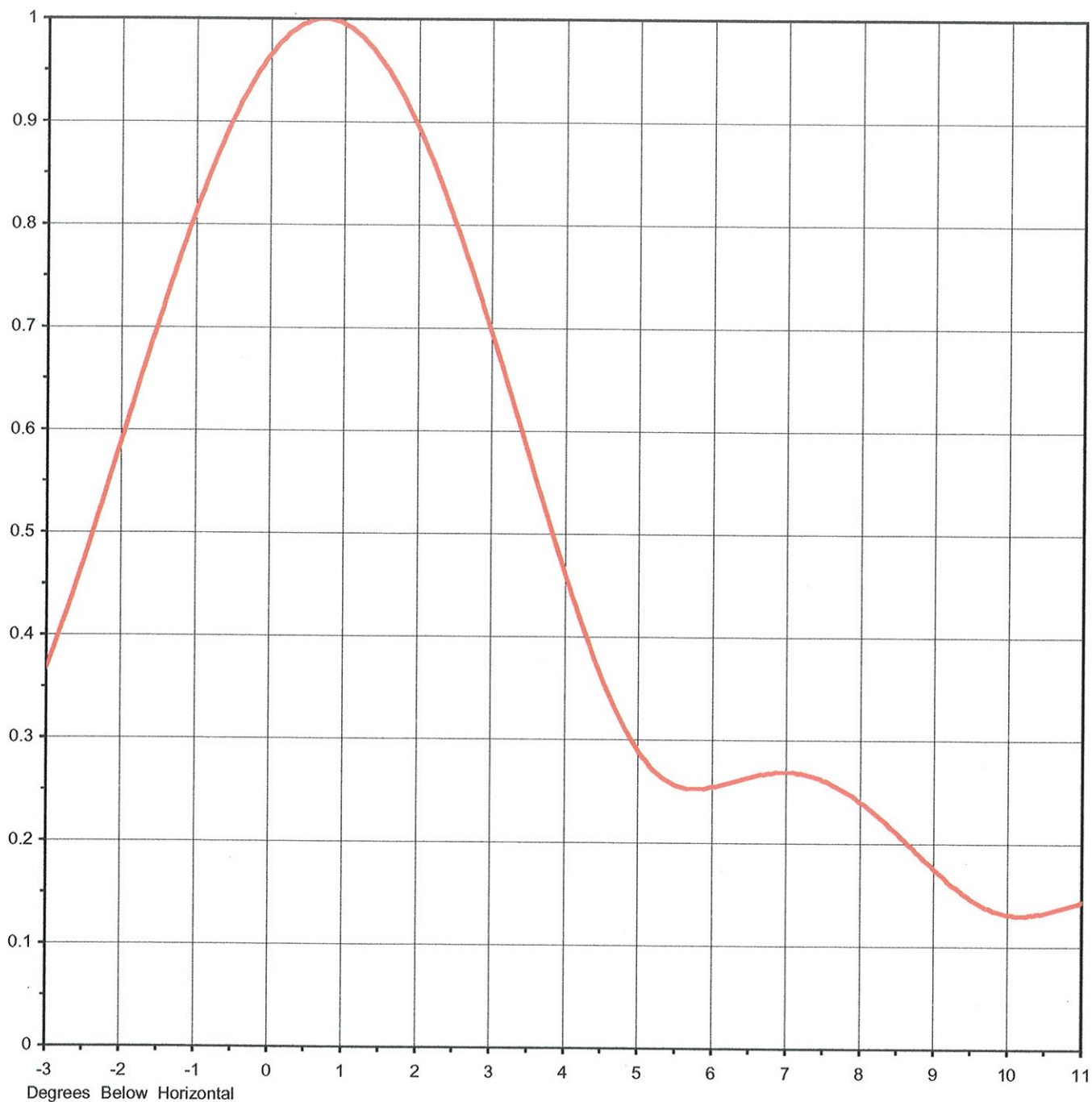
## MEASURED ELEVATION PATTERN

RMS Gain at Main Lobe **12.00 ( 10.79 dB )**

Beam Tilt  
Frequency  
Plane

**0.75 deg**  
**189.00 MHz**

1





Date  
Call Letters  
Location  
Customer  
Antenna Type

23-Oct-02  
**WTOV** Channel **9**  
**Steubenville, OH**  
**Cox Communications**  
**TW-12B9-R**

## MEASURED ELEVATION PATTERNS

187.25 MHz  
189.00 MHz  
190.83 MHz  
191.75 MHz

Plane

1

