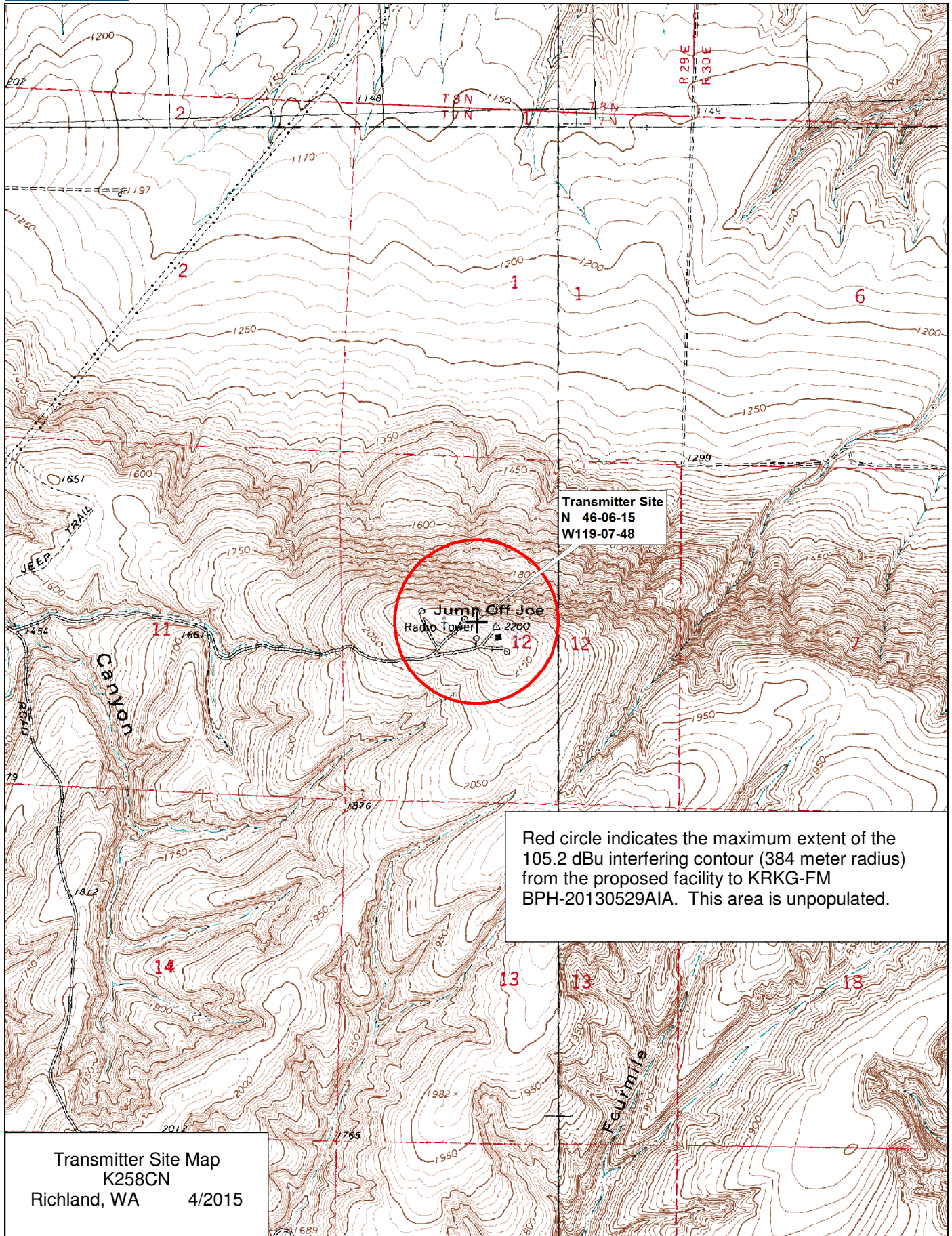


**April 2015**  
**FM Translator K258CN**  
**Richland, Washington Channel 258D**  
**Statement re Input Station Change and Protection to KRKG-FM**

FM translator K258CN has been constructed under the terms of its construction permit, but will implement operation as a fill-in translator for FM station KMMG (Facility ID #4758) rather than for KRKG-FM.

Since the construction permit was granted as a fill-in for KRKG-FM, which holds a construction permit on Channel 261A, the change in input station requires that we address interference protection to the KRKG-FM permit.

The translator transmitter site is located within the 60 dBu protected contour of second-adjacent channel station KRKG-FM 261A Pasco (CP). The proposed site is 20.63 km from the KRKG-FM (CP) transmitter site at a bearing of 135 degrees True. Given the KRKG-FM antenna's 0.880 kW ERP and 241 meter HAAT along this radial, KRKG-FM (CP) places a 65.2 dBu contour at the translator transmitter site. The corresponding interfering contour from the translator is  $65.2 + 40 = 105.2$  dBu. The 105.2 dBu contour would extend at most 384 meters from the transmitting antenna per a Free Space calculation. As is depicted on the attached transmitter site map exhibit, there is no population within this contour. Therefore, the proposed facility is believed to satisfy the requirements of §74.1204(d) with respect to KRKG-FM (CP).



Data use subject to license.

© DeLorme. XMap® 7.

www.delorme.com

