

Proposed Amendment

This amendment to the pending minor change application specifies a change to CH 297. There are no other changes to the minor change application.

A waiver of Section 74.1233(a)(1) is hereby requested due to the displacement of W203AT by WUTU, CH 202, Sasser, GA (BLED-20140409AAI). An interference study determined that it is not technically feasible to operate on a first, second, or third adjacent channel or I.F., thus in order to continue to provide service to listeners this move to an alternate frequency (CH 267) is necessary and believed to be in the public interest to do so.

There will be no change to the 60 dBu coverage area.

	Licensed	Proposed Minor Change	Amendment
Channel	203	267	297
Class	D	D	D
Geographical Coordinates	31 34 41 / 84 11 06	31 34 41 / 84 11 06	31 34 41 / 84 11 06
ASRN	1018709	1018709	1018709
Site AMSL	64 m	64 m	64 m
Tower AGL	130 m	130 m	130 m
COR AGL	65 m	65 m	65 m
ERP	.038 kW non-DA (V only)	.038 kW non-DA (V only)	.038 kW non-DA (V only)
COR AMSL	129 m	129 m	129 m
HAAT	68 m	68 m	68 m

The below listed pages of this exhibit contains information as indicated.

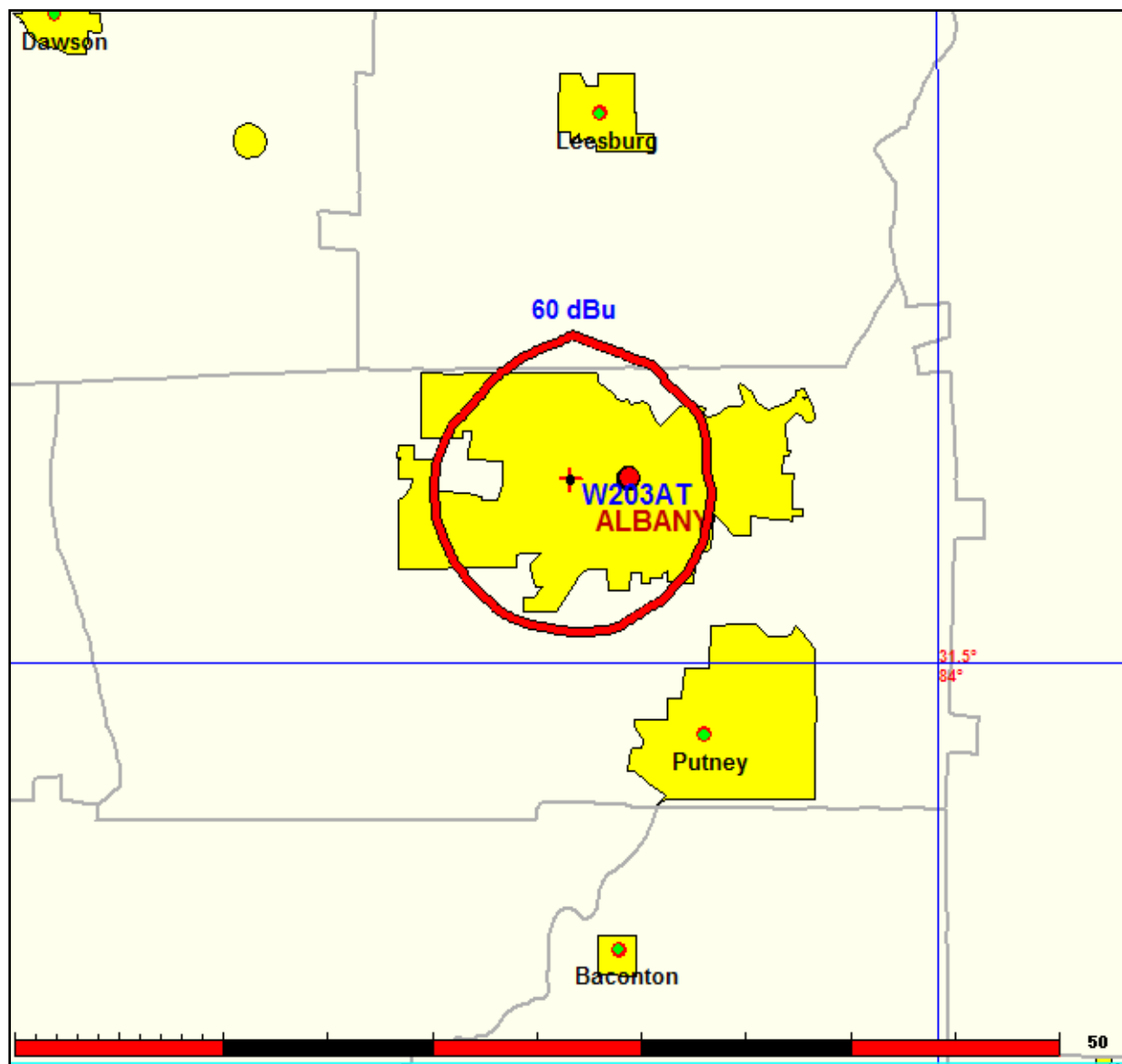
Page 2	Tabulation of HAAT / ERP /distance to 60 dBu contour
Page 3	60 dBu contour map
Page 4 - 6	Allocation study for CH 297
Page 7 - 10	Request for waiver of Section 74.1233(a)(1)

Tabulation of HAAT / ERP / Distance to 60 dBu contour

CH 297	31 34 41 / 84 11 06	0.038 kW ERP non-DA	129 m COR AMSL	68 m HAAT		
Azi.	AV EL	HAAT	ERP kW	dBk	Field	60-F5
000	60.8	68.2	0.0380	-14.20	1.000	6.64
010	66.7	62.3	0.0380	-14.20	1.000	6.37
020	68.7	60.3	0.0380	-14.20	1.000	6.27
030	67.2	61.8	0.0380	-14.20	1.000	6.34
040	63.4	65.6	0.0380	-14.20	1.000	6.51
050	65.4	63.6	0.0380	-14.20	1.000	6.42
060	59.3	69.7	0.0380	-14.20	1.000	6.71
070	58.2	70.8	0.0380	-14.20	1.000	6.77
080	61.0	68.0	0.0380	-14.20	1.000	6.63
090	62.1	66.9	0.0380	-14.20	1.000	6.58
100	57.4	71.6	0.0380	-14.20	1.000	6.80
110	55.6	73.4	0.0380	-14.20	1.000	6.89
120	53.1	75.9	0.0380	-14.20	1.000	6.99
130	50.5	78.5	0.0380	-14.20	1.000	7.12
140	49.8	79.2	0.0380	-14.20	1.000	7.15
150	50.7	78.3	0.0380	-14.20	1.000	7.11
160	46.9	82.1	0.0380	-14.20	1.000	7.28
170	46.7	82.3	0.0380	-14.20	1.000	7.29
180	48.6	80.4	0.0380	-14.20	1.000	7.21
190	50.7	78.3	0.0380	-14.20	1.000	7.11
200	50.5	78.5	0.0380	-14.20	1.000	7.12
210	51.4	77.6	0.0380	-14.20	1.000	7.08
220	55.6	73.4	0.0380	-14.20	1.000	6.88
230	57.5	71.5	0.0380	-14.20	1.000	6.80
240	58.9	70.1	0.0380	-14.20	1.000	6.73
250	59.6	69.4	0.0380	-14.20	1.000	6.69
260	61.9	67.1	0.0380	-14.20	1.000	6.58
270	64.1	64.9	0.0380	-14.20	1.000	6.48
280	66.3	62.7	0.0380	-14.20	1.000	6.38
290	70.0	59.0	0.0380	-14.20	1.000	6.21
300	75.1	53.9	0.0380	-14.20	1.000	5.94
310	77.7	51.3	0.0380	-14.20	1.000	5.80
320	76.0	53.0	0.0380	-14.20	1.000	5.89
330	75.1	53.9	0.0380	-14.20	1.000	5.94
340	72.4	56.6	0.0380	-14.20	1.000	6.09
350	68.5	60.5	0.0380	-14.20	1.000	6.28

(yellow highlighted values establish average HAAT)

60 dBu contour map



Allocation Study

CH 297 31 34 41 / 84 11 06 0.038 kW ERP non-DA 129 m COR AMSL 68 m HAAT

CH CITY	CALL	TYPE STATE	AZI. <--	DIST FILE #	LAT. LNG.	Pwr (kW) HAAT (M)	INT (km) COR (M)	PRO (km) LICENSEE	*IN* (Overlap in km)	*OUT*
------------	------	---------------	-------------	----------------	--------------	----------------------	---------------------	----------------------	-------------------------	-------

First, second, and third adjacent relationships:

295A	WGSW	CP	354.4	56.4	32 05 03.0	6.000	2.5	25.5	47.5	30.5
Americus		GA	174.4	BMPH20150211AAA	84 14 35.0	55	180	Vickers, Victor M		
296C1	WGMV	LIC	182.6	110.0	30 35 12.0	100.000	100.5	68.6	2.3	31.1
Thomasville		GA	2.5	BMLH20110408ABL	84 14 11.0	251	290	Cc Licenses, Llc		
297C0	WCGQ	LIC	320.5	128.3	32 28 00.0	100.000	176.7	75.3	-54.3*<	33.2
Columbus		GA	140.1	BMLH20070118ABW	85 03 20.0	308	418	Pmb Broadcasting, Llc		
298A	WTIF-FM	LIC	96.7	63.6	31 30 34.0	6.000	42.1	27.2	14.7	26.6
Omega		GA	277.1	BLH20110914AAW	83 31 13.0	100	198	Plant Broadcasting, Llc		
299C3	WEGC	LIC	295.0	17.7	31 38 42.0	11.500	3.3	33.0	8.2	-15.7
Sasser		GA	114.9	BLH19950825KC	84 21 15.0	95	171	Cumulus Licensing Llc		

I.F. Relationships:

None

Terrain database is NGDC 30 SEC, R= 73.215 qualifying spacings or FCC minimum spacings in KM, M= Margin in KM Contour distances are on direct line to and from reference station. Reference Zone= West Zone, Co to 3rd adjacent. All separation margins (if shown) include rounding
Ant Column: (D= DA Standard, Z= DA 73.215, N= Not DA 73.215, _= Omni), Polarization (C,H,V,E),
Beamtlt(Y,N,X) ""affixed to 'IN' or 'OUT' values = site inside protected contour. < = Contour overlap

Allocation Study

Operating on Channel 297, W203AT will be located within the 60 dBu contour of the below second adjacent station as indicated:

WEGC (LIC), CH 299, Sasser, GA

WEGC signal strength at the W203AT site 71.4 dBu
W203AT corresponding interference contour 111.4 dBu
Distance to W203AT interference contour 115.9 meters

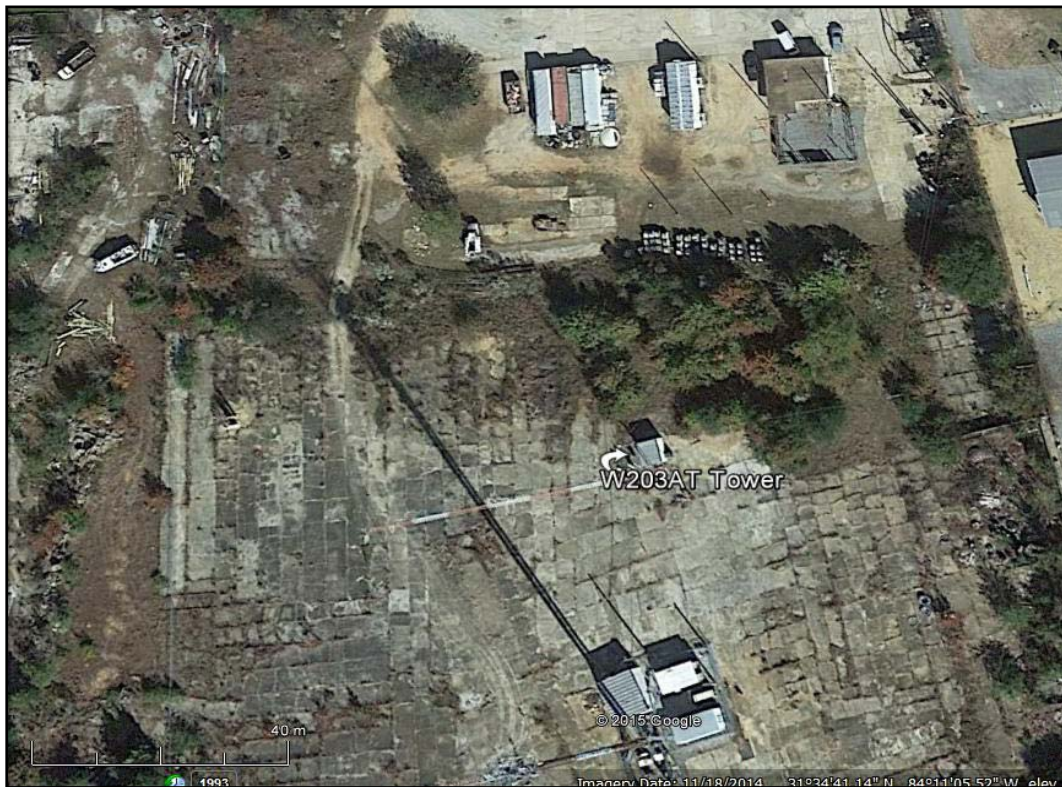
The W203AT antenna is located 65 meters above ground (see map on page 6 of this exhibit). The below chart demonstrates that by taking into account the Scala GP-FM vertical elevation pattern no interference will reach the ground, therefore, a waiver of Section 74.1204(d) is respectfully requested based on the showing of no population within the area of predicted interference.

ERP (kw): 0.038
Height of Antenna above Ground (m): 65
Translator's IX Contour: 111.4
Antenna Type: Scala GPFM

Depression Angle	Antenna	ERP (kw)	Dist. To IX Contour	Height IX Contour Above
<u>from Horizon</u>	<u>Relative Field</u>	<u>from the Antenna</u>	<u>(m)</u>	<u>Ground (m)</u>
0	1.000	0.0380	116.3836	65.000
5	0.990	0.0372	115.2198	54.958
10	0.970	0.0358	112.8921	45.396
15	0.950	0.0343	110.5644	36.384
20	0.925	0.0325	107.6548	28.180
25	0.880	0.0294	102.4176	21.716
30	0.830	0.0262	96.5984	16.701
35	0.780	0.0231	90.7792	12.931
40	0.725	0.0200	84.3781	10.763
45	0.660	0.0166	76.8132	10.685
50	0.600	0.0137	69.8302	11.507
55	0.525	0.0105	61.1014	14.949
60	0.455	0.0079	52.9545	19.140
65	0.380	0.0055	44.2258	24.918
70	0.300	0.0034	34.9151	32.191
75	0.230	0.0020	26.7682	39.144
80	0.160	0.0010	18.6214	46.662
85	0.080	0.0002	9.3107	55.725
90	0.001	0.0000	0.1164	64.884

Allocation Study

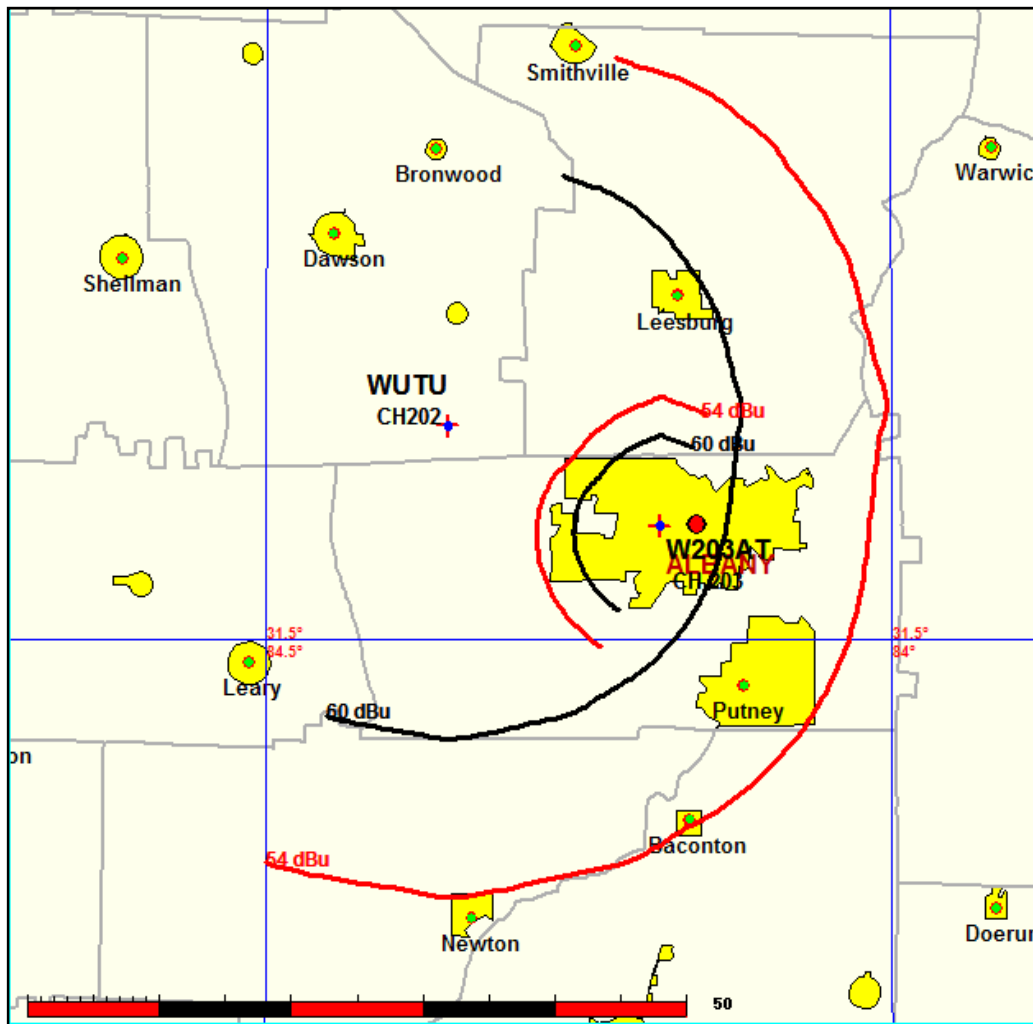
Map of W203AT Site



Displacement Study

The use of CH 203, W203AT's currently licensed channel, first adjacent CH 202, and second adjacent CH 201 are precluded from use as there would be prohibited overlap with and cause interference to WUTU, CH 202, Sasser, GA (BLED-20140409AAI). W203AT is located within the 60 dBu of WUTU (see below map), thus operating co-channel (202) or either first adjacent channel (203 / 201) to WUTU would result in prohibited overlap with WUTU.

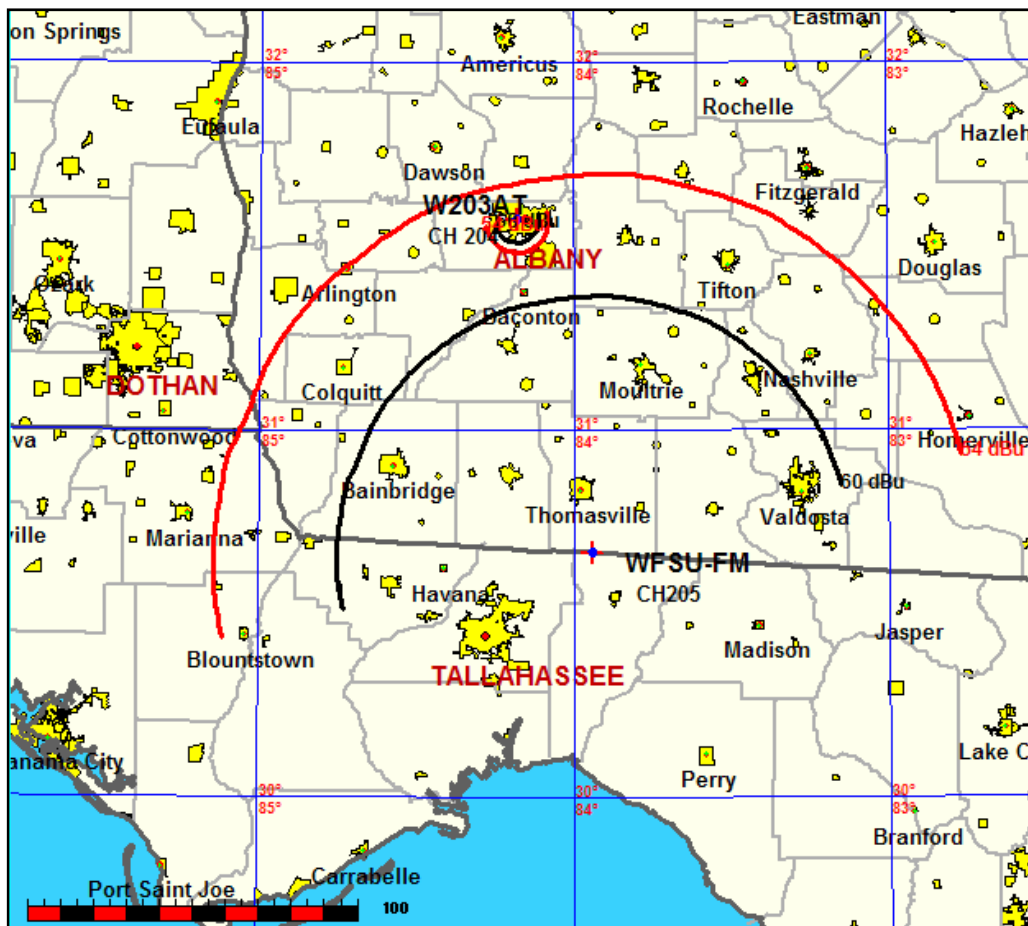
W212AG (licensed on CH 203) located within 60 dBu of WUTU, CH 202



Displacement Study

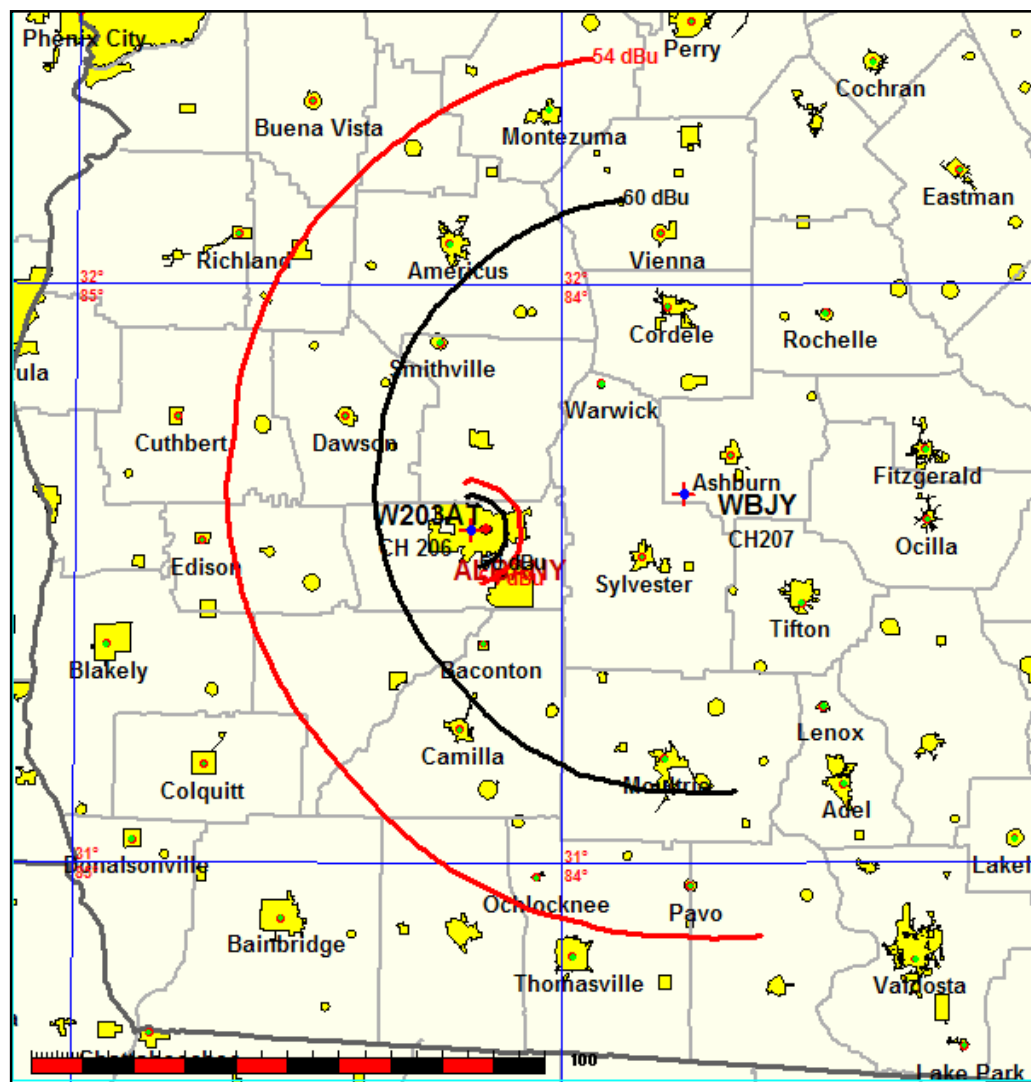
W203AT's use of first adjacent CH 204, second adjacent CH 205, and third adjacent CH 206 is precluded from use as it would cause interference to WFSU-FM, CH 205, Tallahassee, FL, which has a signal strength of 48.7 dBu at W203AT's site. Furthermore, WBJY, CH 207, Americus, GA, precludes the use of CH 206 as W203AT is located within the 60 dBu of WBJY and thus would have prohibited overlap with and cause interference to WBJY.

W203AT to WFSU-FM, CH 205



Displacement Study

W203AT on CH 206 to WBJY, CH 207



W203AT's use of I.F. channels 256 or 257 is precluded from use as it would cause interference to W256CK (CP), Albany, GA, which is located 0.1 km from W203AT's site.

Displacement Study

Notwithstanding the above interference issues with W203AT utilizing a first, second, or third adjacent channel, W203AT is precluded from using any other channel from 201 – 220 as it does not meet the compliance criteria set forth in Section 74.1205(b), (c), or (d) as W203AT is located 49.8 km from CH 6 WABW-TV and is within the Grade B of WABW-TV as is indicated on the below map:

