

EXHIBIT 13

Waiver Request of Section 74.1204

W236AL Summerfield (Kernersville) North Carolina

Minor Site Change

38 Watts ERP – April 2010

Calvary Chapel of Twin Falls, Inc.

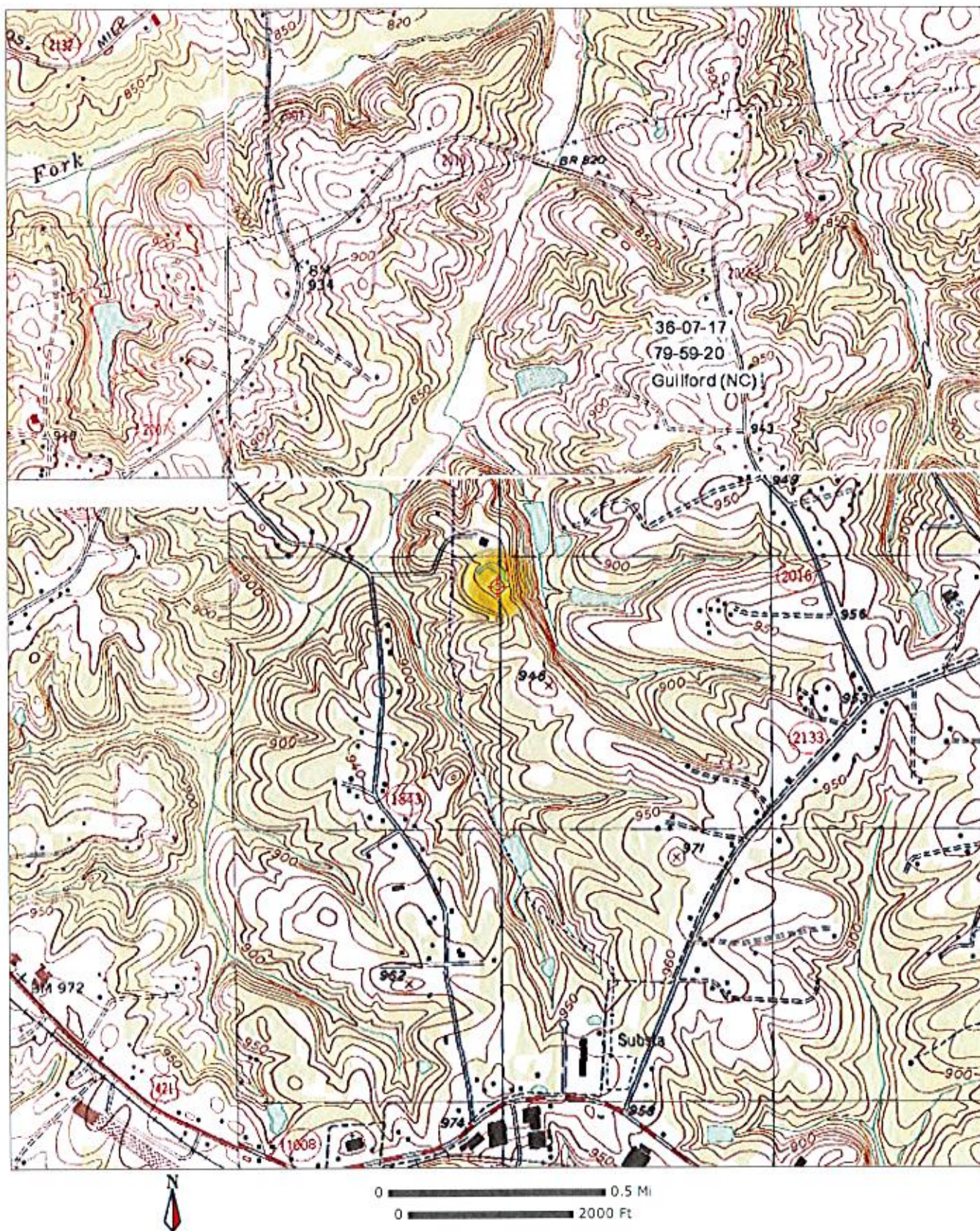
The proposed site is contained entirely inside the service contour of third-adjacent FM station WPTI Eden, NC and second-adjacent FM station WHPE-FM High Point, NC

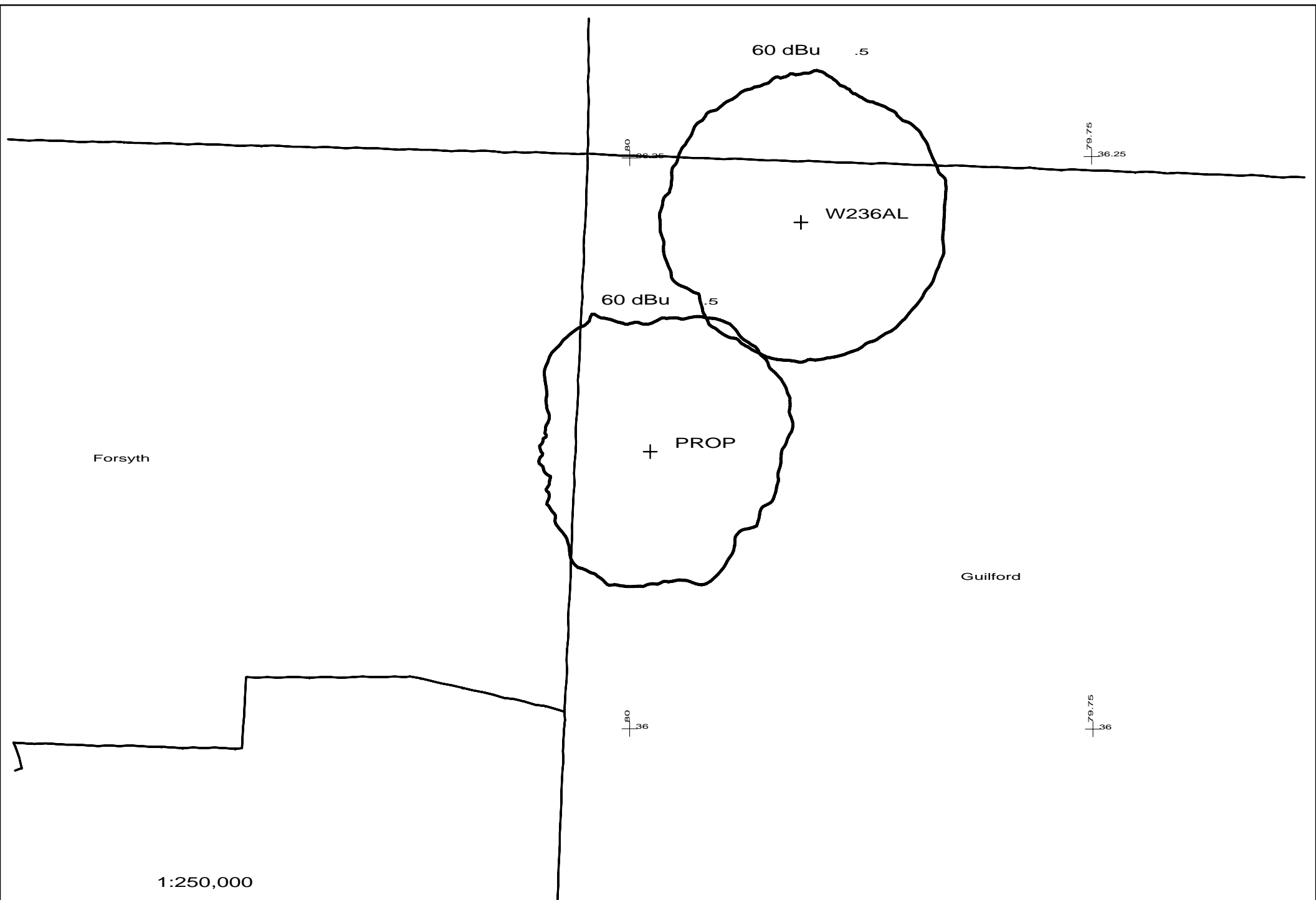
WPTI

The proposed site is contained entirely inside the service contour of third-adjacent FM Station WPTI, 233C1, 100kW, Eden, NC. The level of least arriving protected F(50,50) signal is 82.1-dBu. Using the Undesired-to-Desired method for calculating proposed interference, the interfering contour is 122.1-dBu (free-space contour method employed). The interfering signal would, in the worst case at the maximum radial extend 35 meters, or 115 feet, from the base of the tower. Attached is a portion of the USGS Guilford (NC) Quadrangle showing a 500 foot interference contour marked in yellow. This tower is not located in a highly populated area and there are no residences, businesses or major roadways within the interference contour. Calvary Chapel of Twin Falls, Inc. respectfully requests a waiver of the FM translator contour overlap regulations with respect to third-adjacent channel WPTI.

WHPE-FM

The proposed site is contained entirely inside the service contour of second-adjacent FM Station WHPE-FM, 238C1, 100kW, High Point, NC. The level of least arriving protected F(50,50) signal is 79.5-dBu. Using the Undesired-to-Desired method for calculating proposed interference, the interfering contour is 119.5-dBu (free-space contour method employed). The interfering signal would, in the worst case at the maximum radial extend 47 meters, or 155 feet, from the base of the tower. Attached is a portion of the USGS Guilford (NC) Quadrangle showing a 500 foot interference contour marked in yellow. This tower is not located in a highly populated area and there are no residences, businesses or major roadways within the interference contour. Calvary Chapel of Twin Falls, Inc. respectfully requests a waiver of the FM translator contour overlap regulations with respect to second-adjacent WHPE-FM.





TERRAIN AND CONTOUR DATA

CALVARY CHAPEL OF TWIN FALLS, INC.
 W236AL SUMMERFIELD (KERNERSVILLE)NC
 APRIL 2010

N. Lat. = 360717.0 W. Lng. = 795920.0
 HAAT and Distance to Contour - FCC Method - USGS 03 SEC

Azi.	AV EL	HAAT	ERP kW	dBk	Field	60-F5
000	266.1	58.9	0.0380	-14.20	1.000	6.21
030	243.2	81.8	0.0380	-14.20	1.000	7.27
060	243.8	81.2	0.0380	-14.20	1.000	7.25
090	262.3	62.7	0.0380	-14.20	1.000	6.38
120	267.2	57.8	0.0380	-14.20	1.000	6.15
150	253.9	71.1	0.0380	-14.20	1.000	6.78
180	261.1	63.9	0.0380	-14.20	1.000	6.44
210	258.0	67.0	0.0380	-14.20	1.000	6.58
240	277.1	47.9	0.0380	-14.20	1.000	5.60
270	281.6	43.4	0.0380	-14.20	1.000	5.32
300	273.7	51.3	0.0380	-14.20	1.000	5.80
330	250.1	74.9	0.0380	-14.20	1.000	6.95

Ave EI = 261.49 M HAAT= 63.51 M AMSL= 325