

EXHIBIT 11
(Page 1 of 2)

PROPOSED TRANSMITTER SITE
Positive Radio Group, Inc. of Ohio
Middleport-Pomeroy, OH

The attached application proposes a correction to the geographic coordinates for the WMPO transmitter site. The presently licensed coordinates for this site are:

NL - 39° 00' 35"

WL - 82° 04' 14"

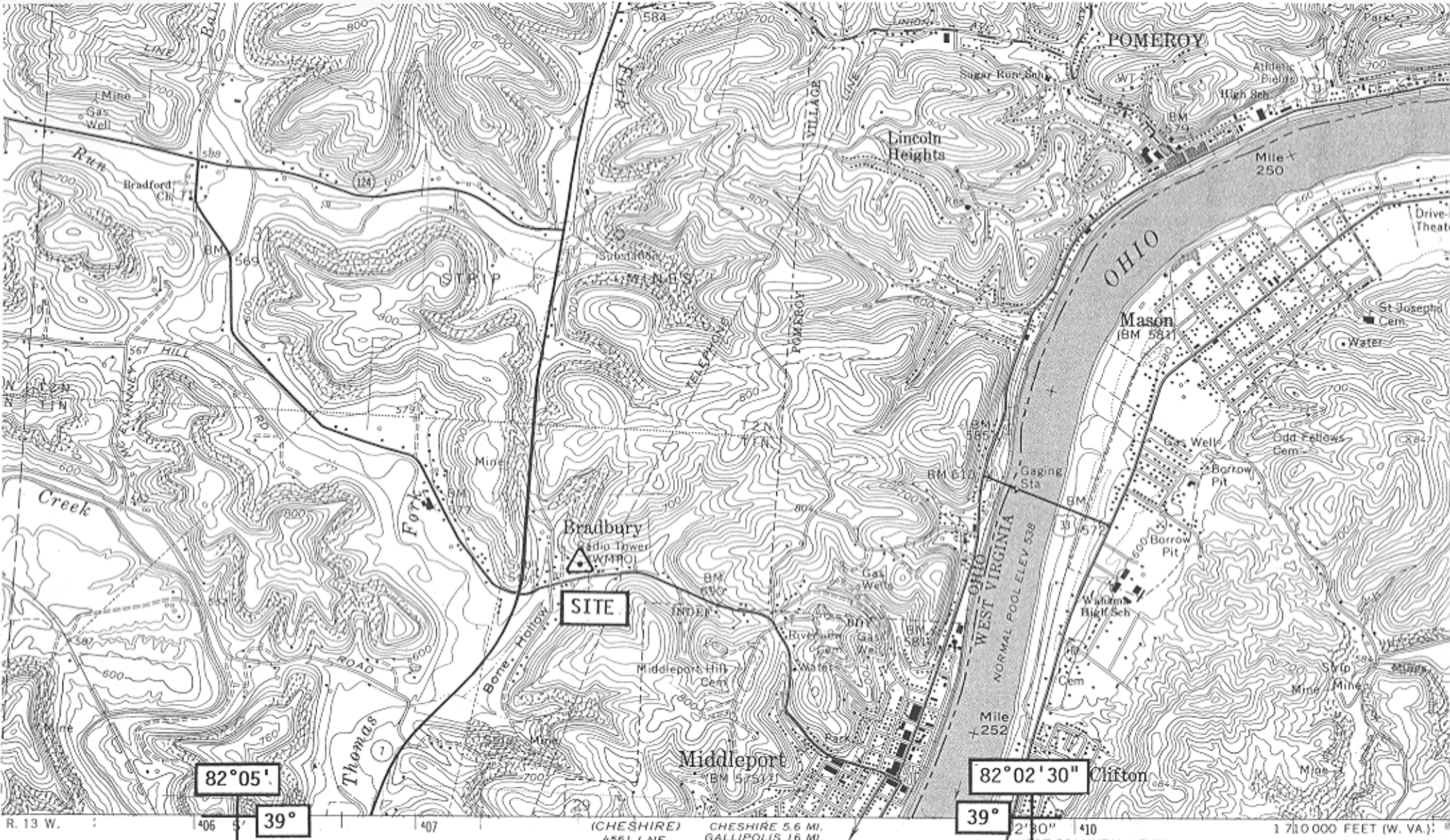
The correct coordinates for this site are:

NL - 39° 00' 37"

WL - 82° 03' 58"

Figure 11.0 is a topographic map showing the actual location of the WMPO transmitter site. It should be noted that Antenna Structure Registration of the WMPO tower is not required.

The attached application proposes no technical changes to the present operating facilities of this station. For this reason, no service contours are contained in this exhibit as they are essentially unchanged from those on file with the FCC.



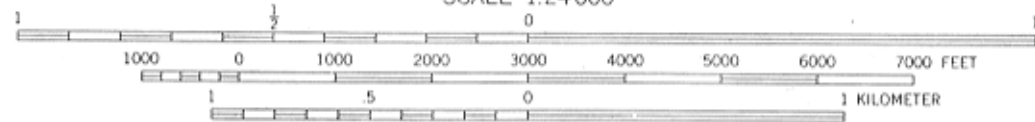
82°05'

39°

82°02'30"

39°

SCALE 1:24000



CONTOUR INTERVAL 20 FEET
 DOTTED LINES REPRESENT 10-FOOT CONTOURS
 NATIONAL GEODETIC VERTICAL DATUM OF 1929

CARL E. SMITH CONSULTING ENGINEERS
 2324 N. CLEVE-MASS RD., BOX 807
 BATH, OHIO 44210-0807
 330/659-4440

FIG. 11.0
TOPOGRAPHIC MAP
SHOWING SITE
 Positive Radio Group, Inc of Ohio
 Middleport-Pomeroy, OH

THIS MAP COMPLIES WITH NATIONAL MAP ACCURACY STANDARDS
 FOR SALE BY U.S. GEOLOGICAL SURVEY
 DENVER, COLORADO 80225, OR RESTON, VIRGINIA 22092
 A FOLDER DESCRIBING TOPOGRAPHIC MAPS AND SYMBOLS IS AVAILABLE ON REQUEST

UTM G
 DECL
 shown in
 o agencies form aerial photographs taken
 75. This information not field checked

Primary hig
 hard surface
 secondary h
 d surface
 Inte