

**Exhibit 12.1 - Copy of Existing
Antenna Structure Registration****Registration Detail**

Reg Number	1018320	Status	Constructed
File Number	A0021960	Constructed	01/01/1974
FAA Study		EMI	No
FAA Issue Date		NEPA	No

Antenna Structure

Structure Type TOWER - Free standing or Guyed Structure used for Communications Purposes

Location (in NAD83 Coordinates)

Lat/Long	40-47-34.0 N 092-52-48.0 W	ON FORMER IOWA 278 2.09 KM W OF IOWA 5 5.95 KM N
City, State	CENTERVILLE , IA	
Center of AM Array		

Heights (meters)

Elevation of Site Above Mean Sea Level	Overall Height Above Ground (AGL)
285.9	155.4
Overall Height Above Mean Sea Level	Overall Height Above Ground w/o Appurtenances
441.3	153.9

Painting and Lighting Specifications

FCC Paragraphs 1, 3, 4, 13, 21

Owner & Contact Information

FRN

Licensee ID

Owner

KMGO INC
Attention To: FRED JENKINS
402 N 12TH ST
CENTERVILLE , IA 52544

P: (515)856-3996
E: KMGOFM@SE-IOWA.NET

Contact

P:
E:

Last Action Status

Status	Constructed	Received	04/03/1997
Purpose	New	Entered	04/07/1997
Mode	Mail In (Manual)		

Related Applications

04/03/1997 A0021960 - New (NE)

Comments**Comments**

None

Automated Letters

None



Exhibit 12.2

Vertical Plan of Antenna System

The site is located on former Iowa 287, 2.09 km west of Iowa 5 and 5.95 km north of Centerville, IA, the city of Centerville, Appanoose County, Iowa.

Site Location (NAD 27)

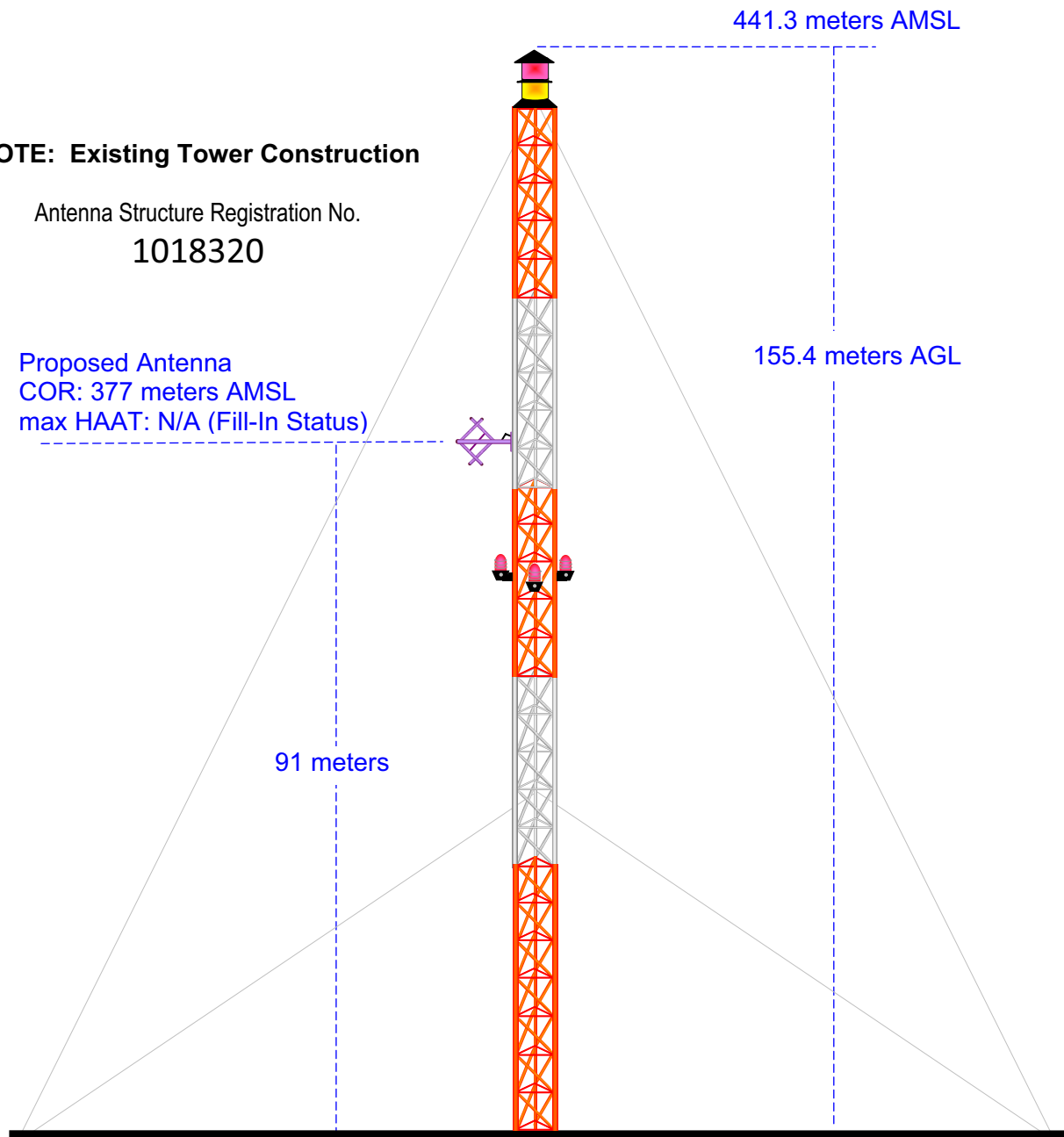
NL: 40° 47' 34"

WL: 92° 52' 47"

NOTE: Existing Tower Construction

Antenna Structure Registration No.
1018320

Proposed Antenna
COR: 377 meters AMSL
max HAAT: N/A (Fill-In Status)



Ground Elevation = 285.9 m AMSL

Drawing is not to Scale

MUNN-REESE, INC.

Broadcast Engineering Consultants
Coldwater, MI 49036

Exhibit 12.3 Present vs Proposed Service Contour Study

K203EI.L
BLFT20070122ALM
Latitude: 40-47-34 N
Longitude: 092-52-47 W
ERP: 0.25 kW
Channel: 203
Frequency: 88.5 MHz
AMSL Height: 377.0 m
Horiz. Pattern: Omni
Vert. Pattern: No
Prop Model:

60 dBu Contour
Total Population: 9,349
Total Area: 476.24 sq. km

CH257D.P
Proposed Operation
Latitude: 40-47-34 N
Longitude: 092-52-47 W
ERP: 0.099 kW
Channel: 257
Frequency: 99.3 MHz
AMSL Height: 377.0 m
Horiz. Pattern: Omni
Vert. Pattern: No
Prop Model:

60 dBu Contour
Total Population: 8,274
Total Area: 304.14 sq. km

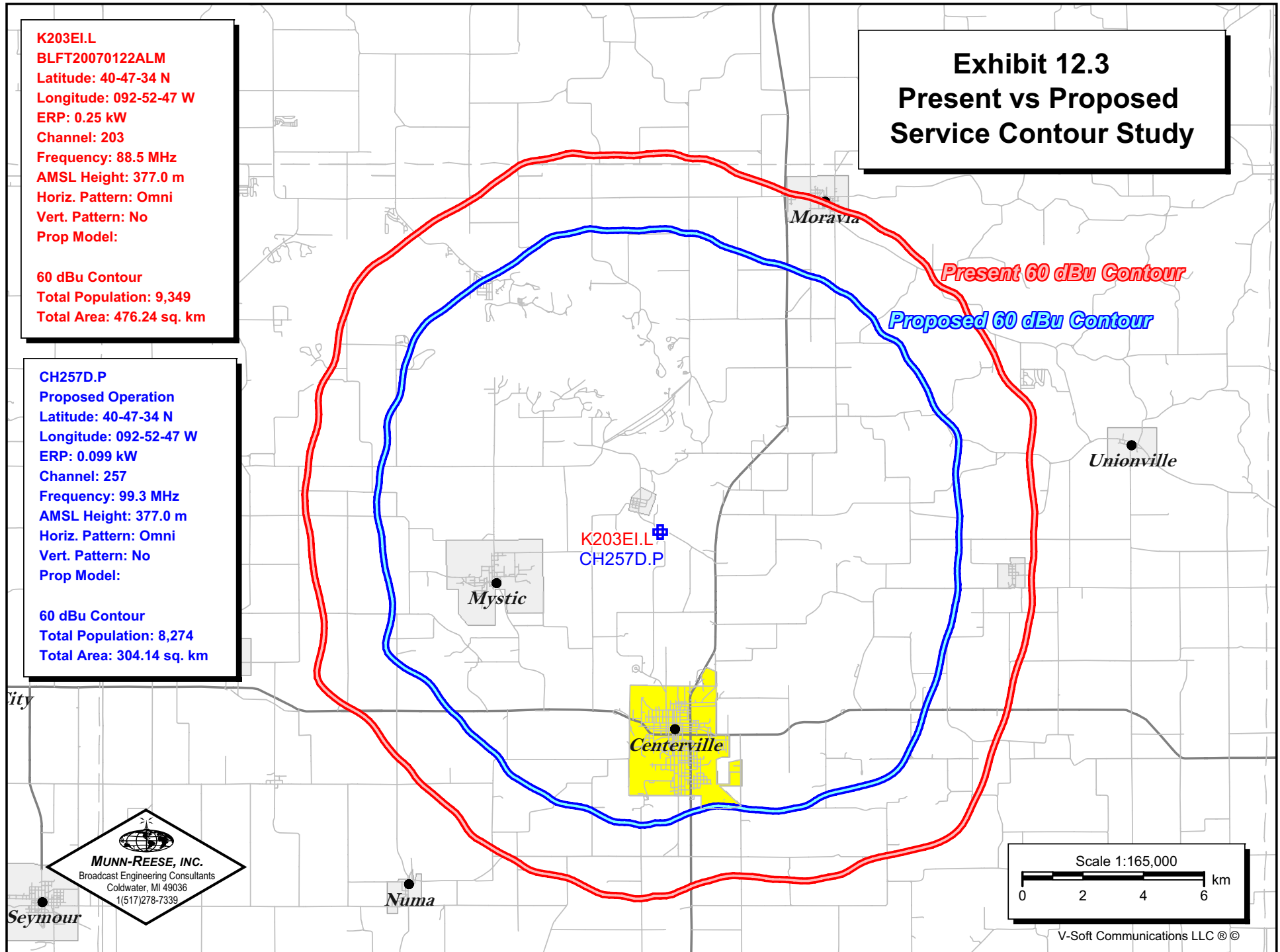


Exhibit 12.4 Proposed vs Primary Service Contour Study

KMGO.L
BLH6437
Latitude: 40-47-34 N
Longitude: 092-52-47 W
ERP: 100.00 kW
Channel: 254
Frequency: 98.7 MHz
AMSL Height: 424.0 m
Horiz. Pattern: Omni
Vert. Pattern: No
Prop Model:

KMGO.C
BPH20060315ADN
Latitude: 41-02-22 N
Longitude: 093-00-32 W
ERP: 94.00 kW
Channel: 254
Frequency: 98.7 MHz
AMSL Height: 737.0 m
Horiz. Pattern: Omni
Vert. Pattern: No
Prop Model:

CH257D.P
Proposed Operation
Latitude: 40-47-34 N
Longitude: 092-52-47 W
ERP: 0.099 kW
Channel: 257
Frequency: 99.3 MHz
AMSL Height: 377.0 m
Horiz. Pattern: Omni
Vert. Pattern: No
Prop Model:

This proposal will cause second adjacent interference to Primary Station KMGO(FM), Centerville, IA. Interference to the primary station is allowable under §74.1204(e) so long as the area of interference (100 dBu f(50:10)) does not occur over the primary city of license. In this instance, the worst case 100 dBu area of interference extends 0.7 km around the base of the tower and will not enter the primary city of license of Centerville, IA, as noted here-in.

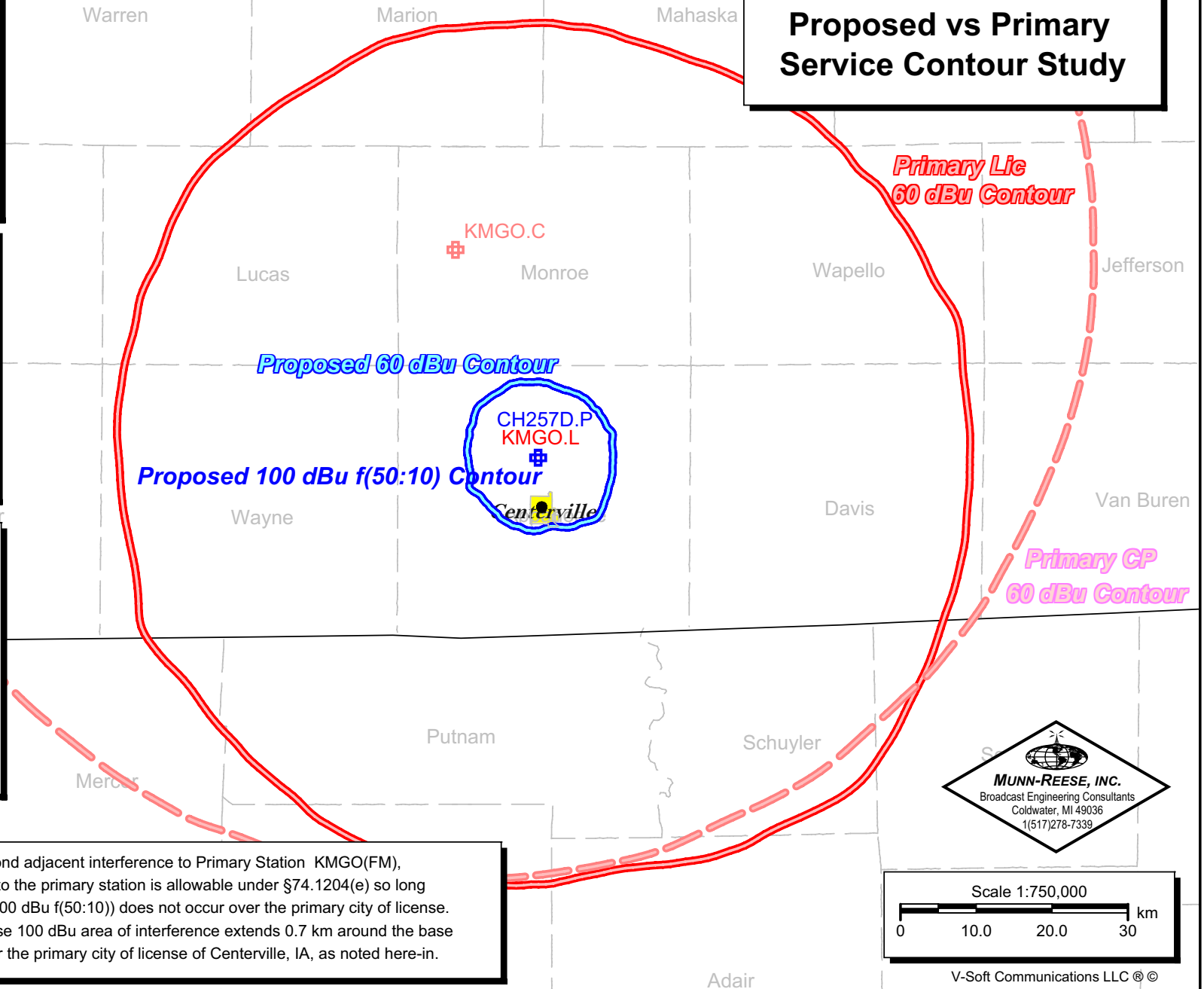


Exhibit 12.5

Tabulation of Proposed Allocation

Tabulations of contours will be supplied upon request.

Horizon Christian Fellowship

REFERENCE 40 47 34.0 N. 92 52 47.0 W.		CH# 257D - 99.3 MHz, Pwr= 0.099 kw, HAAT= 87.6 M, COR= 377 M Average Protected F(50-50)= 9.65 km Omni-directional							DISPLAY DATES DATA 02-14-09 SEARCH 02-17-09		
CH CITY	CALL	TYPE STATE	ANT AZI ---	DIST FILE #	LAT LNG	PWR(kw) HAAT(M)	INT(km) COR(M)	PRO(km) LICENSEE	*IN* (Overlap in km)	*OUT*	
254C1 Centerville	KMG0	LIC _CN IA	0.0 0.0	0.0 BLH6437	40 47 34.0 92 52 47.0	100.000 137	6.8 424	56.7 Kmg0, Inc.	-16.6*<	-57.4*<	
254C0 Centerville	KMG0	CP _CX IA	338.5 158.4	29.5 BPH20060315ADN	41 02 22.0 93 00 32.0	94.000 458	12.0 737	83.3 Kmg0, Inc.	7.4	-54.5*<	
One Step Application											
260C3 New Sharon	KCWN	LIC _CN IA	17.2 197.4	58.1 BLH19951025KA	41 17 32.0 92 40 24.0	25.000 86	4.0 324	38.7 Crown Broadcasting Company	44.7	18.8	
256C2 Brooklyn	KSKB	LIC _C_ IA	23.4 203.8	108.8 BLED20070328AAA	41 41 23.0 92 21 31.0	44.000 160	77.2 427	51.8 Florida Public Radio, Inc.	22.2	43.9	
258D Oskaloosa	K258BG	LIC _V_ IA	17.4 197.6	56.4 BLFT20070730ABQ	41 16 37.0 92 40 38.0	0.099	11.9 297	8.5 Horizon Christian Fellowsh	35.1	34.9	
257C2 Clarinda	KMA-FM	LIC _CN IA	262.7 81.3	191.4 BMLH19950203KC	40 33 12.0 95 07 18.0	50.000 150	137.1 468	51.6 Kma Broadcasting, L.p.	45.5	110.6	
256C3 Marceline	NEW	CP _CX MO	179.5 359.5	109.6 BNPH20070430AAD	39 48 20.0 92 52 05.0	25.000 100	54.4 354	33.9 Gregory, Joe G	45.9	62.6	
One Step Application											
258C1 Quincy	WCOY	LIC NCX IL	130.3 311.2	145.1 BLH20021125AAV	39 56 30.0 91 35 03.0	100.000 149	86.1 316	56.6 Staradio Corporation	48.1	73.0	
258A Winterset	KPUL	LIC _CN IA	308.2 127.5	110.2 BLH19920602KA	41 24 02.0 93 54 58.0	6.000 100	45.8 396	29.7 Positive Impact Media, Inc	54.4	66.5	
256C1 Clarinda	KMA-FM	APP ZCX IA	271.0 89.7	170.6 BPH20060920ABQ	40 48 04.0 94 54 06.0	100.000 299	103.9 647	71.4 Kma Broadcasting, L.p.	57.5	86.3	
One Step Application											
256C1 Clarinda	KMA-FM	RSV _ IA	268.8 87.3	182.2	40 44 14.0 95 02 10.0	100.000 299	104.1 632	71.6 Kma Broadcasting, L.p.	69.0	97.9	
One Step Application											
257A Boone	KFFF-FM	LIC _CX IA	329.0 148.4	163.4 BMLH20060823AAD	42 02 55.0 93 53 54.0	5.200 107	84.4 430	27.4 The Faith & Freedom Networ	69.3	103.3	
257C2 Boonville	KCLR-FM	LIC _CN MO	172.6 352.9	225.7 BLH19900906KA	38 46 34.0 92 32 45.0	33.000 180	132.8 405	52.2 Zimmer Radio Of Mid-missou	83.8	143.4	
256L1 Des Moines	KFMG-LP	LIC _ IA	324.8 144.3	108.1 BLL20070226AAT	41 35 04.0 93 37 46.0	0.095 27	6.0 295	4.2 Employee & Family Resource	92.4	90.3	
260C3 Macon	KIRK	LIC _CN MO	168.8 349.0	134.9 BLH19980625KA	39 36 02.0 92 34 24.0	12.500 141	3.8 371	38.2 Moberly/ Macon License Co,	121.9	96.0	
One-step application from Channel 260A.											

Terrain database is NED 03 SEC , R= 73.215 qualifying spacings or FCC minimum spacings in KM, M= Margin in KM
Contour distances are on direct line to and from reference station. Reference zone = 2, Co to 3rd adjacent.
Ant Column: (D= DA Standard, Z= DA 73.215, N= Not DA 73.215, _= Omni), Polarization (C,H,V,E), Beamtilt(Y,N,X)
"*"affixed to 'IN' or 'OUT' values = site inside protected contour.
"<" = Contour overlap

Yellow Highlighted Text denotes given second adjacent interference caused to Primary Station KMG0(FM), Centerville, IA. Interference to the primary station is allowable under §74.1204(e) so long as the area of interference does not occur over the primary city of license. In this instance the area of interference will not enter the primary city of license of Andover, MA as noted in **Exhibit 12.4**.