
GoodRadio.TV LLC

LLOYD W. COLLINS, CPBE

DIRECTOR OF ENGINEERING

TECHNICAL EXHIBIT
Minor Modification to Construction Permit
BNPH-20070502ADR

Station KCDG (Facility ID 171017)
Madison, Mo.

January 11, 2007

Channel 247C3 11KW 152M

P.O. BOX 619 MOBERLY, MO 65270-0619 660.263.1500

TECHNICAL EXHIBIT
Minor Modification to Construction Permit
BNPH-20070502ADR

Station KCDG (Facility ID 171017)
Madison, Mo.
Channel 247C3 11KW 152M

Table of Contents

Technical Narrative

Figure 1	Proposed Antenna Supporting Structure
Figure 2	Predicted FCC Coverage Contours
Figure 3	Allocation Study

TECHNICAL EXHIBIT
Minor Modification to Construction Permit
BNPH-20070502ADR
Station KCDG (Facility ID 171017)
Madison, Mo.
Channel 247C3 11KW 152M

Technical Narrative

This technical exhibit, of which this narrative is part, was prepared in support of an application for Minor Modification of Construction Permit BNPH-20070502ADR which has been granted for station KCDG in Madison, Missouri. Specifically, the applicant seeks to change antenna location, increase Radiation Center Height Above Average Terrain, and reduce Effective Radiated Power to conform with the definition of maximum Class C3 facilities.

Proposed Facility

The proposed NAD27 site co-ordinates are 39° 27' 04" North Latitude and 92° 10' 12" West Longitude. It is proposed to operate with a non-directional ERP of 11.0 KW with an antenna HAAT of 152 meters. A sketch of the proposed antenna supporting structure is shown in Figure 1 of this exhibit. The structure is not yet constructed. Application was submitted to the Kansas City Regional office of the FAA for approval of construction of the proposed structure on December 19, 2007. Aeronautical Study Number 2008-ACE-109-0E has been assigned.

Interference Concerns

The 115 dBu predicted "Blanketing" Contour of the proposed station will extend radially 2 kilometers from the transmitting site. No interference is expected and the area is sparsely populated. However, the applicant recognizes its responsibility to resolve interference complaints, including "blanketing" and receiver-induced interference as required by Sections 73.315(b), 73.316(e) and 73.318.

Proposed Coverage Analysis

Figure 2 of this exhibit is a map showing the predicted FCC coverage for the proposed operation. The predicted 70dBu coverage contour encompasses the entire Madison city limits as derived from the 2000 US Census data.

The overall HAAT (152 Meters, rounded to the nearest Meter) was determined using the N.G.D.C. 30 second terrain database and 8 evenly spaced radials (each 45° of azimuth).

Allocation Study

Channel 247C3 at the proposed site will satisfy the Commission's minimum separation distance requirements, specified in Section 73.207(b) of the Rules, to all assignments except to station KCXM, Lee's Summit, Mo.

Station KCXM is licensed for operation on channel 247C1 at Lee's Summit, Mo. (BLH 20030130AAH). KCXM operates pursuant to the short-spacing provisions of 47CFR73.215. KCXM requested this processing with respect to the, then vacant, allotment of Channel 247C3 to Madison, Missouri in its application for construction permit. Since KCXM originally created this short-spacing with its application for construction permit, the proposed Madison 247C3 facility is able to freely construct and operate with full Class C3 facilities with respect to KCXM, provided it does not reduce the current separation distance between the vacant Madison allotment site and the licensed KCXM facilities. This distance is calculated to be 200.75 kilometers. The site proposed herein is located at 202.62 kilometers , 1.87 kilometers further away, from the KCXM licensed location. Thus, the Madison facility can operate with maximum Class C3 facilities and remains a non-short-spaced facility in compliance with Section 73.207(b) of the Rules.

Radiofrequency Electromagnetic Field Exposure

The proposed FM facility has been evaluated to determine potential radio frequency energy exposure at ground level both to workers and the general public. Based on the FCC's FM Model program using a 6 bay "rototiller" antenna with 6 bays spaced at 1 wavelength separation, the calculated density at a point 2 meters above ground level does not exceed 0.0027 mw/cm^2 . This results in a level less than 1.3% of the FCC recommended limit of 0.2 mw/cm^2 for FM channels, as applicable to uncontrolled/general public exposure areas. There are no other known broadcast operations in the area.

Access to the transmitting site will be restricted and appropriately marked with warning signs. All appropriate measures will be taken to protect authorized personnel or workers who may enter the site or perform work on the tower or other equipment. Such measures include reducing average exposure by spreading work over longer periods, wearing accepted RFR protective clothing and/or exposure monitors, or reduction of operating power up to and including complete shutdown.

This statement addresses only the potential for RF electromagnetic field exposure. All other aspects of environmental processing analysis will be provided to the FCC as part of the tower registration process.

Certification

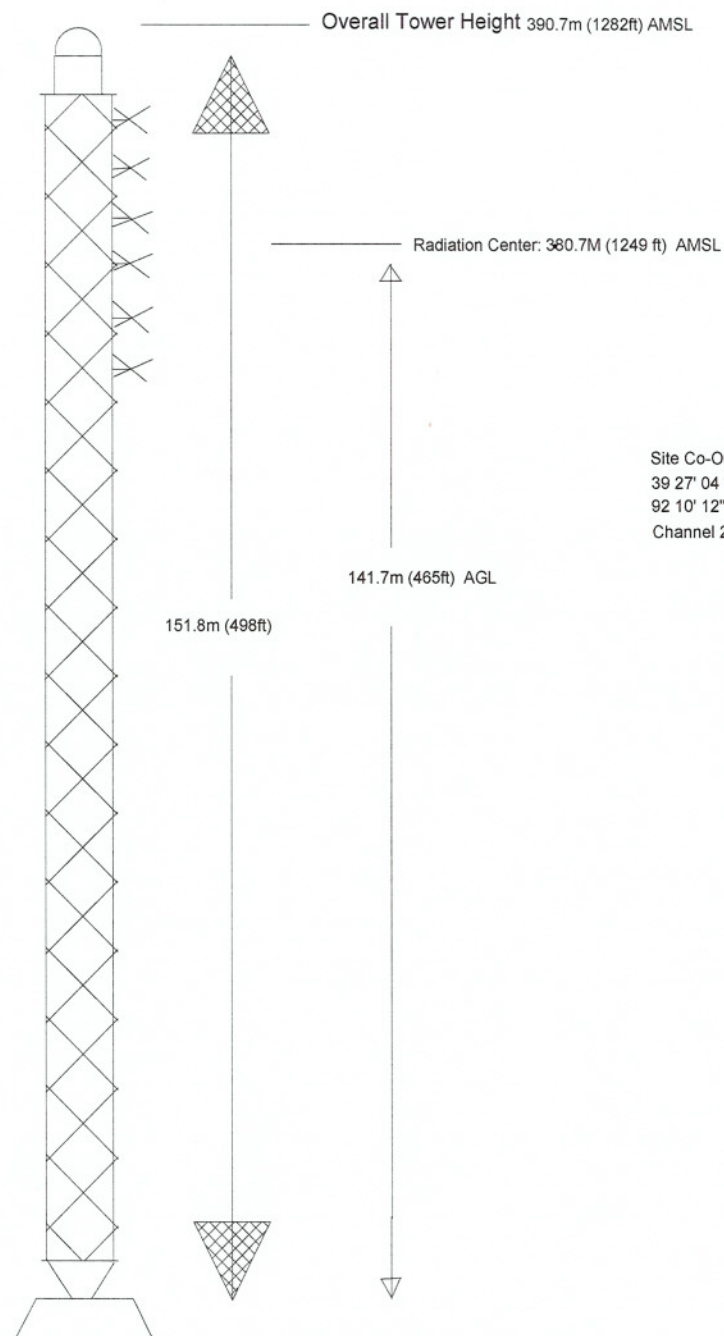
This Comprehensive Technical Exhibit was prepared by Lloyd W. Collins, CPBE, who is Director of Engineering for GoodRadio.tv, LLC and is true and accurate to the best of his belief. Having submitted numerous filings acceptable to the Commission, his qualifications are a matter of record.

A handwritten signature in black ink, appearing to read 'Lloyd W. Collins', written over a horizontal line.

Lloyd W. Collins, CPBE
Good Radio.tv, LLC
P.O. Box 619
300 West Reed St.
Moberly, MO 65270
(660) 263-1500

EXHIBIT E-1
Figure 1
STATION:
KCDG, Madison, MO.
FCC FORM:
301 -III-b
DATE:
1/15/08

Not to Scale
Guys Not Shown



Site Co-Ordinates (NAD27)
39 27' 04 "
92 10' 12"
Channel 247C3, 11KW, 152M

Site Elevation 239m 784ft AMSL

KCDG Madison, MO
Predicted Coverage Contours
Figure 2



© 2001 DeLorme. Topo USA® 3.0

Zoom Level: 9-0 Datum: WGS84

Scale 1 : 500,000

1" = 7.39 mi



GoodRadio.TV, LLC

Job: KCDG.fmj

Master Database: 2007_Dec_06.fmd

Lat: N39:27:04 Lon: W092:10:12

Channel: 247 Class: C3

Status: Licensed, Construction Permit, Application, Addition, Vacant/Reserved

Channels: Primary, 1st Adj, 2nd Adj, 3rd Adj, IF, TV6

Range: 74 km

Comments: No Comments

Description: Exhibit Figure 3, Allocation Study

Page 1

Date: 1/14/2008 4:19:52 PM

rfDetective-FM Version 1.7.4

Callsign	Latitude	Longitude	City	State	Service	Channel	Class	InStatus	Min Separation	Clearance	ERP	HAAT	Adjacency
KCDG	N39:28:52	W092:10:13	MADISON	MO	FM	247 : 97.3 M	C3	CP	153	-149.67	25.00	100	Primary
□	N39:24:37	W092:10:58	MADISON	MO	FM	247 : 97.3 M	C3	VAC	153	-148.34	0.00	0	Primary
KCXM	N39:05:26	W094:28:18	LEE'S SUMMIT	MO	FM	247 : 97.3 M	C1	LIC	211	-8.38	55.00	357	Primary
KFTK	N38:46:45	W090:43:43	FLORISSANT	MO	FM	246 : 97.1 M	C1	LIC	144	1.28	100.0	171	1st Adj
KCXM	N39:04:20	W094:35:45	LEE'S SUMMIT	MO	FM	247 : 97.3 M	C1	RSV	211	2.55	0.00	0	Primary
WBBA-	N39:34:53	W090:47:52	PITTSFIELD	IL	FM	248 : 97.5 M	B1	LIC	114	4.89	10.00	93	1st Adj
KCMQ	N38:41:30	W092:05:44	COLUMBIA	MO	FM	244 : 96.7 M	C1	LIC	76	8.56	99.10	278	3rd Adj
KICK-F	N39:45:26	W091:29:58	PALMYRA	MO	FM	250 : 97.9 M	C2	LIC	56	10.87	43.00	162	3rd Adj
KJMO	N38:29:57	W091:53:01	LINN	MO	FM	248 : 97.5 M	A	LIC	89	19.56	6.00	100	1st Adj
KHDK	N40:47:53	W091:26:22	NEW LONDONIA	FM	247 : 97.3 M	A	LIC	142	20.00	3.80	125	Primary	
KPOW-	N39:03:10	W093:16:01	LA MONTE	MO	FM	249 : 97.7 M	C1	LIC	76	28.51	100.0	299	2nd Adj
KZBK	N39:54:32	W093:04:34	BROOKFIELD	MO	FM	245 : 96.9 M	C2	LIC	56	36.88	50.00	150	2nd Adj
KXUS	N37:11:10	W093:01:23	SPRINGFIELD	MO	FM	247 : 97.3 M	C1	LIC	211	51.25	100.0	177	Primary
KLJE-L	N38:58:37	W092:19:19	COLUMBIA	MO	FM	300 : 107.9	L1	LIC	0	54.25	0.00	29	IF
KLTE	N39:57:23	W092:58:29	KIRKSVILLE	MO	FM	300 : 107.9	C1	LIC	24	64.94	97.00	299	IF
KHKI	N41:39:46	W093:45:23	DES MOINES	IA	FM	247 : 97.3 M	C1	LIC	211	68.94	105.0	143	Primary
KRFL-L	N38:50:29	W091:57:04	FULTON	MO	FM	248 : 97.5 M	L1	LIC	0	70.28	0.00	29	1st Adj
KRFL-L	N38:50:29	W091:57:01	FULTON	MO	FM	300 : 107.9	L1	CP	0	70.30	0.00	29	IF
KAYQ	N38:17:19	W093:18:32	WARSAW	MO	FM	246 : 97.1 M	A	LIC	89	73.55	6.00	73	1st Adj